

# PHILIPS

Lightstrip Outdoor 2  
metre

Hue White and Colour  
Ambiance

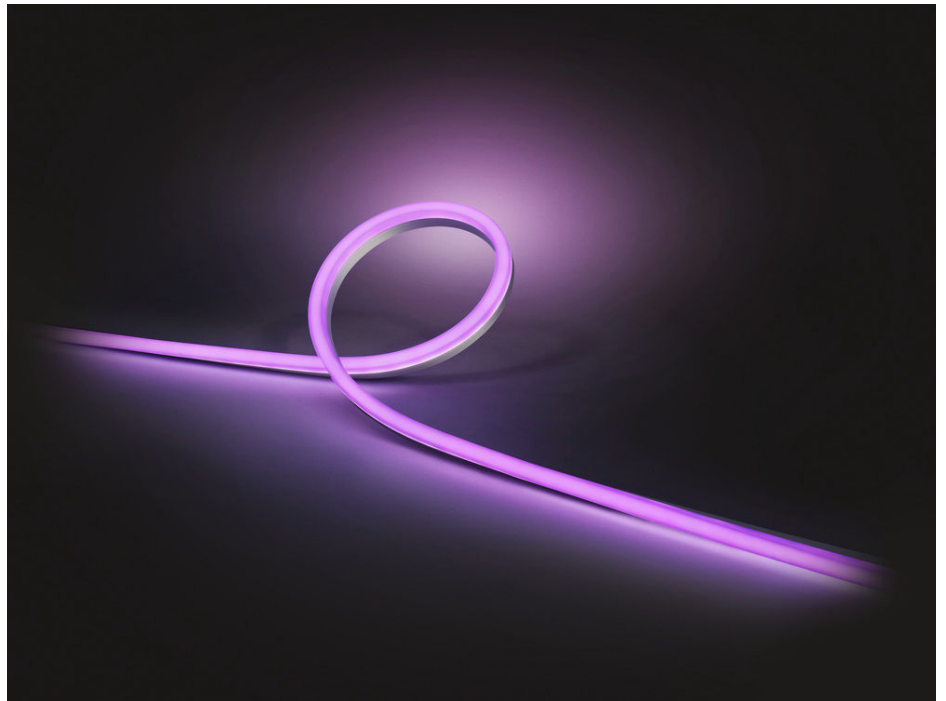
1 x 2 metre lightstrip

1 x power supply unit

White and coloured light



8718699709914



## Limitless possibilities

Personalise your outdoor space with a Philips Hue outdoor lightstrip. With its perfectly diffused glow, the flexible outdoor LED strip is ideal for direct and indirect lighting.

### Shape light your way

- Uniform light for direct lighting
- Flexible to shape and bend
- Suitable for wet locations

### Specially designed for your outdoor spaces

- Set your lights to welcome you home
- Smart control, home and away
- Set timers for your convenience
- Requires a Philips Hue bridge
- Unwind with warm to cool white light
- Special light for special occasions
- Paint your outdoors with 16 million colours
- Power supply and plug included



# Highlights

## Diffuse light effect

The Philips Hue Lightstrip Outdoor offers perfect diffused light for direct and indirect lighting solutions. Thanks to the diffuse coating you do not need to hide the lightstrip from plain sight; the light is mixed inside the strip, emitting one uniform colour on the outside.

## Flexible installation

Easily bend and shape the Philips Hue Lightstrip Outdoor to suit your needs. Place it into the ground to highlight your pathway, or apply it with the included clips and screws to any surface for ceiling or wall lighting; the possibilities are endless.

## Weather-proof

The Philips Hue Lightstrip Outdoor is fully weatherproof, meaning that it can withstand all weather conditions. The lightstrip can withstand small puddles of water and jets of water from any direction, so no need to worry when the rain comes!

## Welcome you home



Experience the comfort of your lights turning on automatically when you arrive and turning off when you leave. Unpack your car, enter your house, all with the comfort of the right light. Just set the Hue app to Home or Away mode to switch on all your lights, or let geolocation do it for you, all without touching a button. It's as easy as that.

## Smart control, home and away



Light up your outdoor spaces and see what's going on outside. By connecting your outdoor lights with the Hue Bridge, you can control them in any way you like. With our indoor remote-control options such as the Philips Hue app or using your voice (Amazon Alexa, Apple HomeKit or Google Assistant), you can control your outdoor lights. You can set light schedules to mimic your presence. Control your outdoor lighting from the comfort of your home or from any other location.

## Set timers for convenience



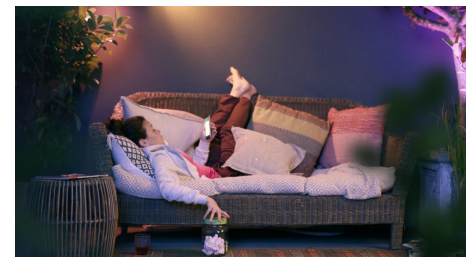
Enjoy longer evenings outside, finish gardening or just put the rubbish outside after sunset. Have your Philips Hue lights turn on automatically by setting schedules or use the sunset/sunrise routine. And of course, you can also turn off or dim your lights this way. You'll never have to worry whether you've left any lights on.

## Requires a Philips Hue bridge



Connect your Philips Hue lights with the Bridge to control your lights from your smart phone or tablet via the Philips Hue app. Or control your Philips Hue lights with the Philips Hue dimmer indoor switch for on/off and dimming functionalities.

## Warm to cool white light



Extend your evenings with Philips Hue outdoor lighting. Set the right ambience on your patio, balcony or porch and relax. From the warm white light of a summer sun, to the ice cool daylight of winter: you can enjoy any shade of white light to fit your mood throughout the year.

## Special occasions

Family or friends coming over? Set your outdoor lights to match the occasion. Whether it's a cosy dinner on the balcony, a BBQ on the patio or party in the back garden, you can add a touch of magic to every get-together with Philips Hue. Create colourful scenes or slow-moving dynamic effects to enjoy these special moments to the fullest.

### Paint your outdoors

With Philips Hue outdoor lighting, there's no limit to the magic you can add. Play with 16 million colours and all shades of white light to create the effect you want. Highlight objects, trees or pathways to make your space stand out. Use the Hue app to save your favourite light settings and recall them whenever you want with the tap of a finger.

### Power supply and plug included



This unit pack comes with all the elements you need to get started, including a lightstrip and outdoor power supply. So all you have to do is unpack, install where you want and turn them on.

## Specifications

### Design and finishing

- Colour: Multi Colour
- Material: Silicone

### Durability

- Nominal lifetime: 25,000 h

### Environmental

- Operational humidity: 5% <H<95% (non-condensing)
- Operational temperature: -20°C to 45°C

### Extra feature/accessory incl.

- Colour changing (LED): Yes
- Diffused light effect: Yes
- Dimmable: Yes
- LED integrated: Yes

### Guarantee

- 2 years: Yes

### Light characteristics

- Colour rendering index (CRI): >80

### String light/Lightstrip

- Colour temperature: 2000-6500 K
- Cut-ability: No
- Extendibility: No
- Input Voltage: 220V-240V
- Max. standby power: 0.5 W
- Wattage: 19 W
- Width: 11 mm
- Length: 78 in
- Width: 0.43 in

### Miscellaneous

- Type: Light Strips

### Packaging information

- EAN: 8718699709914

### Power consumption

- Wattage: 19 W
- Standby power consumption: 0.50 W

### Product dimensions and weight

- Net weight: 0.337 kg
- Net weight: 0.743 lb
- Height: 2 cm
- Length: 199 cm
- Width: 1.1 cm

### Service

- Warranty: 2 year(s)

### Technical specifications

- Lumen output at 4000K: 850 lm
- Lifetime: 25,000 h
- Mains power: Range 220 V-240 V
- Energy class included light source: G
- IP code: IP67
- Class of protection: II - double insulated
- Extra features: Diffused light effect
- Lumen output at 2700K: 760 lm

### The Bridge

- Max. number of accessories: 12

### The bulb

- Communication protocol: Bluetooth, Zigbee

### What's in the box

- Power adapter: 1

### What's supported

- Compatible with Effects feature: Yes
- Philips Hue App: Android 10.0 and above, iOS 16 or later
- WiFi: Works without wifi
- Defined support period: 5 years, except 3 years for Hue Bridge (see "End of Support Policy")

### Packaging dimensions and weight

- EAN/UPC – product: 8718699709914
- Net weight: 0.95 kg
- Gross weight: 1.17 kg
- Height: 21 cm
- Length: 9.6 cm
- Width: 21 cm



Issue date: 2025-05-01  
Version: 0.81

© 2025 Signify Holding. All rights reserved. Signify does not give any representation or warranty as to the accuracy or completeness of the information included herein and shall not be liable for any action in reliance thereon. The information presented in this document is not intended as any commercial offer and does not form part of any quotation or contract, unless otherwise agreed by Signify. Philips and the Philips Shield Emblem are registered trademarks of Koninklijke Philips N.V.

[www.lighting.philips.com](http://www.lighting.philips.com)