



AC1200 Wi-Fi Router MU-MIMO Gigabit

Upgrade to Fast AC Wi-Fi and gigabit connections

Archer C6



867 Mbps 5 GHz +
300 Mbps 2.4 GHz†



Advanced Security
with WPA3^S



Supports Smart
Roaming

Highlights



OneMesh™ Flexibly Create a Whole-Home Wi-Fi

Create a Mesh network by connecting one or more OneMesh™ range extenders to your Archer C6 for seamless whole-home coverage.



360° Wi-Fi Dead-Zone Killer
Eliminate weak signal areas with Wi-Fi coverage for the whole house.

Smart Roaming
Enjoy uninterrupted streaming, surfing and more—even when moving around your home.

One Wi-Fi Name
Stay connected to the same network name in every room.

Unified Management
Manage the whole-home Wi-Fi by managing the central node via Tether app/Web UI.

Upgrade to Mesh Network

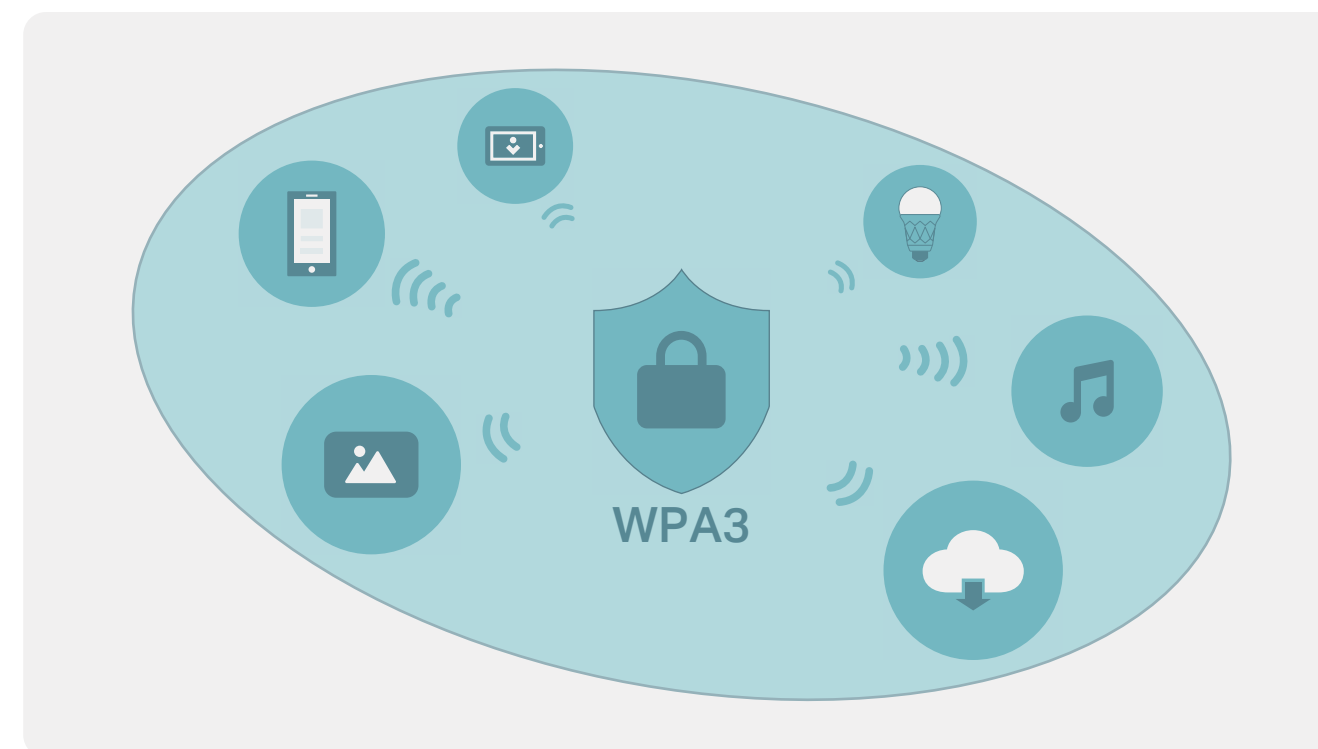


Enjoy Mesh network without having to replace your existing router by simply updating your OneMesh™ router's firmware. Check full list of OneMesh™ routers and range extenders at: <https://www.tp-link.com/onemesh/c6/compatibility>

*More compatible devices are coming soon.

Advanced Security with WPA3

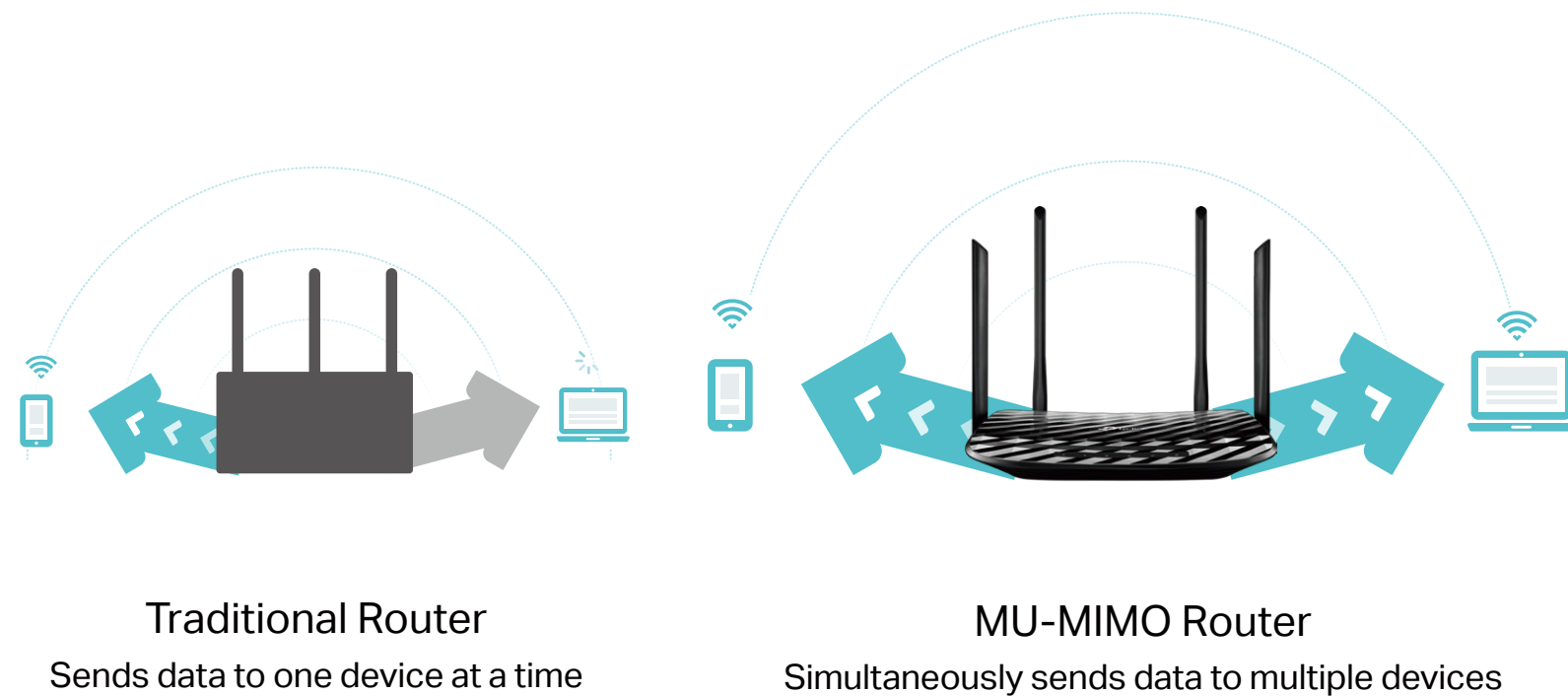
The latest Wi-Fi security protocol, WPA3, brings new capabilities to improve cybersecurity. More secure encryption in Wi-Fi password safety and enhanced protection against brute-force attacks combine to safeguard your home Wi-Fi.⁸



Highlights

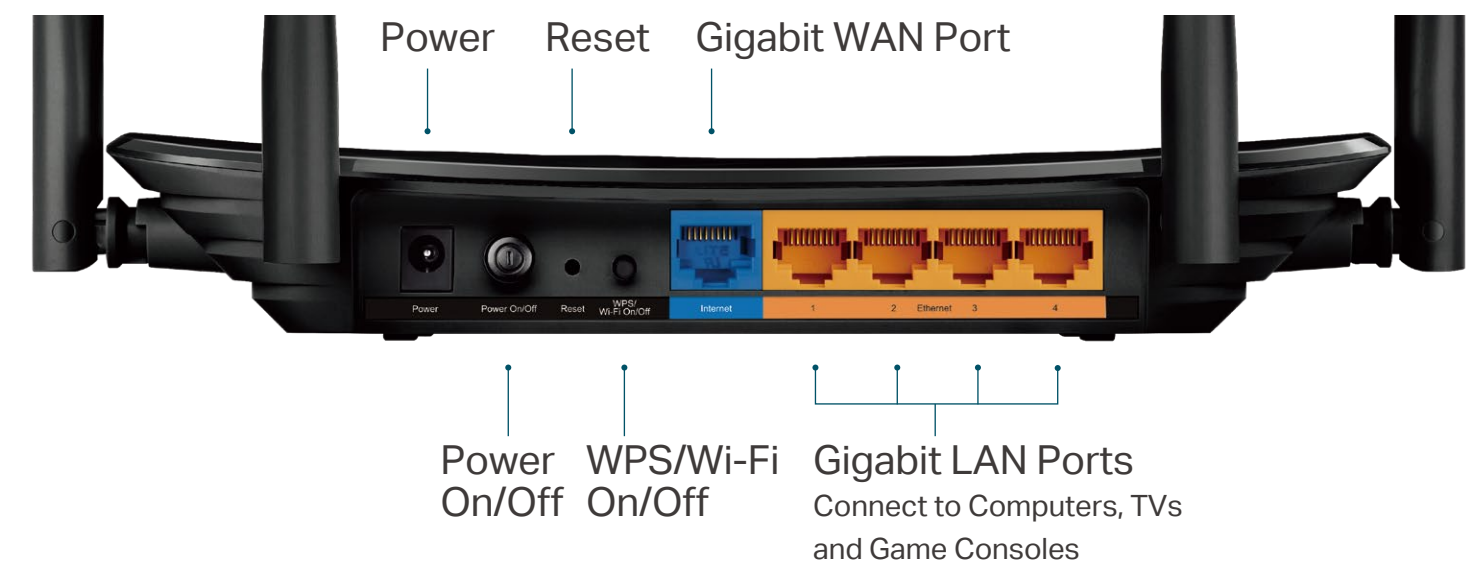
MU-MIMO for 2x Faster Connections

MU-MIMO technology serves multiple devices at once, reducing wait time, increasing Wi-Fi throughput for every device, and making each stream more efficient.†

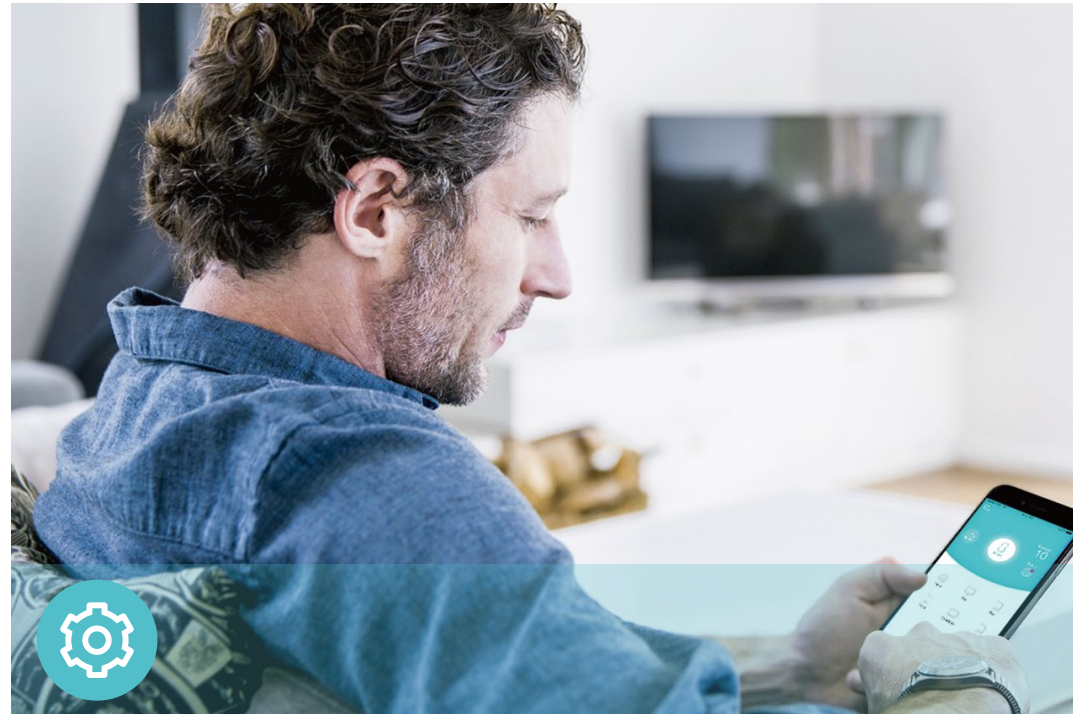


10× Faster Connectivity

One Gigabit WAN port and four Gigabit LAN ports deliver speeds up to 10× faster than standard Ethernet connections. Let every member of your family simultaneously enjoy high-speed network on their phones, tablets and laptops.†



Features



Ease of Use

- Intuitive Web UI – Ensure quick and simple installation without hassle
- Hassle-free Management with Tether App – Let you easily manage your network settings with your smartphone
- Fast Encryption – Quickly connect devices to Wi-Fi at the push of a button without entering the password
- Access Point Mode – Switch to access point mode to connect Wi-Fi devices to any wired network



Reliability

- Ultimate Wireless Speed – 300 Mbps Wi-Fi speed on 2.4 GHz and 867 Mbps Wi-Fi speed on 5 GHz meet your daily internet needs
- MU-MIMO – Simultaneously transfer data to multiple devices for 2× faster
- Support 802.11 ac – Provide a data transfer rate 3 times faster than 802.11n for each stream
- IPTV – Support IGMP Proxy/Snooping, Bridge and Tag VLAN to optimize IPTV streaming
- Secure VPN Access – Provide a private network with a safe and secure OpenVPN and PPTP VPN connection



Security

- Active Defense – Protect your home network with firewalls and wireless encryption
- Guest Network – Provide separate access for guests while securing the home network
- Access Control – Establish a whitelist or blacklist to allow or block certain devices from accessing the internet
- Parental Controls – Manage when and how connected devices can access the internet
- Encryptions for Secure Network – WPA-PSK, WPA2-PSK, and WPA3-PSK encryptions provide active protection against security threats

Specifications

Hardware

- Ethernet Ports: 4*10/100/1000 Mbps LAN Ports, 1*10/100/1000 Mbps WAN Port
- Buttons: Reset Button, Power On/Off Button, WPS/Wi-Fi On/Off Button
- Antennas: 4 Fixed External Antennas + 1 Internal Antenna
- External Power Supply: 12V/1A
- Dimensions (W x D x H): 9.1 × 5.7 × 1.4 in (230 × 144 × 35 mm)

Software

- WAN Type: Dynamic IP, Static IP, PPPoE, PPTP (Dual Access), L2TP (Dual Access), BigPond
- DHCP: Server, DHCP Client List, Address Reservation
- Port Forwarding: Virtual Server, Port Triggering, UPnP, DMZ
- Dynamic DNS: DynDns, NO-IP
- VPN Server: PPTP VPN, OpenVPN
- Access Control: Parental Controls, Local Management Control, Host List, White List, Black List
- Firewall Security: DoS, SPI Firewall, IP and MAC Address Binding
- Protocols: IPv4, IPv6
- Management: Access Control, Local Management, Remote Management
- Guest Network: 2.4 GHz Guest Network, 5 GHz Guest Network

Wireless

- Wireless Standards: IEEE 802.11ac/n/a 5GHz, IEEE 802.11b/g/n 2.4GHz
- Frequency: 2.4 GHz and 5 GHz
- Signal Rate:
 - 5 GHz: Up to 867 Mbps
 - 2.4 GHz: Up to 300 Mbps
- Transmit Power:
 - FCC EIRP: <30 dBm (2.4 GHz); <30 dBm (5 GHz)
- Reception Sensitivity:
 - 5 GHz:
 - 11a 6Mbps:-93dBm;11a 54Mbps:-78dBm;
 - 11ac HT20 mcs8:-69dBm;11ac HT40 mcs9:-65dBm;
 - 11ac HT80 mcs9:-62dBm;
 - 2.4 GHz:
 - 11g 54Mbps:-78dBm;
 - 11n HT20 mcs7:-74dBm;
 - 11n HT40 mcs7:-71dbm;
- Wireless Function: Enable/Disable Wireless Radio, WDS Bridge, WMM, Wireless Statistics, Wireless Schedule
- Wireless Security: 64/128-bit WEP,WPA / WPA2,WPA2 / WPA3, WPA-PSK/ WPA2-PSK/ WPA3-PSK encryption

Specifications

Others

· Package Contents

Wireless Router Archer C6
Power Adapter
RJ45 Ethernet Cable
Quick Installation Guide

· Certification

FCC, RoHS

· Environment

Operating Temperature: 0°C~40°C (32°F ~104°F)
Storage Temperature: -40°C~70°C (-40°F ~158°F)
Operating Humidity: 10%~90% non-condensing
Storage Humidity: 5%~90% non-condensing

· System Requirements

Microsoft Windows 10/8.1/8/7/Vista/XP/2000/NT/98SE, MAC OS, NetWare, UNIX or Linux
Internet Explorer 11, Firefox 12.0, Chrome 20.0, Safari 4.0, or other Java-enabled browser
Cable or DSL Modem
Subscription with an internet service provider (for internet access)

· Download TP-Link Tether App



For more information, please visit

<https://www.tp-link.com/us/products/details/Archer-C6.html>

or scan the QR code left

Specifications are subject to change without notice. TP-Link is a registered trademark of TP-Link Technologies Co., Ltd. Other brands and product names are trademarks or registered trademarks of their respective holders. No part of the specifications may be reproduced in any form or by any means or used to make any derivative such as translation, transformation, or adaptation without permission from TP-Link Technologies Co., Ltd. Copyright ©2020 TP-Link Technologies Co., Ltd. All rights reserved.

[†]Maximum wireless signal rates are the physical rates derived from IEEE Standard 802.11 specifications. Actual wireless data throughput and wireless coverage are not guaranteed and will vary as a result of network conditions, client limitations, and environmental factors, including building materials, obstacles, volume and density of traffic, and client location.

[‡]Use of MU-MIMO requires clients to also support MU-MIMO.

[§]Use of WPA3 requires clients to also support the corresponding feature.

www.tp-link.com

TP-Link AC1200 Wireless MU-MIMO Gigabit Router Archer C6