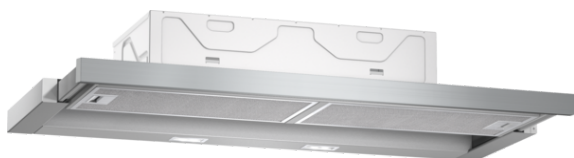


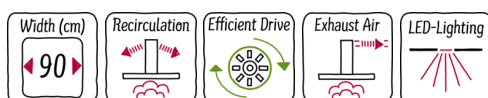
N 50, Telescopic cooker hood, 90 cm, Silver metallic
D49ED22N0B



COOKING PASSION SINCE 1877



A



Optional accessories

- Z54TC01X0 Standard odor filter (replacement)
- Z54TH90D0 Design Handle strip
- Z54TH90N0 Handle strip
- Z54TS01X0 Standard recirculation kit

Telescopic hood: designed to provide powerful extraction without impacting on your kitchen space or design. These hoods pull out from underneath a cabinet when required for a streamlined kitchen.

- ✓ EfficientDrive: save energy and enjoy a quieter kitchen thanks to efficient brushless motor technology
- ✓ Intensive speed setting: increases the extraction rate when the steam gets intense
- ✓ LED lighting: a clear illumination whilst cooking thanks to the energy-saving LED lights

Features

Technical Data

- Typology : Pull-out
- Approval certificates : CE, VDE
- Length of electrical supply cord (cm) : 175
- Required niche size for installation (HxWxD) : 162mm x 526.0mm x 290mm
- Minimum distance above an electric hob : 430
- Minimum distance above a gas hob : 650
- Net weight (kg) : 10.320
- Type of control : Electronic
- Maximum output air extraction (m³/h) : 266
- Boost position output recirculating (m³/h) : 178.0
- Boost position air extraction (m³/h) : 412
- Number of lights (Stck) : 2
- Noise level (dB(A) re 1 pW) : 63
- Diameter of air outlet (mm) : 120 / 150
- Grease filter material : Washable aluminium
- EAN code : 4242004204091
- Connection rating (W) : 76
- Current (A) : 10
- Voltage (V) : 220-240
- Frequency (Hz) : 60; 50
- Plug type : GB plug
- Installation type : Built-in



4 242004 204091

*N 50, Telescopic cooker hood, 90 cm, Silver
metallic
D49ED22NOB*

Features

Features

- LED display
- 2 x LED lights
- 3 metal grease filter cassettes
- 3 speeds plus intensive
- Automatic after running (Automatic after running (10 minutes))
- Automatic intensive revert (6mins)

Design

- Telescopic hood
- Silver metallic grey
- Standard design
- Soft touch control
- Electronic controls
- Neutral white lights

Performance/technical information

- Telescopic standard installation
- Suitable for ducted extraction and recirculation
- For recirculated extraction recirculating kit (accessory) needed
- Extraction rate according to EN 61591 Ø 15 cm: max. Normal use 265 m³/h Intensive 412 m³/h
- Power rating: 76 W
- Noise level according to EN 60704-3 and EN 60704-2-13 at maximum normal setting: extraction rate: 63 dB (A) re 1pW
- Noise max. Normal Level: Noise, max. speed in normal us: 63 dB dB*
- Light Intensity: 593 lux
- Colour Temperature: 3500 K
- Electrical cable length 1.75 m
- Diameter pipe Ø 150 mm (Ø 120 mm enclosed)
- Dimensions exhaust air (HxWxD): 203-203 x 898 x 290 mm
- Dimensions recirculating (HxWxD): 203-203 x 898 x 290 mm
- built-in dimensions (HxWxD): 162 x 526 x 290 mm
- Energy Efficiency Class: A (at a range of energy efficiency classes from A+++ to D)
- Blower Efficiency Class: B*
- Lighting Efficiency Class: A*
- Grease Filtering Efficiency Class: C*
- Average Energy Consumption: 22.6 kWh/year*