

Wall mount with tilting connection - 02

SPM128-02



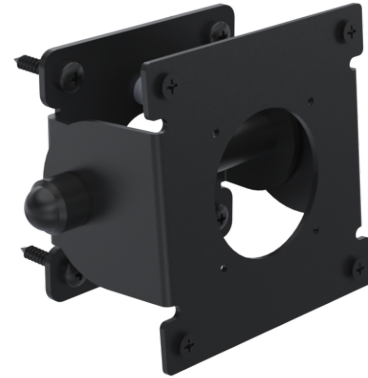
Wall mount flip

Designed for digital signage, front-of-house, and customer information points

90° tilt for improved viewing and usability

Compatible with screen sizes from 7" to 12.9" using the VESA 40 x 40 standard

10 kg max load capacity 5-year warranty



Product Specifications

Colour Name	Black
Colour Type	Structured
Main material	Metal
Product Version	1.0
Height adjustable?	No
Lock Type	Security Screw
Max weight capacity (kg)	10
Mounting	VESA
Mounting Type	Wall
Tilt angle range	90
Units per Box	1
Unit Weight	0.44 kg
Box Weight	0.52 kg
Warranty	5 Years

Product Dimensions

Unit Depth	58.6 mm
Unit Height	89.6 mm
Unit Weight	0.44 kg

Package Dimensions

Box Depth	150 mm
Box Height	135 mm
Box Width	115 mm



Made in the EU

www.ergonomic.solutions