

# Latitude 7410

## Service Manual



## Notes, cautions, and warnings

 **NOTE:** A NOTE indicates important information that helps you make better use of your product.

 **CAUTION:** A CAUTION indicates either potential damage to hardware or loss of data and tells you how to avoid the problem.

 **WARNING:** A WARNING indicates a potential for property damage, personal injury, or death.

© 2020 Dell Inc. or its subsidiaries. All rights reserved. Dell, EMC, and other trademarks are trademarks of Dell Inc. or its subsidiaries. Other trademarks may be trademarks of their respective owners.

<b>1 Working on your computer.....</b>	<b>5</b>
Safety instructions.....	5
Working inside your computer.....	5
After working inside your computer.....	7
<b>2 Removing and installing components.....</b>	<b>8</b>
Recommended tools.....	8
Screw list.....	8
Base cover.....	9
Removing the base cover.....	9
Installing the base cover.....	12
Battery.....	14
Lithium-ion battery precautions.....	14
Removing the battery.....	14
Installing the battery.....	15
Solid-state drive.....	16
Removing the solid state drive.....	16
Installing the solid state drive.....	18
WWAN card.....	21
Removing the WWAN card.....	21
Installing the WWAN card.....	22
WLAN antennae bracket.....	24
Removing the WLAN antenna bracket.....	24
Installing the WLAN antenna bracket.....	25
Palmrest antenna (Optional).....	26
Removing the Palmrest antenna (optional).....	26
Installing the Palmrest antenna (optional).....	26
Heatsink assembly.....	27
Removing the heatsink assembly.....	27
Installing the heatsink assembly.....	28
Display assembly.....	30
Removing the display assembly.....	30
Installing the display assembly.....	31
Speakers.....	32
Removing the speaker.....	32
Installing the speaker.....	33
Smart card reader.....	34
Removing the smart card reader.....	34
Installing the smart card reader.....	35
I/O board.....	36
Removing the I/O board.....	36
Installing the I/O board.....	37
Power button with fingerprint reader.....	38
Removing the power button with fingerprint reader.....	38










Installing the power button with fingerprint reader.....	39
System board.....	39
Removing the system board.....	39
Installing the system board.....	41
Keyboard.....	42
Removing the keyboard.....	42
Installing the keyboard.....	44
Palmrest assembly.....	46
Removing the palmrest assembly.....	46
Installing the palmrest assembly.....	46
<b>3 Troubleshooting.....</b>	<b>48</b>
Recovering the operating system.....	48
Dell SupportAssist Pre-boot System Performance Check diagnostics.....	48
Running the SupportAssist Pre-Boot System Performance Check.....	48
Validation Tools .....	49
System diagnostic lights.....	55
Flashing BIOS (USB key).....	56
Flashing the BIOS.....	57
Backup media and recovery options.....	57
WiFi power cycle.....	57
LCD Built-in Self Test .....	57
BIOS recovery.....	58
BIOS recovery using hard drive.....	58
BIOS recovery using USB drive.....	59
M-BIST.....	59
RTC reset and Flea power release.....	60
<b>4 Getting help and contacting Dell.....</b>	<b>61</b>



# Working on your computer

## Safety instructions


Use the following safety guidelines to protect your computer from potential damage and to ensure your personal safety. Unless otherwise noted, each procedure included in this document assumes that you have read the safety information that shipped with your computer.

-  **NOTE:** Before working inside your computer, read the safety information that is shipped with your computer. For more safety best practices, see the Regulatory Compliance home page at [www.dell.com/regulatory\\_compliance](http://www.dell.com/regulatory_compliance).
-  **NOTE:** Disconnect your computer from all power sources before opening the computer cover or panels. After you finish working inside the computer, replace all covers, panels, and screws before connecting your computer to an electrical outlet.
-  **CAUTION:** To avoid damaging the computer, ensure that the work surface is flat, dry and clean.
-  **CAUTION:** To avoid damaging the components and cards, handle them by their edges, and avoid touching the pins and the contacts.
-  **CAUTION:** You should only perform troubleshooting and repairs as authorized or directed by the Dell technical assistance team. Damage due to servicing that is not authorized by Dell is not covered by your warranty. See the safety instructions that is shipped with the product or at [www.dell.com/regulatory\\_compliance](http://www.dell.com/regulatory_compliance).
-  **CAUTION:** Before touching anything inside your computer, ground yourself by touching an unpainted metal surface, such as the metal at the back of the computer. While you work, periodically touch an unpainted metal surface to dissipate static electricity which could harm internal components.
-  **CAUTION:** When you disconnect a cable, pull it by its connector or its pull tab, not the cable itself. Some cables have connectors with locking tabs or thumb-screws that you must disengage before disconnecting the cable. When disconnecting cables, keep them evenly-aligned to avoid bending the connector pins. When connecting cables, ensure that the ports and the connectors are correctly oriented and aligned.
-  **CAUTION:** Press and eject any installed card from the media-card reader.
-  **NOTE:** The color of your computer and certain components may appear differently than shown in this document.



## Working inside your computer

### Before working inside your computer

#### About this task

-  **NOTE:** The images in this document may differ from your computer depending on the configuration you ordered.

#### Steps

1. Save and close all open files and exit all open applications.
2. Shut down your computer. Click **Start** >  **Power** > **Shut down**.
  -  **NOTE:** If you are using a different operating system, see the documentation of your operating system for shut-down instructions.
3. Disconnect your computer and all attached devices from their electrical outlets.

4. Disconnect all attached network devices and peripherals, such as keyboard, mouse, and monitor from your computer.



**CAUTION:** To disconnect a network cable, first unplug the cable from your computer and then unplug the cable from the network device.

5. Remove any media card and optical disc from your computer, if applicable.

## Electrostatic discharge—ESD protection

ESD is a major concern when you handle electronic components, especially sensitive components such as expansion cards, processors, memory DIMMs, and system boards. Very slight charges can damage circuits in ways that may not be obvious, such as intermittent problems or a shortened product life span. As the industry pushes for lower power requirements and increased density, ESD protection is an increasing concern.

Due to the increased density of semiconductors used in recent Dell products, the sensitivity to static damage is now higher than in previous Dell products. For this reason, some previously approved methods of handling parts are no longer applicable.

Two recognized types of ESD damage are catastrophic and intermittent failures.

- **Catastrophic** – Catastrophic failures represent approximately 20 percent of ESD-related failures. The damage causes an immediate and complete loss of device functionality. An example of catastrophic failure is a memory DIMM that has received a static shock and immediately generates a "No POST/No Video" symptom with a beep code emitted for missing or nonfunctional memory.
- **Intermittent** – Intermittent failures represent approximately 80 percent of ESD-related failures. The high rate of intermittent failures means that most of the time when damage occurs, it is not immediately recognizable. The DIMM receives a static shock, but the tracing is merely weakened and does not immediately produce outward symptoms related to the damage. The weakened trace may take weeks or months to melt, and in the meantime may cause degradation of memory integrity, intermittent memory errors, etc.

The more difficult type of damage to recognize and troubleshoot is the intermittent (also called latent or "walking wounded") failure.

Perform the following steps to prevent ESD damage:

- Use a wired ESD wrist strap that is properly grounded. The use of wireless anti-static straps is no longer allowed; they do not provide adequate protection. Touching the chassis before handling parts does not ensure adequate ESD protection on parts with increased sensitivity to ESD damage.
- Handle all static-sensitive components in a static-safe area. If possible, use anti-static floor pads and workbench pads.
- When unpacking a static-sensitive component from its shipping carton, do not remove the component from the anti-static packing material until you are ready to install the component. Before unwrapping the anti-static packaging, ensure that you discharge static electricity from your body.
- Before transporting a static-sensitive component, place it in an anti-static container or packaging.

## ESD field service kit

The unmonitored Field Service kit is the most commonly used service kit. Each Field Service kit includes three main components: anti-static mat, wrist strap, and bonding wire.

### Components of an ESD field service kit

The components of an ESD field service kit are:

- **Anti-Static Mat** – The anti-static mat is dissipative and parts can be placed on it during service procedures. When using an anti-static mat, your wrist strap should be snug and the bonding wire should be connected to the mat and to any bare metal on the system being worked on. Once deployed properly, service parts can be removed from the ESD bag and placed directly on the mat. ESD-sensitive items are safe in your hand, on the ESD mat, in the system, or inside a bag.
- **Wrist Strap and Bonding Wire** – The wrist strap and bonding wire can be either directly connected between your wrist and bare metal on the hardware if the ESD mat is not required, or connected to the anti-static mat to protect hardware that is temporarily placed on the mat. The physical connection of the wrist strap and bonding wire between your skin, the ESD mat, and the hardware is known as bonding. Use only Field Service kits with a wrist strap, mat, and bonding wire. Never use wireless wrist straps. Always be aware that the internal wires of a wrist strap are prone to damage from normal wear and tear, and must be checked regularly with a wrist strap tester in order to avoid accidental ESD hardware damage. It is recommended to test the wrist strap and bonding wire at least once per week.
- **ESD Wrist Strap Tester** – The wires inside of an ESD strap are prone to damage over time. When using an unmonitored kit, it is a best practice to regularly test the strap prior to each service call, and at a minimum, test once per week. A wrist strap tester is the best method for doing this test. If you do not have your own wrist strap tester, check with your regional office to find out if they have one. To perform the test, plug the wrist-strap's bonding-wire into the tester while it is strapped to your wrist and push the button to test. A green LED is lit if the test is successful; a red LED is lit and an alarm sounds if the test fails.
- **Insulator Elements** – It is critical to keep ESD sensitive devices, such as plastic heat sink casings, away from internal parts that are insulators and often highly charged.

- **Working Environment** – Before deploying the ESD Field Service kit, assess the situation at the customer location. For example, deploying the kit for a server environment is different than for a desktop or portable environment. Servers are typically installed in a rack within a data center; desktops or portables are typically placed on office desks or cubicles. Always look for a large open flat work area that is free of clutter and large enough to deploy the ESD kit with additional space to accommodate the type of system that is being repaired. The workspace should also be free of insulators that can cause an ESD event. On the work area, insulators such as Styrofoam and other plastics should always be moved at least 12 inches or 30 centimeters away from sensitive parts before physically handling any hardware components
- **ESD Packaging** – All ESD-sensitive devices must be shipped and received in static-safe packaging. Metal, static-shielded bags are preferred. However, you should always return the damaged part using the same ESD bag and packaging that the new part arrived in. The ESD bag should be folded over and taped shut and all the same foam packing material should be used in the original box that the new part arrived in. ESD-sensitive devices should be removed from packaging only at an ESD-protected work surface, and parts should never be placed on top of the ESD bag because only the inside of the bag is shielded. Always place parts in your hand, on the ESD mat, in the system, or inside an anti-static bag.
- **Transporting Sensitive Components** – When transporting ESD sensitive components such as replacement parts or parts to be returned to Dell, it is critical to place these parts in anti-static bags for safe transport.

## ESD protection summary

It is recommended that all field service technicians use the traditional wired ESD grounding wrist strap and protective anti-static mat at all times when servicing Dell products. In addition, it is critical that technicians keep sensitive parts separate from all insulator parts while performing service and that they use anti-static bags for transporting sensitive components.

# After working inside your computer

## About this task

 **CAUTION:** Leaving stray or loose screws inside your computer may severely damage your computer.

## Steps

1. Replace all screws and ensure that no stray screws remain inside your computer.
2. Connect any external devices, peripherals, or cables you removed before working on your computer.
3. Replace any media cards, discs, or any other parts that you removed before working on your computer.
4. Connect your computer and all attached devices to their electrical outlets.
5. Turn on your computer.

# Removing and installing components

## Recommended tools



The procedures in this document require the following tools:

- Phillips #0 screwdriver
- Phillips #1 screwdriver
- Plastic scribe: Recommended for field technicians.

**NOTE:** The #0 screw driver is for screws 0-1 and the #1 screw driver is for screws 2-4.



## Screw list





**NOTE:** When removing screws from a component, it is recommended to note the screw type, the quantity of screws, and then place them in a screw storage box. This is to ensure that the correct number of screws and correct screw type is restored when the component is replaced.

**NOTE:** Some computers have magnetic surfaces. Ensure that the screws are not left attached to such surface when replacing a component.

**NOTE:** Screw color may vary with the configuration ordered.

**Table 1. Screw list**

Component	Secured to	Screw type	Quantity	Screw image
1. SSD thermal plate	1. System board	M2x2	1. 1	
2. SSD	2. System board		2. 1	
3. eDP bracket	3. System board		3. 1	
4. Keyboard	4. Keyboard support bracket		4. 2	
1. WLAN antenna bracket	1. System board	M2x2.5	1. 1	
2. Fan cage	2. Palmrest assembly		2. 1	
3. Heatsink assembly	3. System board		3. 4	
4. Wireless antenna module	4. System board		4. 2	
5. Fingerprint bracket	5. Palmrest assembly		5. 1	
6. I/O board (with FPR)	6. Palmrest assembly		6. 1	
7. I/O board (without FPR)	7. Palmrest assembly		7. 2	
8. Power button	8. Palmrest assembly		8. 2	
9. Smart card reader	9. Palmrest assembly		9. 4	
10. System board	10. Palmrest assembly		10. 1	
	11. Palmrest assembly		11. 2	

Component	Secured to	Screw type	Quantity	Screw image
11. Optional palmrest antenna				
Hinges	Palmrest assembly	M2.5x4	4	
F-beam FPC	I/O daughterboard	M2x3.5	2	
USB Type-C bracket	System board	M2x5	3	
Keyboard	Palmrest assembly	M1.6x2	–	
1. Carbon Fiber			1. 19	
2. Aluminum			2. 26	

## Base cover

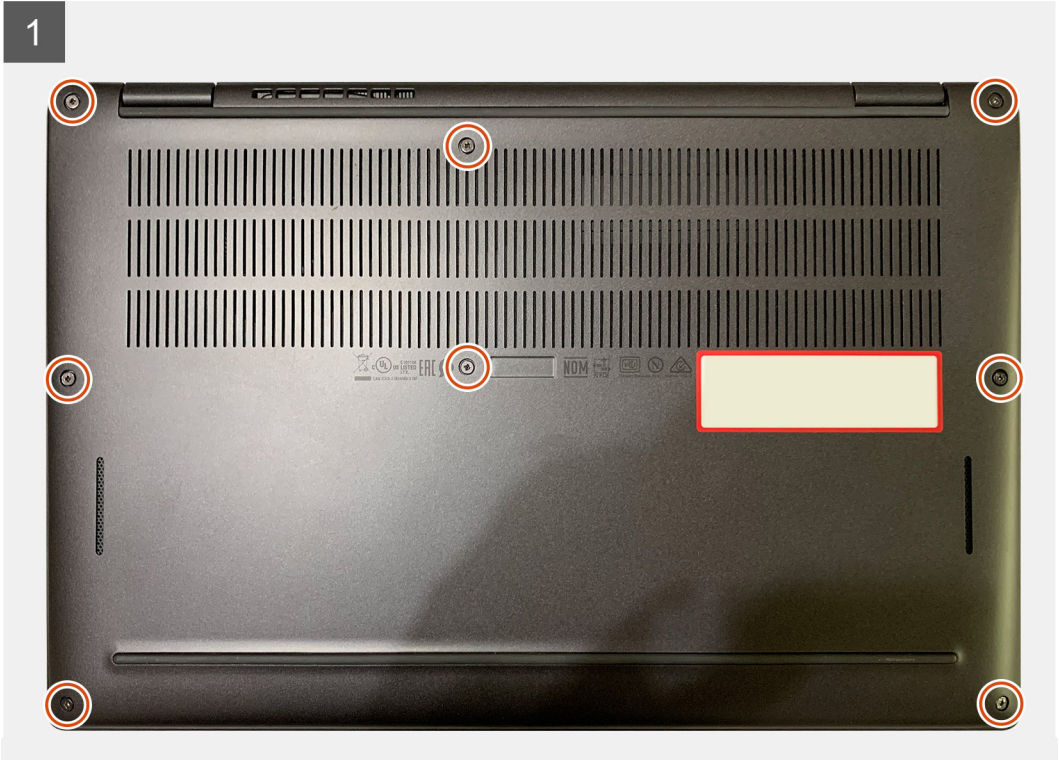
### Removing the base cover

#### Prerequisites

1. Follow the procedure in [Before working inside your computer.](#)

#### About this task


The following images indicate the location of the base cover and provide a visual representation of the removal procedure.







## Steps

1. Loosen the eight captive screws that secure the base cover to the palmrest assembly.
2. Starting from the top-left corner, use a plastic scribe to pry the base cover outwards to release the base cover from the palm-rest assembly.
3. Pry the base cover and remove it from the palm-rest and keyboard assembly.  
 **CAUTION: Do not slide the scribe through the edge of the top side of the base cover as it damages the latches inside the base cover.**
4. Use the pull-tab and disconnect the battery from the system board.

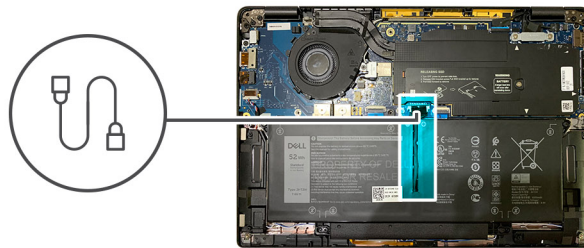
## Installing the base cover

### Prerequisites

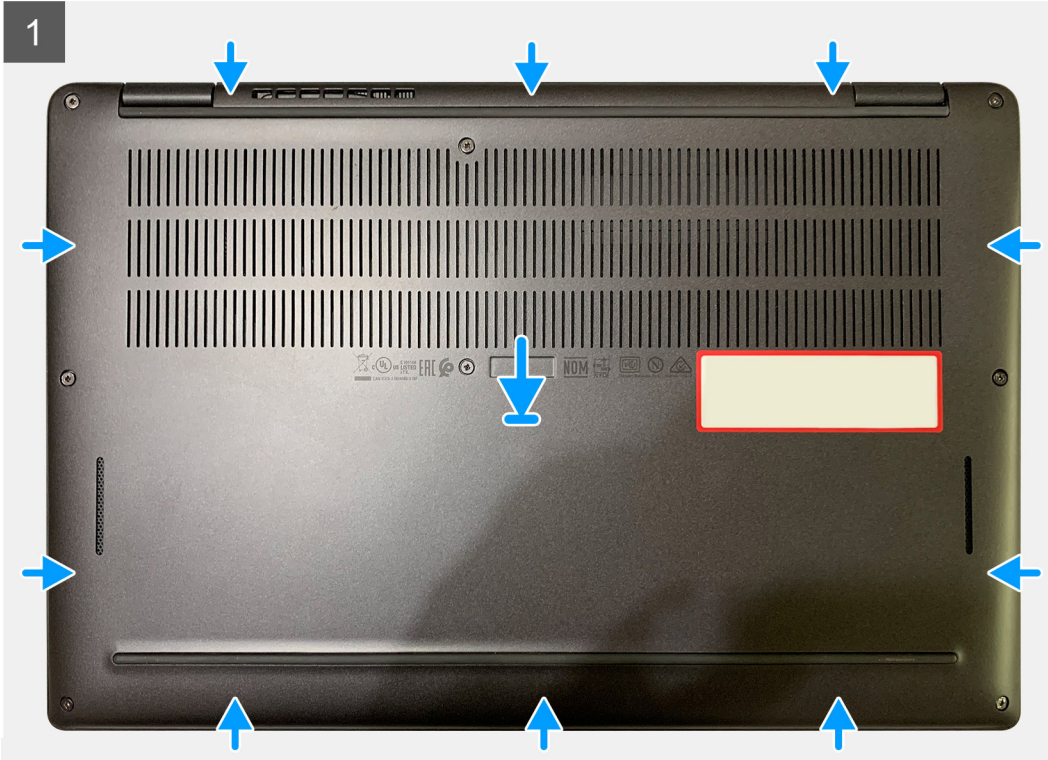
If you are replacing a component, remove the existing component before performing the installation procedure.

### About this task

The following images indicate the location of the base cover and provide a visual representation of the installation procedure.







## Steps

1. Connect the battery cable to the system board.
2. Align the screw holes on the base cover with the screw holes on the palmrest assembly, and then snap the base cover into place.
3. Tighten the eight captive screws that secure the base cover to the palmrest assembly.

## Next steps

1. Follow the procedure in [After working inside your computer](#).

# Battery

## Lithium-ion battery precautions

### CAUTION:

- Exercise caution when handling Lithium-ion batteries.
- Discharge the battery as much as possible before removing it from the system. This can be done by disconnecting the AC adapter from the system to allow the battery to drain.
- Do not crush, drop, mutilate, or penetrate the battery with foreign objects.
- Do not expose the battery to high temperatures, or disassemble battery packs and cells.
- Do not apply pressure to the surface of the battery.
- Do not bend the battery.
- Do not use tools of any kind to pry on or against the battery.
- Ensure any screws during the servicing of this product are not lost or misplaced, to prevent accidental puncture or damage to the battery and other system components.
- If the battery gets stuck inside your computer as a result of swelling, do not try to release it as puncturing, bending, or crushing a lithium-ion battery can be dangerous. In such an instance, contact Dell technical support for assistance. See [www.dell.com/contactdell](http://www.dell.com/contactdell).
- Always purchase genuine batteries from [www.dell.com](http://www.dell.com) or authorized Dell partners and resellers.

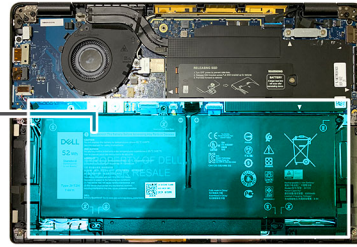
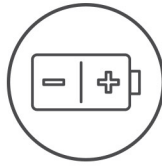
## Removing the battery

### Prerequisites

1. Follow the procedure in [Before working inside your computer](#).
2. Remove the:
  - a. [Base cover](#)

### About this task

The following images indicate the location of the battery and provide a visual representation of the removal procedure.



## Steps

1. Using the pull tab, remove the battery cable from connector the system board.
2. Loosen the four captive screws that secure the base cover to the palmrest assembly.
3. Lift and remove the battery from the system unit.

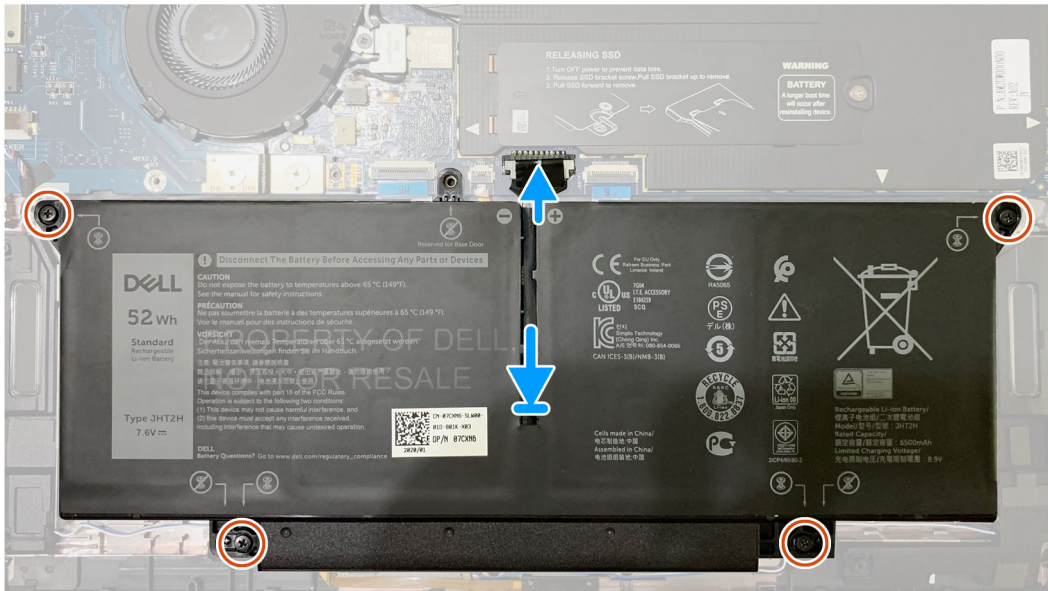
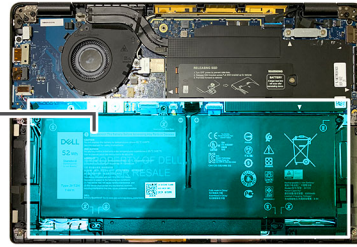
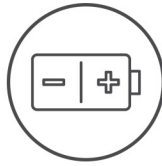
## Installing the battery

### Prerequisites

If you are replacing a component, remove the existing component before performing the installation procedure.

### About this task

The following images indicate the location of the battery and provide a visual representation of the installation procedure.



## Steps

1. Align the screw holes on the battery with the screw holes on the palmrest assembly, and then snap the battery into place.
2. Tighten the four captive screws that secure the battery to the palmrest assembly.
3. Replace the battery cable to connector on the system board.

## Next steps

1. Install the:
  - a. [Base cover](#).
2. Follow the procedure in [After working inside your computer](#).

# Solid-state drive

## Removing the solid state drive

### Prerequisites

1. Follow the procedure in [Before working inside your computer](#).
2. Remove the:
  - a. [Base cover](#)

### About this task

The following images indicate the location of the solid state drive and provide a visual representation of the removal procedure.



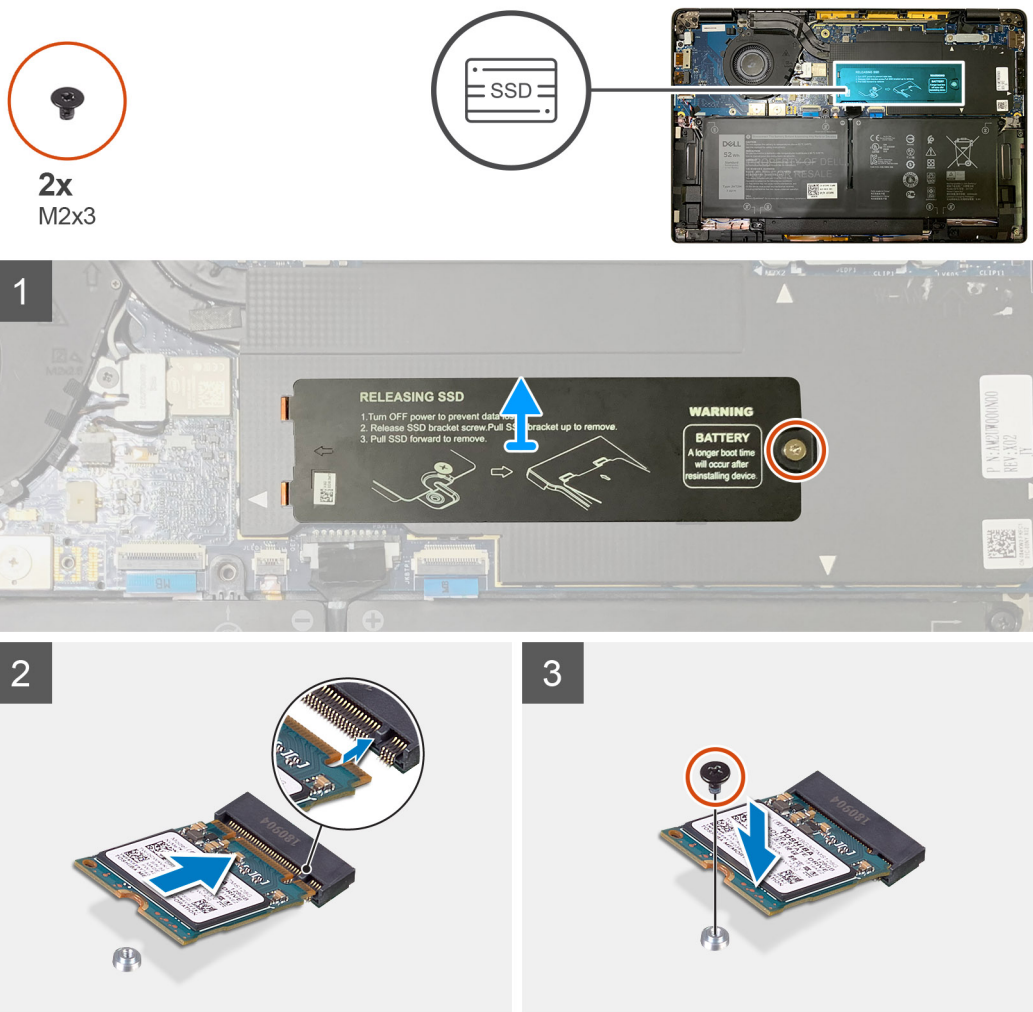


Figure 1. 2230 SSD

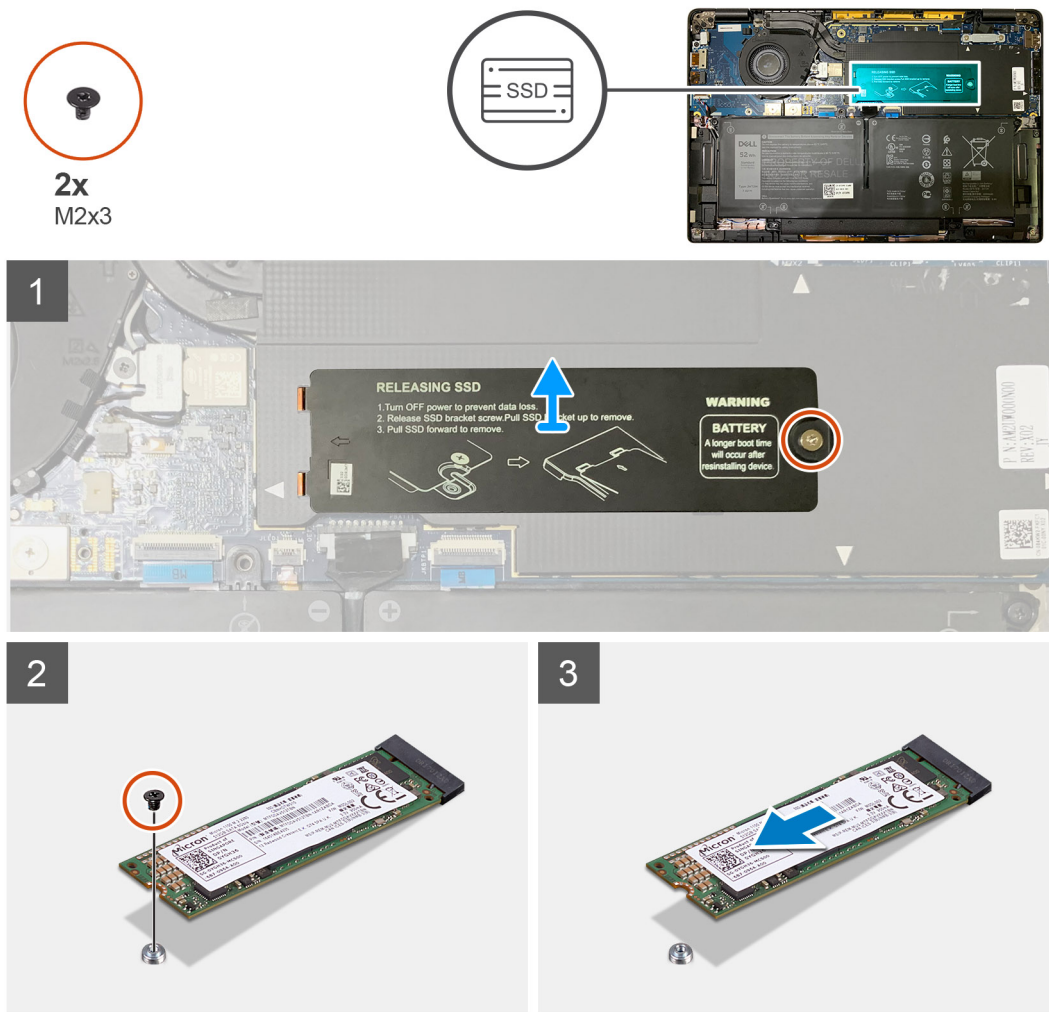


Figure 2. 2280 SSD

**Steps**

1. Remove the single M2x2 screw that secures the SSD thermal plate to the system board and lift to remove it from over the SSD.
2. Remove the single M2x2 screw that secures the SSD to the system board.
3. Slide the SSD out from the M.2 slot on the system board.

## Installing the solid state drive

**Prerequisites**

If you are replacing a component, remove the existing component before performing the installation procedure.

**About this task**

The following images indicate the location of the solid state drive and provide a visual representation of the installation procedure.



Figure 3. 2230 SSD

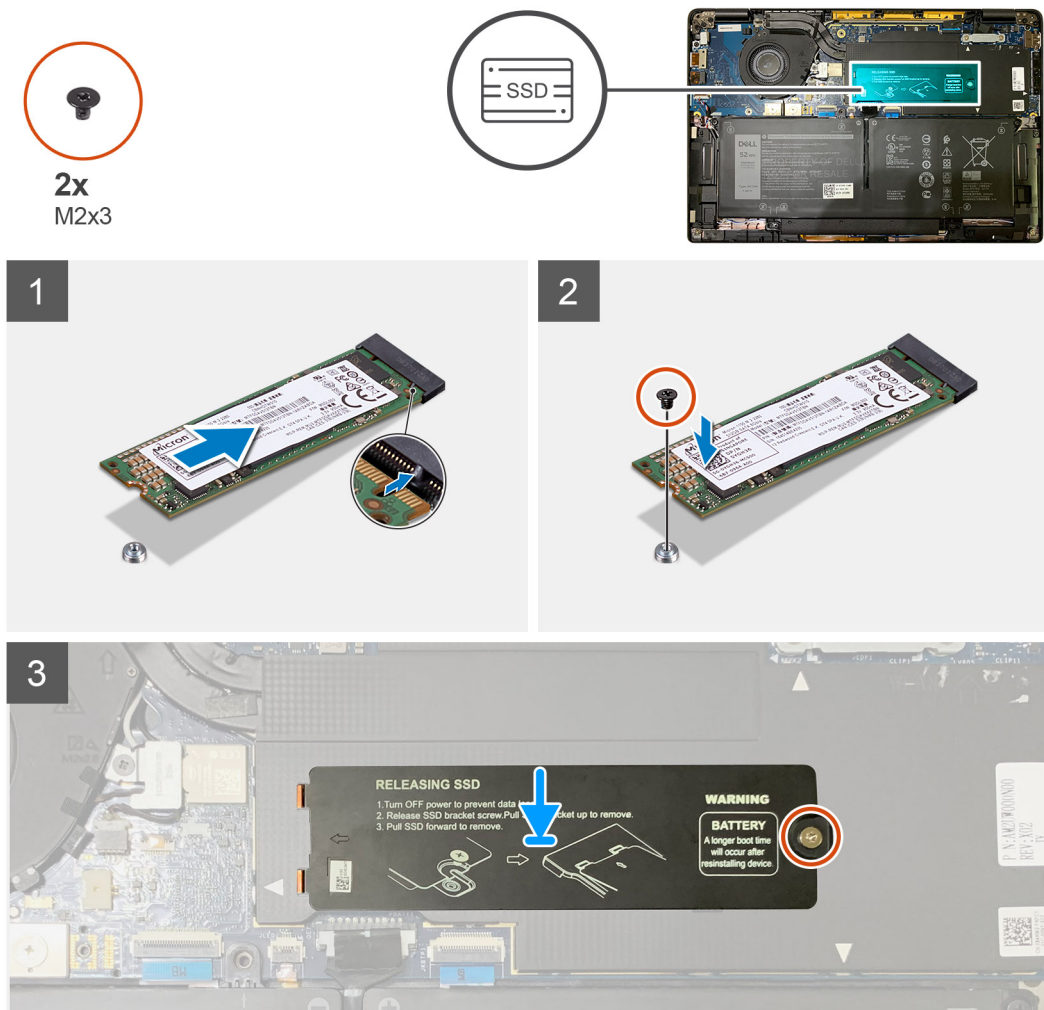
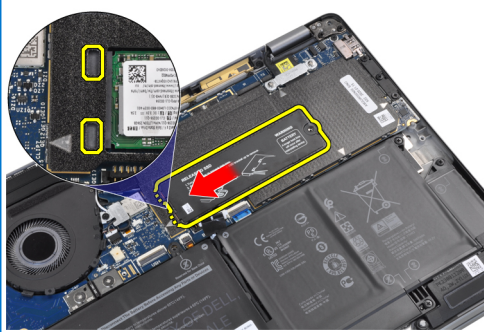


Figure 4. 2280 SSD

### Steps

1. **NOTE:** Install the M.2 2230 SSD to the SSD bracket so that the top side of the SSD (with the sticker) is facing up.  
Align the notch and slide the solid-state drive into the M.2 slot of the system board.
2. Push the SSD to align the screw holes on the system board and replace the single M2x2 screw securing it to the system board.
3. **NOTE:** Slide the SSD plate into place over the SSD so that the tabs on the SSD plate fit into the openings on the system board shielding cover.



Replace the SSD thermal plate on top of the SSD and secure it using the single M2x2 screw to the system board.



**CAUTION:** A thermal pad is included with the SSD plate and must always be adhered to the plate. If in the process of replacing the SSD, the pad is separated from the plate or gets adhered to the SSD, technicians must re-adhere the thermal pad to the SSD plate before re-installing the plate to the system.

**NOTE:** System will be reboot 2-3 times automatically within 1 min, after SSD/ WWAN card and battery cable is re-connected.

### Next steps

If you are replacing a component, remove the existing component before performing the installation procedure.

1. Install the:
  - a. [Base cover](#)
2. Follow the procedure in [After working inside your computer](#).

## WWAN card

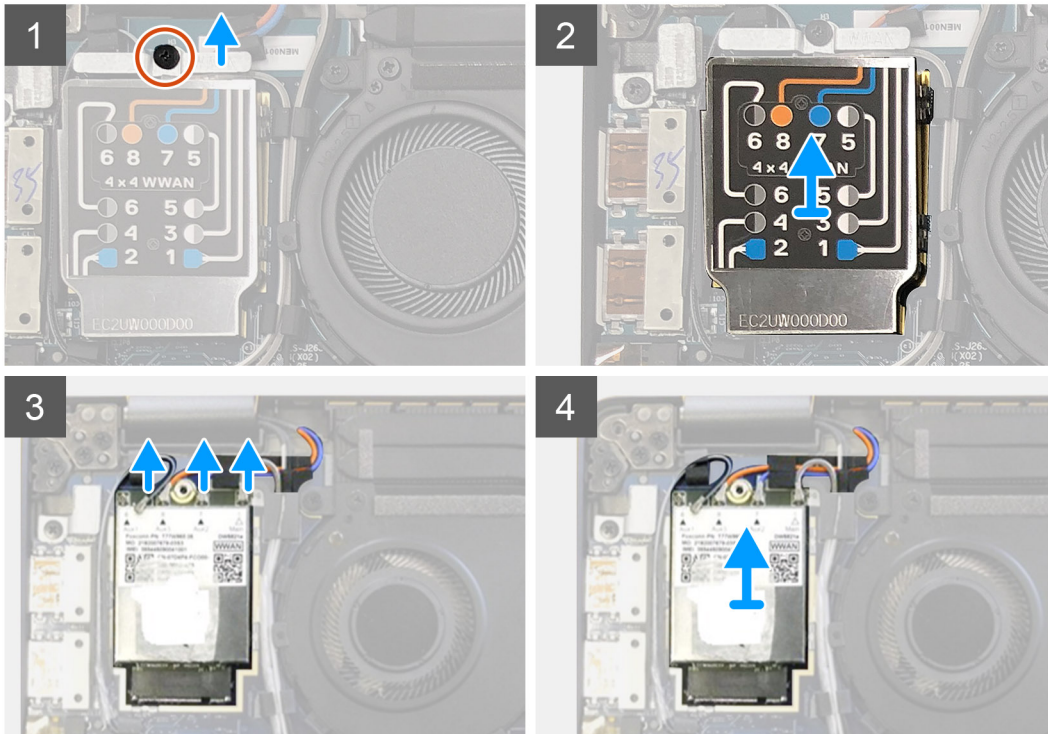
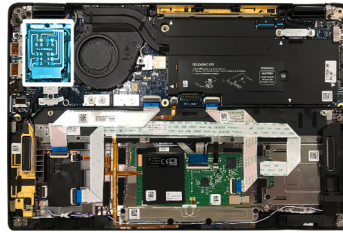
### Removing the WWAN card

#### Prerequisites

1. Follow the procedure in [Before working inside your computer](#).
2. Remove the:
  - a. [Base cover](#)

#### About this task

The following images indicate the location of the WWAN card and provide a visual representation of the removal procedure.



### Steps

1. Remove the single M2x2.5 screw securing the WWAN bracket to the WWAN card.
2. Pry off the WWAN shielding cover from the top-left side of the shielding cover.
3. Disconnect the antenna cables from the WWAN card.
4. Lift and remove the WWAN card from its slot on the I/O board.

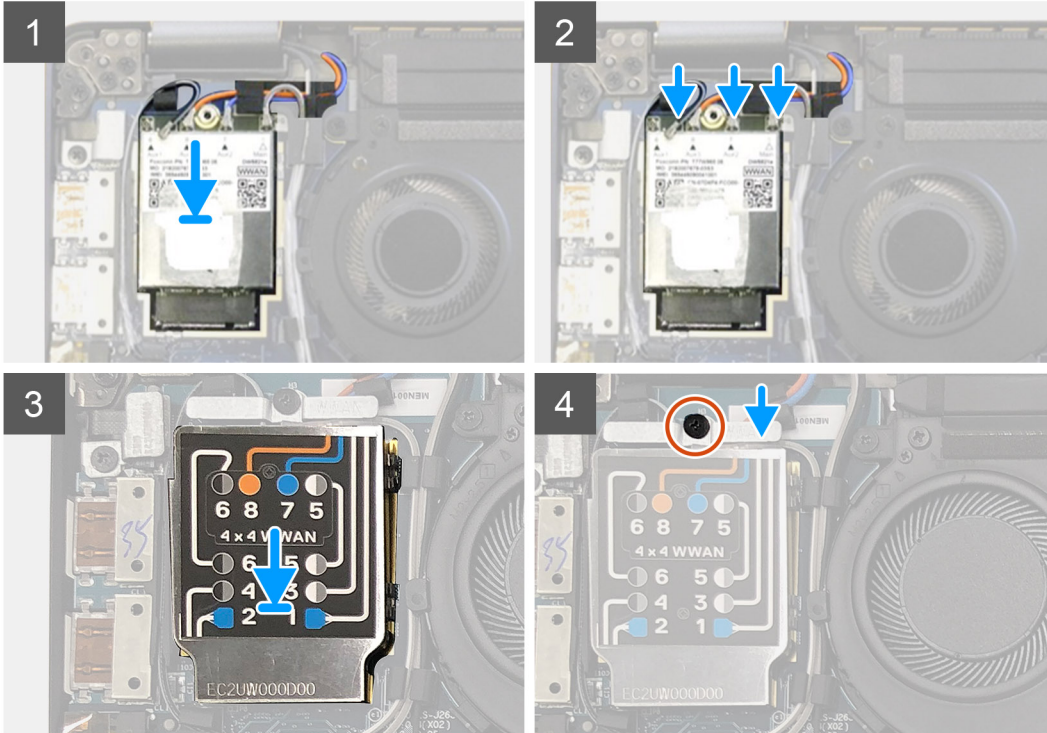
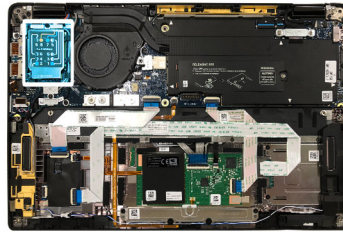
## Installing the WWAN card

### Prerequisites

If you are replacing a component, remove the existing component before performing the installation procedure.

### About this task

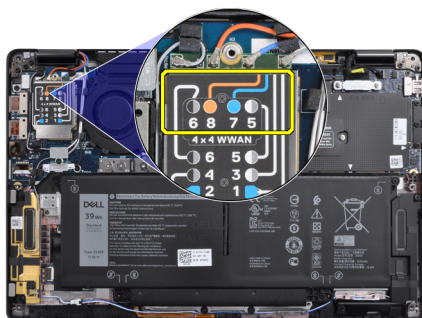
The following images indicate the location of the base cover and provide a visual representation of the installation procedure.



### Steps

1. Replace the WWAN card into its slot on the I/O board and connect the antennae cables.
2. Replace the WWAN shielding cover on top of the WWAN card.

**i NOTE:** For models shipped with WWAN antennas, the WWAN antenna connections on the WWAN card are numbered and color-coded. Connect the antennas to the correct pins on the WWAN card in accordance with the label on the WWAN card shielding cover.



**Table 2. WWAN antenna cable connection guide**

Cable Pin Number	Antenna Cable
5	Gray/White Main
6	Black/Gray Auxiliary

Cable Pin Number	Antenna Cable
7	Blue Auxiliary
8	Orange Auxiliary

- Replace the WWAN bracket on top of the antennae cables.
- Replace the single M2x2.5 screw securing it to the I/O board.

**NOTE:** System will be reboot 2-3 times automatically within 1 min, after SSD/ WWAN card and battery cable is re-connected.

### Next steps

If you are replacing a component, remove the existing component before performing the installation procedure.

- Install the:
  - Base cover
- Follow the procedure in [After working inside your computer](#).

## WLAN antennae bracket

### Removing the WLAN antenna bracket

#### Prerequisites

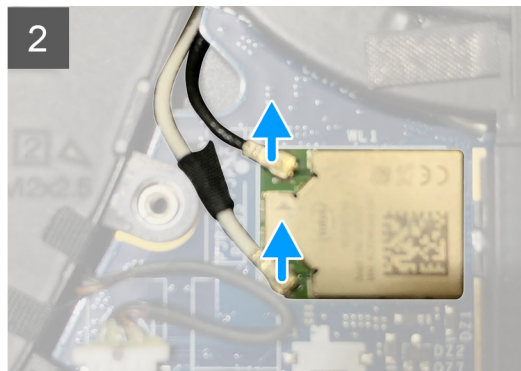
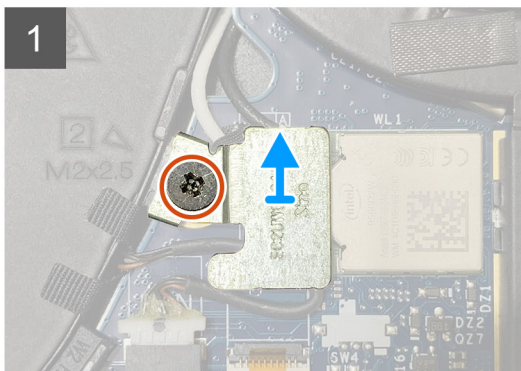
- Follow the procedure in [Before working inside your computer](#).
- Remove the:
  - Base cover

#### About this task

The following images indicate the location of the WLAN antenna bracket and provide a visual representation of the removal procedure.



2x  
M2x2.5



#### Steps

- Remove the two M2x2.5 screws that secure the WLAN antenna bracket to the system board.
- Lift and remove the WLAN antenna bracket from over the antennae connectors.



3. Disconnect the antenna cable from WLAN module on the system board.

## Installing the WLAN antenna bracket

### Prerequisites

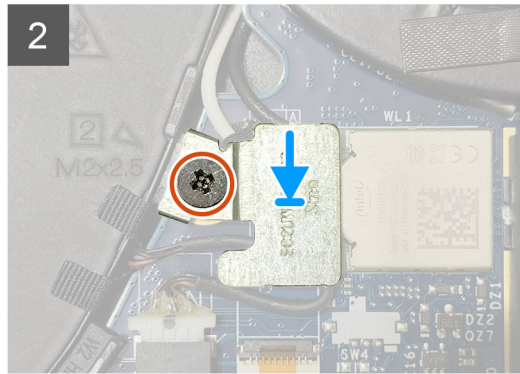
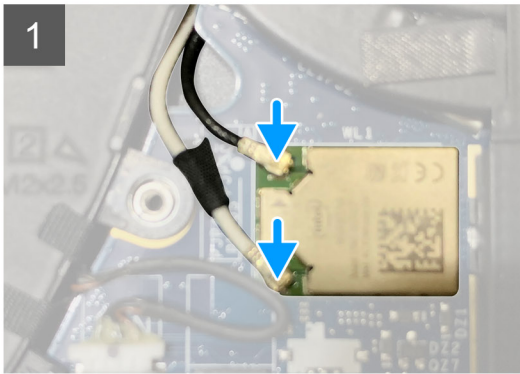
If you are replacing a component, remove the existing component before performing the installation procedure.

### About this task

The following images indicate the location of the WLAN antenna bracket and provide a visual representation of the installation procedure.



**2x**  
M2x2.5



### Steps

1. Connect the antenna cable to the WLAN module on the system board.

**NOTE:** The antenna cable connectors are fragile and utmost care should be taken while replacing them.

**Table 3. Antenna cable guide**

Cable color	Connector
White cable (Main)	White triangle (△) on the WLAN module of the system board
Black cable (Aux)	Solid triangle (▲) on the WLAN module of the system board

2. Align and replace the WLAN antenna bracket on top of the antenna connectors.
3. Replace the single M2x2.5 screws securing the WLAN antenna bracket to the system board.

### Next steps

If you are replacing a component, remove the existing component before performing the installation procedure.

1. Install the:
  - a. [Base cover](#)
2. Follow the procedure in [After working inside your computer](#).

# Palmrest antenna (Optional)

## Removing the Palmrest antenna (optional)

### Prerequisites

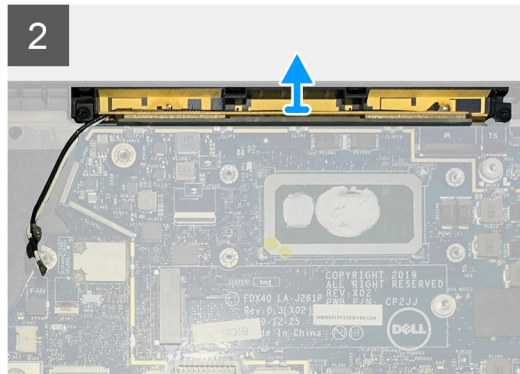
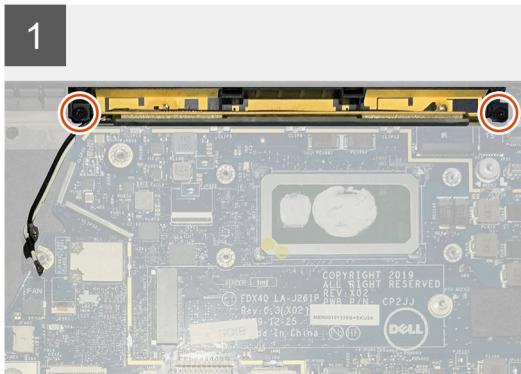
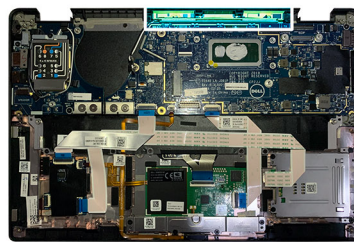
1. Follow the procedure in [Before working inside your computer](#).
2. Remove the:
  - a. [Base cover](#)
  - b. [WLAN antenna bracket](#)

### About this task

The following images indicate the location of the palmrest antenna and provide a visual representation of the removal procedure.



2x  
M2x2.5



### Steps

1. Disconnect and un-thread the WWAN antenna cables.
2. Remove the two M2x2.5 screws securing the WLAN antenna to the palmrest assembly.
3. Remove the palmrest antenna from the palmrest assembly.

## Installing the Palmrest antenna (optional)

### Prerequisites

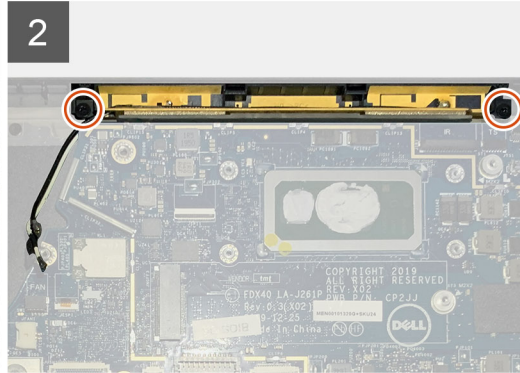
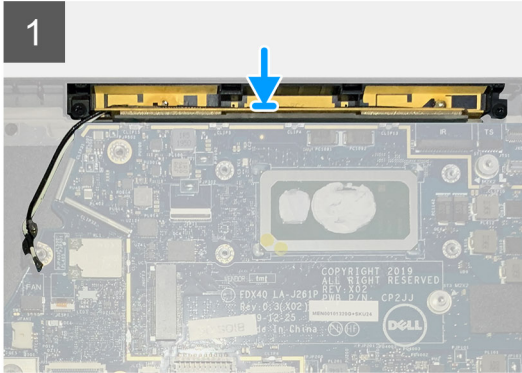
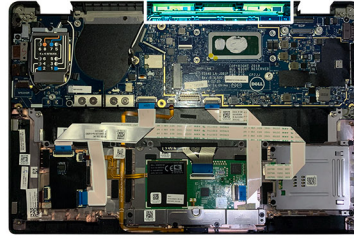
If you are replacing a component, remove the existing component before performing the installation procedure.

### About this task

The following images indicate the location of the optional Palmrest antenna and provide a visual representation of the installation procedure.



2x  
M2x2.5



### Steps

1. Install the palmrest antenna into its slot on the palmrest assembly.
2. Route the antenna cables from underneath the system board along the routing channel.
3. Replace the two M2x2.5 screws securing the palmrest antenna to the palmrest assembly.

### Next steps

If you are replacing a component, remove the existing component before performing the installation procedure.

1. Install the:
  - a. [WLAN antenna bracket](#)
  - b. [Base cover](#)
2. Follow the procedure in [After working inside your computer](#).

## Heatsink assembly

### Removing the heatsink assembly

#### Prerequisites

1. Follow the procedure in [Before working inside your computer](#).
2. Loosen and remove the M2x2 screw on the [SSD thermal plate](#)
3. Remove the:
  - a. [Base cover](#)

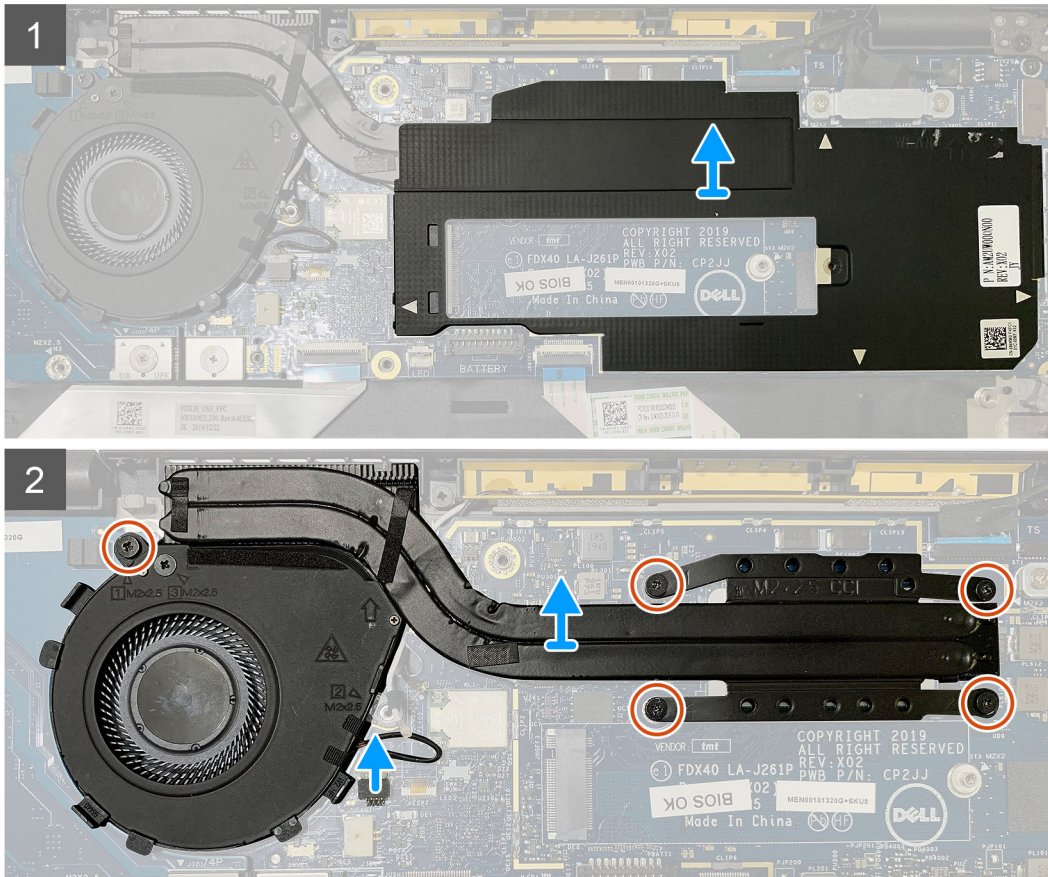
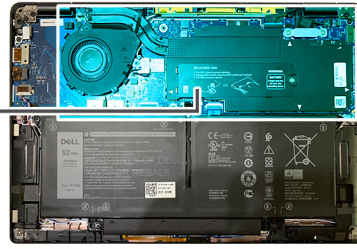
#### About this task

The following images indicate the location of the heatsink assembly and provide a visual representation of the removal procedure.





5x  
M2X2.5



## Steps

1. Pry and remove the system board shield from over the heatsink assembly.

**NOTE:** The white triangles ( $\Delta$ ) symbol highlights the prying points on the system board shield.

2. Remove the single M2x2.5 screw from the fan case and four M2x2.5 screws in reverse sequence (4>3>2>1).
3. Disconnect the fan connector from the system board.
4. Lift and remove the heatsink assembly from the system board.

## Installing the heatsink assembly

### Prerequisites

If you are replacing a component, remove the existing component before performing the installation procedure.

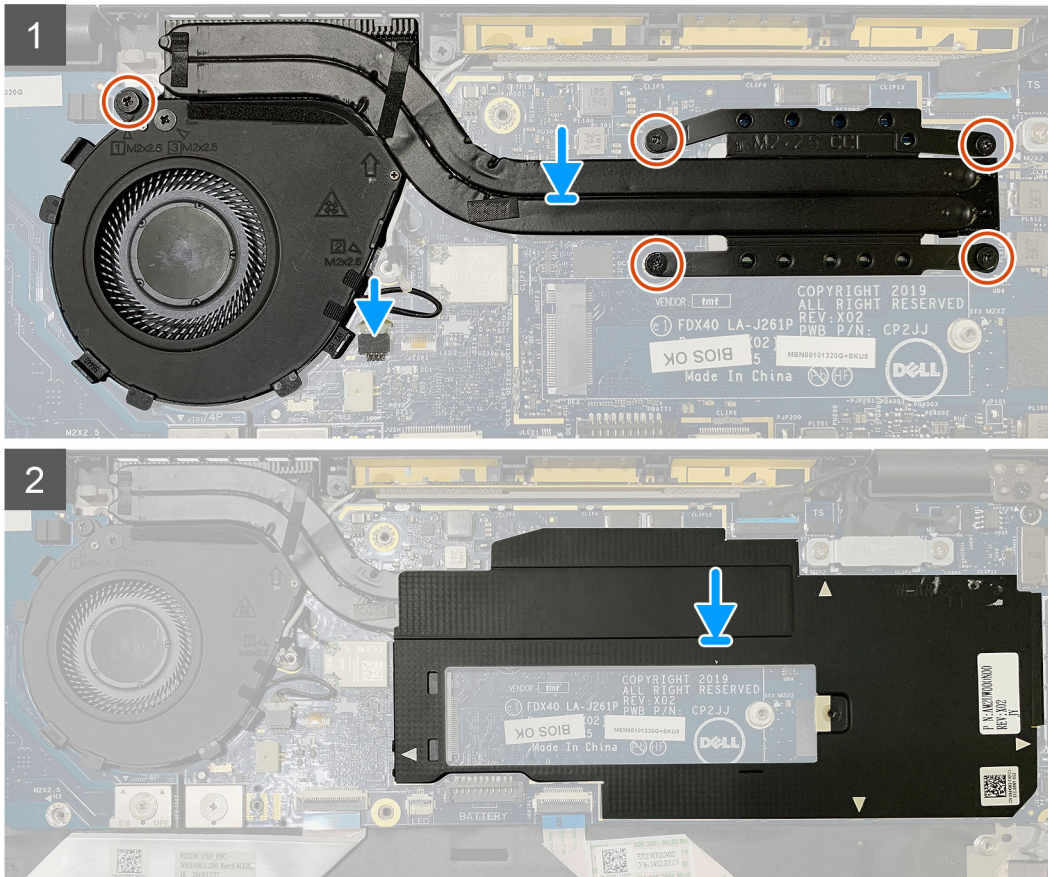
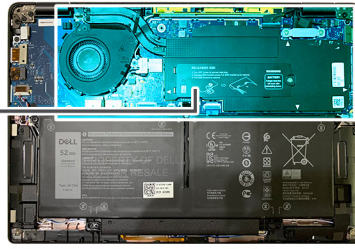
### About this task

The following images indicate the location of the heatsink assembly and provide a visual representation of the installation procedure.





5x  
M2X2.5



### Steps

1. Replace the heatsink assembly into the slot in the palmrest assembly and connect the fan cable to the system board.
2. Replace the single M2x2.5 screw on the fan case and four M2x2.5 screws in sequence (1>2>3>4) securing the heatsink assembly to the system board.
3. Replace the system board shield on top of the heatsink assembly.

### Next steps

If you are replacing a component, remove the existing component before performing the installation procedure.

1. Replace and tighten the M2x2 screw on the [SSD thermal plate](#).
2. Install the:
  - a. [Base cover](#)
3. Follow the procedure in [After working inside your computer](#).

# Display assembly

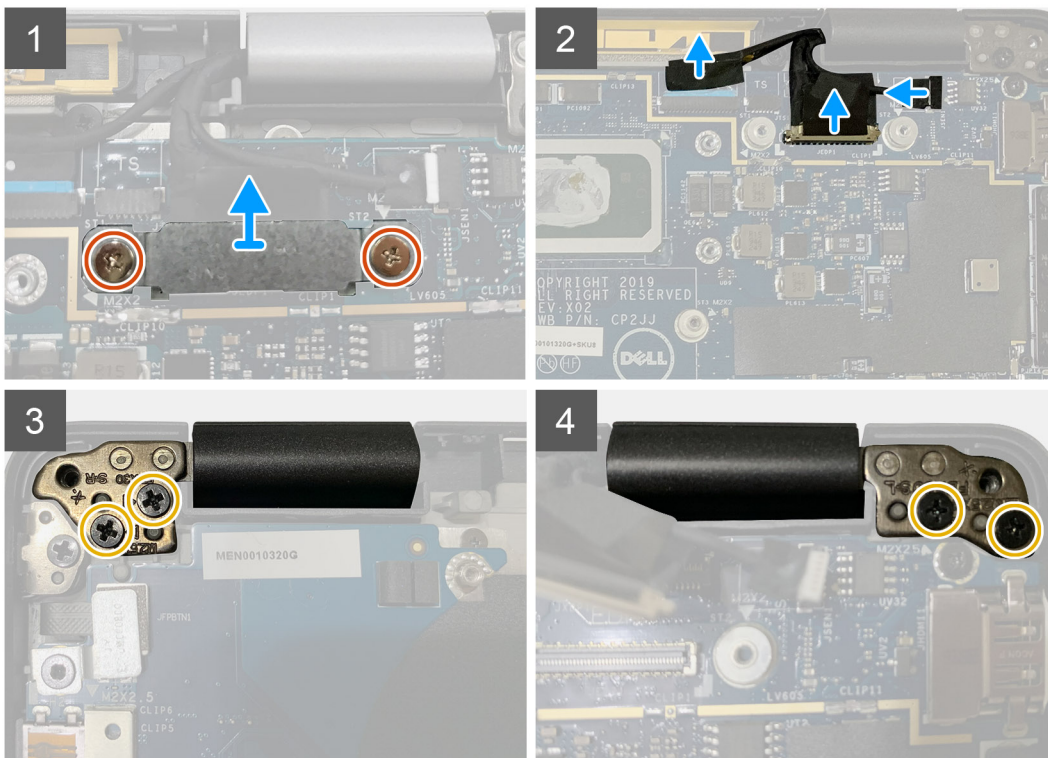
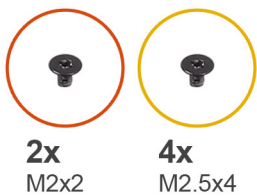
## Removing the display assembly

### Prerequisites

1. Follow the procedure in [Before working inside your computer](#).
2. Remove the:
  - a. [Base cover](#)

### About this task

The following images indicate the location of the display assembly and provide a visual representation of the removal procedure.



### Steps

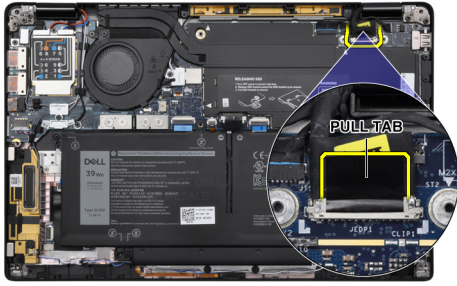
1. **CAUTION:** If the system unit is shipped with WWAN card, remove the WWAN bracket and disconnect the antennae cables.

Remove the two M2x2 screws that secures the eDP bracket to the system board and remove it from the system board.

2. Disconnect the eDP cable, touch cable and camera cable from the system board.

**NOTE:** The display cable and sensor daughter board cable are bundled together with tape. Disconnect the sensor daughter board cable first followed by the display cable. To disconnect the display cable, pull the pull tab vertically.





3. Remove the two M2.5x4 from both left and right hinges.
4. Fold the LCD at a convenient angle to detach it from the palmrest assembly.

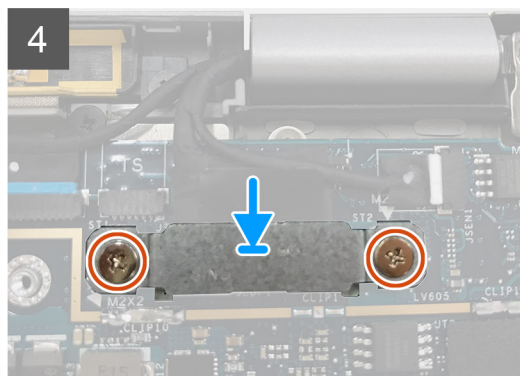
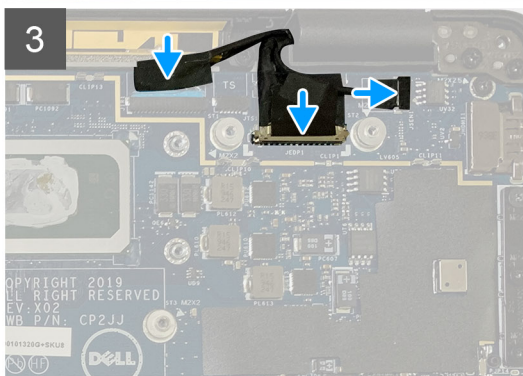
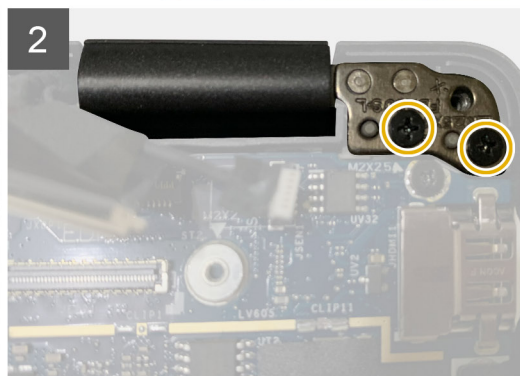
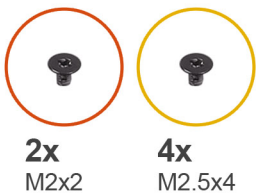
## Installing the display assembly

### Prerequisites

If you are replacing a component, remove the existing component before performing the installation procedure.

### About this task

The following images indicate the location of the display assembly and provide a visual representation of the installation procedure.



## Steps

1. Align and place the display assembly at an convenient angle and replace the two M2.5x4 screws securing the hinges of the display assembly to the palmrest.
2. Connect the eDP cable, camera cable and touch sensor cable to the system board.  
**i NOTE: The display cable and sensor daughter board cable are bundled together with tape. Connect the display cable first followed by sensor daughter board cable.**
3. Replace the eDP bracket on the eDP connector on the system board and replace the two M2x2 screws securing it to the system board.

## Next steps

If you are replacing a component, remove the existing component before performing the installation procedure.

1. Install the:
  - a. [Base cover](#)
2. Follow the procedure in [After working inside your computer](#).

# Speakers

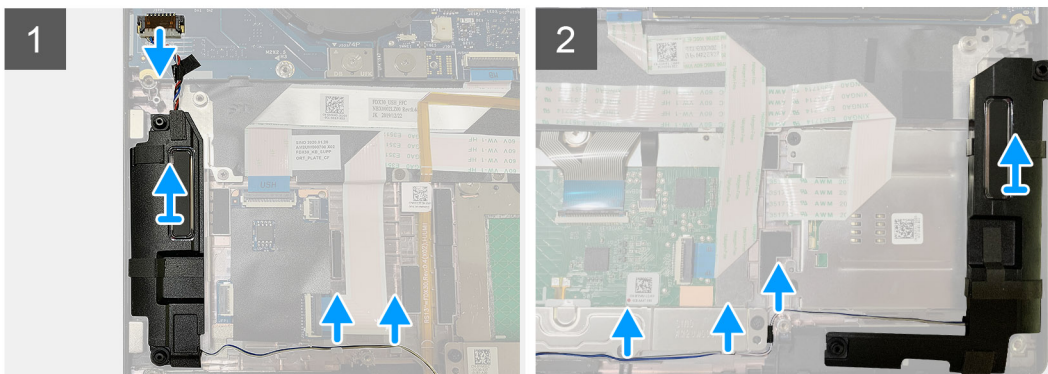
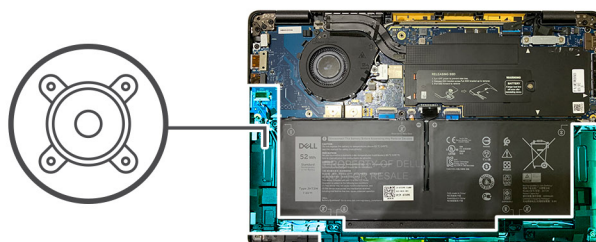
## Removing the speaker

### Prerequisites

1. Follow the procedure in [Before working inside your computer](#).
2. Remove the:
  - a. [Base cover](#)
  - b. [Battery](#)
3. Disconnect the [WWAN antennae cables](#).

### About this task

The following images indicate the location of the speaker and provide a visual representation of the removal procedure.



## Steps

1. Disconnect the speaker cable from its connector on the system board.

2. Remove the speaker cables from the guide path.

**i** **NOTE: The speaker cable is secured with an insulation tape on the touchpad buttons.**

3. Lift and remove the speakers from its slot on the palmrest assembly.

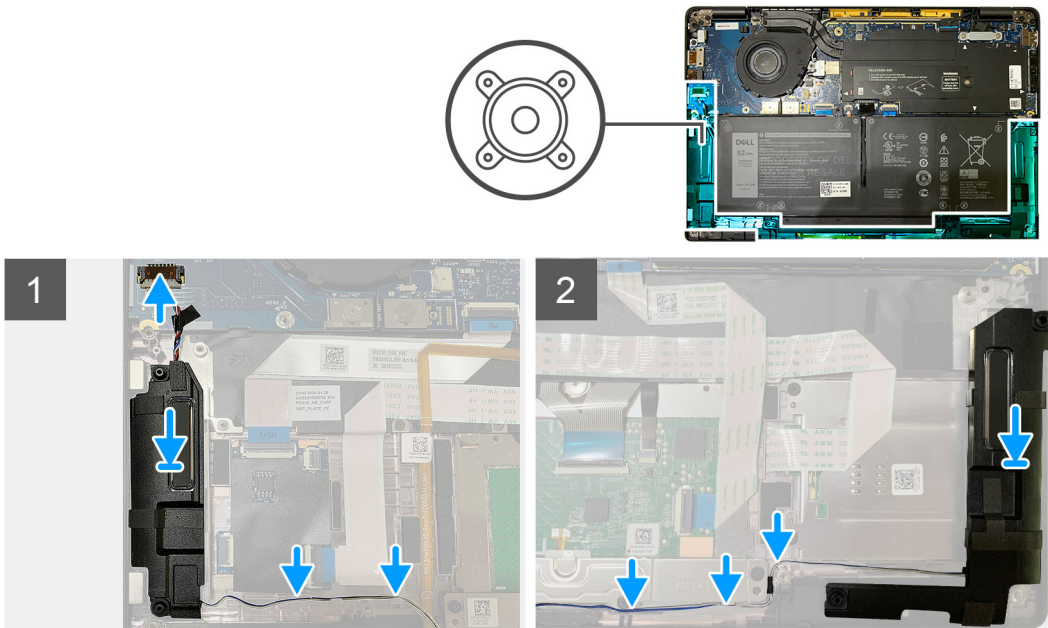
## Installing the speaker

### Prerequisites

If you are replacing a component, remove the existing component before performing the installation procedure.

### About this task

The following images indicate the location of the speaker and provide a visual representation of the installation procedure.



### Steps

1. Connect the speaker cable to its connector on the system board.
2. Align and replace the right speaker into its slot in the palmrest assembly and route the speaker cable along the guide path.

**i** **NOTE: The speaker cable is secured with an insulation tape on the touchpad buttons.**

### Next steps

If you are replacing a component, remove the existing component before performing the installation procedure.

1. Install the:
  - a. [Battery](#)
  - b. [Base cover](#)
2. Connect the [WWAN antennae cables](#).
3. Follow the procedure in [After working inside your computer](#).



# Smart card reader

## Removing the smart card reader

### Prerequisites

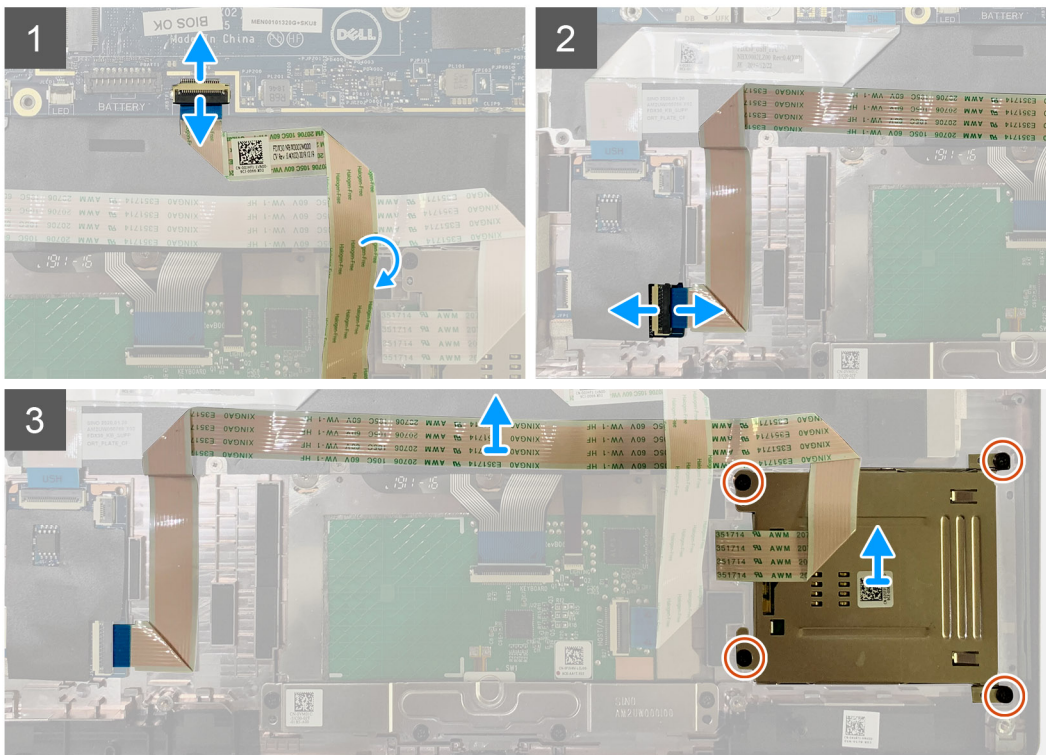
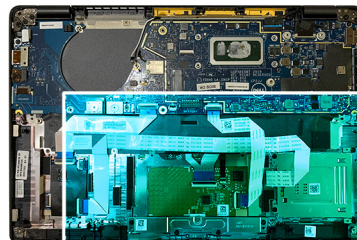
1. Follow the procedure in [Before working inside your computer](#).
2. Remove the:
  - a. [Base cover](#)
  - b. [Battery](#)
  - c. [Speakers](#)
3. Loosen and remove the single M2x2 screw on the [SSD thermal shield](#) and remove the [system board shield](#).

### About this task

The following images indicate the location of the smart card reader and provide a visual representation of the removal procedure.



4x  
M2x2.5



### Steps

1. Disconnect the touchpad cable that is routed over the smart card cable from the system board.
2. Disconnect the smart card reader cable from the USH board.
3. Peel off the smart card reader cable from the palmrest assembly.
4. Remove the four M2x2.5 screws and remove the smart card reader from the palmrest assembly.

# Installing the smart card reader

## Prerequisites

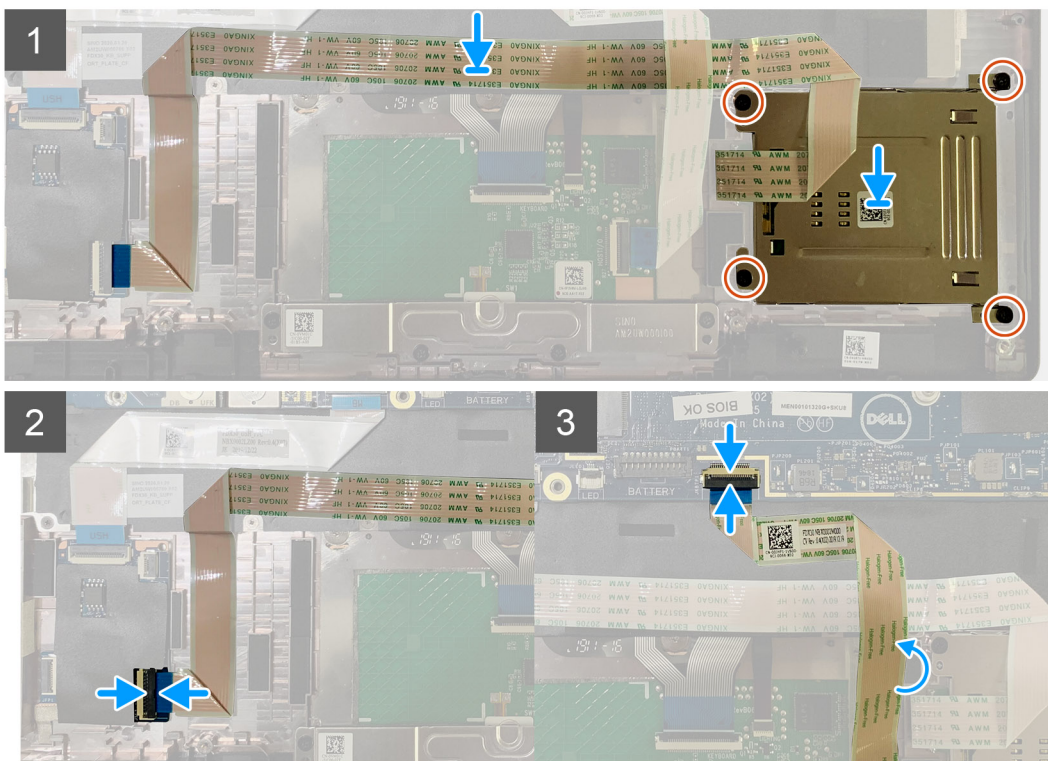
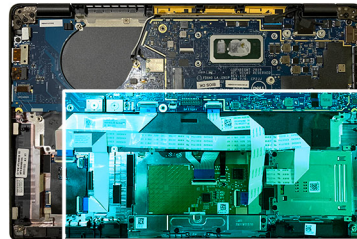
If you are replacing a component, remove the existing component before performing the installation procedure.

## About this task

The following images indicate the location of the smart card reader and provide a visual representation of the installation procedure.



4x  
M2x2.5



## Steps

1. Replace the smart card reader into its slot on the palmrest assembly.
2. Adhere the smart card cable, routing it on the palmrest assembly.
3. Connect the smart card reader cable to the USH board.
4. Route the touchpad cable from over the smart card reader cable and connect it to the system board.

## Next steps

1. Install the:
  - a. [Speakers](#)
  - b. [Battery](#)
  - c. [Base cover](#)
2. Replace and tighten the single M2x2 screw on the [SSD thermal shield](#) and replace the [system board shield](#).
3. Follow the procedure in [After working inside your computer](#).

# I/O board

## Removing the I/O board

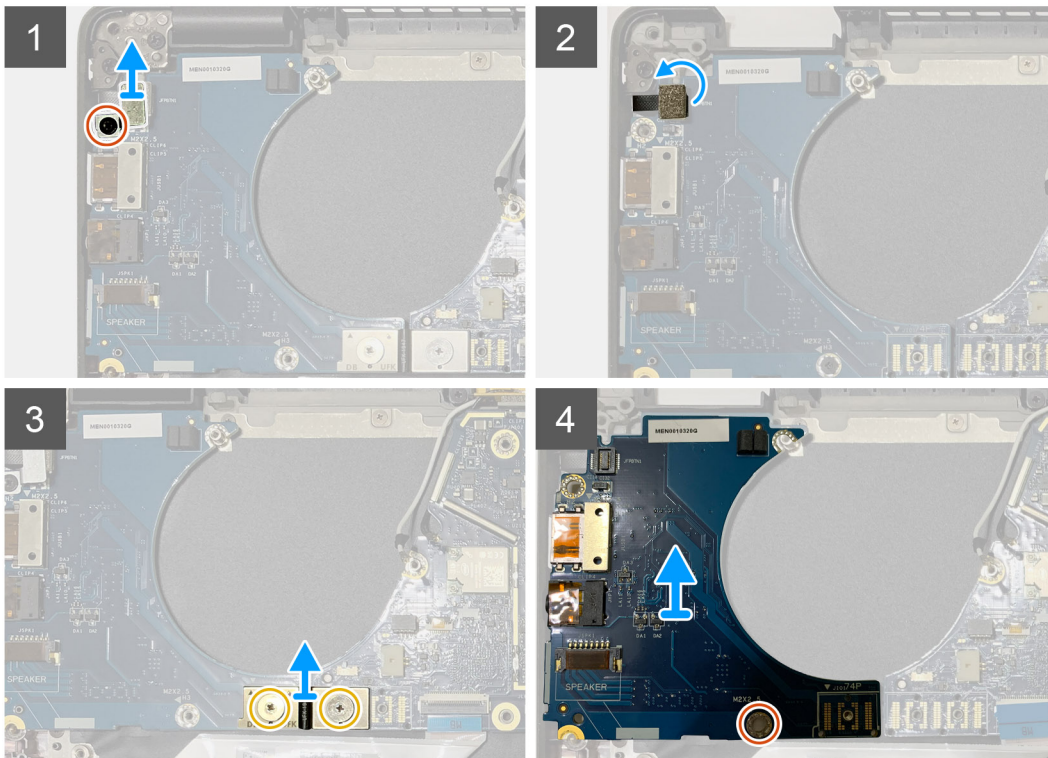
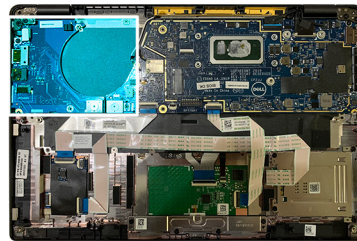
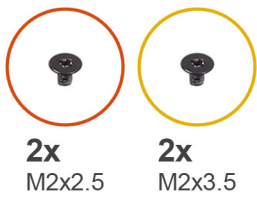
### Prerequisites

1. Follow the procedure in [Before working inside your computer](#).
2. Remove the:
  - a. [Base cover](#)
  - b. [Battery](#)
  - c. [WWAN](#)
  - d. [SSD thermal shield](#)
  - e. [WLAN antennae bracket](#)

### About this task

The following images indicate the location of the I/O board and provide a visual representation of the removal procedure.

**NOTE:** For configurations shipped without a WWAN card, a WWAN shield cover and WWAN bracket will be pre-installed to the system. Follow the steps in the WWAN Card section to remove the shield cover and WWAN bracket.



### Steps

1. Remove the single M2x2.5 screw and remove the finger print reader bracket from over the power button connector.



**NOTE:** System configurations ordered with finger print reader there are two screws securing the finger print reader bracket to the palmrest assembly.

2. Disconnect the power button with finger print reader cable from the I/O daughterboard.  
For system units ordered with WWAN card, disconnect and remove the antennae cables from the WWAN card on the I/O daughterboard.
3. Remove two M2x3.5 screws on the F-beam FPC connector and remove it from the system board.
4. Lift and remove the I/O daughterboard from the system unit.

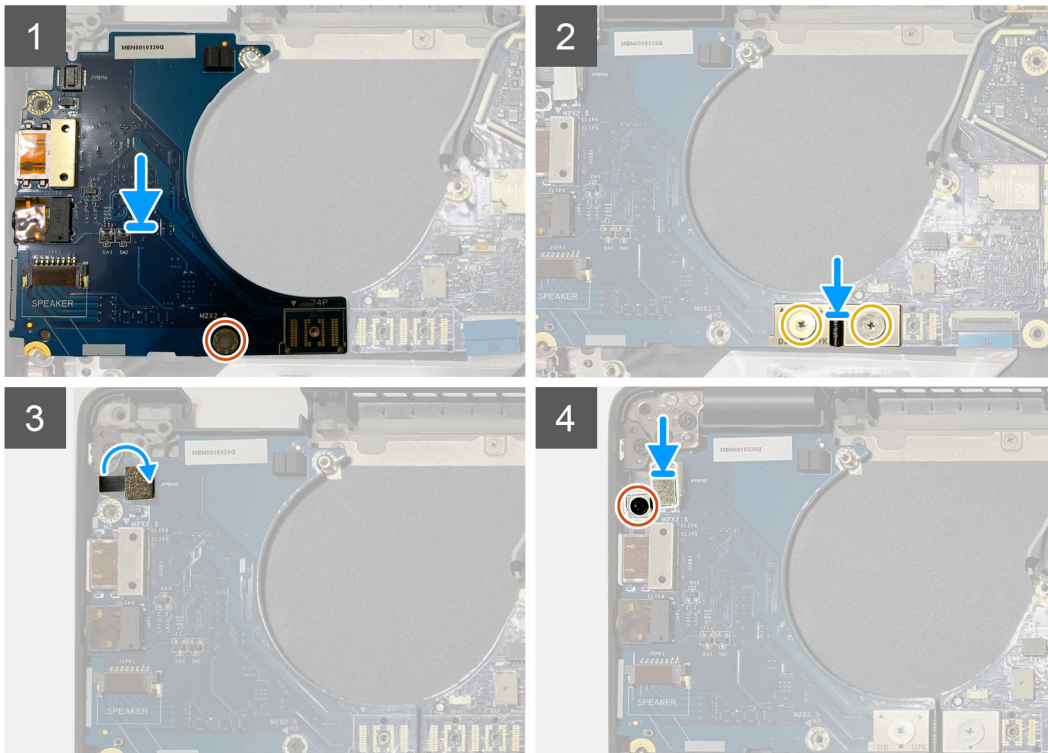
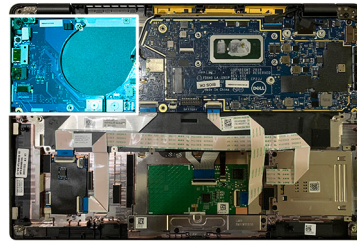
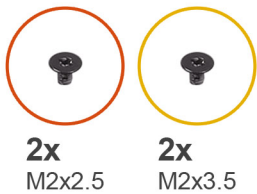
## Installing the I/O board

### Prerequisites

If you are replacing a component, remove the existing component before performing the installation procedure.

### About this task

The following images indicate the location of the I/O board and provide a visual representation of the installation procedure.



### Steps

1. Align the screw hole with that on the palmrest assembly and replace the I/O daughterboard into its slot on the palmrest assembly.
2. Connect the F-beam FPC connector to the I/O board and secure it using the two M2x3.5 screws.
3. Connect the power button cable to the I/O daughterboard.
4. Replace the two M2x2.5 screws securing the power button to the I/O board.

**NOTE:** System configurations ordered with finger print reader there are two screws securing the finger print reader bracket to the palmrest assembly.

### Next steps

1. Install the:
  - a. [Battery](#)
  - b. [WLAN antennae bracket](#)
  - c. [WWAN card](#)
  - d. [SSD thermal shield](#)
  - e. [Base cover](#)
2. Follow the procedure in [After working inside your computer](#).

## Power button with fingerprint reader

### Removing the power button with fingerprint reader

#### Prerequisites

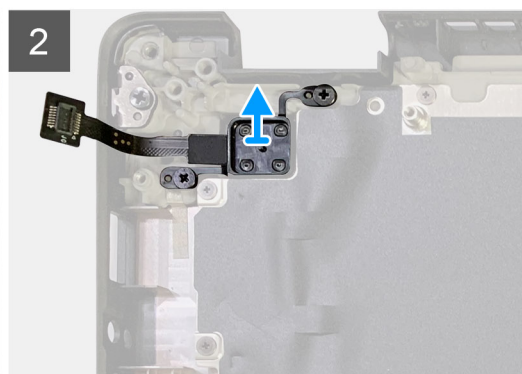
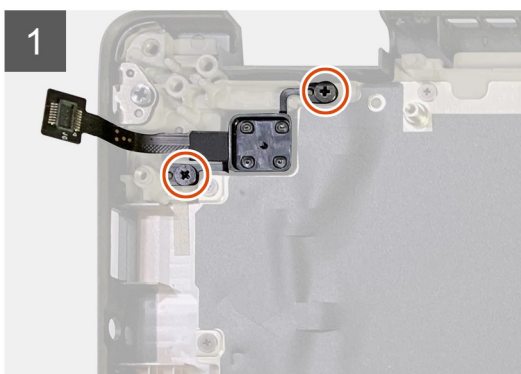
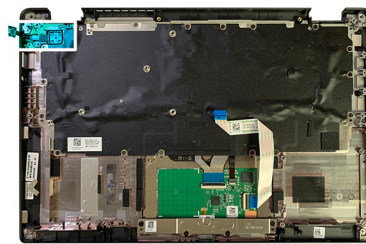
1. Follow the procedure in [Before working inside your computer](#).
2. Remove the:
  - a. [Base cover](#)
  - b. [Battery](#)
  - c. [WWAN](#)
  - d. [SSD thermal shield](#)
  - e. [WLAN antennae bracket](#)
  - f. [I/O board](#)

#### About this task

The following images indicate the location of the power button with fingerprint reader and provide a visual representation of the removal procedure.



**2x**  
M2x2.5



#### Steps

1. Remove the two M2x2.5 screws securing the power button with fingerprint reader to the palmrest assembly.

2. Remove the power button with fingerprint reader from its slot in the palmrest assembly.

## Installing the power button with fingerprint reader

### Prerequisites

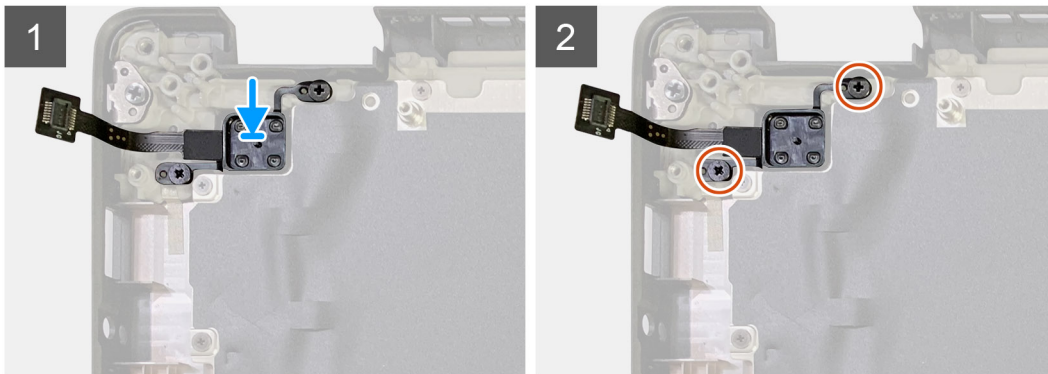
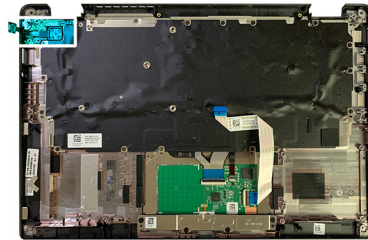
If you are replacing a component, remove the existing component before performing the installation procedure.

### About this task

The following images indicate the location of the power button with fingerprint reader and provide a visual representation of the installation procedure.



**2x**  
M2x2.5



### Steps

1. Replace the power button with fingerprint reader into its slot in the palmrest assembly.
2. Replace the two M2x2.5 screws securing power button with fingerprint reader to the palmrest assembly.

### Next steps

1. Install the:
  - a. [I/O board](#)
  - b. [WLAN antennae bracket](#)
  - c. [WWAN card](#)
  - d. [SSD thermal shield](#)
  - e. [Battery](#)
  - f. [Base cover](#)
2. Follow the procedure in [After working inside your computer](#).

## System board

### Removing the system board

#### Prerequisites

1. Follow the procedure in [Before working inside your computer](#).

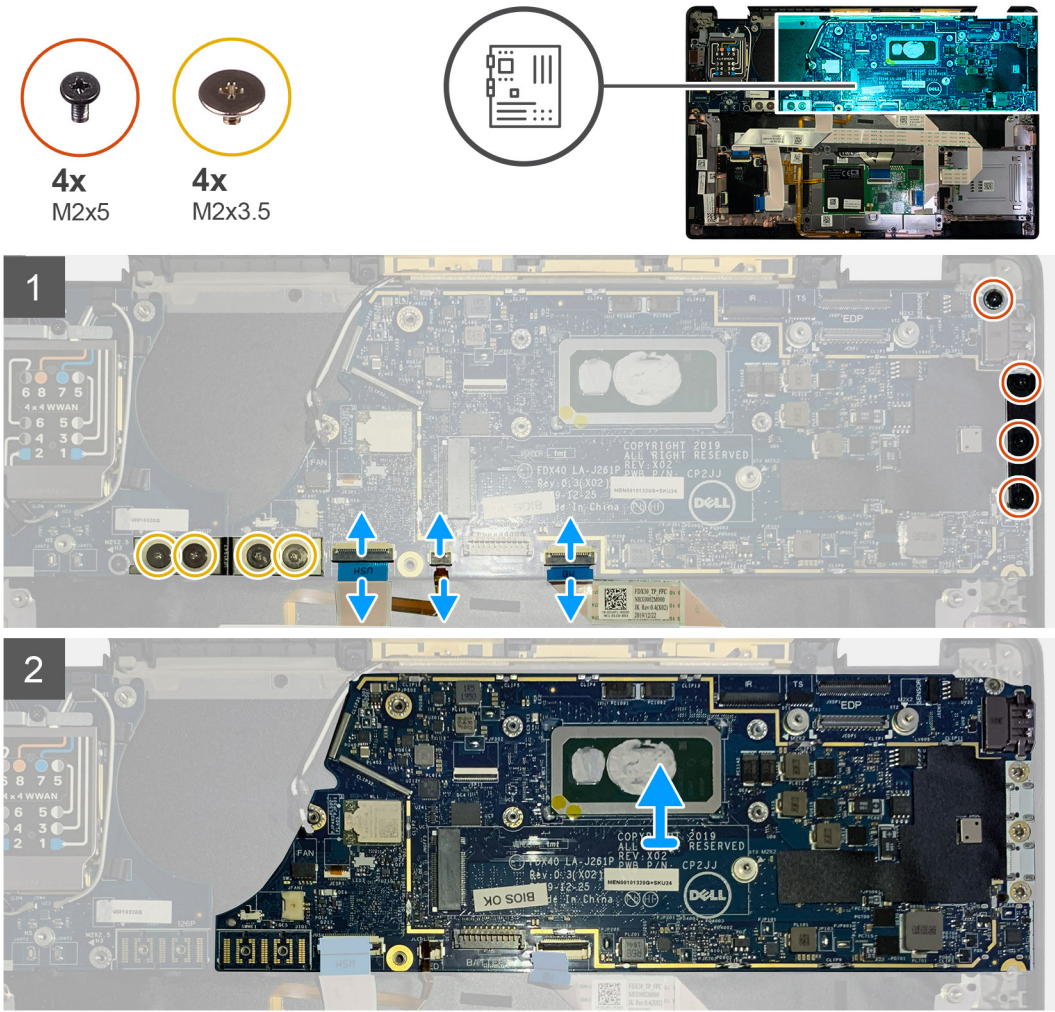


2. Remove the:
  - a. Base cover
  - b. Battery
  - c. Solid state drive
  - d. WLAN antennae bracket
  - e. Heatsink assembly

**NOTE:** System board can be disassembled without having to remove the heatsink assembly.

**About this task**

The following images indicate the location of the system board and provide a visual representation of the removal procedure.



**Steps**

1. Remove the four M2x3.5 screws securing the F-beam FPC and remove it from the I/O board.
2. Un-thread the wireless antennae cables.
3. Remove the two M2x2 screws securing the eDP bracket and remove it from the system board.
4. Disconnect the following cables from the system board :
  - IR camera cable (for systems shipped with IR camera)
  - Touchscreen cable (for systems shipped with touchscreen)
  - Display cable
  - Sensor daughterboard cable
  - Touchpad FFC
  - Battery LED FPC



- USH daughterboard FFC
- Remove the three M2x5 screws securing the Type-C USB bracket to the system board.
  - Remove the USB Type-C bracket from the system board.
  - Remove the single M2x2.5 screw securing the system board to the palmrest assembly.
  - Remove the system board from the system.

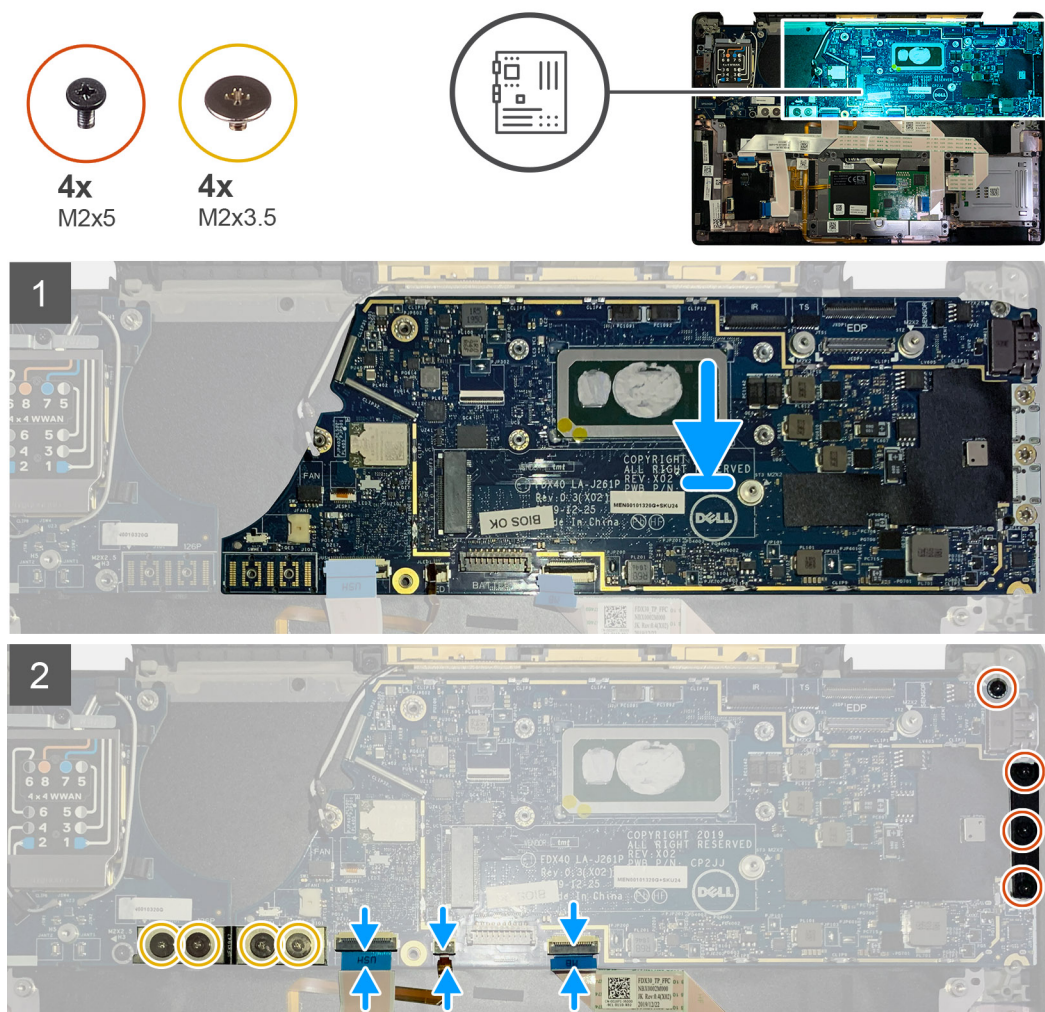
## Installing the system board

### Prerequisites

If you are replacing a component, remove the existing component before performing the installation procedure.

### About this task

The following images indicate the location of the system board and provide a visual representation of the installation procedure.



### Steps

- Align and replace the system board into the palmrest assembly.
- Replace the single M2x2.5 screw securing the system board to the palmrest assembly.
- Replace the USB Type-C bracket on the system board and secure it using the three M2x5 screws.
- Connect the following cables:
  - IR camera cable (for systems shipped with IR camera)
  - Touchscreen cable (for systems shipped with touchscreen)

- Display cable
  - Sensor daughterboard cable
  - Touchpad FFC
  - Battery LED FPC
  - USH daughterboard FFC
5. Replace the eDP bracket on the display cable connector of the system board and replace the two M2x2 screws securing it to the system board.
  6. Re-route the antennae cable on the system board.
  7. Replace the four M2x3.5 screws securing the F-beam FPC to the I/O board.

### Next steps

If you are replacing a component, remove the existing component before performing the installation procedure.

1. Install the:
  - a. [Heatsink assembly](#)
  - b. [WLAN antennae bracket](#)
  - c. [Solid state drive](#)
  - d. [Battery](#)
  - e. [Base cover](#)
2. Follow the procedure in [After working inside your computer](#).

## Keyboard

### Removing the keyboard

#### Prerequisites

1. Follow the procedure in [Before working inside your computer](#).
2. Remove the:
  - a. [Base cover](#)
  - b. [Battery](#)
  - c. [WLAN antennae bracket](#)
  - d. [Heatsink assembly](#)
  - e. [I/O Board](#)
  - f. [System board](#)

 **NOTE: System board can be disassembled without having to remove the heatsink assembly.**

3. Loosen and remove the single M2x2 screw on the [SSD thermal shield](#) and remove the [system board shield](#).

#### About this task

The following images indicate the location of the keyboard and provide a visual representation of the removal procedure.





## Steps

1. Remove all the M1.6x2 screws securing the keyboard to the palmrest assembly.

**Depending on the configuration the number of screws vary :**

- Aluminum palmrest: 26
- Carbon Fiber palmrest: 19

2. Disconnect the keyboard and backlight cable from the touchpad module.
3. Remove the two M2x2 screws securing the keyboard to the keyboard plate.

 **NOTE:** Screws are located below Colon & Semi-colon key and between Capslock, A and Shift keys.

## Installing the keyboard

### Prerequisites

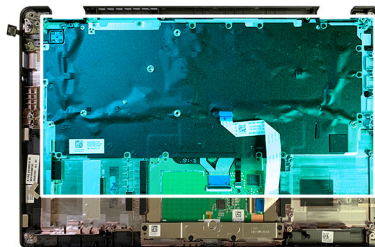
If you are replacing a component, remove the existing component before performing the installation procedure.

### About this task

The following images indicate the location of the keyboard and provide a visual representation of the installation procedure.



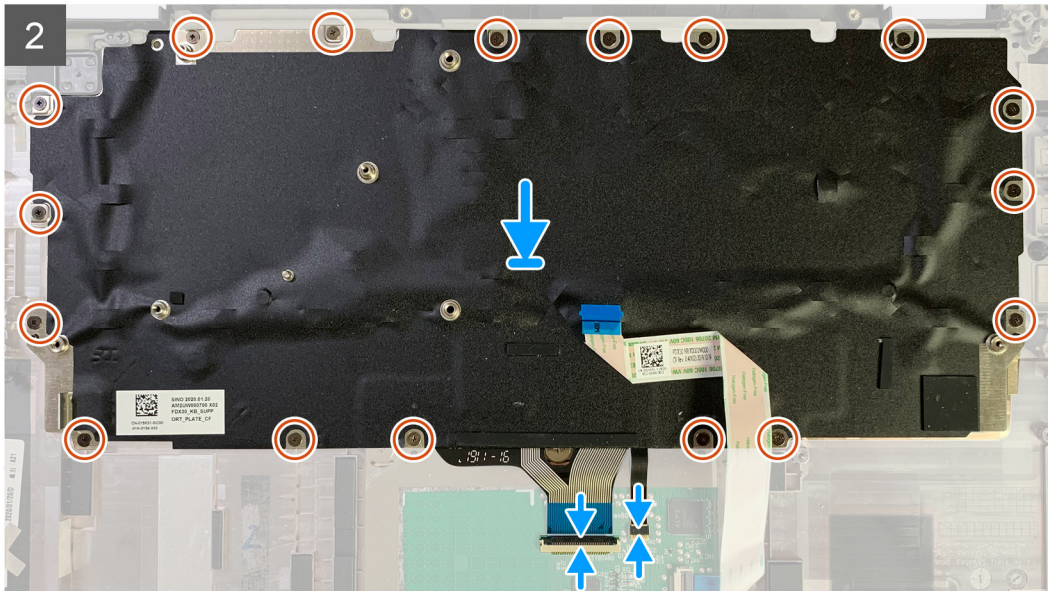
**2x**  
M2X2







**17x**  
M2X2.5



### Steps

1. Align the screw holes on the keyboard support bracket with that on the keyboard and replace the two M2x2 screws.
2. Align the and place the keyboard into its slot in the palmrest assembly.
3. Replace all the M1.6x2 screws securing the keyboard to the palmrest assembly.

#### Depending on the configuration the number of screws vary :

- Aluminum palmrest: 26
- Carbon Fiber palmrest: 19

### Next steps

If you are replacing a component, remove the existing component before performing the installation procedure.

1. Install the:
  - a. [System board](#)
  - b. [I/O board](#)
  - c. [Heatsink assembly](#)
  - d. [WLAN antennae bracket](#)
  - e. [Battery](#)
  - f. [Base cover](#)
2. Follow the procedure in [After working inside your computer](#).

# Palmrest assembly

## Removing the palmrest assembly

### Prerequisites

1. Follow the procedure in [Before working inside your computer](#).
2. Remove the:

- a. [Base cover](#)
- b. [Battery](#)
- c. [Solid state drive](#)
- d. [WWAN card](#)
- e. [WLAN antenna bracket](#)
- f. [Palmrest antenna \(optional\)](#)
- g. [Heatsink assembly](#)
- h. [Display assembly](#)
- i. [Speakers](#)
- j. [Smart card reader](#)
- k. [I/O Board](#)
- l. [Power button with fingerprint reader](#)
- m. [System board](#)

 **NOTE: System board can be disassembled without having to remove the heatsink assembly.**

- n. [Keyboard](#)

### About this task

The following images indicate the location of the palmrest assembly and provide a visual representation of the removal procedure.

### Steps

Once all the underlying components are removed, you are left with the palmrest assembly.

## Installing the palmrest assembly

### Prerequisites

If you are replacing a component, remove the existing component before performing the installation procedure.

### About this task

The following images indicate the location of the palmrest assembly and provide a visual representation of the installation procedure.



## Steps

1. Place the palmrest assembly on a flat surface.
2. Transfer over the components to the new palmrest assembly.

## Next steps

If you are replacing a component, remove the existing component before performing the installation procedure.

1. Install the:
  - a. [Keyboard](#)
  - b. [System board](#)
  - c. [Power button with finger print reader](#)
  - d. [I/O board](#)
  - e. [Smart card reader](#)
  - f. [Speakers](#)
  - g. [Display assembly](#)
  - h. [Heatsink assembly](#)
  - i. [Palmrest antenna \(optional\)](#)
  - j. [WLAN antenna bracket](#)
  - k. [WWAN card](#)
  - l. [Solid state drive](#)
  - m. [Battery](#)
  - n. [Base cover](#)
2. Follow the procedure in [After working inside your computer](#).

# Troubleshooting

## Recovering the operating system

When your computer is unable to boot to the operating system even after repeated attempts, it automatically starts Dell SupportAssist OS Recovery.

Dell SupportAssist OS Recovery is a standalone tool that is preinstalled in all Dell computers installed with Windows 10 operating system. It consists of tools to diagnose and troubleshoot issues that may occur before your computer boots to the operating system. It enables you to diagnose hardware issues, repair your computer, back up your files, or restore your computer to its factory state.

You can also download it from the Dell Support website to troubleshoot and fix your computer when it fails to boot into their primary operating system due to software or hardware failures.

For more information about the Dell SupportAssist OS Recovery, see *Dell SupportAssist OS Recovery User's Guide* at [www.dell.com/support](http://www.dell.com/support).

## Dell SupportAssist Pre-boot System Performance Check diagnostics

### About this task

The SupportAssist diagnostics (also known as system diagnostics) performs a complete check of your hardware. The Dell SupportAssist Pre-boot System Performance Check diagnostics is embedded with the BIOS and is launched by the BIOS internally. The embedded system diagnostics provides a set of options for particular devices or device groups allowing you to:

- Run tests automatically or in an interactive mode
- Repeat tests
- Display or save test results
- Run thorough tests to introduce additional test options to provide extra information about the failed device(s)
- View status messages that inform you if tests are completed successfully
- View error messages that inform you of problems encountered during testing

**NOTE:** Some tests for specific devices require user interaction. Always ensure that you are present at the computer terminal when the diagnostic tests are performed.

For more information, see [Resolve Hardware Issues With Built-in and Online Diagnostics \(SupportAssist ePSA, ePSA or PSA Error Codes\)](#).

## Running the SupportAssist Pre-Boot System Performance Check

### Steps

1. Turn on your computer.
2. As the computer boots, press the F12 key as the Dell logo appears.
3. On the boot menu screen, select the **Diagnostics** option.
4. Click the arrow at the bottom left corner.  
Diagnostics front page is displayed.
5. Click the arrow in the lower-right corner to go to the page listing.  
The items detected are listed.
6. To run a diagnostic test on a specific device, press Esc and click **Yes** to stop the diagnostic test.



7. Select the device from the left pane and click **Run Tests**.
8. If there are any issues, error codes are displayed.  
Note the error code and validation number and contact Dell.

## Validation Tools

This section contains information on how to validate the SupportAssist ePSA, ePSA or PSA error codes.

Error code verification can be done using below two methods :

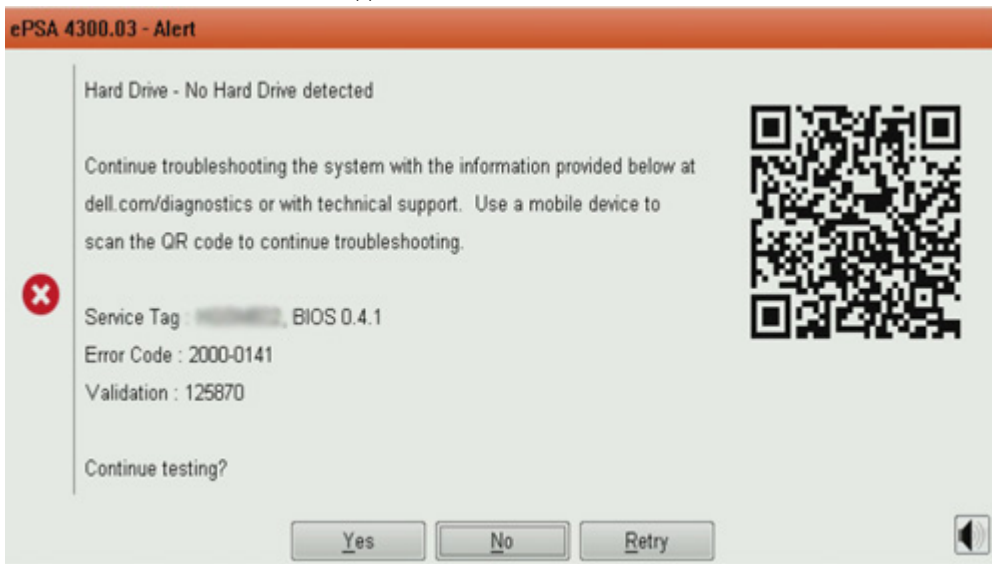
- [Online Enhanced Preboot System Assessment Validation Tool](#).
- QR scanning using QR APP on Smart Phone.

## Online SupportAssist On-board Diagnostics, ePSA or PSA Error Codes Validation Tool

### Usage Guide

#### Steps


1. User to obtain information from SupportAssist error windows.



2. Navigate to <https://www.dell.com/support/diagnose/Pre-boot-Analysis>.
3. Enter error code, validation code, and service tag. Part serial number is optional.

Error Code (without 2000-prefix) \*

Validation Code \*

Service Tag  \*

Part Serial # (optional)


[View System Requirements and Privacy And Legal Information](#)

 **NOTE:** For error code, use only the last 3 or 4 digits of the code. (user can enter 0142 or 142 instead of 2000-0142.)

- Click on **Submit** once all the necessary information is entered.

Error Code (without 2000-prefix) \*

Validation Code \*

Service Tag  \*

Part Serial # (optional)

[View System Requirements and Privacy And Legal Information](#)

## Results

### Valid Error Code Example

Vostro 20 All-in-One 3055  
 Service Tag: **XXXXXXXXXX** | Express Service Code: **XXXXXXXXXX**  
 Add to My Products List  
 View a different product

Manuals Warranty System configuration

**Diagnostics**

- Support topics & articles
- Drivers & downloads
- General maintenance
- Parts & accessories

**Warning:** Your system is currently Out of Warranty. Please contact Dell Technical Support for further assistance.

**Result: Issues Found.**

Your result requires attention. Review the affected hardware below and follow the instructions to troubleshoot problems or you may be presented with a request to replace parts.

[Clear results](#)

**Needs Attention: System maintenance**

**Needs Attention**  
 A potential error has been found. [Click here](#) to view a list of steps that can help resolve your issue.

[See full scan results.](#)

**Diagnostics Completed**

Hardware			
Diagnostic Name	Error Code	Serial #	Result
EP5A	141		<span style="color: red;">●</span> Failed

After entering the correct information, the online tools will direct the user to the above screen which contains information on :

- Confirmation of the error code and result outcome
- Suggested Part Replacement
- If customer is still covered under Dell Warranty
- Case reference number if there is an open case under the service tag

**Invalid Error Code Example**

Error Code (without 2000-prefix) \*

0141

Validation Code \*

123456

Service Tag  \*

W9298032

Part Serial # (optional)

Part Serial # (optional)



You have entered an invalid ePSA request, please check your details and try again.

Submit

## QR APP Validation Tool

### About this task

Besides using the online tool, customers can also validate the error code by scanning the QR code with a QR APP on a smartphone.

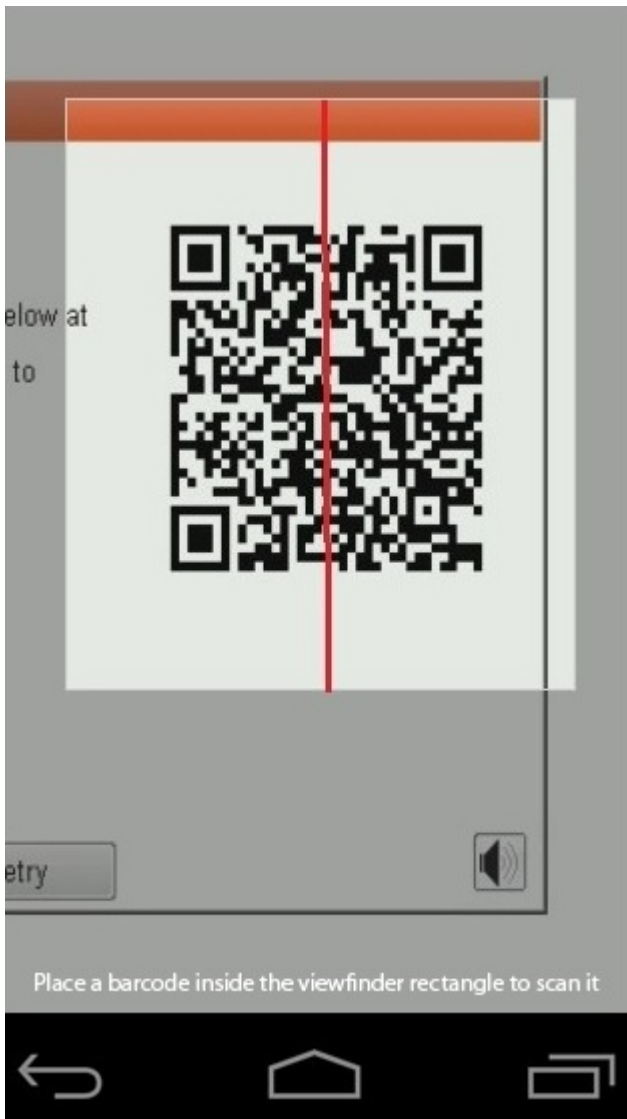
### Steps

1. User to obtain the QR code from SupportAssist On-board Diagnostics error screen.

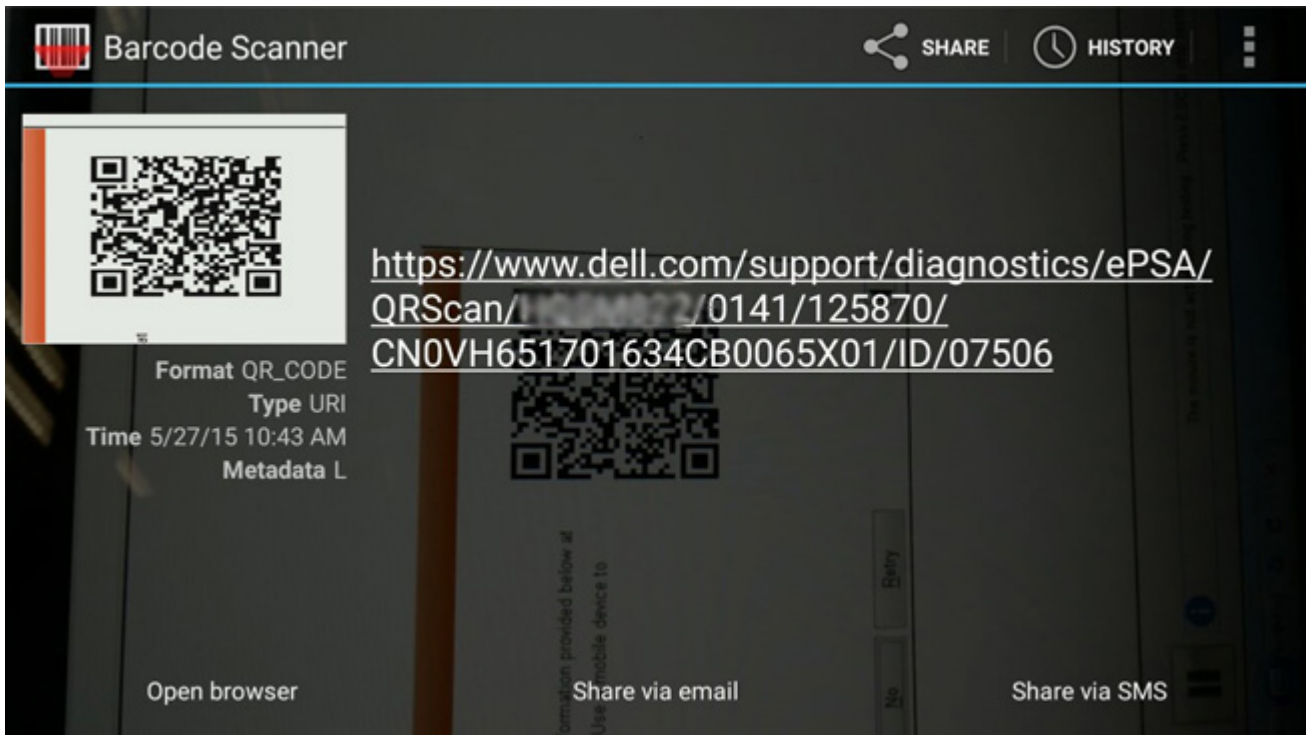


2. User can use any QR code scanner application through the smartphone to scan the QR code.





3. The QR code scanner application will scan the code and automatically generate a link. Click the link to proceed.



## Results

The link generated will take the customer to the Dell Support website which contains information on:

- Confirmation of the error code and result outcome
- Suggested Part Replacement
- If customer is still covered under Dell Warranty
- Case reference number if there is an open case under the service tag

Vostro 20 All-in-One 3055  
Service Tag: [XXXXXXXXXX](#) | Express Service Code: [XXXXXXXXXX](#)  
Add to My Products List  
[View a different product](#)

Manuals Warranty System configuration

**Diagnostics**

- Support topics & articles
- Drivers & downloads
- General maintenance
- Parts & accessories

**Warning:** Your system is currently Out of Warranty. Please contact Dell Technical Support for further assistance.

**Result: Issues Found.**

Your result requires attention. Review the affected hardware below and follow the instructions to troubleshoot problems or you may be presented with a request to replace parts.

[Clear results](#)

**Needs Attention: System maintenance**

**Needs Attention**  
A potential error has been found. [Click here](#) to view a list of steps that can help resolve your issue.

[See full scan results.](#)

**Diagnostics Completed**

Hardware			
Diagnostic Name	Error Code	Serial #	Result
EP5A	141		Failed

## System diagnostic lights

### Battery-status light

Indicates the power and battery-charge status.

**Solid white** — Power adapter is connected and the battery has more than 5 percent charge.

**Amber** — Computer is running on battery and the battery has less than 5 percent charge.

### Off

- Power adapter is connected and the battery is fully charged.
- Computer is running on battery and the battery has more than 5 percent charge.
- Computer is in sleep state, hibernation, or turned off.

The power and battery-status light blinks amber along with beep codes indicating failures.

For example, the power and battery-status light blinks amber two times followed by a pause, and then blinks white three times followed by a pause. This 2,3 pattern continues until the computer is turned off indicating no memory or RAM is detected.

The following table shows different power and battery-status light patterns and associated problems.

**Table 4. LED codes**

Diagnostic light codes	Problem description	Recommended solution
1,1	TPM detection failure	Replace system board
1,2	SPI flash failure: replace system board	Replace system board
1,5	i-Fuse failure	Replace system board

Diagnostic light codes	Problem description	Recommended solution
1,6	Embedded controller failure	Disconnect all power source (AC, battery, coin cell) and drain flea power by pressing & holding down power button.
2,1	CPU failure	Run the Intel CPU diagnostics tools, if the problem still persists, replace the system board.
2,2	System board: BIOS or ROM (Read-Only Memory) failure	Flash latest BIOS version, If problem persists, replace the system board
2,3	No memory or RAM (Random-Access Memory) detected	Confirm that the memory module is installed properly If problem persists, replace the memory module
2,4	Memory or RAM (Random-Access Memory) failure	Reset the memory module If problem persists, replace the memory module
2,5	Invalid memory installed	Reset the memory module, If problem persists, replace the memory module
2,6	System-board or chipset error	Flash latest BIOS version If problem persists, replace the system board
2,7	Display failure	Flash latest BIOS version If problem persists, replace the LCD module
2,8	LCD power rail failure. Replace system board	Replace the system board
3,1	Coin-cell battery failure	Reset the CMOS battery connection If problem persists, replace the RTC battery
3,2	PCI, video card/chip failure	Replace the system board
3,3	Recovery image not found	Flash latest BIOS version If problem persists, replace the system board
3,4	Recovery image found but invalid	Flash latest BIOS version If problem persists, replace the system board
3,5	Power-rail failure	Replace the system board
3,6	System BIOS Flash incomplete	Replace the system board
3,7	Management Engine (ME) error	Replace the system board

**Camera status light:** Indicates whether the camera is in use.

- Solid white — Camera is in use.
- Off — Camera is not in use.

**Caps Lock status light:** Indicates whether Caps Lock is enabled or disabled.

- Solid white — Caps Lock enabled.
- Off — Caps Lock disabled.

## Flashing BIOS (USB key)

### Steps

1. Follow the procedure from step 1 to step 7 in "[Flashing the BIOS](#)" to download the latest BIOS setup program file.
2. Create a bootable USB drive. For more information see the knowledge base article [SLN143196](#) at [www.dell.com/support](http://www.dell.com/support).
3. Copy the BIOS setup program file to the bootable USB drive.
4. Connect the bootable USB drive to the computer that needs the BIOS update.
5. Restart the computer and press **F12** when the Dell logo is displayed on the screen.
6. Boot to the USB drive from the **One Time Boot Menu**.
7. Type the BIOS setup program filename and press **Enter**.
8. The **BIOS Update Utility** appears. Follow the instructions on the screen to complete the BIOS update.



# Flashing the BIOS

## About this task

You may need to flash (update) the BIOS when an update is available or when you replace the system board.

Follow these steps to flash the BIOS:

## Steps

1. Turn on your computer.
2. Go to [www.dell.com/support](http://www.dell.com/support).
3. Click **Product support**, enter the Service Tag of your computer, and then click **Submit**.

 **NOTE: If you do not have the Service Tag, use the auto-detect feature or manually browse for your computer model.**

4. Click **Drivers & downloads > Find it myself**.
5. Select the operating system installed on your computer.
6. Scroll down the page and expand **BIOS**.
7. Click **Download** to download the latest version of the BIOS for your computer.
8. After the download is complete, navigate to the folder where you saved the BIOS update file.
9. Double-click the BIOS update file icon and follow the instructions on the screen.

# Backup media and recovery options

It is recommended to create a recovery drive to troubleshoot and fix problems that may occur with Windows. Dell proposes multiple options for recovering Windows operating system on your Dell PC. For more information, see [Dell Windows Backup Media and Recovery Options](#).

# WiFi power cycle

## About this task

If your computer is unable to access the Internet due to WiFi connectivity issues, a WiFi power cycle procedure may be performed. The following procedure provides the instructions on how to conduct a WiFi power cycle:

 **NOTE: Some ISPs (Internet Service Providers) provide a modem/router combo device.**

## Steps

1. Turn off your computer.
2. Turn off the modem.
3. Turn off the wireless router.
4. Wait for 30 seconds.
5. Turn on the wireless router.
6. Turn on the modem.
7. Turn on your computer.

# LCD Built-in Self Test

## Overview : LCD Built-in Self Test (BIST)

Dell laptops have a built-in diagnostic tool that helps you determine if the screen abnormality you are experiencing is an inherent problem with the LCD (screen) of the Dell laptop or with the video card (GPU) and PC settings .

When you notice screen abnormalities like flickering, distortion, clarity issues, fuzzy or blurry image, horizontal or vertical lines, color fade etc., it is always a good practice to isolate the LCD (screen) by running the Built-In Self Test (BIST).

## How to invoke LCD BIST Test

1. Power off the Dell laptop.
2. Disconnect any peripherals connected to the laptop. Connect only the AC adapter (charger) to the laptop.
3. Make sure that the LCD (screen) is clean (no dust particles on the surface of the screen).
4. Press and hold **D** key and **Power on** the laptop to enter LCD built-in self test (BIST) mode. Continue to hold the D key, until you see color bars on the LCD (screen).
5. The screen will display multiple color bars and change colors on the entire screen to red, green, and blue.
6. Carefully inspect the screen for abnormalities.
7. Press **Esc** key to exit.

**NOTE:** Dell SupportAssist Pre-boot diagnostics upon launch, initiates a LCD BIST first, expecting an user intervention confirm functionality of the LCD.

## BIOS recovery

The BIOS recovery is designed to fix the main BIOS, and cannot work if the boot is damaged. The BIOS recovery will not work in the event of EC corruption, ME corruption, or a hardware related issue. The BIOS recovery image should be available on the unencrypted partition on the drive for BIOS recovery feature.

## Rollback BIOS feature

Two versions of the BIOS recovery image are saved on the hard drive:

- Current running BIOS (old)
- To-be-updated BIOS (new)

The old version is already stored on the hard drive. The BIOS adds new version to the hard drive, maintains the old version, and deletes other existing versions. For example, A00 and A02 versions are already on the hard drive, A02 is the running BIOS. The BIOS adds A04, maintains A02, and deletes A00. Having two BIOS version enables the Rollback BIOS feature.

If the recovery file cannot be stored (hard drive is out of space), the BIOS sets a flag to indicate this condition. The flag is reset in the event it later becomes possible to store the recovery file. The BIOS notifies the user during POST and in BIOS Setup, the BIOS recovery is degraded. BIOS recovery through hard drive may not be possible, however BIOS recovery through USB flash drive is still possible.

For USB key: root directory or "\"

BIOS\_IMG.rcv: the recovery image stored on the USB key.

## BIOS recovery using hard drive

### About this task

**NOTE:** Ensure that you have the previous version and the latest version of the BIOS from the Dell support site available to use.

**NOTE:** Ensure that you have the file type extensions visible in the operating system (OS).

### Steps

1. Browse to the location of the BIOS update executable (.exe) files.
2. Rename the BIOS executable files to **BIOS\_PRE.rcv** for the earlier version of the BIOS and **BIOS\_CUR.rcv** for the latest version of the BIOS.  
For example, if the latest version's file name is **PowerEdge\_T30\_1.0.0.exe**, rename it to **BIOS\_CUR.rcv** and if the previous version's file name is **PowerEdge\_T30\_0.0.9.exe**, rename it to **BIOS\_PRE.rcv**
  - NOTE:**
    - a. If the hard drive is new, there will be no operating system installed.
    - b. If the hard drive has been partitioned at the Dell factory, there will be a Recovery Partition available.
3. Disconnect the hard drive and install the hard drive into another system that has a full operational operating system.

4. Start up the system and in the Windows operating system environment follow these steps to copy the BIOS recovery file to the **Recovery Partition**.
  - a) Open a Windows Command Prompt window.
  - b) At the prompt, type **diskpart** to start the **Microsoft DiskPart**.
  - c) At the prompt, type **list disk** to list out the available hard drives. Select the hard drive that was installed in Step 3.
  - d) At the prompt, type **list partition** to view the available partitions on this hard drive.
  - e) Select **Partition 1** which is the **Recovery Partition**. The size of the partition will be 39 MB.
  - f) At the prompt, type **set id=07** to set the partition ID.
 

**NOTE:** The partition will be visible to the operating system as **Local Disk (E)** to read and write data.
  - g) Create the following folders in **Local Disk (E)**, **E:\EFI\Del\BIOS\Recovery**.
  - h) Copy both the BIOS files **BIOS\_CUR.rcv** and **BIOS\_PRE.rcv** to the recovery folder on **Local Disk (E)**.
  - i) In the **Command Prompt** window, at the **DISKPART** prompt, type **set id=DE**.
 

After the executing this command, the partition **Local Disk (E)** will not be accessible by the OS.
5. Shut the system down, remove the hard drive, and install the hard drive into the original system.
6. Start the system up and boot to System Setup, in the **Maintenance** section ensure that **BIOS Recovery from Hard Drive** is enabled in the **BIOS Recovery** section of the setup.
7. Press the power button to shut the system down.
8. Holding the **Ctrl and Esc** keys, press the power button to start the system up. Keep holding the **Ctrl and Esc** keys until the **BIOS Recovery Menu** page is displayed.
 

Ensure that the **Recover BIOS** radio button is selected and click **Continue** to start the BIOS recovery.

## BIOS recovery using USB drive

### About this task

- NOTE:** Ensure that you have the file type extensions visible in the operating system.
- NOTE:** Ensure that you have downloaded the latest BIOS from the Dell support site and save it on your system.

### Steps

1. Browse to the location of the downloaded BIOS update executable (.exe) file.
2. Rename the file to BIOS\_IMG.rcv.  
For example, if the file name is PowerEdge\_T30\_0.0.5.exe, rename it to BIOS\_IMG.rcv
3. Copy the BIOS\_IMG.rcv file to the root directory of the USB key.
4. If not plugged in, plug in the USB drive, restart the system, press F2 to enter the System Setup, and then press power button to shut down the system.
5. Start the system.
6. While the system is starting up, press the **Ctrl+Esc** keys while holding the power button until the **BIOS Recovery Menu** dialog box is displayed.
7. Click **Continue** to start the BIOS recovery process.
 

**NOTE:** Ensure that the **Recovery BIOS** option is selected in the **BIOS Recovery Menu** dialog box.
8. Select the path on the USB drive where BIOS recovery file is stored( root directory or "\") and follow the on-screen instructions.

## M-BIST

M-BIST (Built In Self-Test) diagnostics tool, featuring improved accuracy in system board failures.

- NOTE:** M-BIST can be manually initiated before POST (Power On Self Test).

# How to run M-BIST

**i** **NOTE:** M-BIST must be initiated on the system from a power-off state either connected to AC power or with battery only.

1. Press and hold both the **M** key on the keyboard and the **power button** to initiate M-BIST.
2. With both the **M** key and the **power button** held down, the battery indicator LED may exhibit two states:
  - a. OFF: No fault detected with the system board
  - b. AMBER: Indicates a problem with the system board

# RTC reset and Flea power release

## About this task

Flea power is the residual static electricity that remains on the computer even after it has been powered off and the battery has been disconnected from the system board. The following procedure provides the instructions on how to release the flea power:

## Steps

1. Turn off your computer.
2. Remove the [base cover](#).

**i** **NOTE:** The battery must be disconnected from the system board, see **Step 2** in [Removing the SSD](#).

3. Press and hold the power button for 15 seconds to drain the flea power.
4. Install the [base cover](#).
5. Turn on your computer.

**i** **NOTE:** Performing a flea power also reset the RTC of the system. Update the system time and date at first startup.





# Getting help and contacting Dell

## Self-help resources



You can get information and help on Dell products and services using these self-help resources:

**Table 5. Self-help resources**

Self-help resources	Resource location
Information about Dell products and services	<a href="https://www.dell.com/">https://www.dell.com/</a>
Dell Support	
Tips	
Contact Support	In Windows search, type <code>Contact Support</code> , and press Enter.
Online help for operating system	<ul style="list-style-type: none"> <li>Windows: <a href="https://www.dell.com/support/windows">https://www.dell.com/support/windows</a></li> <li>Linux: <a href="https://www.dell.com/support/linux">https://www.dell.com/support/linux</a></li> </ul>
Troubleshooting information, user manuals, set up instructions, product specifications, technical help blogs, drivers, software updates, and so on.	<a href="https://www.dell.com/support/home/">https://www.dell.com/support/home/</a>
Dell knowledge base articles for various of system concerns:	<ol style="list-style-type: none"> <li>Go to <a href="https://www.dell.com/support/home/?app=knowledgebase">https://www.dell.com/support/home/?app=knowledgebase</a>.</li> <li>Type the subject or keyword in the <b>Search</b> box.</li> <li>Click <b>Search</b> to retrieve the related articles.</li> </ol>
Learn and get more information about your product:	Dell provides several online and telephone-based support and service options. If you do not have an active Internet connection, you can find contact information about your purchase invoice, packing slip, bill, or Dell product catalog.
<ul style="list-style-type: none"> <li>Product specifications</li> <li>Operating system</li> <li>Setting up and using your product</li> <li>Data backup</li> <li>Troubleshooting and diagnostics</li> <li>Factory and system restore</li> <li>BIOS information</li> </ul>	<ul style="list-style-type: none"> <li>Select <b>Detect Product</b>.</li> <li>Locate your product through the drop-down menu under <b>View Products</b>.</li> <li>Enter the <b>Service Tag number</b> or <b>Product ID</b> in the search bar.</li> <li>Once on product support page, scroll down to Manuals and Documents section to preview all the Manuals, documents, and other information for your product.</li> </ul>

# Contacting Dell

Dell provides several online and telephone-based support and service options. If you do not have an active Internet connection, you can find contact information about your purchase invoice, packing slip, bill, or Dell product catalog. Availability varies by country/region and product, and some services may not be available in your area. To contact Dell for sales, technical support, or customer service issues:

1. Go to <https://www.dell.com/support/>.
2. Select your country/region from the drop-down menu on the lower right corner of the page.
3. For **customized support**:
  - a. Enter your system Service Tag in the **Enter your Service Tag** field.
  - b. Click **submit**.
    - The support page that lists the various support categories is displayed.
4. For **general support**:
  - a. Select your product category.
  - b. Select your product segment.
  - c. Select your product.
    - The support page that lists the various support categories is displayed.
5. For contact details of Dell Global Technical Support, see <https://www.dell.com/contactdell>.
  -  **NOTE: The Contact Technical Support page is displayed with details to call, chat, or email the Dell Global Technical Support team.**
  -  **NOTE: Availability varies by country/region and product, and some services may not be available in your area.**