

Philips
LCD monitor with
SmoothTouch

B Line

22 (21.5"/54.6 cm diag.)
1920 x 1080 (Full HD)

222B9TN



Brilliant interactive display with SmoothTouch

A sturdy water- and dust-resistant touch-screen monitor for flexible use anywhere. Offering simple and intuitive use across applications, greatly boosts productivity.

Brilliant interactive display

- SmoothTouch display for natural, fluid touch response
- Stylus for fluid and accurate performance with more control
- Monitor front surface meets IP65 for water and dust resistance
- 16:9 Full HD display for crisp, detailed images
- SmartContrast for rich black details
- LowBlue Mode for easy-on-the-eyes productivity
- Less eye fatigue with Flicker-Free technology
- EasyRead mode for a paper-like reading experience

Easy to experience

- HDMI ensures universal digital connectivity
- USB 3.1 high-speed data transfer
- DisplayPort connection for maximum visuals
- VESA mount allows for flexibility

PHILIPS

LCD monitor with SmoothTouch
B Line 22 (21.5"/54.6 cm diag.), 1920 x 1080 (Full HD)

222B9TN/00

Highlights

SmoothTouch



This Philips display uses Projected capacitive 10-point touch technology for fluid response. You can fully utilise the new capabilities of touch-based applications and bring your older applications to life. Touch-type with 10 fingers or play exciting interactive games with your friends. Collaborate with colleagues interactively at work or school environment and increase your productivity and efficiency.

Water- and dust-resistant



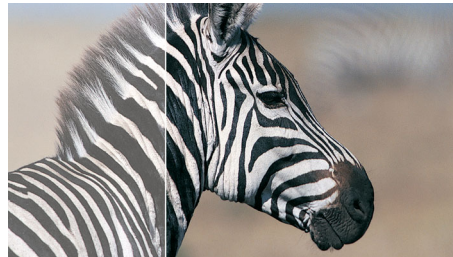
For less-than-perfect environments, you need a monitor that's designed to hold up to the splashes of water and dust that happen in the everyday world. Ingress Protection (IP) ratings defined in international standard IEC/EN 60529, are used to define levels of sealing effectiveness of electrical enclosures against intrusion from foreign bodies and moisture. This Philips display meets the international IP rating for water and dust resistance. It will hold up to the water splashes and dust that happen in the everyday world.

16:9 Full HD display



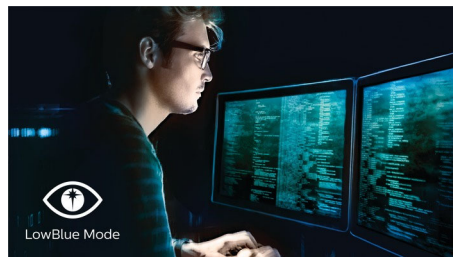
Picture quality matters. Regular displays deliver quality, but you expect more. This display features enhanced Full HD 1920 x 1080 resolution. With Full HD for crisp detail paired with high brightness, incredible contrast and realistic colours, expect a true-to-life picture.

SmartContrast



SmartContrast is a Philips technology that analyses the contents you are displaying, automatically adjusting colours and controlling backlight intensity to dynamically enhance contrast for the best digital images and videos or when playing games where dark hues are displayed. When Economy mode is selected, contrast is adjusted and backlighting fine-tuned for just-right display of everyday office applications and lower power consumption.

LowBlue Mode



Studies have shown that just as ultra-violet rays can cause eye damage, shortwave-length blue light rays from LED displays can cause eye

damage and affect vision over time. Developed for wellbeing, the Philips LowBlue Mode setting uses a smart software technology to reduce harmful shortwave blue light.

Flicker-Free technology



Due to the way brightness is controlled on LED-backlit screens, some users experience flicker on their screen which causes eye fatigue. Philips Flicker-Free technology applies a new solution to regulate brightness and reduce flicker for more comfortable viewing.

EasyRead mode



EasyRead mode for a paper-like reading experience

HDMI Ready



HDMI-ready

An HDMI-ready device has all the required hardware to accept High-Definition Multimedia Interface (HDMI) input. An HDMI cable enables high-quality digital video and audio to be transmitted over a single cable from a PC or any number of AV sources (including set-top boxes, DVD players, A/V receivers and video cameras).



SmoothTouch



Water and Dust Resistant



SmartContrast



LowBlue Mode



Flicker-free



EasyRead



HDMI



Built-in Speaker



Full HD 1080p

Specifications

Picture/Display

- LCD panel type: TFT-LCD (TN)
- Backlight type: W-LED system
- Panel Size: 21.5 inch/54.6 cm
- Effective viewing area: 476.64 (H) x 268.11 (V)
- Aspect ratio: 16:9
- Optimum resolution: 1920 x 1080 @ 60 Hz
- Pixel Density: 102 PPI
- Response time (typical): 1 ms (Grey to Grey)*
- Brightness: 250 cd/m²
- Contrast ratio (typical): 1000:1
- SmartContrast: 50,000,000:1
- Pixel pitch: 0.248 x 0.248 mm
- Viewing angle: 170° (H)/160° (V), @ C/R > 10
- Picture enhancement: SmartImage
- Colour gamut (typical): NTSC 72% (CIE 1931)
- Display colours: 16.7 M
- Scanning Frequency: 30–85 kHz (H) / 48–75 Hz (V)
- sRGB
- Flicker-free
- EasyRead
- LowBlue Mode

Touch

- Touch technology: Projected capacitive
- Touch points: 10 points
- Touch method: Stylus, Finger, Glove*
- Touch interface: USB
- Touch glass hardness: 7 H
- Touch glass coating: Glare
- Touch active area: 476.64 mm (H) x 268.11 mm (V)
- Operating system: Windows 10 / 8.1 / 8 / 7; Android 7.1 / 7.0 / 6.0 / 5.0 / 4.4; certain Linux versions*
- Palm rejection area: >= 30 x 30 mm
- Ingress protection: IP65 - front only
- Sealability: Touchscreen sealed to bezel; Touchscreen sealed to LCD

Connectivity

- Signal Input: VGA (Analogue), DVI-D (digital, HDCP), DisplayPort 1.2, HDMI 1.4
- USB: USB 3.1 x 2 (1 w/fast charging)*
- Sync Input: Separate Sync, Sync on Green
- Audio (In/Out): PC audio-in, Headphone out

Convenience

- Built-in Speakers: 2 W x 2
- User convenience: SmartImage, Input, Brightness, Menu, Power On/Off

- Control software: SmartControl
- OSD Languages: Brazil Portuguese, Czech, Dutch, English, Finnish, French, German, Greek, Hungarian, Italian, Japanese, Korean, Polish, Portuguese, Russian, Simplified Chinese, Spanish, Swedish, Traditional Chinese, Turkish, Ukrainian
- Other convenience: Kensington lock, VESA mount (100 x 100 mm)
- Plug and Play Compatibility: DDC/CI, sRGB, Windows 10 / 8.1 / 8 / 7

Power

- ECO mode: 10.3 W (typ.)
- On mode: 11.92 W (typ.) (EnergyStar test method)
- Standby mode: < 0.5 W (typ.)
- Off mode: < 0.3 W (typ.)
- Energy Label Class: D
- Power LED indicator: Operation - White, Standby mode - White (flashing)
- Power supply: External, 100–240 VAC, 50–60 Hz

Dimensions

- Product without stand (mm): 515 x 317 x 45 mm
- Packaging in mm (W x H x D): 575 x 420 x 161 mm

Weight

- Product without stand (kg): 4.17 kg
- Product with packaging (kg): 6.62 kg

Operating conditions

- Temperature range (operation): 0°C to 40°C °C
- Temperature range (storage): -20°C to 60°C °C
- Relative humidity: 20%-80 %
- Altitude: Operation: +12,000 ft (3658 m), Non-operation: +40,000 ft (12,192 m)
- MTBF (demonstrated): 70,000 hrs (excluded backlight)

Sustainability

- Environmental and energy: EnergyStar 8.0, EPEAT*, TCO Certified Edge, RoHS, WEEE
- Recyclable packaging material: 100 %
- Specific Substances: PVC/BFR free housing, Mercury free

Compliance and standards

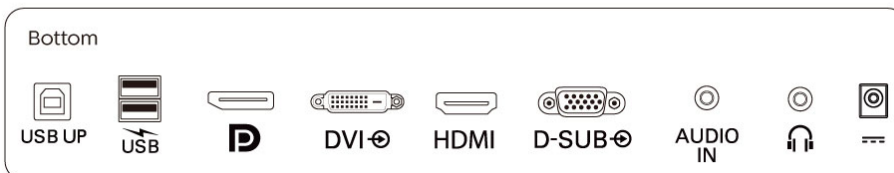
- Regulatory Approvals: CB, CE Mark, FCC Class B, SEMKO, UKRAINIAN, ICES-003, TUV/GS, TUV Ergo, CU-EAC, EAEU RoHS, cETLus

Cabinet

- Front bezel: Black
- Rear cover: Black
- Foot: Black
- Finish: Texture

What's in the box?

- Monitor
- Cables: HDMI cable, USB-A to B cable, Power cable
- User Documentation



Issue date 2021-05-26

Version: 6.1.2

12 NC: 8670 001 62146
EAN: 87 12581 76186 8

© 2021 Koninklijke Philips N.V.
All Rights reserved.

Specifications are subject to change without notice.
Trademarks are the property of Koninklijke Philips N.V.
or their respective owners.

www.philips.com

* Response time value equal to SmartResponse
* Glove material and thickness: Nitrile (0.15 mm), Cotton (0.31 mm), CPE (0.03 mm), PVC (0.12 mm)
* Please refer to "SmoothTouch" in the user manual for more details on operating system support when using the touch function.
* Fast charging complies with USB BC 1.2 standard
* EPEAT rating is valid only where Philips registers the product. Please visit <https://www.epeat.net/> for registration status in your country.
* The monitor may look different from feature images.