



HP Collaboration PC G5 with Intel Unite

Super simple collaboration

Meet with colleagues across town and around the world in an instant with the HP Collaboration PC, with Intel Unite® solution and your choice of display and collaboration accessories³ that make it easier than ever to conference, show and share documents, and more.



HP recommends Windows 10 Pro.

- Windows 10 Pro¹
- HP Sure Start Gen5²

Timesaver conferencing

- Set up quickly with hassle-free installation. No more cabling and configuring software settings. Just enter your PIN and launch the included Intel Unite® solution to start your meeting. It's that easy!

Intelligent, interactive content sharing

- Make your collaborative meetings with remote and local teams more effective by integrating real-time, simultaneous screen sharing and document annotation into your work sessions.

Expansive compatibility

- Integrate Intel Unite® with common unified communications software and support users connecting from multi-platform devices with simple downloadable plug-ins.⁴

Enhanced security and manageability for collaboration

- Get an enterprise ready PC with built-in Intel® vPro™⁵ manageability and HP security features and 256-bit SSL encryption of network traffic.
- Be productive in any situation with Windows 10 Pro, an 8th generation or 9th generation Intel® Core™ vPro™ processor, high-capacity storage, and wireless networking.^{1,5,6,7}
- Easily connect your third-party audio, video, and control system peripherals for a great conference room experience. Mount on a wall or under a table with exclusive accessories.^{8,3}
- Firmware attacks can completely devastate your PC—stay protected with HP Sure Start Gen5 self-healing BIOS.²
- Advanced malware can seriously disrupt your business. HP Sure Recover Gen2 ensures fast, secure, and automated recovery with only a network connection.⁹
- To get control of your PC, attackers first need to take down its defenses. Keep critical security protections up and running with HP Sure Run Gen2.¹⁰
- Help protect your PC from websites and attachments with malware, ransomware or viruses with hardware-enforced security from HP Sure Click.¹¹
- The HP Manageability Integration Kit helps speed up image creation and management of hardware, BIOS, and security through Microsoft System Center Configuration Manager.¹²
- Simplify securing your PC. HP Client Security Manager offers a single interface to set up and manage your PC's powerful security features.¹³
- Rest easy with a PC that goes the distance, is designed to pass 120,000 hours of HP Total Test Process, and undergoes MIL-STD 810G testing.^{14,15}

HP Collaboration PC G5 with Intel Unite Specifications Table



| | |
|--|--|
| Available Operating Systems | Windows 10 Pro 64 – HP recommends Windows 10 Pro. ¹ Windows 10 Pro 64 (National Academic only) ³⁰ |
| Processor family² | 8th Generation Intel® Core™ i5 processor (i5-8500, i5-8500T, i5-8600, i5-8600K); 8th Generation Intel® Core™ i7 processor (i7-8700, i7-8700T, i7-8700K); 9th Generation Intel® Core™ i5 processor (i5-9600, i5-9600K, i5-9600T, i5-9500, i5-9500T); 9th Generation Intel® Core™ i7 processor (i7-9700, i7-9700K, i7-9700T); 9th Generation Intel® Core™ i9 processor (i9-9900, i9-9900K, i9-9900T) |
| Available Processors^{3,4,5,9,31} | Intel® Core™ i5-8500 with Intel® UHD Graphics 630 (3 GHz base frequency, up to 4.1 GHz with Intel® Turbo Boost Technology, 9 MB cache, 6 cores) supports Intel® vPro™ Technology Intel® Core™ i5-8500T with Intel® UHD Graphics 630 (2.1 GHz base frequency, up to 3.5 GHz with Intel® Turbo Boost Technology, 9 MB cache, 6 cores) supports Intel® vPro™ Technology Intel® Core™ i5-8600 with Intel® UHD Graphics 630 (3.1 GHz base frequency, up to 4.3 GHz with Intel® Turbo Boost Technology, 9 MB cache, 6 cores) supports Intel® vPro™ Technology Intel® Core™ i5-8600K with Intel® UHD Graphics 630 (3.6 GHz base frequency, up to 4.3 GHz with Intel® Turbo Boost Technology, 9 MB cache, 6 cores) supports Intel® vPro™ Technology Intel® Core™ i5-9500T with Intel® UHD Graphics 630 (2.2 GHz base frequency, up to 3.7 GHz with Intel® Turbo Boost Technology, 9 MB cache, 6 cores) supports Intel® vPro™ Technology Intel® Core™ i5-9600 with Intel® UHD Graphics 630 (3.1 GHz base frequency, up to 4.6 GHz with Intel® Turbo Boost Technology, 9 MB cache, 6 cores) supports Intel® vPro™ Technology Intel® Core™ i5-9600K with Intel® UHD Graphics 630 (3.7 GHz base frequency, up to 4.6 GHz with Intel® Turbo Boost Technology, 9 MB cache, 6 cores) supports Intel® vPro™ Technology Intel® Core™ i5-9600T with Intel® UHD Graphics 630 (2.3 GHz base frequency, up to 3.9 GHz with Intel® Turbo Boost Technology, 9 MB cache, 6 cores) supports Intel® vPro™ Technology Intel® Core™ i7-8700 with Intel® UHD Graphics 630 (3.2 GHz base frequency, up to 4.6 GHz with Intel® Turbo Boost Technology, 12 MB cache, 6 cores) supports Intel® vPro™ Technology Intel® Core™ i7-8700K with Intel® UHD Graphics 630 (3.7 GHz base frequency, up to 4.7 GHz with Intel® Turbo Boost Technology, 12 MB cache, 6 cores) supports Intel® vPro™ Technology Intel® Core™ i7-8700T with Intel® UHD Graphics 630 (2.4 GHz base frequency, up to 4 GHz with Intel® Turbo Boost Technology, 12 MB cache, 6 cores) supports Intel® vPro™ Technology Intel® Core™ i7-9700K with Intel® UHD Graphics 630 (3.6 GHz base frequency, up to 4.9 GHz with Intel® Turbo Boost Technology, 12 MB cache, 8 cores) supports Intel® vPro™ Technology Intel® Core™ i7-9700T with Intel® UHD Graphics 630 (2 GHz base frequency, up to 4.3 GHz with Intel® Turbo Boost Technology, 12 MB cache, 8 cores) supports Intel® vPro™ Technology Intel® Core™ i9-9900 with Intel® UHD Graphics 630 (3.1 GHz base frequency, up to 5 GHz with Intel® Turbo Boost Technology, 16 MB cache, 8 cores) supports Intel® vPro™ Technology Intel® Core™ i9-9900K with Intel® UHD Graphics 630 (3.6 GHz base frequency, up to 5 GHz with Intel® Turbo Boost Technology, 16 MB cache, 8 cores) supports Intel® vPro™ Technology Intel® Core™ i9-9900T with Intel® UHD Graphics 630 (2.1 GHz base frequency, up to 4.4 GHz with Intel® Turbo Boost Technology, 16 MB cache, 8 cores) supports Intel® vPro™ Technology Intel® Core™ i5-9500 with Intel® UHD Graphics 630 (3 GHz base frequency, up to 4.4 GHz with Intel® Turbo Boost Technology, 9 MB cache, 6 cores) supports Intel® vPro™ Technology Intel® Core™ i7-9700 with Intel® UHD Graphics 630 (3 GHz base frequency, up to 4.8 GHz with Intel® Turbo Boost Technology, 12 MB cache, 8 cores) supports Intel® vPro™ Technology |
| Chipset³¹ | Intel® Q370 (vPro) |
| Form factor | Mini |
| Maximum memory | 32 GB DDR4-2666 SDRAM ^{6,7} |
| Memory slots | 2 SODIMM |
| Internal storage | 500 GB up to 1 TB 7200 rpm SATA HDD ⁸ 2 TB 5400 rpm SATA ⁹ 500 GB SATA SED Opal 2 HDD ⁸ 500 GB 7200 rpm SATA FIPS SED ⁸ 256 GB up to 512 GB SATA SED Opal 2 TLC SSD ⁸ 256 GB up to 512 GB SATA FIPS SSD ⁸ 128 GB up to 1 TB PCIe® NVMe™ M.2 SSD ⁸ 128 GB up to 1 TB PCIe® NVMe™ TLC M.2 SSD ⁸ 256 GB up to 512 GB PCIe® NVMe™ SED Opal 2 TLC M.2 SSD ⁸ 128 GB up to 512 GB SATA SSD ⁸ 500 GB up to 2 TB 5400 rpm SATA SSHD ⁸ |
| Storage acceleration³³ | 16 GB NVMe™ Intel® Optane™ Memory for storage acceleration |
| Available Graphics | Integrated: Intel® UHD Graphics 630 Discrete: AMD Radeon™ RX 560 Graphics (4 GB GDDR5 dedicated) ^{12,32} |
| Audio | Conexant CX20632 codec, universal audio jack, headset and headphone front ports (3.5 mm), multi-streaming capable |
| Expansion slots | 1 M.2 2230; 2 M.2 2230/2280 (1 M.2 slot for WLAN and 2 M.2 2230/2280 slots for storage.) |
| Ports and Connectors | Rear: 1 external antenna connector; 1 power connector; 1 RJ-45; 2 DisplayPort™ 1.2; 2 USB 3.1 Gen 1; 2 USB 3.1 Gen 2 Front: 1 headphone; 1 headset connector; 1 USB 3.1 Gen 1 (charging); 1 USB 3.1 Gen 2; 1 USB 3.1 Type-C™ Gen 2 Optional: 1 DisplayPort™ 1.2; 1 HDMI 2.0; 1 HP Fiber NIC Port Flex IO; 1 serial; 1 USB 3.1 Type-C™ Gen 1 (100W Power Delivery, DisplayPort™); 1 USB 3.1 Type-C™ Gen 1 (DisplayPort™); 1 USB 3.1 Type-C™ Gen 2 (with Thunderbolt™); 1 VGA |
| Input devices | HP PS/2 Keyboard; HP USB and PS/2 Washable Keyboard; HP USB Business Slim Keyboard; HP USB Keyboard; HP USB Smart Card (CCID) Keyboard; HP Wireless Collaboration Keyboard ¹² ; HP PS/2 Mouse; HP USB 1000 dpi Laser Mouse; HP USB and PS/2 Washable Mouse; HP USB Antimicrobial Mouse; HP USB Hardened Mouse; HP USB Optical Mouse; HP USB Premium Mouse ^{12,13,14} |
| LAN | Integrated Intel® I219LM GbE LOM |
| WLAN^{10,11,31} | Intel® Wi-Fi 6 AX200 (2x2) and Bluetooth® M.2 Combo Card vPro™ Intel® Dual Band Wireless-AC 9560 Wi-Fi 5 (2x2) and Bluetooth® 5 M.2, vPro™ |
| Drive Bays | One 2.5" HDD |
| Environmental | Operating temperature: 10 to 35°C; Operating humidity: 10 to 90% RH |
| Available Software^{15,16} | Absolute Persistence module; Buy Office (sold separately); HP Hotkey Support; HP JumpStarts; HP Noise Cancellation Software; HP Support Assistant; HP Wake on WLAN; Intel Unite® Solution |
| Security management^{19,20,21,22,23,26} | Cover removal sensor; HP BIOSphere Gen5; HP Client Security Suite Gen 5; HP DriveLock and Automatic DriveLock; HP Secure Erase; HP Sure Click; HP Sure Recover Gen2; HP Sure Run Gen2; HP Sure Start Gen 5; Power-on password (via BIOS); Setup password (via BIOS); Support for chassis padlocks and cable lock devices; Trusted Platform Module TPM 2.0 Embedded Security Chip shipped with Windows 10 (Common Criteria EAL4+ Certified)(FIPS 140-2 Level 2 Certified); USB enable/disable and boot control (via BIOS) |
| Management features | HP BIOS Config Utility (download); HP Client Catalog (download); HP Driver Packs (download); HP Management Integration Kit for Microsoft System Center Configuration Management Gen 3; HP System Software Manager (download) ^{17,18} |
| Power | 65 W external power adapter, up to 89% efficiency; 90 W external power adapter, up to 89% efficiency |
| Dimensions | 6.96 x 6.88 x 1.33 in; 17.7 x 17.5 x 3.4 cm |
| Weight | 2.31 lb; 1.05 kg |
| Energy efficiency compliance²⁷ | ENERGY STAR® certified; EPEAT® 2019 registered where applicable |
| Environmental specifications²⁸ | Low halogen |

HP Collaboration PC G5 with Intel Unite

Accessories and services (not included)

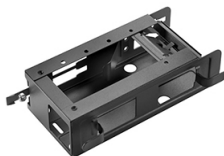
HP LD5512 4K UHD Conferencing Display



Inspire collaboration and productivity among small and medium groups with the extra-large HP LD5512 4K UHD Display. Show and share every detail in 3840 x 2160 resolution on a 55" diagonal screen with integrated dual stereo speakers.

Product number: 2YD85A8

HP DM VESA Power Supply Holder Kit



Simplify cable management when mounting your HP Desktop Mini with the HP DM VESA Power Supply Holder Kit, which attaches to your HP Desktop Mini Security/Dual VESA Sleeve v2 (2JA32AA) to reduce cable clutter from the PC's power supply cable and brick.

Product number: 1RL87AT

HP B300 PC Mounting Bracket



Customize an altogether better solution with the HP B300 PC Mounting Bracket, which lets you attach your HP Workstation, HP Desktop Mini, HP Chromebox or select HP Thin Client directly behind select 2017 and 2018 HP EliteDisplays and HP Z Displays.

Product number: 2DW53AT

HP Desktop Mini Security/Dual VESA Sleeve v2



Wrap your HP Desktop Mini PC in the HP Desktop Mini Security/Dual VESA Sleeve v2 to securely mount it—with or without an Expansion Module¹—behind your display, position the solution on a wall, and lock it down with the integrated security bracket and optional HP Ultra-Slim Cable Lock.

Product number: 2JA32AT

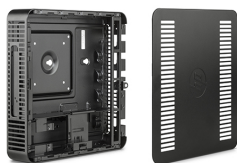
HP DisplayPort to HDMI True 4K Adapter



Make the most of the available ports on your HP Business Desktop or HP Workstation with the HP DisplayPort to HDMI True 4K Adapter, which converts your DisplayPort™ output to HDMI for quick and easy connection to a range of multimedia devices that can support 4K resolution and 60hz refresh.

Product number: 2JA63AA

HP Desktop Mini LockBox V2



Fortify your HP Desktop Mini in a range of settings with the HP Desktop Mini LockBox V2 HP's most secure enclosure for your PC, power brick, and cable connections.

Product number: 3EJ57AT

HP HDMI Port Flex IO (400/600/800)



Maximize the life of your PC as your business needs change with the flexible display connectivity of the HP HDMI Port Flex IO (400/600/800).

Product number: 3TK74AT

HP 5 year Next Business Day Onsite Hardware Support for Desktops



HP Care Pack

When hardware issues come up, the sooner you can get running again, the better. Have expertise at the ready with HP Hardware Next Business Day Onsite Service, and vastly improve your product uptime. With high-quality remote assistance or convenient onsite support available the next business day, help is there when you need it—so you can get back to work.

Product number: U7899E, UE334E

HP Collaboration PC G5 with Intel Unite

Messaging Footnotes

- ¹ Not all features are available in all editions or versions of Windows. Systems may require upgraded and/or separately purchased hardware, drivers, software or BIOS update to take full advantage of Windows functionality. Windows 10 is automatically updated, which is always enabled. ISP fees may apply and additional requirements may apply over time for updates. See <http://www.windows.com>.
- ² HP Sure Start Gen5 is available on select HP PCs with Intel processors. See product specifications for availability.
- ³ Display and accessories sold separately.
- ⁴ Plug-ins downloadable from Intel Unite® App Showcase. See <https://uniteappshowcase.intel.com/>.
- ⁵ Some functionality of vPro technology, such as Intel Active Management Technology and Intel Virtualization Technology, requires additional 3rd party software in order to run. Availability of future "virtual appliances" applications for Intel vPro technology is dependent on 3rd party software providers. Compatibility of this generation of Intel vPro technology-based hardware with future "virtual appliances" is yet to be determined.
- ⁶ Multi-Core is designed to improve performance of certain software products. Not all customers or software applications will necessarily benefit from use of this technology. Performance and clock frequency will vary depending on application workload and your hardware and software configurations. Intel's numbering, branding and/or naming is not a measurement of higher performance.
- ⁷ Wireless access point and Internet service required and sold separately.
- ⁸ Mounting hardware sold separately.
- ⁹ See product specifications for availability. Requires an open, wired network connection. Not available on platforms with multiple internal storage drives. You must back up important files, data, photos, videos, etc. before using HP Sure Recover to avoid loss of data. HP Sure Recover (Gen1) does not support platforms with Intel® Optane™.
- ¹⁰ See product specifications for availability.
- ¹¹ HP Sure Click is available on select HP platforms and supports Microsoft Internet Explorer, Google Chrome™, and Chromium™. Supported attachments include Microsoft Office (Word, Excel, PowerPoint) and PDF files in read-only mode, when Microsoft Office or Adobe Acrobat are installed.
- ¹² HP Manageability Integration Kit can be downloaded from <http://www.hp.com/go/clientmanagement>.
- ¹³ HP Client Security Manager Gen5 requires Windows and is available on select HP Pro and Elite PCs. See product specifications for details.
- ¹⁴ HP Total Test Process testing is not a guarantee of future performance under these test conditions. Any accidental damage requires an optional HP Accidental Damage Protection Care Pack.
- ¹⁵ MIL-STD testing is not intended to demonstrate fitness for U.S. Department of Defense contract requirements or for military use. Test results are not a guarantee of future performance under these test conditions. Any accidental damage requires an optional HP Accidental Damage Protection Care Pack.

Technical Specifications Footnotes

- ¹ Not all features are available in all editions or versions of Windows. Systems may require upgraded and/or separately purchased hardware, drivers, software or BIOS update to take full advantage of Windows functionality. Windows 10 is automatically updated, which is always enabled. ISP fees may apply and additional requirements may apply over time for updates. See <http://www.windows.com/>
- ² Your product does not support Windows 8 or Windows 7. In accordance with Microsoft's support policy, HP does not support the Windows 8 or Windows 7 operating system on products configured with Intel® and AMD 7th generation and forward processors or provide any Windows 8 or Windows 7 drivers on <http://www.support.hp.com>
- ³ Some functionality of vPro, such as Intel Active Management Technology and Intel Virtualization technology, requires additional 3rd party software in order to run. Availability of future "virtual appliances" applications for Intel vPro technology is dependent on 3rd party software providers. Compatibility with future "virtual appliances" is yet to be determined.
- ⁴ Multi-Core is designed to improve performance of certain software products. Not all customers or software applications will necessarily benefit from use of this technology. Performance and clock frequency will vary depending on application workload and your hardware and software configurations. Intel's numbering, branding and/or naming is not a measurement of higher performance.
- ⁵ Intel® Turbo Boost technology requires a PC with a processor with Intel Turbo Boost capability. Intel Turbo Boost performance varies depending on hardware, software and overall system configuration. See www.intel.com/technology/turboboost for more information.
- ⁶ For systems configured with more than 3 GB of memory and a 32-bit operating system, all memory may not be available due to system resource requirements. Addressing memory above 4 GB requires a 64-bit operating system. Memory modules support data transfer rates up to 2666 MT/s; actual data rate is determined by the system's configured processor. See processor specifications for supported memory data rate.
- ⁷ All memory slots are customer accessible / upgradeable.
- ⁸ For hard drives and solid state drives, GB = 1 billion bytes. TB = 1 trillion bytes. Actual formatted capacity is less. Up to 36 GB (for Windows 10) of system disk is reserved for the system recovery software.
- ⁹ Only select processors available with each configuration.
- ¹⁰ Wireless access point and Internet service required and sold separately. Availability of public wireless access points limited. Wi-Fi 6 is backwards compatible with prior 802.11 specs. The specifications for Wi-Fi 6 (802.11ax) are draft and are not final. If the final specifications differ from the draft specifications, it may affect the ability of the notebook to communicate with other 802.11ax devices. Only available in countries where 802.11ax is supported.
- ¹¹ Wireless access point and Internet service required and sold separately. Availability of public wireless access points limited. Wi-Fi 5 (802.11ac) is backwards compatible with prior 802.11 specs.
- ¹² Sold separately or as an optional feature.
- ¹³ HP USB Antimicrobial Mouse: Not available in all regions.
- ¹⁴ HP USB Hardened Mouse: Not available in all regions.
- ¹⁵ Absolute Persistence Module: Absolute firmware module is shipped turned off and can only be activated with the purchase a license subscription and full activation of the software agent. License subscriptions can be purchased for terms ranging multiple years. Service is limited, check with Absolute for availability outside the U.S. Certain conditions apply. For full details visit: <https://www.absolute.com/about/legal/agreements/absolute/>.
- ¹⁶ HP Support Assistant: Requires Windows and Internet access.
- ¹⁷ HP Driver Packs: Not preinstalled, however available for download at <http://www.hp.com/go/clientmanagement>.
- ¹⁸ HP Manageability Integration Kit can be downloaded from <http://www.hp.com/go/clientmanagement>.
- ¹⁹ HP BIOSphere Gen5 is available on select HP Pro and Elite PCs. See product specifications for details. Features may vary depending on the platform and configurations.
- ²⁰ For the methods outlined in the National Institute of Standards and Technology Special Publication 800-88 "Clear" sanitation method. HP Secure Erase does not support platforms with Intel® Optane™.
- ²¹ HP Sure Recover Gen2: See product specifications for availability. Requires an open, wired network connection. Not available on platforms with multiple internal storage drives. You must back up important files, data, photos, videos, etc. before using HP Sure Recover to avoid loss of data. HP Sure Recover (Gen1) does not support platforms with Intel® Optane™.
- ²² HP Sure Click is available on select HP platforms and supports Microsoft Internet Explorer, Google Chrome™, and Chromium™. Supported attachments include Microsoft Office (Word, Excel, PowerPoint) and PDF files in read only mode, when Microsoft Office or Adobe Acrobat are installed.
- ²³ HP Client Security Manager Gen5 requires Windows and is available on the select HP Pro and Elite PCs. See product specifications for details.
- ²⁶ HP Sure Run Gen2: See product specifications for availability.
- ²⁷ Based on US EPEAT® registration according to IEEE 1680.1-2018 EPEAT®. Status varies by country. Visit www.epeat.net for more information.
- ²⁸ External power supplies, power cords, cables and peripherals are not Low Halogen. Service parts obtained after purchase may not be Low Halogen.
- ³⁰ Some devices for academic use will automatically be updated to Windows 10 Pro Education with the Windows 10 Anniversary Update. Features vary; see <https://aka.ms/ProEducation> for Windows 10 Pro Education feature information.
- ³¹ For full Intel® vPro™ functionality, Windows, a vPro supported processor, vPro enabled chipset, vPro enabled wired LAN card and discrete TPM 2.0 are required. See <http://intel.com/vpro>
- ³² HD content required to view HD images.
- ³³ Intel® Optane™ memory is sold separately. Intel® Optane™ memory system acceleration does not replace or increase the DRAM in your system. Available for HP commercial desktops and notebooks and for select HP workstations (HP Z240 Tower/SFF, Z2 Mini, ZBook Studio, 15 and 17 G5) and requires a SATA HDD, 7th Gen or higher Intel® Core™ processor or Intel® Xeon® processor E3-1200 V6 product family or higher, BIOS version with Intel® Optane™ supported, Windows 10 version 1703 or higher, M.2 type 2280-S1-B-M connector on a PCH Remapped PCIe Controller and Lanes in a x2 or x4 configuration with B-M keys that meet NVMe™ Spec 1.1, and an Intel® Rapid Storage Technology (Intel® RST) 15.5 driver.

Sign up for updates hp.com/go/getupdated

© Copyright 2019 HP Development Company, L.P. The information contained herein is subject to change without notice. The only warranties for HP products and services are set forth in the express warranty statements accompanying such products and services. Nothing herein should be construed as constituting an additional warranty. HP shall not be liable for technical or editorial errors or omissions contained herein.

Intel, the Intel logo, Optane, vPro, Unite and Core Inside are trademarks or registered trademarks of Intel Corporation or its subsidiaries in the United States and other countries. Adobe PDF is a trademark of Adobe Systems Incorporated. USB Type-C™ and USB-C™ are trademarks of USB Implementers Forum. DisplayPort™ and the DisplayPort™ logo are trademarks owned by the Video Electronics Standards Association (VESA®) in the United States and other countries. AMD and Radeon are trademarks of Advanced Micro Devices, Inc. ENERGY STAR and the ENERGY STAR mark are registered trademarks owned by the U.S. Environmental Protection Agency. All other trademarks are the property of their respective owners.

4AA7-5701ENUC, 2019 August 22

