



# USB TYPE-C DOCK III

## USER MANUAL

© 2019. All Rights Reserved.  
Acer USB Type-C Dock III  
Cover: ADK930  
This revision: December 2019

Changes may be periodically made to the information in this publication without obligation to notify anyone of such revisions or changes. Such changes will be incorporated into new editions of this manual or supplementary documents and publications. This company makes no representations or warranties, either expressed or implied, with respect to the contents hereof, and specifically disclaims the implied warranties of merchantability or fitness for a particular purpose.

Record the model number, serial number, purchase date, and place of purchase information in the space provided below. The serial number and model number are recorded on the label affixed to your docking station. All correspondence concerning your unit should include the serial number, model number, and purchase information.

No part of this publication may be reproduced, stored in a retrieval system, or be transmitted, in any form or by any means, electronic, mechanical, photocopy, recording, or otherwise, without the prior written permission of Acer Incorporated.

Model number: \_\_\_\_\_

Serial number: \_\_\_\_\_

Date of purchase: \_\_\_\_\_

Place of purchase: \_\_\_\_\_

# INTRODUCTION

The new Acer USB Type-C Dock III is designed for extra connectivity demands and supports DP 1.4 output. With this docking station, you can extend the connection of a computer to more USB peripherals, an ethernet network, speakers and a microphone via USB-C. The USB Type-C plug is reversible and fits either way. By adopting PD charging to allow upstream charging over USB-C, you can charge the host up to 85W with a 100W or higher power adapter, or automatically adjust to lower charging with a smaller power adapter. With the built-in USB 3.1 ports, the docking station allows you to enjoy super high-speed data transmission between USB peripherals.

## Features

### *USB-C Input*

- USB-C 3.1 Gen 2 port
- Upstream PD supporting up to 85W
- Supports VESA USB Type-C DisplayPort Alt mode

### *Downstream Output*

- 2 x USB-A 3.1 Gen 2 ports (5V/0.9A)
- 1 x USB-A 3.1 Gen 2 port with BC 1.2 CDP (5V/1.5A) and DCP and Apple Charge 2.4A

### *Video output*

NB support	1x Display	2x Display	3x Display
DP1.2 HBR2	1x 4K30	2x FHD60	3x FHD30
DP1.4 HBR3	1x 4K60	2x QHD60	3x FHD60
DP1.4 HBR3 DSC	1x 5K60*	2x 4K60	3x 4K30



#### Note

\* Dual DP cables to one monitor

*Supports audio 2.1 channels*

*Supports gigabit ethernet*

## Package Contents

- Acer USB Type-C Dock III Device
- Power Adapter
- Power Cord
- USB Type-C Cable
- Quick Start Guide
- Warranty



### Note

*Package contents vary depending on model and/or region.*

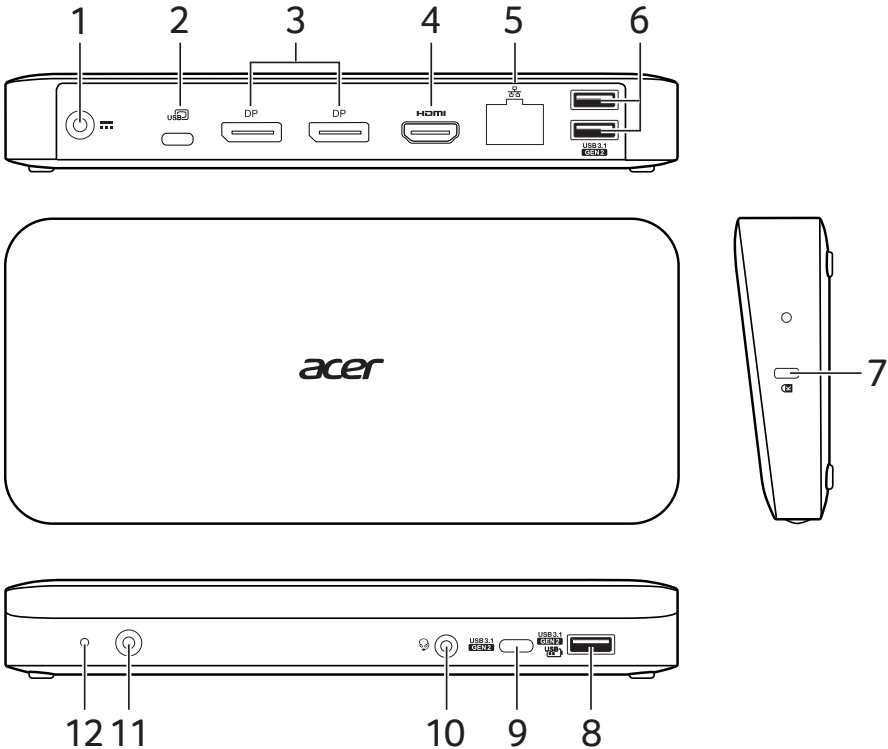
## System Requirements

- Windows 10
- Mac OS 10.14.2 above (Duplicate mode only)

# PRODUCT OVERVIEW

This section describes the ports and connectors of the Acer USB Type-C Dock III.

## Views



#	Item	Description
1	DC-in jack	Connects to the AC adapter to power the dock. <b>Note:</b> Only use the 135W power adapter included with the dock.
2	USB Type-C port	Powers and connects to your notebook.
3	DisplayPort 1.4++ ports	Supports high-definition digital video connections.

#	Item	Description
4	HDMI 2.0 port	Supports high-definition digital audio/video connections.
5	Ethernet (RJ-45) port	Connects to an Ethernet 10/100/1000Base network.
6	USB 3.1 ports	Connect to USB devices.
7	Kensington lock	Connects to a Kensington-compatible security lock.
8	USB 3.1 port with BC 1.2 charging	Connects to USB devices with BC 1.2 charging.
9	USB Type-C port	Connects to USB Type-C devices for data transfer only.
10	Headset/speaker jack	Connects to audio devices (e.g. speakers, headphones) or a headset with microphone.
11	Power button	Press to turn your dock on and off.
12	Power indicator	Indicates the dock power status.



**Note**

*The dock power button is unable to mirror what the host power button does. The power indicator is unable to reflect the power status of the host. Your computer must feature a USB Type-C port that supports Power Delivery, Display Port, and data transfer functions at the same time.*

# DISPLAY CONFIGURATION

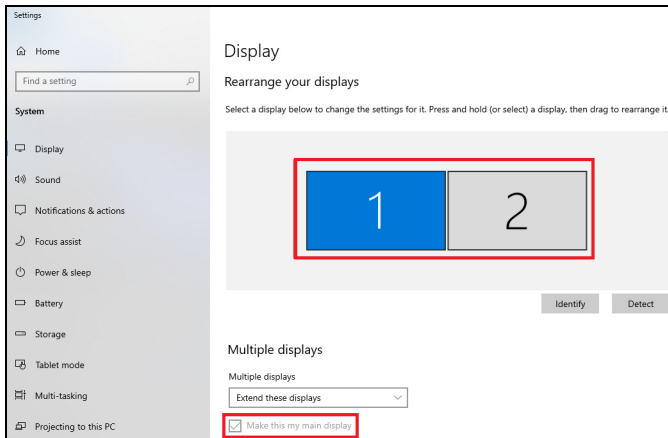
## Multi-monitor configuration

Once extra monitors are connected, they can be configured to either **Duplicate mode**, **Extend mode** or set as the primary display.

Position the mouse anywhere on the Windows desktop, right-click and select **Display settings**.

### Set the primary monitor

Select the preferred monitor and check **Make this my main display** to make it your main display.



#### Note

*For some computers, you may need to disable the main display by unchecking “Extend the desktop onto this monitor” or “Extend my Windows desktop onto this monitor.” (Screenshots may vary slightly with the operating system.)*

## Duplicate mode

1. Select **Multiple Displays > Duplicate these displays**.
2. Click **Keep changes** to confirm.

## Extend mode

1. Select **Multiple Displays > Extend these displays**.
2. Click **Keep changes** to confirm.
3. Once the setting is completed, simply drag and drop application icons or open windows on the external monitor. However, some applications may not support being displayed on the extended desktop.



### Note

*If the system only supports SST mode, connected external monitors will be considered the same output.*

#### 4. Troubleshooting

- Video playback in Extend mode

If video or DVD playback quality is poor or suffers from low performance in Extend mode, please play it on the primary monitor instead of the external monitor.

## SST mode

If the system only supports SST mode, connected external monitors will be considered the same output.

## MST mode

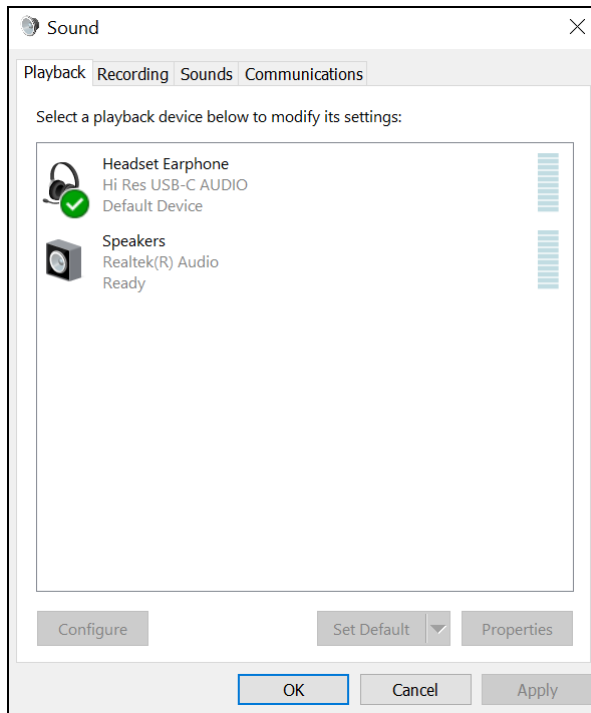
When using MST mode to connect external monitors, you can use Duplicate mode, Extend mode or set the primary display.



# AUDIO CONFIGURATION

By default, when the docking station is connected to a computer, the audio configuration will attempt to change to **USB (Multimedia) Audio Device** automatically (this setting depends on the model). If this does not work, follow the steps below to set it up.

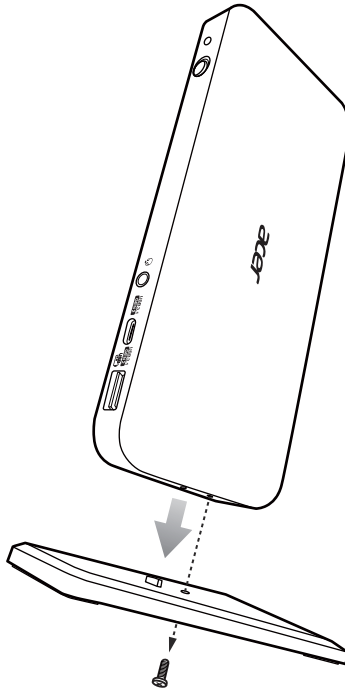
1. Open **Control Panel** and then select the **Hardware and Sound**.
2. Click **Sound > Manage audio devices** and then select **USB Audio Device**.



## SETTING UP

---

The dock comes with a vertical stand as illustrated. You may choose to place the dock horizontally or vertically.



# REGULATORY INFORMATION AND SAFETY GUIDE

---

Read these instructions carefully. Keep this document for future reference. Follow all warnings and instructions marked on the product.

## General

- Do not use this product near water.
- Do not place this product on an unstable surface, stand or table. If the product falls, it could be seriously damaged.
- Slots and openings are provided for ventilation to ensure reliable operation of the product and to protect it from overheating. These openings must not be blocked or covered. The openings should never be blocked by placing the product on a bed, sofa, rug or other similar surfaces. This product should never be placed near or over a radiator or heat source, or used in a built-in installation unless proper ventilation is provided.
- Never push objects of any kind into this product through the cabinet slots as they may touch dangerous voltage points or short out parts that could result in a fire or electric shock. Never spill liquid of any kind onto or into the product.
- To avoid damaging internal components and to prevent battery leakage, do not place the product on a vibrating surface.
- The bottom surface, areas around ventilation openings and the AC adapter may get hot. To avoid injury, ensure they do not come into contact with your skin or body.
- Your device and its accessories may contain small parts. Keep them out of the reach of small children.

## **Safety instructions**

### Product servicing

Do not attempt to service this product yourself, as opening or removing the covers may expose you to dangerous voltage points or other risks. Refer all servicing to qualified service personnel.

Unplug this product from the wall outlet and request the assistance of qualified service personnel when:

- The power cord or plug is damaged, cut or frayed.
- Liquid was spilled into the product.
- The product was exposed to rain or water.
- The product was dropped or the case damaged.
- The product exhibits a distinct change in performance, indicating a need for service.
- The product does not operate normally after following the operating instructions.



### Note

*Only adjust the controls which are covered by the operating instructions, since improper adjustment of other controls may result in damage and could require extensive work by a qualified technician to restore the product to its normal condition.*

### Unplug the product before cleaning

Unplug the product from the wall outlet before cleaning. Do not use liquid cleaners or aerosol cleaners. Use a damp cloth for cleaning.

## Warnings

### Accessing the power

Be sure that the power outlet you plug into is easily accessible and located as close to the equipment as possible. When you need to disconnect the power to the equipment, be sure to unplug it from the electrical outlet.

### Disconnecting the power source

Observe the following guidelines when connecting and disconnecting power to the power supply unit:

Install the power supply unit before connecting the AC power outlet.

If the system has multiple sources of power, disconnect power from the system by unplugging all power cords from the power supplies.

## Using electrical power

- Do not connect the adapter to any other device.
- When unplugging the power cord, do not pull on the cord itself but pull on the plug instead.
- This product should be operated using the type of power indicated on the marking label. If you are not sure of the type of power available, consult your dealer or local power company.
- Do not allow anything to rest on the power cord. Do not locate this product where people could walk on the cord.
- If an extension cable is used with this product, make sure that the total ampere rating of the equipment plugged into the extension cable does not exceed its ampere rating. Also make sure that the total rating of all products plugged into the wall outlet does not exceed the fuse rating.
- Do not overload a power outlet, strip or receptacle by plugging in too many devices. The overall system load must not exceed 80% of the branch circuit rating. If power strips are used, the load should not exceed 80% of the power strip's input rating.
- If this product's AC adapter is equipped with a three-wire grounded plug, the plug will only fit in a grounded power outlet. Make sure the power outlet is properly grounded before inserting the AC plug. Do not insert the plug into a non-grounded power outlet. Contact your electrician for details..



### **Warning**

**The grounding pin is a safety feature. Using a power outlet that is not properly grounded may result in electric shock and/or injury.**



### **Note**

*The grounding pin also provides good protection from unexpected noise produced by other nearby electrical devices that may interfere with the performance of this product.*

- The system can be powered using a wide range of voltages: 100-120 or 220-240 V AC or 100-240 V AC. The power cord included with the system meets the requirements for use in the country/region where the system was purchased. Power cords for use in

other countries/regions must meet the requirements for that country/region. For more information on power cord requirements, contact an authorized reseller or service provider.

### Protecting your hearing

To protect your hearing, follow these instructions:

- Increase the volume gradually until you can hear clearly and comfortably.
- Do not increase the volume level after your ears have adjusted.
- Do not listen to music at high volume for extended periods of time.
- Do not increase the volume to block out noisy surroundings.
- Decrease the volume if you cannot hear people speaking near you.



#### **Warning**



**Permanent hearing loss may occur if earphones or headphones are used at high volume for prolonged periods of time.**

## Disposal instructions

Do not throw this electronic device into the rubbish when discarding. To minimize pollution and ensure utmost protection of the global environment, please recycle. For more information on the Waste from Electrical and Electronics Equipment (WEEE) regulations, visit **<https://www.acer-group.com/public/Sustainability>**



## FCC statement

This device has been tested and found to comply with the limits for a Class B digital device pursuant to Part 15 of the FCC rules. These limits are designed to provide reasonable protection against harmful interference in a residential installation. This device generates, uses, and can radiate radio frequency energy and, if not installed and used in accordance with the instructions, may cause harmful interference to radio communications.

However, there is no guarantee that interference will not occur in a particular installation. If this device does cause harmful interference to

radio or television reception, which can be determined by turning the device off and on, the user is encouraged to try to correct the interference by one or more of the following measures:

- Reorient or relocate the receiving antenna.
- Increase the separation between the device and receiver.
- Connect the device into an outlet on a circuit different from that to which the receiver is connected.
- Consult the dealer or an experienced radio/television technician for help.

This device complies with Part 15 of the FCC Rules. Operation is subject to the following two conditions: (1) this device may not cause harmful interference, and (2) this device must accept any interference received, including interference that may cause undesired operation.

### *Notice: Shielded cables*

All connections to other computing devices must be made using shielded cables to maintain compliance with FCC regulations.

### *Notice: Peripheral devices*

Only peripherals (input/output devices, terminals, printers etc.) certified to comply with the Class B limits may be attached to this equipment. Operation with non-certified peripherals is likely to result in interference to radio and TV reception.

### *Caution*

Changes or modifications not expressly approved by the manufacturer could void the user's authority, which is granted by the Federal Communications Commission, to operate this computer.

### *Notice: Canadian users*

This Class B digital apparatus complies with Canadian ICES-003.

### *Remarque à l'intention des utilisateurs canadiens*

Cet appareil numérique de la classe B est conforme à la norme NMB-003 du Canada.

*Compliant with Russian regulatory certification*



*Declaration of Conformity for EU countries*

Acer Inc. hereby declares that this USB Type-C Dock III is in compliance with the essential requirements and other relevant provisions of EMC Directive 2014/30/EU and RoHS Directive 2011/65/EU.

*List of National Codes*

This equipment may be operated in the following countries:

Country	ISO 3166 2 letter code	Country	ISO 3166 2 letter code
Austria	AT	Malta	MT
Belgium	BE	Netherlands	NT
Cyprus	CY	Poland	PL
Czech Republic	CZ	Portugal	PT
Denmark	DK	Russia	RU
Estonia	EE	Slovakia	SK
Finland	FI	Slovenia	SL
France	FR	Spain	ES
Germany	DE	Sweden	SE
Greece	GR	United Kingdom	GB
Hungary	HU	Iceland	IS
Ireland	IE	Liechtenstein	LI
Italy	IT	Norway	NO
Latvia	LV	Switzerland	CH
Lithuania	LT	Bulgaria	BG
Luxembourg	LU	Romania	RO
		Turkey	TR

*Operating environment*

- Temperature: 0 °C to 40 °C
- Humidity (non-condensing): 20% to 80%



### *Storage and Transporting environment*

The product is recommended to be transported in the original packaging and stored under the following conditions:

- Temperature: -20 °C to 70 °C
- Humidity (non-condensing): 20% to 60%

# SPECIFICATION

Colour Options	Black
Dimensions and weight	<b>Dimensions</b>
	190 (L) x 85 (W) x 27 (H) mm (7.48 x 3.35 x 1.06 inches)
	<b>Weight</b> 240 g (0.53 lbs)
Display	Max. Resolution of Extended Display <DP1.2 HBR2> 1x 4K30, 2x FHD60, 3x FHD30 <DP1.4 HBR3> 1x 4K60, 2x QHD60, 3x FHD60 <DP1.4 HBR3 DSC> 1x 5K60, 2x 4K60, 3x 4K30
Audio	Combo Audio (supports 2.1 audio channels)
Video Output	2 x DP1.4++ 1 x HDMI 2.0
Networking	Ethernet LAN 10/100/1000 Mbps
Power delivery profiles	Supports: 5V/9V/15V@3A, 20V@4.25A
USB Type-C ports	Upstream port: 1 x USB 3.1 Type-C PD 85W (rear) Downstream Output: 1 x USB-C 3.1 Gen 2 port (5V/1.5A)
USB Type-A ports	Downstream Output: 2 x USB-A 3.1 Gen 2 ports (5V/0.9A) 1 x USB-A 3.1 Gen 2 port with BC1.2 (5V/1.5A) and Apple Charge 2.4A
Power mode	Self-Power
Power adapter	3-pin 135W AC adapter Input: AC 100-240V Output: DC 20V/6.75A
Security	Kensington lock slot
Certificated	CE/FCC/RCM
Manufacturer	Acer Inc 8F, No. 88, Sec. 1, Xintai 5th Rd., Xizhi, New Taipei City 221, Taiwan