

XPS 13 7390 2-in-1

Service Manual



Notes, cautions, and warnings

 **NOTE:** A NOTE indicates important information that helps you make better use of your product.

 **CAUTION:** A CAUTION indicates either potential damage to hardware or loss of data and tells you how to avoid the problem.

 **WARNING:** A WARNING indicates a potential for property damage, personal injury, or death.

Contents


| | |
|---|-----------|
| 1 Safety instructions..... | 5 |
| Before working inside your computer..... | 5 |
| Before you begin | 5 |
| Electrostatic discharge—ESD protection..... | 6 |
| ESD field service kit | 6 |
| Transporting sensitive components..... | 7 |
| After working inside your computer..... | 7 |
| 2 Removing and installing components..... | 8 |
| Recommended tools..... | 8 |
| Screw list..... | 8 |
| Base cover..... | 9 |
| Removing the base cover..... | 9 |
| Installing the base cover..... | 12 |
| Battery..... | 13 |
| Removing the battery..... | 13 |
| Installing the battery..... | 15 |
| Display assembly..... | 16 |
| Removing the display assembly..... | 16 |
| Installing the display assembly..... | 18 |
| Speakers..... | 20 |
| Removing the speakers..... | 20 |
| Installing the speakers..... | 21 |
| System-board assembly..... | 21 |
| Removing the system board..... | 21 |
| Installing the system board..... | 24 |
| Keyboard assembly..... | 27 |
| Removing the keyboard assembly..... | 27 |
| Installing the Keyboard..... | 28 |
| Palm-rest assembly..... | 31 |
| Removing the palm-rest and keyboard assembly..... | 31 |
| Installing the palm-rest assembly..... | 31 |
| 3 Device drivers..... | 33 |
| Intel Chipset Software Installation Utility..... | 33 |
| Video drivers..... | 33 |
| Intel Serial IO driver..... | 33 |
| Intel Trusted Execution Engine Interface..... | 33 |
| Intel Virtual Button driver..... | 33 |
| Wireless and Bluetooth drivers..... | 33 |
| 4 System setup..... | 34 |
| BIOS overview..... | 34 |
| Entering BIOS setup program..... | 34 |

| | |
|---|-----------|
| Navigation keys..... | 34 |
| Boot Sequence..... | 35 |
| System setup options..... | 35 |
| System and setup password..... | 43 |
| Assigning a system setup password..... | 44 |
| Deleting or changing an existing system setup password..... | 44 |
| Clearing CMOS settings..... | 45 |
| Clearing BIOS (System Setup) and System passwords..... | 45 |
| 5 Troubleshooting..... | 46 |
| Dell SupportAssist Pre-boot System Performance Check diagnostics..... | 46 |
| Running the SupportAssist Pre-Boot System Performance Check..... | 46 |
| Recovering the operating system..... | 46 |
| Flashing BIOS (USB key)..... | 47 |
| Flashing the BIOS..... | 47 |
| Backup media and recovery options..... | 47 |
| WiFi power cycle..... | 47 |
| Flea power release..... | 48 |
| 6 Getting help and contacting Dell..... | 49 |


Safety instructions

Use the following safety guidelines to protect your computer from potential damage and to ensure your personal safety. Unless otherwise noted, each procedure included in this document assumes that you have read the safety information that shipped with your computer.


 **NOTE:** Before working inside your computer, read the safety information that shipped with your computer. For more safety best practices, see the Regulatory Compliance home page at www.dell.com/regulatory_compliance.


 **NOTE:** Disconnect all power sources before opening the computer cover or panels. After you finish working inside the computer, replace all covers, panels, and screws before connecting to the electrical outlet.

 **CAUTION:** To avoid damaging the computer, ensure that the work surface is flat and clean.

 **CAUTION:** Handle components and cards with care. Do not touch the components or contacts on a card. Hold a card by its edges or by its metal mounting bracket. Hold a component such as a processor by its edges, not by its pins.

 **CAUTION:** You should only perform troubleshooting and repairs as authorized or directed by the Dell technical assistance team. Damage due to servicing that is not authorized by Dell is not covered by your warranty. See the safety instructions that shipped with the product or at www.dell.com/regulatory_compliance.

 **CAUTION:** Before touching anything inside your computer, ground yourself by using a wrist grounding strap or by periodically touching an unpainted metal surface, such as the metal at the back of the computer. While you work, periodically touch an unpainted metal surface to dissipate static electricity, which could harm internal components.

 **CAUTION:** When you disconnect a cable, pull on its connector or on its pull tab, not on the cable itself. Some cables have connectors with locking tabs or thumb-screws that you must disengage before disconnecting the cable. When disconnecting cables, keep them evenly aligned to avoid bending any connector pins. When connecting cables, ensure that the ports and connectors are correctly oriented and aligned.

 **CAUTION:** Press and eject any installed card from the media-card reader.

 **NOTE:** The color of your computer and certain components may appear differently than shown in this document.

Topics:


- [Before working inside your computer](#)
- [Electrostatic discharge—ESD protection](#)
- [ESD field service kit](#)
- [Transporting sensitive components](#)
- [After working inside your computer](#)

Before working inside your computer

 **NOTE:** The images in this document may differ from your computer depending on the configuration you ordered.

Before you begin

Steps

1. Save and close all open files and exit all open applications.
2. Shut down your computer. Click **Start** >  **Power** > **Shut down**.



NOTE: If you are using a different operating system, see the documentation of your operating system for shut-down instructions.

3. Disconnect your computer and all attached devices from their electrical outlets.
4. Disconnect all attached network devices and peripherals, such as keyboard, mouse, and monitor from your computer.
5. Remove any media card and optical disc from your computer, if applicable.

Electrostatic discharge—ESD protection

ESD is a major concern when you handle electronic components, especially sensitive components such as expansion cards, processors, memory DIMMs, and system boards. Very slight charges can damage circuits in ways that may not be obvious, such as intermittent problems or a shortened product life span. As the industry pushes for lower power requirements and increased density, ESD protection is an increasing concern.

Due to the increased density of semiconductors used in recent Dell products, the sensitivity to static damage is now higher than in previous Dell products. For this reason, some previously approved methods of handling parts are no longer applicable.

Two recognized types of ESD damage are catastrophic and intermittent failures.

- **Catastrophic** – Catastrophic failures represent approximately 20 percent of ESD-related failures. The damage causes an immediate and complete loss of device functionality. An example of catastrophic failure is a memory DIMM that has received a static shock and immediately generates a "No POST/No Video" symptom with a beep code emitted for missing or nonfunctional memory.
- **Intermittent** – Intermittent failures represent approximately 80 percent of ESD-related failures. The high rate of intermittent failures means that most of the time when damage occurs, it is not immediately recognizable. The DIMM receives a static shock, but the tracing is merely weakened and does not immediately produce outward symptoms related to the damage. The weakened trace may take weeks or months to melt, and in the meantime may cause degradation of memory integrity, intermittent memory errors, etc.

The more difficult type of damage to recognize and troubleshoot is the intermittent (also called latent or "walking wounded") failure.

Perform the following steps to prevent ESD damage:

- Use a wired ESD wrist strap that is properly grounded. The use of wireless anti-static straps is no longer allowed; they do not provide adequate protection. Touching the chassis before handling parts does not ensure adequate ESD protection on parts with increased sensitivity to ESD damage.
- Handle all static-sensitive components in a static-safe area. If possible, use anti-static floor pads and workbench pads.
- When unpacking a static-sensitive component from its shipping carton, do not remove the component from the anti-static packing material until you are ready to install the component. Before unwrapping the anti-static packaging, ensure that you discharge static electricity from your body.
- Before transporting a static-sensitive component, place it in an anti-static container or packaging.

ESD field service kit

The unmonitored Field Service kit is the most commonly used service kit. Each Field Service kit includes three main components: anti-static mat, wrist strap, and bonding wire.

Components of an ESD field service kit

The components of an ESD field service kit are:

- **Anti-Static Mat** – The anti-static mat is dissipative and parts can be placed on it during service procedures. When using an anti-static mat, your wrist strap should be snug and the bonding wire should be connected to the mat and to any bare metal on the system being worked on. Once deployed properly, service parts can be removed from the ESD bag and placed directly on the mat. ESD-sensitive items are safe in your hand, on the ESD mat, in the system, or inside a bag.
- **Wrist Strap and Bonding Wire** – The wrist strap and bonding wire can be either directly connected between your wrist and bare metal on the hardware if the ESD mat is not required, or connected to the anti-static mat to protect hardware that is temporarily placed on the mat. The physical connection of the wrist strap and bonding wire between your skin, the ESD mat, and the hardware is known as bonding. Use only Field Service kits with a wrist strap, mat, and bonding wire. Never use wireless wrist straps. Always be aware that the internal wires of a wrist strap are prone to damage from normal wear and tear, and must be checked regularly with a wrist strap tester in order to avoid accidental ESD hardware damage. It is recommended to test the wrist strap and bonding wire at least once per week.
- **ESD Wrist Strap Tester** – The wires inside of an ESD strap are prone to damage over time. When using an unmonitored kit, it is a best practice to regularly test the strap prior to each service call, and at a minimum, test once per week. A wrist strap tester is the best method for doing this test. If you do not have your own wrist strap tester, check with your regional office to find out if they have

one. To perform the test, plug the wrist-strap's bonding-wire into the tester while it is strapped to your wrist and push the button to test. A green LED is lit if the test is successful; a red LED is lit and an alarm sounds if the test fails.

- **Insulator Elements** – It is critical to keep ESD sensitive devices, such as plastic heat sink casings, away from internal parts that are insulators and often highly charged.
- **Working Environment** – Before deploying the ESD Field Service kit, assess the situation at the customer location. For example, deploying the kit for a server environment is different than for a desktop or portable environment. Servers are typically installed in a rack within a data center; desktops or portables are typically placed on office desks or cubicles. Always look for a large open flat work area that is free of clutter and large enough to deploy the ESD kit with additional space to accommodate the type of system that is being repaired. The workspace should also be free of insulators that can cause an ESD event. On the work area, insulators such as Styrofoam and other plastics should always be moved at least 12 inches or 30 centimeters away from sensitive parts before physically handling any hardware components.
- **ESD Packaging** – All ESD-sensitive devices must be shipped and received in static-safe packaging. Metal, static-shielded bags are preferred. However, you should always return the damaged part using the same ESD bag and packaging that the new part arrived in. The ESD bag should be folded over and taped shut and all the same foam packing material should be used in the original box that the new part arrived in. ESD-sensitive devices should be removed from packaging only at an ESD-protected work surface, and parts should never be placed on top of the ESD bag because only the inside of the bag is shielded. Always place parts in your hand, on the ESD mat, in the system, or inside an anti-static bag.
- **Transporting Sensitive Components** – When transporting ESD sensitive components such as replacement parts or parts to be returned to Dell, it is critical to place these parts in anti-static bags for safe transport.

ESD protection summary


It is recommended that all field service technicians use the traditional wired ESD grounding wrist strap and protective anti-static mat at all times when servicing Dell products. In addition, it is critical that technicians keep sensitive parts separate from all insulator parts while performing service and that they use anti-static bags for transporting sensitive components.

Transporting sensitive components

When transporting ESD sensitive components such as replacement parts or parts to be returned to Dell, it is critical to place these parts in anti-static bags for safe transport.

Lifting equipment

Adhere to the following guidelines when lifting heavy weight equipment:

 **CAUTION:** Do not lift greater than 50 pounds. Always obtain additional resources or use a mechanical lifting device.

1. Get a firm balanced footing. Keep your feet apart for a stable base, and point your toes out.
2. Tighten stomach muscles. Abdominal muscles support your spine when you lift, offsetting the force of the load.
3. Lift with your legs, not your back.
4. Keep the load close. The closer it is to your spine, the less force it exerts on your back.
5. Keep your back upright, whether lifting or setting down the load. Do not add the weight of your body to the load. Avoid twisting your body and back.
6. Follow the same techniques in reverse to set the load down.

After working inside your computer

About this task

 **CAUTION:** Leaving stray or loose screws inside your computer may severely damage your computer.

Steps

1. Replace all screws and ensure that no stray screws remain inside your computer.
2. Connect any external devices, peripherals, or cables you removed before working on your computer.
3. Replace any media cards, discs, or any other parts that you removed before working on your computer.
4. Connect your computer and all attached devices to their electrical outlets.
5. Turn on your computer.

Removing and installing components

Recommended tools

The procedures in this document may require the following tools:

- Phillips screwdriver #00
- Phillips screwdriver #0
- Torx screwdriver T5
- Flat-head screwdriver
- Plastic scribe

Screw list

- NOTE:** When removing screws from a component, it is recommended to note the screw type, the quantity of screws, and then place them in a screw storage box. This is to ensure that the correct number of screws and correct screw type is restored when the component is replaced.
- NOTE:** Some computers have magnetic surfaces. Ensure that the screws are not left attached to such surface when replacing a component.
- NOTE:** Screw color may vary with the configuration ordered.

Table 1. Screw list














| Component | Secured to | Screw type | Quantity | Screw image |
|-----------------------|--------------------|------------|--|---|
| Base cover | Palm-rest assembly | M2x4.5 | 8 Torx screws |  |
| Battery | System board | M1.6x3.4 | 1 Torx screw |  |
| Battery | Palm-rest assembly | M1.6x3 | 7 |  |
| Battery | Palm-rest assembly | M1.2x4 | 2 |  |
| Display-cable bracket | System board | M1.6x3 | 1 captive screw on display-cable bracket |  |
| Display assembly | Palm-rest assembly | M2.5x3 | 4 |  |
| USB Type-C bracket | System board | M1.6x3 | 1 |  |
| USB Type-C bracket | System board | M1.6x2 | 1 |  |
| System board | Palm-rest assembly | M1.6x2.5 | 4 |  |

Table 1. Screw list(continued)

| Component | Secured to | Screw type | Quantity | Screw image |
|-------------------|--------------------|------------|-----------------|---|
| System board | Palm-rest assembly | M1.2x3 | 3 |  |
| System board | Palm-rest assembly | M1.2x4 | 1 captive screw |  |
| Keyboard assembly | Palm-rest assembly | M1.2x1.4 | 38 |  |
| Keyboard assembly | Palm-rest assembly | M1.2x1.6 | 10 |  |

Base cover

Removing the base cover

Prerequisites

1. Follow the procedure in [Before working inside your computer.](#)

About this task

The following images indicate the location of the base cover and provide a visual representation of the removal procedure.



8x
M2x4.5

1






Steps

1. Remove the eight Torx screws (M2x4.5) that secure the base cover to the palm-rest assembly.
2. Starting from the bottom-left corner, pry the base cover in the direction of the arrows to release it from the palm-rest assembly.

 **CAUTION:** Do not pull on or pry the base cover from the top as it may damage the base cover.

3. Hold both sides of the base cover and rotate from front to back to remove from palm rest assembly.

 **NOTE:** The pins at the bottom of the base cover for grounding the antennas and the audio board are fragile. Place the base cover on a clean surface to avoid damage to the pins.

Installing the base cover

Prerequisites

If you are replacing a component, remove the existing component before performing the installation procedure.

About this task

The following images indicate the location of the base cover and provide a visual representation of the installation procedure.





8x
M2x4.5

2



Steps

1. Align and secure the back of the base cover on the palm-rest assembly, and then snap the base cover into place.
2. Replace the eight Torx screws (M2x4.5) that secure the base cover to the palm-rest assembly.

Next steps

1. Follow the procedure in [After working inside your computer](#).

Battery

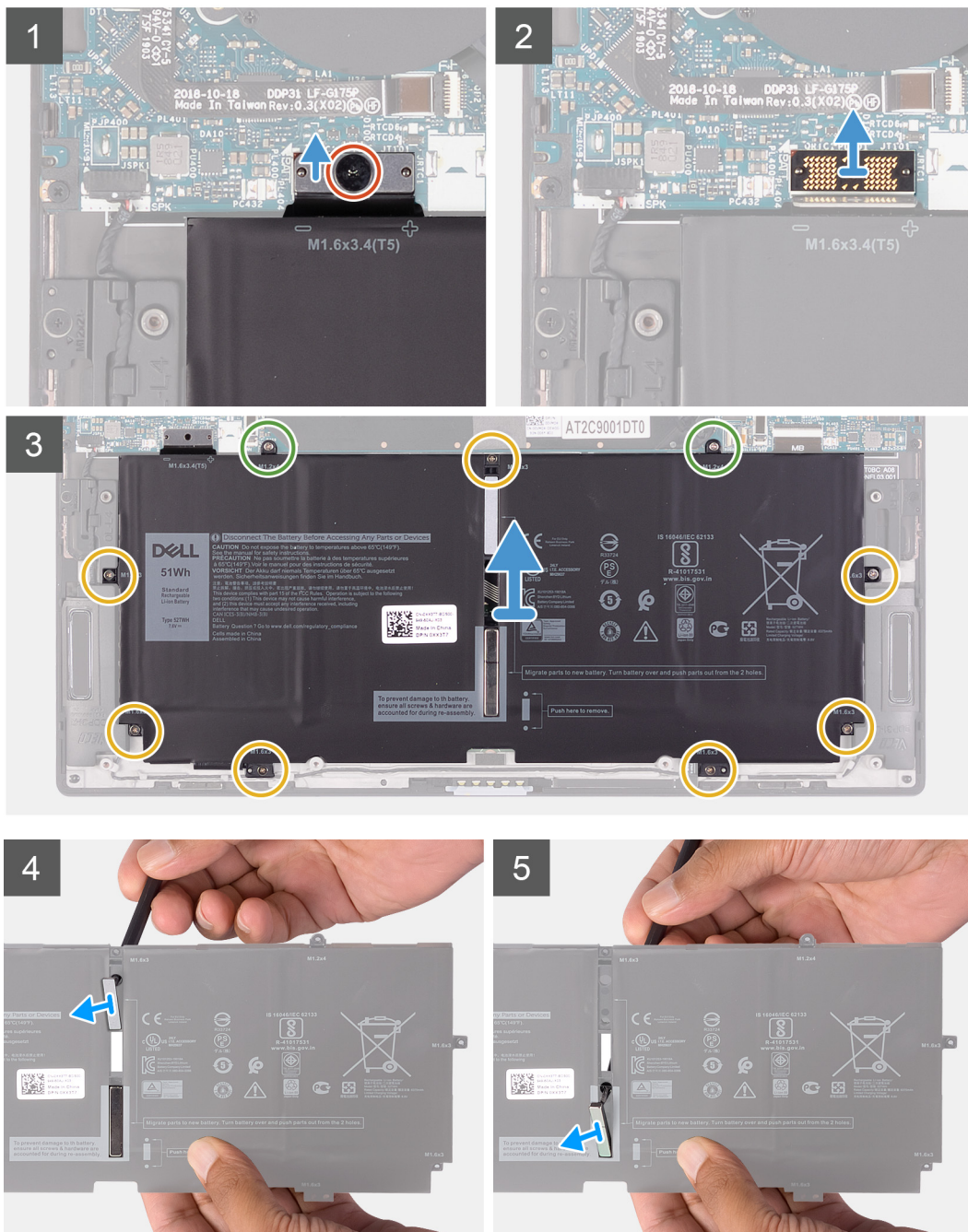
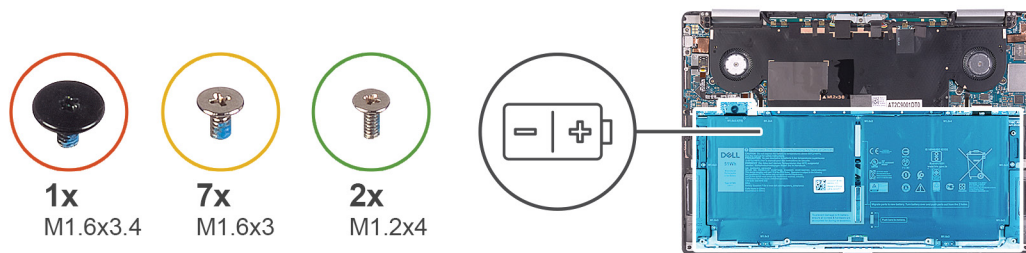
Removing the battery

Prerequisites

1. Follow the procedure in [Before working inside your computer](#).
2. Remove the [base cover](#).

About this task

The following image indicates the location of the battery and provides a visual representation of the removal procedure.



Steps

1. Remove the Torx 5 screw (M1.6x3.4) that secures the battery cable to the system board.
2. Disconnect the battery cable from the interposer board.

NOTE: Remove the interposer board immediately after disconnecting the battery cable to avoid misplacing it. Hold the edges of the interposer board to avoid damaging the pins on it.

NOTE: The interposer board is not polarity sensitive and both sides are compatible.

3. Remove the interposer board from the system board.
4. Remove the seven screws (M1.6x3) that secure the battery to the palm-rest assembly.
5. Remove the two screws (M1.2x4) that secure the battery to the system board.
6. Lift the battery off the palm-rest assembly.
7. Turn the battery over.
8. Using a plastic scribe, push to remove the magnet and the metal bar from the battery.

NOTE: Keep the magnet and the metal bar as they need to be installed on the new battery.

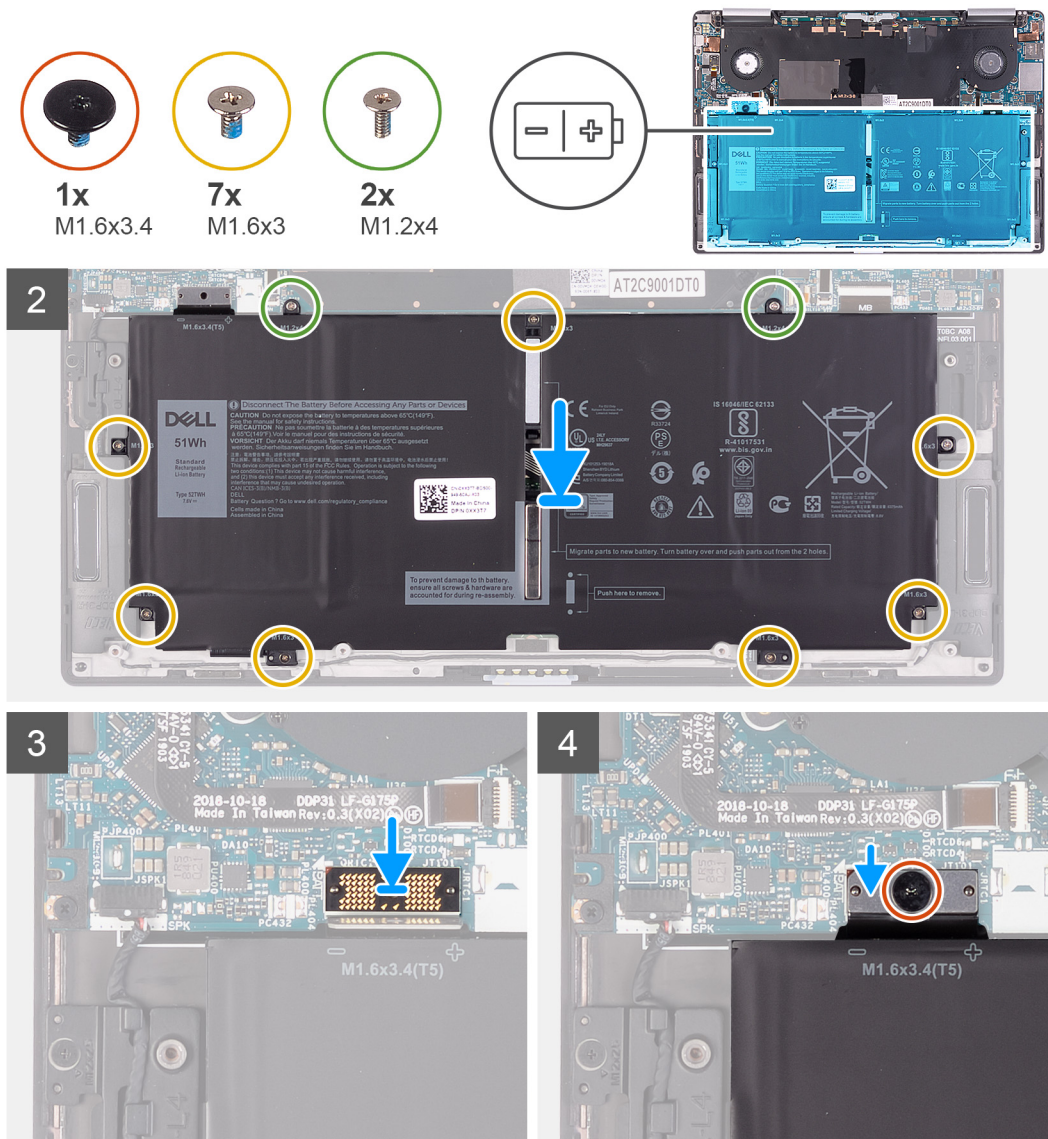
Installing the battery

Prerequisites

If you are replacing a component, remove the existing component before performing the installation procedure.

About this task

The following image indicates the location of the battery and provides a visual representation of the installation procedure.



Steps

1. Adhere the magnet and the metal bar to the battery.

 **NOTE:** Install the magnet and the metal bar from the faulty battery.

2. Align the screw holes on the battery with the screw holes on the system board and palm-rest assembly.
3. Replace the two screws (M1.2x4) that secure the battery to the system board.
4. Replace the seven screws (M1.6x3) that secure the battery to the palm-rest assembly.
5. Place the interposer board to the connector on the system board.

 **NOTE:** The interposer board is not polarity sensitive and both sides are compatible.

6. Connect the battery cable to the interposer board.
7. Replace the Torx 5 screw (M1.6x3.4) that secures the battery cable to the system board.

Next steps

1. Install the [base cover](#).
2. Follow the procedure in [After working inside your computer](#).

Display assembly

Removing the display assembly

Prerequisites

1. Follow the procedure in [Before working inside your computer](#).
2. Remove the [base cover](#).
3. Remove the [battery](#).

About this task

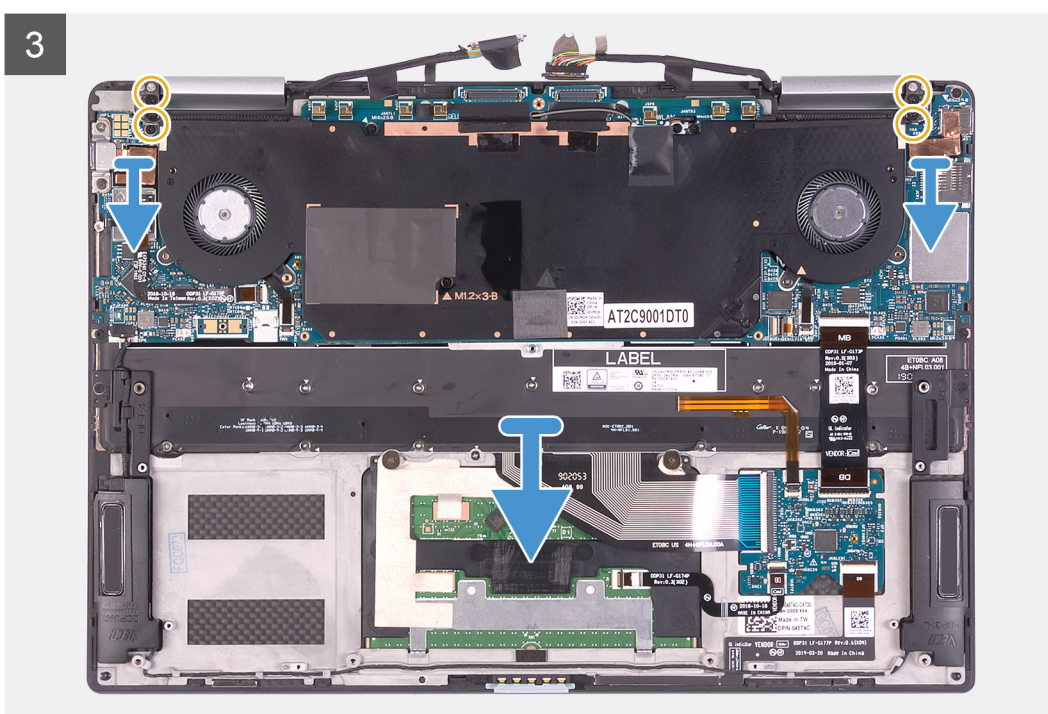
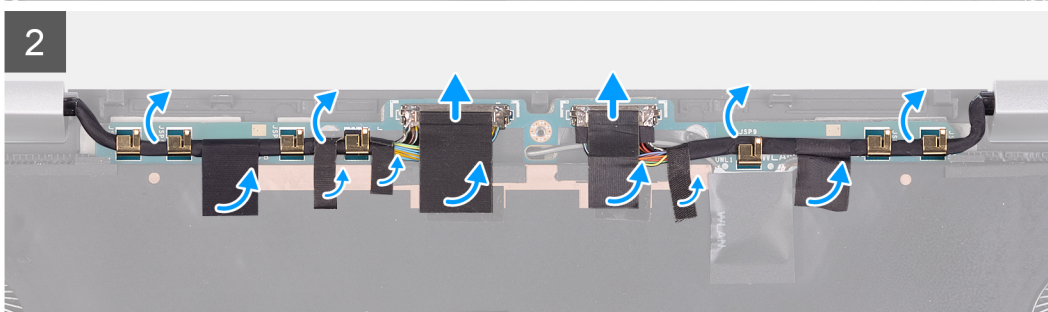
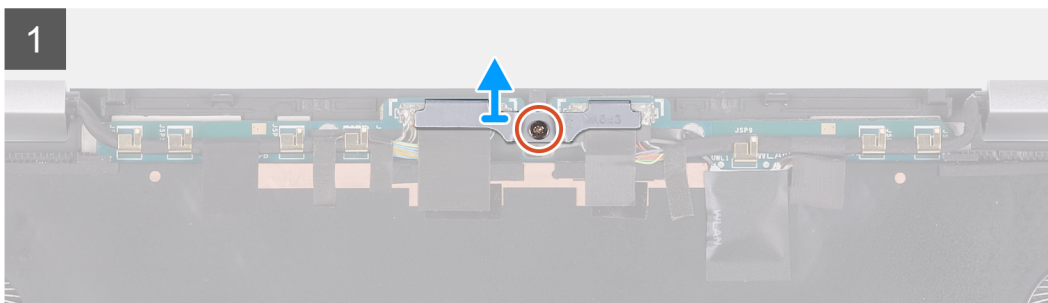
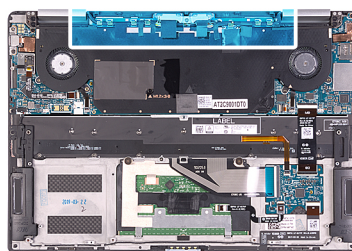
The following images indicate the location of display assembly and provide a visual representation of the removal procedure.



1x
M1.6x3



4x
M2.5x3



Steps

1. Loosen the captive screw (M1.6x3) that secures the display-cable bracket to the system board.
2. Lift the display-cable bracket off the system board.
3. Peel the tapes that secure the display cable and camera cable to the system board.
4. Using the tape as a pull tab, disconnect the display cable and camera cable from the system board.

5. Remove the display cable and camera cable from the routing guides on the system board.
6. Remove the four screws (M2.5x3) that secure the display hinges to the palm-rest assembly.
7. Slide the palm-rest assembly off the display assembly.



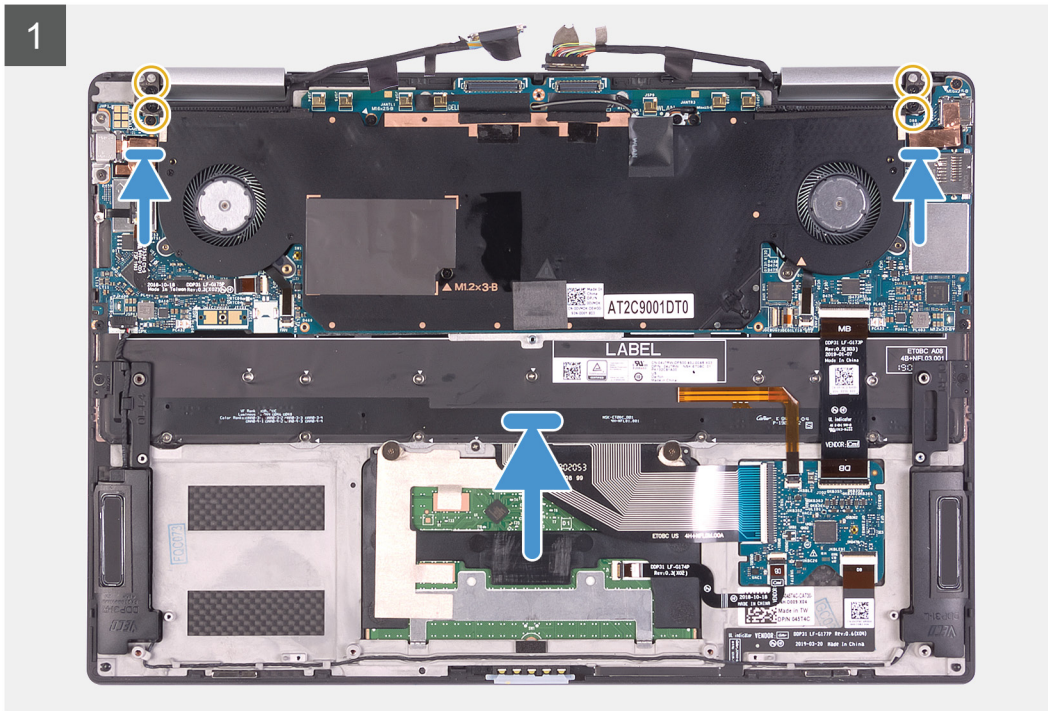
Installing the display assembly

Prerequisites

If you are replacing a component, remove the existing component before performing the installation procedure.

About this task

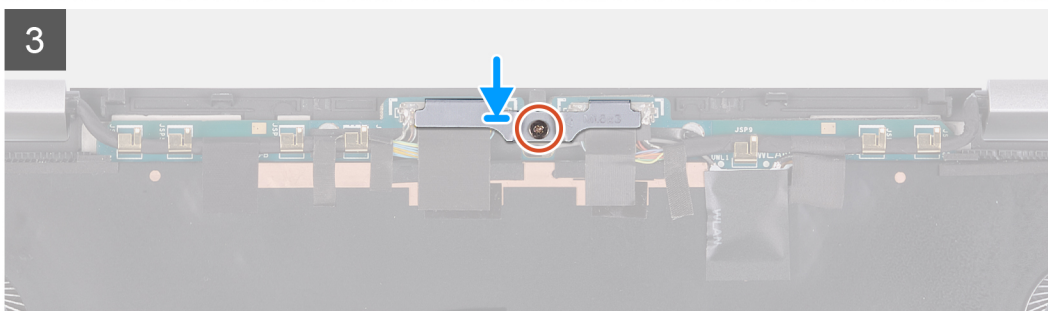
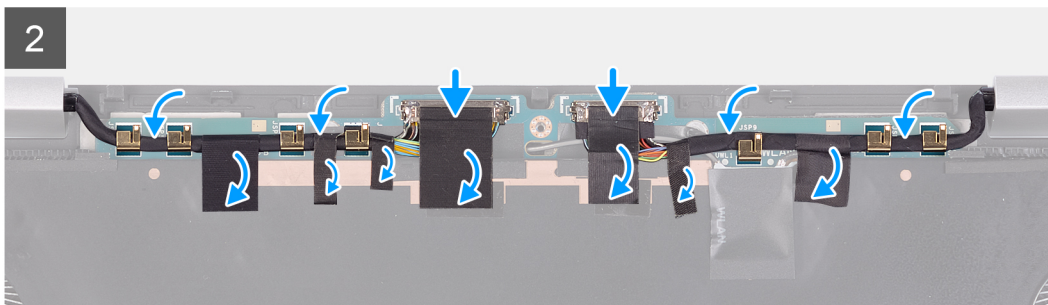
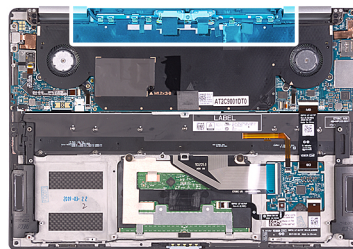
The following images indicate the location of display assembly and provide a visual representation of the installation procedure.



1x
M1.6x3



4x
M2.5x3



Steps

1. Slide the palm-rest assembly under the display assembly.
2. Align the screw holes on the palm-rest assembly with the screw holes on the display hinges.
3. Replace the four screws (M2.5x3) that secure the display hinges to the palm-rest assembly.
4. Route the display cable and camera cable through the routing guides on the system board.

5. Connect the display cable and camera cable to the system board.
6. Adhere the tapes that secure the display cable and camera cable to the system board.
7. Align and place the display-cable bracket on the system board.
8. Tighten the captive screw (M1.6x3) that secures the display-cable bracket to the system board.

Next steps

1. Install the [battery](#).
2. Install the [base cover](#).
3. Follow the procedure in [After working inside your computer](#).

Speakers

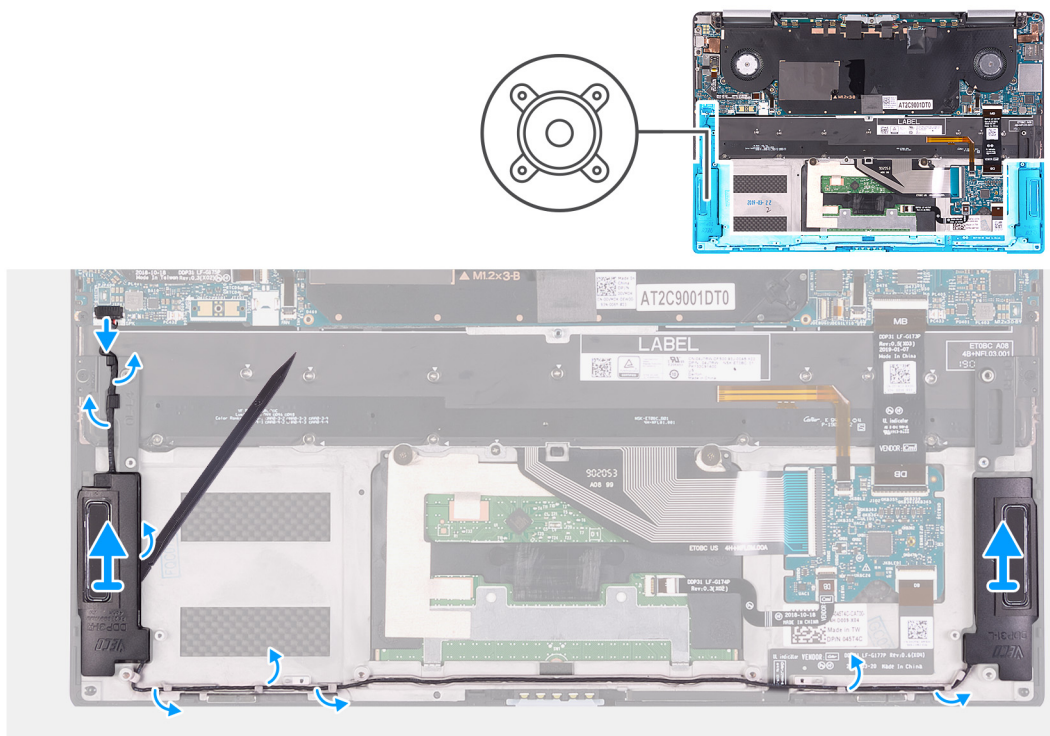
Removing the speakers

Prerequisites

1. Follow the procedure in [Before working inside your computer](#).
2. Remove the [base cover](#).
3. Remove the [battery](#).

About this task

The following image indicates the location of speakers and provides a visual representation of the removal procedure.



Steps

1. Disconnect the speaker cable from the system board.
2. Note the routing of the speaker cable and remove the speaker cable from the routing guides on the palm-rest assembly.
3. Using a plastic scribe, pry the speakers off the palm-rest assembly.

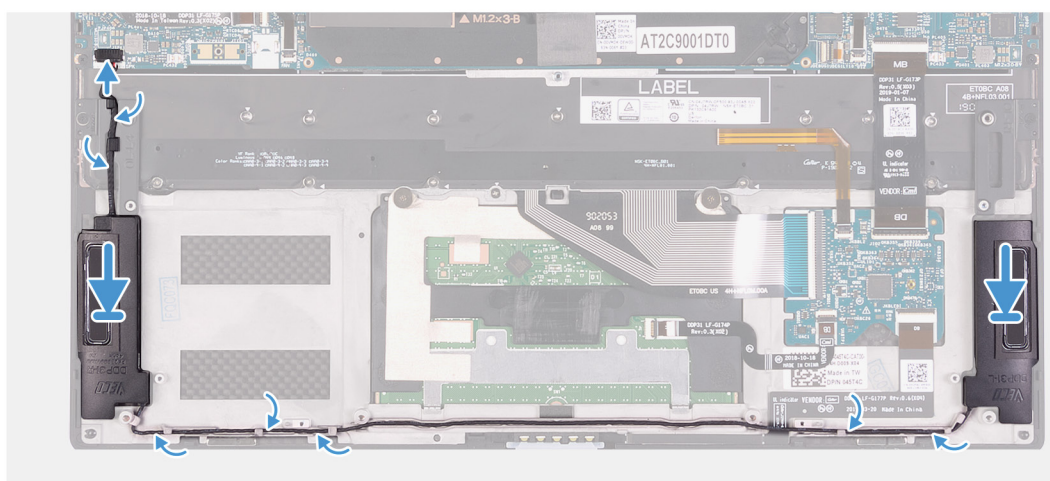
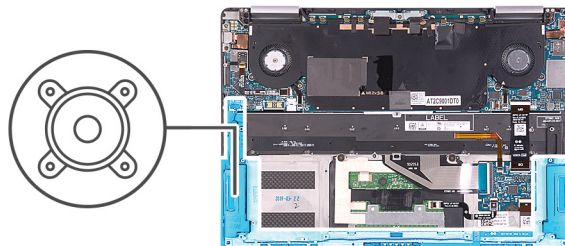
Installing the speakers

Prerequisites

If you are replacing a component, remove the existing component before performing the installation procedure.

About this task

The following image indicates the location of speakers and provides a visual representation of the installation procedure.



Steps

1. Slide the speakers into the slots on the palm-rest assembly.

NOTE: Ensure that there is no adhesive residue from the faulty speakers that are removed previously.

2. Route the speaker cable through the routing guides on the palm-rest and keyboard assembly.
3. Connect the speaker cable to the system board.

Next steps

1. Install the [battery](#).
2. Install the [base cover](#).
3. Follow the procedure in [After working inside your computer](#).

System-board assembly

Removing the system board

Prerequisites

1. Follow the procedure in [Before working inside your computer.](#)
2. Remove the [base cover.](#)
3. Remove the [battery.](#)

About this task

The following image indicates the connectors on your system board.

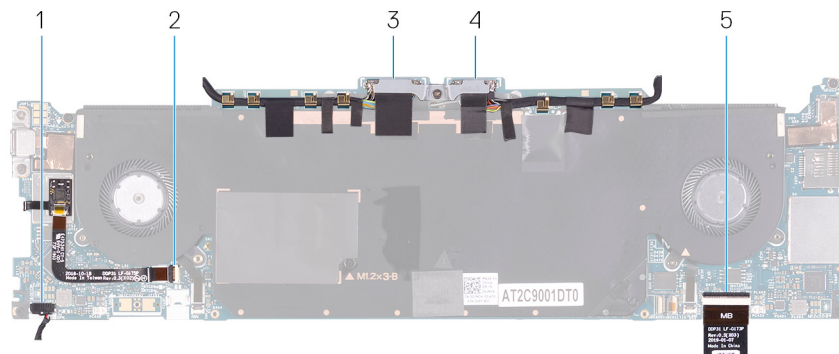


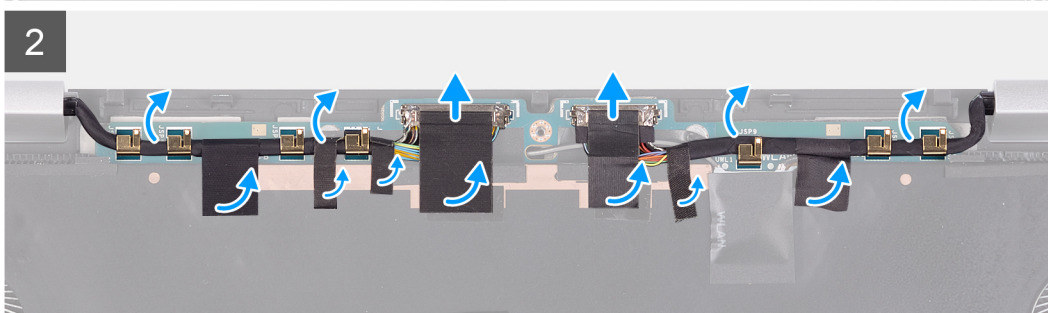
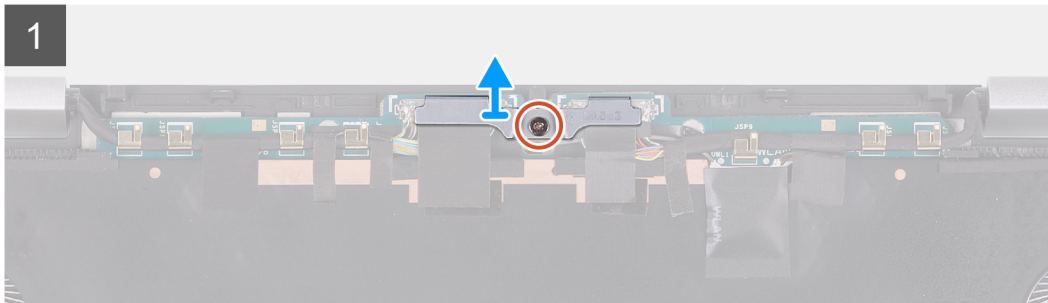
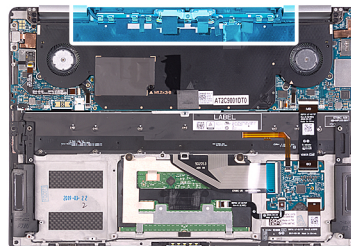
Figure 1. System-board connectors

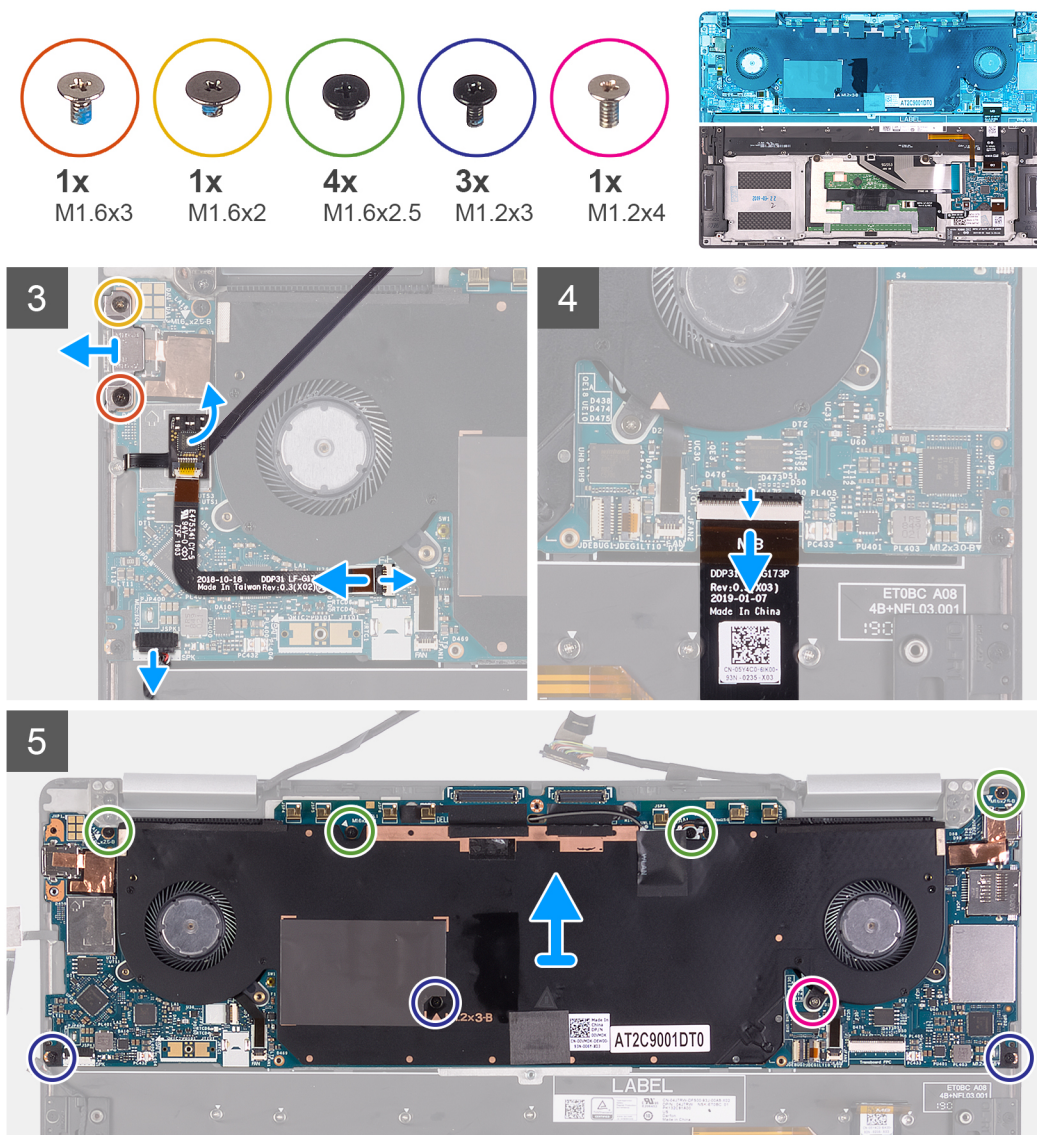
- | | |
|------------------------------------|-----------------------------|
| 1. Speaker cable | 2. Fingerprint-reader cable |
| 3. Display cable | 4. Camera cable |
| 5. Keyboard-controller board cable | |

The following images indicate the location of system board and provide a visual representation of the removal procedure.



1x
M1.6x3





Steps

1. Loosen the captive screw (M1.6x3) that secures the display-cable bracket to the system board.
2. Lift the display-cable bracket off the system board.
3. Peel the tapes that secure the display cable and camera cable to the system board.
4. Using the tape as a pull tab, disconnect the display cable and camera cable from the system board.
5. Remove the display cable and camera cable from the routing guides on the system board.
6. Remove the screw (M1.6x3) and the screw (M1.6x2) that secures the type-C bracket to the system board.

NOTE: The M1.6x2 screw has a bigger head than the M1.6x3 screw.

7. Lift the type-C bracket off the system board.
8. Disconnect the speaker cable from the system board.
9. Open the latch and disconnect the fingerprint-reader cable from the system board.
10. Peel off the fingerprint-reader daughter-board from the system board.
11. Open the latch and disconnect the keyboard-controller board cable from the system board.
12. Remove the four screws (M1.6x2.5), three screws (M1.2x3), and one captive screw (M1.2x4) that secure the system board to the palm-rest assembly.
13. Lift the system board off the palm-rest assembly.

Installing the system board

Prerequisites

If you are replacing a component, remove the existing component before performing the installation procedure.

About this task

The following image indicates the connectors on your system board.

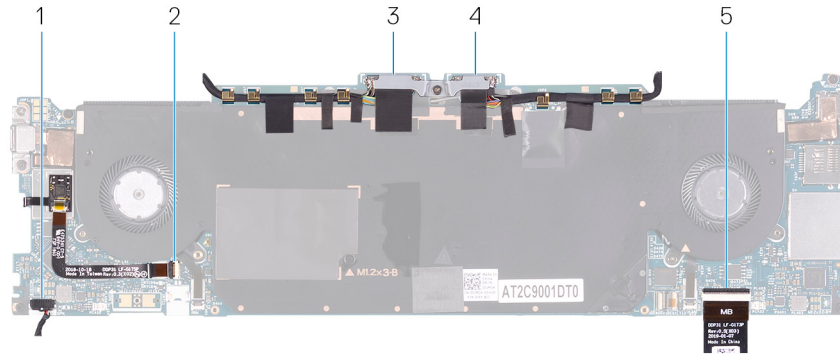
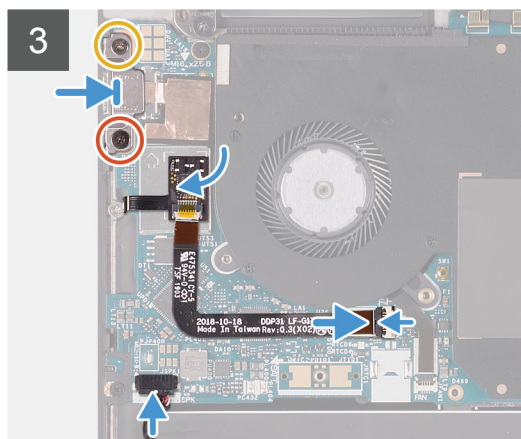
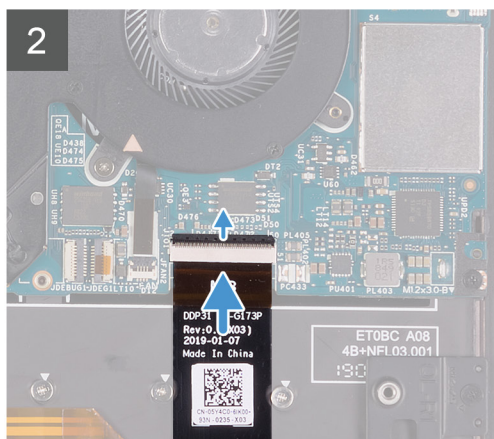
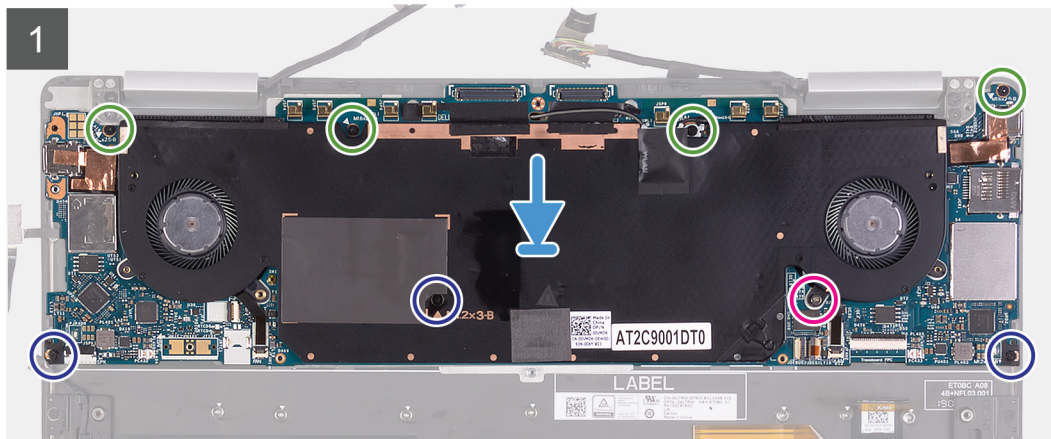
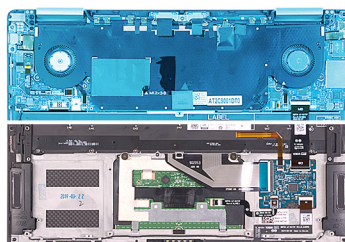
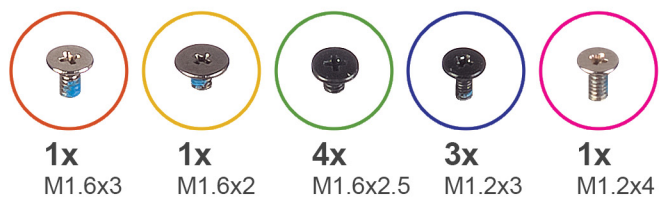


Figure 2. System-board connectors

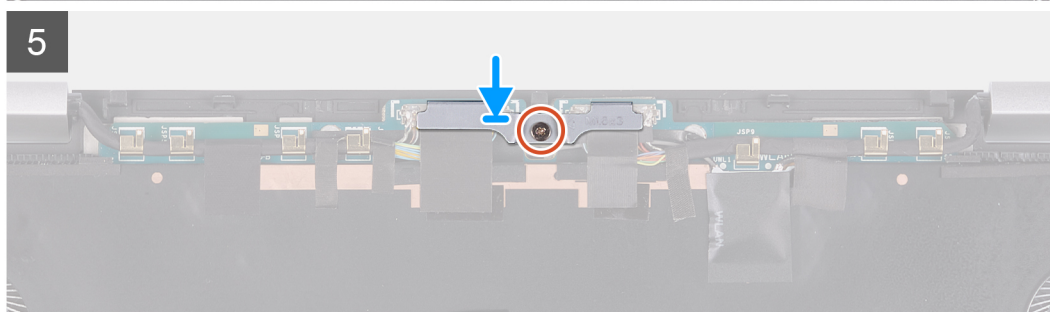
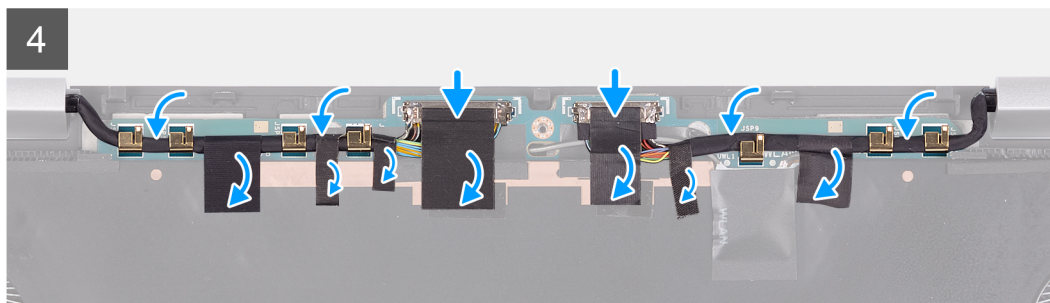
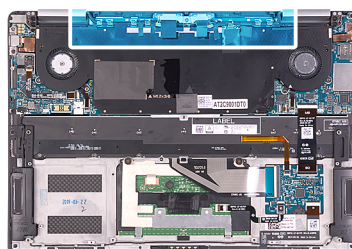
- | | |
|------------------------------------|-----------------------------|
| 1. Speaker cable | 2. Fingerprint-reader cable |
| 3. Display cable | 4. Camera cable |
| 5. Keyboard-controller board cable | |

The following images indicate the location of system board and provide a visual representation of the installation procedure.





1x
M1.6x3



Steps

1. Align the screw holes on the system board with the screw holes on the palm-rest assembly.
2. Replace the four screws (M2x4), three screws (M1.2x3), and one screw (M1.2x4) that secure the system board to the palm-rest assembly.
3. Connect the keyboard-controller board cable to the system board and close the latch to secure the cable.
4. Connect the speaker cable to the system board.
5. Adhere the fingerprint-reader board to the slot on the system board.
6. Connect the fingerprint-reader cable to the system board and close the latch to secure the cable.
7. Align the screw holes on the USB Type-C bracket to the screw holes on the system board.
8. Replace the screw (M1.6x3) and the screw (M1.6x2) that secures the USB Type-C port bracket to the system board.

NOTE: The M1.6x2 screw has a bigger head than the M1.6x3 screw.

9. Route the display cable and camera cable through the routing guides on the system board.
10. Connect the display cable and camera cable to the system board.
11. Adhere the tapes that secure the display cable and camera cable to the system board.
12. Align and place the display-cable bracket on the system board.
13. Tighten the captive screw (M1.6x3) that secures the display-cable bracket to the system board.

Next steps

1. Install the [battery](#).
2. Install the [base cover](#).
3. Follow the procedure in [After working inside your computer](#).

Keyboard assembly

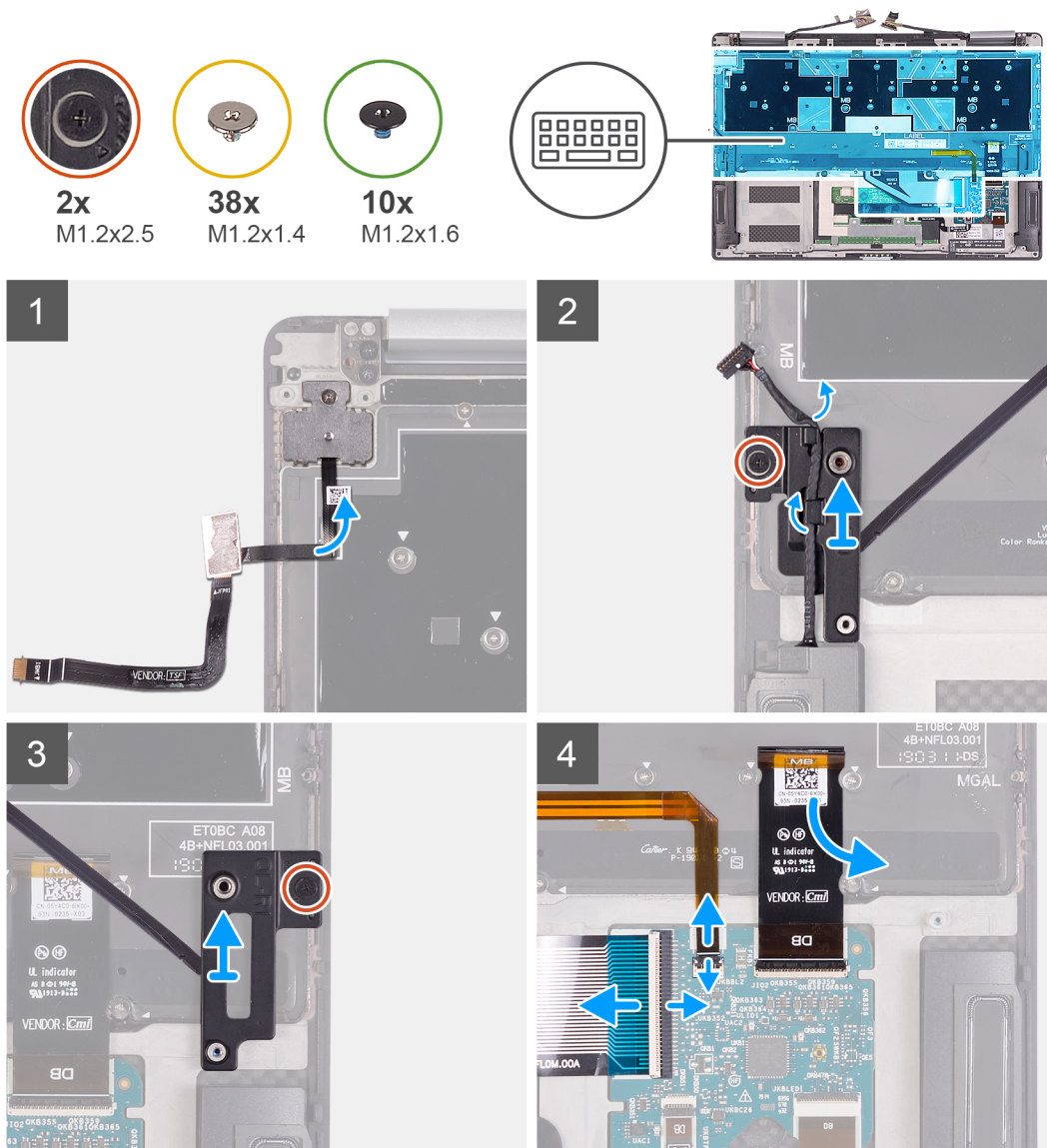
Removing the keyboard assembly

Prerequisites

1. Follow the procedure in [Before working inside your computer](#).
2. Remove the [base cover](#).
3. Remove the [battery](#).
4. Remove the [system-board assembly](#).

About this task

The following images indicate the location of keyboard assembly and provide a visual representation of the removal procedure.





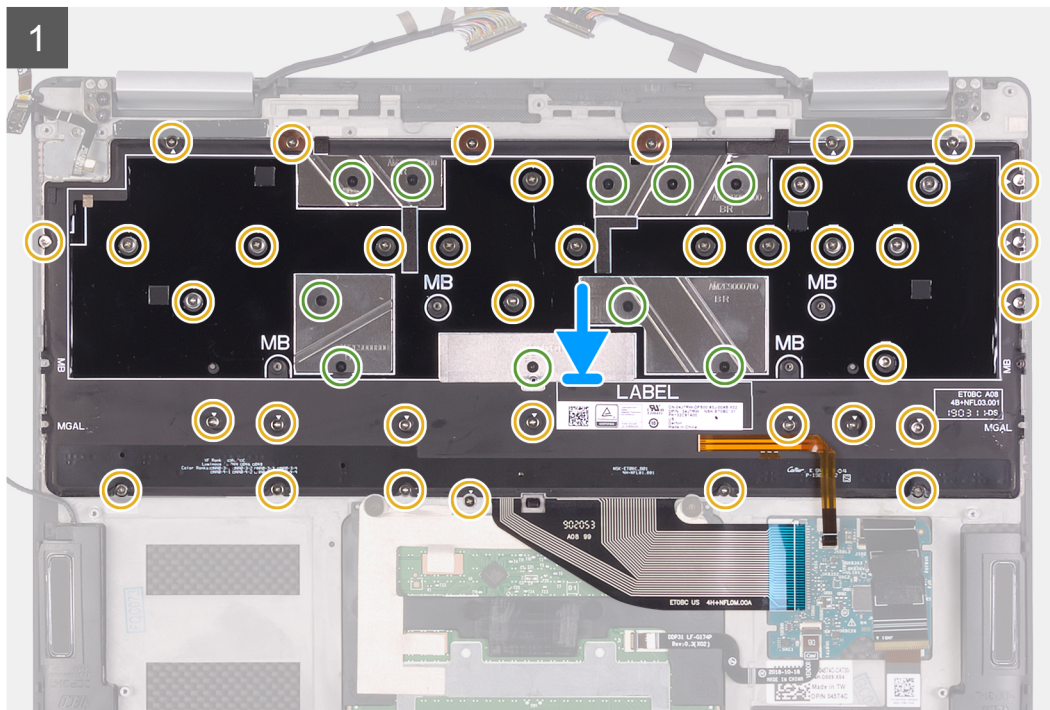
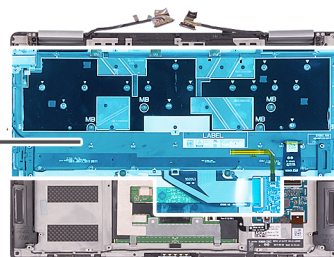
2x
M1.2x2.5

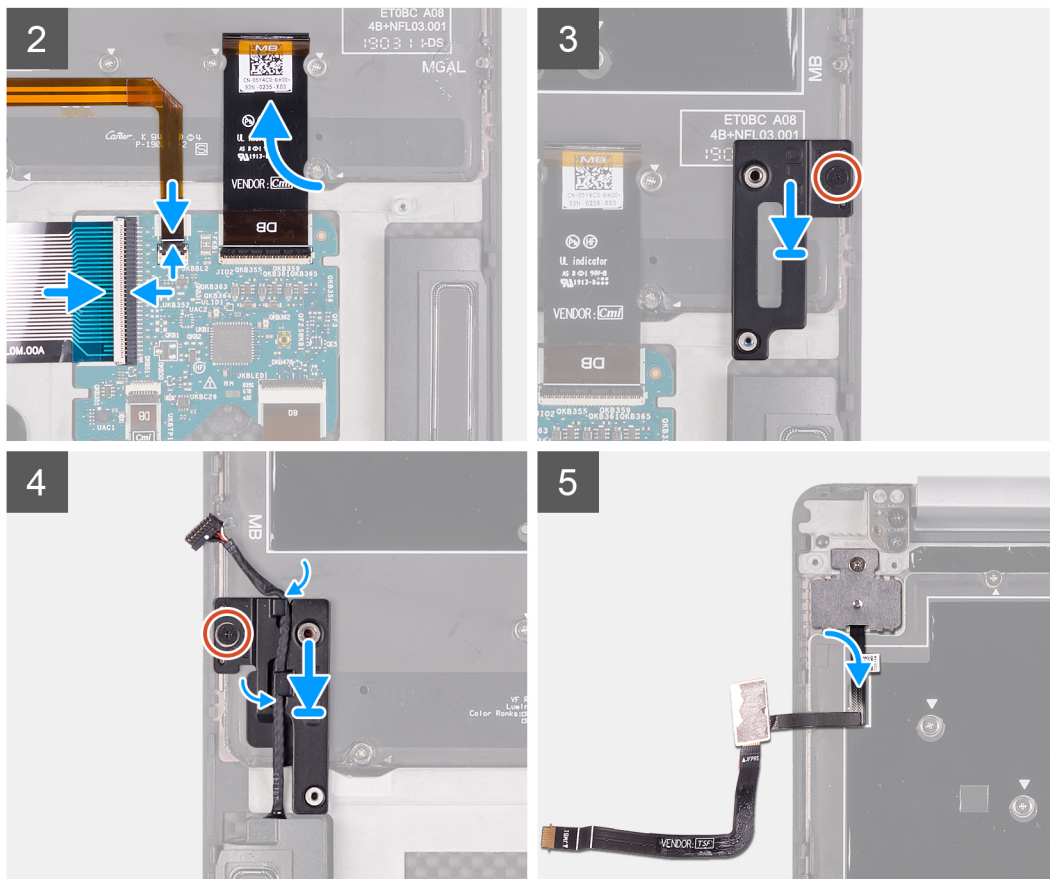


38x
M1.2x1.4



10x
M1.2x1.6





Steps

- Align the screw holes on the keyboard with the screw holes on the palm-rest assembly.
NOTE: Adhere the two conductive tapes on the keyboard, and then adhere the three copper foils on the palm-rest assembly to secure the keyboard assembly to the palm-rest assembly.
- Replace the 38 screws (M1.2x1.4) and ten screws (M1.2x1.6) that secure the keyboard to the palm-rest assembly.
NOTE: Do not install keyboard assembly screws into locations that are marked with MB. Those screw holes are reserved for system board screws.
- Adhere the keyboard controller board cable to the keyboard.
- Connect the keyboard cable and keyboard backlight cable to the keyboard controller board.
- Adhere the right keyboard bracket in the slots on the palm-rest assembly.
- Tighten the captive screw that secures the right keyboard bracket to the palm-rest assembly.
- Adhere the right keyboard bracket in the slots on the palm-rest assembly.
- Tighten the captive screw that secures the left keyboard bracket to the palm-rest assembly.
- Route the speaker cable through the routing guides on the left keyboard assembly.
- Adhere the fingerprint reader cable to the keyboard.

Next steps

- Install the [system-board assembly](#).
- Install the [battery](#).
- Install the [base cover](#).
- Follow the procedure in [After working inside your computer](#).

Palm-rest assembly

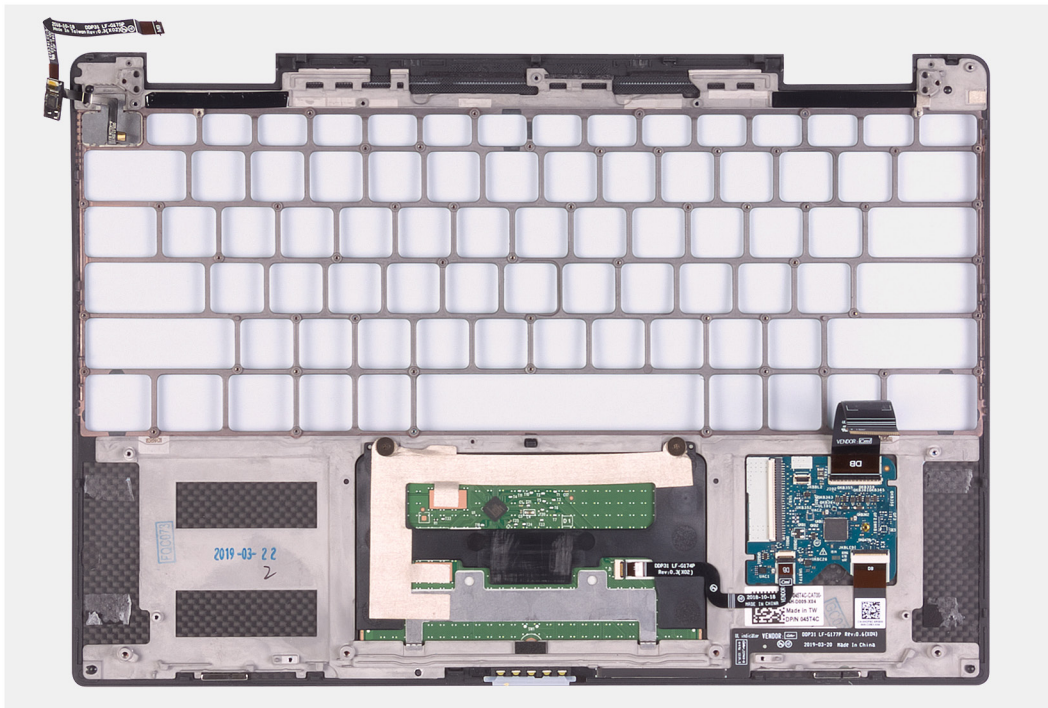
Removing the palm-rest and keyboard assembly

Prerequisites

1. Follow the procedure in [Before working inside your computer](#).
2. Remove the [base cover](#).
3. Remove the [battery](#).
4. Remove the [display assembly](#).
5. Remove the [speakers](#).
6. Remove the [system-board assembly](#).
7. Remove the [keyboard assembly](#).

About this task

The following image indicates the palm-rest assembly and provides a visual representation of the removal procedure.



Steps

After performing the steps in the prerequisites, we are left with the palm-rest assembly.

NOTE: Keep the power-button bracket if you need to replace the palm-rest assembly as it is reusable.

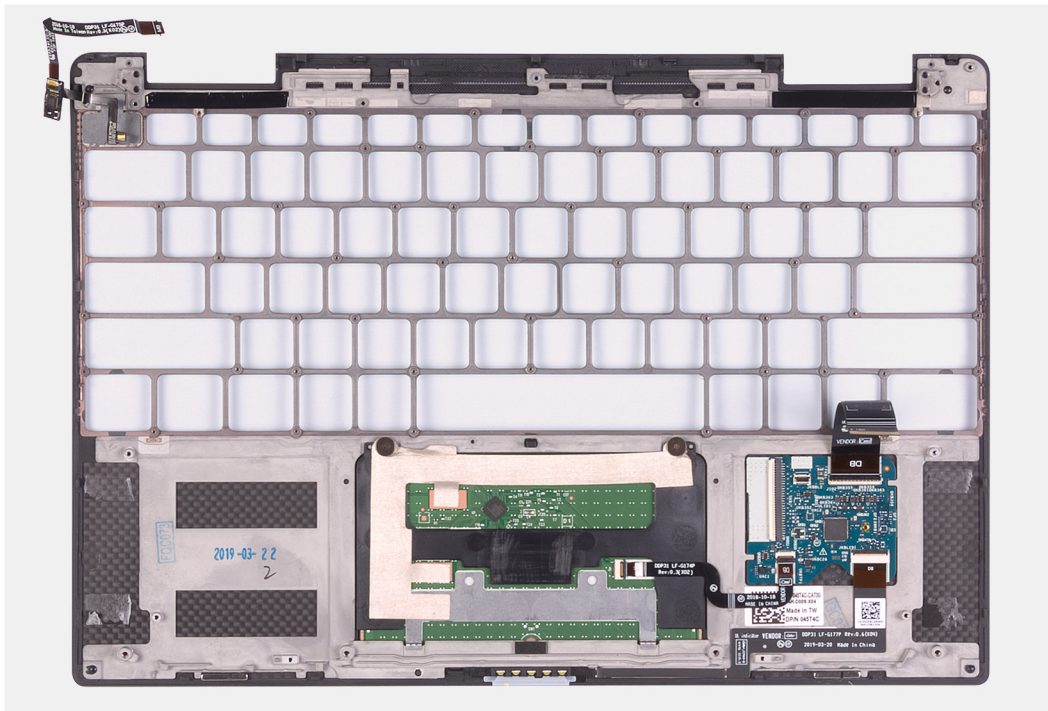
Installing the palm-rest assembly

Prerequisites

If you are replacing a component, remove the existing component before performing the installation procedure.

About this task

The following image indicates the palm-rest assembly and provides a visual representation of the installation procedure.



Steps

Place the palm-rest assembly on a flat surface.

NOTE: If you are installing components to a new palm-rest assembly, use the power-button bracket from the previous palm-rest assembly.

Next steps

1. Install the [keyboard assembly](#).
2. Install the [system-board assembly](#).
3. Install the [speakers](#).
4. Install the [display assembly](#).
5. Install the [battery](#).
6. Install the [base cover](#).
7. Follow the procedure in [After working inside your computer](#).

Device drivers

Intel Chipset Software Installation Utility

In the Device Manager, check if the chipset driver is installed.

Install the Intel chipset updates from www.dell.com/support.

Video drivers

In the Device Manager, check if the video driver is installed.

Install the video driver update from www.dell.com/support.

Intel Serial IO driver

In the Device Manager, check if the Intel Serial IO driver is installed.

Install the driver updates from www.dell.com/support.

Intel Trusted Execution Engine Interface

In the Device Manager, check if the Intel Trusted Execution Engine Interface driver is installed.

Install the driver update from www.dell.com/support.

Intel Virtual Button driver

In the Device Manager, check if the Intel Virtual Button driver is installed.

Install the driver updates from www.dell.com/support.

Wireless and Bluetooth drivers

In the Device Manager, check if the network card driver is installed.

Install the driver updates from www.dell.com/support.

In the Device Manager, check if the Bluetooth driver is installed.

Install the driver updates from www.dell.com/support.

System setup

CAUTION: Unless you are an expert computer user, do not change the settings in the BIOS Setup program. Certain changes can make your computer work incorrectly.

NOTE: Before you change BIOS Setup program, it is recommended that you write down the BIOS Setup program screen information for future reference.

Use the BIOS Setup program for the following purposes:

- Get information about the hardware installed in your computer, such as the amount of RAM and the size of the hard drive.
- Change the system configuration information.
- Set or change a user-selectable option, such as the user password, type of hard drive installed, and enabling or disabling base devices.

Topics:

- [BIOS overview](#)
- [Entering BIOS setup program](#)
- [Navigation keys](#)
- [Boot Sequence](#)
- [System setup options](#)
- [System and setup password](#)

BIOS overview

The BIOS manages data flow between the computer's operating system and attached devices such as hard disk, video adapter, keyboard, mouse, and printer.

Entering BIOS setup program

Steps

1. Turn on (or restart) your computer.
2. During POST, when the DELL logo is displayed, watch for the F2 prompt to appear, and then press F2 immediately.

NOTE: The F2 prompt indicates that the keyboard is initialized. This prompt can appear very quickly, so you must watch for it, and then press F2. If you press F2 before the F2 prompt, this keystroke is lost. If you wait too long and the operating system logo appears, continue to wait until you see the desktop. Then, turn off your computer and try again.

Navigation keys

NOTE: For most of the System Setup options, changes that you make are recorded but do not take effect until you restart the system.

| Keys | Navigation |
|-------------------|--|
| Up arrow | Moves to the previous field. |
| Down arrow | Moves to the next field. |
| Enter | Selects a value in the selected field (if applicable) or follow the link in the field. |
| Spacebar | Expands or collapses a drop-down list, if applicable. |

| Keys | Navigation |
|------|---|
| Tab | Moves to the next focus area. |
| Esc | Moves to the previous page until you view the main screen. Pressing Esc in the main screen displays a message that prompts you to save any unsaved changes and restarts the system. |

Boot Sequence

Boot Sequence allows you to bypass the System Setup–defined boot device order and boot directly to a specific device (for example: optical drive or hard drive). During the Power-on Self Test (POST), when the Dell logo appears, you can:

- Access System Setup by pressing F2 key
- Bring up the one-time boot menu by pressing F12 key

The one-time boot menu displays the devices that you can boot from including the diagnostic option. The boot menu options are:

- Removable Drive (if available)
- STXXXX Drive (if available)

 **NOTE:** XXX denotes the SATA drive number.

- Optical Drive (if available)
- SATA Hard Drive (if available)
- Diagnostics

The boot sequence screen also displays the option to access the System Setup screen.

System setup options


 **NOTE:** Depending on this computer and its installed devices, the items that are listed in this section may or may not be displayed.

Table 2. System setup options—System information menu

| Overview | | |
|------------------------------|---|--|
| BIOS Version | Displays the BIOS version number. | |
| Service Tag | Displays the Service Tag of the computer. | |
| Asset Tag | Displays the Asset Tag of the computer. | |
| Ownership Tag | Displays the ownership tag of the computer. | |
| Manufacture Date | Displays the manufacture date of the computer. | |
| Ownership Date | Displays the ownership date of the computer. | |
| Express Service Code | Displays the express service code of the computer. | |
| Ownership Tag | Displays the ownership tag of the computer. | |
| Signed Firmware Update | Displays whether the signed firmware update is enabled. | |
| Battery | Displays the battery health information. | |
| Primary | Displays the primary battery. | |
| Battery Level | Displays the battery level. | |
| Battery State | Displays the battery state. | |
| Health | Displays the battery health. | |
| AC Adapter | Displays whether an AC adapter is installed. | |
| Processor Information | | |
| Processor Type | Displays the processor type. | |
| Maximum Clock Speed | Displays the maximum processor clock speed. | |

Table 2. System setup options—System information menu(continued)

| Overview | | |
|-------------------------------|--|---|
| Core Count | | Displays the number of cores on the processor. |
| Processor L2 Cache | | Displays the processor L2 Cache size. |
| Processor ID | | Displays the processor identification code. |
| Processor L3 Cache | | Displays the processor L3 Cache size. |
| Current Clock Speed | | Displays the current processor clock speed. |
| Minimum Clock Speed | | Displays the minimum processor clock speed. |
| Microcode Version | | Displays the microcode version. |
| Intel Hyper-Threading Capable | | Displays whether the processor is Hyper-Threading (HT) capable. |
| 64-Bit Technology | | Displays whether 64-bit technology is used. |
| Memory Information | | |
| Memory Installed | | Displays the total computer memory installed. |
| Memory Available | | Displays the total computer memory available. |
| Memory Speed | | Displays the memory speed. |
| Memory Channel Mode | | Displays single or dual channel mode. |
| Memory Technology | | Displays the technology that is used for the memory. |
| Device Information | | |
| Video Controller | | Displays the integrate graphics information of the computer. |
| Video BIOS Version | | Displays the video BIOS version of the computer. |
| Video Memory | | Displays the video memory information of the computer. |
| Panel Type | | Displays the Panel Type of the computer. |
| Native Resolution | | Displays the native resolution of the computer. |
| Audio Controller | | Displays the audio controller information of the computer. |
| Wi-Fi Device | | Displays the wireless device information of the computer. |
| Bluetooth Device | | Displays the Bluetooth device information of the computer. |

Table 3. System setup options—Boot options menu

| Boot options | | |
|---------------------------------|--|---|
| Advanced Boot Options | | |
| Enable UEFI Network Stack | | Enables or disables UEFI Network Stack. Default: OFF. |
| Boot Mode | | |
| Boot Mode: UEFI only | | Displays the boot mode of this computer. |
| Enable Boot Devices | | Enables or disables boot devices for this computer. |
| Boot Sequence | | Displays the boot sequence. |
| BIOS Setup Advanced Mode | | Enables or disables advanced BIOS settings. Default: ON. |
| UEFI Boot Path Security | | Enables or disables the system to prompt the user to enter the Admin password when booting a UEFI boot path from the F12 boot menu. Default: Always Except Internal HDD. |

Table 4. System setup options—System Configuration menu


| System Configuration | |
|--|--|
| Date/Time | |
| Date | Sets the computer date in MM/DD/YYYY format. Changes to the date take effect immediately. |
| Time | Sets the computer time in HH/MM/SS 24-hour format. You can switch between 12-hour and 24-hour clock. Changes to the time take effect immediately. |
| Storage Interface | |
| Port Enablement | Enables the selected onboard drives. |
| SATA Operation | |
| | Configures operating mode of the integrated SATA hard drive controller. Default: RAID. SATA is configured to support RAID (Intel Rapid Restore Technology). |
| Drive Information | |
| | Displays the information of various onboard drives. |
| Enable Audio | |
| | Enables or disables all integrated audio controller. Default: ON. |
| Enable Microphone | Enables or disables microphone. Default: ON. |
| Enable Internal Speaker | Enables or disables internal speaker. Default: ON. |
| USB Configuration | |
| Enable Boot Support | Enables or disables booting from USB mass storage devices such as external hard drive, optical drive, and USB drive. Default: ON. |
| Enable External USB Ports | Enables or disables USB ports to be functional in an operating system environment. Default: ON. |
| Enable Thunderbolt Technology Support | Enables or disables Thunderbolt Technology Support. Default: ON. |
| Enable Thunderbolt Boot Support | Enables or disables Thunderbolt Boot Support. Default: OFF. |
| Miscellaneous Devices | |
| Enable Camera | Enables or disables the camera. Default: ON. |
| Touchscreen | Enables or disables the touchscreen for the operating system.  NOTE: Touchscreen will always work in the BIOS setup irrespective of this setting. Default: ON. |
| Enable Fingerprint Reader Device | Enables or disables the Fingerprint Reader Device. Default: ON. |
| Enable Fingerprint Reader Single Sign On | Enables or disables the Fingerprint Reader Device's Single Sign On capability. Default: ON. |
| Enable MediaCard | |
| | Enables to switch all media cards On/Off or set the media card to read-only state. Default: Enable Secure Digital (SD) Card. |
| Keyboard Illumination | |
| | Configures the operating mode of the keyboard illumination feature. |

Table 4. System setup options—System Configuration menu(continued)

| System Configuration | |
|--|---|
| Keyboard Backlight Timeout on AC | <p>Default: Bright. Enable the keyboard illumination feature at 100% brightness level.</p> <p>Configures the timeout value for the keyboard when an AC adapter is connected to the computer. The keyboard backlight timeout value is only effect when the backlight is enabled.</p> <p>Default: 10 seconds.</p> |
| Keyboard Backlight Timeout on Battery | <p>Configures the timeout value for the keyboard when the computer is running on battery. The keyboard backlight timeout value is only effect when the backlight is enabled.</p> <p>Default: 10 seconds.</p> |

Table 5. System setup options—Video menu

| Video | |
|-----------------------------|---|
| LCD Brightness | |
| Brightness on battery power | Sets the screen brightness when the computer is running on battery power. |
| Brightness on AC power | Sets the screen brightness when the computer is running on AC power. |

Table 6. System setup options—Security menu

| Security | |
|--------------------------------------|--|
| Enable Admin Setup Lockout | <p>Enables or disables the user from entering BIOS Setup when an Admin Password is set.</p> <p>Default: OFF.</p> |
| Password Bypass | <p>Bypass the System (Boot) Password and the internal hard drive password prompts during a system restart.</p> <p>Default: Disabled.</p> |
| Enable Non-Admin Password Changes | <p>Enables or disables the user to change the system and hard drive password without the need for admin password.</p> <p>Default: ON.</p> |
| Non-Admin Setup Changes | |
| Allow Wireless Switch Changes | <p>Enables or disables changes to the setup option when an Administrator password is set.</p> <p>Default: OFF.</p> |
| Enable UEFI Capsule Firmware Updates | <p>Enables or disables BIOS updates through UEFI capsule update packages.</p> |
| Absolute | <p>Enables, disables or permanently disable the BIOS module interface of the optional Absolute Persistence Module service from Absolute Software.</p> <p>Default: Enable Absolute.</p> |
| TPM 2.0 Security On | <p>Select whether or not the Trusted Platform Model (TPM) is visible to the OS.</p> <p>Default: ON.</p> |
| PPI Bypass for Enable Commands | <p>Enables or disables the OS to skip BIOS Physical Presence Interface (PPI) user prompts when issuing TPM PPI enabled and activate commands.</p> <p>Default: OFF.</p> |
| PPI Bypass for Disable Commands | <p>Enables or disables The OS to skip BIOS PPI user prompts when issuing TPM PPI Disable and Deactivate commands.</p> <p>Default: OFF.</p> |

Table 6. System setup options—Security menu(continued)


| Security | |
|--------------------------------|---|
| PPI Bypass for Clear Commands | Enables or disables the operating system to skip BIOS Physical Presence Interface (PPI) user prompts when issuing the Clear command. Default: OFF. |
| Attestation Enables | Enables to control whether the TPM Endorsement Hierarchy is available to the OS. Disabling this setting restricts the ability to use the TPM for signature operations. Default: ON. |
| Key Storage Enable | Enables to control whether the TPM Endorsement Hierarchy is available to the OS. Disabling this setting restricts the ability to use the TPM for storing owner data. Default: ON. |
| SHA-256 | Enables or disables the BIOS and the TPM to use the SHA-256 hash algorithm to extend measurements into the TPM PCRs during BIOS boot. Default: ON. |
| Clear | Enables or disables the computer to clear the PTT owner information, and returns the PTT to the default state. Default: OFF. |
| TPM State | Enables or disables the TPM. This is the normal operating state for the TPM when you want to use its complete array of capabilities. Default: Enabled. |
| Intel SGX | Enables or disables the Intel Software Guard Extensions (SGX) to provide a secured environment for running code/storing sensitive information. Default: Software Control |
| SMM Security Mitigation | Enables or disables additional UEFI SMM Security Mitigation protections. Default: OFF.  NOTE: This feature may cause compatibility issues or loss of functionality with some legacy tools and applications. |
| Enable Strong Passwords | Enables or disables strong passwords. Default: OFF. |
| Password Configuration | Control the minimum and maximum number of characters that are allowed for Admin and System passwords. |
| Admin Password | Sets, Changes, or deletes the administrator (admin) password (sometimes called the "setup" password). |
| System Password | Sets, Changes, or deletes the system password. |
| Enable Master Password Lockout | Enables or disables the master password support. Default: OFF. |

Table 7. System setup options—Secure Boot menu


| Secure Boot | |
|--------------------|--|
| Enable Secure Boot | Enables or disables the computer to boot using only validated boot software. Default: OFF.  NOTE: For Secure Boot to be enabled, the computer needs to be in UEFI boot mode and the Enable Legacy Option ROMs option needs to be turned off. |

Table 7. System setup options—Secure Boot menu(continued)

| Secure Boot | |
|------------------|---|
| Secure Boot Mode | <p>Selects the Secure Boot operation mode.</p> <p>Default: Deployed Mode.</p> <p>NOTE: Deployed Mode should be selected for normal operation of Secure Boot.</p> |

Table 8. System setup options—Expert Key Management menu

| Expert Key Management | |
|----------------------------|---|
| Enable Custom Mode | <p>Enables or disables the keys in the PK, KEK, db, and dbx security key databases to be modified.</p> <p>Default: OFF.</p> |
| Custom Mode Key Management | <p>Selects the custom values for expert key management.</p> <p>Default: PK.</p> |

Table 9. System setup options—Performance menu

| Performance | |
|----------------------------------|---|
| Intel Hyper-Threading Technology | <p>Enables or disables the Intel Hyper-Threading Technology to use processor resources more efficiently.</p> <p>Default: ON.</p> |
| Intel SpeedStep | <p>Enables or disables the Intel SpeedStep Technology to dynamically adjust processor voltage and core frequency, decreasing average power consumption and heat production.</p> <p>Default: ON.</p> |
| Intel TurboBoost Technology | <p>Enabled or disabled the Intel TurboBoost mode of the processor. If enabled, the Intel TurboBoost driver increases the performance of the CPU or graphics processor.</p> <p>Default: ON.</p> |
| Multi-Core Support | <p>Changes the number of CPU cores available to the operating system. The default value is set to the maximum number of cores.</p> <p>Default: All Cores.</p> |
| Enable C-State Control | <p>Enables or disables the CPU's ability to enter and exit low-power states.</p> <p>Default: ON.</p> |

Table 10. System setup options—Power Management menu

| Power Management | |
|------------------------------|--|
| Wake on AC | <p>Enables the computer to turn on and go to boot when AC power is supplied to the computer.</p> <p>Default: OFF.</p> |
| Wake on Dell USB-C Dock | <p>Enables connecting a Dell USB-C Dock to wake the computer from Standby.</p> <p>Default: ON.</p> |
| Auto on Time | <p>Enables the computer to automatically power on for defined days and times.</p> <p>Default: Disabled. The system will not automatically power up.</p> |
| Battery Charge Configuration | <p>Enables the computer to run on battery during power usage hours. Use the below options to prevent AC power usage between certain times of each day.</p> |

Table 10. System setup options—Power Management menu(continued)

Power Management

| | |
|--|--|
| | Default: Adaptive. Battery settings are adaptively optimized based on your typical battery usage pattern. |
| Enable Advanced Battery Charge Configuration | Enables Advanced Battery Charge Configuration from the beginning of the day to a specified work period. Advanced Battery Charged maximizes battery health while still supporting heavy use during the work day. Default: OFF. |
| Block Sleep | Blocks the computer from entering Sleep (S3) mode in the operating system. Default: OFF. NOTE: If enabled, the computer will not go to sleep, Intel Rapid Start will be disabled automatically, and the operating system power option will be blank if it was set to Sleep. |
| Peak Shift | Enables the computer to run on battery during peak power usage hours. Default: OFF. |
| Wireless Radio Control | Enables to sense the connection of the computer to a wired network and subsequently disable the selected wireless radios (WLAN and/or WWAN). Upon disconnection from the wired network, the selected wireless radios are re-enabled. Default: OFF. |
| Wake on LAN | Enables or disables the computer to turn on by a special LAN signal. Default: Disabled. |
| Intel Speed Shift Technology | Enables or disables the Intel Speed Shift Technology support. Setting this option to enable allows the operating system to select the appropriate processor performance automatically. Default: ON. |
| Lid Switch | Enables the computer to power up from the off state whenever the lid is opened. Default: ON. |

Table 11. System setup options—Wireless menu

| Wireless | |
|-------------------------------|--|
| Wireless Device Enable | Enable or disable internal WLAN/Bluetooth devices. |
| WLAN | Default: ON. |
| Bluetooth | Default: ON. |

Table 12. System setup options—POST Behavior menu

POST Behavior

| | |
|-------------------------|---|
| Numlock Enable | Enables or disables Numlock when the computer boots. Default: ON. |
| Enable Adapter Warnings | Enables the computer to display adapter warning messages during boot. Default: ON. |
| Extend BIOS POST Time | Configures the BIOS POST (Power-On Self-Test) load time. Default: 0 seconds. |
| Fastboot | Configures the speed of the UEFI boot process. |

Table 12. System setup options—POST Behavior menu(continued)

| POST Behavior | |
|--------------------------|--|
| | Default: Thorough. Performs complete hardware and configuration initialization during boot. |
| Fn Lock Options | Enables or disables the Fn lock mode. Default: ON. |
| Lock Mode | Default: Lock Mode Secondary. Lock Mode Secondary = If this option is selected, the F1-F12 keys scan the code for their secondary functions. |
| Full Screen Logo | Enabled or disabled the computer to display full screen logo if the image match screen resolution. Default: OFF. |
| Warnings and Errors | Selects an action on encountering a warning or error during boot. Default: Prompt on Warnings and Errors. Stop, prompt, and wait for user input when warnings or errors are detected. NOTE: Errors deemed critical to the operation of the computer hardware will always halt the computer. |
| Mouse/Touchpad | Defines how the computer handles mouse and touchpad input. Default: Touchpad and PS/2 Mouse. Leave the integrated touchpad enabled when an external PS/2 mouse is present. |
| Sign of Life | |
| Early Logo Display | Display Logo Sign of Life. Default: ON. |
| Early Keyboard Backlight | Keyboard Backlight Sign of Life. Default: ON. |
| MAC Address Pass-Through | |
| | Replaces the external NIC MAC address (in a supported dock or dongle) with the selected MAC address from the computer. Default: System Unique MAC Address. |

Table 13. System setup options—Virtualization menu

| Virtualization | |
|---------------------------------|---|
| Intel Virtualization Technology | Enables the computer to run a virtual machine monitor (VMM). Default: ON. |
| VT for Direct I/O | Enables the computer to perform Virtualization Technology for Direct I/O (VT-d). VT-d is an Intel method that provides virtualization for memory map I/O. Default: ON. |

Table 14. System setup options—Maintenance menu

| Maintenance | |
|-------------------------------|---|
| Asset Tag | Creates a system Asset Tag that can be used by an IT administrator to uniquely identify a particular system. Once set in BIOS, the Asset Tag cannot be changed. |
| Service Tag | Displays the Service Tag of the computer. |
| BIOS Recovery from Hard Drive | Enables the computer to recover from a bad BIOS image, as long as the Boot Block portion is intact and functioning. Default: ON. |

Table 14. System setup options—Maintenance menu(continued)



| Maintenance | |
|----------------------|--|
| |  NOTE: BIOS recovery is designed to fix the main BIOS block and cannot work if the Boot Block is damaged. In addition, this feature cannot work in the event of EC corruption, ME corruption, or a hardware issue. The recovery image must exist on an unencrypted partition on the drive. |
| BIOS Auto-Recovery | Enables the computer to automatically recover the BIOS without user actions. This feature requires BIOS Recovery from Hard Drive to be set to Enabled. Default: OFF. |
| Start Data Wipe |  CAUTION: This Secure Wipe Operation deletes information in a way that it cannot be reconstructed. If enabled, the BIOS will queue up a data wipe cycle for storage devices that are connected to the motherboard on the next reboot. Default: OFF. |
| Allow BIOS Downgrade | Controls flashing of the system firmware to previous revisions. Default: ON. |

Table 15. System setup options—System Logs menu

| System Logs | |
|-------------------|--|
| Power Event Log | Displays Power events. Default: Keep. |
| BIOS Event Log | Displays BIOS events. Default: Keep. |
| Thermal Event Log | Displays Thermal events. Default: Keep. |

Table 16. System setup options—SupportAssist menu

| SupportAssist | |
|---|--|
| Dell Auto operating system Recovery Threshold | Controls the automatic boot flow for SupportAssist System Resolution Console and for Dell operating system Recovery tool. Default: 2. |
| SupportAssist operating system Recovery | Enables or disables the boot flow for SupportAssist operating system Recovery tool in the even of certain system errors. Default: ON. |


System and setup password

Table 17. System and setup password

| Password type | Description |
|-----------------|--|
| System password | Password that you must enter to log on to your system. |
| Setup password | Password that you must enter to access and make changes to the BIOS settings of your computer. |

You can create a system password and a setup password to secure your computer.

 **CAUTION:** The password features provide a basic level of security for the data on your computer.

 **CAUTION:** Anyone can access the data stored on your computer if it is not locked and left unattended.

 **NOTE:** System and setup password feature is disabled.

Assigning a system setup password

Prerequisites

You can assign a new **System or Admin Password** only when the status is in **Not Set**.

About this task

To enter the system setup, press F2 immediately after a power-on or reboot.

Steps

1. In the **System BIOS** or **System Setup** screen, select **Security** and press **Enter**.
The **Security** screen is displayed.
2. Select **System/Admin Password** and create a password in the **Enter the new password** field.
Use the following guidelines to assign the system password:
 - A password can have up to 32 characters.
 - The password can contain the numbers 0 through 9.
 - Only lower case letters are valid, upper case letters are not allowed.
 - Only the following special characters are allowed: space, ("), (+), (,), (-), (.), (/), (;), ([), (\), (]), (').
3. Type the system password that you entered earlier in the **Confirm new password** field and click **OK**.
4. Press **Esc** and a message prompts you to save the changes.
5. Press **Y** to save the changes.
The computer reboots.

Deleting or changing an existing system setup password


Prerequisites

Ensure that the **Password Status** is Unlocked (in the System Setup) before attempting to delete or change the existing System and Setup password. You cannot delete or change an existing System or Setup password, if the **Password Status** is Locked.

About this task

To enter the System Setup, press **F2** immediately after a power-on or reboot.

Steps

1. In the **System BIOS** or **System Setup** screen, select **System Security** and press **Enter**.
The **System Security** screen is displayed.
2. In the **System Security** screen, verify that **Password Status** is **Unlocked**.
3. Select **System Password**, alter or delete the existing system password and press **Enter** or **Tab**.
4. Select **Setup Password**, alter or delete the existing setup password and press **Enter** or **Tab**.
 **NOTE:** If you change the System and/or Setup password, re enter the new password when prompted. If you delete the System and Setup password, confirm the deletion when prompted.
5. Press **Esc** and a message prompts you to save the changes.
6. Press **Y** to save the changes and exit from System Setup.
The computer restarts.

Clearing CMOS settings

About this task

 **CAUTION:** Clearing CMOS settings will reset the BIOS settings on your computer.

Steps

1. Remove the [base cover](#).
2. Disconnect the battery cable from the system board.
3. Wait for one minute.
4. Connect the battery cable to the system board.
5. Replace the [base cover](#).

Clearing BIOS (System Setup) and System passwords

About this task

To clear the system or BIOS passwords, contact Dell technical support as described at www.dell.com/contactdell.

 **NOTE:** For information on how to reset Windows or application passwords, refer to the documentation accompanying Windows or your application.

Troubleshooting

Dell SupportAssist Pre-boot System Performance Check diagnostics

About this task

The SupportAssist diagnostics (also known as system diagnostics) performs a complete check of your hardware. The Dell SupportAssist Pre-boot System Performance Check diagnostics is embedded with the BIOS and is launched by the BIOS internally. The embedded system diagnostics provides a set of options for particular devices or device groups allowing you to:

- Run tests automatically or in an interactive mode
- Repeat tests
- Display or save test results
- Run thorough tests to introduce additional test options to provide extra information about the failed device(s)
- View status messages that inform you if tests are completed successfully
- View error messages that inform you of problems encountered during testing

 **NOTE:** Some tests for specific devices require user interaction. Always ensure that you are present at the computer terminal when the diagnostic tests are performed.

For more information, see [Resolve Hardware Issues With Built-in and Online Diagnostics \(SupportAssist ePSA, ePSA or PSA Error Codes\)](#).

Running the SupportAssist Pre-Boot System Performance Check

Steps

1. Turn on your computer.
2. As the computer boots, press the F12 key as the Dell logo appears.
3. On the boot menu screen, select the **Diagnostics** option.
4. Click the arrow at the bottom left corner.
Diagnostics front page is displayed.
5. Click the arrow in the lower-right corner to go to the page listing.
The items detected are listed.
6. To run a diagnostic test on a specific device, press Esc and click **Yes** to stop the diagnostic test.
7. Select the device from the left pane and click **Run Tests**.
8. If there are any issues, error codes are displayed.
Note the error code and validation number and contact Dell.

Recovering the operating system

When your computer is unable to boot to the operating system even after repeated attempts, it automatically starts Dell SupportAssist OS Recovery.

Dell SupportAssist OS Recovery is a standalone tool that is preinstalled in all Dell computers installed with Windows 10 operating system. It consists of tools to diagnose and troubleshoot issues that may occur before your computer boots to the operating system. It enables you to diagnose hardware issues, repair your computer, back up your files, or restore your computer to its factory state.

You can also download it from the Dell Support website to troubleshoot and fix your computer when it fails to boot into their primary operating system due to software or hardware failures.

For more information about the Dell SupportAssist OS Recovery, see *Dell SupportAssist OS Recovery User's Guide* at www.dell.com/support.

Flashing BIOS (USB key)

Steps

1. Follow the procedure from step 1 to step 7 in "[Flashing the BIOS](#)" to download the latest BIOS setup program file.
2. Create a bootable USB drive. For more information see the knowledge base article [SLN143196](#) at www.dell.com/support.
3. Copy the BIOS setup program file to the bootable USB drive.
4. Connect the bootable USB drive to the computer that needs the BIOS update.
5. Restart the computer and press **F12** when the Dell logo is displayed on the screen.
6. Boot to the USB drive from the **One Time Boot Menu**.
7. Type the BIOS setup program filename and press **Enter**.
8. The **BIOS Update Utility** appears. Follow the instructions on the screen to complete the BIOS update.

Flashing the BIOS

About this task

You may need to flash (update) the BIOS when an update is available or when you replace the system board.

Follow these steps to flash the BIOS:

Steps

1. Turn on your computer.
2. Go to www.dell.com/support.
3. Click **Product support**, enter the Service Tag of your computer, and then click **Submit**.

 **NOTE:** If you do not have the Service Tag, use the auto-detect feature or manually browse for your computer model.

4. Click **Drivers & downloads > Find it myself**.
5. Select the operating system installed on your computer.
6. Scroll down the page and expand **BIOS**.
7. Click **Download** to download the latest version of the BIOS for your computer.
8. After the download is complete, navigate to the folder where you saved the BIOS update file.
9. Double-click the BIOS update file icon and follow the instructions on the screen.

Backup media and recovery options

It is recommended to create a recovery drive to troubleshoot and fix problems that may occur with Windows. Dell proposes multiple options for recovering Windows operating system on your Dell PC. For more information, see [Dell Windows Backup Media and Recovery Options](#).

WiFi power cycle

About this task

If your computer is unable to access the internet due to WiFi connectivity issues a WiFi power cycle procedure may be performed. The following procedure provides the instructions on how to conduct a WiFi power cycle:

 **NOTE:** Some ISPs (Internet Service Providers) provide a modem/router combo device.

Steps

1. Turn off your computer.
2. Turn off the modem.

3. Turn off the wireless router.
4. Wait for 30 seconds.
5. Turn on the wireless router.
6. Turn on the modem.
7. Turn on your computer.

Flea power release

About this task

Flea power is the residual static electricity that remains on the computer even after it has been powered off and the battery has been removed. The following procedure provides the instructions on how to conduct flea power release:

Steps



1. Turn off your computer.
2. Remove the [base cover](#).
3. Remove the [battery](#).
4. Press and hold the power button for 15 seconds to drain the flea power.
5. Replace the [battery](#).
6. Replace the [base cover](#).
7. Turn on your computer.

Getting help and contacting Dell

Self-help resources


You can get information and help on Dell products and services using these self-help resources:


Table 18. Self-help resources

| Self-help resources | Resource location |
|--|---|
| Information about Dell products and services | www.dell.com |
| My Dell |  |
| Tips |  |
| Contact Support | In Windows search, type Contact Support , and press Enter. |
| Online help for operating system | www.dell.com/support/windows www.dell.com/support/linux |
| Troubleshooting information, user manuals, set up instructions, product specifications, technical help blogs, drivers, software updates, and so on. | www.dell.com/support |
| Dell knowledge base articles for a variety of computer concerns | <ol style="list-style-type: none"> 1. Go to www.dell.com/support. 2. On the menu bar at the top of the Support page, select Support > Knowledge Base. 3. In the Search field on the Knowledge Base page, type the keyword, topic, or model number, and then click or tap the search icon to view the related articles. |
| Learn and know the following information about your product: <ul style="list-style-type: none"> • Product specifications • Operating system • Setting up and using your product • Data backup • Troubleshooting and diagnostics • Factory and system restore • BIOS information | See <i>Me and My Dell</i> at www.dell.com/support/manuals . To locate the <i>Me and My Dell</i> relevant to your product, identify your product through one of the following: <ul style="list-style-type: none"> • Select Detect Product. • Locate your product through the drop-down menu under View Products. • Enter the Service Tag number or Product ID in the search bar. |

Contacting Dell

To contact Dell for sales, technical support, or customer service issues, see www.dell.com/contactdell.

 **NOTE:** Availability varies by country/region and product, and some services may not be available in your country/region.

 **NOTE:** If you do not have an active Internet connection, you can find contact information about your purchase invoice, packing slip, bill, or Dell product catalog.