



Philips Brilliance
32:9 SuperWide curved
LCD display

P Line

49 (48.8"/124 cm diag.)
5120 x 1440 (Dual QHD)

Brilliance

498P9

Wide open possibilities

with two high-performance monitors in one

Our award-winning 49" curved 32:9 SuperWide display is like two full-size high-performance monitors in one. Productivity-enhancing features like multiple connection and Integrated KVM deliver the performance and convenience you expect.

Expand your horizons

- 32:9 SuperWide screen designed to replace multiscreen setups
- MultiView enables simultaneous dual connect and view
- 1800 r curved display for a more immersive experience
- Effortlessly smooth action with Adaptive-Sync technology

Designed for the way you work

- Built-in KVM switch to easily switch between sources
- Less eye fatigue with Flicker-Free technology
- LowBlue Mode for easy-on-the-eyes productivity
- Tilt, swivel and height-adjust for an ideal viewing position



reddot award 2018
winner

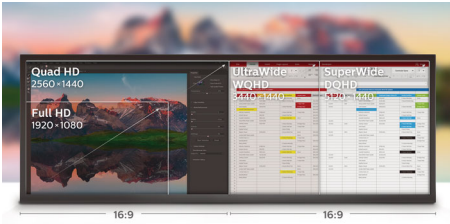
PHILIPS

32:9 SuperWide curved LCD display
P Line 49 (48.8"/124 cm diag.), 5120 x 1440 (Dual QHD)

498P9/00

Highlights

32:9 SuperWide



32:9 SuperWide 49" screen with 5120 x 1440 resolution is designed to replace multiscreen setups for a massive wide view. It's like having two 27" 16:9 Quad HD displays side by side. SuperWide monitors offer the screen area of dual monitors without the complicated setup.

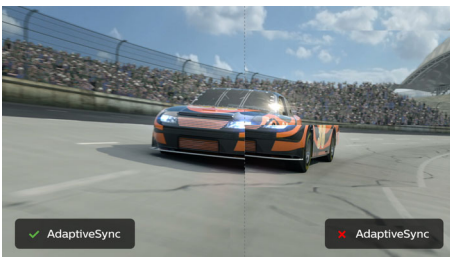
MultiView technology

With the ultra-high resolution Philips MultiView display, you can now experience a world of connectivity. MultiView enables active dual connect and view so that you can work with multiple devices like a PC and notebook simultaneously, for complex multitasking.

1800 r Curved display

Innovative curved display offers less image distortion, a wider field of view, reduced glare and more comfort for your eyes.

Adaptive-Sync technology



Gaming shouldn't be a choice between choppy gameplay or broken frames. Get fluid, artefact-free performance at virtually any frame rate

with Adaptive-Sync technology, smooth quick refresh and ultra-fast response time.

MultiClient Integrated KVM



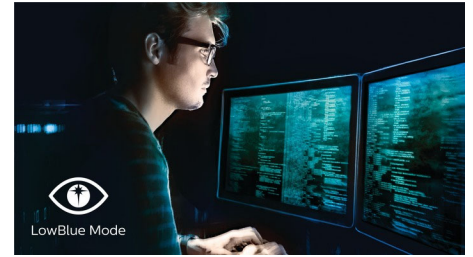
With the MultiClient Integrated KVM switch, you can control two separate PCs with one monitor-keyboard-mouse setup. A convenient button allows you to quickly switch between sources. Handy with setups that require dual PC computing power or sharing one large monitor to show two different PCs.

Flicker-Free technology



Due to the way brightness is controlled on LED-backlit screens, some users experience flicker on their screen which causes eye fatigue. Philips Flicker-Free technology applies a new solution to regulate brightness and reduce flicker for more comfortable viewing.

LowBlue Mode



Studies have shown that just as ultra-violet rays can cause eye damage, shortwave-length blue light rays from LED displays can cause eye damage and affect vision over time. Developed for wellbeing, the Philips LowBlue Mode setting uses a smart software technology to reduce harmful shortwave blue light.

Compact Ergo Base

The Compact Ergo Base is a people-friendly Philips monitor base that tilts, swivels and height-adjusts so each user can position the monitor for maximum viewing comfort and efficiency.



iF Design

iF DESIGN AWARD is a seal of quality for exceptional design and a symbol that consumers can trust.

The Philips Brilliance 49" SuperWide Curved Monitor offers the ultimate in picture fidelity and screen format and maximises user functionality



reddot award 2018
winner

Red Dot

Red Dot stands for belonging to the best in design and business.

The task of placing this large screen on a stand with a similar presence is met in an exemplary manner. The result is a monitor appearing as an artistic entity



Specifications

Picture/Display

- LCD panel type: VA LCD
- Adaptive sync
- Backlight type: W-LED system
- Panel Size: 48.8"/124 cm
- Display Screen Coating: Anti-Glare, 3H, Haze 25%
- Effective viewing area: 1193.5 (H) x 335.7 (V) mm at 1800 R curvature*
- Aspect ratio: 32:9
- Maximum resolution: 5120 x 1440 @ 70 Hz*
- Pixel Density: 109 PPI
- Response time (typical): 5 ms (Grey to Grey)*
- Brightness: 450 cd/m²
- Contrast ratio (typical): 3000:1
- SmartContrast: 80,000,000:1
- Pixel pitch: 0.233 x 0.233 mm
- Viewing angle: 178° (H)/178° (V), @ C/R > 10
- Flicker-free
- Picture enhancement: SmartImage
- Display colours: 16.7 M
- Colour gamut (typical): NTSC 103%*, sRGB 121%*, Adobe RGB 91%*
- Scanning Frequency: 30 - 140 kHz (H) / 48 - 70 Hz (V); Adaptive sync (for HDMI/DP)
- SmartUniformity: 97 ~ 102%
- Delta E: < 2
- sRGB
- LowBlue Mode
- EasyRead

Connectivity

- Signal Input: DisplayPort 1.4 x 1, HDMI 2.0 b x 2
- HDCP: HDCP 2.2 (HDMI / DP)
- USB:: USB 3.2 x 2 (upstream), USB 3.2 x 4 (downstream with x 1 fast charge B.C 1.2)
- Sync Input: Separate Sync
- Audio (In/Out): Headphone out

Convenience

- Built-in Speakers: 5 W x 2
- MultiView: PBP (2 x devices)
- User convenience: SmartImage, Input, User, Menu, Power On/Off
- Control software: SmartControl
- OSD Languages: Brazil Portuguese, Czech, Dutch, English, Finnish, French, German, Greek, Hungarian, Italian, Japanese, Korean, Polish, Portuguese, Russian, Simplified Chinese, Spanish, Swedish, Traditional Chinese, Turkish, Ukrainian
- Other convenience: Kensington lock, VESA mount (100 x 100 mm)
- Plug and Play Compatibility: DDC/CI, Mac OS X, sRGB, Windows 10 / 8.1 / 8 / 7

Stand

- Height adjustment: 130 mm
- Swivel: +/- 20 degree
- Tilt: -5~10 degree

Power

- ECO mode: 41.7 W (typ.)
- Energy Label Class: G
- On mode: 43.9 W (typ.) (EnergyStar test method)
- Standby mode: 0.3 W
- Off mode: Zero watts with Zero switch
- Power LED indicator: Operation - White, Standby mode - White (flashing)
- Power supply: Built-in, 100–240 VAC, 50–60 Hz

Dimensions

- Product with stand (max height): 1194 x 568 x 303 mm
- Product without stand (mm): 1194 x 369 x 156 mm
- Packaging in mm (W x H x D): 1308 x 384 x 553 mm

Weight

- Product with stand (kg): 15.20 kg
- Product without stand (kg): 10.90 kg
- Product with packaging (kg): 21.22 kg

Operating conditions

- Temperature range (operation): 0°C to 40°C °C
- Temperature range (storage): -20°C to 60°C °C
- Relative humidity: 20%-80 %
- Altitude: Operation: +12,000 ft (3658 m), Non-operation: +40,000 ft (12,192 m)
- MTBF (demonstrated): 70,000 hrs (excluded backlight)

Sustainability

- Environmental and energy: EnergyStar 8.0, EPEAT*, RoHS, TCO Certified
- Recyclable packaging material: 100 %
- Post-consumer recycled plastic: 35%
- Specific Substances: PVC/BFR free housing, Mercury free

Compliance and standards

- Regulatory Approvals: CB, EPA, FCC Class B, ICES-003, CE Mark, CU-EAC, cETLus, TUV/GS, TUV Ergo, SEMKO, UKRAINIAN

Cabinet

- Front bezel: Black
- Rear cover: Black
- Foot: Black
- Finish: Texture

What's in the box?

- Monitor with stand
- Cables: HDMI cable, DP cable, Power cable
- User Documentation



Issue date 2021-06-16

Version: 7.0.2

12 NC: 8670 001 67611
EAN: 87 12581 76733 4

© 2021 Koninklijke Philips N.V.
All Rights reserved.

Specifications are subject to change without notice.
Trademarks are the property of Koninklijke Philips N.V.
or their respective owners.

www.philips.com

* Radius of the arc of the display curvature in mm

* The maximum resolution works for either HDMI input or DP input.

* Response time value equal to SmartResponse

* NTSC Area based on CIE 1976

* sRGB Area based on CIE1931

* Adobe RGB Coverage based on CIE 1976

* Activities such as screen sharing and online streaming over the Internet can impact your network performance. Your hardware and network bandwidth will determine the overall audio and video quality.

* EPEAT rating is valid only where Philips registers the product. Please visit <https://www.epeat.net/> for registration status in your country.

* The monitor may look different from feature images.