

SILVERNET



Intelligent Wi-Fi Solutions

SilverNets innovative series of Wi-Fi products offers remarkable performance and features to suit all sizes of networks & budgets.

All configuration and management is centrally controlled for speed and efficiency for all available Wi-Fi devices. This allows for easier monitoring of multi-site, large coverage and enterprise networks.

SILVERNET

sales@silvernet.com www.silvernet.com
2 Vermont Place, Tongwell, Milton Keynes, Bucks, MK15 8JA

Version 1.4

SILVERNET

Integrated FIT AP + Controller Architecture

The powerful central controller is designed to work with all SilverNet network enterprise class AP equipment. A single controller can supervise and manage Wi-Fi networks with multiple, distributed APs, allowing for a far more efficient network.

Easy to use Interface

No special training is required to operate the controller system. The interface allows for single or multi WLAN networks on the dashboard. Whilst our simple yet innovative design also allows for real-time status monitoring and customised configuration.

One minute network configuration

Centralised management between the controller & APs quickly synchronises the wireless configuration with each AP to complete a unified Wi-Fi network construction.

Ultra Fast and powerful APs that deliver

SilverNet's AP's offer wireless speeds from 300Mbps to 1667Mbps depending on the user requirements. The installation methods of AP's can be varied, so auto adaption to different environments by diversity on TX power and antenna gain mean a far more stable and reliable signal.

Remarkable Performance

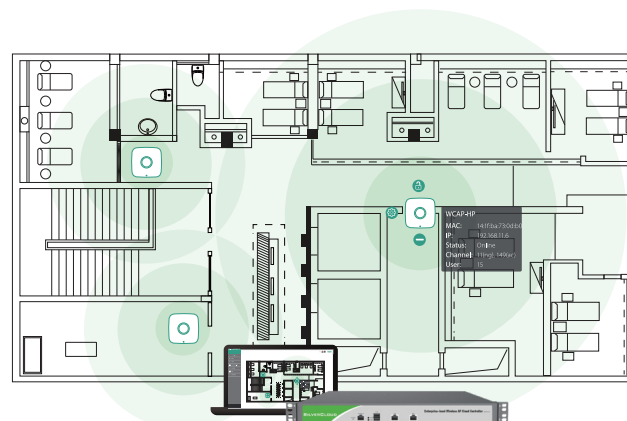
SilverNet AP's possess enterprise class features & outstanding characteristics when compared to other AP'S on the market, yet remain very competitively priced.

On-site & Cloud Management

The controller hardware can be installed either in an on site central control room or in the cloud for local or remote management via public IP address.

Unlimited AP numbers

Unlimited AP's can be controlled by the SilverCloud controller. Providing the best solutions for customers to plan and expand their WLAN networks as their needs might change at a later date.

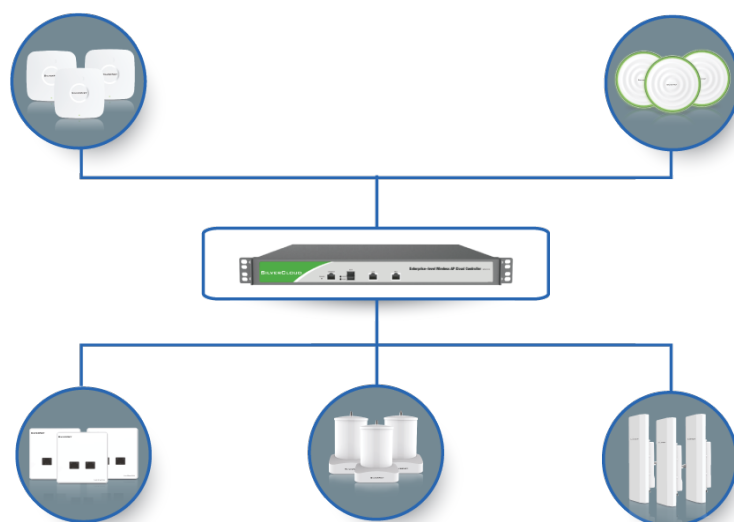


SilverCloud Controller

Integrated FIT AP + Controller Architecture



Easy-to-use interface



One controller supports multiple AP's

SILVERNET AP Features

Enterprise Level Radio Chipset

The high speed 720MHz Atheros CPU and 128MB DDR makes SilverNet access points significantly more powerful, providing stable connectivity and reliability in multi-functional wireless networks.

Supports FAT AP & FIT AP Mode

SilverNet's FIT AP has "zero-configuration" with all wireless network settings stored in the controller and pushed to each AP.

The FIT AP is great for enterprise/ISP level wireless networks & larger deployments.

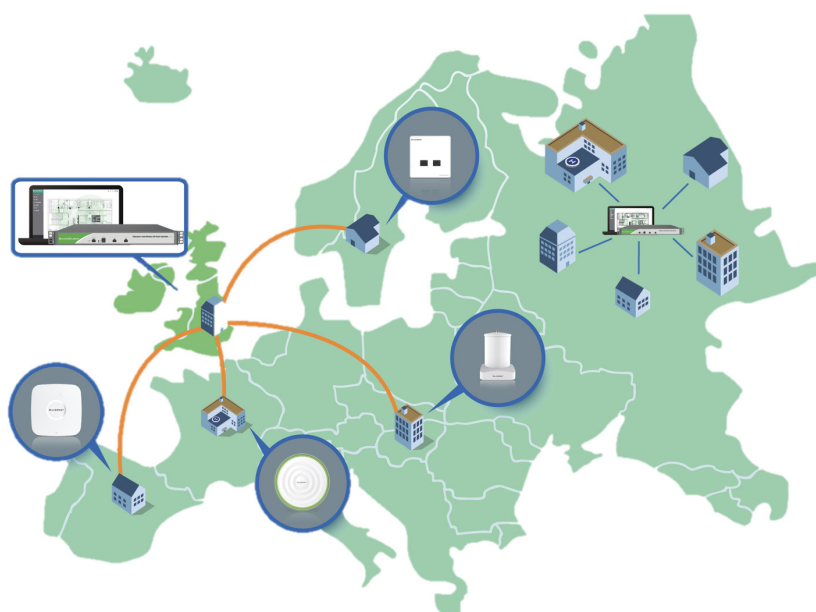
Whilst the FAT AP is perfect for small site users who own a few APs, working on a standalone system, SilverNet AP's support both options.

Easy Installation

With our mounting kits, customers can easily install our equipment to suit the many different indoor or outdoor environments. Mounting the AP on the ceiling or on a wall will help avoid noise and extend your Wi-Fi Coverage.

Support for standard PoE

SilverNet access points are powered by PoE. Making for a more flexible installation.



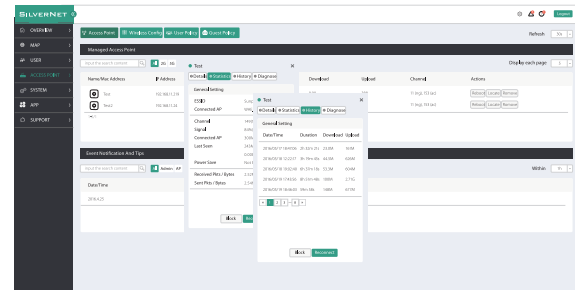
	SIL-WCAP-AC-W	SIL-WCAP-AC	SIL-WCAP-AC-PRO	SIL-WCAP-AC-EXT	SIL-WCAP-AC-OS
Frequency	2.4GHz & 5GHz	2.4GHz & 5GHz	2.4GHz & 5GHz	2.4GHz & 5GHz	2.4GHz & 5GHz
2.4GHz speed	300Mbps	300Mbps	450Mbps	300Mbps	300Mbps
2.4GHz MIMO	2*2	2*2	3*3	2*2	2*2
5GHz speed	433Mbps	867Mbps	1200Mbps	867Mbps	867Mbps
5GHz MIMO	1*1	2*2	3*3	2*2	2*2
PoE	802.3af(48VDC)	802.3af(48VDC)	802.3af(48VDC)	802.3af(48VDC)	802.3af(48VDC)
Pole Mount	-	√	√	√	√
Wall Mount	√	√	√	-	√
Tx power	17dbm	23dbm	27dbm	30dBm	30dBm
Distance	50m	150m	200m	250m	400m
Antenna Gain				6dBi	13dBi
Enclosure				UV Outdoor Plastic	Die-cast Aluminum
ESD Protection				16kV	16kV
Lightning Protection				2kV	8kV
LAN Ports				1*10/100/1000 Base-T Ethernet (Gigabit LAN with Active PoE)	1*10/100/1000 Base-T Ethernet (Gigabit LAN with Active PoE)

SILVERCLOUD Controller

The SilverCloud Controller is a carrier grade Wireless Network Management System, which supports the full range of SilverNet APs. This allows the network to be managed centrally by a Network Administrator. Using integrated powerful features to control multiple and distributed APs in a highly effective approach.

Real Time Status

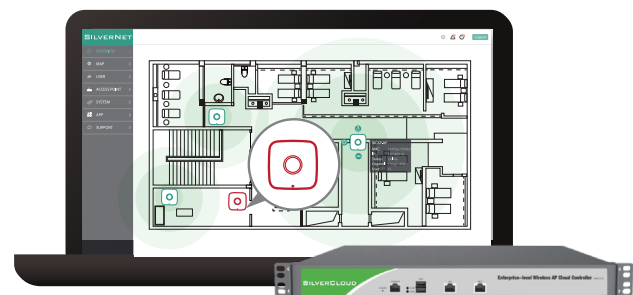
Real time statistics allows monitoring for the networks online AP's and allows for network history traffic to be traced from 24hrs to 30 days.



Real-Time Statistics

L2/L3 Auto Discovery

AP's can be auto detected by the controller in the same WLAN network. All AP devices are discoverable by the controller and configured in just a few minutes.

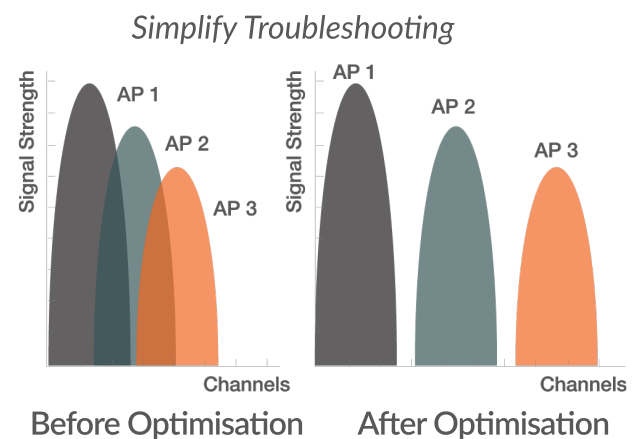


Wireless Map

Uploading and scaling your own site plan makes the wireless map function even easier to monitor the status of each AP in the network. Monitor the number of users connected to ensure coverage and quality of your system.

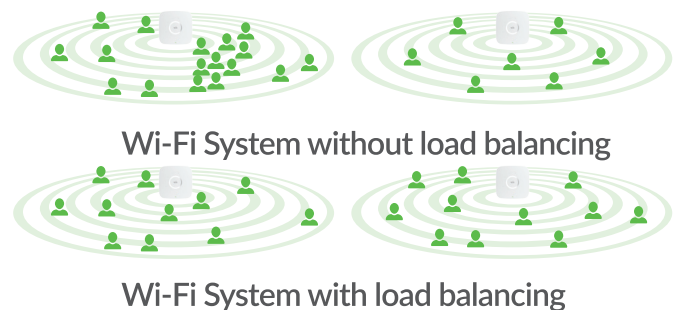
Channel Optimisation

Intelligent Channel utilisation makes it possible to continually process the wireless network to ensure it is stable and reliable for the users by avoiding potential self made noise congestion.



Load Balancing

SilverNet systems are equipped with intelligent user load balancing, making the product suitable for sparsely populated rural conditions or hi-density population areas.



Specifications

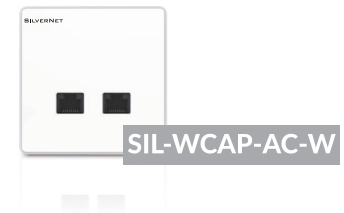
SilverCloud Controller



Physical Characteristics	
Processor	Dual-Core 1.8GHz CPU
Memory	2GB DDR RAM
Hardisk	8G SSD
Ethernet	1*10/100/1000Mbps Data Port, 1*10/100/1000Mbps Management Port
LED	Power& SSD Indicator
Other Interface	2*USB2.0, 1 Console RJ-45 port
Power	Input: 110 – 240V AC, Output: 12VDC/5A
Weight	2.2 kg
Temperature	Working Temperature: 10℃ ~ 60℃, Storage Temperature: -20℃ ~ 70℃
Relative Humidity	5%-95%, no-condensing
Installation	Desk-top & Rack-mount
Dimension	430mm*250mm*46mm (19 inches, 1U)
Management	
Configuration	Web GUI, CLI
AP Provisioning	L2 or L3 auto-discovery, Auto online software upgrade
Traffic History	Supported
Capacity	
Managed APs	Unlimited
Concurrent Users	Unlimited
Network Architecture	
IP	IPv4 / IPv6
VLANs	802.1Q (8 BSSID per radio)
Redundancy	1+1 with auto-synchronization
Wireless	
Wireless Security	WEP, WPA-PSK, WPA-Enterprise (WPA/WPA2, TKIP/AES)
Access Control	L2 (MAC address-based), L2 client isolation
Wireless Intrusion Detection (WIDS)	Rogue AP detection
802.11e/WMM	Supported
Rate Limiting	Supported
Wlan Group	Supported
RF Management	Automatic channel and power optimization
Client Load Balancing	Automatic
Guest Access	Supported
Captive Portal	Supported
Mesh(Wireless Uplink)	Supported

Specifications

802.11ac Dual-Band In Wall Access Point



Physical Characteristics	
Processor	Atheros SoC 560MHz
Flash / Memory	128MB DDR, 16MB Flash
LAN Port	1*10/100M Base-T PoE, 2*10/100M Base-T
Button	Reset
Power	48VDC/0.32A 802.3af
Max Power Consumption	6W
Working Temperature	-10℃~60℃
Working Humidity	0%~95% non-condensing
Dimension	86*86*30mm
Mounting	Wall Mount
Certification	CE/RoHS
Wireless Characteristics	
Wi-Fi Standard	802.11ac/n/a/g/b
Frequency	2.4GHz&5GHz
Speed	733Mbps
Max Tx Power	17dBm
Antenna	2dBi Dual-Band Omni
Multi-SSID	up to 8 SSID Per Radio
Wireless Security	WEP, WPA-PSK, WPA-Enterprise (WPA/WPA2, TKIP/AES)
Concurrent Clients	100+
Coverage Range	50m
Advanced Characteristics	
Mode	Fat AP/Fit AP
VLAN	802.1q
Guest Policy	Web Portal/Password
MAC Filter	Blacklist
User QoS	Speed Limit by User Group
Traffic History	Duration/Download/Upload
Load Balance	Online User / Bandwidth
Wireless Uplink	Supported

Specifications

802.11ac Dual-Band Access Point



Physical Characteristics	
Processor	Atheros SoC 720MHz
Flash / Memory	128MB DDR, 16MB Flash
LAN Port	1*10/100/1000M Gigabit
Button	Reset
Power	48VDC/0.32A 802.3af
Max Power Consumption	12W
Working Temperature	-10℃~60℃
Working Humidity	0%~95% non-condensing
Dimension	168*168*30mm
Mounting	Ceiling Mount/Wall Mount
Certification	CE/RoHS
Wireless Characteristics	
Wi-Fi Standard	802.11ac/n/a/g/b
Frequency	2.4GHz&5GHz
Speed	1167Mbps
Max Tx Power	23dBm
Antenna	3dBi Dual-Pola Omni
Multi-SSID	up to 8 SSID Per Radio
Wireless Security	WEP, WPA-PSK, WPA-Enterprise (WPA/WPA2, TKIP/AES)
Concurrent Clients	150+
Coverage Range	150m
Advanced Characteristics	
Mode	Fat AP/Fit AP
VLAN	802.1q
Guest Policy	Web Portal/Password
MAC Filter	Blacklist
User QoS	Speed Limit by User Group
Traffic History	Duration/Download/Upload
Load Balance	Online User / Bandwidth
Wireless Uplink	Supported

Specifications

802.11ac 3*3 Dual-Band Access Point

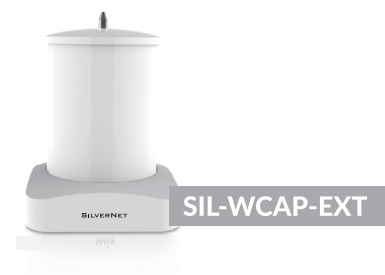


SIL-WCAP-PRO

Physical Characteristics	
Processor	Atheros SoC 720MHz
Flash / Memory	128MB DDR, 16MB Flash
LAN Port	1*10/100/1000M Gigabit
Button	Reset
Power	48VDC/0.32A 802.3af
Max Power Consumption	15W
Working Temperature	-10℃~60℃
Working Humidity	0%~95% non-condensing
Dimension	φ 180*56mm
Mounting	Ceiling Mount/Wall Mount
Certification	CE/RoHS
Wireless Characteristics	
Wi-Fi Standard	802.11ac/n/a/g/b
Frequency	2.4GHz&5GHz
Speed	1750Mbps
Max Tx Power	27dBm
Antenna	3dBi Dual-Pola Omni
Multi-SSID	up to 8 SSID Per Radio
Wireless Security	WEP, WPA-PSK, WPA-Enterprise (WPA/WPA2, TKIP/AES)
Concurrent Clients	150+
Coverage Range	200m
Advanced Characteristics	
Mode	Fat AP/Fit AP
VLAN	802.1q
Guest Policy	Web Portal/Password
MAC Filter	Blacklist
User QoS	Speed Limit by User Group
Traffic History	Duration/Download/Upload
Load Balance	Online User / Bandwidth
Wireless Uplink	Supported

Specifications

802.11ac Dual-Band Outdoor Access Point with Omni Antenna



Physical Characteristics	
Processor	Atheros SoC 720MHz
Flash / Memory	128MB DDR, 16MB Flash
LAN Port	1*10/100/1000M Gigabit
Button	Reset
Power	48VDC/0.32A 802.3at
Max Power Consumption	15W
Working Temperature	-40°C~70°C
Working Humidity	10%~95% non-condensing
Dimension	178×178×238mm
Mounting	Pole Mount
Certification	CE/RoHS
Wireless Characteristics	
Wi-Fi Standard	802.11ac/n/a/g/b
Frequency	2.4GHz&5GHz
Speed	1167Mbps
Max Tx Power	30dBm
Antenna	6dBi Dual-band Omni
Multi-SSID	up to 8 SSID Per Radio
Wireless Security	WEP, WPA-PSK, WPA-Enterprise (WPA/WPA2, TKIP/AES)
Concurrent Clients	150+
Coverage Range	250m
Advanced Characteristics	
Mode	Fat AP/Fit AP
VLAN	802.1q
Guest Policy	Web Portal/Password
MAC Filter	Blacklist
User QoS	Speed Limit by User Group
Traffic History	Duration/Download/Upload
Load Balance	Online User / Bandwidth
Wireless Uplink	Supported

Specifications

802.11ac Dual-Band Outdoor Access Point with Sector Antenna



Physical Characteristics	
Processor	Atheros SoC 720MHz
Flash / Memory	128MB DDR, 16MB Flash
LAN Port	1*10/100/1000M Gigabit
Button	Reset
Power	48VDC/0.32A 802.3af
Max Power Consumption	15W
Working Temperature	-40°C~70°C
Working Humidity	10%~95% non-condensing
Dimension	450*650*87.5mm
Mounting	Pole/Wall Mount
Certification	CE/RoHS
Wireless Characteristics	
Wi-Fi Standard	802.11ac/n/a/g/b
Frequency	2.4GHz&5GHz
Speed	1167Mbps
Max Tx Power	30dBm
Antenna	13dBi Dual-Pola 90° Sector
Multi-SSID	up to 8 SSID Per Radio
Wireless Security	WEP, WPA-PSK, WPA-Enterprise (WPA/WPA2, TKIP/AES)
Concurrent Clients	150+
Coverage Range	400m
Advanced Characteristics	
Mode	Fat AP/Fit AP
VLAN	802.1q
Guest Policy	Web Portal/Password
MAC Filter	Blacklist
User QoS	Speed Limit by User Group
Traffic History	Duration/Download/Upload
Load Balance	Online User / Bandwidth
Wireless Uplink	Supported