

SILVERNET

WIRELESS-NETWORK-SOLUTIONS



SALES@SILVERNET.COM

ORDERS@SILVERNET.COM

SUPPORT@SILVERNET.COM

SILVERNET

WIRELESS-NETWORK-SOLUTIONS

Why SilverNet?

SilverNet was founded in 2005. The Managing Director, having worked in the wireless transmission market for many years felt he could offer the industry greatly improved products, solutions and services.

SilverNet has grown steadily since 2005, developing new products as the market evolves. As a British Manufacturer SilverNet have an enviable reputation for providing high quality wireless transmission products and services.

SilverNet have been finalists for communication product of the year for 4 consecutive years with a different product each year, showing consistency across the range.

As an established brand within the security industry SilverNet are finely attuned to the markets specialised needs. The global market offers a multitude of opportunities for SilverNet to expand going forward with equipment which continues to evolve with the market and crosses over into many horizontal markets. This allows SilverNet to remain strong within the industry allowing excellent service, reliability and longevity.

SilverNet offer the following unrivalled services:

Pre-Installation Support and Services

- Site surveys
- Reports and equipment kit lists
- Network design
- Formal quotation and tender assistance

Installation Support and Services

- Ordering and supply process
- Training
- Installation support
- Commissioning and configuration

Post Installation Support and Services

- Telephone and remote access technical support
- Extended warranties
- On-site support
- Upgrades / changes and movements



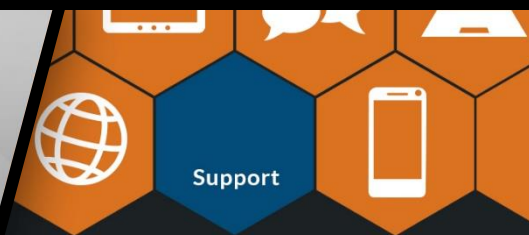
Direct Telephone

Technical Support



Remote & Onsite

Support when you need it



Training & Support

Exceptional UK Support Centre

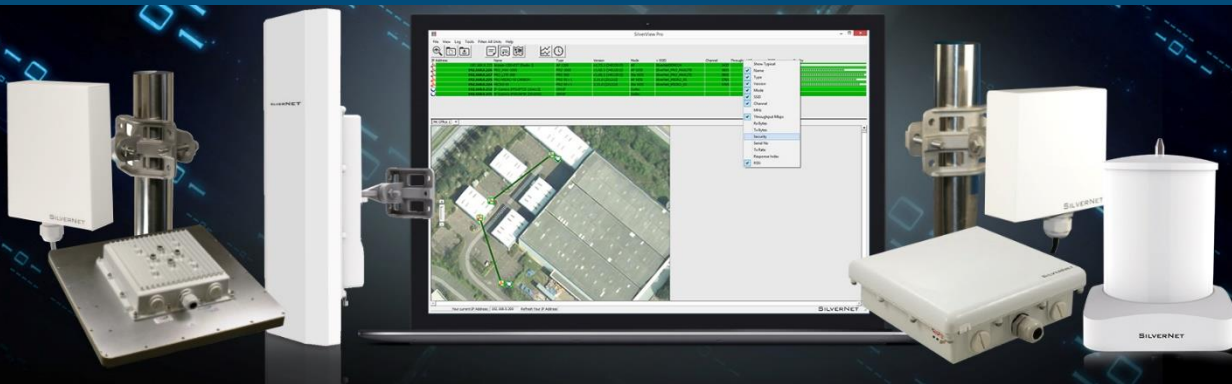
- UK based dedicated support helpline
- Online ticket system offering support and resolution of any issues
- Our engineers can remote on to your system if required to fault find and assist with your network
- Dedicated support email

Surveys & Commissioning

- On-site support
- Spectrum analysis
- Site visits and network design
- Wi-Fi Coverage Surveys
- Line of Site tests
- Tender support
- Assistance with changes/ movements and expansion of existing sites

Product & Sales Training

- Wireless hardware configuration Training
- Network Management Software Training
- Sales and network system design Training
- At our dedicated training suite in Milton Keynes
- Bespoke training available at your location



The Pro Range

Key Features

- Equipment operates at the 5GHz RF band (between 5.1GHz and 5.8GHz).
- The Pro Range has an actual data rate of 100Mbps full duplex and can be software upgraded to 240 or 500Mbps.
- The Pro Range SIL BASE 500 and SIL MAX 1000 models are capable of 500 and 1000Mbps respectively.
- Point-To-Point links to cover distances up to 40KM.
- Compact design.
- Rugged weatherproof IP66 and IP67 rated enclosures.
- Supplied with 3 axis tilt and swivel magnesium alloy bracketry.*
- 48v Power over Ethernet.
- Capable of 256 AES encryption.
- 2 year warranty as standard (extendable to 5 years).

* The PICO comes with a basic bracket and jubilee clip, 3 axis tilt and swivel bracket will be required for wall mounting and can be purchased individually.

Radios



	SIL PICO			SIL MICRO			SIL LITE			SIL MAX				SIL BASE 500-90
Frequency	5.1GHz - 5.8GHz			5.1GHz - 5.8GHz			5.1GHz - 5.8GHz			5.1GHz - 5.8GHz				5.1GHz - 5.8GHz
Distance	1KM			2KM			6KM			20KM				2KM
Available throughputs (Mbps)	100	240	500	100	240	500	100	240	500	100	240	500	1000	500
5Ghz speeds (Mbps)	300	300	866	300	300	866	300	300	866	300	300	866	1200	866
5Ghz MIMO	2*2			2*2			2*2			2*2			3*3	2*2
PoE	802.3af (48VDC)			802.3af (48VDC)			802.3af (48VDC)			802.3af (48VDC)				802.3af (48VDC)
Pole Mount	Yes			Yes			Yes			Yes				Yes
Wall Mount	No*			Yes			Yes			Yes				Yes
Antenna Gain	12dBi			15dBi			18dBi			23dBi		18dBi		16dBi
Enclosure	IP66			IP66			IP67			IP67				IP67
ESD Protection	8KV			8KV			15KV			15KV				15KV
Lightning Protection	-			-			8KV			8KV				8KV
Warranty	2 Years (extendable to 5 years at additional 10% cost of equipment)													

Accessories



Part Number	Description
SIL DLC 10M	Outdoor Shielded Ethernet Downlink Cable 10 Metres
SIL DLC 20M	Outdoor Shielded Ethernet Downlink Cable 20 Metres
SIL DLC 50M	Outdoor Shielded Ethernet Downlink Cable 50 Metres
SIL DLC 90M	Outdoor Shielded Ethernet Downlink Cable 90 Metres
SIL MNT 3	3 Axis magnesium alloy tilt and swivel bracket (Single) suitable for wall mounting PICO
SIL 48GPOE+	802.af/at compliant Gigabit PoE+ injector (includes UK power cable)



SILVERNET
WIRELESS NETWORK SOLUTIONS



Fibre Transmission SFP Modules

Key Features

- Data rate up to 1.25Gbps with a range of up to 80KM
- Data rate up to 10.3Gbps with a range of up to 10KM
- Operating temperature Standard: 0~+70°C Industrial: -40~+85 °C
- Compliant with SFP MSA specification
- Lifetime warranty

Industrial Managed PoE Switches

Key Features

- 4, 8, 16 and 24 Port Industrial Managed Gigabit PoE Switches
- 2 & 4 Gigabit Fibre SFP slots
- IEEE803.af/at compliant
- Operating temperature (-40°C ~+75°C)
- DIN Rail or wall mountable
- IP40 Protection
- Rugged
- 5 Year warranty

Industrial Un-Managed PoE Switches

Key Features

- 4 or 8 Port Industrial Un-Managed Gigabit PoE Switches
- 2 x Gigabit Fibre SFP slots
- IEEE803.af/at compliant
- Operating temperature (-40°C ~+75°C)
- DIN Rail or wall mountable
- IP40 Protection
- Rugged
- 5 Year warranty

Switches

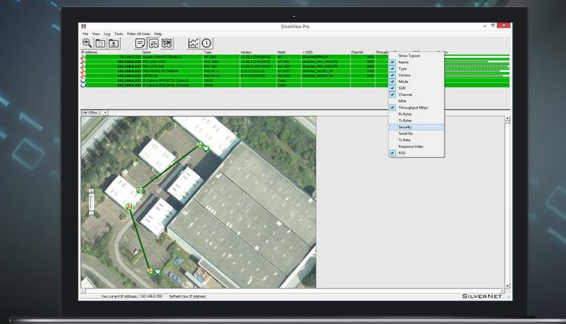


	SIL 73204P & SIL 73208P Unmanaged	SIL 73204MP	SIL 73208MP	SIL 73416MP	SIL 73024MP
Total Ports	6 & 10	6	10	20	24
Gigabit Ethernet	4 & 8	4	8	16	24
Gigabit Fibre	2	2 SFP	2 SFP	4 SFP	0 SFP
PoE Ports	4 & 8	4	8	16	24
Per Port Max Output	30W	30W	30W	30W	30W
Switch Bandwidth	20Gbps			56Gbps	
Switch Time Delay	<10µs			<10µs	
Power Input	9 – 56Vdc, Redundant			9 – 56Vdc, Redundant	
Power Consumption	<10W			<15W	
Enclosure	IP40 Protection, Aluminium Alloy			IP40 Protection, Aluminium Alloy	
Installation	DIN RAIL, Wall Mounted			DIN RAIL, Wall Mounted	
ESD Protection	15KV			15KV	
Standards	N/A	G.8032 (ERPS) IEEE.802.3, IEEE802.3u, IEEE802.3z, IEEE802.3x, IEEE802.3ad, IEEE802.1p, IEEE802.1x, IEEE802.3ab, IEEE802.1Q, IGMP snooping			
Warranty	5 Years			5 Years	

Accessories



Part Number	Description		Part Number	Description
SIL-SFP0-01-25-X850-0-5D	1G Multimode 850nm SFP, 550m		SIL-10G-DATAC-0.5-C	10G Direct Attach cable, SFP+, 0.5m
SIL-SFP0-01-25-X131-10XD	1G Singlemode 1310nm SFP, 10km		SIL-10G-DATAC-01-C	10G Direct Attach cable, SFP+, 1m
SIL-SFP0-01-25-X131-40XD	1G Singlemode 1310nm SFP, 40km		SIL-10G-DATAC-05-C	10G Direct Attach cable, SFP+, 5m
SIL-SFP0-01-25-X155-80XD	1G Singlemode 1550nm SFP, 80km		SIL-10G-DATAC-10-C	10G Direct Attach cable, Active SFP+, 10m
SIL-SFPX-08-10-X850-0-3D	10G Multimode 850nm SFP+, 300m			
SIL-SFPX-08-10-X131-02XD	10G Multimode 1310nm SFP+, 2km			
SIL-SFPX-08-10-X131-10XD	10G Singlemode 1310nm SFP+, 10km			
Warranty	Lifetime		Warranty	Lifetime



The Backhaul Range

Key Features

- 24GHz equipment operates at the Unlicensed 24GHz band.
- 80GHz equipment operates at the light licensed 80GHz band.
- The Backhaul Range is capable of throughputs up to 10Gbps.
- The equipment has Gigabit Ethernet interfaces and/or Optical ports.
- Point-To-Point links to cover distances up to 5KM.
- Telco grade equipment.
- Rugged weatherproof IP65 and IP67 rated enclosures.
- Supplied with bracketry and PoE Injectors.
- Capable of 256 AES encryption.*
- 2 year warranty as standard.

* AES encryption is only available on the 80GHz Backhaul Range and is upgradable via license key.

Radios

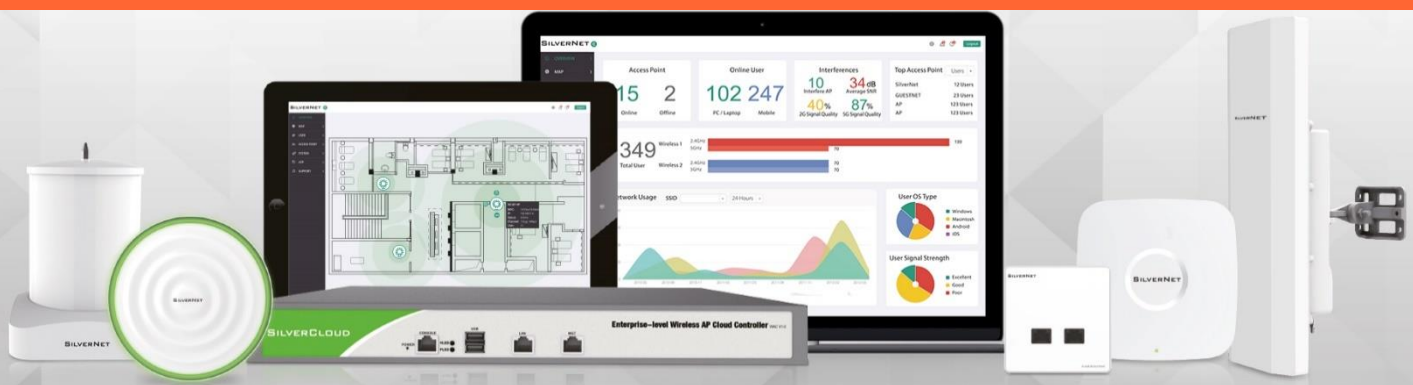


	SIL U24			SIL FDD 801G		SIL FDD 802G		SIL FDD 805G		SIL FDD 810G	
Frequency	24GHz			80GHz		80GHz		80GHz		80GHz	
Antenna (cm)	30	60	90	30	60	30	60	30	60	30	60
Distance (up to)	1KM	2.5KM	5KM	2KM	5KM	2KM	5KM	2KM	5KM	2KM	5KM
Available throughputs	500Mbps			1Gbps		2Gbps		5Gbps		10Gbps	
Interfaces	2 x GE Electrical			2 x GE Electrical		2 x Optical or 1 x 2.5Gbps optical		2 x 2.5Gbps Optical		1 x 10Gbps optical	
PoE	48v POE+			PoE (Proprietary)		PoE (Proprietary)		PoE (Proprietary)		PoE (Proprietary)	
Pole Mount	Yes			Yes		Yes		Yes		Yes	
Wall Mount	No			No		No		No		No	
Encryption	-			AES 256-BIT (AES activated via license key upgrade)				AES 256-BIT (AES activated via license key upgrade)			
ODU	IP65			IP65		IP65		IP67		IP67	
Operational Temperature	-35°C to +55°C			-35°C to +55°C		-35°C to +55°C		-35°C to +55°C		-35°C to +55°C	
Warranty	2 Years										

Accessories



Part Number	Description
SIL DLC 10M	Outdoor Shielded Ethernet Downlink Cable 10 Metres
SIL DLC 20M	Outdoor Shielded Ethernet Downlink Cable 20 Metres
SIL DLC 50M	Outdoor Shielded Ethernet Downlink Cable 50 Metres
SIL DLC 90M	Outdoor Shielded Ethernet Downlink Cable 90 Metres
AES Encryption	Upgrade license to AES 128/256 BIT encryption



Intelligent Wi-Fi Solutions

Key Features

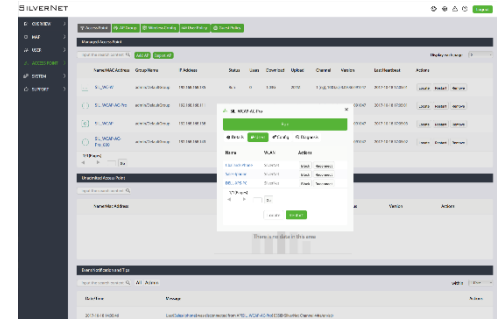
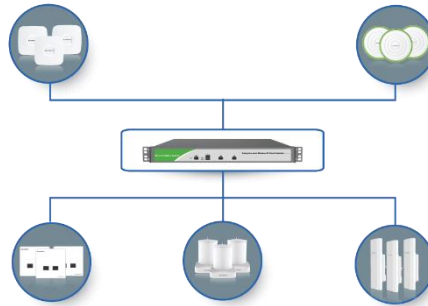
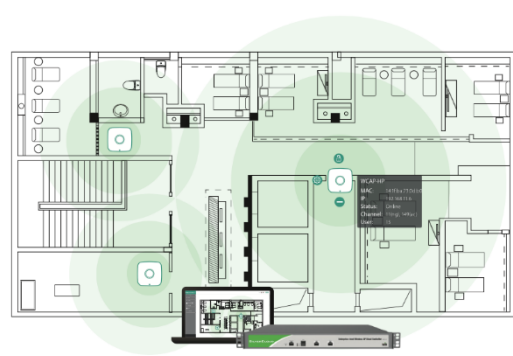
- Integrated FIT AP + Controller Architecture.
- Easy to use Interface.
- Ultra Fast and powerful AP's that deliver.
- Remarkable Performance.
- On-site & Cloud Management.
- Unlimited AP numbers.
- Channel Optimisation.
- Real Time Status.
- Load Balancing.
- Easy Installation.
- 1 year warranty as standard.




Radios



	SIL-WCAP-AC-W	SIL-WCAP-AC	SIL-WCAP-AC-S	SIL-WCAP-AX	SIL-WCAP-AC-EXT
Frequency	2.4GHz & 5GHz	2.4GHz & 5GHz	2.4GHz & 5GHz	2.4GHz & 5GHz	2.4GHz & 5GHz
2.4GHz speed (Mbps)	300	300	300	574	300
2.4GHz MIMO	2*2	2*2	2*2	2*2	2*2
5Ghz speeds (Mbps)	433	867	867	1201	867
5Ghz MIMO	1*1	2*2	MU-MIMO 2*2	MU-MIMO 2*2	2*2
PoE	802.3af (48VDC)	802.3af (48VDC)	802.3af (48VDC)	802.3af (48VDC)	802.3af (48VDC)
Mounting	Wall Mount	Ceiling or Wall Mount	Ceiling or Wall Mount	Ceiling or Wall Mount	Pole Mount
Tx power	17dBm	23dBm	23dBm	23dBm	30dBm
Antenna Gain	2dBi Dual-Band Omni	3dBi Dual-Band Omni	3dBi Dual-Band Omni	3dBi Dual-Band Omni	6dBi Dual-Band Omni
Distance	50m	150m	150m	150m	250m
Users	100+	150+	150+	150+	150+
LAN Ports	2*10/100M BASE-T	1*10/100/1000M BASE-T	1*10/100/1000M BASE-T	1*10/100/1000M BASE-T	1*10/100/1000M BASE-T
Working Temperature	-10°C to 60°C	-10°C to 60°C	-10°C to 60°C	-10°C to 60°C	-40°C to 70°C
ESD/Lightning Protection	-	-	-	-	15KV/8KV
Warranty	1 Year				



The background image shows the SilverView Network Management Software interface. It features a top menu bar with options like File, View, Log, Tools, Filter All Units, and Help. Below the menu is a toolbar with various icons. The main area is divided into several panels. On the left, there's a 'Statistics' panel showing a table of network data. In the center, there's a 'Quick Config' panel for setting up a device, including fields for IP Address, SSID, and various radio settings. On the right, there's a 'Throughput' panel with a line graph showing network performance over time. The title 'SILVERVIEW' is overlaid in large, bold, black letters across the top of the interface.

SILVERVIEW

NETWORK-MANAGEMENT-SOFTWARE

SilverView Network Management Software

SilverNet's bespoke Free of charge Network Management Software for easy installation of SilverNet devices.

Key Features

- Easy to navigate and install (plug and play).
- Discover SilverNet devices (access points and stations) even off subnet.
- Built in user guide.
- Secure – Multiple password level protection.
- Real time throughput monitoring.
- Easy configuration – simply click and log in to your device.
- Quick Configuration – set channel, SSID and operation mode without logging onto the radio unit.
- Set IP address – set the IP address of the device without the need to log into it.
- Remote helper – help is never too far away with our built in remote helper.
- Statistics – Live statistic updates on all active radio devices.
- Tabbed Mapping – Upload multiple maps and add your devices by a simple drag and drop action.

SilverView Pro v5.4.0 - Profile: default

File View Log Tools Filter: All Units Help

IP Address Name Type Version Mode SSID Channel Throughput Mbps Serial No Tx Rate RSSI (dBm) Quality

IP Address	Name	Type	Version	Mode	SSID	Channel	Throughput Mbps	Serial No	Tx Rate	RSSI (dBm)	Quality
192.168.0.202	192.168.0.202	192.168.0.202	v2.42.21	Sta WDS	silvernetwireless4321	5805	0.0048	50:11:EB:00:6D:EB	780	-13
192.168.0.203	192.168.0.203	192.168.0.203	v2.42.21	AP WDS	silvernetwireless4321	5805	0.0034	50:11:EB:00:6E:6B	866	-27
192.168.0.204	192.168.0.204	192.168.0.204	v2.42.16	Sta WDS	silvernetwireless1234	5745	0.0044	50:11:EB:00:54:B7	300	-21
192.168.0.205	192.168.0.205	192.168.0.205	v2.42.16	AP WDS	silvernetwireless1234	5745	0.0047	50:11:EB:00:54:C3	299	-22

Statistics
Configure
Quick Config
New Icon
Single Ended Throughput Test
Open Continuous Ping To Device
Reboot
Remove Selected Unit
Remove All Non-Active Units

Map Number 1 +

Throughput

Mbps

Seconds Ago

Test Settings

Test Type: tcp

Target IP Address: 192.168.0.5

Multicast Address: 224.0.0.200

Parallel Streams: 1

Test Bandwidth: 1 Mbps

Time To Live: 1

Test Duration: 2 minutes

Show last: 2 minutes on Graph Show Average

Find Target

Start Test

Test Status

Test Complete.

Last Recorded Throughput: 92.733 Mbps

Seconds since test started: 120

Seconds with no throughput: 0

Your current IP Address: 192.168.0.5 Refresh Your IP Address

SilverView Network Management Software

An aerial photograph of London, featuring the River Thames and the Shard. A white network diagram with nodes and connecting lines is overlaid on the cityscape.

SILVERNET
WIRELESS-NETWORK-SOLUTIONS

**Keeping you
connected**

Call us on 0800 652 1629

**SilverNet Ltd
Atlantic House
Michigan Drive
Tongwell
Milton Keynes
Buckinghamshire
MK15 8HQ**



**sales@silvernet.com
+44 (0) 800 6521629**



**support@silvernet.com
+44 (0) 871 2233 067**



**orders@silvernet.com
+44 (0) 800 6521629**



warranty@silvernet.com

SALES@SILVERNET.COM

ORDERS@SILVERNET.COM

SUPPORT@SILVERNET.COM