

# ThinkCentre M75n

As modern office spaces shift toward open concepts, personal desk space is shrinking. In shared and co-work spaces, even more so. Technology must respond to the ways and spaces in which people now work. Driven by continual innovation, Lenovo leads the industry in delivering powerful desktop performance, end-to-end security, energy-savings, and ergonomics in increasingly smaller and smaller devices.

With its smaller, lighter 350 ml Nano form factor, ThinkCentre M75n is the smallest desktop in the entire ThinkCentre portfolio. It weighs barely a pound and is as thin as two phones stacked together. Its AMD Ryzen™ PRO processors offer the real-world performance users need to accomplish their daily tasks, while Lenovo's comprehensive ThinkShield security solutions offer the dependable data protection businesses need. At the office or at home, ThinkCentre M75n serves as a portable, affordable, work-anywhere companion for years to come.



Smarter  
technology  
for all

Lenovo

AMD  
RYZEN  
PRO

# ThinkCentre M75n



## ROBUST PERFORMANCE

At only 35% the size of a 1L Tiny desktop, ThinkCentre M75n delivers the same level of performance as a Tiny—and up to two times faster thanks to its powerful AMD Ryzen™ PRO processors with Radeon™ Vega graphics that combine the processing power to stay productive and the graphics capabilities to create with ease.



## SECURITY INSIDE AND OUT

ThinkCentre devices allow your employees to innovate fearlessly with the reinforced security of ThinkShield, the most comprehensive, end-to-end security solution on the market that combines industry-leading hardware, software, services, and processes to protect your ideas and your business. ThinkCentre M75n is built with ThinkShield features, such as dTPM 2.0 chip, Smart USB protection, individual USB port disablement, and a chassis intrusion switch, in addition to many more security features that can be customized to meet your unique needs. A Kensington™ Cable Lock slot provides physical security to protect against theft.



## UNLIMITED FLEXIBILITY

Mount it anywhere—on the wall, behind a monitor, under the table top. Or keep it free for ultimate grab-and-go portability. ThinkCentre M75n makes it easy for users to commute without burden. Simply connect ThinkCentre M75n and start working, whether at the office or at home, for a multi-monitor, ergonomic, full desktop computing experience.



## MANAGEABILITY MEETS EFFICIENCY

ThinkCentre M75n has the lowest power consumption of all ThinkCentre desktops—it's up to 30% more efficient than even our 1L Tiny desktops. It's also efficient from an IT standpoint. ThinkCentre M75n is easy to deploy and easy to manage thanks to a variety of OS options to meet your customization needs and built-in driver support for older OS versions. Plus, all AMD PRO processors enable a full manageability feature set for simplified deployment, imaging, and management that is compatible with any current infrastructure.



## POWERFUL PRODUCTIVITY

ThinkCentre M75n features options that are proven to boost employee productivity, like Modern Standby, which allows users to receive emails, VoIP calls, and instant messages while the device is in standby mode and then resumes to full function in less than a second. Even though it's only 22 mm thin, ThinkCentre M75n doesn't sacrifice connectivity for size. It has all the ports users need to stay connected to peripherals, networks, and accessories. Users can also connect to two displays for multitasking, plus a full-size keyboard and mouse, headphones, and more. A USB-C port located on the front panel offers fast charging and quick data sharing.



Lenovo

## purposeful design

Simple, yet practical. Our thoughtful approach to design shows in the latest additions, like Smart Power On, which allows users to turn on ThinkCentre M75n using a keyboard shortcut. We also kept the placement of screw holes the same from gen to gen so the device can be mounted using existing fixtures.

## relentless innovation

We continually strive for perfection in what was already near perfect, like creating a 22 mm device with maximum mounting flexibility. For this, we employed laser drilling to achieve an even smaller printed circuit board assembly and created a tailored cooling system for the extreme narrow space.

## trusted quality

Lenovo's dedication to constantly improving product quality means rigorous testing for durability and reliability. In addition to our extensive in-house testing for real-world challenges, Lenovo ThinkCentre M75n is tested against MIL-STD methods and procedures.



## ThinkCentre M75n

### performance

#### PROCESSOR

Up to AMD Ryzen™ 5 PRO 3500U Processor

#### OPERATING SYSTEM

Windows 10 64-bit Preload and Drivers  
Windows 10 Home Chinese Language Edition 64  
Windows 10 Home Single Language 64  
Windows 10 Home 64  
Windows 10 Pro 64

#### MEMORY

8GB DDR4 2400MHz Dual Channel

#### STORAGE

Up to 2x 1TB PCIe SSD

#### POWER SUPPLY

65W 89% Adapter

### security

dTPM 2.0 chip  
Smart USB protection  
Chassis intrusion switch  
Kensington™ Cable Lock

### connectivity

#### FRONT PORTS

1x USB 3.2 Gen 2 + 1x USB 2.0  
1x USB 3.2 Type-C Gen 2  
1x Combo

#### REAR PORTS

1x USB 3.2 Gen 2 + 1x USB 2.0  
1x USB 3.2 Type-C Gen 2  
1x DP  
1x RJ45 LAN

#### EXPANSION SLOT

1x M.2 WiFi

### wifi

WiFi 2x2 AC

AMD  
RYZEN  
PRO

### design

Dimensions  
179 x 88 x 22 mm  
7.04 x 3.46 x 0.86 in

Weight  
505g/1.1lbs

MIL-810H  
Yes, 10 items

TIO Compatibility  
Yes, via TIO cube

### manageability

2 Independent Monitors  
Smart Power On  
Modern Standby (optional)

### certifications

Energy Star®  
EPEAT™ Silver  
TÜV Ultra Low Noise  
RoHS  
Ubuntu® Certified  
Redhat® Certified

### optional services

Lenovo offers a comprehensive portfolio of services to support and protect your ThinkCentre investment—so you can focus on your work, not your IT.

#### PREMIER SUPPORT

Provides direct access to skilled and experienced Lenovo technicians offering comprehensive hardware and software support. Gives you a consistent point of contact within Lenovo to ensure that your case resolution is professionally managed from start to finish.

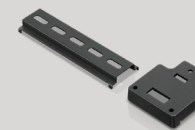
#### ACCIDENTAL DAMAGE PROTECTION (ADP)

Prevents the hassles of unexpected repair costs. Provides coverage for non-warranted damage incurred under normal operating conditions, such as minor spills, drops, or damage.

#### WARRANTY EXTENSION (1-YEAR BASE, UP TO 3 YEARS TOTAL)

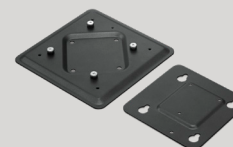
This fixed-term, fixed-cost service helps you accurately budget for PC expenses, protect your valuable investment, and lower the cost of ownership over time.

## accessories



#### THINKCENTRE NANO DIN RAIL MOUNT PN: 4XF0V81629

This compact and ruggedly designed mount securely attaches the Nano to a rack housing cabinet or frame with other DIN rail equipment for a clutter-free workspace.



#### THINKCENTRE NANO VESA MOUNT PN: 4XF0V81630

The VESA-standard mount attaches to any VESA-compatible equipment and can be used separately or combined with other options.



#### THINKCENTRE NANO MONITOR CLAMP PN: 4XF0V81633

Use this clamp to install a Nano unit to a monitor to save space.



#### THINKCENTRE NANO TIO MODULE BRACKET PN: 4XF0V81632

The Nano module bracket allows you to attach the Nano at the back of the display to form your own modular PC.

©2020 Lenovo. All rights reserved. Depending on many factors such as the processing capability of peripheral devices, file attributes, and other factors related to system configuration and operating environments, the actual transfer rate using the various USB connectors on this device will vary and is typically slower than the data rates as defined by the respective USB specifications: - 5 Gbit/s for USB 3.1 Gen1; 10 Gbit/s for USB 3.1 Gen2 & 20 Gbit/s for USB 3.2. These products are available while supplies last. Prices shown are subject to change without notice. For any questions concerning price, please contact your Lenovo Account Executive. Lenovo is not responsible for photographic or typographic errors. Warranty: For a copy of applicable warranties, write to: Warranty Information, 500 Park Offices Drive, RTP, NC 27709, Attn: Dept. ZPYA/B600. Lenovo makes no representation or warranty regarding third-party products or services. Trademarks: Lenovo, the Lenovo logo, Rescue and Recovery, ThinkPad, ThinkCentre, ThinkStation, ThinkVantage, and ThinkVision are trademarks or registered trademarks of Lenovo. Microsoft, Windows, and Vista are registered trademarks of Microsoft Corporation. ©2020 Advanced Micro Devices, Inc. All rights reserved. AMD, Radeon, Ryzen and combinations thereof are trademarks of Advanced Micro Devices, Inc. Other company, product and service names may be trademarks or service marks of others.

Lenovo