

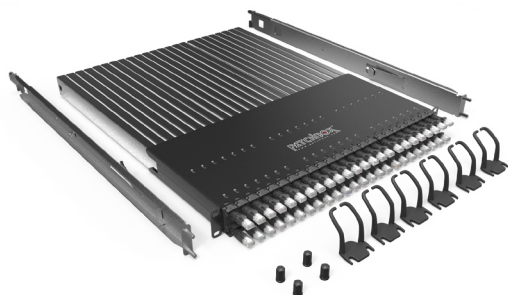
PATCHBOX Plus⁺

PATCHBOX Simplify IT

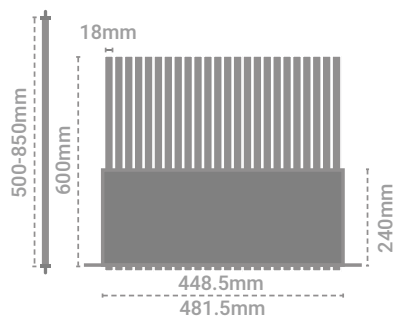
Network with
Confidence

5
YEAR

WARRANTY



PATCHBOX Plus+ System STP / UTP



TECHNICAL SPECIFICATIONS

STP CABLE

Cat.6 STP shielded, 250MHz, AWG36,
100% stranded copper, PVC jacket, 10Gbit ready

UTP CABLE

Cat.6 UTP unshielded, 250MHz, AWG30,
100% stranded copper, PVC jacket, 10Gbit ready

CONNECTOR

RJ45 shielded plug, pins gold plated, snagless booted

CABLE LENGTH

1.7m covers 26RU

FRAME

RAL9005 powder coated steel

CASSETTE PROFILES

Stainless steel, laser-welded

MOUNTING RAILS

Stainless steel, variable from 500mm to 850mm

PLASTIC PARTS

Polyoxymethylene POM

OPERATING TEMPERATURE RANGE

+10°C - +45°C

AMBIENT HUMIDITY NON-CONDENSING

10% - 95%

GROSS WEIGHT

11.86kg

PACKAGING DIMENSIONS

590mm x 760mm x 50mm WxDxH

HS-CODE

8544 4210

MADE IN THE EU

FOR CUSTOMERS IN AUSTRALIA & NEW ZEALAND

STP patch cords are compliant with AS/CA S008:2010
A1:2014

ITEMS INCLUDED

- 24 x PATCHBOX Plus+ STP / UTP Cassette with Cat.6 cable
- 1 x PATCHBOX Frame
- 6 x Patchcatch
- 2 x Adjustable mounting rails incl. HEX-Nuts
- 2 x DIN A5 tear-off ID Labels 96 Labels

STP SHIELDED VARIANTS

PRODUCT CODE	CABLE COLOR
P60STPXC6XX24K	Black
P60STPXC6XX24B	Blue
P60STPXC6XX24G	Green
P60STPXC6XX24R	Red
P60STPXC6XX24W	White
P60STPXC6XX24Y	Yellow
P60STPXC6X24GY	Grey
P60STPXC6XX24V	Violet

UTP UNSHIELDED VARIANTS

PRODUCT CODE	CABLE COLOR
P60UTPXC6XX24K	Black
P60UTPXC6XX24B	Blue
P60UTPXC6XX24G	Green
P60UTPXC6XX24R	Red
P60UTPXC6XX24W	White
P60UTPXC6XX24Y	Yellow
P60UTPXC6XX24V	Violet

patchbox.com

All rights reserved. Specifications subject to change. E&OE. © PATCHBOX. PATCHBOX GmbH, Hernalser Gürtel 1/12, 1170 Vienna, Austria. +43 1 99 71 960, mail@patchbox.com, www.patchbox.com. © PATCHBOX 2020

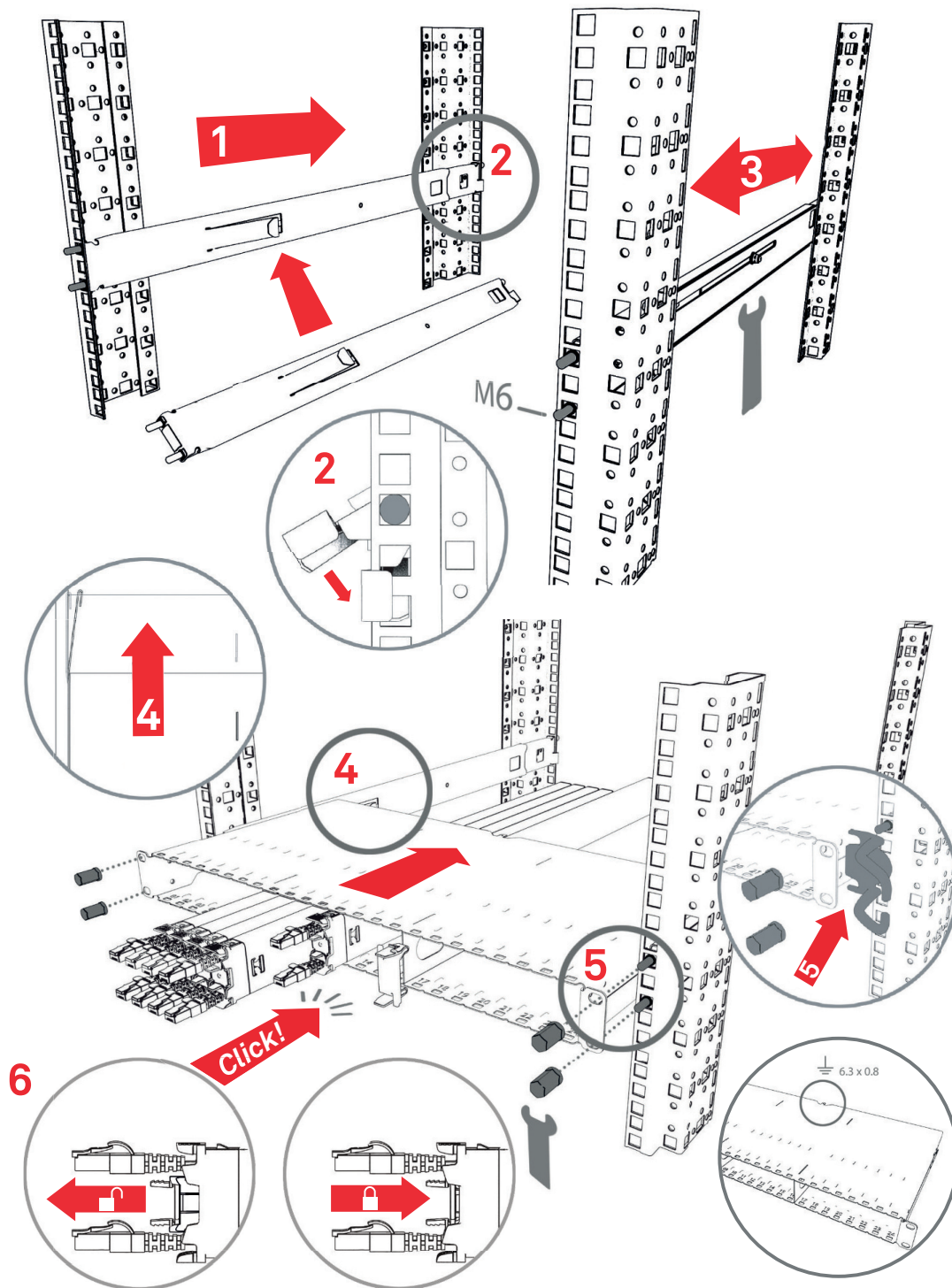
PATCHBOX Plus⁺

PATCHBOX Simplify IT

Network with
Confidence

5
YEAR

WARRANTY



PATCHBOX Plus⁺

PATCHBOX Simplify IT

Network with
Confidence

5
YEAR

WARRANTY



PATCHBOX Plus+ System OS2 / OM4

TECHNICAL SPECIFICATIONS

OS2 CABLE

OS2 RBS 9μ/125μ, G.657.A1, LSZH, Yellow OM4

OM4 CABLE

OM4 RBS 50μ/125μ, LSZH, Erika Violet

CONNECTOR

LC Duplex - LC Duplex / LC Duplex - SC Duplex;
others on request.

CABLE LENGTH

1.7m covers 26RU

FRAME

RAL9005 powder coated steel

CASSETTE PROFILES

Stainless steel, laser-welded

MOUNTING RAILS

Stainless steel, variable from 500mm to 850mm

PLASTIC PARTS

Polyoxymethylene POM

OPERATING TEMPERATURE RANGE

+10°C - +45°C

AMBIENT HUMIDITY NON-CONDENSING:

10% - 95%

GROSS WEIGHT

11.86kg

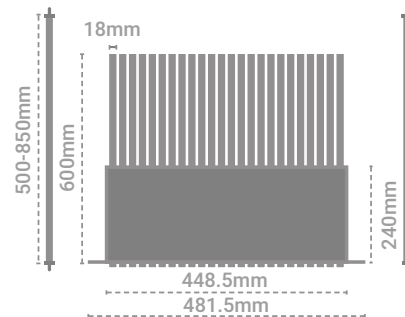
PACKAGING DIMENSIONS

590mm x 760mm x 50mm WxDxH

HS-CODE

8544 4210

MADE IN THE EU



ITEMS INCLUDED

- 24 x PATCHBOX Plus+ OS2 / OM4 Cassette with LC-LC /LC-SC connector
- 1 x PATCHBOX Frame
- 6 x Patchcatch
- 2 x Adjustable mounting rails incl. HEX-Nuts
- 2 x DIN A5 tear-off ID Labels 96 Labels

OS2 VARIANTS

PRODUCT CODE	CONNECTOR TYPE
P60SMAOS21124Y	LC-LC
P60SMAOS21224Y	LC-SC

OM4 VARIANTS

PRODUCT CODE	CONNECTOR TYPE
P60MMAOM41124E	LC-LC
P60MMAOM41224E	LC-SC

patchbox.com

All rights reserved. Specifications subject to change. E&OE. © PATCHBOX. PATCHBOX GmbH, Hernalser Gürtel 1/12, 1170 Vienna, Austria. +43 1 99 71 960, mail@patchbox.com, www.patchbox.com. © PATCHBOX 2020

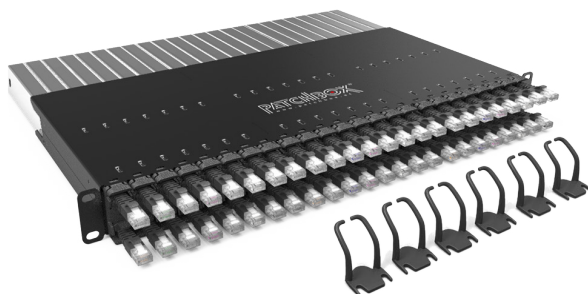
PATCHBOX 365

PATCHBOX Simplify IT

Network with
Confidence

5
YEAR

WARRANTY



PATCHBOX 365 System STP / UTP

TECHNICAL SPECIFICATIONS

STP CABLE

Cat.6 STP shielded, 250MHz, AWG36,
100% stranded copper, PVC jacket, 10Gbit ready

UTP CABLE

Cat.6 UTP unshielded, 250MHz, AWG30,
100% stranded copper, PVC jacket, 10Gbit ready

CONNECTOR

RJ45 shielded plug, pins gold plated, snagless booted

CABLE LENGTH

0.8m covers 10RU

FRAME

RAL9005 powder coated steel

CASSETTE PROFILES

Stainless steel, laser-welded

PLASTIC PARTS

Polyoxymethylene POM

OPERATING TEMPERATURE RANGE

+10°C - +45°C

AMBIENT HUMIDITY NON-CONDENSING

10% - 95%

GROSS WEIGHT

8.6kg

PACKAGING DIMENSIONS

590mm x 760mm x 50mm WxDxH

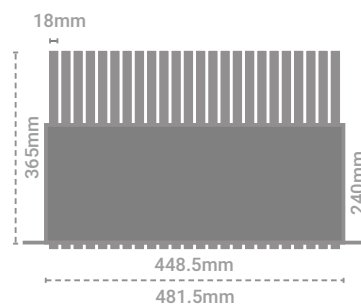
HS-CODE

8544 4210

MADE IN THE EU

FOR CUSTOMERS IN AUSTRALIA & NEW ZEALAND

STP patch cords are compliant with AS/CA S008:2010
A1:2014



ITEMS INCLUDED

- 24 x PATCHBOX 365 STP / UTP Cassette with Cat.6 cable
- 1 x PATCHBOX Frame
- 6 x Patchcatch
- 2 x DIN A5 tear-off ID Labels 96 Labels

STP - SHIELDED VARIANTS

PRODUCT CODE	CABLE COLOR
P36STPXC6XX24K	Black
P36STPXC6XX24B	Blue
P36STPXC6XX24G	Green
P36STPXC6XX24R	Red
P36STPXC6XX24W	White
P36STPXC6XX24Y	Yellow
P36STPXC6XX24GY	Grey
P36STPXC6XX24V	Violet

UTP - UNSHIELDED VARIANTS

PRODUCT CODE	CABLE COLOR
P36UTPXC6XX24K	Black
P36UTPXC6XX24B	Blue
P36UTPXC6XX24G	Green
P36UTPXC6XX24R	Red
P36UTPXC6XX24W	White
P36UTPXC6XX24Y	Yellow
P36UTPXC6XX24V	Violet

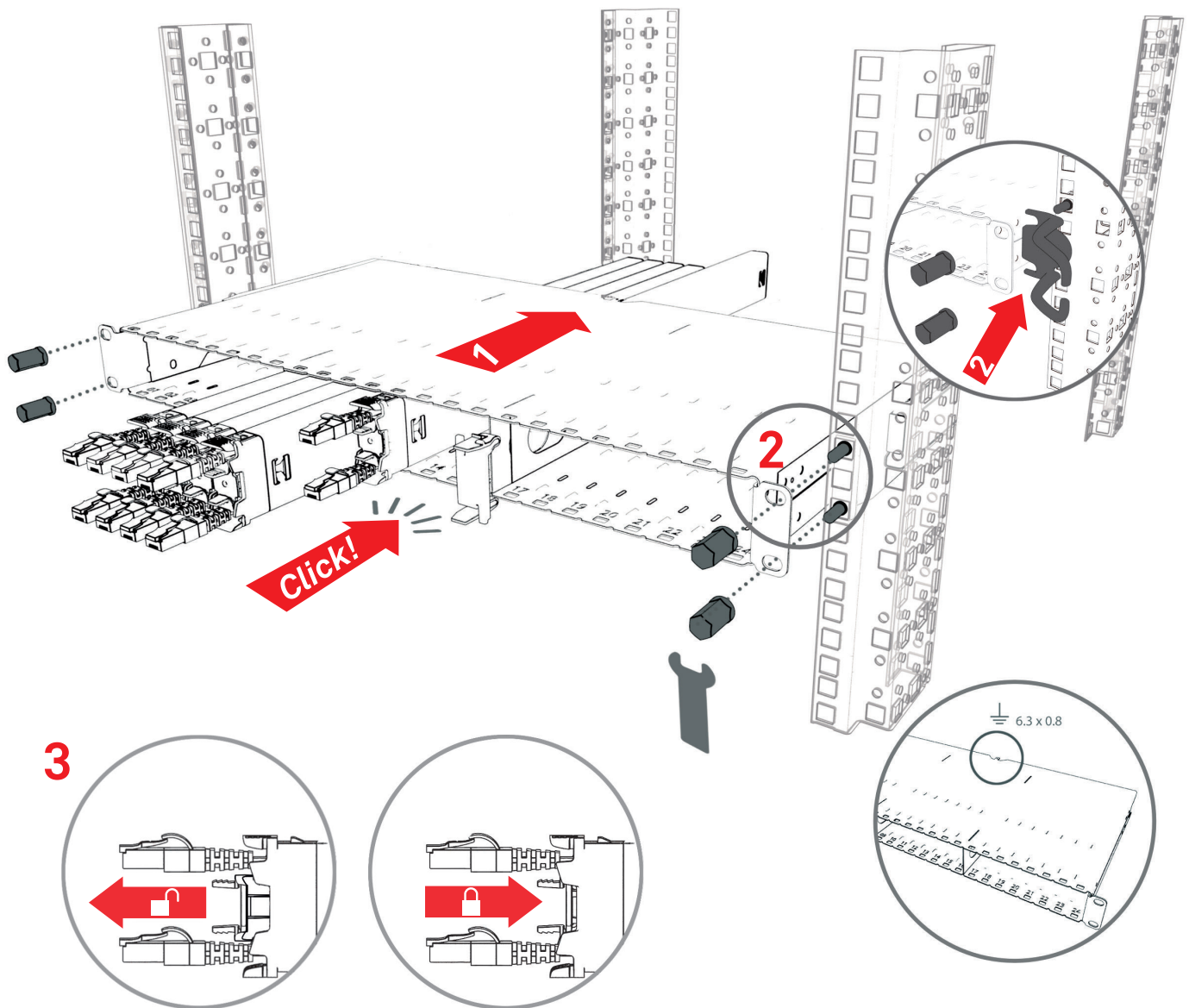
PATCHBOX 365

PATCHBOX Simplify IT

Network with
Confidence

5
YEAR

WARRANTY



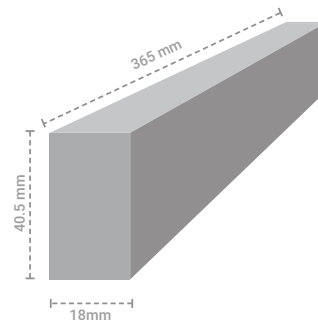
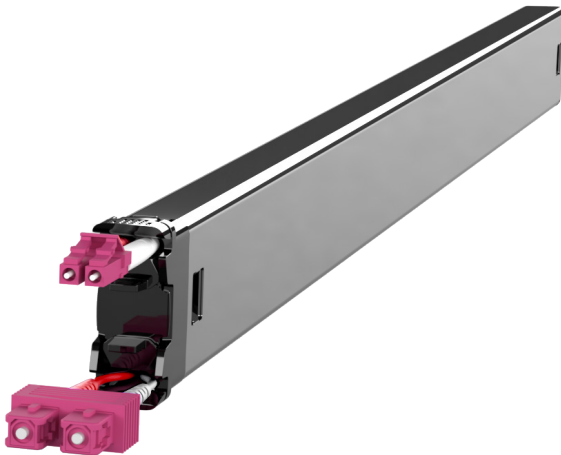
PATCHBOX Plus⁺

PATCHBOX Simplify IT

Network with
Confidence

5
YEAR

WARRANTY



PATCHBOX Plus+ Cassettes OS2 / OM4

TECHNICAL SPECIFICATIONS

OS2 CABLE

OS2 RBS 9μ/125μ, G.657.A1, LSZH, Yellow

OM4 CABLE

OM4 RBS 50μ/125μ, LSZH, Erika Violet

CONNECTOR

LC Duplex - LC Duplex / LC Duplex - SC Duplex

CABLE LENGTH

1.7m covers 26RU

CASSETTE PROFILES

Stainless steel, laser-welded

PLASTIC PARTS

Polyoxymethylene POM

OPERATING TEMPERATURE RANGE

+10°C - +45°C

AMBIENT HUMIDITY NON-CONDENSING

10% - 95%

GROSS WEIGHT

0.4kg

PACKAGING DIMENSIONS

69mm x 50mm x 50mm WxDxH

HS-CODE

8544 4210

MADE IN THE EU

ITEMS INCLUDED

1 x PATCHBOX Plus+ OS2 / OM4 Cassette with
LC-LC /LC-SC connector

OS2 VARIANTS

PRODUCT CODE	CONNECTOR TYPE
C60SMAOS211X1Y	LC-LC
C60SMAOS212X1Y	LC-SC

OM4 VARIANTS

PRODUCT CODE	CONNECTOR TYPE
C60MMAOM411X1E	LC-LC
C60MMAOM412X1E	LC-SC

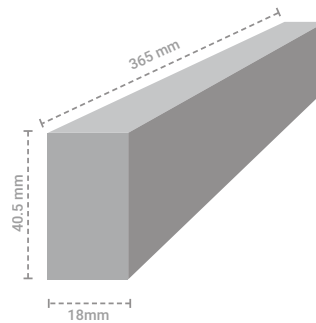
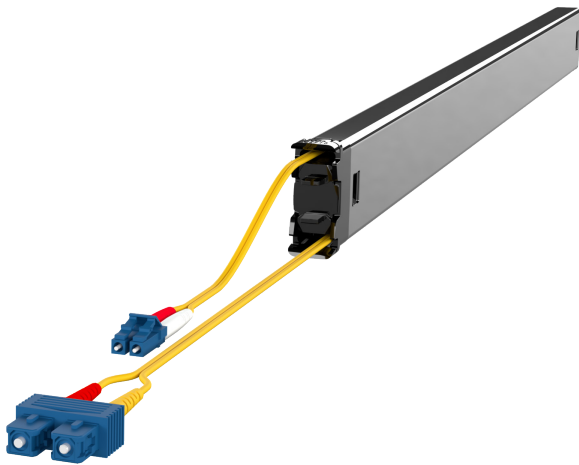
PATCHBOX Plus⁺

PATCHBOX Simplify IT

Network with
Confidence

5
YEAR

WARRANTY



PATCHBOX Plus+ Long Range Cassettes - OS2 / OM4

TECHNICAL SPECIFICATIONS

OS2 CABLE

OS2 RBS 9μ/125μ, G.657.A1, LSZH, Yellow

OM4 CABLE

OM4 RBS 50μ/125μ, LSZH, Erika Violet

CONNECTOR

LC Duplex - LC Duplex / LC Duplex - SC Duplex

CABLE LENGTH

2.7m extractable / 1m over length non-retractable,
covers 48RU from mid-mid

CASSETTE PROFILES

Stainless steel, laser-welded

PLASTIC PARTS

Polyoxymethylene POM

OPERATING TEMPERATURE RANGE

+10°C - +45°C

AMBIENT HUMIDITY NON-CONDENSING

10% - 95%

GROSS WEIGHT

0.42kg

PACKAGING DIMENSIONS

69mm x 50mm x 50mm WxDxH

HS-CODE

8544 4210

MADE IN THE EU

ITEMS INCLUDED

1 x PATCHBOX Plus+ OS2 / OM4 Long Range
Cassette with LC-LC / LC-SC connector

OS2 VARIANTS

PRODUCT CODE	CONNECTOR TYPE
C60SMAOS21131Y	LC-LC
C60SMAOS21231Y	LC-SC

OM4 VARIANTS

PRODUCT CODE	CONNECTOR TYPE
C60MMAOM41131E	LC-LC
C60MMAOM41231E	LC-SC

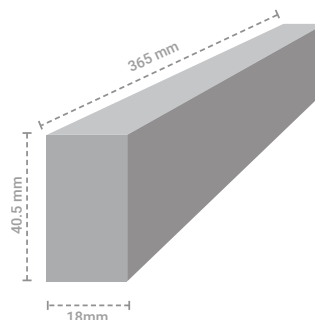
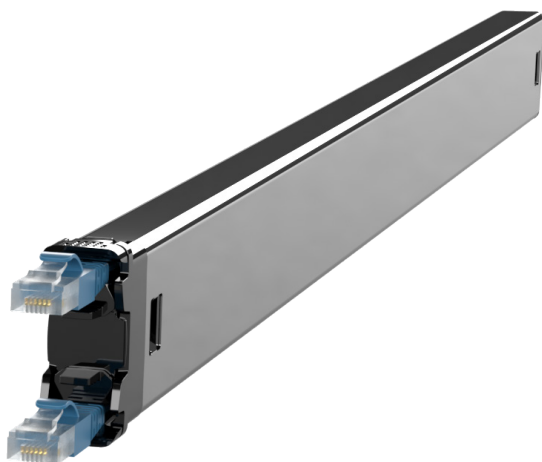
PATCHBOX Plus⁺

PATCHBOX Simplify IT

Network with
Confidence

5
YEAR

WARRANTY



PATCHBOX Plus+ Cassettes STP / UTP

TECHNICAL SPECIFICATIONS

STP CABLE

Cat.6 STP shielded, 250MHz, AWG36,
100% stranded copper, PVC jacket, 10Gbit ready

UTP CABLE

Cat.6 UTP unshielded, 250MHz, AWG30,
100% stranded copper, PVC jacket, 10Gbit ready

CONNECTOR

RJ45 shielded plug, pins gold plated, snagless booted

CABLE LENGTH

1.7m covers 26RU

CASSETTE PROFILES

Stainless steel, laser-welded

PLASTIC PARTS

Polyoxymethylene POM

OPERATING TEMPERATURE RANGE

+10°C - +45°C

AMBIENT HUMIDITY NON-CONDENSING

10% - 95%

GROSS WEIGHT

0.4kg

PACKAGING DIMENSIONS

69mm x 50mm x 50mm WxDxH

HS-CODE

8544 4210

MADE IN THE EU

FOR CUSTOMERS IN AUSTRALIA & NEW ZEALAND

STP patch cords are compliant with AS/CA S008:2010
A1:2014

ITEMS INCLUDED

1 x PATCHBOX Plus+ STP / UTP Cassette with
Cat.6 cable

STP - SHIELDED VARIANTS

PRODUCT CODE	CABLE COLOR
C60STPXC6XXX1K	Black
C60STPXC6XXX1B	Blue
C60STPXC6XXX1G	Green
C60STPXC6XXX1R	Red
C60STPXC6XXX1W	White
C60STPXC6XXX1Y	Yellow
C60STPXC6XX1GY	Grey
C60STPXC6XXX1V	Violet

UTP - UNSHIELDED VARIANTS

PRODUCT CODE	CABLE COLOR
C60UTPXC6XXX1K	Black
C60UTPXC6XXX1B	Blue
C60UTPXC6XXX1G	Green
C60UTPXC6XXX1R	Red
C60UTPXC6XXX1W	White
C60UTPXC6XXX1Y	Yellow
P60UTPXC6XX24V	Violet

patchbox.com

All rights reserved. Specifications subject to change. E&OE. © PATCHBOX. PATCHBOX GmbH, Hernalser Gürtel 1/12, 1170 Vienna, Austria. +43 1 99 71 960, mail@patchbox.com, www.patchbox.com. © PATCHBOX 2020

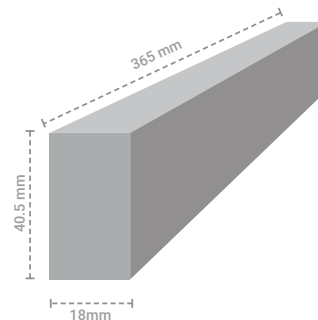
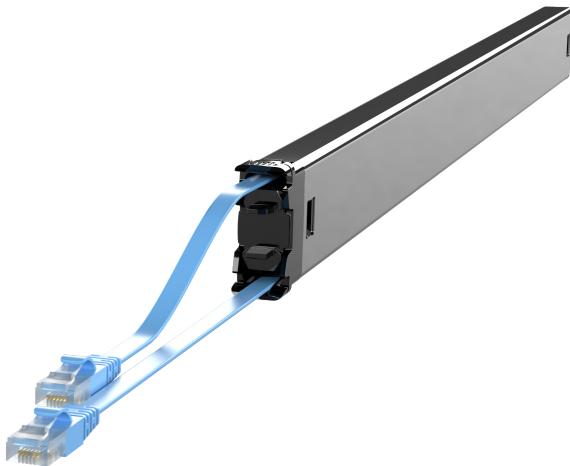
PATCHBOX Plus⁺

PATCHBOX Simplify IT

Network with
Confidence

5
YEAR

WARRANTY



PATCHBOX Plus+ Long Range Cassettes - STP / UTP

TECHNICAL SPECIFICATIONS

STP CABLE

Cat.6 STP shielded, 250MHz, AWG36,
100% stranded copper, PVC jacket, 10Gbit ready

UTP CABLE

Cat.6 UTP unshielded, 250MHz, AWG30,
100% stranded copper, PVC jacket, 10Gbit ready

CONNECTOR

RJ45 shielded plug, pins gold plated, snagless booted

CABLE LENGTH

2.7m extractable / 1m over, length non-retractable,
covers 48RU from mid-mid

CASSETTE PROFILES

Stainless steel, laser-welded

PLASTIC PARTS

Polyoxymethylene POM

OPERATING TEMPERATURE RANGE

+10°C - +45°C

AMBIENT HUMIDITY NON-CONDENSING

10% - 95%

GROSS WEIGHT

0.42kg

PACKAGING DIMENSIONS

69mm x 50mm x 50mm WxDxH

HS-CODE

8544 4210

MADE IN THE EU # FOR CUSTOMERS IN AUSTRALIA & NEW ZEALAND

STP patch cords are compliant with AS/CA S008:2010
A1:2014

ITEMS INCLUDED

1 x PATCHBOX Plus+ STP / UTP
Long Range Cassette with Cat.6 cable

STP - SHIELDED VARIANTS

PRODUCT CODE	CABLE COLOR
C60STPXC6XX31K	Black
C60STPXC6XX31B	Blue
C60STPXC6XX31G	Green
C60STPXC6XX31R	Red
C60STPXC6XX31W	White
C60STPXC6XX31Y	Yellow
C60STPXC6X31GY	Grey
C60STPXC6XX31V	Violet

UTP - UNSHIELDED VARIANTS

PRODUCT CODE	CABLE COLOR
C60UTPXC6XX31K	Black
C60UTPXC6XX31B	Blue
C60UTPXC6XX31G	Green
C60UTPXC6XX31R	Red
C60UTPXC6XX31W	White
C60UTPXC6XX31Y	Yellow
C60UTPXC6XX31V	Violet

patchbox.com

All rights reserved. Specifications subject to change. E&OE. © PATCHBOX. PATCHBOX GmbH, Hernalser Gürtel 1/12, 1170 Vienna, Austria. +43 1 99 71 960, mail@patchbox.com, www.patchbox.com. © PATCHBOX 2020

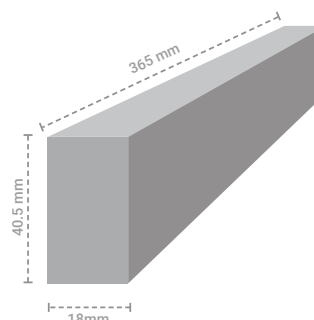
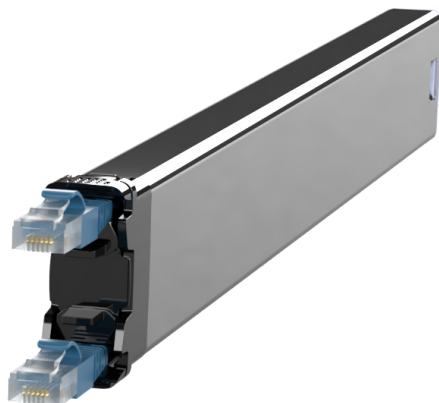
PATCHBOX 365

PATCHBOX Simplify IT

Network with
Confidence

5
YEAR

WARRANTY



PATCHBOX 365 Cassettes STP / UTP

TECHNICAL SPECIFICATIONS

OS2 CABLE

OS2 RBS 9μ/125μ, G.657.A1, LSZH, Yellow

OM4 CABLE

OM4 RBS 50μ/125μ, LSZH, Erika Violet

CONNECTOR

LC Duplex - LC Duplex / LC Duplex - SC Duplex

CABLE LENGTH

1.7m covers 26RU

CASSETTE PROFILES

Stainless steel, laser-welded

PLASTIC PARTS

Polyoxymethylene POM

OPERATING TEMPERATURE RANGE

+10°C - +45°C

AMBIENT HUMIDITY NON-CONDENSING

10% - 95%

GROSS WEIGHT

0.4kg

PACKAGING DIMENSIONS

69mm x 50mm x 50mm WxDxH

HS-CODE

8544 4210

MADE IN THE EU

ITEMS INCLUDED

1 x PATCHBOX 365 STP / UTP Cassette with
Cat.6 cable

STP - SHIELDED VARIANTS

PRODUCT CODE	CABLE COLOR
C36STPXC6XXX1K	Black
C36STPXC6XXX1B	Blue
C36STPXC6XXX1G	Green
C36STPXC6XXX1R	Red
C36STPXC6XXX1W	White
C36STPXC6XXX1Y	Yellow
C36STPXC6XX1GY	Grey

UTP - UNSHIELDED VARIANTS

PRODUCT CODE	CABLE COLOR
C36UTPXC6XXX1K	Black
C36UTPXC6XXX1B	Blue
C36UTPXC6XXX1G	Green
C36UTPXC6XXX1R	Red
C36UTPXC6XXX1W	White
C36UTPXC6XXX1Y	Yellow
C36UTPXC6XXX1V	Violet

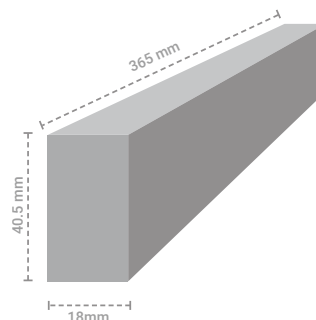
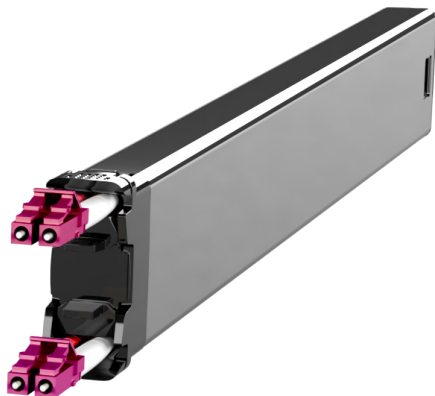
PATCHBOX 365

PATCHBOX Simplify IT

Network with
Confidence

5
YEAR

WARRANTY



PATCHBOX 365 Cassettes OS2 / OM4

TECHNICAL SPECIFICATIONS

OS2 CABLE

OS2 RBS 9μ/125μ, G.657.A1, LSZH, Yellow

OM4 CABLE

OM4 RBS 50μ/125μ, LSZH, Erika Violet

CONNECTOR

LC Duplex - LC Duplex / LC Duplex - SC Duplex

CABLE LENGTH

1.7m covers 26RU

CASSETTE PROFILES

Stainless steel, laser-welded

PLASTIC PARTS

Polyoxymethylene POM

OPERATING TEMPERATURE RANGE

+10°C - +45°C

AMBIENT HUMIDITY NON-CONDENSING

10% - 95%

GROSS WEIGHT

0.4kg

PACKAGING DIMENSIONS

69mm x 50mm x 50mm WxDxH

HS-CODE

8544 4210

MADE IN THE EU

ITEMS INCLUDED

1 x PATCHBOX 365 OS2 / OM4 Cassette with
LC-LC /LC-SC connector

OS2 VARIANTS

PRODUCT CODE	CONNECTOR TYPE
C36SMAOS211X1Y	LC-LC
C36SMAOS212X1Y	LC-SC

OM4 VARIANTS

PRODUCT CODE	CONNECTOR TYPE
C36MMAOM411X1E	LC-LC
C36MMAOM412X1E	LC-SC

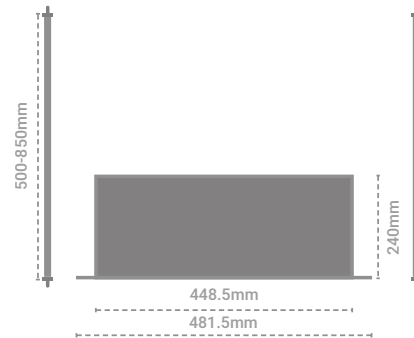
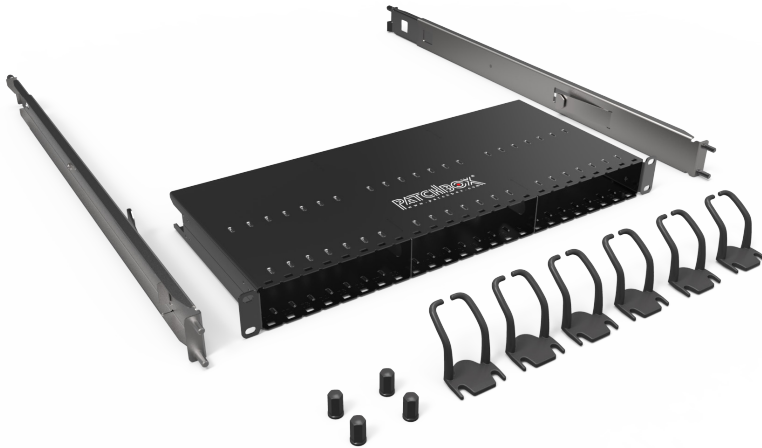
PATCHBOX Plus⁺

PATCHBOX Simplify IT

Network with
Confidence

5
YEAR

WARRANTY



PATCHBOX Plus+ Frame

TECHNICAL SPECIFICATIONS

FRAME

RAL9005 powder coated steel

PLASTIC PARTS

Polyoxymethylene POM

OPERATING TEMPERATURE RANGE

+10°C - +45°C

AMBIENT HUMIDITY NON-CONDENSING

10% - 95%

GROSS WEIGHT

4.18kg

MOUNTING RAILS

Stainless Steel, 500mm to 850mm

DIMENSIONS

481.5 - 448.5mm x 500 - 850mm x 50mm WxDxH

PACKAGING DIMENSIONS

590mm x 760mm x 50mm WxDxH

HS-CODE

8538 9099

MADE IN THE EU

ITEMS INCLUDED

- 1 x PATCHBOX Frame
- 2 x Mounting rails incl. HEX-Nuts
- 6 x Patchcatch
- 2 x DIN A5 tear-off ID Labels 96 Labels

PRODUCT CODE

PBXFRAME

PATCHBOX 365

PATCHBOX Simplify IT

Network with
Confidence

5
YEAR

WARRANTY



PATCHBOX 365 Frame

TECHNICAL SPECIFICATIONS

FRAME

RAL9005 powder coated steel

PLASTIC PARTS

Polyoxymethylene POM

MOUNTING RAILS

Stainless Steel, 500mm to 850mm from 19" rail to 19" rail

OPERATING TEMPERATURE RANGE

+10°C - +45°C

AMBIENT HUMIDITY NON-CONDENSING

10% - 95%

GROSS WEIGHT

3.15kg

DIMENSIONS

481.5 - 448.5mm x 240mm x 50mm WxDxH

PACKAGING DIMENSIONS

590mm x 760mm x 50mm WxDxH

HS-CODE

8538 9099

PRODUCT COMPLIES WITH ROHS AND CE

MADE IN THE EU

ITEMS INCLUDED

- 1 x PATCHBOX Frame
- 6 x Patchcatch
- 2 x DIN A5 tear-off ID Labels 96 Labels

STP SHIELDED VARIANTS

PBXFRAME365

SETUP.EXE

PATCHBOX Simplify IT

Network with
Confidence

**LIFE
TIME**
WARRANTY



Setup.exe

DESCRIPTION

The Setup.exe enables one technician to do the job of two. The Setup.exe secures the weight of equipment, such as switches, in server and network racks until they are securely screwed in. Mounted inside out of a rack the Setup.exe creates the ideal workspace to place a laptop during configuration or terminating a patch panel.

TECHNICAL SPECIFICATIONS

DIMENSIONS FOLDED

55mm x 460mm x 45mm WxDxH

DIMENSIONS OPENED

482.6mm x 380mm x 45mm WxDxH

MATERIALS

Aluminium, Stainless steel, powder coated steel

GROSS WEIGHT

0.88kg

PACKAGING DIMENSIONS

51mm x 600mm x 55mm WxDxH

HS-CODE

8538 9099

MADE IN GERMANY

ITEMS INCLUDED

1 x Setup.exe

PRODUCT CODE

PBXEXE

[patchbox.com](https://www.patchbox.com)

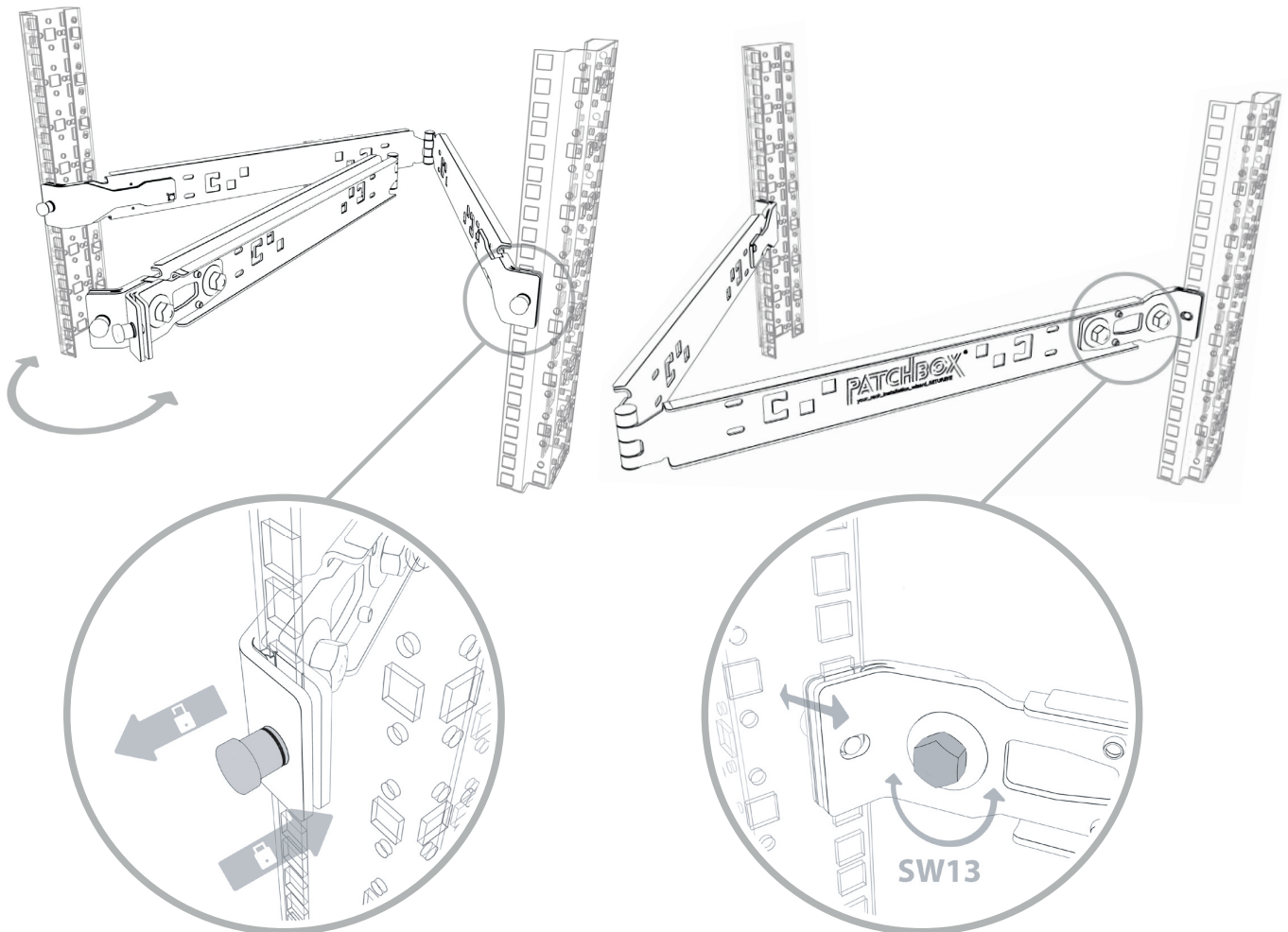
All rights reserved. Specifications subject to change. E&OE. © PATCHBOX. PATCHBOX GmbH, Hernalser Gürtel 1/12, 1170 Vienna, Austria. +43 1 99 71 960, mail@patchbox.com, www.patchbox.com. © PATCHBOX 2020

SETUP.EXE

PATCHBOX Simplify IT

Network with
Confidence

**LIFE
TIME**
WARRANTY

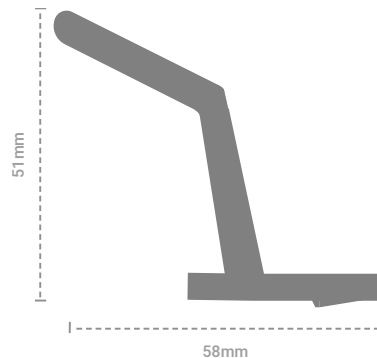


Setup.exe - manual

Warning: Please clarify the load capacity of the server rack with the manufacturer. Always check assembly aid for tightness before loading. Assembly aid needs to be free from contamination, such as oil and lubricants. Make sure all nuts are tight. Before loading, make sure that the locking pins are fully inserted. If necessary, remove the extended locking bolts with one turn. Loads must not be pushed over the joint of the assembly aid (risk of overloading). Loads must be protected from the risk of damage caused by falling down through appropriate additional measures. The mounting aid includes magnets. Keep away from data carriers, magnetic storage devices and sensitive electronic devices. Supports <15kg. Keep away from children, risk of swallowing small parts.

PATCHBOX Patchcatch

PATCHBOX Simplify IT



PATCHBOX Patchcatch

DESCRIPTION

Our innovative cable organizer with zero rack units - the Patchcatch 0RU - can simply be mounted under the mounting brackets of switches and patch panels. Compared to conventional horizontal cable management it does not take any additional space in a network cabinet. All patch cords - Cat6 and fibre optics - are guided to the side of the RU and are patched to keep the cabinet nice and tidy. No more cable spaghetti! The Patchcatch works with conventional patch cords as good as with the PATCHBOX. A great alternative to conventional cable management. Every PATCHBOX System as well as PATCHBOX Frame includes 6 Patchcatches.

TECHNICAL SPECIFICATIONS

PLASTIC PARTS

Polyoxymethylene POM

OPERATING TEMPERATURE RANGE

+10°C - +45°C

AMBIENT HUMIDITY NON-CONDENSING

10% - 95%

WEIGHT

0.06kg

PACKAGING DIMENSIONS

95mm x 102mm x 40mm WxDxH

HS-CODE

8538 9099

MADE IN THE EU

ITEMS INCLUDED

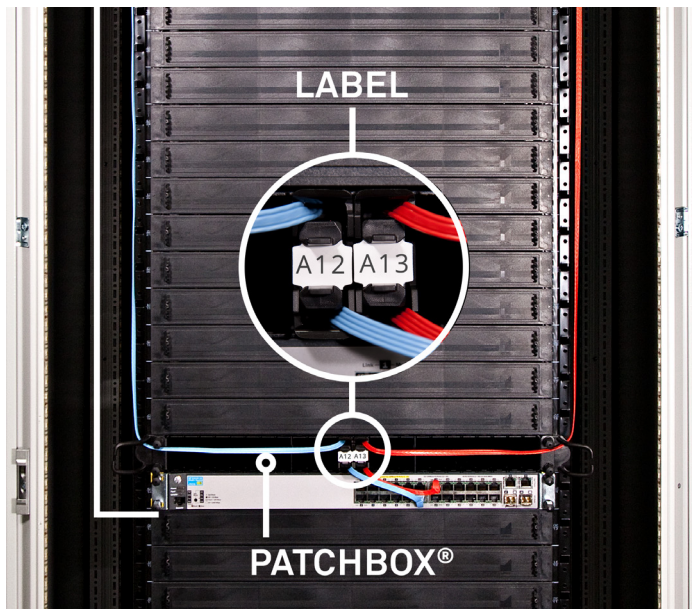
4 x Patchcatch

PRODUCT CODE

PBCX8K

PATCHBOX ID Labels

PATCHBOX Simplify IT



PATCHBOX ID Labels

DESCRIPTION

The ID Labels are simply slid onto the cable stopper on the Cassette. When the PATCHBOX is mounted above or underneath a switch you already have a logical assignment of the Cassettes to the switch ports. With the patch panel port written on the ID Label you see all your connections with an blink of the eye.

TECHNICAL SPECIFICATIONS

WEIGHT

0.02kg

PACKAGING DIMENSIONS

160mm x 235mm x 20mm WxDxH

HS-CODE

8538 9099

MADE IN THE EU

ITEMS INCLUDED

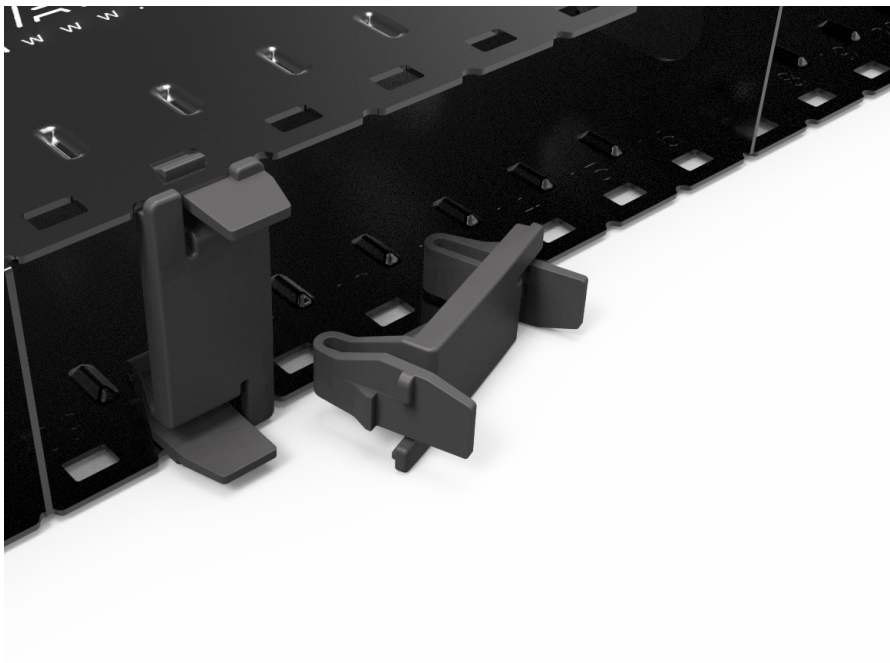
2 x DIN A5 tear-off ID Labels 96 Labels

PRODUCT CODE

IDLABELW

PATCHBOX Blind Panel

PATCHBOX Simplify IT



PATCHBOX Blind Panel

DESCRIPTION

The Blind Panels can be used to cover up unused slots from your PATCHBOX Plus+. This ensures air circulation within your cabinet remains optimised and keeps cool what needs to be kept cool. Simply clip them into the frame and reuse them anytime in another slot.

TECHNICAL SPECIFICATIONS

PLASTIC PARTS

Polyoxymethylene POM

OPERATING TEMPERATURE RANGE

+10°C - +45°C

AMBIENT HUMIDITY NON-CONDENSING

10% - 95%

WEIGHT

0.06kg

PACKAGING DIMENSIONS

95mm x 102mm x 40mm WxDxH

HS-CODE

8538 9099

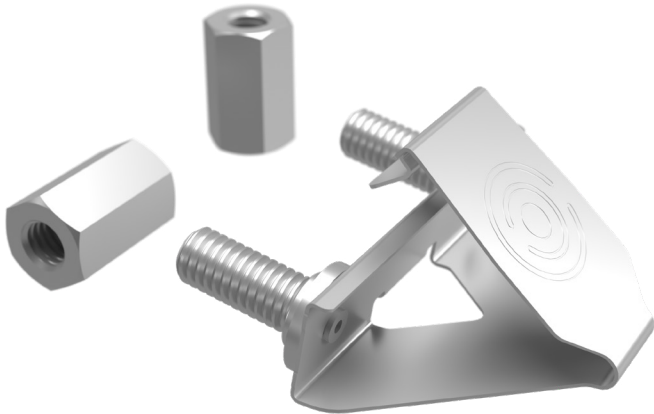
MADE IN THE EU

ITEMS INCLUDED

10 x Blind Panels

PRODUCT CODE

PBXBLIND



/dev/mount

DESCRIPTION

The /dev/mount is the fastest solution replacing conventional cage nuts used in server and network racks. Its faster mounting capabilities increases productivity of mounting 19" equipment. The /dev/mount holds equipment securely in place before the nuts are fastened, making hardware mounting a faster and more secure task.

TECHNICAL SPECIFICATIONS

PROFILE

Spring steel / aluminium

OPERATING TEMPERATURE RANGE

+10°C - +45°C

AMBIENT HUMIDITY NON-CONDENSING

10% - 95%

WEIGHT

1.33kg

PACKAGING DIMENSIONS

23.5mm x 155mm x 70mm WxDxH

HS-CODE

7318 1900

MADE IN GERMANY

ITEMS INCLUDED

50 x /dev/mount

100 x Dual-sided / reversible Hex-nuts

PRODUCT CODE

DVMNT50

COMPATIBILITY WITH 19" RAILS

The /dev/mount is compatible with 19" rails with square punched holes that are capable of installing standard standard server rails.

