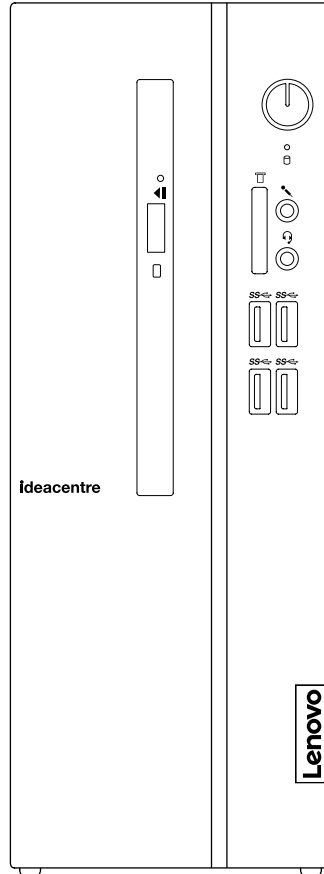


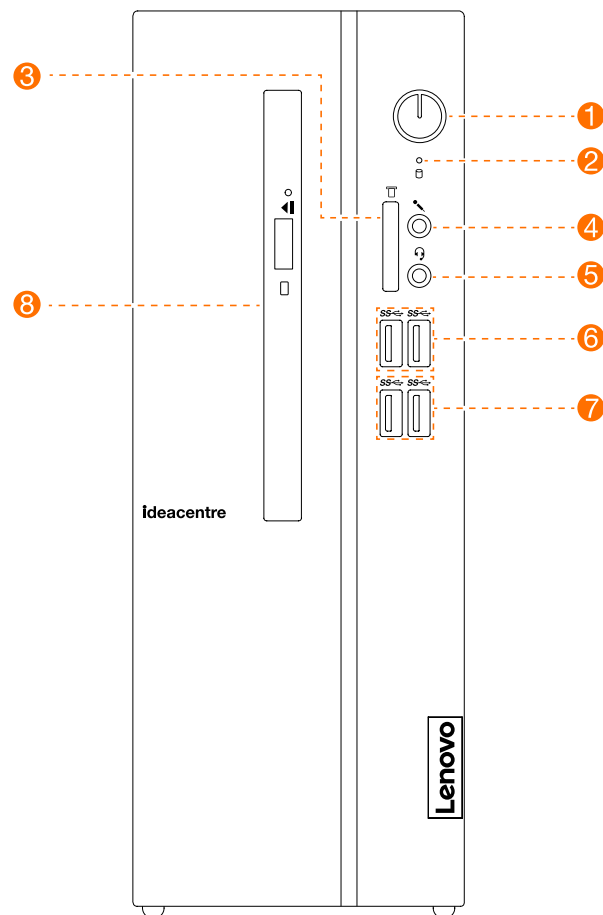
Lenovo

ideacentre 510S Desktop PC User Guide

Machine Type (MT): 90LX [ideacentre 510S-07ICK/Energy Star]



Front view of the computer

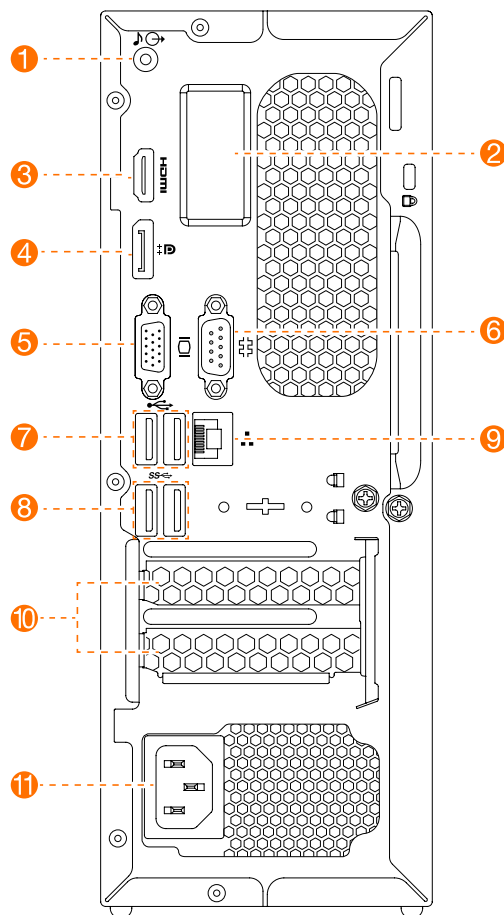


- | | |
|--|---|
| ① Power button | ⑤ Combo audio jack* |
| ② Hard disk drive indicator | ⑥ USB 3.0 connectors (2) |
| ③ Memory card reader
(selected models only) | ⑦ USB 3.0 connectors (2) |
| ④ Microphone connector | ⑧ Optical Drive
(selected models only) |

* Combo audio jack: Used to connect headsets.

ATTENTION: Be sure not to block any air vents on the computer. Blocked air vents may cause thermal problems.

Rear view of the computer



- | | |
|---|--------------------------|
| ❶ Audio connector | ❹ Serial connector |
| ❷ Wi-Fi antenna
(selected models only) | ❺ USB 2.0 connectors (2) |
| ❸ HDMI-out connector | ❻ USB 3.0 connectors (2) |
| ❹ DisplayPort® connector | ❼ Ethernet connector |
| ❺ On-board VGA connector | ❽ Expansion card slots |
| | ❾ Power connector |

NOTE: If your model has two VGA monitor connectors, be sure to use the connector on the graphics adapter.

ATTENTION: Do not open the Wi-Fi antenna cover.

Safety information for replacing CRUs

Do not open your computer or attempt any repairs before reading the “Important safety information” in the *Safety, Warranty, Environment, Recycling Information Guide* and *Important Product Information Guide* that was included with your computer.

If you no longer have this copy of the *Safety, Warranty, Environment, Recycling Information Guide* and *Important Product Information Guide*, you can obtain one online from the website at <http://www.lenovo.com/UserManuals>.

Pre-disassembly instructions

Before proceeding with the disassembly procedure, make sure that you do the following:

1. Turn off the power to the system and all peripherals.
2. Unplug all power and signal cables from the computer.
3. Place the system on a flat, stable surface.

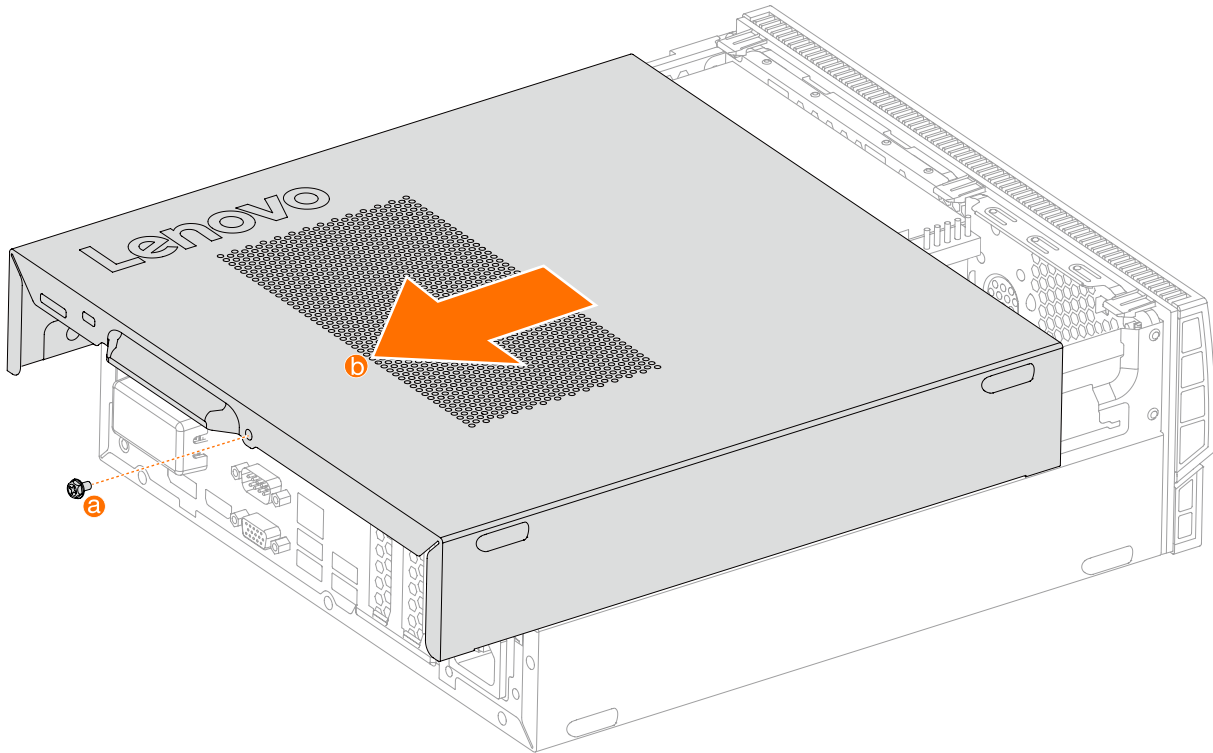
CRUs for your computer include:

- keyboard
- mouse
- hard disk drive
- solid state drive
- optical drive
- card reader module
- PCI express adapter
- power supply
- memory module
- coin-cell battery

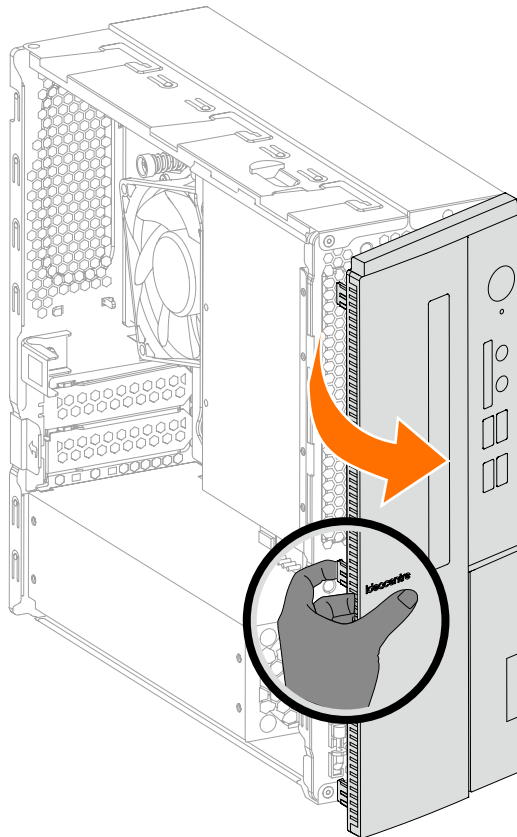
This part contains instructions for replacing the following parts:

- Card reader module (Follow steps: 1 2 3)
- Optical drive (Follow steps: 1 2 4)
- Hard disk drive (Follow steps: 1 2 4 5)
- Solid state drive (Follow steps: 1 6)
- PCI express adapter (Follow steps: 1 7)
- Power supply (Follow steps: 1 8)
- Memory module (Follow steps: 1 9)
- Coin-cell battery (Follow steps: 1 10)

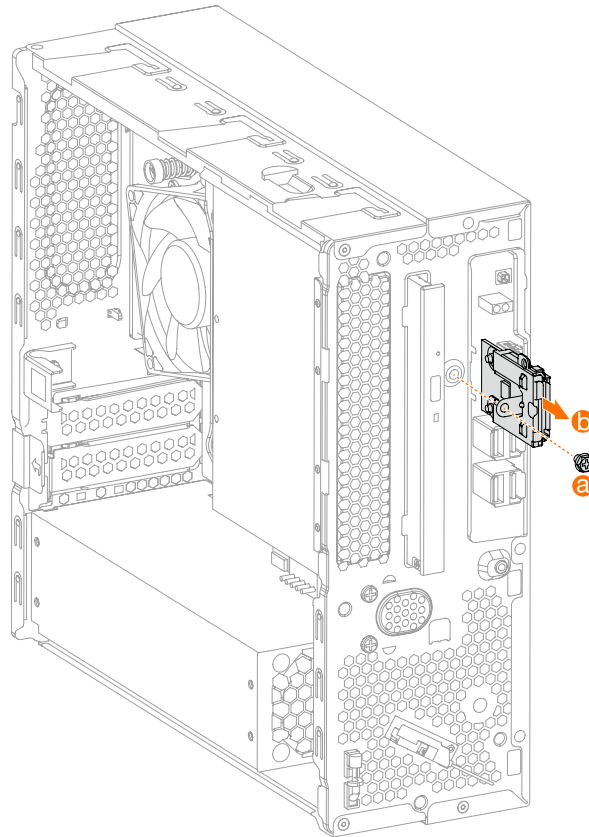
1 Removing the computer cover



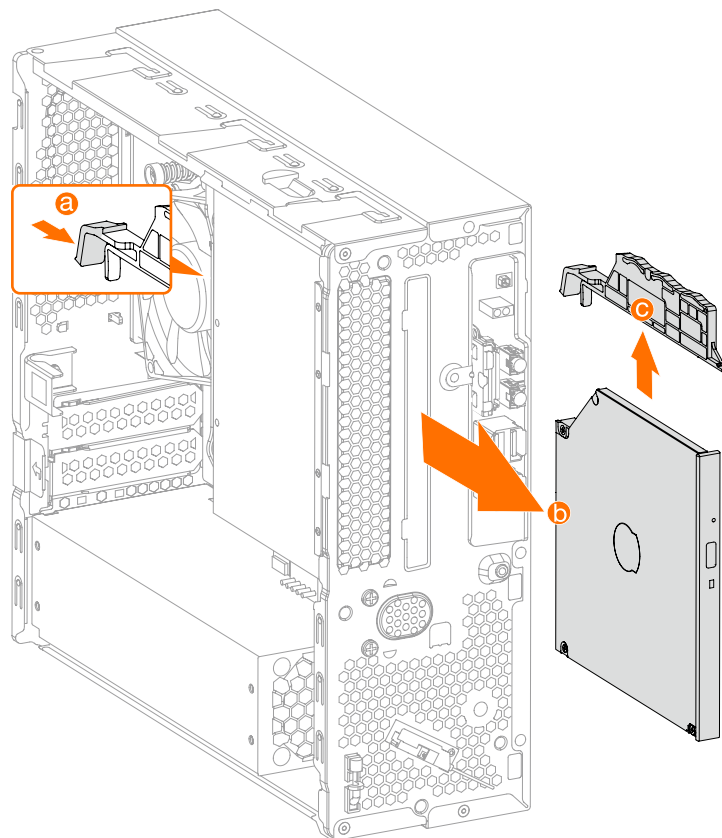
2 Removing the front bezel



③ Replacing the card reader module

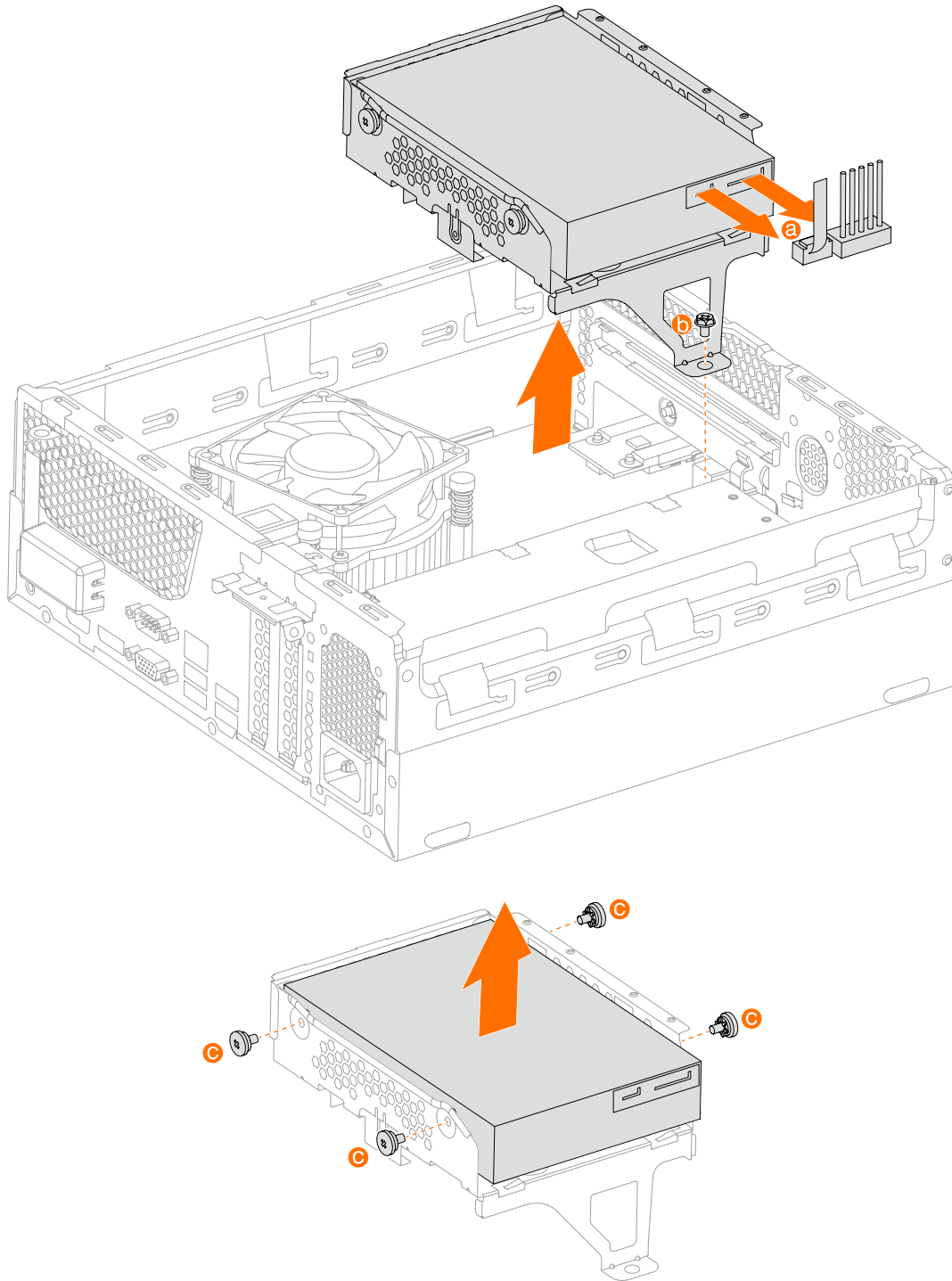


④ Replacing the optical drive

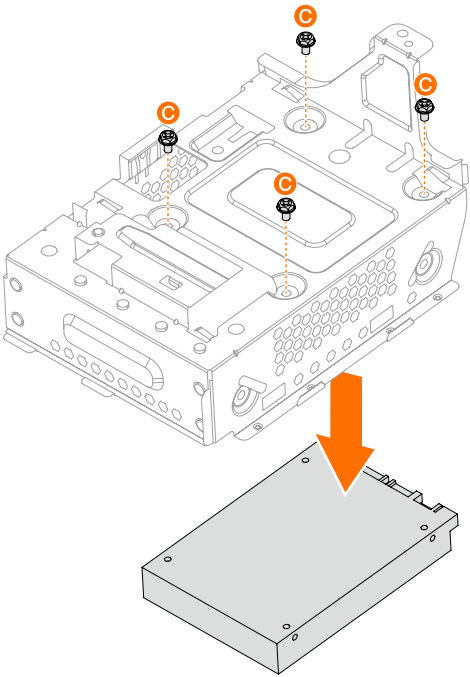
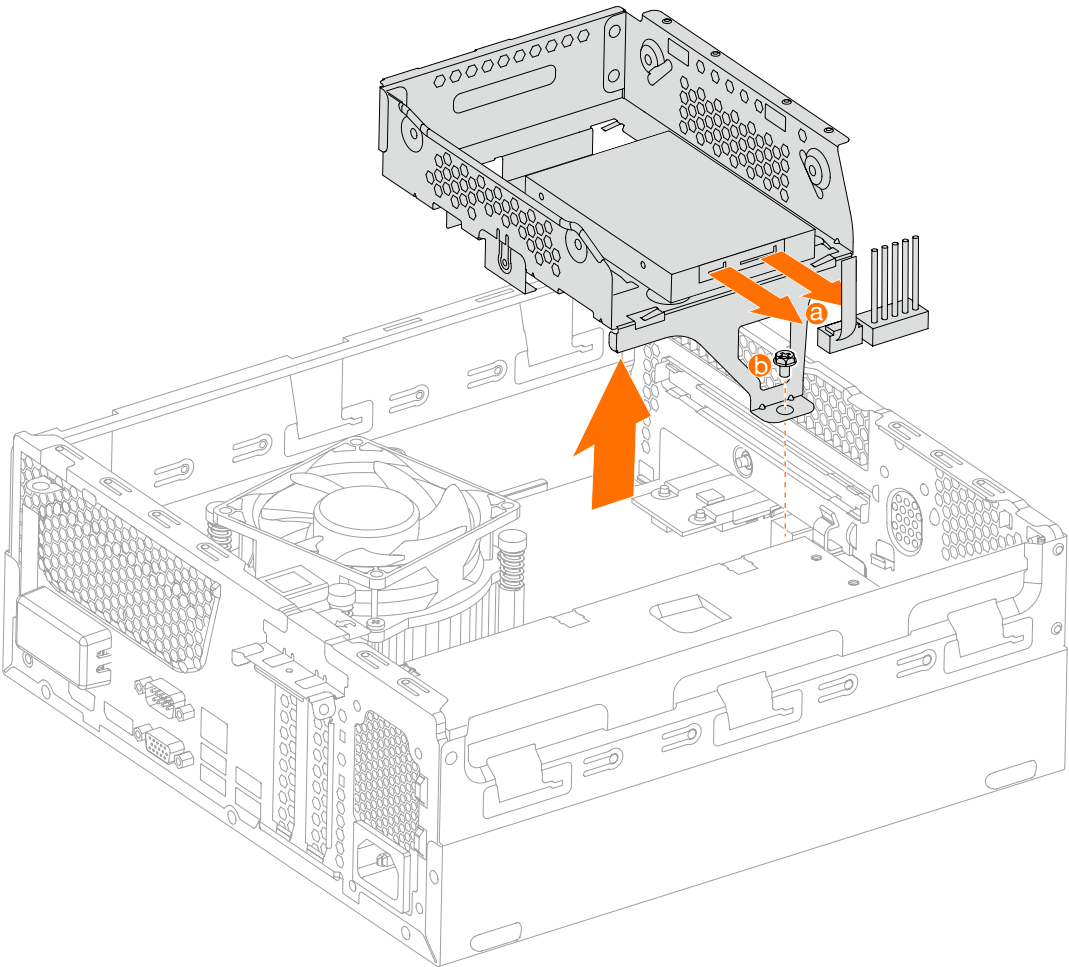


5 Replacing a hard disk drive

HDD: 3.5"

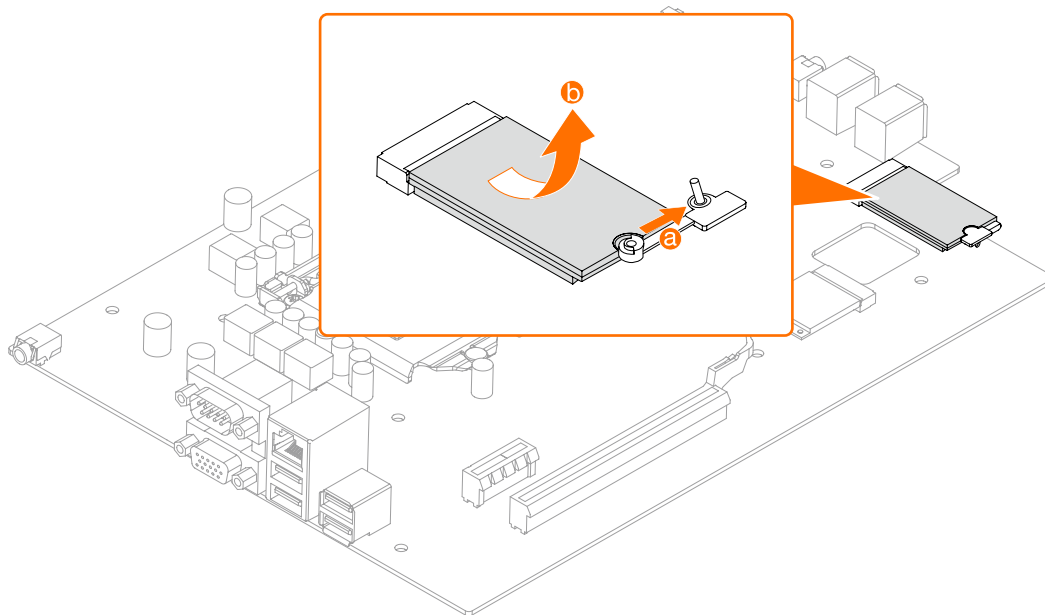


HDD: 2.5"

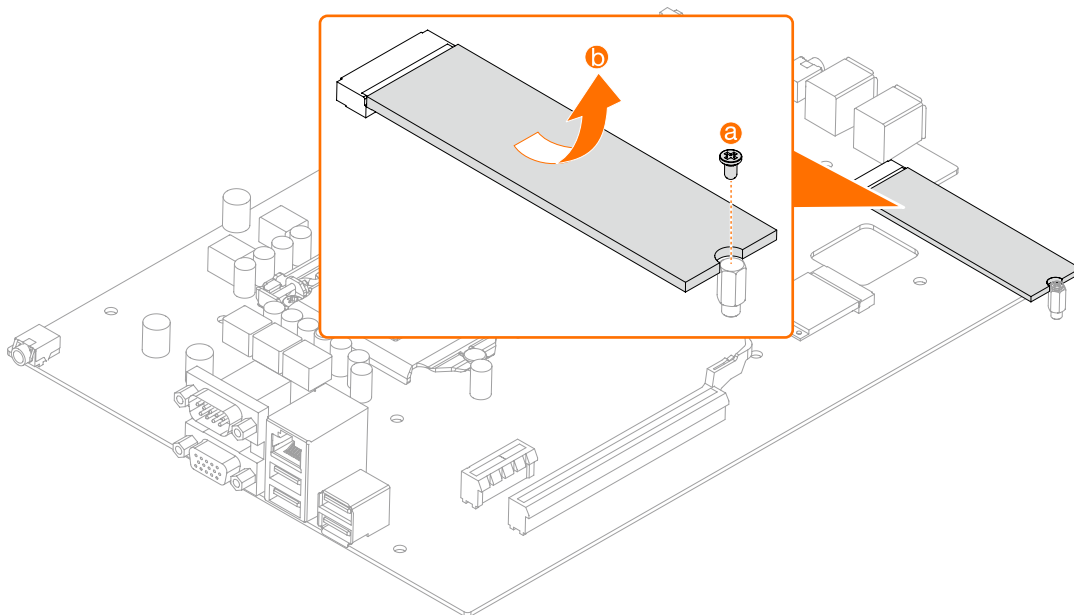


⑥ Replacing a solid state drive

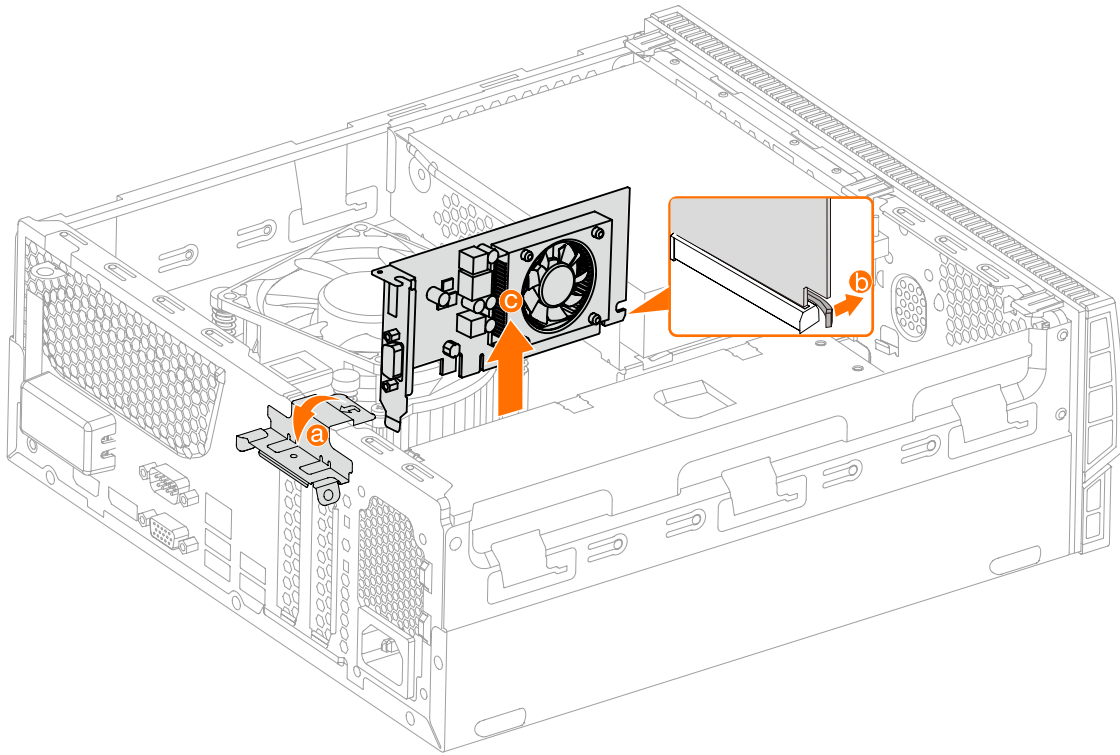
M.2 SSD 2242:



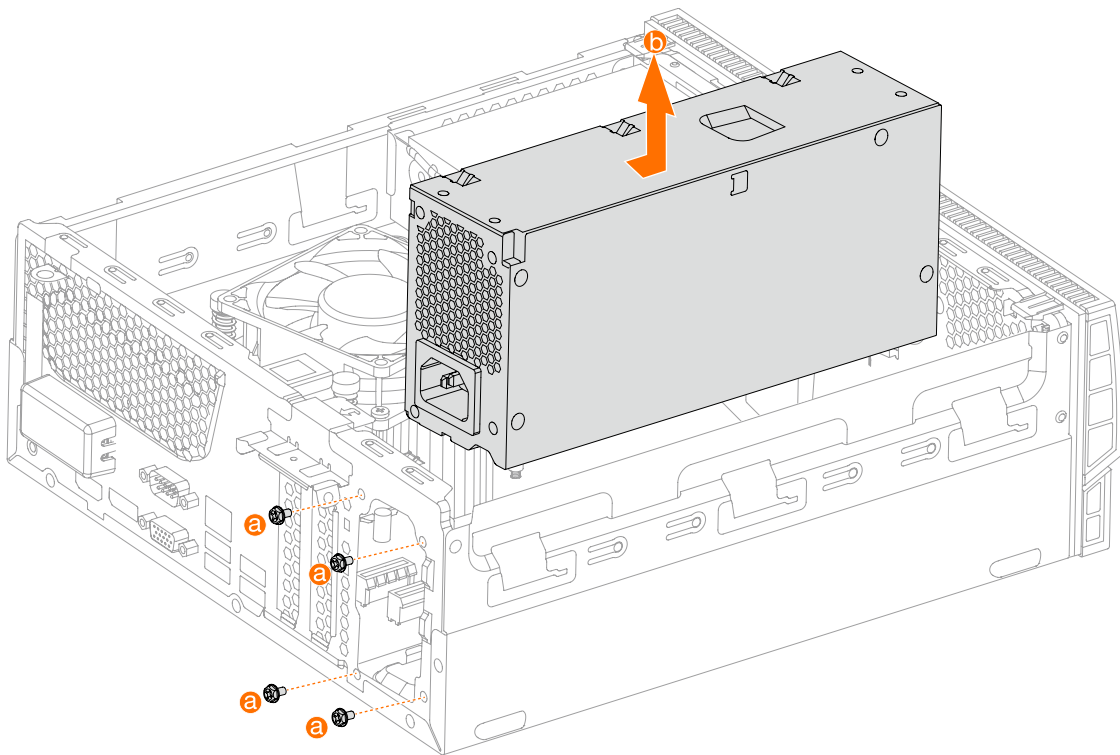
M.2 SSD 2280:



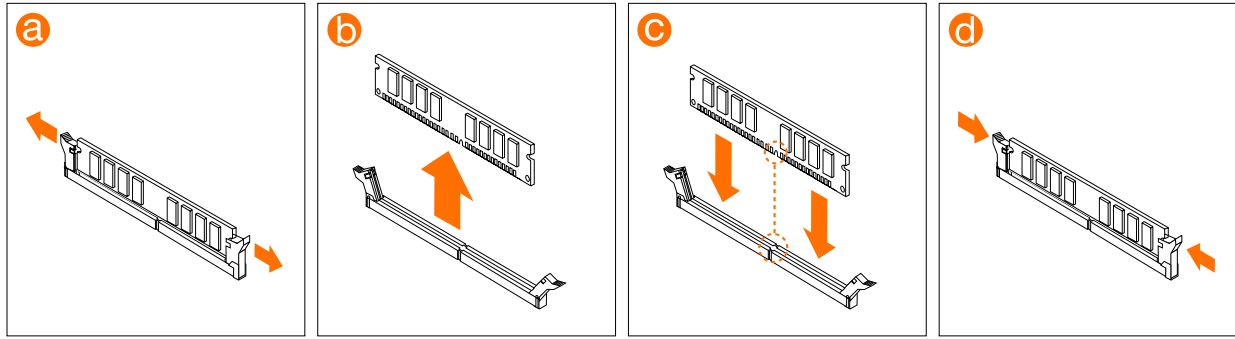
7 Replacing a PCI express adapter



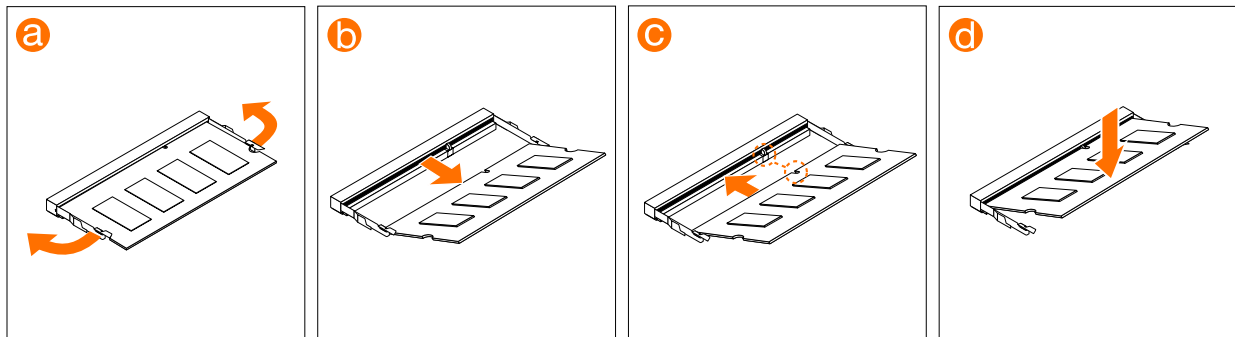
8 Replacing a power supply



9 Replacing a memory module



or



10 Replacing the coin-cell battery

