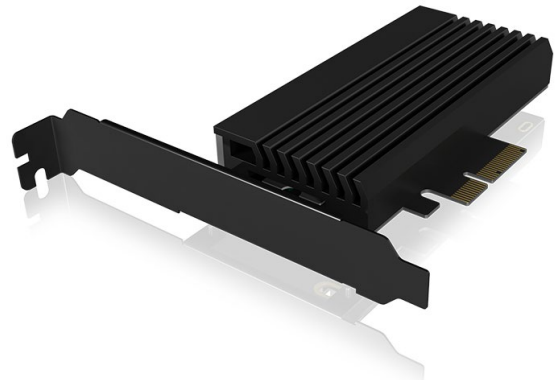


## ICY BOX IB-PCI224M2-ARGB

### ARGB PCIe extension card for M.2 NVMe SSD

#### Key features

- Converts 1x M.2 NVMe SSD to PCIe 4.0 x4
- Large passive heat sink for ideal heat dissipation
- Stylish ARGB LED illumination via 3-pin connector
- Supports M.2 size 22x 30/42/60/80
- Data transfer rate up to 64 Gbit/s (PCIe 4.0 x4)
- Use of double-sided mounted SSDs possible
- Optionally low or high profile slot bracket



#### Packing content

1x IB-PCI224M2-ARGB, 1x Heat sink, 1x High profile bracket, 1x Low profile bracket, 4x Thermal pad (70 mm), 1x 3-pin ARGB cable, 1x Screw set, 1x Manual

## The turbo for every system

With PCIe 4.0 x4 and up to 64 Gbit/s, the IB-PCI224M2-ARGB ignites the turbo for every system. The addressable RGB LED lighting is a stylish attribute for this powerful expansion card. With the IB-PCI224M2-ARGB ICY BOX® once again combines style and power.

#### Technical data

<b>Model</b>	IB-PCI224M2-ARGB
<b>Article no.</b>	60724
<b>EAN code</b>	4250078170587
<b>Brand</b>	ICY BOX
<b>Colour</b>	Black
<b>Material</b>	Metal, plastic
<b>Interface to host computer</b>	PCIe x4
<b>Socket</b>	M-Key
<b>M.2 card size</b>	22x 30/42/60/80
<b>M.2 interface</b>	PCIe x4 (NVMe)
<b>Supported M.2 card keys</b>	M.2 PCIe NVMe

#### SSD capacity

Unlimited

#### Transfer rate

Up to 64 Gbit/s

#### Cooling

Passive

#### ARGB connector

3-pin

#### Power supply

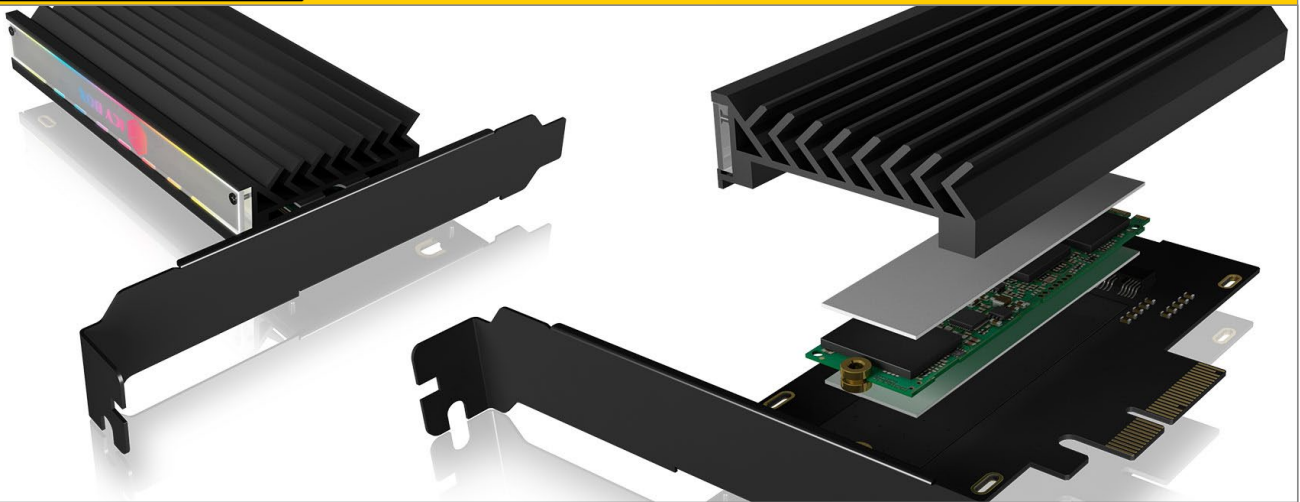
Bus power

#### Operating system

Windows®

#### System requirements

Windows® 10 with NVMe support, one free PCIe 4.0 x4 slot (backward compatible with PCIe 3.0, 2.0), 3-pin ARGB controller or header on motherboard

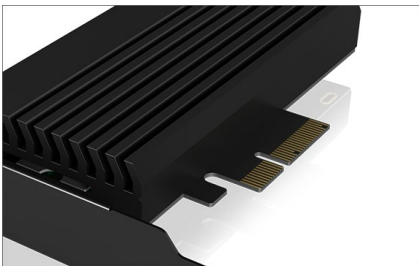


## ICY BOX **IB-PCI224M2-ARGB** ARGB PCIe extension card for M.2 NVMe SSD



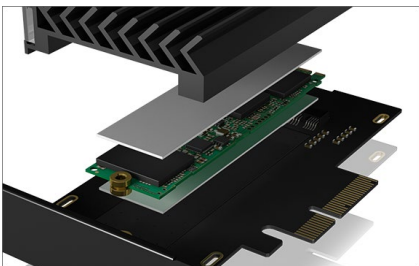
### Light show

The possibilities are many - with the addressable RGB LED lighting you can express your individuality! Simply control the colour or the sequence of the lighting as you like with a 3-pin ARGB controller or via your motherboard.



### Always stays cool

Even with the highest work load, your SSD always stays cool. The large, solid aluminium heat sink in an innovative cooling fin design provides enough heat dissipation to keep your SSD stable and performant in operation.



### Fire up the turbo

New M.2 NVMe SSDs with 4th generation PCIe increase read and write rates even more than previously. The IB-PCI224M2-ARGB offers PCIe 4.0 with transfer rates of up to 64 Gbit/s and is the appropriate support for such SSDs and thus ensures a high performance system!

#### Logistical data

**Packing unit:** 40 pcs./carton  
**Total weight:** 11.08 kg/carton  
**Gross weight (with packing):** 0.277 kg  
**Net weight:** 0.129 kg

**Dimension/carton:** 500x320x310 mm  
**Dimension (with packing):** 200x150x25 mm  
**Dimension of article:** 135x122x22 mm  
**Country of origin:** China