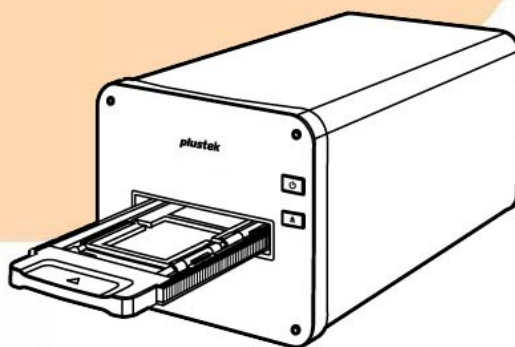


Scanner User's Guide

plustek



OpticFilm 120 Pro

- ✓ **Installation**
- ✓ **Usage & Maintenance**
- ✓ **Troubleshooting**

Trademarks

© 2020 Plustek Inc. All rights are reserved. No portion of this document may be reproduced without permission.

All trademarks and brand names mentioned in this publication are property of their respective owners.

Liability

While all efforts have been made to ensure the accuracy of all contents in this manual, we assume no liability for errors or omissions or by statements of any kind in this manual, whether such errors are omissions or statements resulting from negligence, accidents, or any other cause. The contents of this manual are subject to change without notice. We will not shoulder any legal liability, if users failed to follow the operation instructions in this manual.

Copyright

The scanning of certain documents, for example checks, bank notes, I.D. cards, government bonds, or public documents, may be prohibited by law and/or subject to criminal prosecution. We recommend you to be responsible and respectful of the copyrights laws when you are scanning books, magazines, journals and other materials.

Environmental Information

Recycle or disposal at end-of-life information, please ask local distributors or suppliers for recycle and disposal information. The product is designed and produced to achieve sustainable environmental improvement. We strive to produce products in compliance with global environmental standards. Please consult your local authorities for proper disposal.

The product packaging is recyclable.

Attention for recycling (For EU country only)

Protect your environment! This product should not be thrown into the household waste container. Please give it to the free collecting center in your community.

Screen Examples in This Manual

The screen shots in this guide were made with Windows 10. If you are using Windows 8 / 7, your screen will look somewhat different but functions the same.

Table of Contents

INTRODUCTION	1
A NOTE ABOUT ICONS	1
SAFETY PRECAUTIONS	2
MAINTENANCE.....	3
PRODUCT OVERVIEW	4
BOX CONTENTS	4
SCANNER OVERVIEW	5
BEFORE INSTALLING THE SCANNER	6
CONNECTING THE SCANNER TO YOUR COMPUTER	6
INSTALLING THE SCANNER	7
INSTALLING SCANNER DRIVER (WINDOWS).....	7
INSTALLING SILVERFAST SOFTWARE.....	8
POWER ON THE SCANNER	11
REQUEST FOR SILVERFAST SERIAL NUMBER	12
SILVERFAST SOFTWARE SERIALIZATION	13
SCAN WITH THE SILVERFAST APPLICATION	15
FILM HOLDERS	16
USING MOUNTED SLIDE HOLDER.....	16
USING 35MM FILMSTRIP HOLDER.....	16
USING 120/220 FILMSTRIP HOLDER	17
INSERT THE FILM HOLDER.....	18
LENS CALIBRATION TOOL	19
APPENDIX A: TROUBLESHOOTING	24
SCANNER CONNECTION.....	24
SCANNING PROBLEMS	25
APPENDIX B: SPECIFICATIONS	27
APPENDIX C: CUSTOMER SERVICE AND WARRANTY	28
SERVICE & SUPPORT INFORMATION (FOR EU COUNTRY ONLY).....	28
STATEMENT OF LIMITED WARRANTY	29
FCC RADIO FREQUENCY STATEMENT	30

Introduction




Welcome to the world of Plustek scanners – the ultimate in computer imaging. Your new scanner will improve the professionalism of your day-to-day computing tasks by allowing you to input images into your computer system.

Like all of our products, your new scanner is thoroughly tested and backed by our reputation for unsurpassed dependability and customer satisfaction.

Thank you for choosing us as your scanner supplier. We hope you will continue to turn to us for additional quality products as your computing needs and interests grow.

A Note about Icons

This guide uses the following icons to point out information that deserves special attention.

 Danger	Danger: A procedure that must be followed carefully to prevent injury, or accidents.
 Caution	Caution: Information that, if not followed, may result in data loss or damage to the product.
 Attention	Pay Special Attention: Instructions that are important to remember and may prevent mistakes.

Safety Precautions

Before using this device, please read the following important information to eliminate or reduce any possibility of causing damage and personal injury.

1. Usage, the product is for indoor use in dry locations. Moisture condensation may occur inside this device and cause malfunction at these conditions:
 - when this device is moved directly from a cold to a warm location;
 - after a cold room is heated;
 - when this device is placed in a damp room.

To avoid the moisture condensation, you are recommended to follow the procedure:

- i. Seal this device in a plastic bag for it to adapt to room conditions.
 - ii. Wait for 1-2 hours before removing this device from the bag.
2. Do use the power adapter and USB cable provided with the scanner. Use of other power adapter and cables may lead to malfunction.
3. Keep the space around the AC adapter clear in case you need to quickly unplug the AC adapter during emergencies.
4. Damaged wire could cause fire or electrical shock. Keep the power cord straight and without being twisted, bended, or scraped.
5. Unplug this device if you don't need to use for a certain period of time, such as, during night or long weekend, to avoid any risks of causing fire.
6. Do not attempt to disassemble the scanner. There is danger of an electrical shock and opening your scanner will void your warranty.
7. Be sure not to bump or knock the scanner as it is fragile and could break.
8. Before installing the device drivers, please disconnect all other imaging devices (other scanners, printers, digital cameras, web cameras) from the PC.
9. Save the Setup/Application USB stick. You may need to reinstall the driver and software in the future.
10. Please make sure your hands are clean before handling slides and negatives. If there is dust on your film material, please clean it by blowing it off or wiping with non-abrasive cloth.
11. Please keep your slides and negatives in a cool, dry place out of direct sunlight. Handle with care as improper storage and handling can lead to deterioration and ultimately affect your scan results.

Maintenance



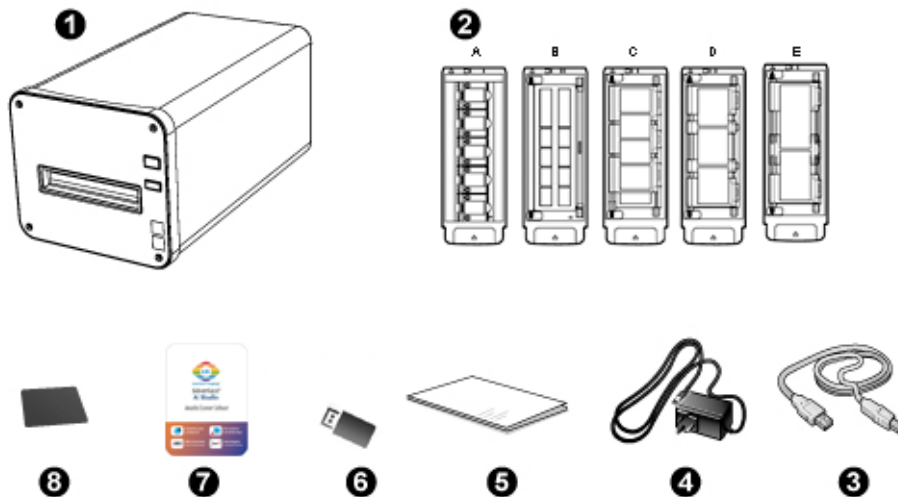
Caution

To keep your scanner working smoothly, take a moment to review the following maintenance tips.



- ⚠️ Avoid using the scanner in a dusty environment. When it is not in use, keep the scanner covered. Dust particles and other foreign objects may damage the unit.
- ⚠️ Do not attempt to disassemble the scanner. There is danger of an electrical shock and opening your scanner will void your warranty.
- ⚠️ Do not subject the scanner to excessive vibration. It may damage the internal components.
- ⚠️ Your scanner operates best in temperatures between 10° C to 40° C (50° F to 104° F).

Product Overview

Box Contents¹

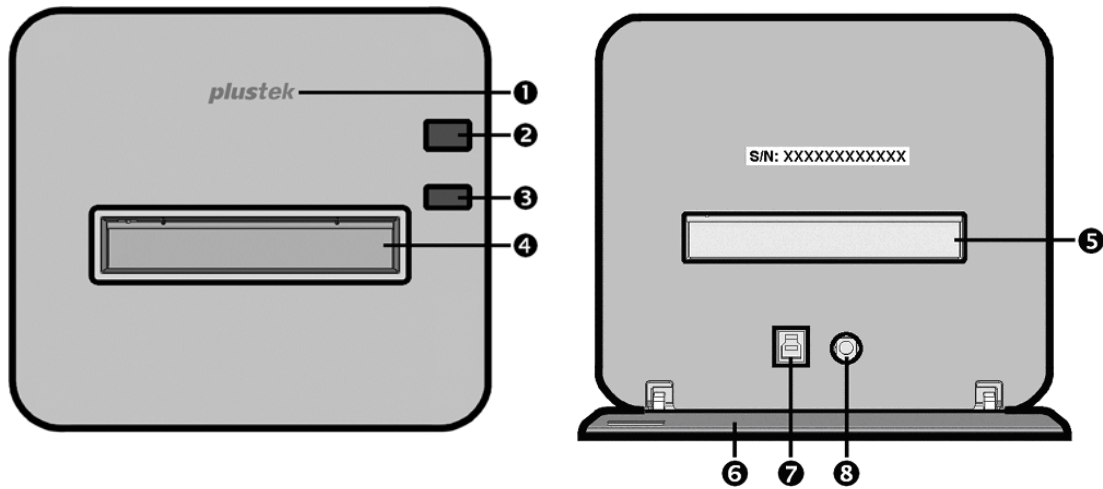


- ❶ Scanner
- ❷ Mounted Slide Holder and Filmstrip Holder
 - A. For scanning 35mm mounted slides (max. 5 slides)
 - B. For scanning 35mm filmstrips (max. 12 frames)
 - C. For scanning 120/220 filmstrips (For 6 x 4.5)
 - D. For scanning 120/220 filmstrips (For 6 x 6 & 6 x 7)
 - E. For scanning 120/220 filmstrips (For 6 x 8/6 x 9 & 6 x 12)
- ❸ USB 3.0 Cable
- ❹ Power Adapter
- ❺ Quick Guide
- ❻ Setup / Application USB stick
- ❼ Activation card
- ❽ 6x7 IT-8 Target

 Attention	You may find the scanner hardware serial number on the activation card, please keep the card in a safe place.	
---	---	---

¹ Save the box and packing materials in case you need to transport this scanner in the future.
Box contents may change at any time without prior notice.


Scanner Overview



- ❶ **Logo LED:** It indicates the scanner status.
- ❷ **Power Button:** Press and hold the button for **2 seconds** then release the button to turn the scanner ON. Press and hold the button for **2 seconds** then release the button to turn the scanner OFF.

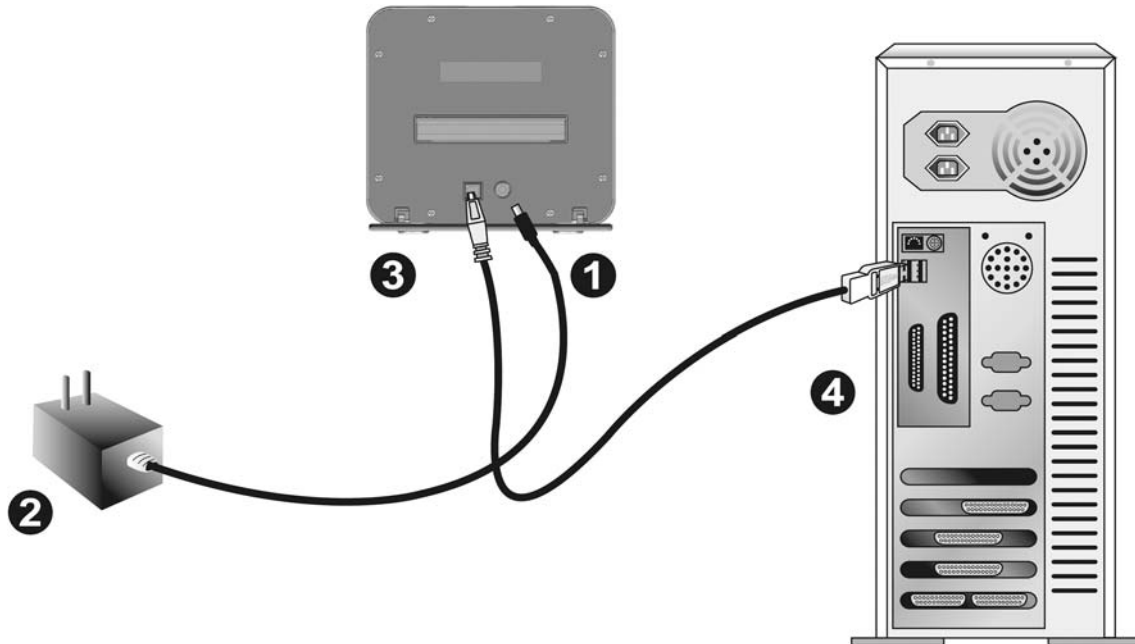
Logo LED (blue)	Power button LED (orange)	Status
On	Off	The scanner is turned on and operating normally.
On	Blinking	The film holder has been ejected and can be removed.
Off	Off	The scanner is off, either because the power is not turned on, or because the AC adapter is not properly plugged into an AC power outlet.

- ❸ **Eject Button:** Use this to eject the currently inserted film holder.
- ❹ **Front Film Holder Slot:** Insert the film holder into the scanner through dust cover.
- ❺ **Rear Film Holder Slot:** Manually remove the Film Holder through the Rear Film Holder Slot if it does not eject through the front automatically.
- ❻ **Protection Cover:** Protects the Rear Film Holder Slot, the Power Receptor and USB Port. Open the Protection Cover to use the scanner.
- ❼ **USB Port**
- ❽ **Power Receptor**

 Attention	<p>You will need the 12 digits Serial Number for SilverFast software activation. You will also need it when you contact your dealer or our service center in the future.</p>
---	---

Before Installing the Scanner

Connecting the Scanner to Your Computer



Attention

Please allow about 12cm of space behind the scanner to open the Protection Cover.

- 1 Plug the power adapter into the scanner's power receptor.
- 2 Plug the other end of the power adapter into a standard AC power outlet.
- 3 Plug the square end of the included USB cable to the USB port at the rear of the scanner.
- 4 Plug the rectangular end of the USB cable to the USB port on the back of your computer.

Note: If there is another USB device connected to the computer, connect the scanner to an available USB port.



Attention

Please **DO NOT** power on the scanner now.

Installing the Scanner

Please follow the step-by-step procedures described below to install the USB scanner.

*You may find the latest driver on our official website www.plustek.com -> Support & Download -> Drivers and Downloads

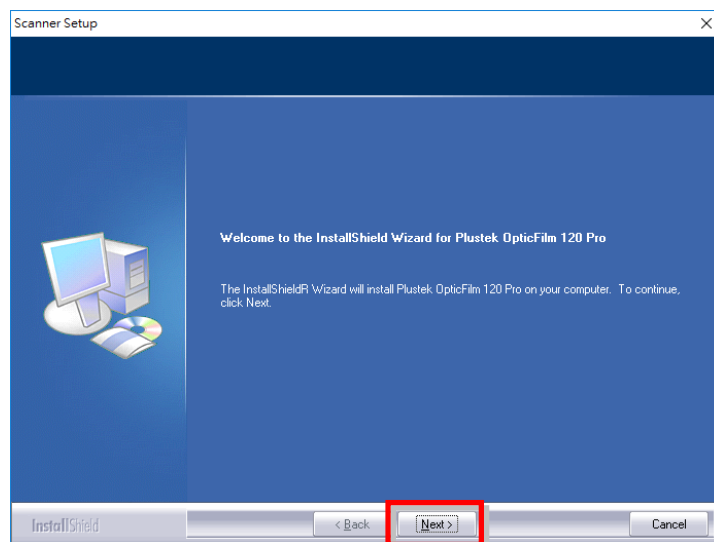
Installing Scanner Driver (Windows)



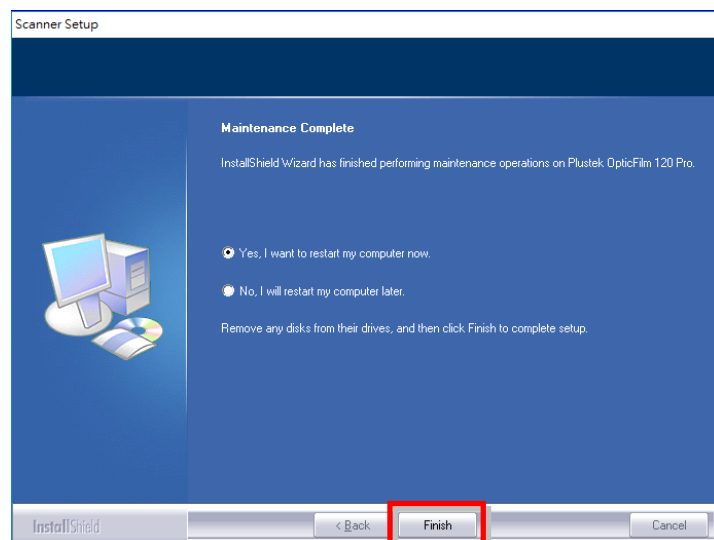
Attention

For Mac OS X user, it's not necessary to install the driver, you just need to install the SilverFast software.

1. Insert the Setup / Application USB stick into your computer.
2. Click **Setup.exe** under **OPTICFILM > Windows > Plustek OpticFilm 120 Pro** to install the scanner driver.



3. After the software is installed, close all open applications and click on the [Finish] button to restart your computer.

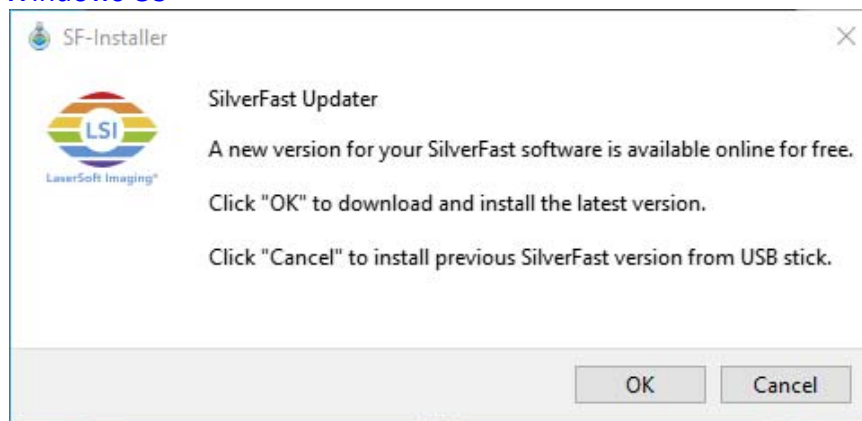


Installing SilverFast Software

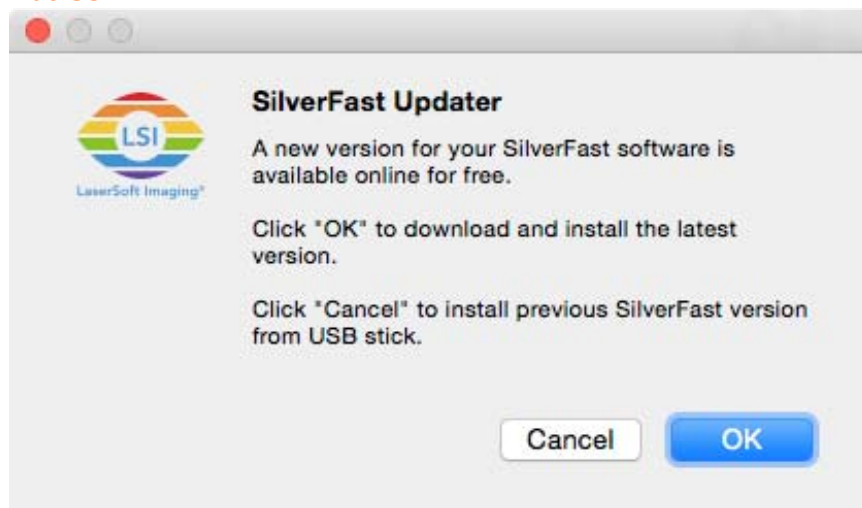
1. Insert the Setup / Application USB stick into your computer.
2. Install the **SilverFast** software by the following path:
Windows OS: **OPTICFILM > Windows > SilverFast > SF-Installer.exe**
Mac OS X: **OPTICFILM > Mac > SilverFast > SF-Installer.dmg**

If a more recent SilverFast version is available online, the following dialog will be displayed.

Windows OS



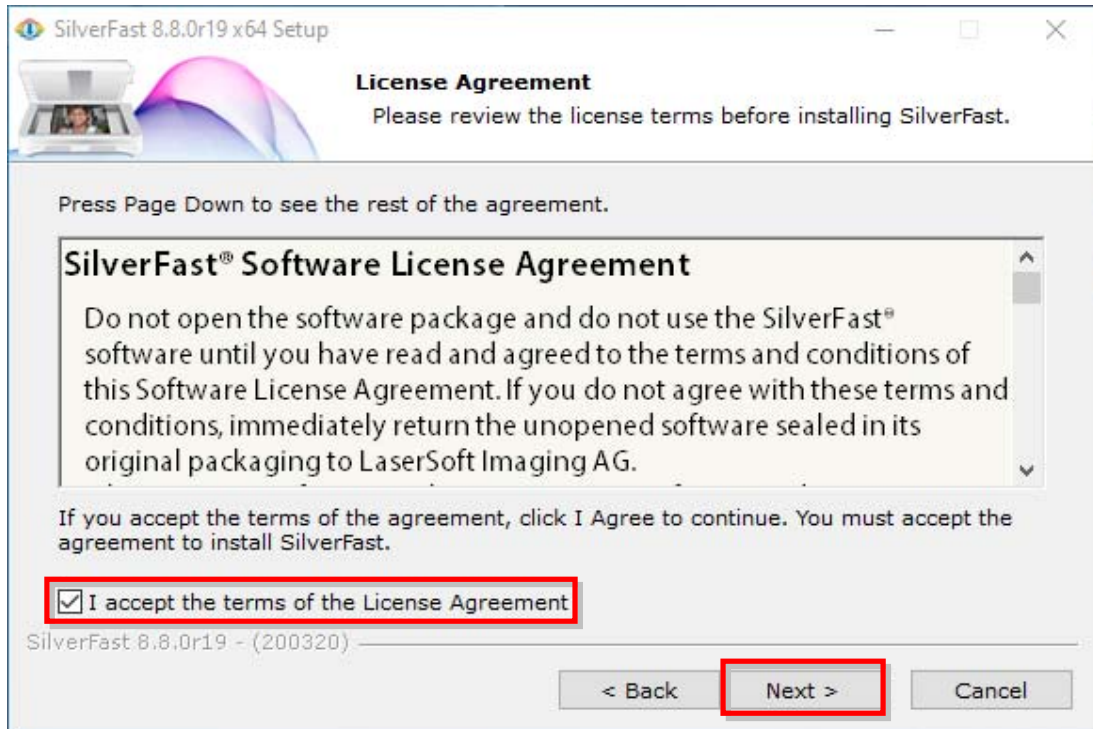
Mac OS X



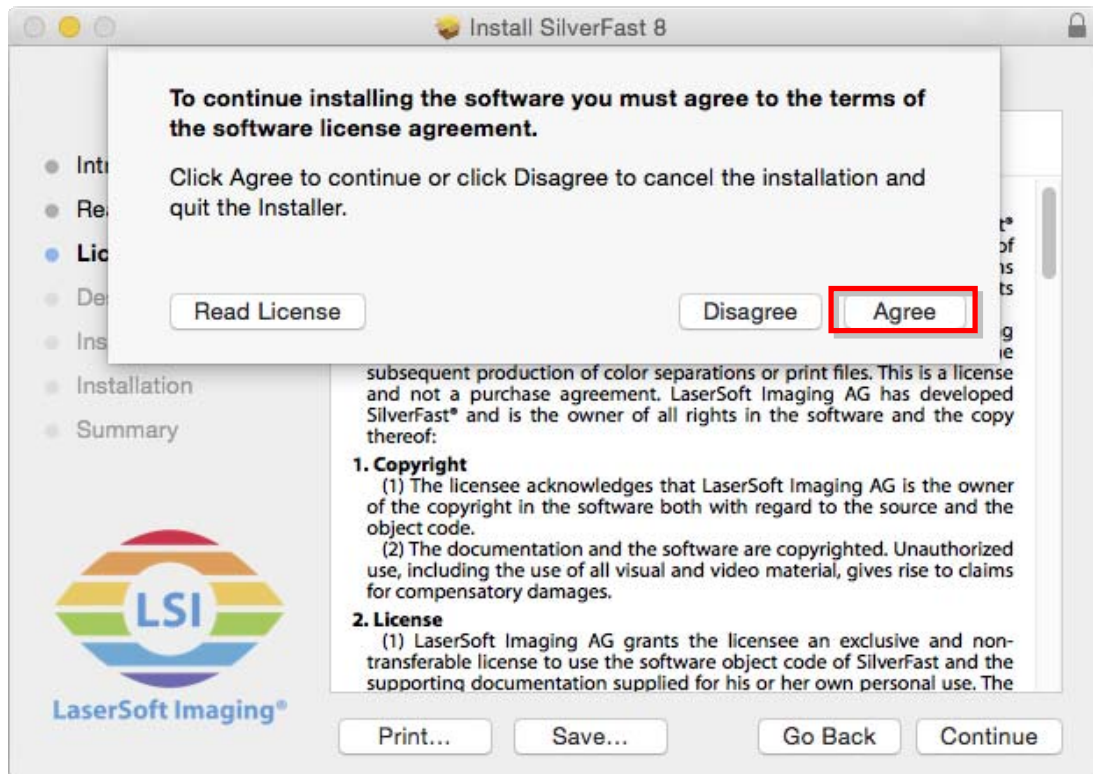
Click [OK] to download and install the latest SilverFast version from the internet or click [Cancel] to install the out-of-date version from the USB stick.

3. Follow the on-screen instructions.

Windows OS

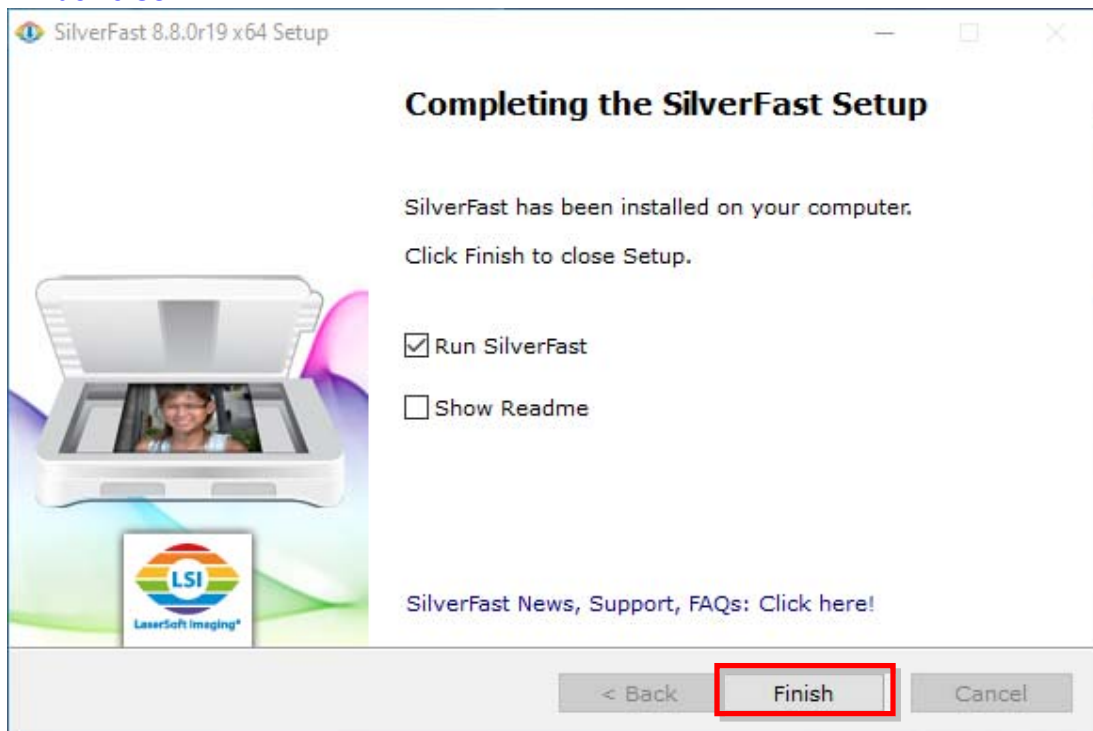


Mac OS X

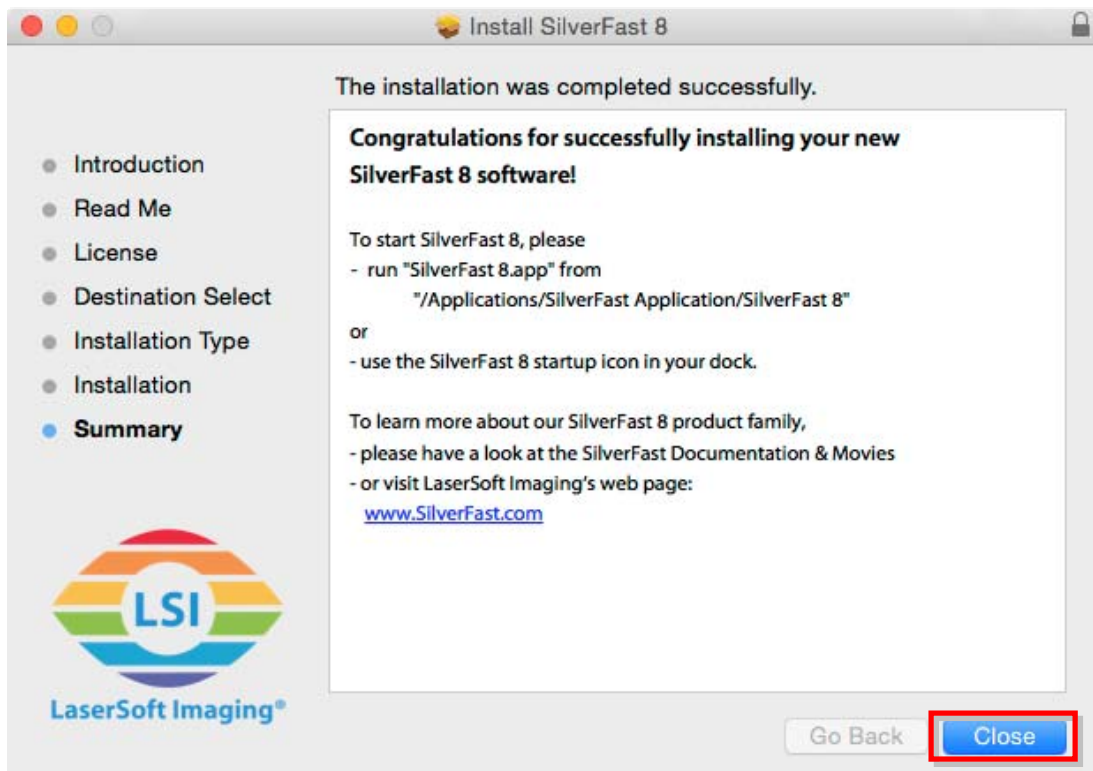


4. After the installation finishes, click on [Finish] / [Close] to exit the installer.

Windows OS

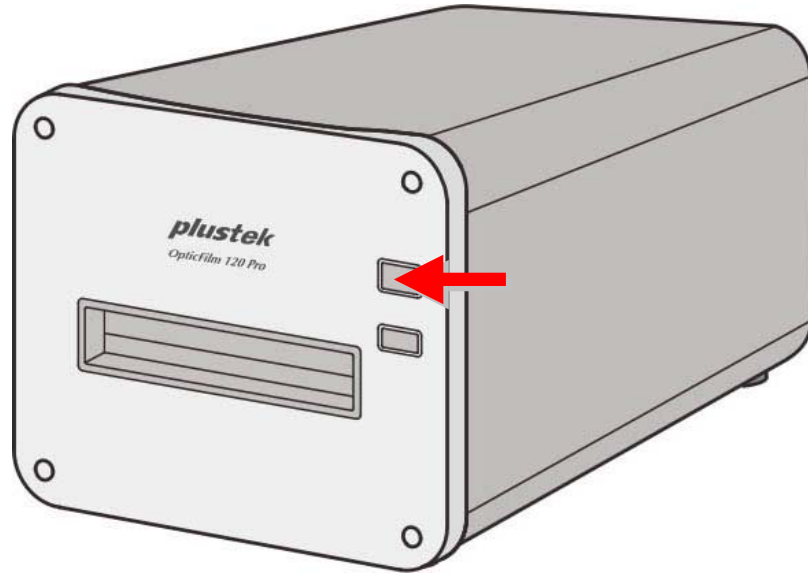


Mac OS X



Power on the Scanner

Press and hold the button for **2 seconds** then release the button to turn the scanner ON.



Attention

Press and hold the button for **2 seconds** then release the button to turn the scanner OFF.

Request for SilverFast Serial Number

1. Visit the website www.silverfast.com/activation-plustek and follow the instructions. You will need your scanner hardware serial number.

The screenshot shows the top navigation bar with the LaserSoft Imaging logo and links for PRODUCTS, STORE, SOLUTIONS, DOWNLOADS, SUPPORT, and CONTACT. A search bar is in the top right. The main heading reads "Request a free SilverFast Ai Studio 8 serial number for your **plustek** scanner." Below this is a product image of the "OpticFilm 120 Pro" scanner. The central form is titled "Enter Plustek Hardware Serial Number" and contains a text input field for the serial number, a note about where to find it, and a "Check" button. An image of the scanner's back panel with a magnifying glass over the serial number label is also shown.

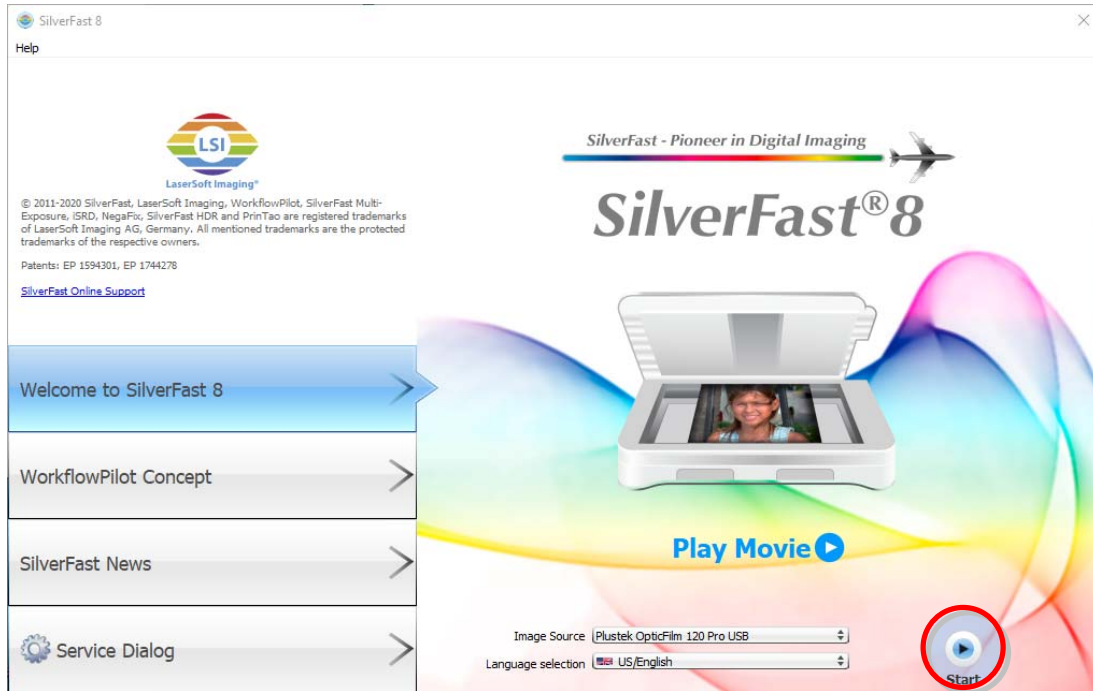
2. Enter your **scanner hardware serial number**, your name, and your email address. The SilverFast serial number will be sent to your registered email address.

The registration form is titled "Free SilverFast Ai Studio Serial Number". It contains a paragraph of instructions, followed by input fields for "Hardware Serial Number" (with a value of "1A32" and an "Edit Hardware Serial Number" link), "First Name, Last Name", and "Country" (set to "Taiwan"). Below these are fields for "Email address" and "Email (re-enter)". A section for newsletter subscription includes a checked radio button for "Yes, please. I'd like to receive the SilverFast newsletter (approximately 6 times a year)." and an unchecked one for "No, thanks. I don't want to receive your newsletter." A "Register" button is at the bottom.

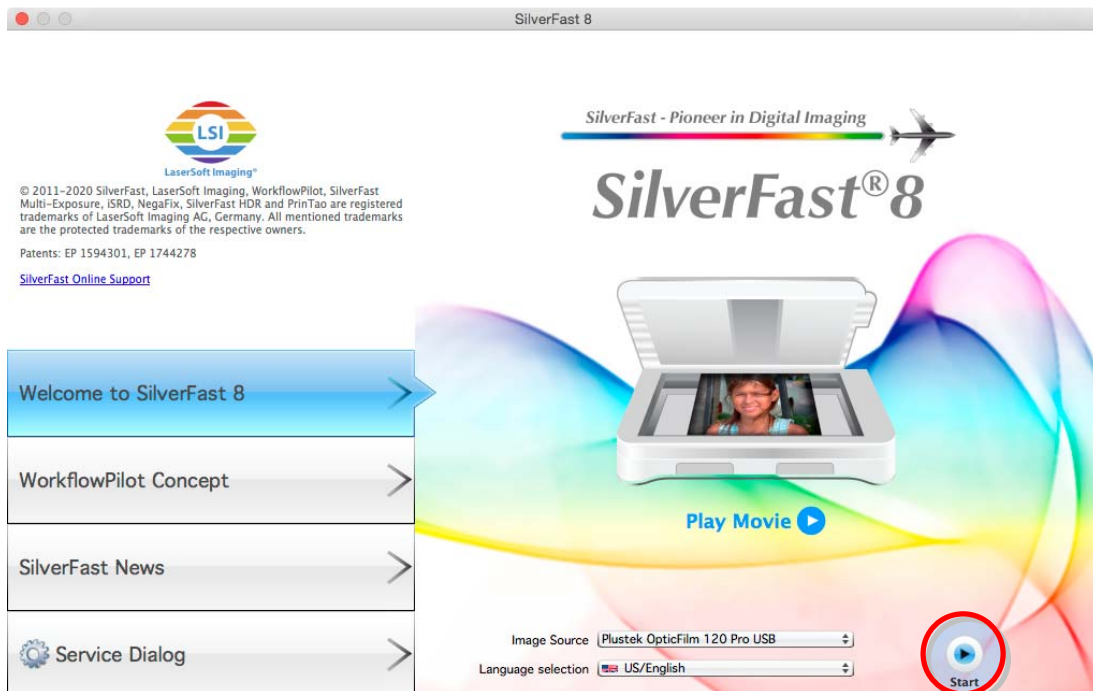
SilverFast Software Serialization

1. Launch the SilverFast program using the SilverFast shortcut on your Desktop. Verify your [Image Source] and [Language selection], then click on [Start] to launch the program.

Windows OS



Mac OS X



2. Once the program has been launched, enter your [First name], [Last name] and [Serial number], then click on [Unlock] to unlock SilverFast.

Windows OS

Please enter your SilverFast serial number:

First name

Last name

Company

Serial number - - - - -

In accordance with the Software License Agreement, the software will automatically activate over the Internet. This is done by the encrypted transmission of last name, first name and serial number.

For more information about the data we collect and how our software uses this data, please see our Privacy Police.

Mac OS X

Please enter your SilverFast serial number:

First name

Last name

Company

Serial number - - - - -

In accordance with the Software License Agreement, the software will automatically activate over the Internet. This is done by the encrypted transmission of last name, first name and serial number.

For more information about the data we collect and how our software uses this data, please see our Privacy Police.

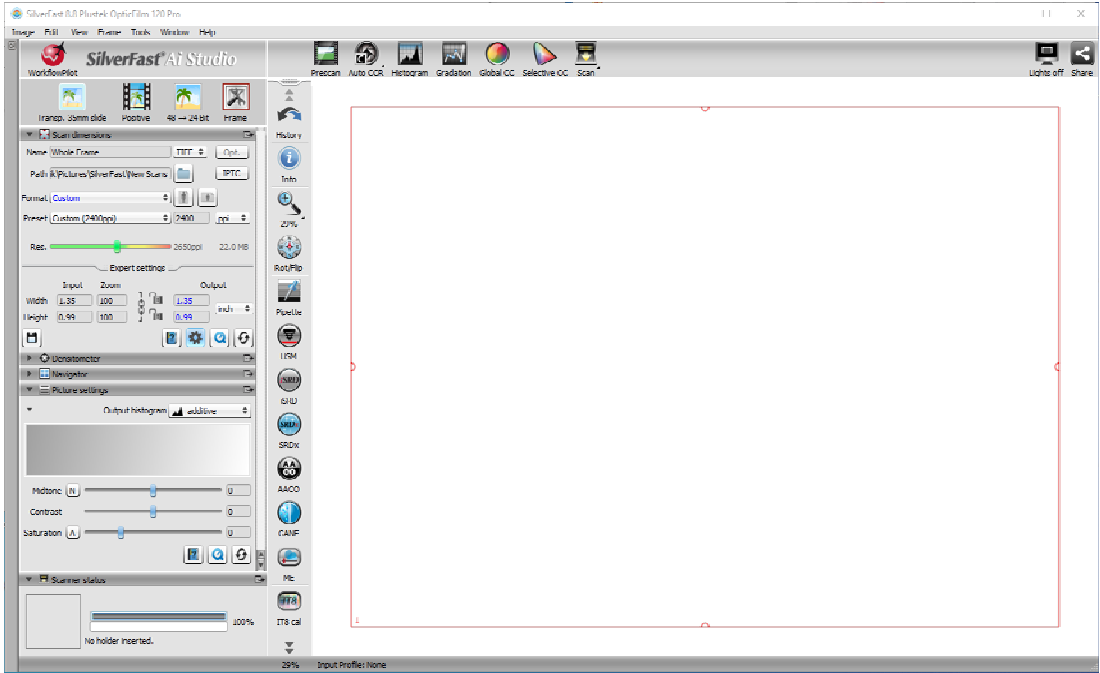


Visit the website www.silverfast.com/activation-plustek to request SilverFast serial number. You will need your scanner hardware serial number.

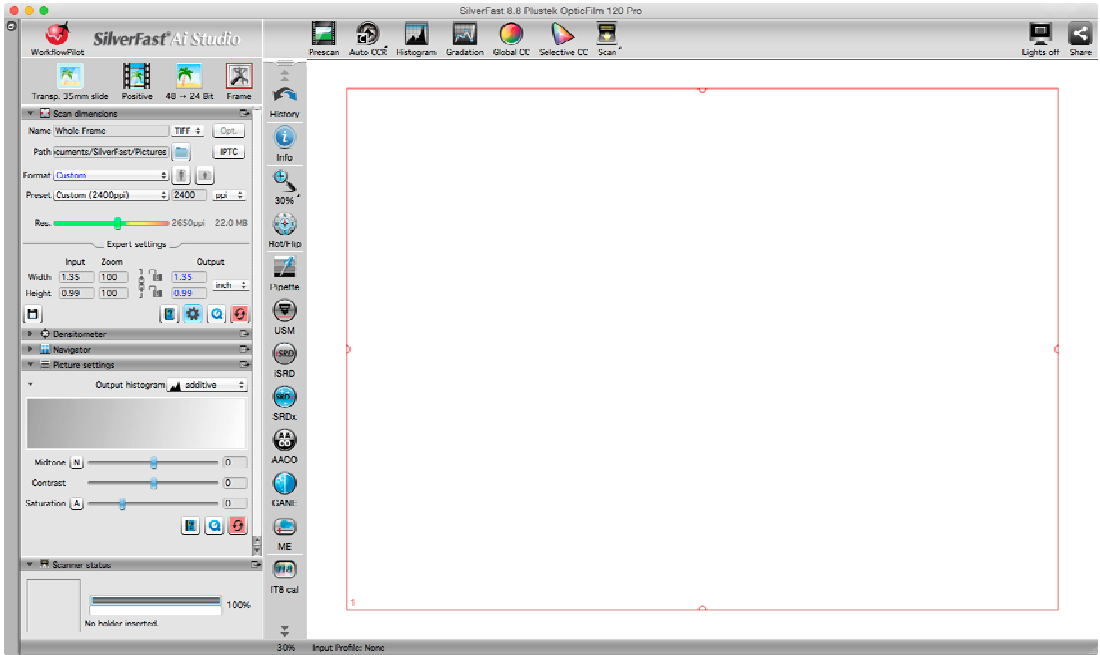
Scan with the SilverFast application

Launch the SilverFast launcher using the SilverFast shortcut on your Desktop. Adjust the scan settings. Please refer to the SilverFast manual for more information about available scan settings.

Windows OS



Mac OS X



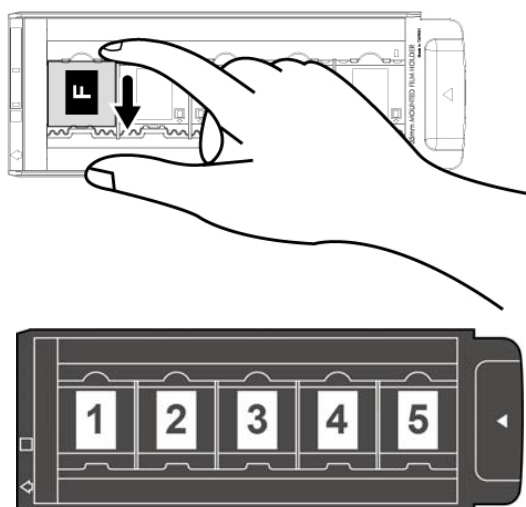
Film Holders

Several film holders are included in the package. They guarantee correct scanning results.

Using Mounted Slide Holder

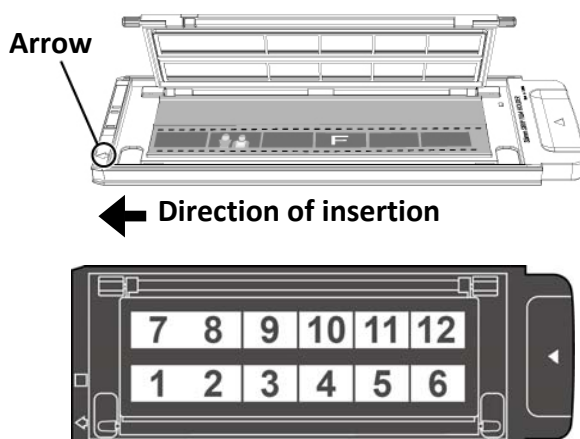
Insert mounted slides into slots with emulsion (non-glossy) side down.

There are arrows and illustrations on the frame of each slot. Please follow the illustrations to insert the mounted slides.



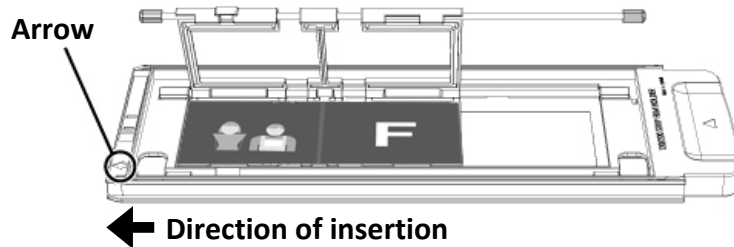
Using 35mm Filmstrip Holder


Open the film holder and place the filmstrip in the film holder with the emulsion (non-glossy) side down. Always align the film towards the direction of insertion. The direction of insertion is indicated by a white square and an arrow. When scanning a single filmstrip or filmstrips of different lengths, please use the included masking sheets to cover any open frames, then close the film holder cover.

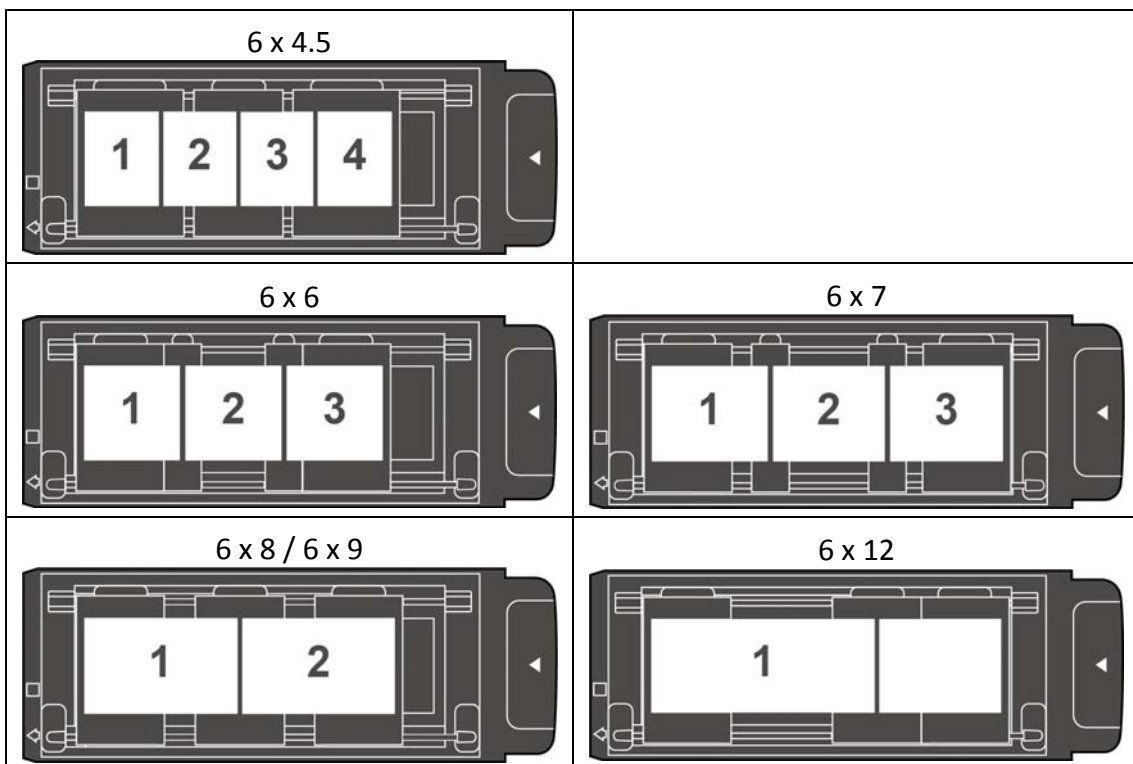


Using 120/220 Filmstrip Holder

Open the film holder and place the filmstrip in the film holder with emulsion (non-glossy) side down. Always align the film towards the direction of insertion. The direction of insertion is indicated by a white square and an arrow.



 Attention	Adjust the individual frames to fit the size of the images on your film, then close the film holder cover.
---	--



Insert the Film Holder

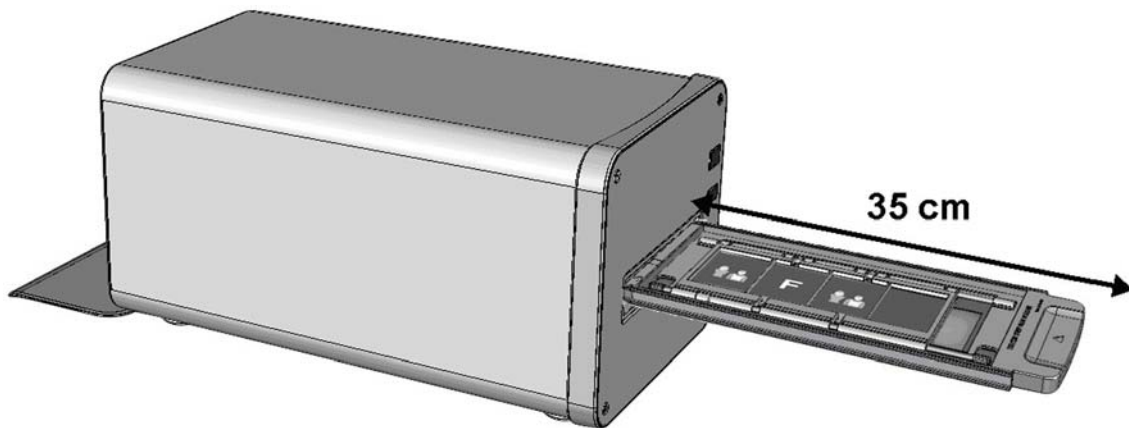
Insert the film holder into the scanner through the Front Film Holder Slot until it is automatically pulled in by the scanner. The scanner will not pull in the film holder if the USB cable is disconnected.

Please allow about 35 cm in front of the scanner to insert and remove the film holder.



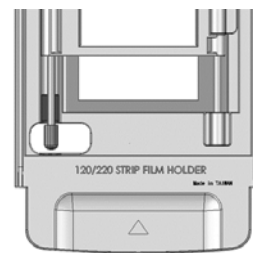
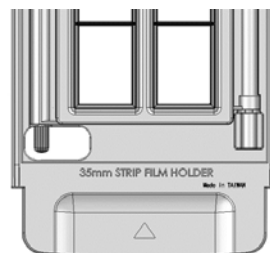
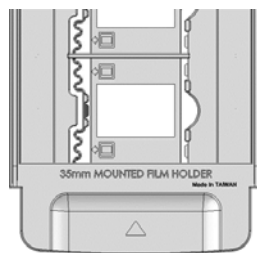
Attention

Please DO NOT press any scan buttons until the film holder is completely inserted. It takes about **30 seconds** to locate the film position and detect the film type.



Attention

- ⚠ The film holder should be able to be inserted into the scanner smoothly. Do not push the film holder hard.
- ⚠ On the top side of the film holder you can see '35 mm Mounted Film Holder' or '35 mm Strip Film Holder' or '120/220 Strip Film Holder'. Always keep this side up for correct scan results.



Lens Calibration Tool



Attention

For Mac OS X user, please install **Lens Calibration Tool** by the following path in the USB stick:

OPTICFILM > Mac > Plustek OpticFilm 120 Pro

The focus point of the scanner can be shifted by this **Lens Calibration Tool**.



Attention

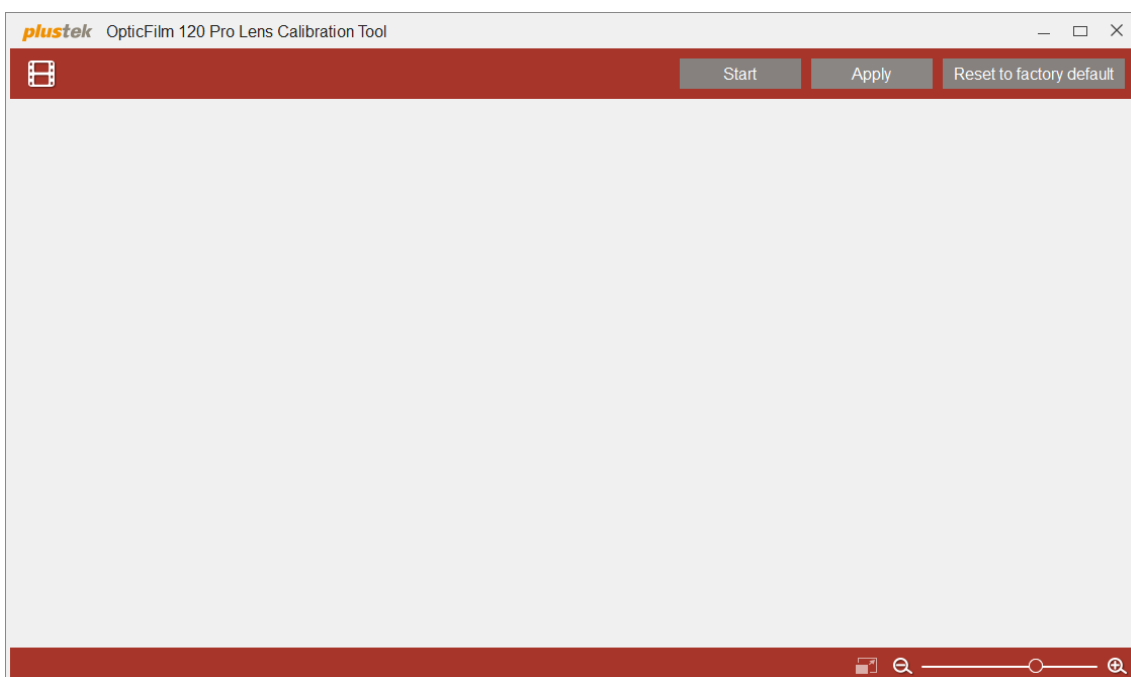
- Before you launch this **Lens Calibration Tool**, please make sure you've **exit the SiverFast program**.
- This process takes about **20 minutes** for 35mm film, exact complete time varies depending on the resolution and the film size you've selected.

For Windows user:

Click **Start > All Programs > Your scanner model name > Lens Calibration Tool**. (For Windows 8.1 users: Point your mouse cursor to the upper or lower right corner of your screen to open the **Charm** bar. Click on the **Start** charm, then click on the downwards arrow button in the lower left corner of the screen. The **Apps** screen will be shown. Move your cursor to the right edge of the screen to scroll right until you find **Your scanner model name**, and then click on **Lens Calibration Tool**.)

For Mac OS X user:

Double-click on **Lens Calibration Tool** in **Finder > Applications > Plustek > Your scanner model name**.




You will be prompted to insert the film holder.

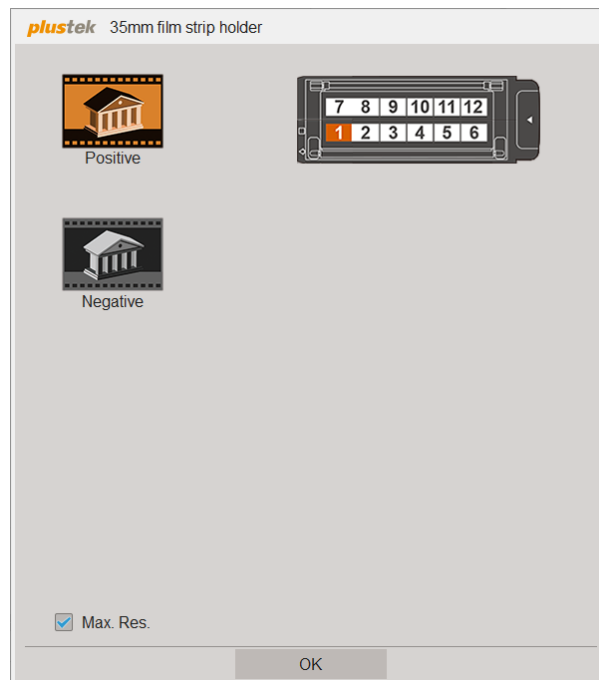


If you insert the 35mm film slide holder, the following dialog pops up. Select the film type and desired frame that you want to take as the standard, then click **OK** button. You may tick the checkbox of **Max. Res.** to scan image with the maximum resolution.

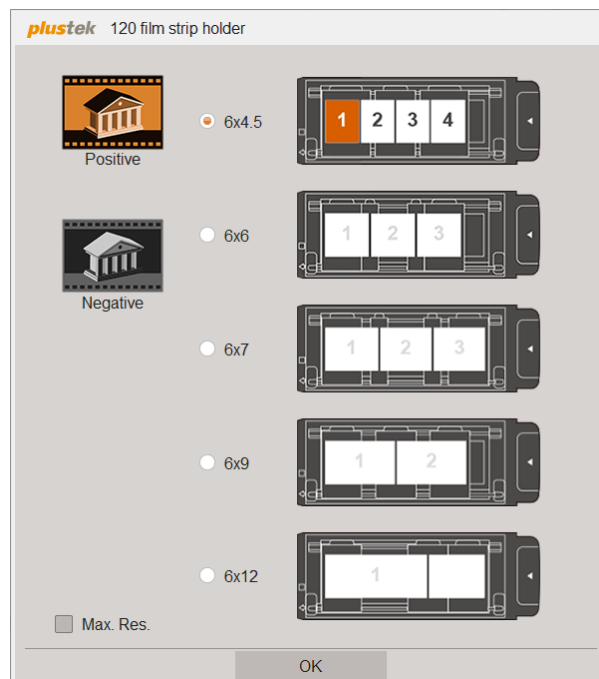


 Attention	The Max. Res. is 5300 dpi, while the default resolution setting is 2650 dpi.
---	---

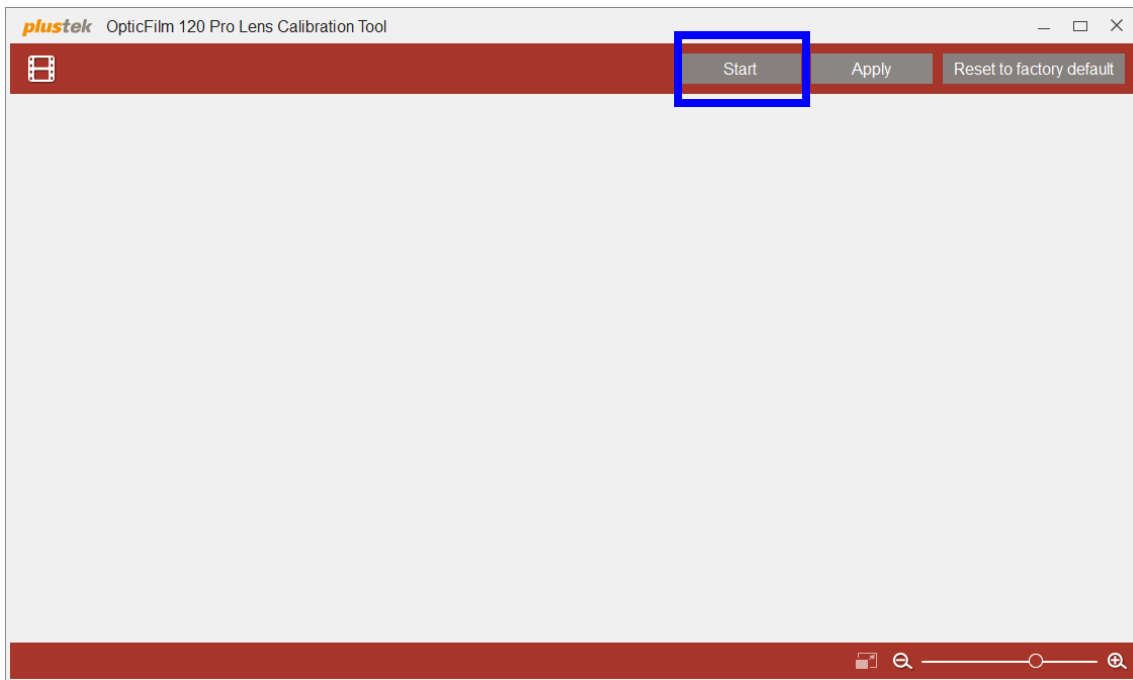
If you insert the 35mm film strip holder, the following dialog pops up. Select the film type and desired frame that you want to take as the standard, then click **OK** button. You may tick the checkbox of **Max. Res.** to scan image with the maximum resolution.



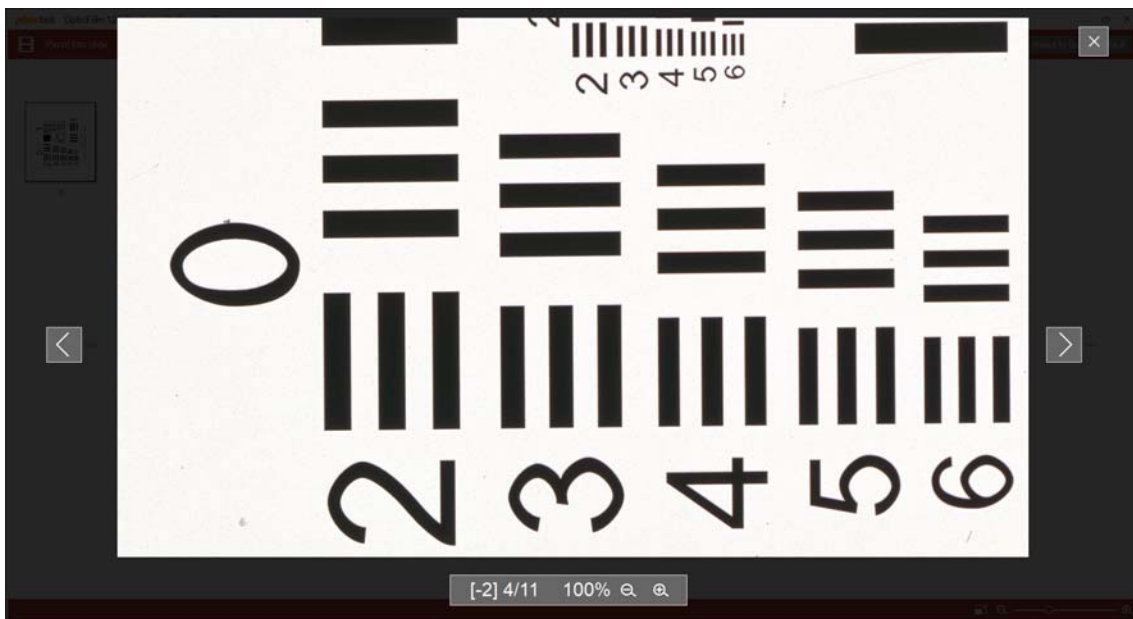
If you insert the 120 film strip holder, the following dialog pops up. Select the film type, film size and desired frame that you want to take as the standard, then click **OK** button. You may tick the checkbox of **Max. Res.** to scan image with the maximum resolution.




Click the **Start** button, and the scanner start to scan the image with 11 focus modes.

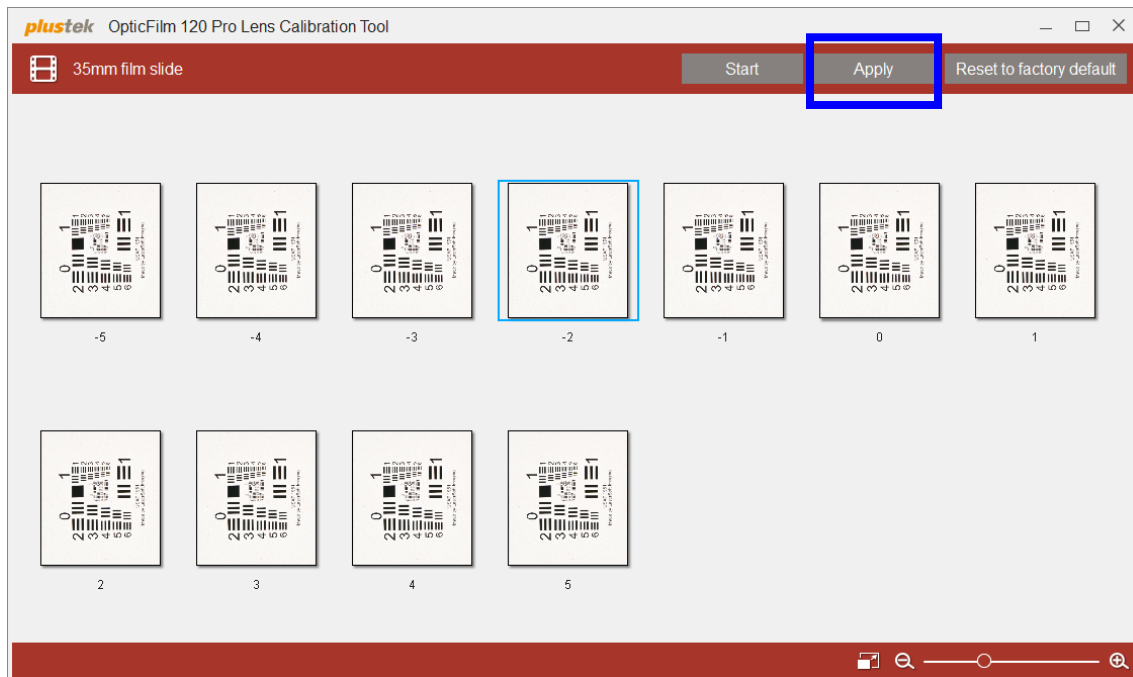



Double-click on the image to enlarge and see the details. You may use the hand tool to move the image around. To zoom in and out, just click the +/- button.



 Attention	<p>[-2] 4/11 indicates that you have selected the 4th images out of 11, that is [-2] focus mode.</p>
---	--

Select the desired image and click **Apply** button to apply the focus mode to the following scans.



 Attention	You may click Reset to factory default button to reset the value to default setting at any time while any film holder is inserted.
---	---

Appendix A: Troubleshooting

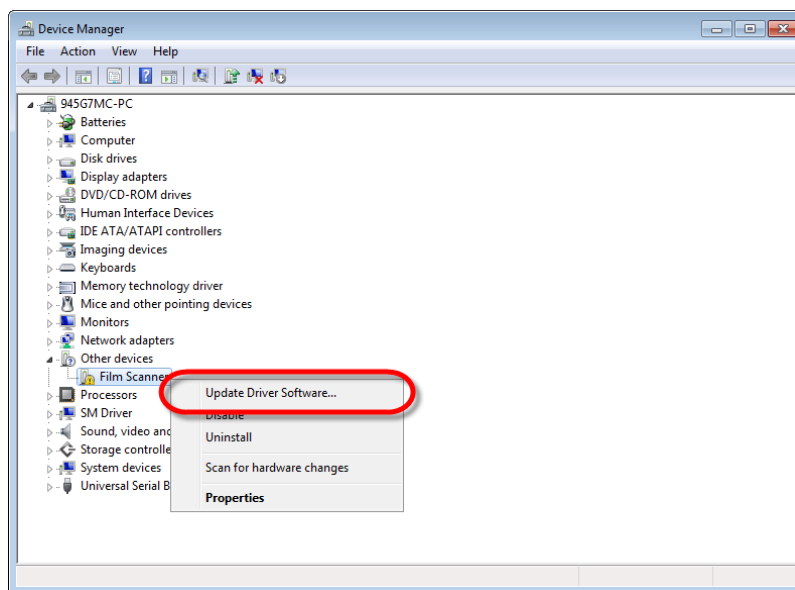
Scanner Connection

The first step to take when troubleshooting connection problems with your scanner is to check all physical connections.

Manually Installing the Software

For Windows OS: If you are facing difficulty in installing the scanner driver, please try manually installing the software.

1. Please open [Start] > [Control Panel] > [System] > [Hardware] > [Device Manager]. In the [Device Manager] window, right-click on this scanner under [Other devices] and select [Update Driver Software] from the pop-up menu.







2. Click [Browse my computer for driver software] in the window that appears, and click the [Browse] button. In the [Browse For Folder] window, select the folder that contains this scanner's driver and click the [OK] button to return to the previous screen. Click the [Next] button and click [Install this driver software anyway] if the [Windows Security] window appears.
3. Browse your USB stick and manually run the [Setup.exe] file from OPTICFILM > Windows > Plustek OpticFilm 120 Pro. Click on the [Yes] button if the [User Account Control] dialog pops up. Follow the on-screen instructions to install all software that your new USB scanner requires.

Scanning Problems

Most problems are easily solved, and some of the most common questions and their recommended solutions are listed below.

***Always make sure that you are using the latest software of Plustek and SilverFast.**

Symptom	Cause & Solution
<p>The scanner cannot be found</p> 	<ul style="list-style-type: none"> 💡 The USB cables are not connected properly Make sure that the cables are connected tightly and to the proper port. 💡 The USB cable might be too long Please use the USB cable that comes with your scanner. 💡 The scanner's power cord is not connected properly Make sure that the AC adapter is connected to an outlet. If the scanner is connected to a Surge Protector, make sure that the Surge Protector is turned on. 💡 The scanner is not power on. Press and hold the power button for 2 seconds then release the button to turn the scanner ON. 💡 Windows didn't detect the scanner <ol style="list-style-type: none"> 1) Please open [Start] > [Control Panel] > [System] > [Hardware] > [Device Manager]. 2) Please check if your scanner is properly listed under [Imaging Devices]. If it is not listed there or the device icon has an exclamation mark, please refer to "Manually Installing the Software" to install the device drivers.
<p>The scanned film appears abnormal. There is an offset in the scanned picture.</p>	<ul style="list-style-type: none"> 💡 The scanner or the surface it is placed on was bumped into during the scanning process Please press the Eject button on your scanner to eject the film holder, then reinsert the film holder. Please scan the film again and make sure the scanner or the surface it is placed on is not bumped into.
<p>The film holder is stuck inside the scanner</p>	<ul style="list-style-type: none"> 💡 The scanner's power or USB cable got disconnected during the scan or some other error cause the scan to fail while the scanner was scanning Disconnect and reconnect the power and USB cables to the scanner. The scanner will attempt to eject any inserted film holder automatically when turned on. If the film holder is not ejected automatically, please eject the film holder by pushing it through the device until it can be removed from the Rear Film Holder Slot. Please allow about 35 cm behind the scanner to remove the film holder.

<p>The film holder is automatically ejected</p>	<p> You just connected the USB cable after accidentally disconnecting it The scanner will eject any inserted film holder when connection with a computer has been established. This behavior is normal</p>
<p>The film holder is not pulled into the scanner</p>	<p> The scanner and computer are not connected via USB cable Please make sure the scanner and your computer are connected via USB cable. The scanner will not pull in the film holder if the USB cable is disconnected.</p>
<p>There is a grinding or rattling noise at the beginning of each scan</p>	<p> The scanner engages the gears and it initializes itself before scanning This noise is normal to the operation of the scanner.</p>

Appendix B: Specifications²

OpticFilm 120 Pro	
Image Sensor	CCD
Light Source	LED
Hardware Resolution	Maximum Input: 10600 dpi Maximum Output: 5300 dpi @6x12 cm
Scan Modes	Color: 48-bit input, 24/48-bit output Grayscale: 16-bit input, 8/16-bit output
Dynamic Range	N/A
Infrared	Built-in
Scanning Area (W x L)	60 mm x 120 mm
IT8 Target	Included 6x7 IT 8 slide for color accuracy
Power Supply	24 Vdc / 0.75 A
Interface	USB 3.0
Net Weight	Approx. 6.2 Kgs
Dimensions (W x D x H)	210 x 374 x 189 mm

² Hardware specifications may change at any time without prior notice.

Appendix C:

Customer Service and Warranty

If you encounter problems with your scanner, please review the installation instructions and troubleshooting suggestions contained in this guide.

Visit our website www.plustek.com for more customer service information. For further assistance call our customer support phone number listed on the website. One of our representatives will be happy to assist you from Monday through Friday in office working hours as shown below:

Europe	9:00 a.m. – 5:30 p.m. (CET)
Other Countries or Areas	9:00 a.m. – 6:00 p.m. Taiwan Time

To avoid delays, please have the following information available before calling:

- 🔍 **Scanner name and model number**
- 🔍 **Scanner serial number (located at rear of scanner near port connectors)**
- 🔍 **A detailed description of the problem**
- 🔍 **Your computer manufacturer and its model number**
- 🔍 **The speed of your CPU (Pentium 133, etc.)**
- 🔍 **Your current operating system and BIOS (optional)**
- 🔍 **Name of software package(s), version or release number and manufacturer of the software**
- 🔍 **Other USB devices installed**

Service & Support Information (For EU country only)

Where appropriate, the period of availability of spare parts and the possibilities of upgrading products information. Please ask local distributors and suppliers for spare parts information and product upgrade information.

Information requested by relevant Implementing Measure. Please ask local distributors and suppliers for the related information of Implementing Measure test report.

Do not dispose anything of products before you ask local distributors and suppliers to get correct information for decreases of environmental impact with right methods and procedures.

If you want to disposals the product and/or an accessory, please ask local distributors and suppliers to get the contact information of nearest disposal manufactures.

If you have any maintenance inquiry, please ask local distributors and suppliers to get the contact information of nearest maintenance center in order to extend the product usage life time.

If you want to maintain and clearance the product, please ask local distributors and

suppliers to get the right information of nearest stores.

Statement of Limited Warranty

This Statement of Limited Warranty applies only to the options you originally purchase for your use, and not for resale, from an authorized reseller.

The manufacturer warranty includes all parts and labor, and is not valid without the receipt of original purchase. To obtain warranty service, you may contact the authorized dealer or distributor, or visit our website to check out the available service information, or send a request via E-mail for further help.

If you transfer this product to another user, warranty service is available to that user for the remainder of the warranty period. You should give your proof of purchase and this statement to that user.

We warrant that this machine will be in good working order and will conform to its functional descriptions in the documentation provided. Upon provision of proof of purchase, replacement parts assume the remaining warranty of the parts they replace.

Before presenting this product for warranty service, you must remove all programmes, data and removable storage media. Products returned without guides and software will be replaced without guides and software.

This Limited Warranty service does not provide for carry-in exchange when the problem results from accident, disaster, vandalism, misuse, abuse, unsuitable environment, programme modification, another machine or non-vendor modification for this product.

If this product is an optional feature, this Limited Warranty applies only when the feature is used in a machine for which it was designed.

If you have any questions about your Limited Warranty, contact the approved retailer from whom you bought the product or the manufacturer.

THIS LIMITED WARRANTY REPLACES ALL OTHER WARRANTIES, EXPRESS OR IMPLIED, INCLUDING, BUT NOT LIMITED TO, THE IMPLIED WARRANTIES OF MERCHANTABILITY AND FITNESS FOR A PARTICULAR PURPOSE. HOWEVER, SOME LAWS DO NOT ALLOW THE EXCLUSION OF IMPLIED WARRANTIES. IF THESE LAWS APPLY, THEN ALL EXPRESS AND IMPLIED WARRANTIES ARE LIMITED IN DURATION TO THE WARRANTY PERIOD. NO OTHER WARRANTIES APPLY AFTER THAT PERIOD.

Some jurisdictions do not allow limitations on how long an implied warranty lasts, so the above limitation may not apply.

Under no circumstances are we liable for any of the following:

- ☛ Third party claims against you for losses or damages.
- ☛ Loss of, or damage to, your records or data; or
- ☛ Economic consequential damages (including lost profits or savings) or incidental

damages, even if we are informed of their possibility.

Some jurisdictions do not allow the exclusion or limitations of incidental or consequential damages, so the above limitation or exclusion may not apply to you.

This Limited Warranty gives you specific legal rights, and you may also have other rights that vary from jurisdiction to jurisdiction.

To obtain the warranty service, you may:

- contact the authorized dealer or distributor.
- visit our website to check out the up-to-date service.
- send a request via E-mail for further help.

FCC Radio Frequency Statement

This equipment has been tested and found to comply with the limits for a Class B digital device, pursuant to part 15 of the FCC rules. These limits are designed to provide reasonable protection against harmful interference in a residential installation.

This equipment generates, uses and can radiate radio frequency energy and, if not installed and used in accordance with the instructions, may cause harmful interference to radio communications. However, there is no guarantee that interference will not occur in a particular television reception (which can be determined by turning the equipment off and on), the user is encouraged to try to correct the interference by one or more of the following measures:

- Reorient or relocate the receiving antenna.
- Increase the separation between the equipment and receiver.
- Connect the equipment to an outlet on a circuit different from that which the receiver is connected.
- Shielded interconnect cables and shielded power cord which are supplied with this equipment must be employed with this equipment to ensure compliance with the pertinent RF emission limits governing this device.
- Consult the dealer or an experienced radio/TV technician for help if the conditions persist.
- Changes or modifications not expressly approved by the manufacturer or authorized service center could void the user's authority to operate this equipment.