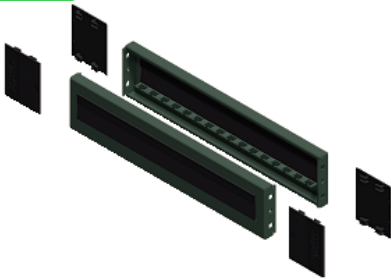


Product data sheet

Specifications



Spacial SF/SM panels with brush for plinth - 100x800x800 mm

NSYSPB8100

Main

Range	Spacial
Accessory / separate part category	Enclosure accessory
Product or component type	Plinth panels with brush
Anwendung	Multi-purpose
Nennmaße des Gehäuses	-
Device composition	fixing elements 4 corner cover 2 panels with brush
Range compatibility	Spacial SF Spacial SM
Mounting support	Front plinth

Complementary

Fixing mode	By screws - on corners of plinth location
Colour	Grey (RAL 7022)
Surface finish	Epoxy-polyester powder
Height	100 mm
Width	800 mm nominal: 655 mm real:

Packing Units

Unit Type of Package 1	PCE
Number of Units in Package 1	1
Package 1 Weight	2.314 kg
Package 1 Height	11.5 cm
Package 1 width	65.5 cm
Package 1 Length	6.0 cm

Offer Sustainability

Sustainable offer status	Green Premium product
REACH Regulation	REACH Declaration

REACH free of SVHC	Yes
EU RoHS Directive	Pro-active compliance (Product out of EU RoHS legal scope) EU RoHS Declaration
Toxic heavy metal free	Yes
Mercury free	Yes
RoHS exemption information	Yes
China RoHS Regulation	China RoHS declaration Pro-active China RoHS declaration (out of China RoHS legal scope)
Environmental Disclosure	Product Environmental Profile

Contractual warranty

Warranty	18 months
----------	-----------