

WIRELESS NETWORK SOLUTIONS FOR SMART CITIES



Series 7 Fibre Ethernet Switches

SILVERNET

WIRELESS-NETWORK-SOLUTIONS

CONTENTS



01

Network Solutions

- 1.1 Smart City
- 1.2 Intelligent Transportation
- 1.3 Intelligent Energy
- 1.4 Industrial Automation

02

Environmental Needs

- 2.1 Reliability Highlights
- 2.2 Professional Testing
- 2.3 Hardware Advantage

03

Models & Features

- 3.1 Switch Naming Rules
- 3.2 Range & Feature Table
- 3.3 Series 7 Switch
- 3.4 Series 5 Switch
- 3.5 Smart Web Management
- 3.6 PoE Port Time Schedule
- 3.7 ERPS/Ring Management
- 3.8 Optical Transceivers
- 3.9 Power Supplies

04

Why Choose SilverNet

- 4.1 Successful Switch Deployment
- 4.2 Quality Control Assured
- 4.3 System Integrations
- 4.4 Long-term Partnership

01 Network Solutions

We provide customers with rugged industrial grade network communication products to ensure efficient, stable and reliable operation between system networks.



Smart City

- Security Emergency
- Network Security
- Intelligent Education



Intelligent Energy

- Power Industry
- Petroleum and Petrochemical
- New-energy Vehicles



Intelligent Transportation

- Rail Traffic
- Highway



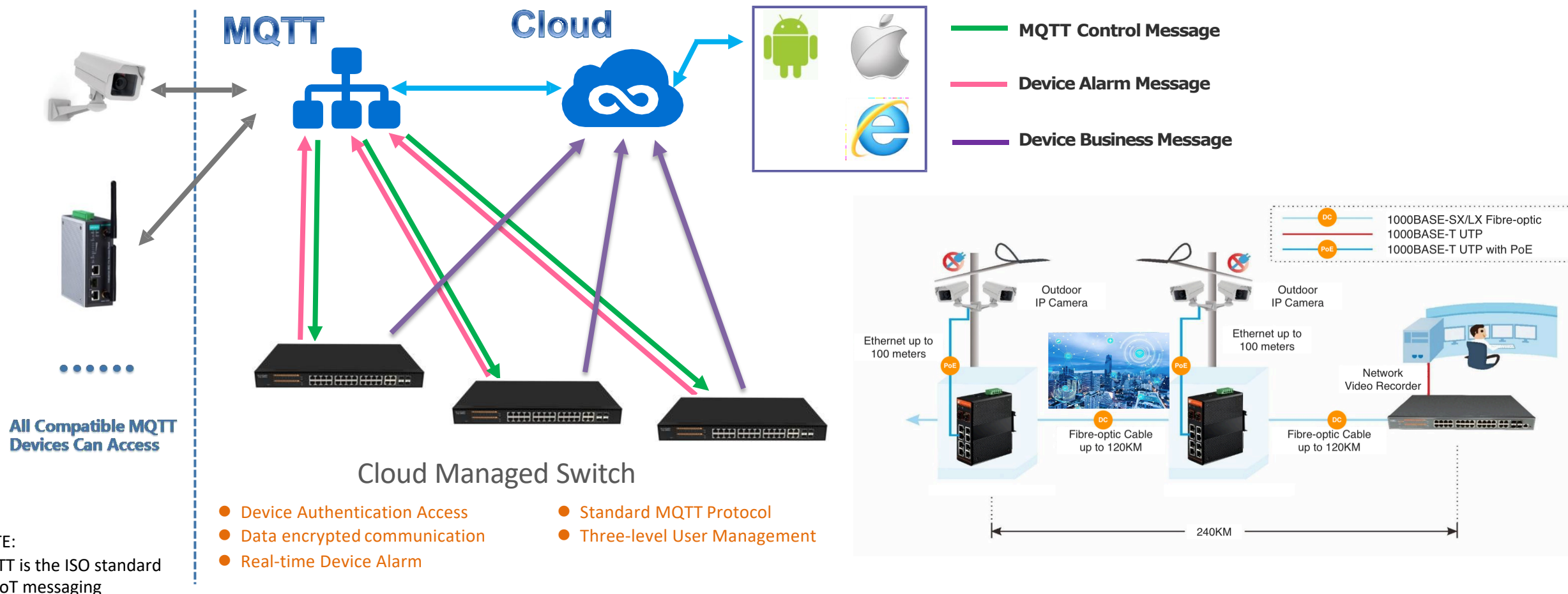
Industrial Automation

- Intelligent Manufacturing
- Intelligent Factory

1.1 Smart City

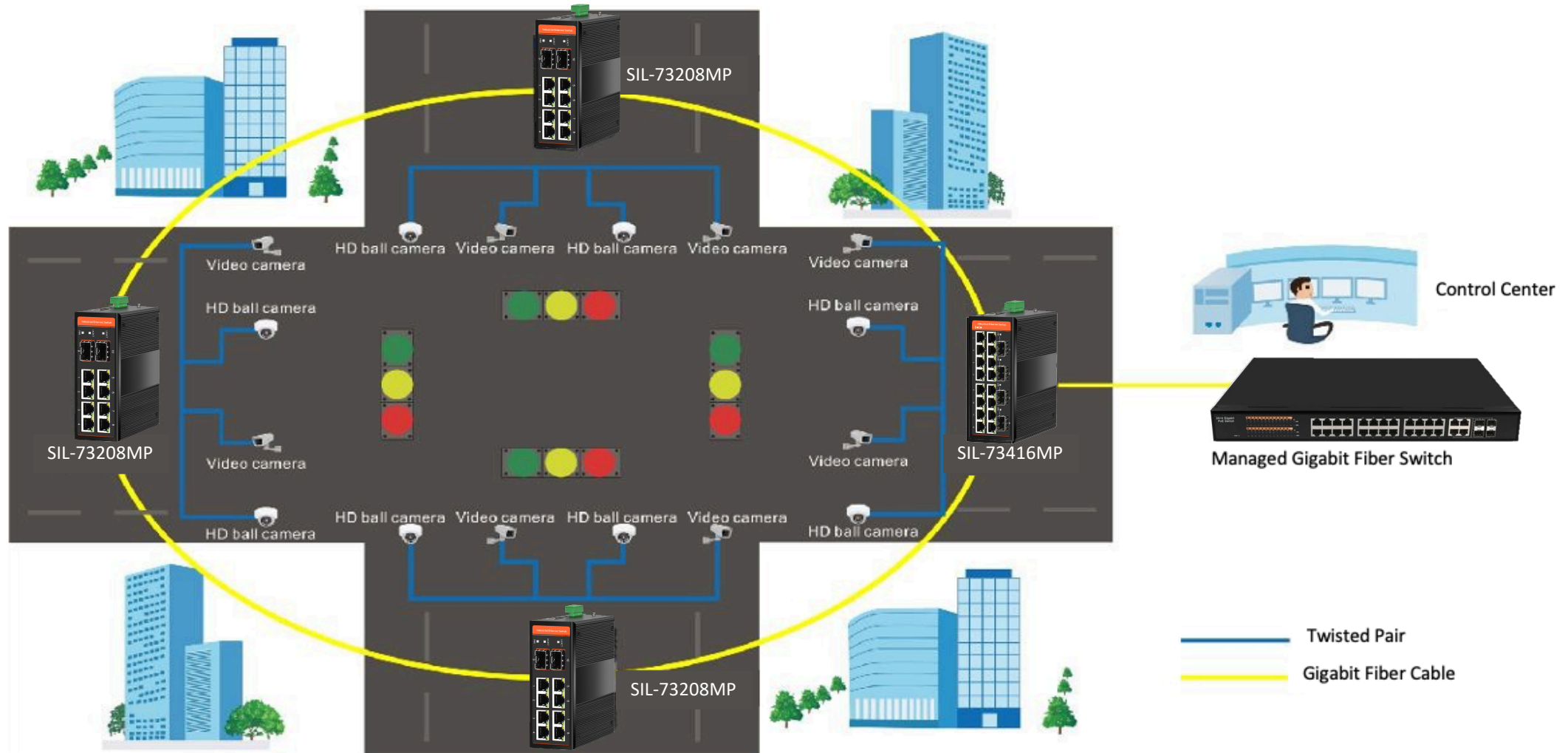
The construction of smart cities make full use of emerging technologies - the Internet of Things, the Internet, Cloud Computing, and Intelligent Science.

We can build a complete city network including city sub-areas, helping you to quickly build a safe and reliable smart city.



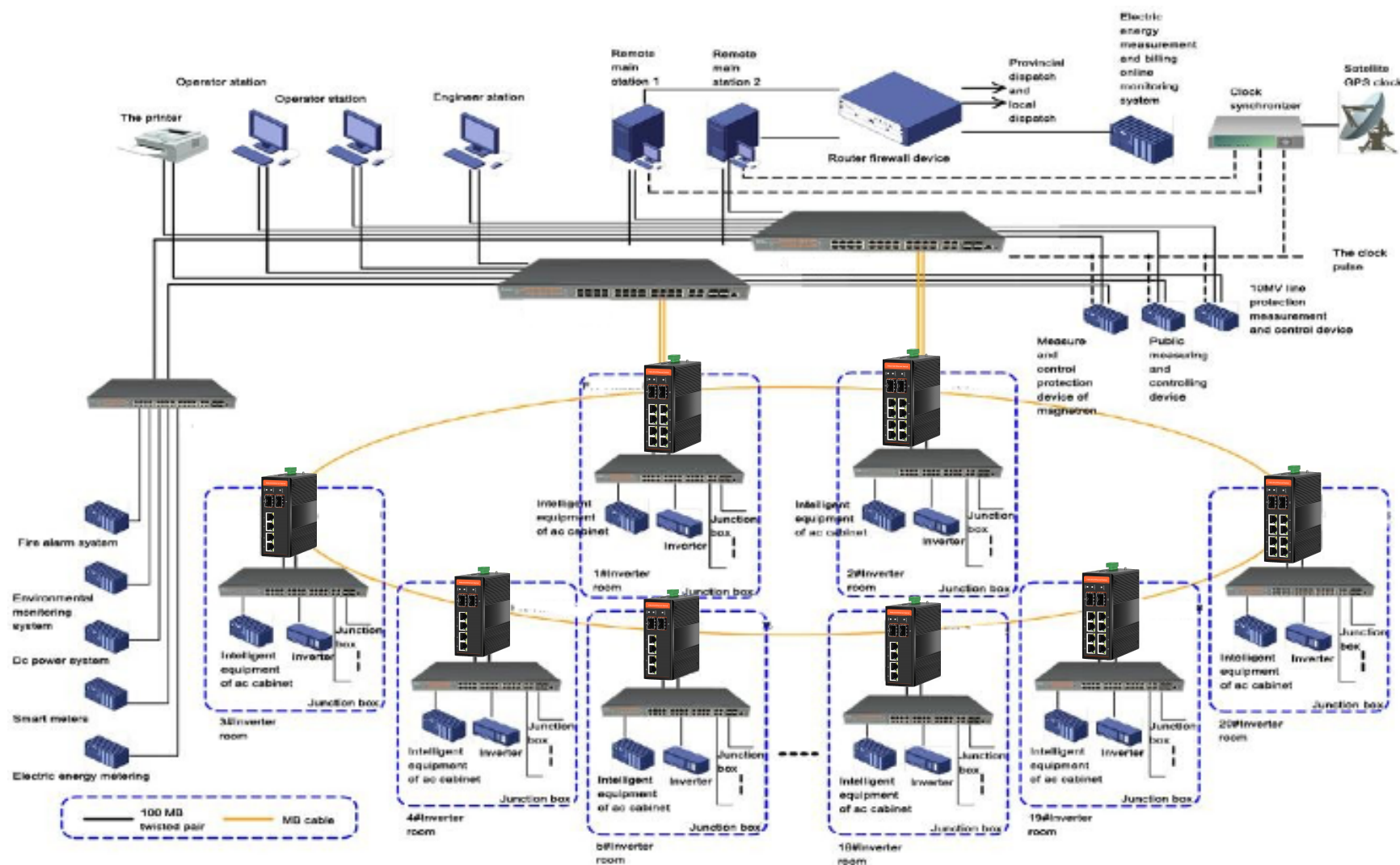
1.2 Intelligent Transportation

The Intelligent Transportation System (ITS) provides communications and technology to all commuters to ensure safe, convenient, comfortable, efficient and environmentally friendly travel.



1.3 Intelligent Energy

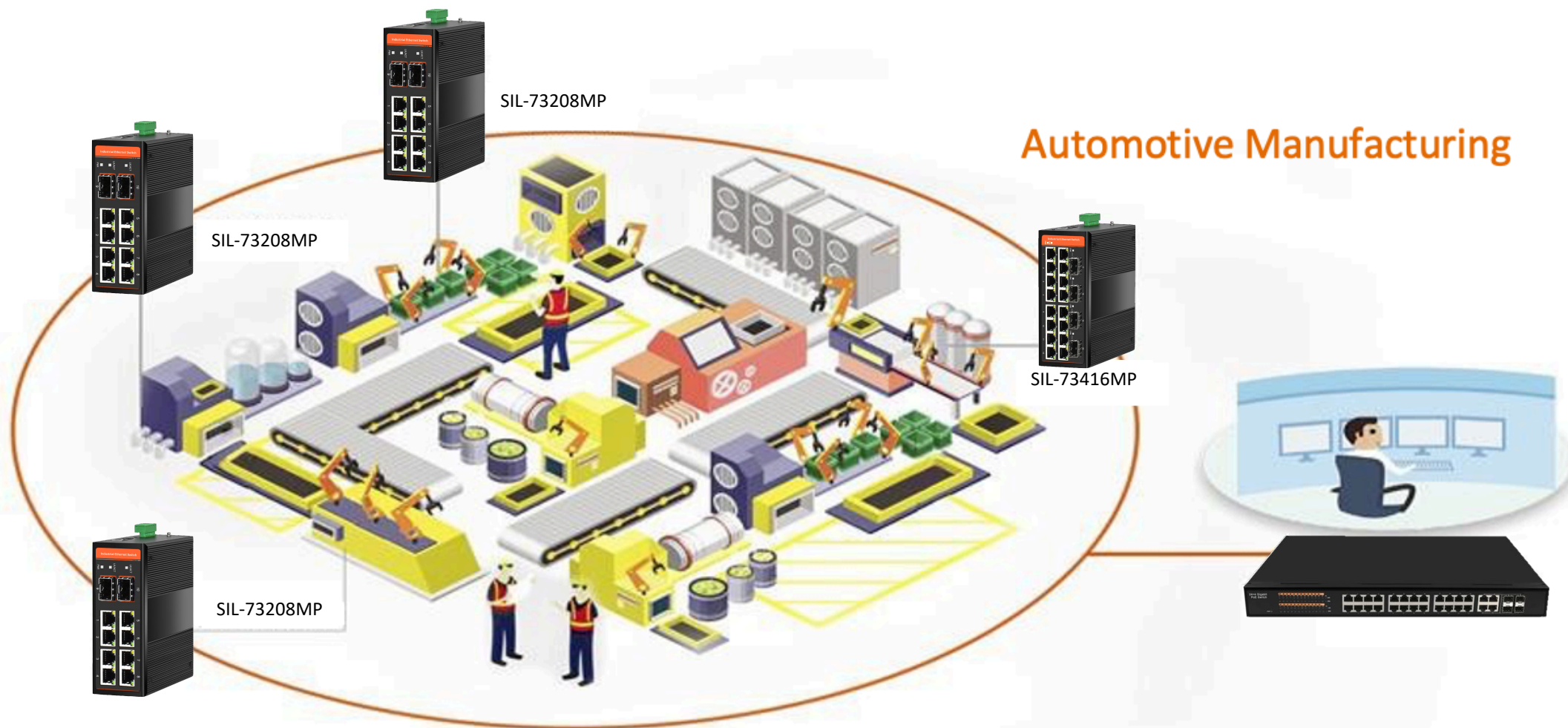
Solar Power monitoring systems ensure reliability and maintenance can be completed with on hand spares and in an environmentally friendly way, these are often in remote locations so must be reliable.



1.4 Industrial Automation

SilverNet relies on industrial ethernet to offer smart manufacturing, smart factories, industrial automation, mine communication networks and other field solutions.

Automotive Manufacturing



02 Environmental Needs

Many installation locations are harsh environments that a standard switch cannot withstand and end up failing. In mission critical systems a network failure can cause havoc.

Energy Industry

- Dust-Proof
- Anti-Knock
- Damp-Proof
- Water-Proof

Rail Transportation

- Lightning-Proof
- Anti-Shake
- ESD
- Damp-Proof

Security Monitoring

- Lightning-Proof
- Damp-Proof
- Dust-Proof
- High and Low Temperature



Intelligent Transportation

- High and Low Temperature
- Damp-Proof
- Corrosion Prevention
- Lightning-Proof
- Water-Proof

Photovoltaic Power Generation

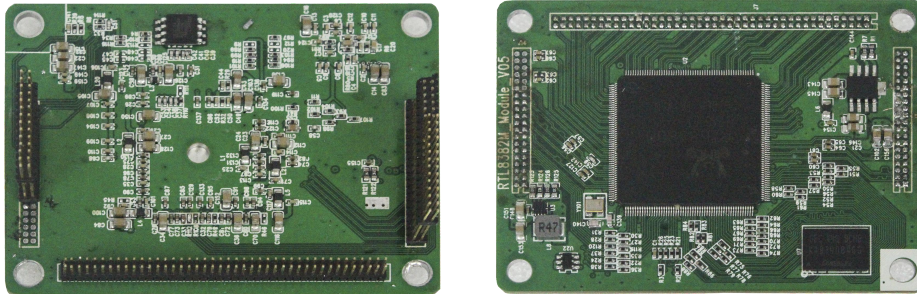
- Desert and Gobi
- Heat Resistance
- Dust-Proof

Factory Automation

- ESD
- Dust-Proof
- Jamproof
- Mute no Fan

2.1 Reliability Highlights

We only use high quality components and chipsets in the design of our product and to prove reliability, our Industrial switches have an 500,000 hr MTBF.



- ✓ Support Auto-MDIX and full/half duplex self-negotiation mode
- ✓ Support 10K bytes giant frame, compatible with various extension protocol
- ✓ Compliant with most management
- ✓ 8K MAC address table
- ✓ Support IEEE802.3az energy efficient Ethernet technology
- ✓ Support IPv6 Protocol
- ✓ Electric 8KV surge protection, easy to use in outdoor environment

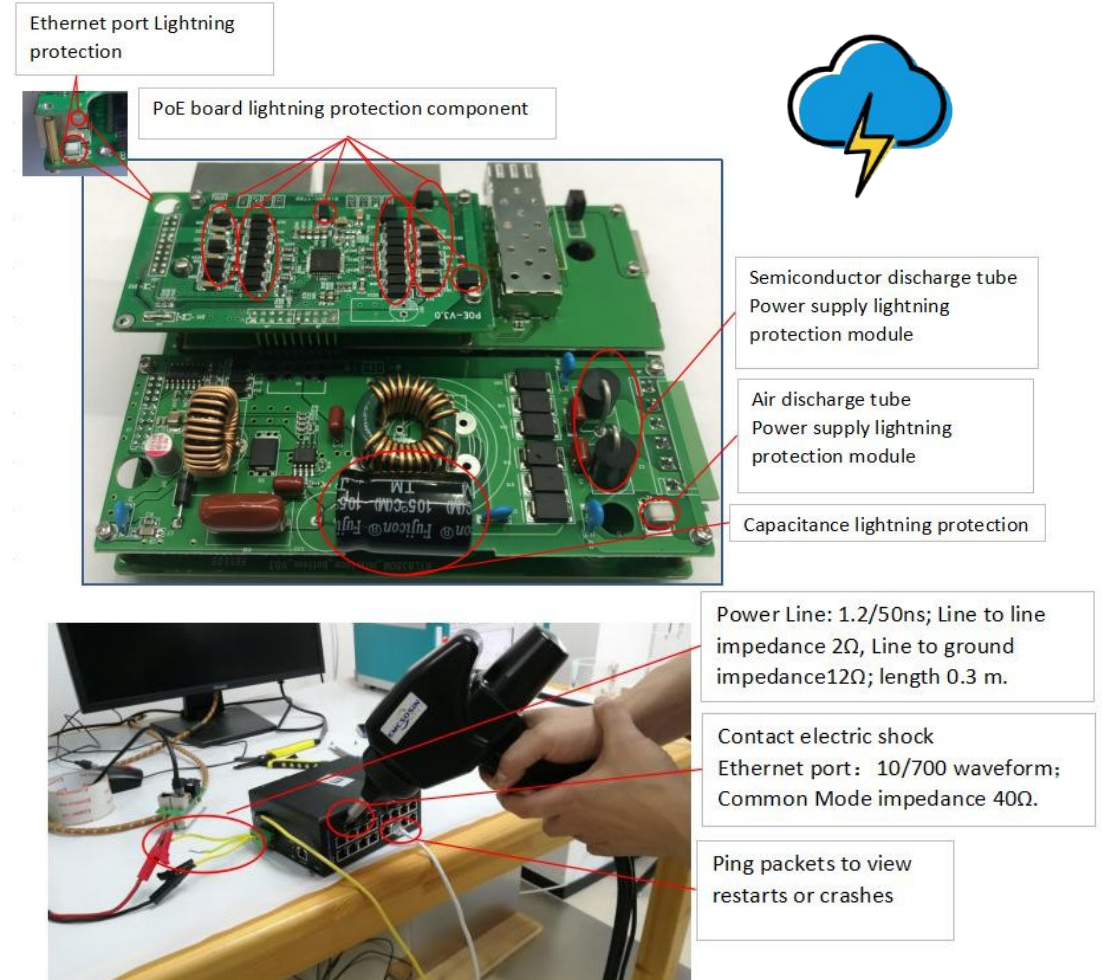
2.2 Professional Testing

Lightning Protection Test		Switch	IMS	IMS+P	IUS	IUS+P	CMS	CMS+P	CUS	CUS+P
Power Supply Test	AC	CM	10KV	10KV	10KV	10KV	10KV	10KV	10KV	10KV
		DM	8KV	8KV	8KV	8KV	8KV	8KV	8KV	8KV
	DC	CM	8KV	8KV	8KV	8KV	8KV	8KV	8KV	8KV
		DM	6KV	6KV	6KV	6KV	6KV	6KV	6KV	6KV
Ethernet Port Test	AC	CM	8KV	6KV	8KV	6KV	8KV	6KV	8KV	6KV
		DM	1KV	1KV	1KV	1KV	1KV	1KV	1KV	1KV
	DC	CM	8KV	6KV	8KV	6KV	8KV	6KV	8KV	6KV
		DM	1KV	1KV	1KV	1KV	1KV	1KV	1KV	1KV
ESD Test	Contact Electric Shock		Restart	Restart	Flash	Flash	Restart	Restart	Flash	Flash
	Non-Contact Electric Shock		15KV	15KV	15KV	15KV	15KV	15KV	15KV	15KV

1. IMS+P: Industrial Managed Switch with PoE
2. IUS+P: Industrial Unmanaged Switch with PoE
3. CMS+P: Commercial Managed Switch with PoE
4. CUS+P: Commercial Unmanaged Switch with PoE
5. CM: Common Mode
6. DM: Differential Mode
7. Flash: 4/6/8KV-Flash 0.5-1s
8. Restart: 4/6/8KV-The system will restart and will not crash

Lightning Protection Test Stand:

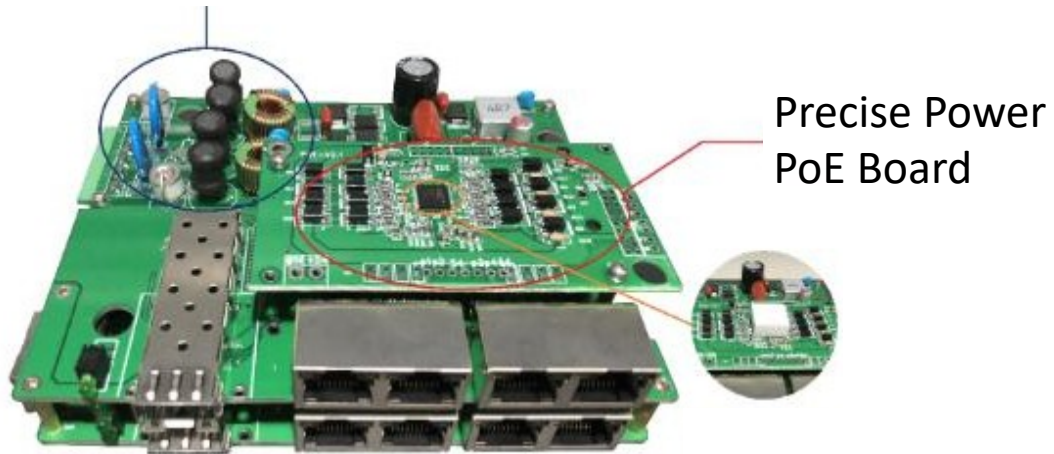
1. Power Line: 1.2/50ns; Line to line impedance 2Ω, Line to ground impedance 12Ω; length 0.3 m.
2. Ethernet port : 10/700 waveform ; Common Mode impedance 40Ω.



2.3 Hardware Advantage

Extensive testing and forced failures mean that our hardware is incredibly rugged and reliable.

Power 8KV ESD and 4KV surge protection
Industrial Grade Lightning Prevention



Thermal silica connected to PoE and main chipset,
closely fitted to the aluminum case, to achieve the
most heat dissipation



03 Models and Features

Series 7 Industrial PoE Switch



Unmanaged FE/GbE
Industrial PoE Media
Converter

- 1TX+1FX

SIL-73101P



Managed/Unmanaged
FE/GbE Industrial PoE
Switch
- 4TX+2FX

SIL-73204P

SIL-73204MP



Managed/Unmanaged
FE/GbE Industrial PoE
Switch
- 8TX+4FX

SIL-73208P

SIL-73208MP



Managed/Unmanaged
FE/GbE Industrial PoE
Switch
- 16TX+4FX

SIL-73416MP



Managed/Unmanaged
FE/GbE Industrial PoE
Switch
- 24TX

SIL-73024MP



Managed/Unmanaged / Wifi
FE/GbE Industrial PoE Switch

- 8TX+16FX+4Combo
- 16TX+8FX+4Combo
- 24TX+4Combo

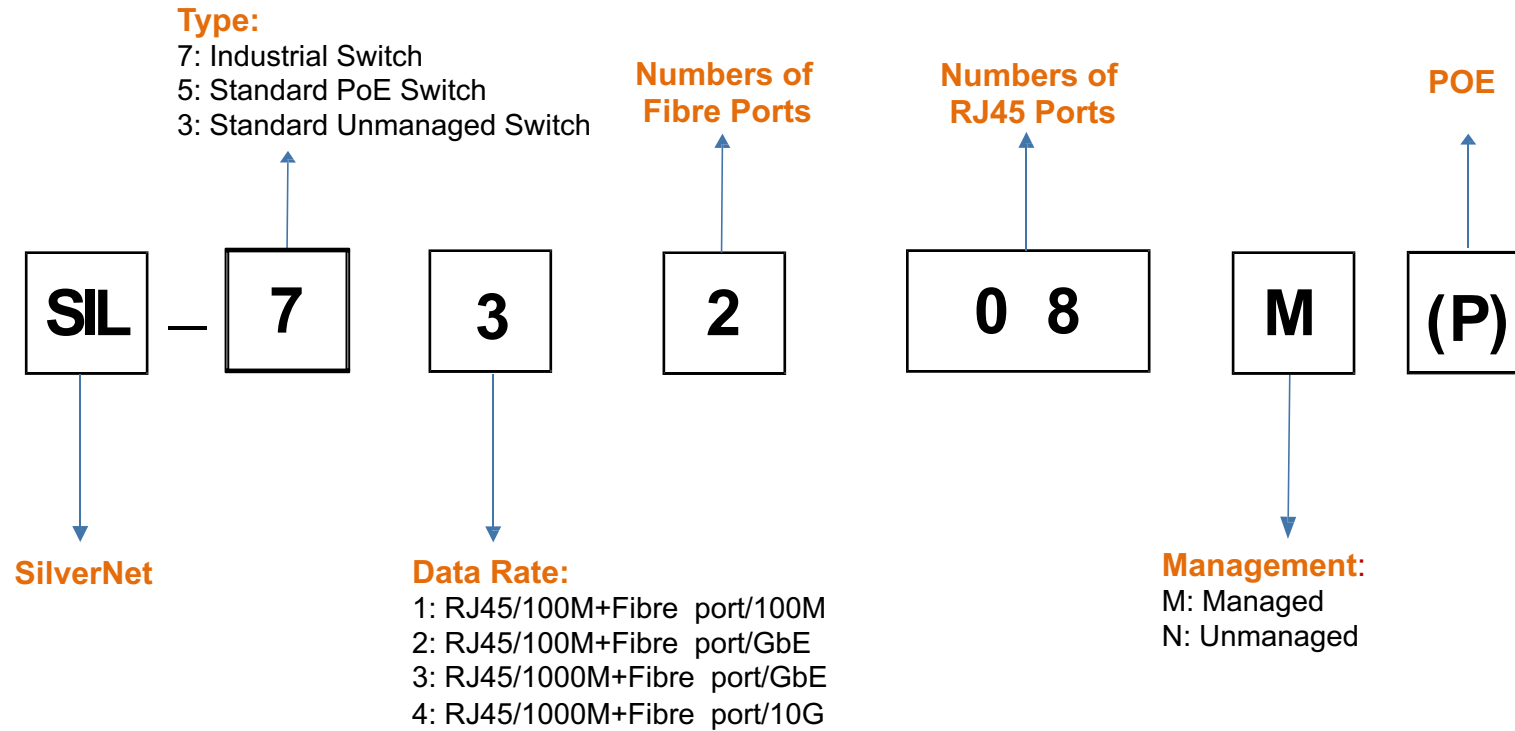
Coming up in 2020 Q4 / 2021 Q1



**Product
Development**

3.1 Switch Naming Rules

For simplicity we name our switches based on their hardware configuration, thus making identifying which product you have very simple.



Example

SIL-73416MP *Industrial Gigabit Managed Switch, 10/100/1000M, 16Port PoE+ GbE, 4x SFP port*

3.2 Range & FeatureTable

Here's a brief table of our Series 7 **Industrial** and Series 5 **Commercial** network switches.

Industrial/PoE Ethernet Switch		SW Chipset	With PoE Chipset	Bandwidth	Max. Power per Port	Total Power Budget	Packet Buffer	Packet Length	MAC Address	Non-PoE Lightning Protection	With PoE Lightning Protection
SIL-73101P	1 x 10/100/1000M Base-TX + 1 x 100/1000M Base-FX SFP	RTL8370MBI	IC+(IP808)	20G	30W	60W	2M	9K	4K	8KV	6KV
SIL-73204P	4 x 10/100/1000M Base-TX + 2 x 100/1000M Base-FX SFP	RTL8370MBI	IC+(IP808)	20G	30W	240W	2M	9K	4K	8KV	6KV
SIL-73208P	8 x 10/100/1000M Base-TX + 2 x 100/1000M Base-FX SFP	RTL8370MBI	IC+(IP808)	20G	30W	240W	2M	9K	4K	8KV	6KV
SIL-73204MP	Managed, 4 x 10/100/1000M Base-TX + 2 x 100/1000M Base-FX SFP	RTL8382MI	IC+(IP808)	56G	30W	240W	4M	10K	8K	8KV	6KV
SIL-73208MP	Managed, 8 x 10/100/1000M Base-TX + 2 x 100/1000M Base-FX SFP	RTL8382MI	IC+(IP808)	56G	30W	240W	4M	10K	8K	8KV	6KV
SIL-73416MP	Managed, 16 x 10/100/1000M Base-TX + 8 x 100/1000M Base-FX SFP	RTL8382MI	IC+(IP808)	56G	30W	480W	4M	10K	8K	8KV	6KV
SIL-73024MP	Managed, 24 x 10/100/1000M Base-TX	RTL8382MI	IC+(IP808)	56G	30W	480W	4M	10K	8K	8KV	6KV

3.3 Series 7 Industrial Switch



20Ports Industrial Managed Switch



SIL-73416MP

- ✓ 16 x 10/100/1000Base-T Gigabit Ethernet Port
- ✓ 4 x 100/1000Base-X SFP Slot
- ✓ 56Gbps Bandwidth, 8K MAC Address table, Jumbo Frame 10Kbytes
- ✓ SNMP Web Management Interface, Remote Management
- ✓ IGMP Snooping for Multicasting Network
- ✓ Port Mirroring, TP Auto-Negotiation, AUTO MDI-X
- ✓ IEEE 802.1p Qos, VoIP Qos, 1Q-in-Q, IEEE 802.1x User Certification
- ✓ IEEE 802.3az energy efficient Ethernet technology
- ✓ Support IPv6 Protocol
- ✓ Loop protection to avoid broadcast loops
- ✓ Link Layer Discovery Protocol (LLDP)
- ✓ Electric 8KV surge protection

3.5 Smart Web Management

SIL 73208MP - Device Summary x SIL 73204MP - Sign In x +

Not secure | 192.168.0.129/main.asp

SILVERNET
WIRELESS-NETWORK-SOLUTIONS

LINK

LINK

PWR

10

8

6

4

2

9

7

6

5

1

Running Time: 11 Day 23:49:52 Save Logout

Expand | Collapse

Device Summary

System

Management

Base Configuration

Advanced

Alarm

PoE Management

Extended

Device Information

Product Model	SIL 73208MP
Product MAC Address	5011EB-0E708F
Product Serial Number	01102020000001
Software Released Date	2020-11-06 09:30:30
Date And Time	2020-11-18 12:11:39
Running Time	11 Day 23 Hour 49 Minute 54 Second
Current Temperature	30.0 °C
Power Supply Status	Power 1

Usage

69.9%

22.7%

3.8%

CPU

Memory

Nvram

Refresh

Port	Rx Rate(bps)	Tx Rate(bps)	Wavelength(nm)
GE/1	0.00	0.00	N/A
GE/2	4.35M	3.13K	N/A
GE/3	0.00	0.00	N/A
GE/4	18.88K	4.36M	N/A
GE/5	0.00	0.00	N/A
GE/6	0.00		
GE/7	0.00		
GE/8	0.00		
GE/9	0.00		
GE/10	0.00		

SILVERNET
WIRELESS-NETWORK-SOLUTIONS

LINK

LINK

PWR

10

8

6

4

2

9

7

6

5

1

Running Time: 10 Day 23:38:30 Save Logout

Expand | Collapse

Device Summary

System

Management

Base Configuration

Advanced

Alarm

PoE Management

Port Config

Smart Power Config

Time Range Config

Timing Supply Config

Extended

PoE Global Setting

Management Mode	class-consump
Max Supply Power	240 (0~300 W)
PoE Usage Threshold	85 (0~100%)
Current Power Consumption	2% 5.8/240W
Total Reserved Power	2% 5.9/240W

Note: If you want to disable PoE mode, you must disable the port smart power and timing power supply.

Port	Status	Running Status				PD Class	Admin Status		
		Current Used(mA)	Power Used (W)	Requested Power (W)	Allocated Power (W)		PoE Mode	Priority	Power Limit (W)
#							*	*	
GE/1	No PD Detected	0	0	0	0	Unknown	Enabled PoE+	Low	30.0
GE/2	PoE turned ON	54	2.5	30	30	Class 4	Enabled PoE+	Low	30.0
GE/3	No PD Detected	0	0	0	0	Unknown	Enabled PoE+	Low	30.0
GE/4	PoE turned ON	72	3.3	15.4	15.4	Class 0	Enabled PoE+	Low	30.0
GE/5	No PD Detected	0	0	0	0	Unknown	Enabled PoE+	Low	30.0

Apply Refresh

3.6 PoE Port Time Schedule for Energy Saving

SIL 73208MP - Time Range Conf x +

← → ↺

Not secure | 192.168.0.129/main.asp

☆ ☆ ☆

⋮

SILVERNET
WIRELESS-NETWORK-SOLUTIONS

SILVERNET

LK/ACK
LK/ACK
PWR

10
8

3
7

8
6

4
5

2
1

Running Time: 12 Day 00:09:49 Save Logout

Expand| Collapse

Device Summary

System

Management

Base Configuration

Advanced

Alarm

PoE Management

Port Config

Smart Power Config

Time Range Config

Timing Supply Config

Extended

<input type="checkbox"/>	Name	Status	Time
<input type="checkbox"/>	T1	Absolute	2021-01-01 00:00:00 ~ 2021-01-01 00:00:00
<input type="checkbox"/>	T2	Periodic	Mon - Sat 19:00:00 ~ 02:00:00
<input type="checkbox"/>	T3	Periodic	Sun, Sat 00:00:00 ~ 00:00:00

Add Modify Delete

8 AM

5 PM

5 PM

8 AM

PoE Switch

1000BASE-T UTP with PoE

Power On
6watts

Power On
6watts

Power On
12watts

Power On
12watts

Total Consumption:36 watts/hr

* Total Saved = 10800watts/month

PoE Switch

1000BASE-T UTP with PoE

Power Off
6watts

Power Off
6watts

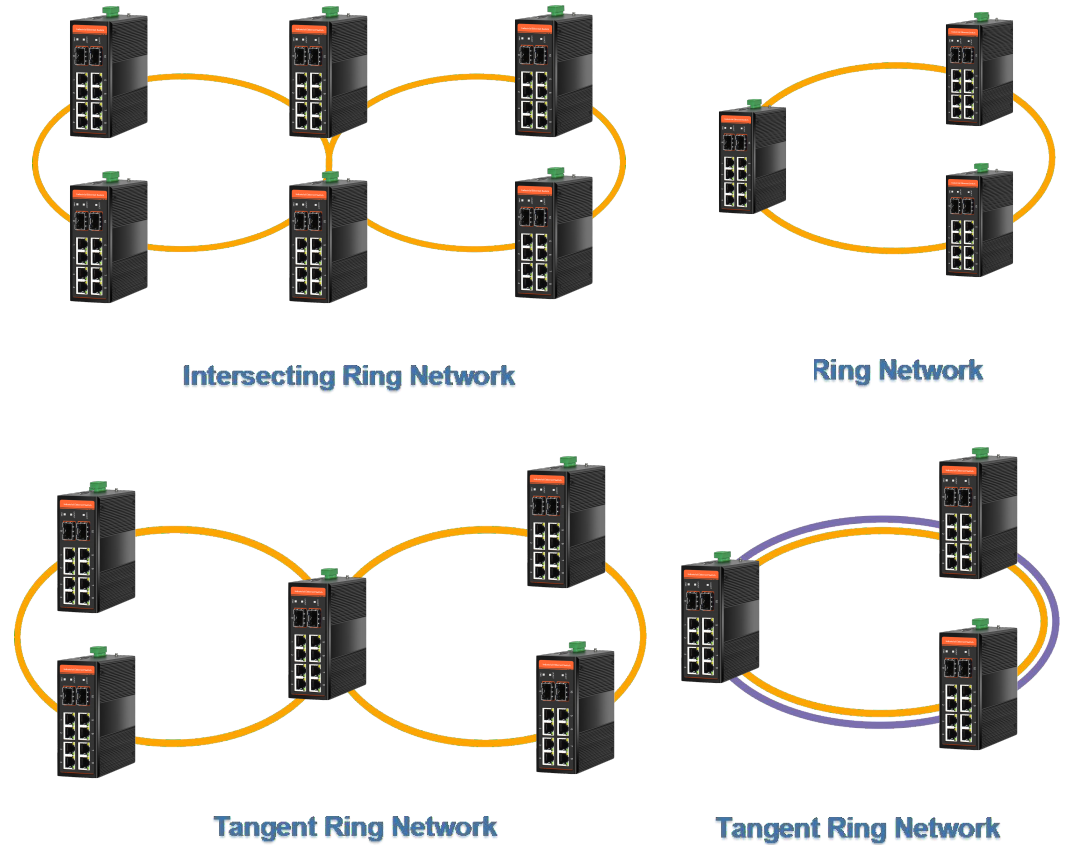
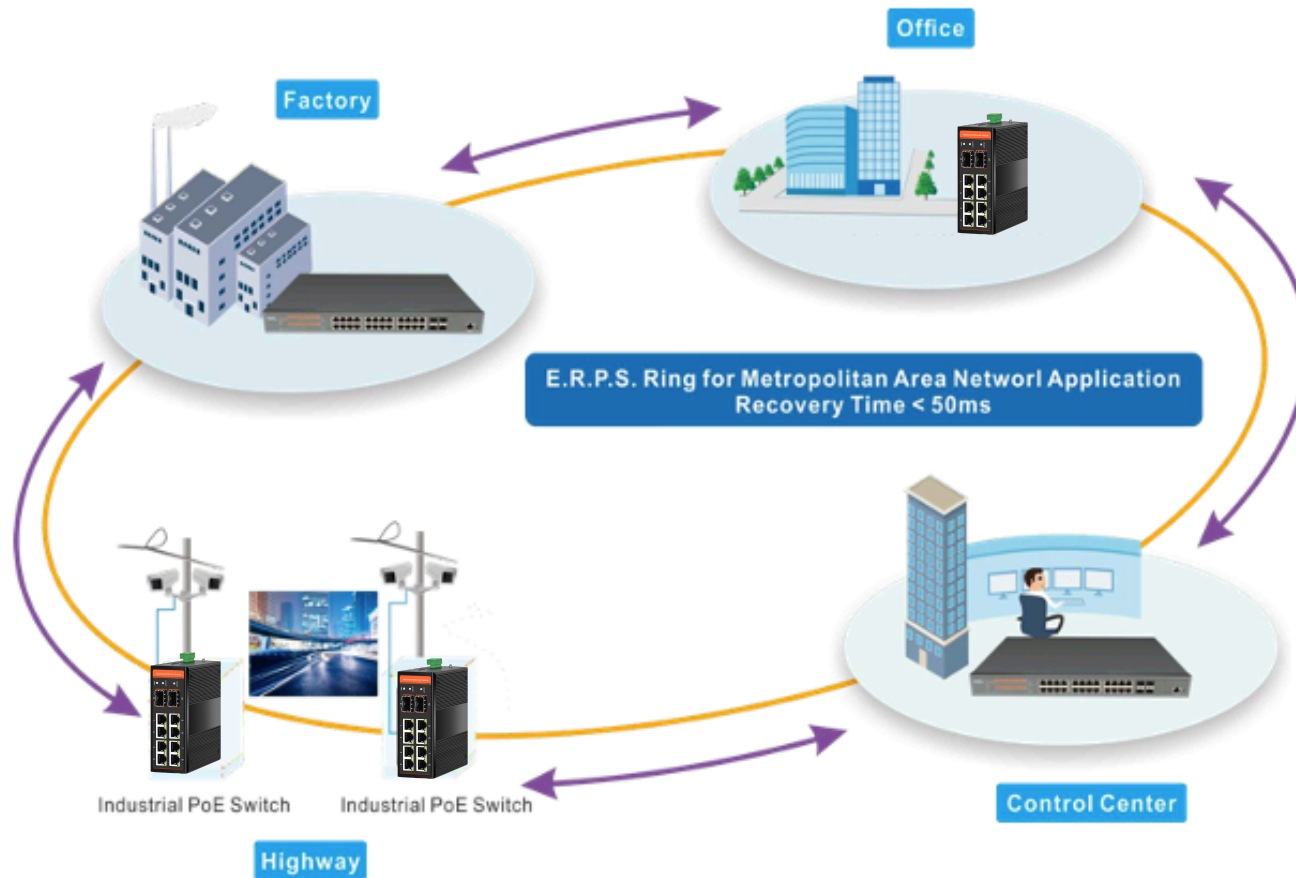
Power Off
12watts

Power On
12watts

Save 24 watts/hr during off-business hours

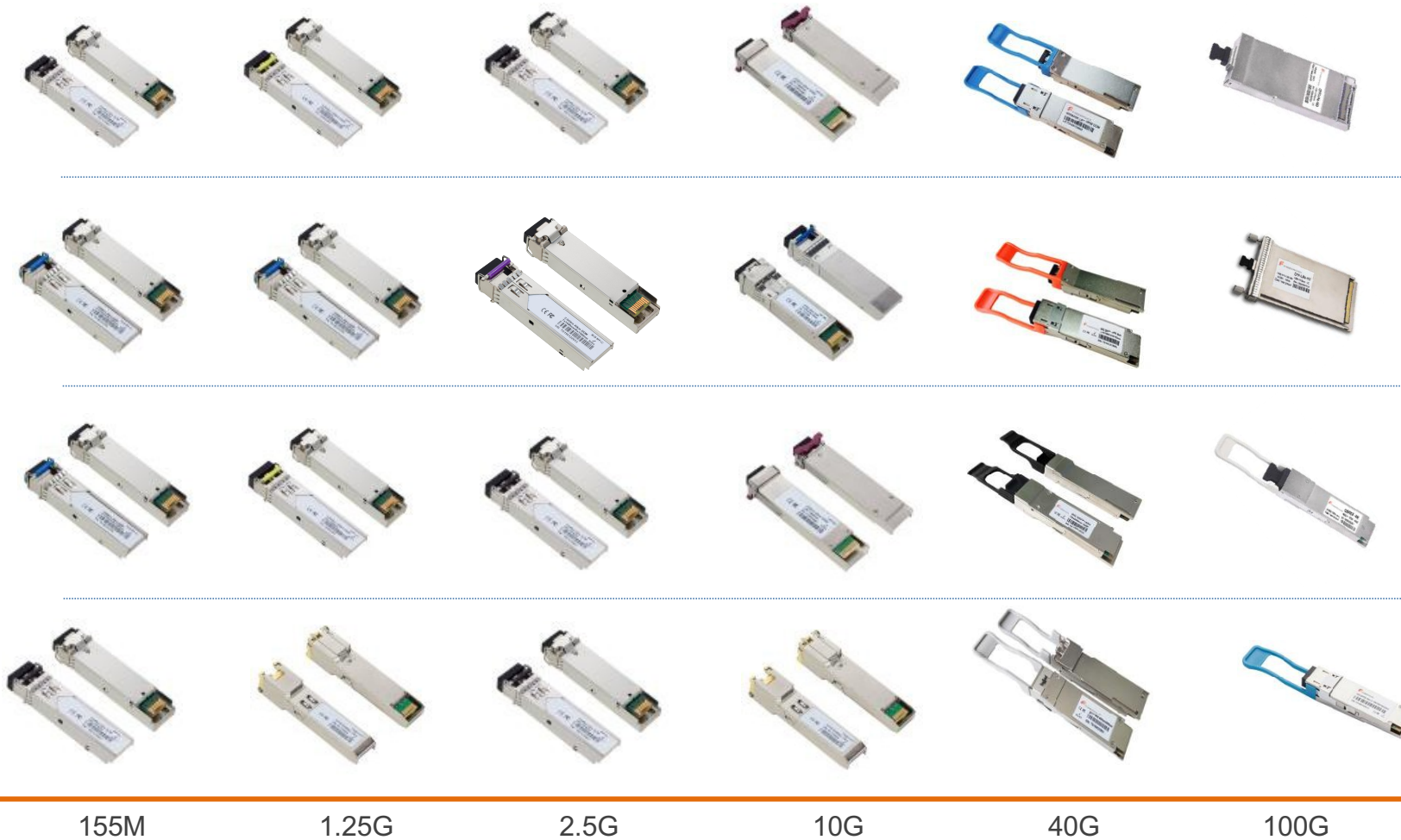
3.7 ERPS/Ring Management

Redundant Ring, Fast Recovery for Critical Network Applications



3.8 Accessories - Optical Transceiver (SFP/SFP+/XFP/QSFP/CFP)

Supports EEPROM editing



3.9 Accessories- Power Supplies



48v 60W

SIL-MDR-60-48



48v 120W

SIL-MDR-120-48



48v 240W

SIL-MDR-240-48



48v 480W

SIL-MDR-480-48

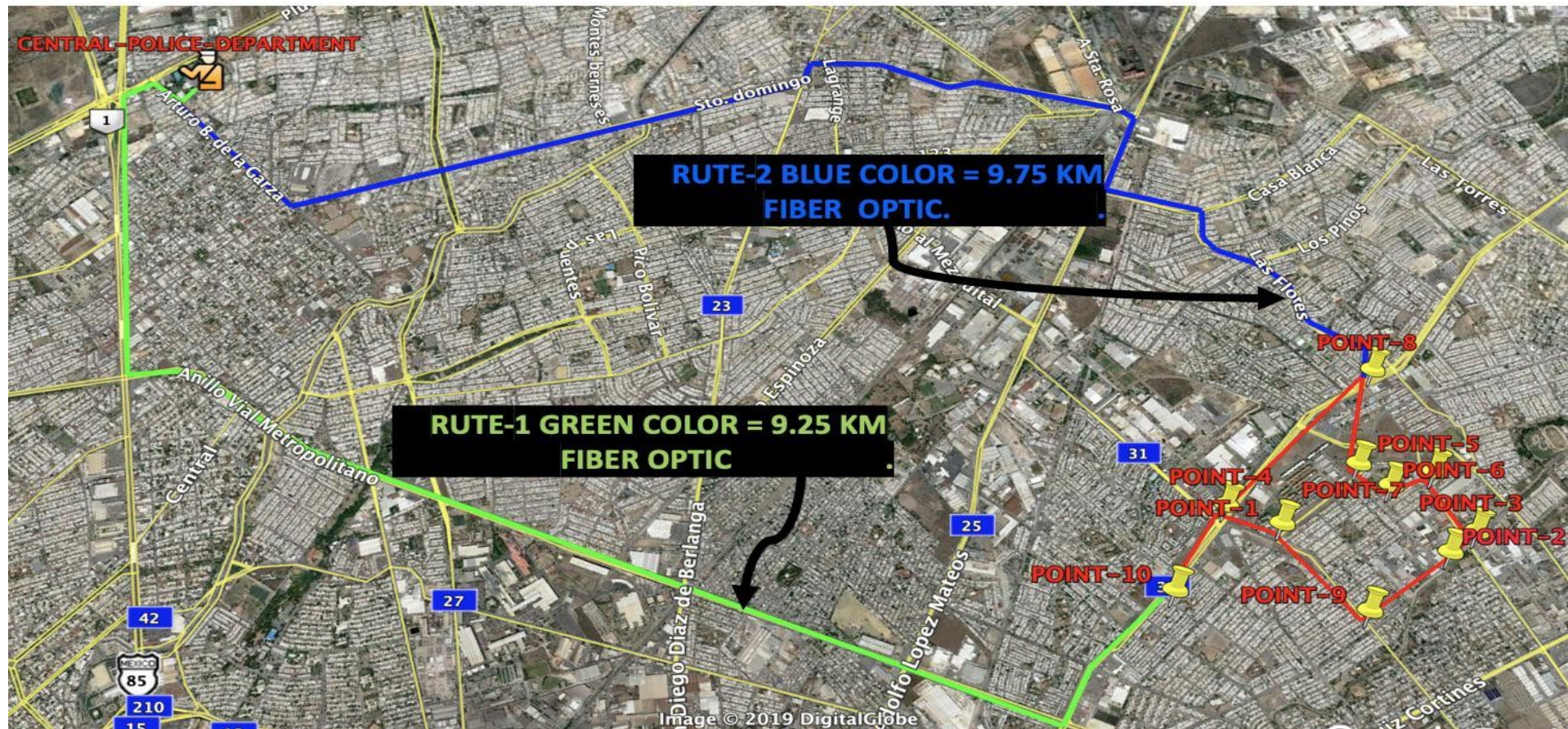
4 Why Choose SilverNet

- 
- **Over 15 Years of R&D Background** – Hardware and software are developed by SilverNet.
 - **Medium Size Enterprise with a Global Perspective** - Annual sales growth and increased customer retention.
 - **Success** - Many success stories and happy customers.
 - **New Product Releases every Year** - To cater for the latest market trends.
 - **Quality Control** - Perfect quality test and production line KPI assessment mechanism, repair rate 0.3-0.5%.
 - **Technical Support Team** - Help with training, network design and technical support.

4.1 Successful Switch Deployment

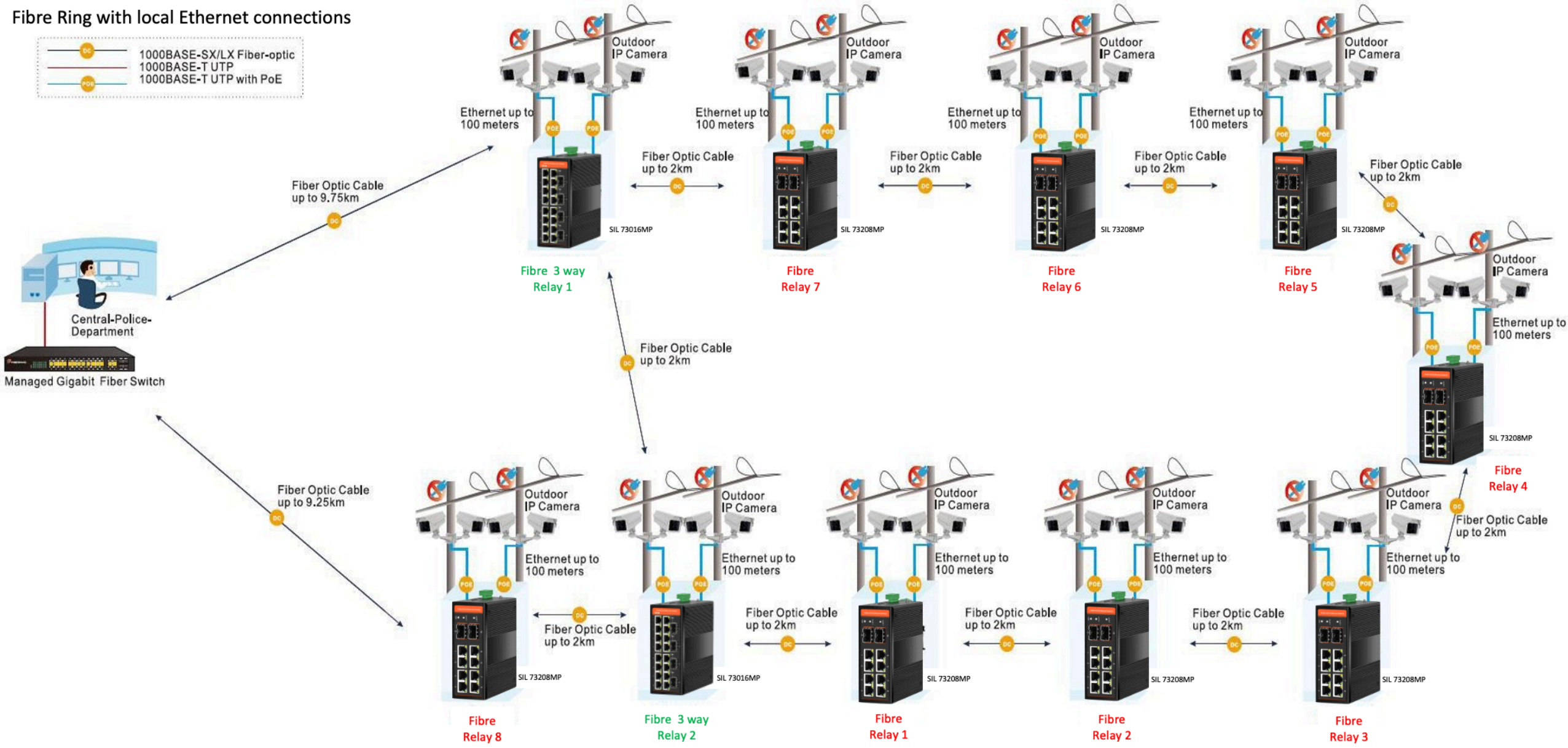
PROJECT TEST

TWO RINGS = GREEN RING / BLUE RING



4.1 Successful Switch Deployment

Fibre Ring with local Ethernet connections



4.2 Quality Control Assured



High and Low
Temperature Test



Data and Flow Test



Radiation Test



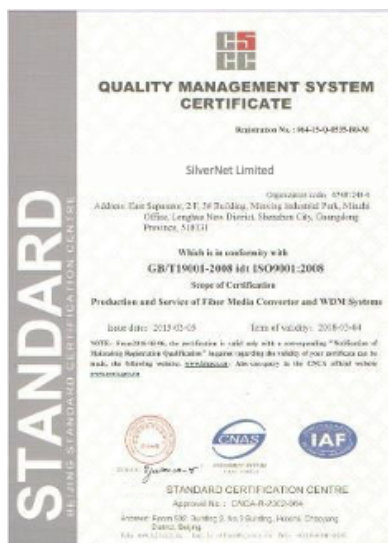
ESD Test



Immunity Test



Safety Test



ISO 9001
Quality Management



0.02%
Failure Rate



Industrial Chipset

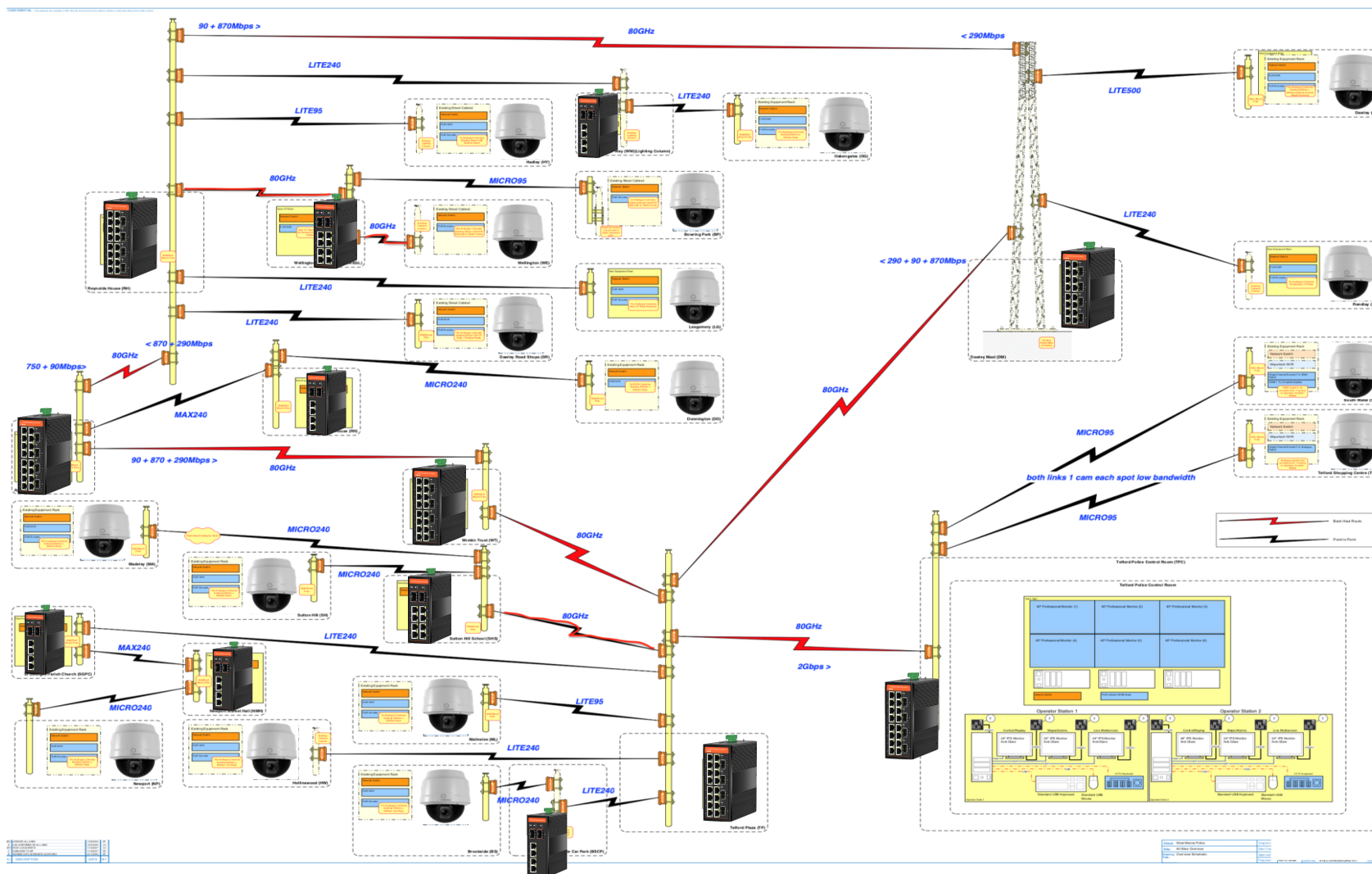


The 3rd Party
Laboratory Certification



4.3 System Integration - Wireless

Our switches can integrate into many different system scenarios including a mixture of large scale wireless and fibre deployments.



4.4 System Integration - NMS

SilverView Pro v6.2.1 Beta - Profile: test 1

File View Log Tools Filter: All Units Help

IP Address Name Type Version Mode SSID Channel Throughput Mbps Serial No UpTime Quality

192.168.0.100	RVX-IP30	ONVIF		Codec				bc3400031cf		
192.168.0.128	SIL 73204MP	Series 7 Switch	V1.0					50:11:EB:0E:70:BA	11 d 23 h 16 m 57.07 s	
192.168.0.129	SIL 73208MP	Series 7 Switch	V1.0					50:11:EB:0E:70:8F	12 d 0 h 24 m 8.22 s	
192.168.0.204	PICO95	PRO 95	v2.42.35	Sta WDS	SilverNetWireless-4321	5745	4.3870	50:11:EB:00:92:1B	9 d 2 h 41 m 22.13 s	
192.168.0.203	MICRO95	PRO 95	v2.42.35	AP WDS	SilverNetWireless-4321	5745	4.3628	50:11:EB:00:5D:0B	29 d 22 h 41 m 9.36 s	
192.168.0.202	LITE240	PRO 500	v2.42.33	Sta WDS	SilverNetWireless-1234	5785	4.3785	50:11:EB:00:6D:EB	25 d 23 h 0 m 23.48 s	
192.168.0.201	MAX500	PRO 500	v2.42.33	AP WDS	SilverNetWireless-1234	5785	3.8772	50:11:EB:00:6E:6B	29 d 22 h 41 m 44.11 s	

Street Scene butterfly Map Number 4 Map Number 5 +

Throughput

Test Settings

Test Type: tcp

Target IP Address: tcp

Multicast Address: udp

Parallel Streams: 6

Test Bandwidth: 1 Mbps

Time To Live: 1

Test Duration: 2 minutes

Show last: 2 minutes on Graph

Find Target

Start Test

Test Status

Test Complete.

Last Recorded Throughput: 91.554 Mbps

Seconds since test started: 120

Seconds with no throughput:

Your current IP Address: 192.168.0.69 Refresh Your IP Address

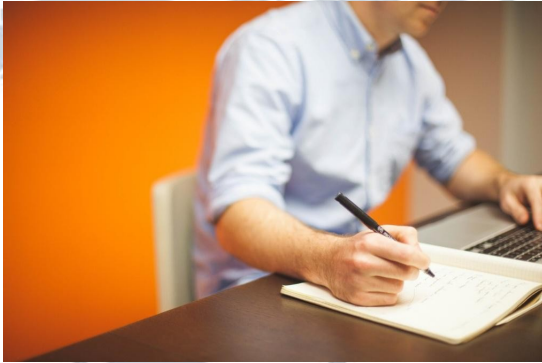
Real Time Monitoring

- See throughput
- Link Quality
- See your IP Address

Built in Data tester

- Throughput test your links
- Test Multiple Data streams
- Test TCP, UDP and Multicast modes

4.4 Long Term Partnerships



To Listen: How can we offer better services and products to support your business?

To Collaborate: How can we be YOUR FIRST CHOICE VENDOR in understanding your business needs?

To Share: Sharing SilverNet New Products Development, Service Plan, as well as our experiences to assist in creating improved synergies between our companies.



To be our Distributor

OR

To be our Agent

OR

To be our Sales Representative



SILVERNET

WIRELESS-NETWORK-SOLUTIONS



Contact Details

0800 652 1629



sales@silvernet.com



www.silvernet.com