

# ideapad 330S

## S L E E K   E F F I C I E N C Y

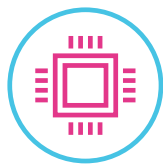
Meet the Lenovo™ IdeaPad™ 330S. Thinner & lighter with narrow bezels for broader viewing, it boasts state-of-the-art processing and accelerated graphics performance. Power through any task with ease.

### WHY YOU SHOULD BUY THE LENOVO IDEAPAD 330S



#### Simple, sleek and premium

Featuring a streamlined chassis with a polished aluminum cover, the Ideapad 330S is designed to make an impression. Choose from a range of sophisticated colors to make it yours.



#### Amp up your productivity

The latest generation of Intel® Core™ i7 processing offers up to a 40% improvement in performance<sup>1</sup>, with unprecedented gaming capabilities, theater-like entertainment, faster boot-ups and seamless multitasking.



Lenovo™



#### Life-like clarity

Featuring Dolby Audio™ and up to FHD resolution on a wide-angle display edged with razor-thin bezels, the IdeaPad 330S offers the dynamic experience of a portable home theater.



#### Smooth, efficient performance

Upgrade with a NVIDIA® GeForce® GTX 1050<sup>2</sup> discrete graphics card, powered by NVIDIA® Pascal™ with up to 3X the performance of previous generations. Also offering AMD Radeon™ 535 and 540.



<sup>1</sup> Software and workloads used in performance tests may have been optimized for performance only on Intel® microprocessors. Performance tests are measured using specific computer systems, components, software, operations and functions. Any change to any of those factors may cause the results to vary.

<sup>2</sup> 15" model only.



WWW.LENOVO.COM



# ideapad 330S

## SPECIFICATIONS

Lenovo IdeaPad 330S-14IKB\*, Lenovo IdeaPad 330S-15IKB\*

### PERFORMANCE

#### Processor

8<sup>th</sup> Generation Intel® Core™ i7 Processor  
7<sup>th</sup> Generation Intel® Core™ i7 Processor  
Intel® Pentium® Silver Processor

#### Operating System

Windows 10 Home or Windows 10 Pro

#### Graphics

Intel® Integrated  
AMD Radeon™ 535<sup>1</sup>  
AMD Radeon™ 540<sup>1</sup>  
NVIDIA® GeForce® GTX 1050<sup>2</sup>

#### Camera / Microphone

HD 720p with Array Microphones

#### Memory

4 GB/6 GB/8 GB/12 GB DDR4<sup>3</sup>  
16 GB Intel® Optane™<sup>4</sup>

#### Storage

128 GB/256 GB PCIe SSD or  
128 GB/256 GB SATA SSD or  
1 TB/2 TB SATA HDD or  
128 GB PCIe SSD + 1 TB SATA HDD

#### Audio

2 x 2W Speakers with Dolby Audio™

#### Battery<sup>6</sup>

Up to 7 Hours

**Rapid Charge:** Charge 15 min. for up to 2 hours use  
(Power-off mode; requires 65W power supply)

### DESIGN

#### Display

**330S-14IKB**  
14" HD (1366 x 768)  
14" FHD (1920 x 1080) IPS

**330S-15IKB**  
15.6" HD (1366 x 768)  
15.6" FHD (1920 x 1080) IPS

#### Dimensions (W x D x H)

**330S-14IKB**  
(mm) : 323.1 x 234.8 x 18.95  
(inches) : 12.72" x 9.24" x 0.75"

#### 330S-15IKB (Standard Model)

(mm) : 358.4 x 244.1 x 19.4  
(inches) : 14.11" x 9.61" x 0.76"

#### 330S-15IKB (NVIDIA® GTX 1050 Model)

(mm) : 358.4 x 244.1 x 20.9  
(inches) : 14.11" x 9.61" x 0.82"

#### Weight

**330S-14IKB:** Starting at 3.68 lbs (1.67 kg)  
**330S-15IKB:** Starting at 4.12 lbs (1.87 kg)

#### Additional Features

Backlit Keyboard<sup>5</sup>  
Numeric Keyboard<sup>2</sup>

#### Color Options

Platinum Gray  
Blizzard White  
Midnight Blue  
Rose Pink  
Iron Gray

### CONNECTIVITY

#### WLAN

1 x 1 WiFi 802.11 ac

#### Bluetooth®

Bluetooth® 4.1

#### Connectors

1 x USB 3.1 Type-C™  
2 x USB 3.0  
HDMI™ 2.0  
4-in-1 Card Reader  
Audio Jack

### PRELOADED SOFTWARE

- Lenovo App Explorer
- Lenovo Vantage
- Lenovo ID
- Lenovo Settings
- McAfee LiveSafe™ (30-day trial)
- Microsoft Office 365 (30-day trial)

<sup>1</sup> Not on Pentium® model.

<sup>2</sup> 15" model only.

<sup>3</sup> 12 GB DDR4 memory is only on 8<sup>th</sup> generation models.

<sup>4</sup> Optional and only on some configurations.

<sup>5</sup> Optional.

<sup>6</sup> All battery life claims are approximate and based on test results using the MobileMark® 2014 ver 1.5 battery life benchmark test. Actual results will vary, and depend on numerous factors including product configuration and usage, software, operating conditions, wireless functionality, power management settings, screen brightness and other factors. The maximum capacity of the battery will naturally decrease with time and usage. See <https://bapccom/products/mobilemark-2014/> for additional details.



## LENOVO SERVICES

#### Warranty Upgrades - On-site / In-Home Service

Maximizes PC uptime and productivity by providing convenient, fast repair services in your own home.

#### Accidental Damage Protection

Avoid the hassles of unexpected repair costs. Provides coverage for non-warranted damage incurred under normal operating conditions, such as minor spills, drops or damage to the integrated screen.

#### Warranty Extensions (1-to-3 Years Total Duration)

This fixed-term, fixed-cost service helps accurately budget for PC expenses, protect your valuable investment and potentially lower the cost of ownership over time.

\* Example of Lenovo IdeaPad catalogue naming convention



#### Intel® platform codes

Apollo Lake: IAP, Broadwell: IBD, Braswell: IBR, Broadwell: IBW, Baytrail: IBY, Cannonlake: ICN, Haswell: IHH, KabyLake: IKB, Skylake H: ISH, Skylake: ISK, Skylake U: ISU, Skylake Y: ISY, Skylake Z: ISZ

## OPTIONS & ACCESSORIES



Lenovo 500 Wireless Compact Precision Mouse



F310S USB 3.0 External Backup Hard Drive



Lenovo 15.6" Laptop Casual Backpack B210



WWW.LENOVO.COM

Lenovo reserves the right to alter product offerings and specifications at any time, without notice. Lenovo makes every effort to ensure accuracy of all information but is not liable or responsible for any editorial, photographic or typographic errors. All images are for illustration purposes only. For full Lenovo product, service and warranty specifications visit [www.lenovo.com](http://www.lenovo.com). Lenovo makes no representations or warranties regarding third party products or services. **Trademarks:** The following are trademarks or registered trademarks of Lenovo: Lenovo, the Lenovo logo, ideapad, IdeaCentre, yoga and yoga home. Microsoft, Windows and Vista are registered trademarks of Microsoft Corporation. Ultrabook, Celeron, Celeron Inside, Core Inside, Intel, Intel Logo, Intel Atom, Intel Atom Inside, Intel Core, Intel Core Inside, Intel Inside, Intel Inside Logo, Intel vPro, Itanium, Itanium Inside, Pentium, Pentium Inside, vPro Inside, Xeon, Xeon Phi, and Xeon Inside are trademarks of Intel Corporation in the U.S. and/or other countries. Other company, product and service names may be trademarks or service marks of others. Visit [www.lenovo.com/lenovo/us/en/safecomp/](http://www.lenovo.com/lenovo/us/en/safecomp/) periodically for the latest information on safe and effective computing. ©2018 Lenovo. All rights reserved.



Lenovo™