



Philips Brilliance  
LCD monitor with USB-C  
Dock

**P Line**

32 (31.5"/80 cm diag.)  
2560 x 1440 (QHD)

**Brilliance**

**326P1H**

## Master every task in a crisp view

The Philips USB-C docking display for a comprehensive solution. View QHD and recharge a laptop up to 90 W, all at the same time with a single USB-C cable. Pop-up webcam with Windows Hello and daisy-chaining deliver performance and convenience

### Single cable USB-C connection

- USB-C enables laptop power charging directly from a monitor
- Built-in RJ-45 Ethernet gives data security

### Designed for the way you work

- Crystal clear images with Quad HD 2560 x 1440 pixels
- IPS technology for full colours and wide viewing angles
- Securely sign in with pop-up webcam with Windows Hello™
- DisplayPort-out for connecting additional displays
- Less eye fatigue with Flicker-Free technology
- LowBlue Mode for easy-on-the-eyes productivity
- TUV Eye Comfort certified to reduce eye fatigue
- EasyRead mode for a paper-like reading experience

### Sustainable Eco-design

- PowerSensor saves up to 80% energy costs
- LightSensor for the perfect brightness with minimal power



**PHILIPS**

LCD monitor with USB-C Dock  
P Line 32 (31.5"/80 cm diag.), 2560 x 1440 (QHD)

326P1H/01

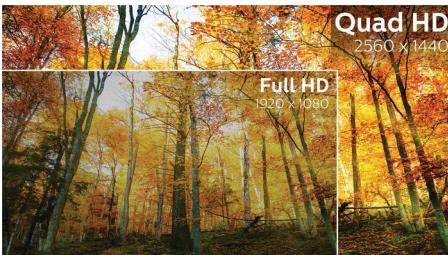
# Highlights

## USB Type-C connection



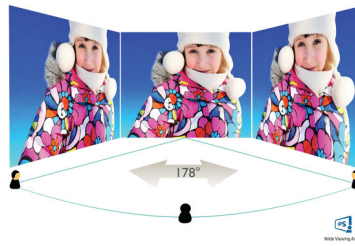
This Philips display features a built-in USB type-C docking station with power delivery. With intelligent and flexible power management, you can power charge your compatible\* laptop directly. Its slim, reversible USB-C connector allows for easy, one-cable docking. Simplify by connecting all your peripherals like keyboard, mouse and your RJ-45 Ethernet cable to the monitor's docking station. You can watch high-resolution video and transfer data at super-speed, while powering up and re-charging your notebook at the same time.

## CrystalClear images



These Philips screens deliver Crystal Clear, Quad HD 2560 x 1440 or 2560 x 1080 pixel images. Utilising high-performance panels with high-density pixel count, enabled by high-bandwidth sources like Displayport, HDMI and Dual link DVI, these new displays will make your images and graphics come alive. Whether you are a demanding professional requiring extremely detailed information for CAD-CAM solutions, a user of 3D graphic applications or a financial wizard working on huge spreadsheets, Philips displays will give you Crystal Clear images.

## IPS technology



IPS displays use advanced technology that gives you extra-wide viewing angles of 178/178 degrees, making it possible to view the display from almost any angle — even in 90-degree Pivot mode! Unlike standard TN panels, IPS displays gives you remarkably crisp images with vivid colours, making it ideal not only for Photos, films and web browsing, but also for professional applications that demand colour accuracy and consistent brightness at all times.

## Windows Hello™ pop-up webcam



Philips' innovative and secure webcam pops up when you need it and securely tucks back into the monitor when you are not using it. The webcam is also equipped with advanced sensors for Windows Hello™ facial recognition, which conveniently logs you into your Windows devices in less than 2 seconds, 3 times faster than a password.

## DisplayPort-out

With DisplayPort-out you can connect multiple high-resolution displays with just one cable from your first display to the PC. The ability to daisy chain multiple displays enables

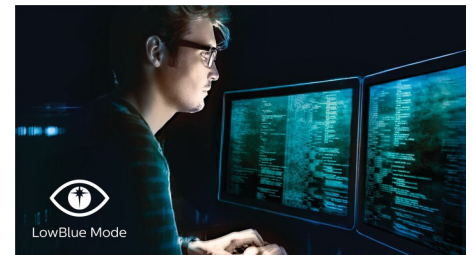
you to maintain a clean desktop without the hassle of too many wires.

## Flicker-Free technology



Due to the way brightness is controlled on LED-backlit screens, some users experience flicker on their screen which causes eye fatigue. Philips Flicker-Free technology applies a new solution to regulate brightness and reduce flicker for more comfortable viewing.

## LowBlue Mode



Studies have shown that just as ultra-violet rays can cause eye damage, shortwave-length blue light rays from LED displays can cause eye damage and affect vision over time. Developed for wellbeing, the Philips LowBlue Mode setting uses a smart software technology to reduce harmful shortwave blue light.

## TUV Rheinland Eye Comfort

Philips displays meet TUV Rheinland Eye Comfort standard to prevent eye strain caused by prolonged computer use. With TUV Eye Comfort certification, Philips displays ensure flicker-free, low-blue mode, no disturbing reflections, a wide viewing angle, less reduction of image quality from different angles and ergonomic stand designs for an ideal viewing experience. Keep your eyes healthy and boost work productivity.



USB-C Docking

Quad HD

Wide Viewing Angle

Windows Hello

Flicker-free

LowBlue Mode

EasyRead

PowerSensor

LightSensor

# Specifications

## Picture/Display

- LCD panel type: IPS technology
- Backlight type: W-LED system
- Panel Size: 31.5 inch/80 cm
- Display Screen Coating: Anti-Glare, 3H, Haze 25%
- Effective viewing area: 698.112 (H) x 392.688 (V)
- Aspect ratio: 16:9
- Maximum resolution: 2560 x 1440 @ 75 Hz\*
- Pixel Density: 93 PPI
- Response time (typical): 4 ms (Grey to Grey)\*
- Brightness: 350 cd/m<sup>2</sup>
- Contrast ratio (typical): 1000:1
- SmartContrast: 50,000,000:1
- Pixel pitch: 0.2727 x 0.2727 mm
- Viewing angle: 178° (H)/178° (V), @ C/R > 10
- Picture enhancement: SmartImage
- Display colours: Colour support 1.07 billion colours
- Colour gamut (typical): NTSC 106%\*, sRGB 118%\*, Adobe RGB 87%\*
- Scanning Frequency: 30–114 kHz (H)/48–75 Hz (V)
- SmartUniformity: 93 ~ 105%
- Delta E: < 2 (sRGB)
- sRGB
- Flicker-free
- LowBlue Mode
- EasyRead
- Adaptive sync

## Connectivity

- Signal Input: DisplayPort 1.4 x 1, HDMI 1.4 x 2, USB-C 3.2 Gen 1 x 1 (upstream, power delivery up to 90 W)
- HDCP: HDCP 2.2 (HDMI/DP/USB-C)
- HBR3: for USB-C
- Signal Output: DisplayPort out x 1
- USB: USB-C x 1 (upstream), USB 3.2 x 4 (downstream with 1 fast charge B.C 1.2)
- Audio (In/Out): Audio out
- RJ45: Ethernet LAN up to 1 G\*, Wake on LAN
- Sync Input: Separate Sync

## USB

- USB-C: Reversible plug connector
- Super speed: Data and Video transfer
- DP: Built-in Display Port Alt mode
- Power delivery: USB PD version 3.0
- USB-C max. power delivery: Up to 90 W (5 V/3 A, 7 V/3 A, 9 V/3 A, 10 V/3 A, 12 V/3 A, 15 V/3 A, 20 V/4.5 A)

## Convenience

- Built-in Speakers: 5 W x 2
- Built-in webcam: 2.0 megapixel FHD camera with microphone and LED indicator (for Windows 10 Hello)
- User convenience: SmartImage, Input, User, Menu, Power On/Off
- Control software: SmartControl
- OSD Languages: Brazil Portuguese, Czech, Dutch, English, French, Finnish, German, Greek, Hungarian, Italian, Japanese, Korean, Portuguese,

- Polish, Russian, Simplified Chinese, Spanish, Swedish, Traditional Chinese, Turkish, Ukrainian
- Other convenience: Kensington lock, VESA mount (100 x 100 mm)
- Plug and Play Compatibility: DDC/CI, Mac OS X, sRGB, Windows 10 / 8.1 / 8 / 7

## Stand

- Height adjustment: 180 mm
- Pivot: +/- 90 degree
- Swivel: +/- 180 degree
- Tilt: -5~25 degree

## Power

- ECO mode: 24 W (typ.)
- On mode: 25.3 W (typ.) (EnergyStar test method)
- Standby mode: 0.3 W
- Off mode: Zero watts with Zero switch
- Energy Label Class: G
- Power LED indicator: Operation - White, Standby mode - White (flashing)
- Power supply: Built-in, 100–240 VAC, 50–60 Hz

## Dimensions

- Product with stand (max height): 714 x 649 x 280 mm
- Product without stand (mm): 714 x 422 x 62 mm
- Packaging in mm (W x H x D): 930 x 563 x 186 mm

## Weight

- Product with stand (kg): 12.22 kg
- Product without stand (kg): 8.21 kg
- Product with packaging (kg): 15.53 kg

## Operating conditions

- Temperature range (operation): 0°C to 40°C °C
- Temperature range (storage): -20°C to 60°C °C
- Relative humidity: 20%-80 %
- Altitude: Operation: +12,000 ft (3658 m), Non-operation: +40,000 ft (12,192 m)
- MTBF (demonstrated): 70,000 hrs (excluded backlight)

## Sustainability

- Environmental and energy: PowerSensor, LightSensor, EnergyStar 8.0, EPEAT\*, TCO Certified Edge, RoHS
- Recyclable packaging material: 100 %
- Post-consumer recycled plastic: 85%
- Specific Substances: Mercury free, PVC/BFR free housing

## Compliance and standards

- Regulatory Approvals: EPA, CB, TUV/GS, TUV Ergo, SEMKO, CU-EAC, EAEU RoHS, CCC, CEL, CECP, CE Mark, FCC Class B, ICES-003, TUV Eye Comfort certified

## Cabinet

- Front bezel: Black
- Rear cover: Black
- Foot: Black
- Finish: Texture

## What's in the box?

- Monitor with stand
- Cables: HDMI cable, DP cable, USB-C to C/A Y cable, Power cable
- User Documentation



Issue date 2021-05-26

Version: 2.0.1

12 NC: 8670 001 67991  
EAN: 87 12581 76810 2

© 2021 Koninklijke Philips N.V.  
All Rights reserved.

Specifications are subject to change without notice.  
Trademarks are the property of Koninklijke Philips N.V.  
or their respective owners.

[www.philips.com](http://www.philips.com)

- \* "IPS" word mark / trademark and related patents on technologies belong to their respective owners.
- \* The maximum resolution works for either HDMI, DP or USB-C input.
- \* Response time value equal to SmartResponse
- \* NTSC Area based on CIE 1976
- \* sRGB Area based on CIE1931
- \* Adobe RGB Coverage based on CIE 1976
- \* Activities such as screen sharing and online streaming over the Internet can impact your network performance. Your hardware and network bandwidth will determine the overall audio and video quality.
- \* For Video transmission via USB-C, your Notebook/device must support USB-C DP Alt mode
- \* For USB-C power and charging function, your Notebook/device must support USB-C standard Power Delivery specifications. Please check with your Notebook user manual or manufacturer for more details.
- \* DisplayPort out works only under either DP in or USB-C in.
- \* Mac OS does not support DP-Out MST extension function.
- \* If your Ethernet connection seems slow, please enter the OSD menu and select USB 3.0 or a higher version that can support the LAN speed up to 1G.
- \* EPEAT rating is valid only where Philips registers the product. Please visit <https://www.epeat.net/> for registration status in your country.
- \* The monitor may look different from feature images.