

OptiPlex 7080 Small Form Factor

Service Manual



Notes, cautions, and warnings

 **NOTE:** A NOTE indicates important information that helps you make better use of your product.

 **CAUTION:** A CAUTION indicates either potential damage to hardware or loss of data and tells you how to avoid the problem.

 **WARNING:** A WARNING indicates a potential for property damage, personal injury, or death.

Chapter 1: Working on your computer.....	5
Safety instructions.....	5
Before working inside your computer.....	5
Safety precautions.....	6
Electrostatic discharge—ESD protection.....	6
ESD field service kit	7
After working inside your computer.....	7
Chapter 2: Technology and components.....	9
Graphics options.....	9
Intel UHD 630 Graphics.....	9
NVIDIA GeForce GT 730.....	9
AMD Radeon RX 640.....	10
AMD Radeon R5 430.....	11
NVIDIA GeForce RTX 1660 SUPER.....	12
NVIDIA GeForce RTX 2070 SUPER.....	12
System management features.....	13
Dell Client Command Suite for In-Band systems management	13
Chapter 3: Field service information.....	15
Side cover.....	15
Removing the side cover.....	15
Installing the side cover.....	18
Intrusion switch.....	20
Removing the intrusion switch.....	20
Installing the intrusion switch.....	20
Front bezel.....	21
Removing the front bezel.....	21
Installing the front bezel.....	22
Hard-drive assembly.....	23
Removing the 2.5 in. hard-drive assembly.....	23
Removing the hard drive bracket.....	24
Installing the 2.5 in. hard-drive assembly.....	25
Installing the hard-drive bracket.....	26
Solid-state drive.....	27
Removing the M.2 2230 PCIe solid-state drive.....	27
Installing the M.2 2230 PCIe solid-state drive.....	28
Removing the M.2 2280 PCIe solid-state drive.....	29
Installing the M.2 2280 PCIe solid-state drive.....	30
Optical drive.....	32
Removing the slim optical-drive.....	32
Installing the slim optical-drive.....	33
WLAN card.....	34
Removing the WLAN card.....	34

Installing the WLAN card.....	35
Heat sink.....	36
Removing the fan assembly.....	36
Installing the fan assembly.....	37
Coin-cell battery.....	39
Removing the coin-cell battery.....	39
Installing the coin-cell battery.....	39
Expansion card.....	40
Removing the graphics card.....	40
Installing the graphics card.....	41
Memory modules.....	42
Removing the memory modules.....	42
Installing the memory modules.....	43
Processor.....	44
Removing the processor.....	44
Installing the processor.....	45
Power-supply unit.....	47
Removing the power-supply unit.....	47
Installing the power-supply unit.....	49
System board.....	53
Removing the system board.....	53
Installing the system board.....	56
Chapter 4: Troubleshooting.....	61
Dell SupportAssist Pre-boot System Performance Check diagnostics.....	61
Running the SupportAssist Pre-Boot System Performance Check.....	61
Diagnostic LED behavior.....	62
Diagnostic error messages.....	63
System error messages.....	66
WiFi power cycle.....	66
Chapter 5: Getting help.....	67
Contacting Dell.....	67


Working on your computer


Topics:


- [Safety instructions](#)


Safety instructions


Use the following safety guidelines to protect your computer from potential damage and to ensure your personal safety. Unless otherwise noted, each procedure included in this document assumes that you have read the safety information that shipped with your computer.


 **WARNING:** Before working inside your computer, read the safety information that is shipped with your computer. For more safety best practices, see the Regulatory Compliance home page at www.dell.com/regulatory_compliance.


 **WARNING:** Disconnect your computer from all power sources before opening the computer cover or panels. After you finish working inside the computer, replace all covers, panels, and screws before connecting your computer to an electrical outlet.

 **CAUTION:** To avoid damaging the computer, ensure that the work surface is flat, dry and clean.

 **CAUTION:** To avoid damaging the components and cards, handle them by their edges, and avoid touching the pins and the contacts.

 **CAUTION:** You should only perform troubleshooting and repairs as authorized or directed by the Dell technical assistance team. Damage due to servicing that is not authorized by Dell is not covered by your warranty. See the safety instructions that is shipped with the product or at www.dell.com/regulatory_compliance.

 **CAUTION:** Before touching anything inside your computer, ground yourself by touching an unpainted metal surface, such as the metal at the back of the computer. While you work, periodically touch an unpainted metal surface to dissipate static electricity which could harm internal components.

 **CAUTION:** When you disconnect a cable, pull it by its connector or its pull tab, not the cable itself. Some cables have connectors with locking tabs or thumb-screws that you must disengage before disconnecting the cable. When disconnecting cables, keep them evenly-aligned to avoid bending the connector pins. When connecting cables, ensure that the ports and the connectors are correctly oriented and aligned.

 **CAUTION:** Press and eject any installed card from the media-card reader.


 **NOTE:** The color of your computer and certain components may appear differently than shown in this document.


Before working inside your computer

About this task

 **NOTE:** The images in this document may differ from your computer depending on the configuration you ordered.

Steps

1. Save and close all open files and exit all open applications.
2. Shut down your computer. Click **Start** >  **Power** > **Shut down**.

 **NOTE:** If you are using a different operating system, see the documentation of your operating system for shut-down instructions.

3. Disconnect your computer and all attached devices from their electrical outlets.
4. Disconnect all attached network devices and peripherals, such as keyboard, mouse, and monitor from your computer.



CAUTION: To disconnect a network cable, first unplug the cable from your computer and then unplug the cable from the network device.

5. Remove any media card and optical disc from your computer, if applicable.

Safety precautions

The safety precautions chapter details the primary steps to be taken before performing any disassembly instructions.

Observe the following safety precautions before you perform any installation or break/fix procedures involving disassembly or reassembly:

- Turn off the system and all attached peripherals.
- Disconnect the system and all attached peripherals from AC power.
- Disconnect all network cables, telephone, and telecommunications lines from the system.
- Use an ESD field service kit when working inside any tablet/notebook/desktop to avoid electrostatic discharge (ESD) damage.
- After removing any system component, carefully place the removed component on an anti-static mat.
- Wear shoes with non-conductive rubber soles to reduce the chance of getting electrocuted.

Standby power

Dell products with standby power must be unplugged before you open the case. Systems that incorporate standby power are essentially powered while turned off. The internal power enables the system to be remotely turned on (wake on LAN) and suspended into a sleep mode and has other advanced power management features.

Unplugging, pressing and holding the power button for 15 seconds should discharge residual power in the system board. Remove the battery from tablets/notebooks.

Bonding

Bonding is a method for connecting two or more grounding conductors to the same electrical potential. This is done through the use of a field service electrostatic discharge (ESD) kit. When connecting a bonding wire, ensure that it is connected to bare metal and never to a painted or non-metal surface. The wrist strap should be secure and in full contact with your skin, and ensure that you remove all jewelry such as watches, bracelets, or rings prior to bonding yourself and the equipment.

Electrostatic discharge—ESD protection

ESD is a major concern when you handle electronic components, especially sensitive components such as expansion cards, processors, memory DIMMs, and system boards. Very slight charges can damage circuits in ways that may not be obvious, such as intermittent problems or a shortened product life span. As the industry pushes for lower power requirements and increased density, ESD protection is an increasing concern.

Due to the increased density of semiconductors used in recent Dell products, the sensitivity to static damage is now higher than in previous Dell products. For this reason, some previously approved methods of handling parts are no longer applicable.

Two recognized types of ESD damage are catastrophic and intermittent failures.

- **Catastrophic** – Catastrophic failures represent approximately 20 percent of ESD-related failures. The damage causes an immediate and complete loss of device functionality. An example of catastrophic failure is a memory DIMM that has received a static shock and immediately generates a "No POST/No Video" symptom with a beep code emitted for missing or nonfunctional memory.
- **Intermittent** – Intermittent failures represent approximately 80 percent of ESD-related failures. The high rate of intermittent failures means that most of the time when damage occurs, it is not immediately recognizable. The DIMM receives a static shock, but the tracing is merely weakened and does not immediately produce outward symptoms related to the damage. The weakened trace may take weeks or months to melt, and in the meantime may cause degradation of memory integrity, intermittent memory errors, etc.

The more difficult type of damage to recognize and troubleshoot is the intermittent (also called latent or "walking wounded") failure.

Perform the following steps to prevent ESD damage:

- Use a wired ESD wrist strap that is properly grounded. The use of wireless anti-static straps is no longer allowed; they do not provide adequate protection. Touching the chassis before handling parts does not ensure adequate ESD protection on parts with increased sensitivity to ESD damage.
- Handle all static-sensitive components in a static-safe area. If possible, use anti-static floor pads and workbench pads.

- When unpacking a static-sensitive component from its shipping carton, do not remove the component from the anti-static packing material until you are ready to install the component. Before unwrapping the anti-static packaging, ensure that you discharge static electricity from your body.
- Before transporting a static-sensitive component, place it in an anti-static container or packaging.

ESD field service kit

The unmonitored Field Service kit is the most commonly used service kit. Each Field Service kit includes three main components: anti-static mat, wrist strap, and bonding wire.

Components of an ESD field service kit

The components of an ESD field service kit are:

- **Anti-Static Mat** – The anti-static mat is dissipative and parts can be placed on it during service procedures. When using an anti-static mat, your wrist strap should be snug and the bonding wire should be connected to the mat and to any bare metal on the system being worked on. Once deployed properly, service parts can be removed from the ESD bag and placed directly on the mat. ESD-sensitive items are safe in your hand, on the ESD mat, in the system, or inside a bag.
- **Wrist Strap and Bonding Wire** – The wrist strap and bonding wire can be either directly connected between your wrist and bare metal on the hardware if the ESD mat is not required, or connected to the anti-static mat to protect hardware that is temporarily placed on the mat. The physical connection of the wrist strap and bonding wire between your skin, the ESD mat, and the hardware is known as bonding. Use only Field Service kits with a wrist strap, mat, and bonding wire. Never use wireless wrist straps. Always be aware that the internal wires of a wrist strap are prone to damage from normal wear and tear, and must be checked regularly with a wrist strap tester in order to avoid accidental ESD hardware damage. It is recommended to test the wrist strap and bonding wire at least once per week.
- **ESD Wrist Strap Tester** – The wires inside of an ESD strap are prone to damage over time. When using an unmonitored kit, it is a best practice to regularly test the strap prior to each service call, and at a minimum, test once per week. A wrist strap tester is the best method for doing this test. If you do not have your own wrist strap tester, check with your regional office to find out if they have one. To perform the test, plug the wrist-strap's bonding-wire into the tester while it is strapped to your wrist and push the button to test. A green LED is lit if the test is successful; a red LED is lit and an alarm sounds if the test fails.
- **Insulator Elements** – It is critical to keep ESD sensitive devices, such as plastic heat sink casings, away from internal parts that are insulators and often highly charged.
- **Working Environment** – Before deploying the ESD Field Service kit, assess the situation at the customer location. For example, deploying the kit for a server environment is different than for a desktop or portable environment. Servers are typically installed in a rack within a data center; desktops or portables are typically placed on office desks or cubicles. Always look for a large open flat work area that is free of clutter and large enough to deploy the ESD kit with additional space to accommodate the type of system that is being repaired. The workspace should also be free of insulators that can cause an ESD event. On the work area, insulators such as Styrofoam and other plastics should always be moved at least 12 inches or 30 centimeters away from sensitive parts before physically handling any hardware components.
- **ESD Packaging** – All ESD-sensitive devices must be shipped and received in static-safe packaging. Metal, static-shielded bags are preferred. However, you should always return the damaged part using the same ESD bag and packaging that the new part arrived in. The ESD bag should be folded over and taped shut and all the same foam packing material should be used in the original box that the new part arrived in. ESD-sensitive devices should be removed from packaging only at an ESD-protected work surface, and parts should never be placed on top of the ESD bag because only the inside of the bag is shielded. Always place parts in your hand, on the ESD mat, in the system, or inside an anti-static bag.
- **Transporting Sensitive Components** – When transporting ESD sensitive components such as replacement parts or parts to be returned to Dell, it is critical to place these parts in anti-static bags for safe transport.

ESD protection summary

It is recommended that all field service technicians use the traditional wired ESD grounding wrist strap and protective anti-static mat at all times when servicing Dell products. In addition, it is critical that technicians keep sensitive parts separate from all insulator parts while performing service and that they use anti-static bags for transporting sensitive components.

After working inside your computer

About this task

 **CAUTION:** Leaving stray or loose screws inside your computer may severely damage your computer.

Steps

1. Replace all screws and ensure that no stray screws remain inside your computer.
2. Connect any external devices, peripherals, or cables you removed before working on your computer.
3. Replace any media cards, discs, or any other parts that you removed before working on your computer.
4. Connect your computer and all attached devices to their electrical outlets.
5. Turn on your computer.

Technology and components

This chapter details the technology and components available in the system.

Topics:

- [Graphics options](#)
- [System management features](#)

Graphics options

Intel UHD 630 Graphics

Table 1. Intel UHD 630 Graphics specifications

Intel UHD 630 Graphics	
Bus Type	Integrated
Memory Type	UMA
Graphics Level	i3/i5: GT2 (UHD) i3/i5/i7: GT2 (UHD)
Overlay Planes	Yes
Operating Systems Graphics/ Video API Support	DirectX 12, OpenGL (4.5 from Intel CML POR)
Supports maximum resolution	<ul style="list-style-type: none"> • DP: 4096 x 2304 @60 Hz, 24 bpp • Option DP: 4096 x 2304 @60 Hz • Option USB type-C Alt mode: 4096 x 2304 @60 Hz • Option VGA: 1920 x 1200 @60 Hz • Option HDMI2.0: 4096 x 2160 @60 Hz
Number of display supported	Up to three displays supported
Multiple Display Support	<ul style="list-style-type: none"> • Two motherboard integrated DP1.4 HBR2 + One video option (VGA/DP1.4 HBR2/HDMI2.0/USB3.2 Gen2 type-C Alt-mode)
External Connectors	Two MB integrated DP1.4 HBR2 + One video option (VGA/DP1.4 HBR2/HDMI2.0/USB3.2 Gen2 type-C Alt-mode)

NVIDIA GeForce GT 730

Table 2. NVIDIA GeForce GT 730 specifications

Feature	Values
GPU frequency	902 MHz
DirectX	12.0
Shader model	5.0

Table 2. NVIDIA GeForce GT 730 specifications (continued)

Feature	Values
Open CL	1.1
Open GL	4.5
GPU memory interface	64 bit
PCIe bus	PCIe 3.0 x8
Display support	One DisplayPort 1.2
Graphics memory configuration	2 GB, GDDR5
Graphics memory clock speed	2.5 GHz
Active fan sink	2-pin excluded fan controller
Slot number	Single slot
PCB form factor	Low profile
PCB layer	4 layer
PCB solder mask	Green
Bracket form factor	Low profile
Maximum resolution	3840 x 2160
Power consumption	u · 20 W TDP 30 W TGP
3D mark performance	· 3DMark 11 (P): E4131 · 3Dmark Vantage(P):

AMD Radeon RX 640

Table 3. AMD Radeon RX 640 specifications

Feature	Values
GPU frequency	1.2 GHz
DirectX	12
Shader model	5.0
Open CL	2.0
Open GL	4.5
GPU memory interface	128 bit
PCIe bus	PCIe 3.0 x8

Table 3. AMD Radeon RX 640 specifications (continued)

Feature	Values
Display support	<ul style="list-style-type: none">Two Mini DisplayPortsOne DisplayPort
Graphics memory configuration	4 GB, GDDR5
Graphics memory clock speed	7 Gbps
Active fan sink	4-pin embedded fan controller
Slot number	Single slot
PCB form factor	Low profile
PCB layer	6 layer
PCB solder mask	Green
Bracket form factor	Low profile
Maximum resolution	5120 x 2880
Power consumption	50 W
3D mark performance	3DMark 11 (P): 5315

AMD Radeon R5 430

Table 4. AMD Radeon R5 430 specifications

Feature	Values
GPU frequency	780 MHz
DirectX	11.2
Shader model	5.0
Open CL	1.2
Open GL	4.2
GPU memory interface	64 bit
PCIe bus	PCIe 3.0 x8
Display support	Two DisplayPorts
Graphics memory configuration	2 GB, GDDR5
Graphics memory clock speed	1.5 GHz
Active fan sink	2-pin excluded fan controller
Slot number	Single slot
PCB form factor	Low profile

Table 4. AMD Radeon R5 430 specifications (continued)

Feature	Values
PCB layer	6 layer
PCB solder mask	Green
Bracket form factor	<ul style="list-style-type: none">· Full height· Low profile
Maximum resolution	4096 x 2160
Power consumption	<ul style="list-style-type: none">· 25 W TDP· 35 W TGP
3D mark performance	<ul style="list-style-type: none">· 3DMark 11 (P)· 3Dmark Vantage(P)

NVIDIA GeForce RTX 1660 SUPER

Table 5. NVIDIA GeForce RTX 1660 SUPER specifications

Feature	Values
Graphics memory configuration	6 GB GDDR6
Bus type	PCIe Gen 3 x16
Memory interface width	192-bit
Memory speed	14 Gbps
Clock speeds	1785 MHz
Display support	<ul style="list-style-type: none">· 1 x DP 1.4· 1 x HDMI 2.0b· 1 x DVI Dual link
Maximum color depth	12
Estimated maximum power	125 W
Power connectors	6 pin
Maximum digital resolution	7680 x 4320
Numbers of display support	3
Number of 4K resolution support	2
Number of 8K resolution support	1

NVIDIA GeForce RTX 2070 SUPER

Table 6. NVIDIA GeForce RTX 2070 SUPER specifications

Feature	Values
Graphics memory configuration	8 GB GDDR6
Bus type	PCIe Gen 3 x16
Memory interface width	256-bit

Table 6. NVIDIA GeForce RTX 2070 SUPER specifications (continued)

Feature	Values
Memory speed	14 Gbps
Clock speeds	1770 MHz
Display support	<ul style="list-style-type: none">• 3 x DP 1.4• 1 x HDMI 2.0b
Maximum color depth	12
Estimated maximum power	215 W
Power connectors	6 pin + 8 pin
Maximum digital resolution	7680 x 4320
Numbers of display support	4
Number of 4K resolution support	4
Number of 8K resolution support	1

System management features

Dell commercial systems come with a number of systems management options that are included by default for In-Band management with the Dell Client Command Suite. In-Band management is when the system has a functional operating system and the device is connected to a network so that it can be managed. The Dell Client Command Suite of tools can be leveraged individually or with a systems management console like SCCM, LANDESK, KACE, etc.

We also offer Out-of-Band management as an option. Out-of-band management is when the system does not have a functional operating system or is turned off and you still want to be able to manage the system in that state.

Dell Client Command Suite for In-Band systems management

Dell Client Command Suite is a free toolkit available for download, for all Latitude Rugged tablets at dell.com/support, automates and streamlines systems management tasks, saving time, money, and resources. It consists of the following modules that can be used independently, or with a variety of systems management consoles such as SCCM.

Dell Client Command Suite's integration with VMware Workspace ONE Powered by AirWatch, now allows customers to manage their Dell client hardware from the cloud, using a single Workspace ONE console.

Dell Command | Deploy enables easy operating system (OS) deployment across all major OS deployment methodologies and provides numerous system-specific drivers that have been extracted and reduced to an OS-consumable state.

Dell Command | Configure is a graphical user interface (GUI) admin tool for configuring and deploying hardware settings in a pre-OS or post-OS environment, and it operates seamlessly with SCCM and Airwatch and can be self-integrated into LANDesk and KACE. Simply, this is all about the BIOS. Command | Configure allows you to remotely automate and configure over 150+ BIOS settings for a personalized user experience.

Dell Command | PowerShell Provider can do the same things as Command | Configure, but with a different method. PowerShell is a scripting language that allows customers to create a customized and dynamic configuration process.

Dell Command | Monitor is a Windows Management Instrumentation (WMI) agent that provides IT admins with an extensive inventory of the hardware and health-state data. Admins can also configure hardware remotely by using command line and scripting.

Dell Command | Power Manager (end-user tool) is a GUI-based factory-installed battery management tool that allows end users to choose the battery management methods that meet their personal preferences or work schedule without sacrificing IT's capability to control those settings with Group Policy.

Dell Command | Update (end-user tool) is factory-installed and allows admins to individually manage and automatically present and install Dell updates to the BIOS, drivers, and software. Command | Update eliminates the time-consuming hunting and pecking process of update installation.

Dell Command | Update Catalog provides searchable metadata that allows the management console to retrieve the latest system-specific updates (driver, firmware or BIOS). The updates are then delivered seamlessly to end-users using the customer's systems management infrastructure that is consuming the catalog (like SCCM).

Dell Command | vPro Out of Band console extends hardware management to systems that are offline or have an un-reachable OS (Dell exclusive features).

Dell Command | Integration Suite for System Center - This suite integrates all the key components of the Client Command Suite into Microsoft System Center Configuration Manager 2012 and Current Branch versions.

Field service information

Topics:

- [Side cover](#)
- [Intrusion switch](#)
- [Front bezel](#)
- [Hard-drive assembly](#)
- [Solid-state drive](#)
- [Optical drive](#)
- [WLAN card](#)
- [Heat sink](#)
- [Coin-cell battery](#)
- [Expansion card](#)
- [Memory modules](#)
- [Processor](#)
- [Power-supply unit](#)
- [System board](#)

Side cover

Removing the side cover

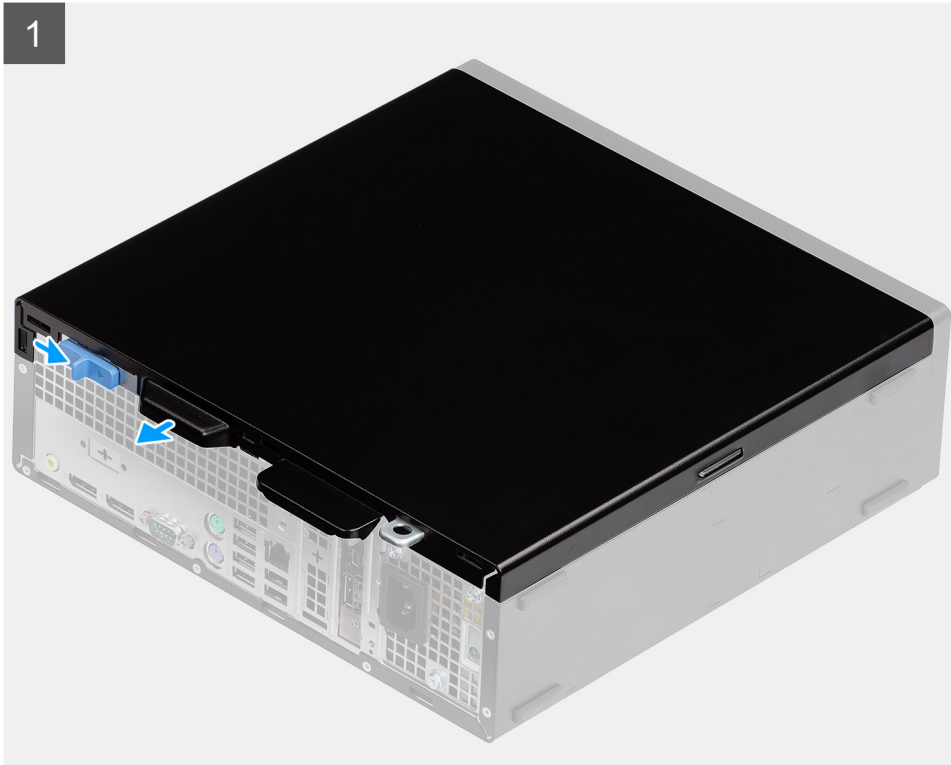
Prerequisites

1. Follow the procedure in [before working inside your computer](#).

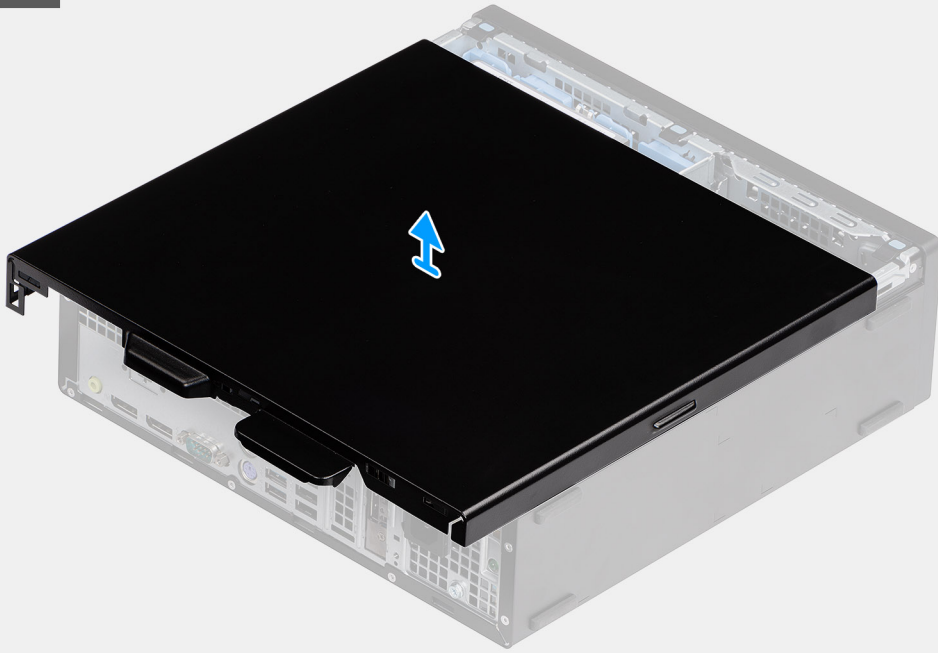
 **NOTE:** Ensure that you remove the security cable from the security-cable slot (if applicable).

About this task

The following images indicate the location of the side panels and provide a visual representation of the removal procedure.



2



1



2



Steps

1. Slide the release latch to the right until you hear a click and slide the cover towards the back of the system.
2. Lift the side cover from the system.

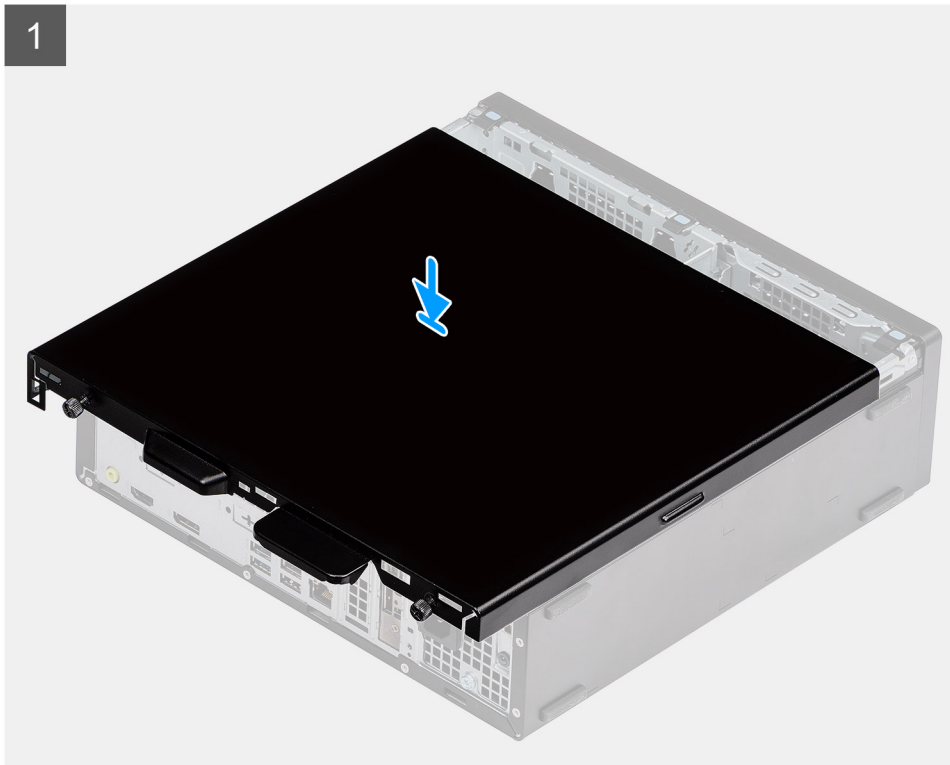
Installing the side cover

Prerequisites

If you are replacing a component, remove the existing component before performing the installation procedure.

About this task

The following image indicates the location of the side panel and provides a visual representation of the installation procedure.



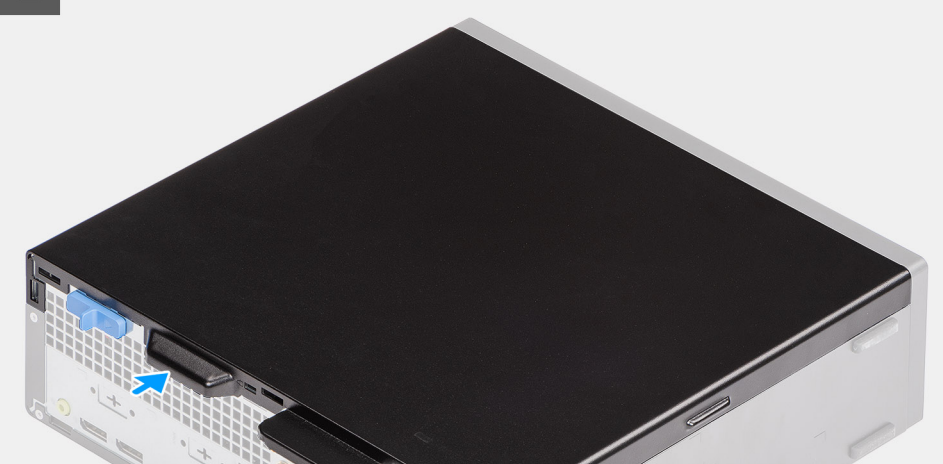
2



1



2



Steps

1. Place the side cover onto the system aligning the tabs on the chassis.
2. Slide the side cover towards the front of the system until you hear the release latch click.

Next steps

1. Follow the procedure in [after working inside your computer](#).

Intrusion switch

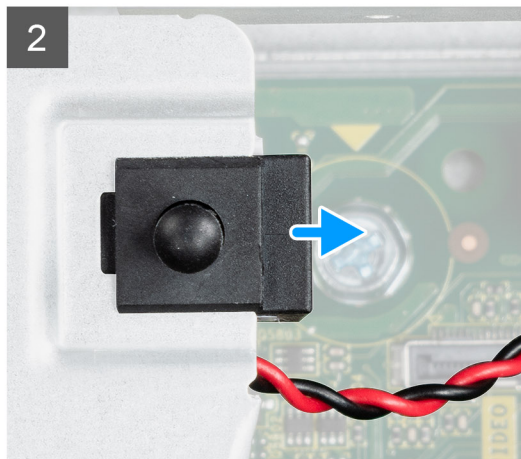
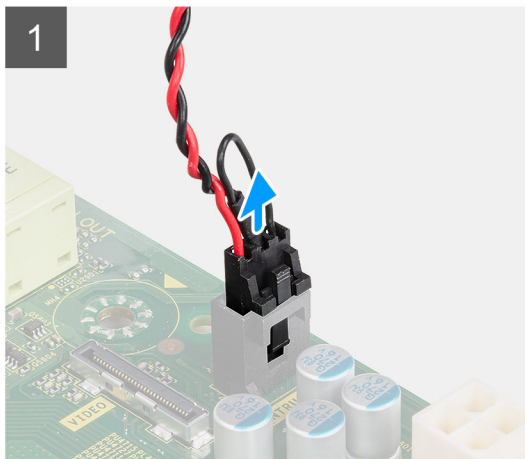
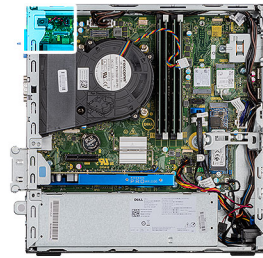
Removing the intrusion switch

Prerequisites

1. Follow the procedure in [before working inside your computer](#).
2. Remove the [side cover](#).

About this task

The following image indicate the location of the intrusion switch and provide a visual representation of the removal procedure.



Steps

1. Disconnect the intrusion switch cable from the connector on the system board.
2. Slide the intrusion switch and lift it away from the system .

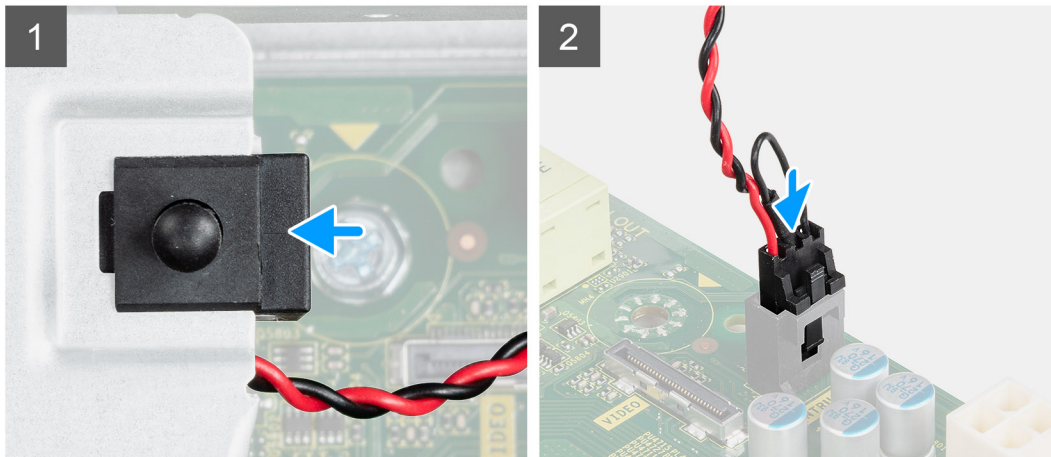
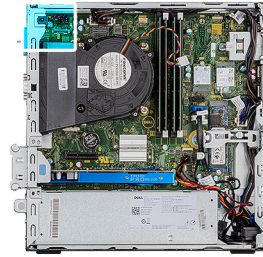
Installing the intrusion switch

Prerequisites

If you are replacing a component, remove the existing component before performing the installation procedure.

About this task

The following image indicates the location of the intrusion switch and provides a visual representation of the installation procedure.



Steps

1. Slide the intrusion switch into the slot on the chassis.
2. Connect the intrusion switch cable to the connector on the system board.

Next steps

1. Install the [side cover](#).
2. Follow the procedure in [after working inside your computer](#).

Front bezel

Removing the front bezel

Prerequisites

1. Follow the procedure in [before working inside your computer](#).
2. Remove the [side cover](#).

About this task

The following images indicate the location of the front bezel and provide a visual representation of the removal procedure.



Steps

1. Gentle pull the three retention tabs to release the left portion of the front bezel
2. Carefully move the front bezel to an angle, until the retention tabs on the right side are released from the chassis and move the front bezel away from the system.

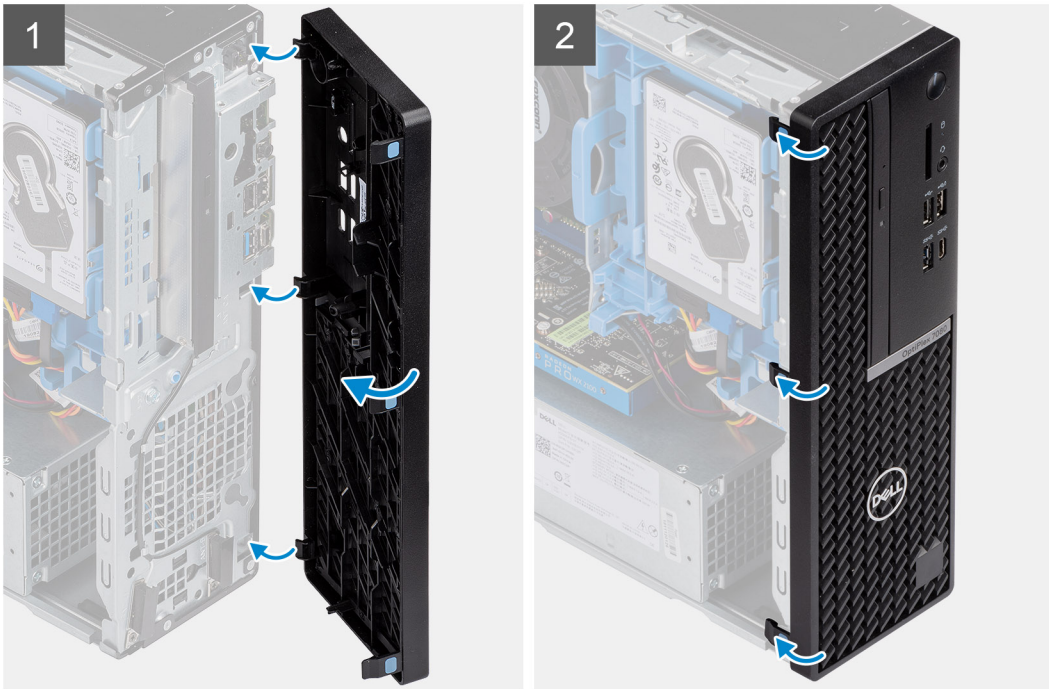
Installing the front bezel

Prerequisites

If you are replacing a component, remove the existing component before performing the installation procedure.

About this task

The following image indicates the location of the front bezel and provides a visual representation of the installation procedure.



Steps

1. Align the tabs from the right portion of the front bezel with the slots on the system chassis.
2. Move the bezel towards the system until the three tabs from the left portion of the bezel snap onto the chassis securing the bezel in place.

Next steps

1. Install the [side cover](#).
2. Follow the procedure in [after working inside your computer](#).

Hard-drive assembly

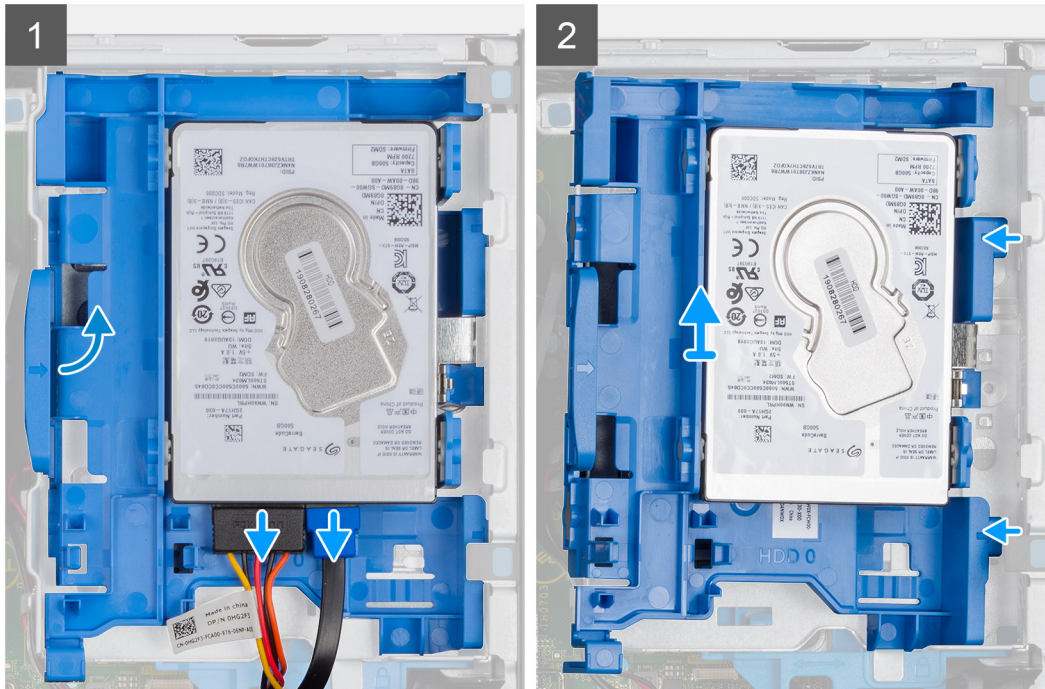
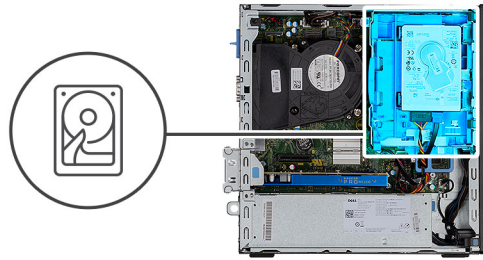
Removing the 2.5 in. hard-drive assembly

Prerequisites

1. Follow the procedure in [before working inside your computer](#).
2. Remove the [side cover](#).
3. Remove the [front bezel](#).

About this task

The following images indicate the location of the 2.5 in. hard-drive assembly and provide a visual representation of the removal procedure.



Steps

1. Disconnect the hard-drive data cable and power cable from the connectors on the hard drive. Push the left tab towards the hard-drive to free the assembly from the chassis
2. Release the hard-drive assembly from the tabs on the right side and slide the hard drive assembly out.

NOTE: Note the orientation of the hard drive so that you can replace it correctly.

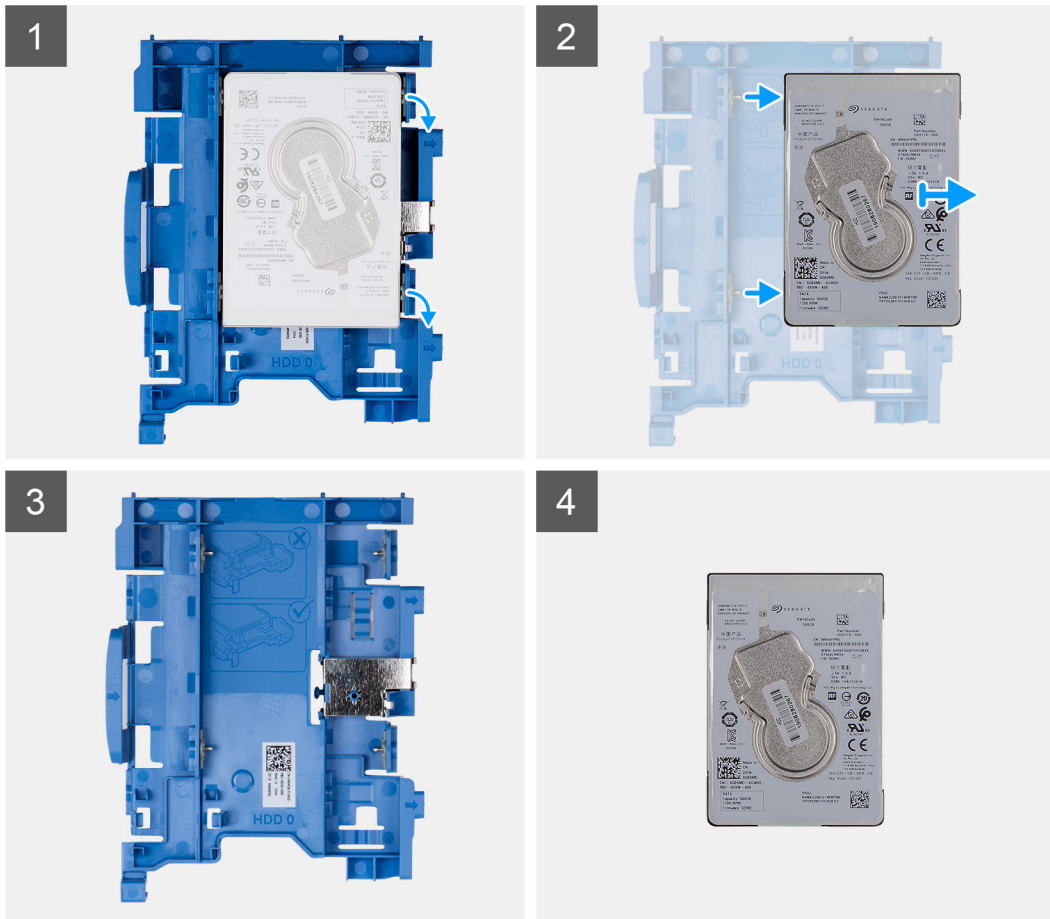
Removing the hard drive bracket

Prerequisites

1. Follow the procedure in [before working inside your computer](#).
2. Remove the [side cover](#).
3. Remove the [front bezel](#).
4. Remove the [2.5 in. hard drive assembly](#).

About this task

The following images indicate the location of the hard drive cage and provide a visual representation of the removal procedure.



Steps

1. Pull the two tabs from the hard-drive caddy away from the hard-drive.
2. Slide the hard-drive towards the right and lift it away from the system.

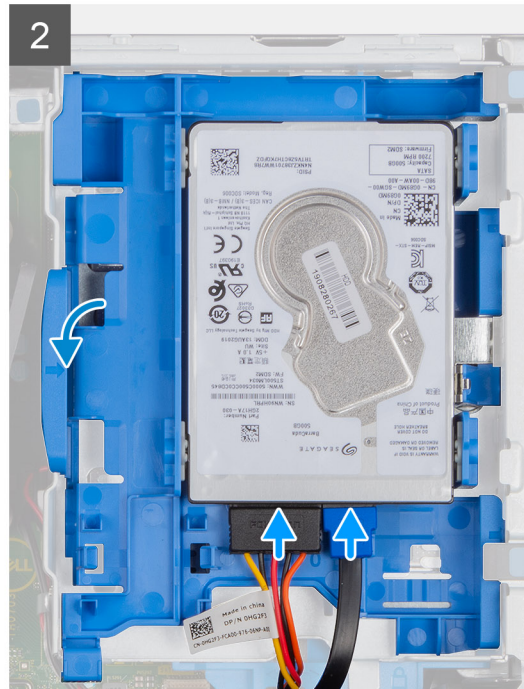
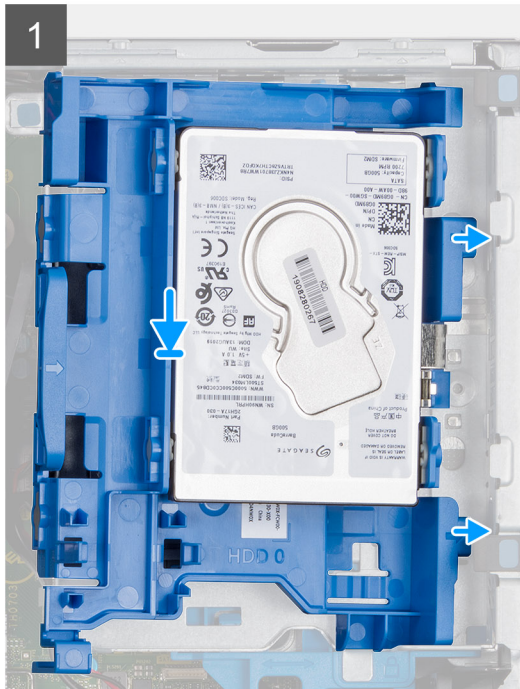
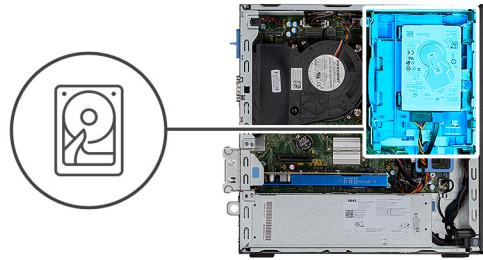
Installing the 2.5 in. hard-drive assembly

Prerequisites

If you are replacing a component, remove the existing component before performing the installation procedure.

About this task

The following image indicates the location of the 2.5 in. hard-drive and provides a visual representation of the installation procedure.



Steps

1. Place the hard-drive onto the caddy aligning the posts on the left side with the slots on the hard-drive. Push the tabs from the right side of the caddy away from the hard-drive until the hard-drive clicks in place.
2. Connect the power cable and hard-drive cable to the connectors on the hard drive.

Next steps

1. Install the [front bezel](#).
2. Install the [side cover](#).
3. Follow the procedure in [after working inside your computer](#).

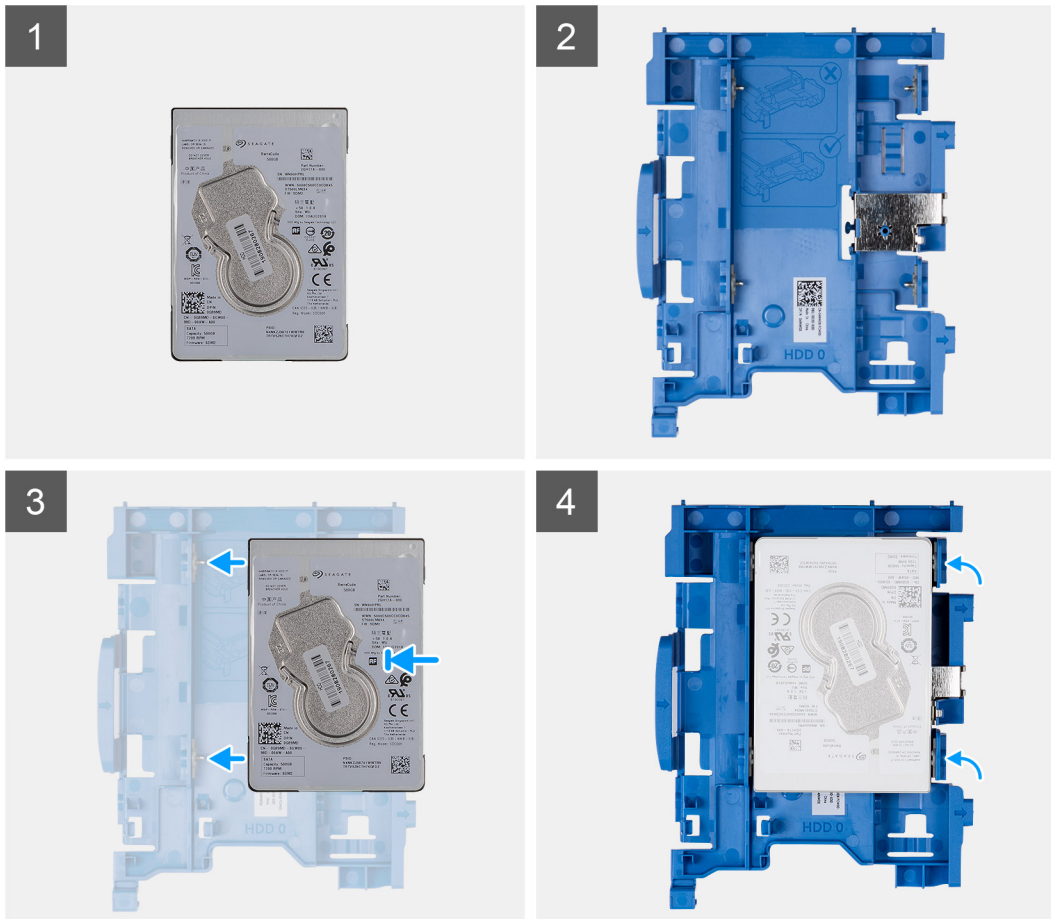
Installing the hard-drive bracket

Prerequisites

If you are replacing a component, remove the existing component before performing the installation procedure.

About this task

The following image indicates the location of the hard-drive bracket and provides a visual representation of the installation procedure.



Steps

1. Align the hard-drive with the notches on the bracket and place the hard-drive onto it.
2. Pull the tabs on the right side of the bracket until the hard-drive clicks into place.

Next steps

1. Install the [2.5 in. hard drive assembly](#).
2. Install the [front bezel](#).
3. Install the [side cover](#).
4. Follow the procedure in [after working inside your computer](#).

Solid-state drive

Removing the M.2 2230 PCIe solid-state drive

Prerequisites

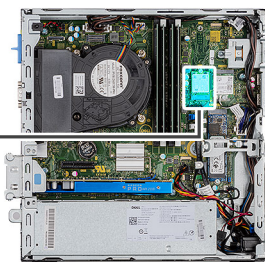
1. Follow the procedure in [before working inside your computer](#).
2. Remove the [side cover](#).
3. Remove the [front bezel](#).
4. Remove the [2.5 in. hard drive assembly](#).

About this task

The following images indicate the location of the solid-state drive and provide a visual representation of the removal procedure.



1x
M2x3



1



2



Steps

1. Remove the screw (M2x3) that secures the solid-state drive to the system board.
2. Slide and lift the solid-state drive off the system board.

Installing the M.2 2230 PCIe solid-state drive

Prerequisites

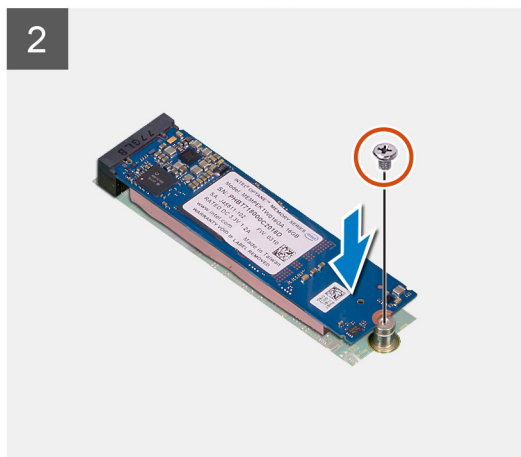
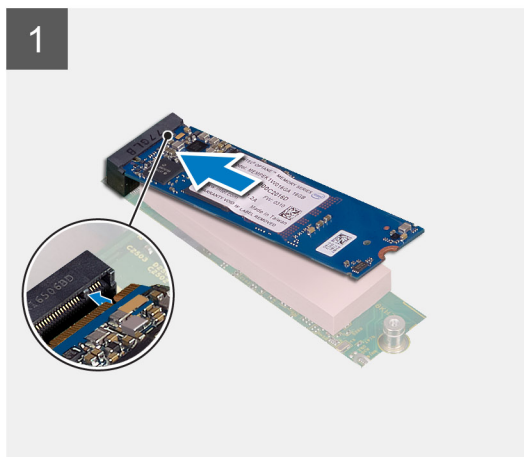
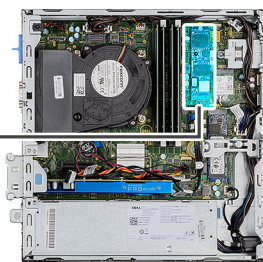
If you are replacing a component, remove the existing component before performing the installation procedure.

About this task

The following image indicates the location of the solid-state drive and provides a visual representation of the installation procedure.



1x
M2x3



Steps

1. Align the solid-state drive with the socket on the system board and slide it in.
2. Replace the screw (M2X3) that secures the M.2 PCIe solid-state drive to the system board.

Next steps

1. Install the [2.5 in. hard drive assembly](#).
2. Install the [front bezel](#).
3. Install the [side cover](#).
4. Follow the procedure in [after working inside your computer](#).

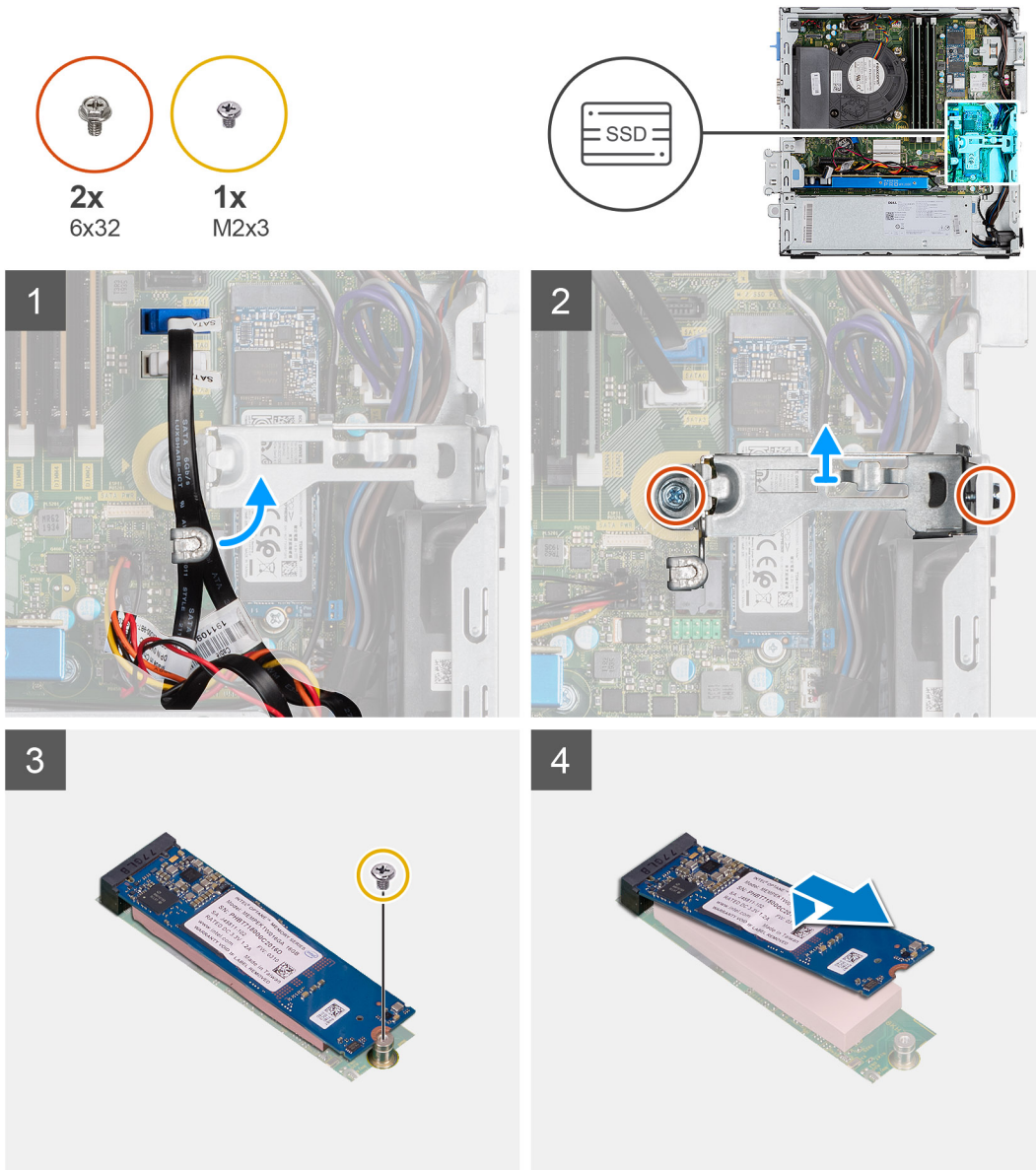
Removing the M.2 2280 PCIe solid-state drive

Prerequisites

1. Follow the procedure in [before working inside your computer](#).
2. Remove the [side cover](#).
3. Remove the [front bezel](#).
4. Remove the [2.5 in. hard drive assembly](#).

About this task

The following images indicate the location of the solid-state drive and provide a visual representation of the removal procedure.



Steps

1. Move the cables held by the cable management tab to access the metal bracket underneath.
2. Remove the two (6x32) screws securing the metal bracket and lift it away from the system.
3. Remove the screw (M2x3) that secures the solid-state drive to the system board.
4. Slide and lift the solid-state drive off the system board.

Installing the M.2 2280 PCIe solid-state drive

Prerequisites

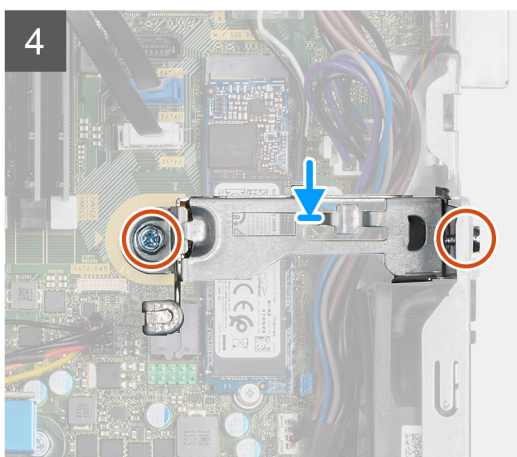
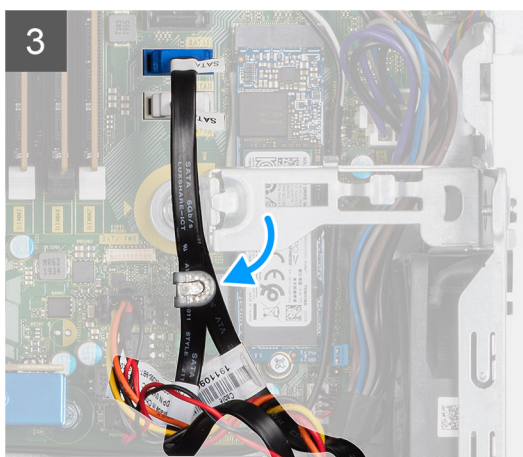
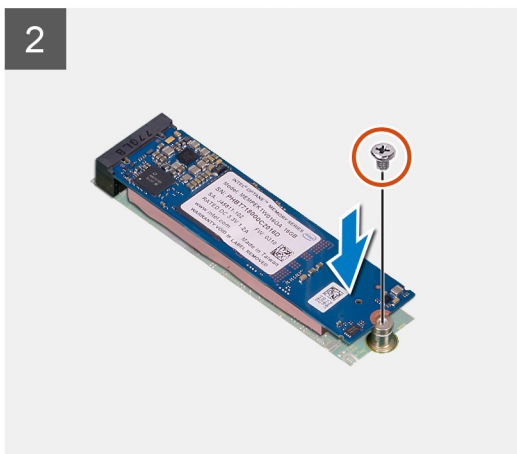
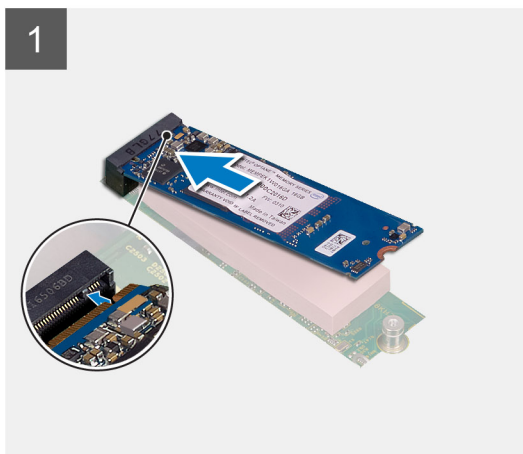
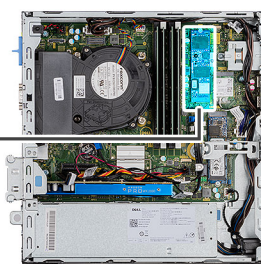
If you are replacing a component, remove the existing component before performing the installation procedure.

About this task

The following image indicates the location of the solid-state drive and provides a visual representation of the installation procedure.



1x
M2x3



Steps

1. Align the solid-state drive with the socket on the system board and slide it in.
2. Replace the screw (M2x3) that secures the solid-state drive to the system board.
3. Route the SATA cables through the cable management tab.
4. Secure the metal bracket to the chassis by installing the two (6x32) screws.

Next steps

1. Install the [2.5 in. hard drive assembly](#).
2. Install the [front bezel](#).
3. Install the [side cover](#).
4. Follow the procedure in [after working inside your computer](#).

Optical drive

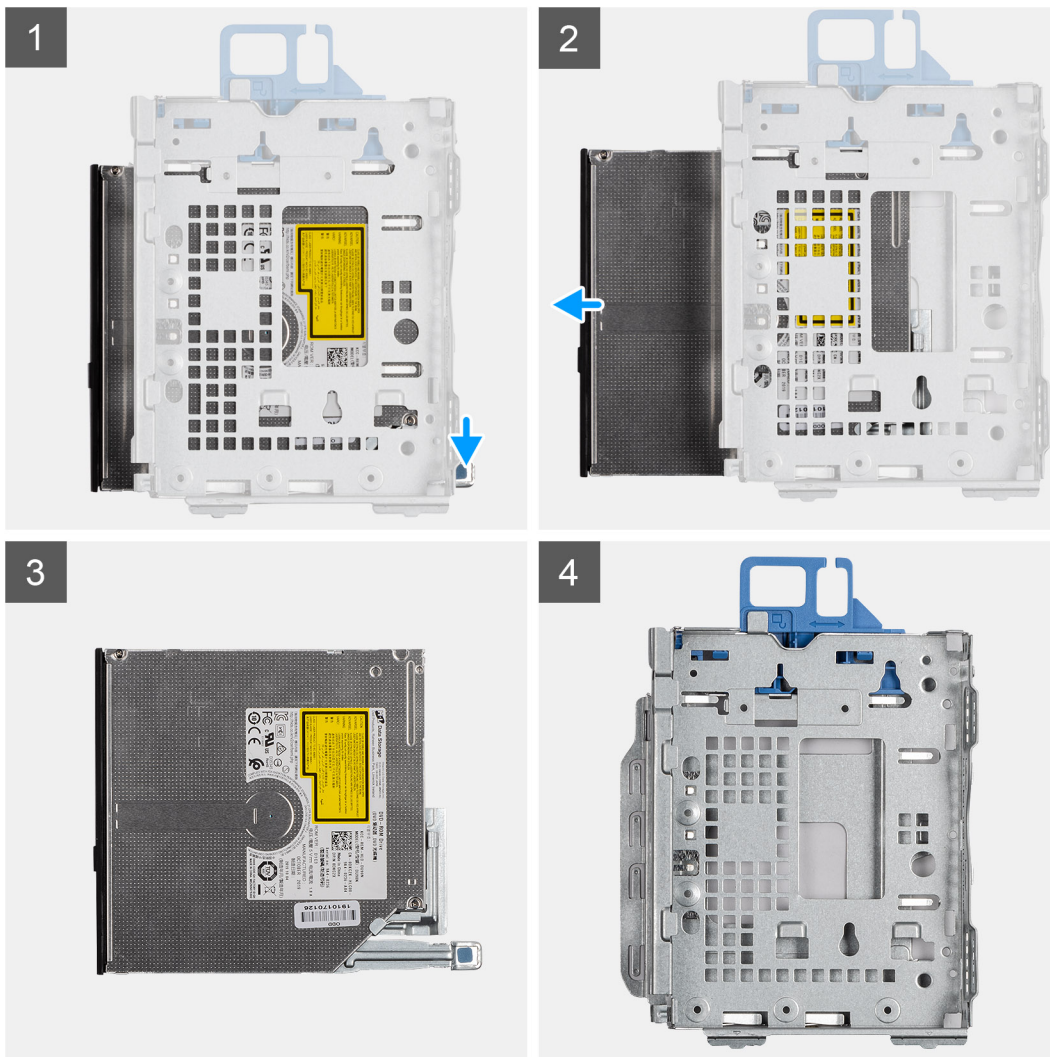
Removing the slim optical-drive

Prerequisites

1. Follow the procedure in [before working inside your computer](#).
2. Remove the [side cover](#).
3. Remove the [front bezel](#).

About this task

The following images indicate the location of the slim optical-drive and provide a visual representation of the removal procedure.



Steps

1. Press the release tab on the optical drive caddy.
2. Slide the optical drive out of the optical drive caddy.
3. Optical drive unit.
4. Optical drive caddy.

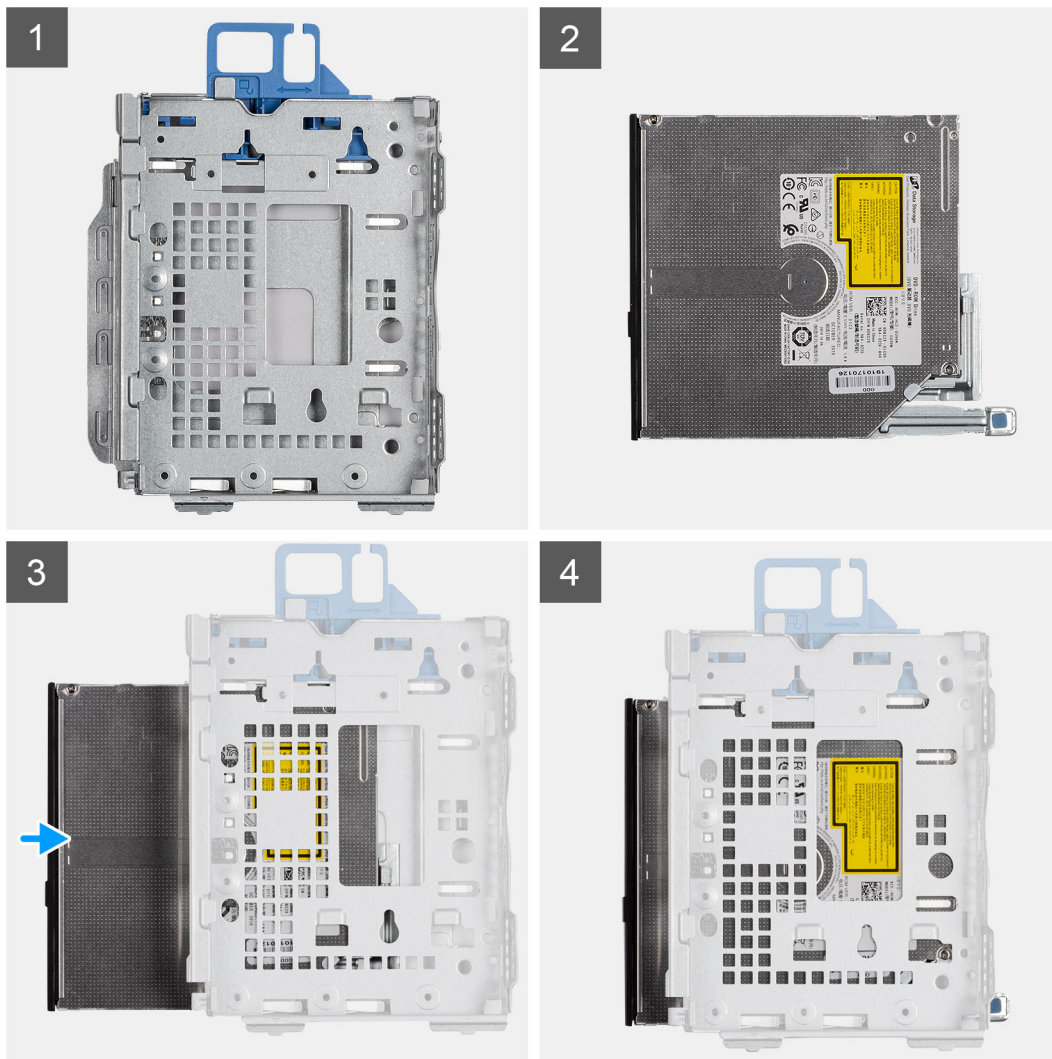
Installing the slim optical-drive

Prerequisites

If you are replacing a component, remove the existing component before performing the installation procedure.

About this task

The following image indicates the location of the slim optical-drive and provides a visual representation of the installation procedure.



Steps

1. Optical drive caddy
2. Optical drive unit.
3. Insert and slide in the optical drive into the optical drive caddy.
4. Press the Optical drive unit until it clicks in place.

Next steps

1. Install the [front bezel](#).
2. Install the [side cover](#).
3. Follow the procedure in [after working inside your computer](#).

WLAN card

Removing the WLAN card

Prerequisites

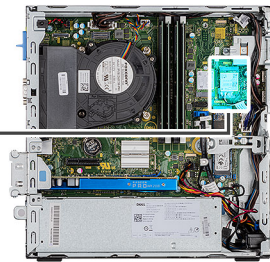
1. Follow the procedure in [before working inside your computer](#).
2. Remove the [side cover](#).
3. Remove the [front bezel](#).
4. Remove the [2.5 in. hard drive assembly](#).

About this task

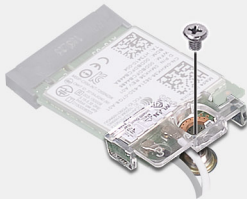
The following images indicate the location of the wireless card and provide a visual representation of the removal procedure.



1x
M2x3



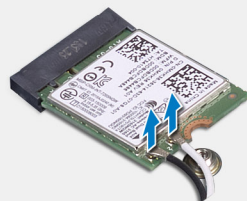
1



2



3



4



Steps

1. Remove the single (M2x3) screw that secures the metal bracket over the WLAN card to the system board.
2. Slide and lift the WLAN card bracket away from the WLAN card.
3. Disconnect the antenna cables from the WLAN card.
4. Slide and remove the WLAN card from the connector on the system board.

Installing the WLAN card

Prerequisites

If you are replacing a component, remove the existing component before performing the installation procedure.

About this task

The following image indicates the location of the wireless card and provides a visual representation of the installation procedure.



Steps

1. Connect the antenna cables to the WLAN card.
The following table provides the antenna-cable color scheme for the WLAN card of your computer.

Table 7. Antenna-cable color scheme

Connectors on the wireless card	Antenna-cable color
Main (white triangle)	White
Auxiliary (black triangle)	Black

2. Place the WLAN card bracket to secure the antenna cables.
3. Insert the WLAN card into the connector on the system board.

4. Install the single (M2x3) screw to secure the WLAN card.

Next steps

1. Install the [2.5 in. hard drive assembly](#).
2. Install the [front bezel](#).
3. Install the [side cover](#).
4. Follow the procedure in [after working inside your computer](#).

Heat sink

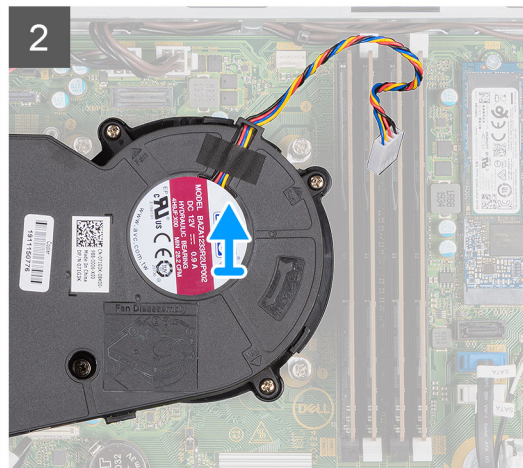
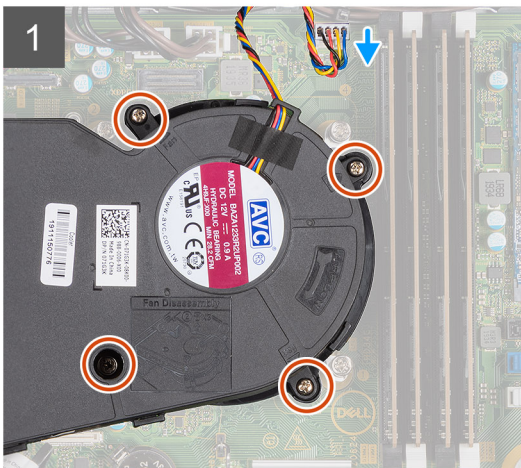
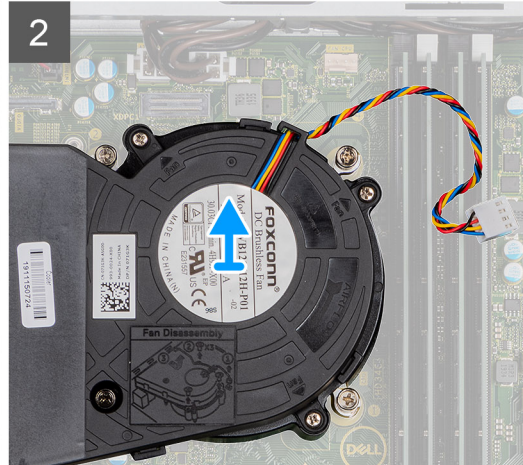
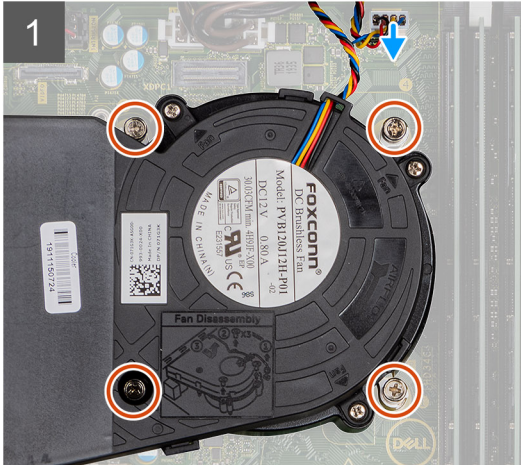
Removing the fan assembly

Prerequisites

1. Follow the procedure in [before working inside your computer](#).
2. Remove the [side cover](#).
3. Remove the [front bezel](#).

About this task

The following images indicate the location of the fan assembly and provide a visual representation of the removal procedure.



Steps

1. Disconnect the fan cable and loosen the four captive screws that secure the fan assembly to the system.
2. Lift the fan assembly from the system.

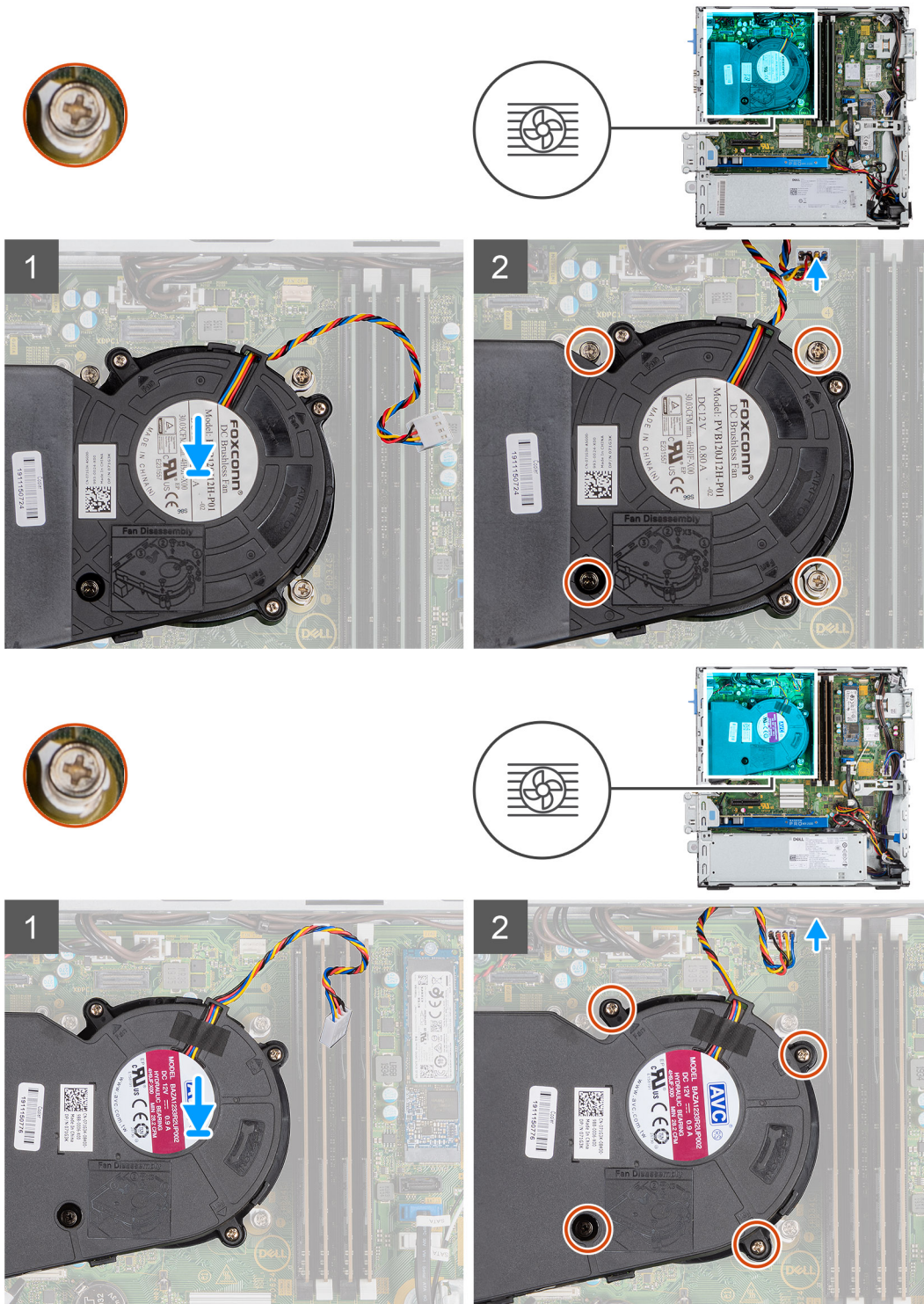
Installing the fan assembly

Prerequisites

If you are replacing a component, remove the existing component before performing the installation procedure.

About this task

The following image indicates the location of the fan assembly and provides a visual representation of the installation procedure.



Steps

1. Place the fan assembly onto the system board.
2. Tighten the captive screws that secure the fan assembly to the system board and connect the heat sink fan cable to the connector on the system board.

Next steps

1. Install the [front bezel](#).

2. Install the [side cover](#).
3. Follow the procedure in [after working inside your computer](#).

Coin-cell battery

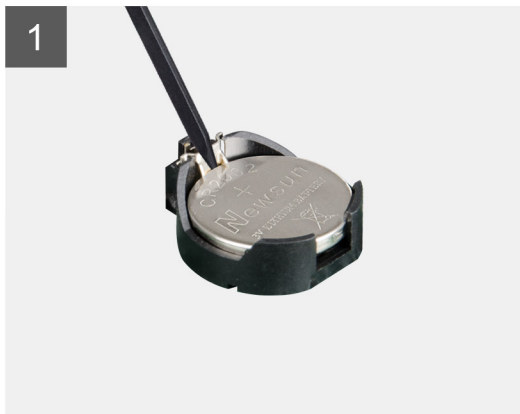
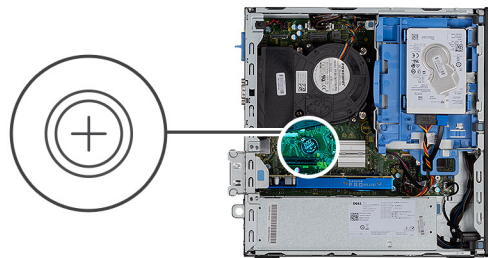
Removing the coin-cell battery

Prerequisites

1. Follow the procedure in [before working inside your computer](#).
2. Remove the [side cover](#).
3. Remove the [front bezel](#).

About this task

The following images indicate the location of the coin-cell battery and provide a visual representation of the removal procedure.



Steps

1. Using a plastic scribe, gently pry the coin-cell battery out of the socket on the system board.
2. Remove the coin-cell battery from the system.

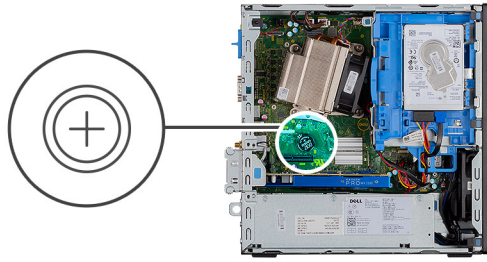
Installing the coin-cell battery

Prerequisites

If you are replacing a component, remove the existing component before performing the installation procedure.

About this task

The following image indicates the location of the coin-cell battery and provides a visual representation of the installation procedure.



Steps

1. Place the coin cell battery onto the socket on the system board. Ensure that the "+" sign is facing up and the tabs on the lower portion of the socket and holding the battery.
2. Gently push the battery into the socket until it locks in place.

Next steps

1. Install the [front bezel](#).
2. Install the [side cover](#).
3. Follow the procedure in [after working inside your computer](#).

Expansion card

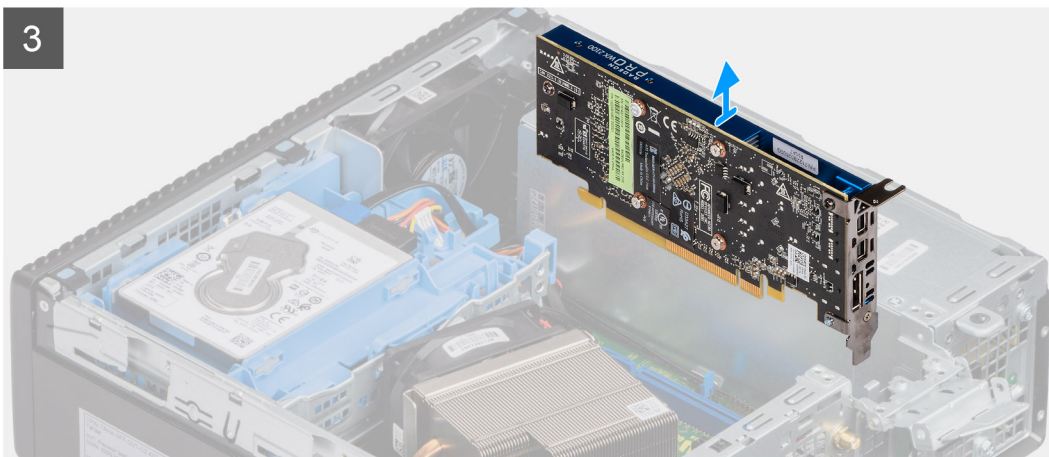
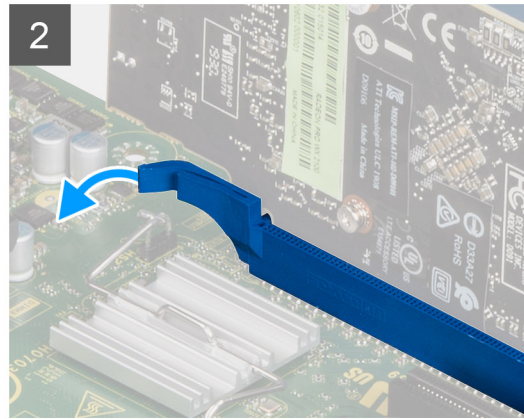
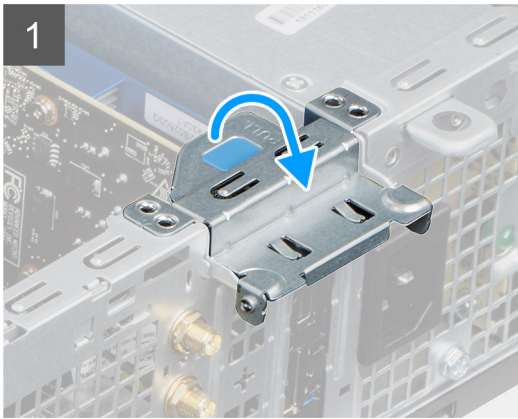
Removing the graphics card

Prerequisites

1. Follow the procedure in [before working inside your computer](#).
2. Remove the [side cover](#).

About this task

The following images indicate the location of the graphics card and provide a visual representation of the removal procedure.



Steps

1. Pull the metal tab to open the expansion card latch.
2. Pull the release tab at the base of the expansion card.
3. Lift the expansion card away from the connector on the system board.

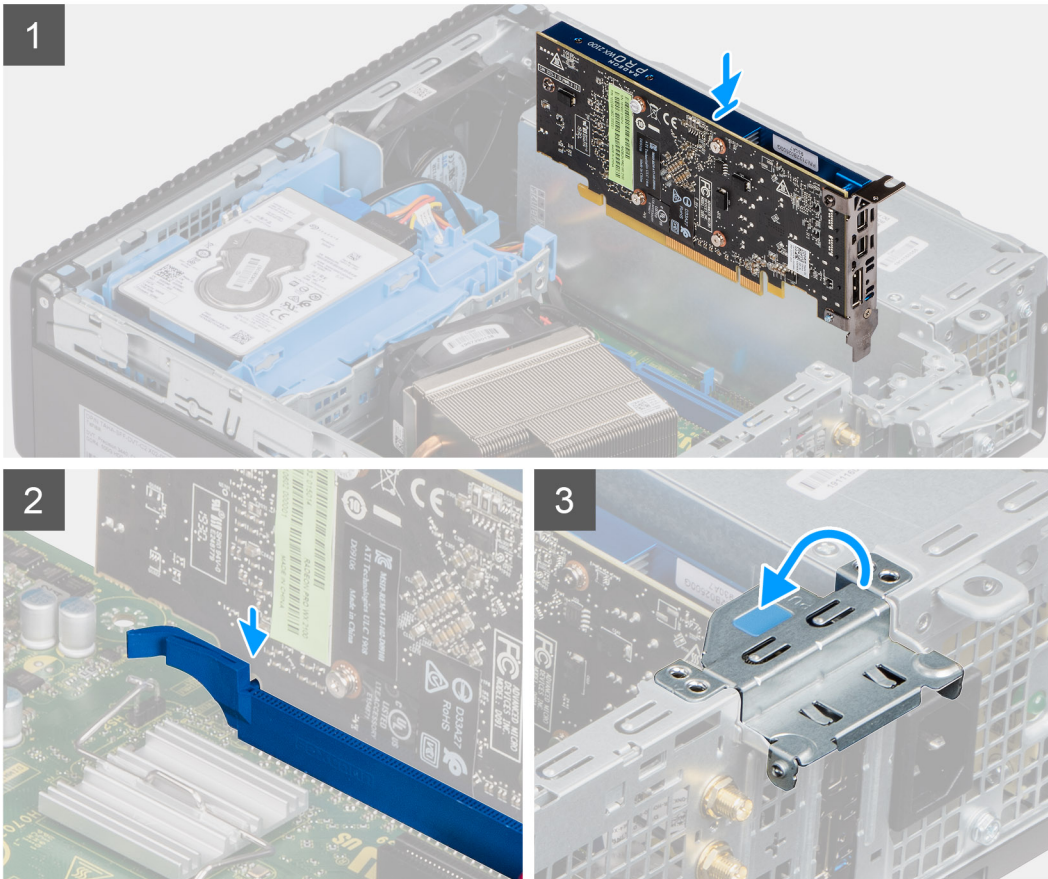
Installing the graphics card

Prerequisites

If you are replacing a component, remove the existing component before performing the installation procedure.

About this task

The following image indicates the location of the graphics card and provides a visual representation of the installation procedure.



Steps

1. Align the expansion card with the connector on the system board.
2. Place the card in the connector and press down firmly. Ensure that the card is firmly seated.
3. Close the expansion card latch and press it until it clicks into place.

Next steps

1. Install the [side cover](#).
2. Follow the procedure in [after working inside your computer](#).

Memory modules

Removing the memory modules

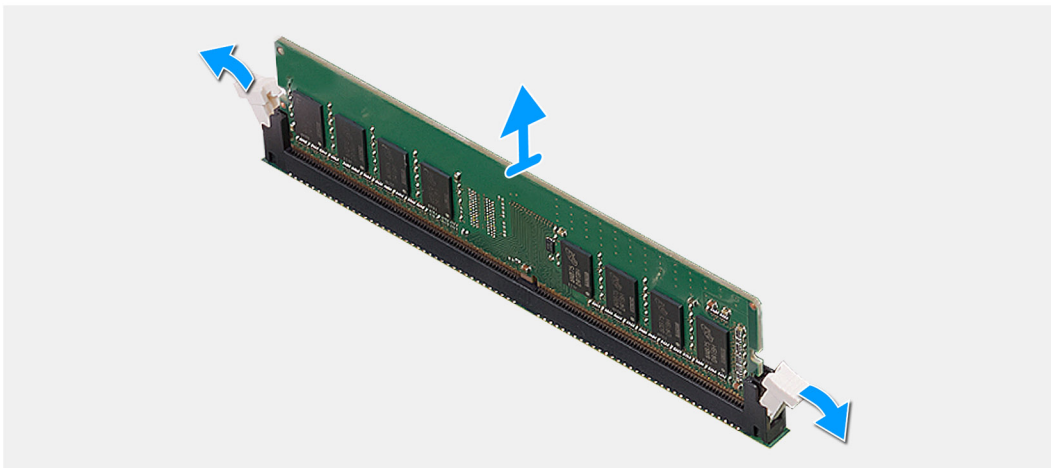
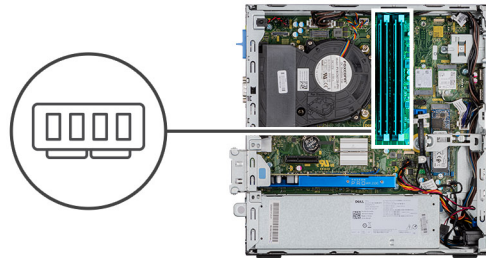
Prerequisites

1. Follow the procedure in [before working inside your computer](#).
2. Remove the [side cover](#).

NOTE: CAUTION: To prevent damage to the memory module, hold the memory module by the edges. Do not touch the components on the memory module.

About this task

The following images indicate the location of the memory modules and provide a visual representation of the removal procedure.



Steps

1. Pull the securing clips from both side of the memory module until the memory module pops up.
2. Remove the memory module from the memory-module slot.

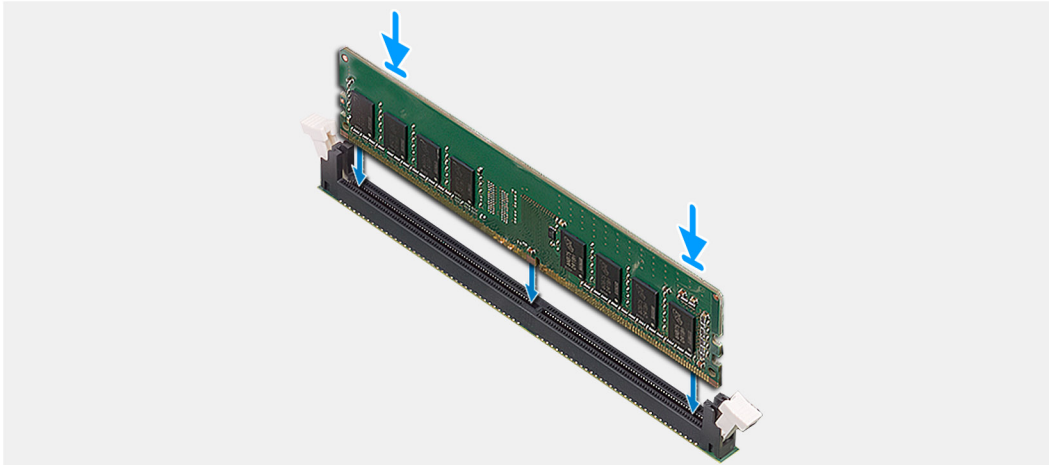
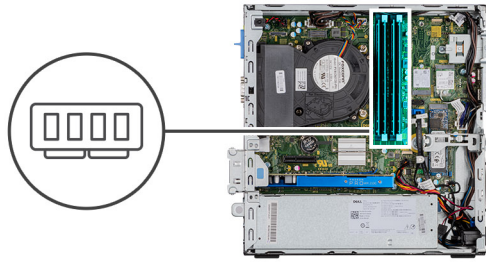
Installing the memory modules

Prerequisites

If you are replacing a component, remove the existing component before performing the installation procedure.

About this task

The following image indicates the location of the memory modules and provides a visual representation of the installation procedure.



Steps

1. Align the notch on the memory module with the tab on the memory-module slot.
2. Slide the memory module firmly into the slot at an angle and press the memory module down until it clicks into place.

NOTE: If you do not hear the click, remove the memory module and reinstall it.

Next steps

1. Install the [side cover](#).
2. Follow the procedure in [after working inside your computer](#).

Processor

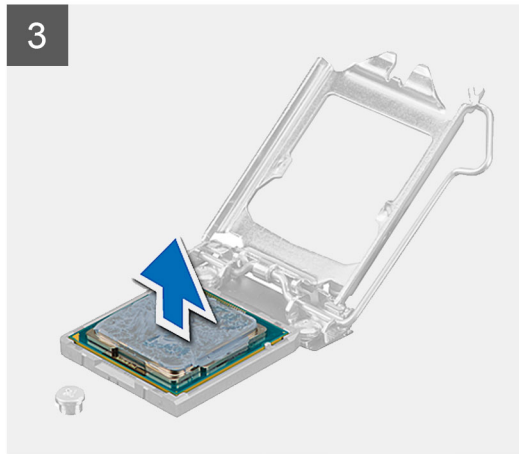
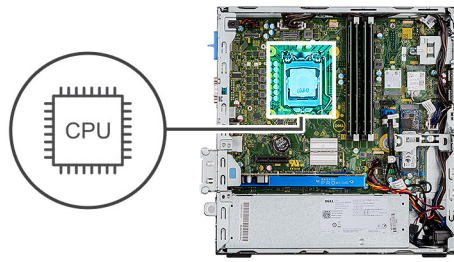
Removing the processor

Prerequisites

1. Follow the procedure in [before working inside your computer](#).
2. Remove the [side cover](#).
3. Remove the [fan assembly](#).

About this task

The following images indicate the location of the processor and provide a visual representation of the removal procedure.



Steps

1. Press down and push the release lever away from the processor to release it from the securing tab.
2. Lift the lever upward to lift the processor cover.

CAUTION: When removing the processor, do not touch any of the pins inside the socket or allow any objects to fall on the pins in the socket.

3. Gently lift the processor from the processor socket.

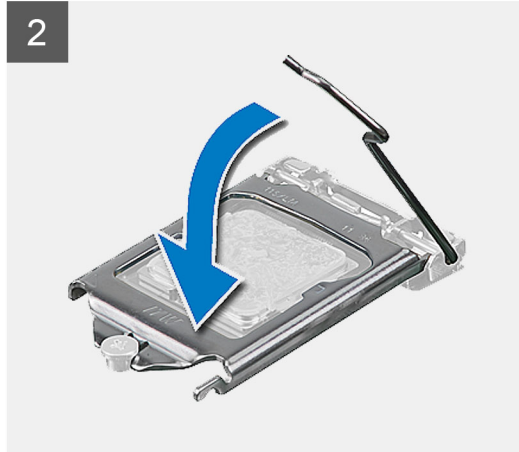
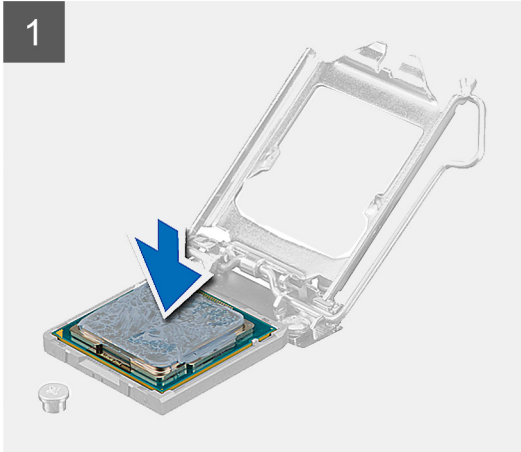
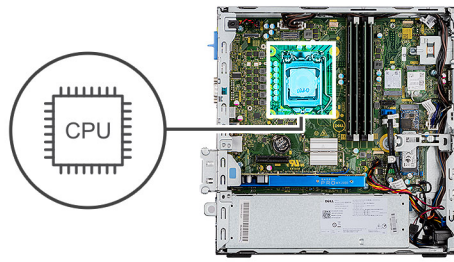
Installing the processor

Prerequisites

If you are replacing a component, remove the existing component before performing the installation procedure.

About this task

The following image indicates the location of the processor and provides a visual representation of the installation procedure.



Steps

1. Align the pin-1 corner of the processor with the pin 1 corner of the processor socket, and then place the processor in the processor socket.

NOTE: The pin-1 corner of the processor has a triangle that aligns with the triangle on the pin-1 corner on the processor socket. When the processor is properly seated, all four corners are aligned at the same height. If one or more corners of the processor are higher than the others, the processor is not seated properly.

2. When the processor is fully seated in the socket, close the processor cover.
3. Press down and push the release lever under the securing tab to lock it.

Next steps

1. Install the [heat-sink](#).
2. Install the [side cover](#).
3. Follow the procedure in [after working inside your computer](#).

Power-supply unit

Removing the power-supply unit

Prerequisites

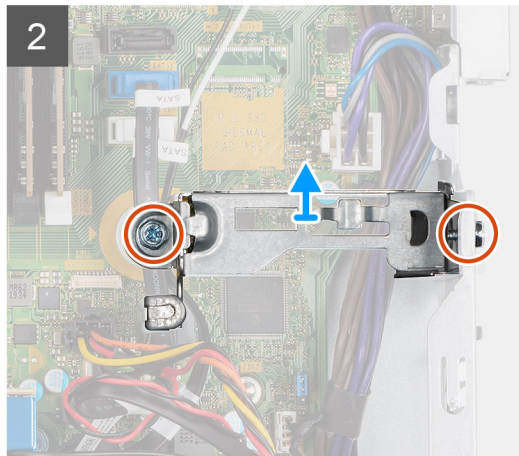
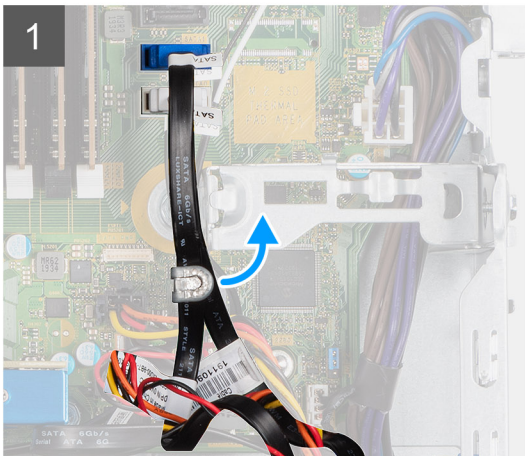
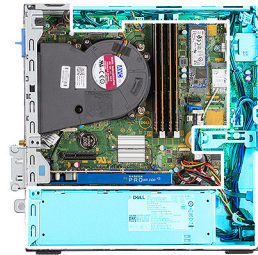
1. Follow the procedure in [before working inside your computer](#).
2. Remove the [side cover](#).
3. Remove the [2.5 in. hard drive assembly](#).
4. Remove the [memory modules](#).

About this task

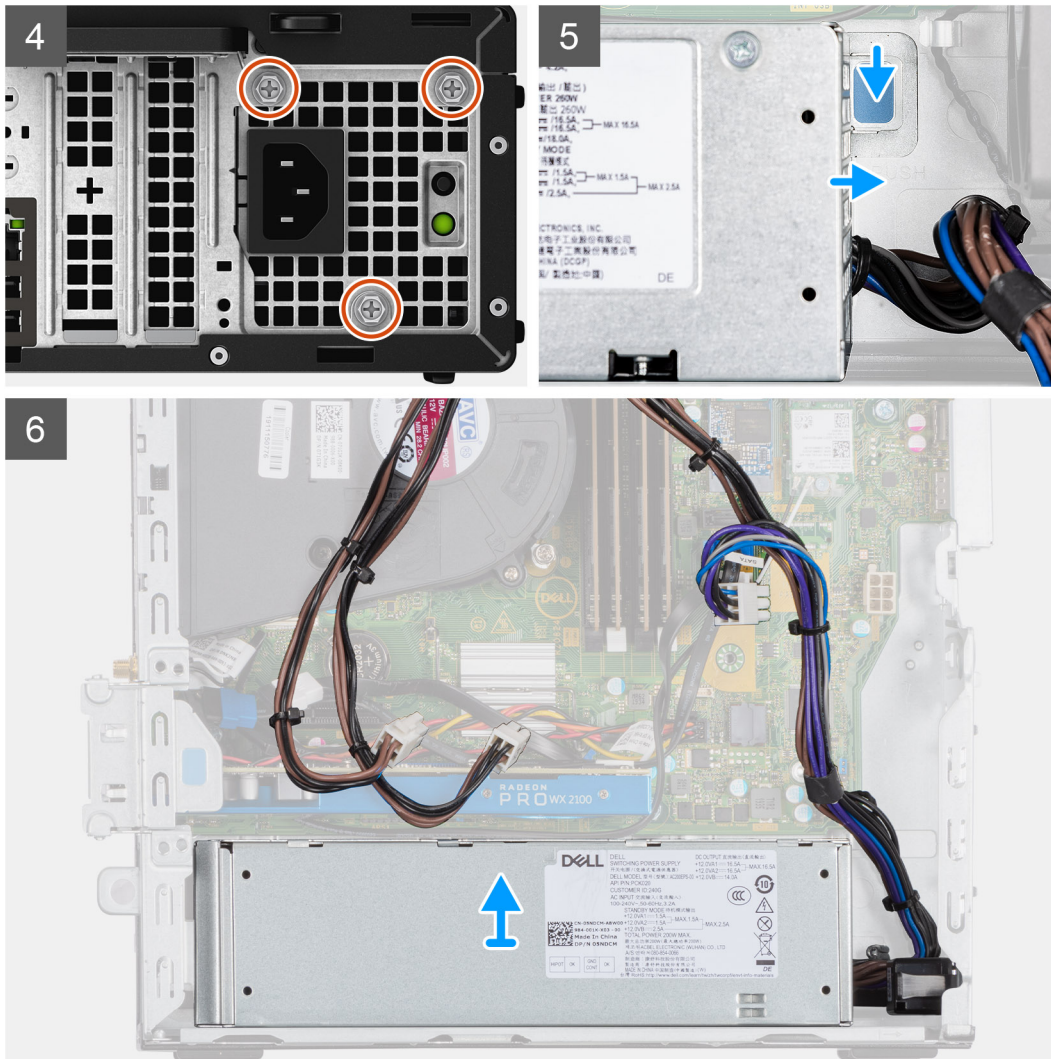
The following images indicate the location of the power-supply unit and provide a visual representation of the removal procedure.



5x
6x32







Steps

1. Remove the SATA cables from the retention clip on the support bracket.
2. Remove the two screws (M6X32) and slide the support bracket out from the slot.
3. Unroute the power-supply cable from the retention clip on the chassis.
4. Remove the three screws (M6X32) that secure the power-supply unit to the back of the chassis.
5. Press the power-supply unit release latch and slide the unit into the chassis.
6. Remove the power-supply unit out of the chassis.

Installing the power-supply unit

Prerequisites

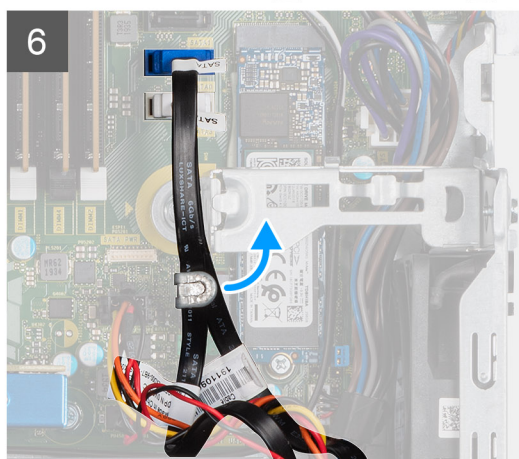
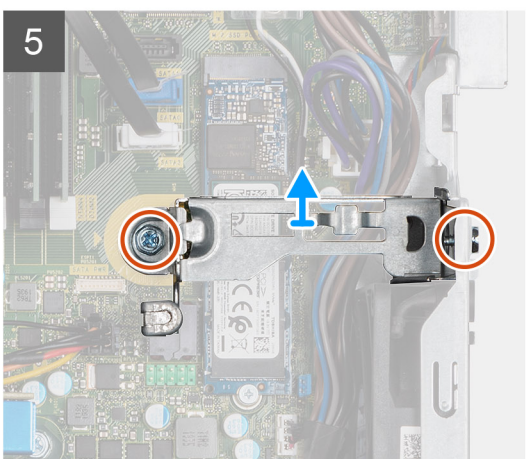
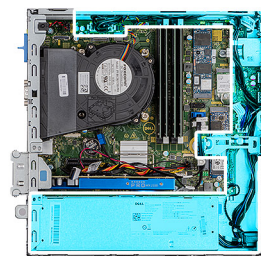
If you are replacing a component, remove the existing component before performing the installation procedure.

About this task

The following image indicates the location of the power-supply unit and provides a visual representation of the installation procedure.



5x
6x32



Steps

1. Align and place the power-supply unit into the slot on the chassis.
2. Slide the power-supply unit into the slot until it clicks in place.
3. Replace the three screws (M6X32) to secure the power-supply unit to the chassis.
4. Reroute the power-supply cables through retention clips and connect it to the connectors on the system board.
5. Place the support bracket into the slot and secure it with the two screws (M6X32).
6. Insert the SATA cables through the retention clip on the support bracket.

Next steps

1. Install the [memory modules](#).
2. Install the [2.5 in. hard-drive assembly](#).
3. Install the [side cover](#).
4. Follow the procedure in [after working inside your computer](#).

System board

Removing the system board

Prerequisites

1. Follow the procedure in [before working inside your computer](#).
2. Remove the [side cover](#).
3. Remove the [front bezel](#).
4. Remove the [hard drive assembly](#).
5. Remove the [solid-state drive](#).
6. Remove the [WLAN card](#).
7. Remove the [fan assembly](#).
8. Remove the [memory modules](#).
9. Remove the [processor](#).

About this task

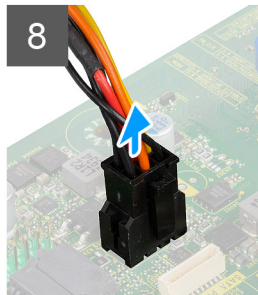
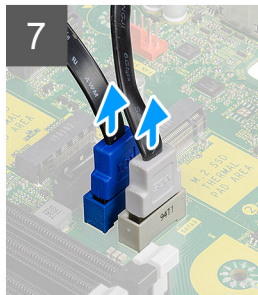
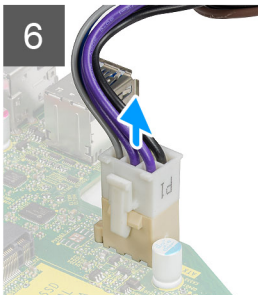
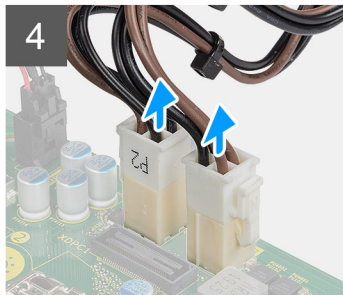
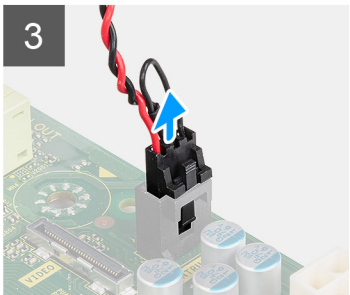
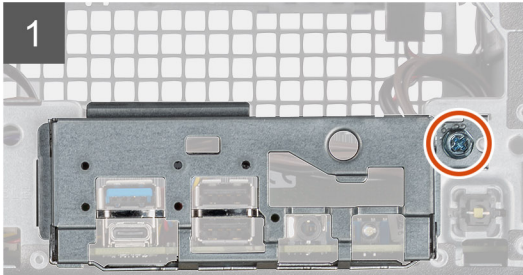
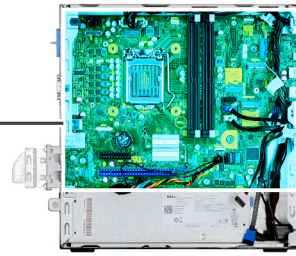
The following images indicate the location of the system board and provide a visual representation of the removal procedure.



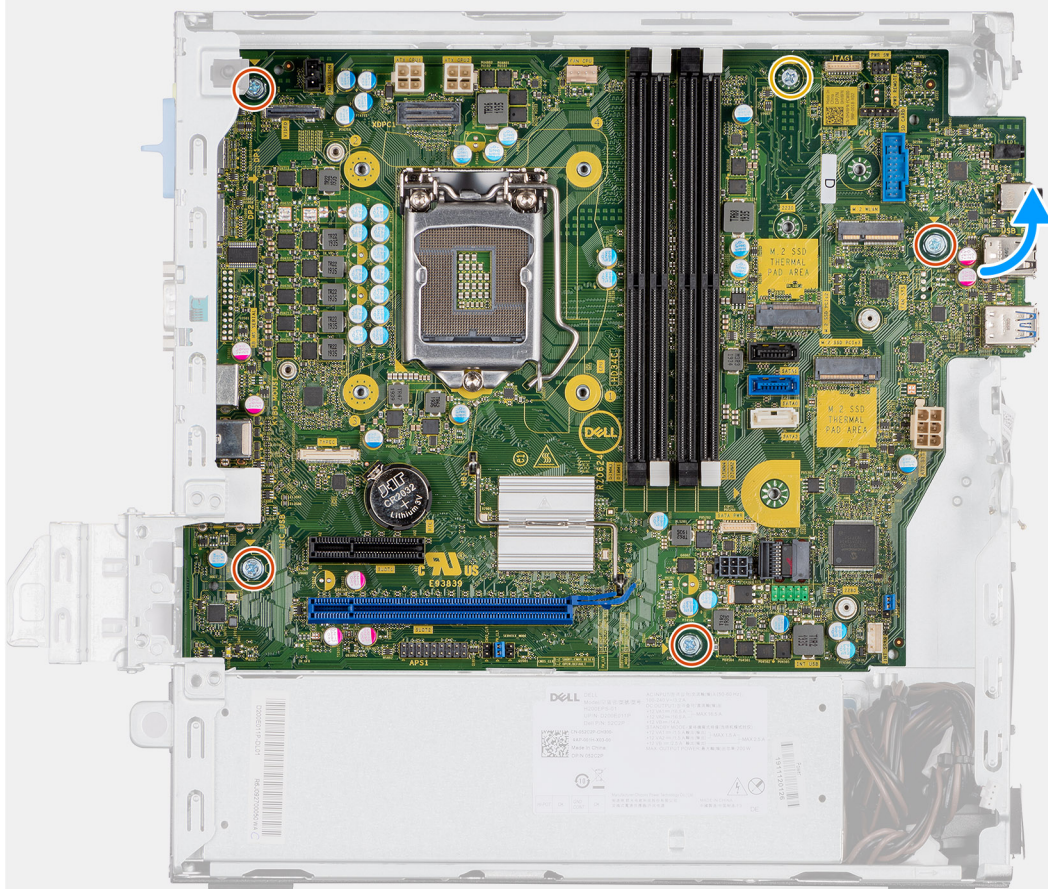
5x
6-32



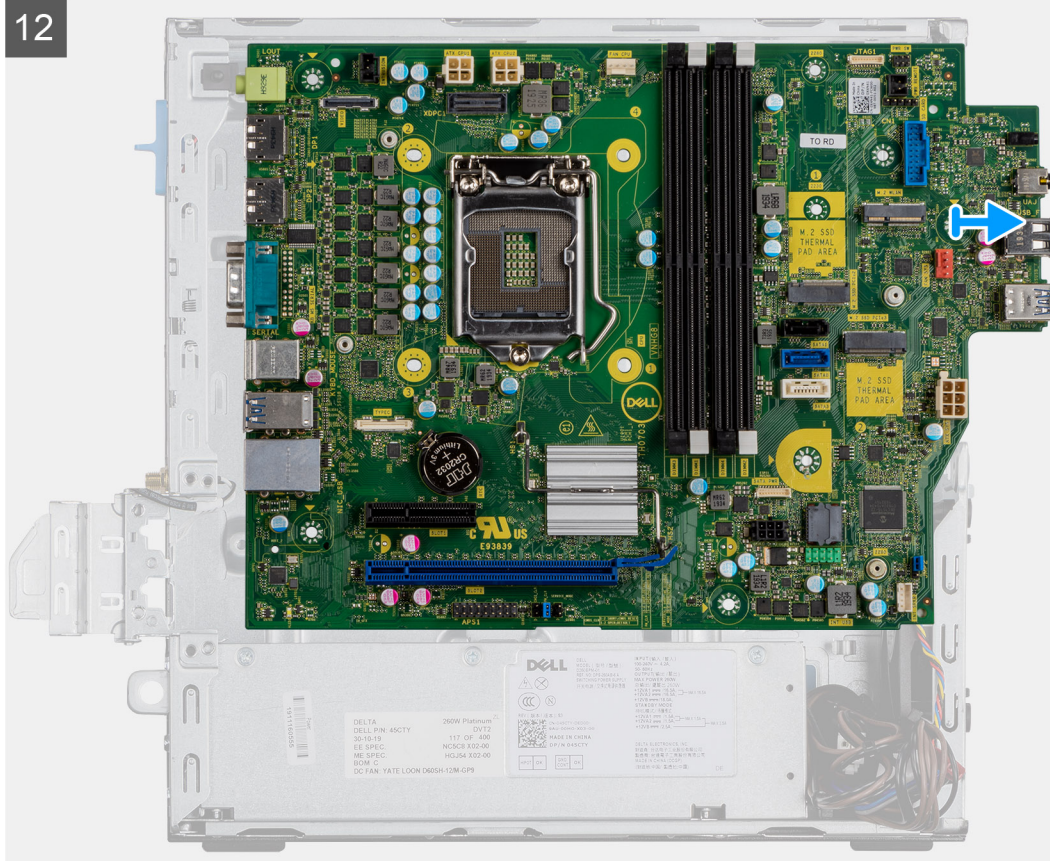
1x
M2x4

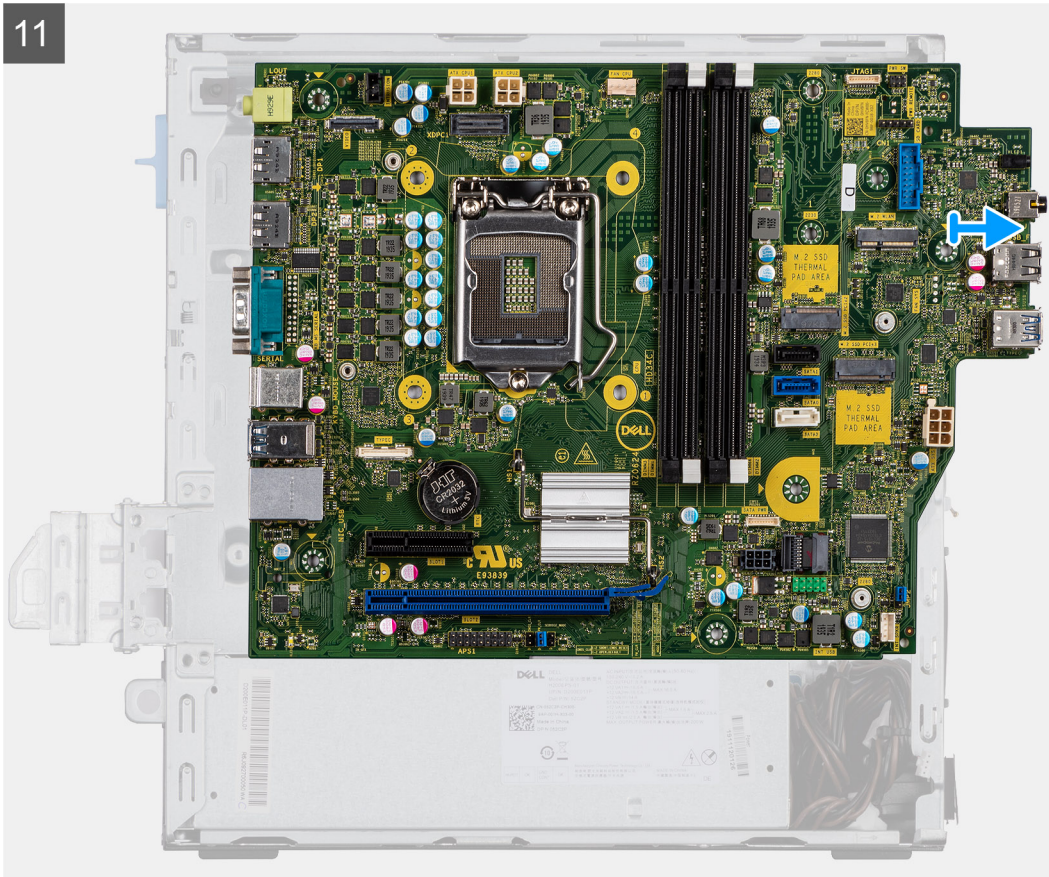


10



12





Steps

1. Remove the screw (6x32) that secures the I/O panel to the chassis.
2. Lift the I/O panel away from the chassis.
3. Disconnect the intrusion switch cable from the connector on the system board.
4. Disconnect the system board power supply cables from the connector on the system board.
5. Disconnect the power button switch cable from the connector on the system board..
6. Disconnect the system fan cable from the connector on the system board..
7. Disconnect the processor power supply cable from the connector on the system board.
8. Disconnect the SATA cables from the connector on the system board.
9. Disconnect the SATA power cable from the connector on the system board.
10. Disconnect the internal speaker cable from the connector on the system board.
11. Remove the four Screws (6x32) and the single standoff screw (M2x4) which secure the system board to the chassis.
12. Free the system board from the back I/O panel by sliding it towards the right and lift the system board out of the chassis.

Installing the system board

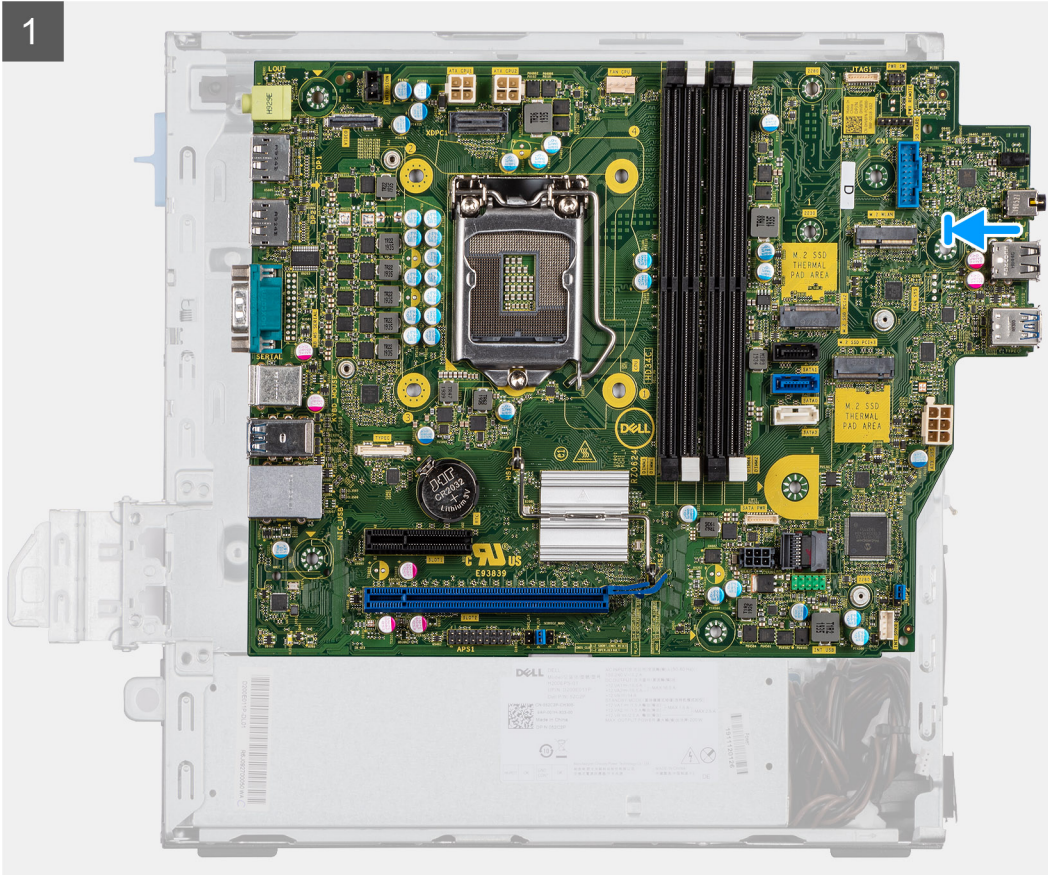
Prerequisites

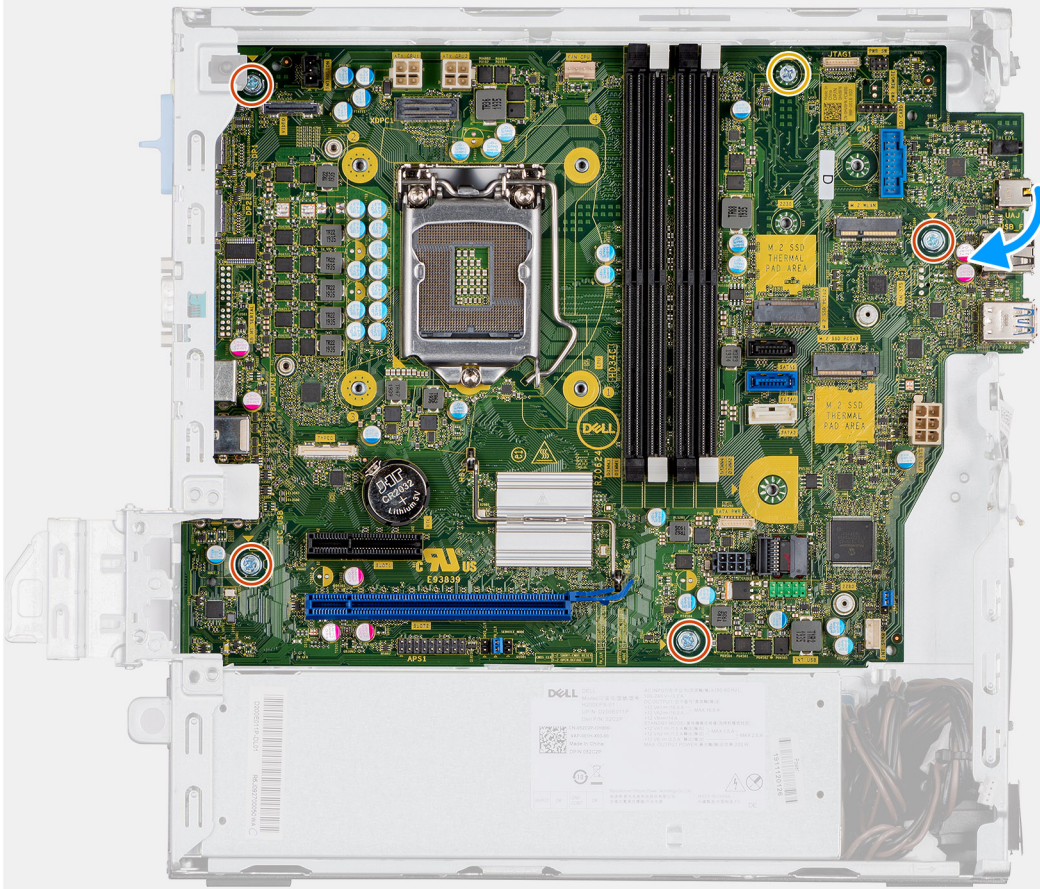
If you are replacing a component, remove the existing component before performing the installation procedure.

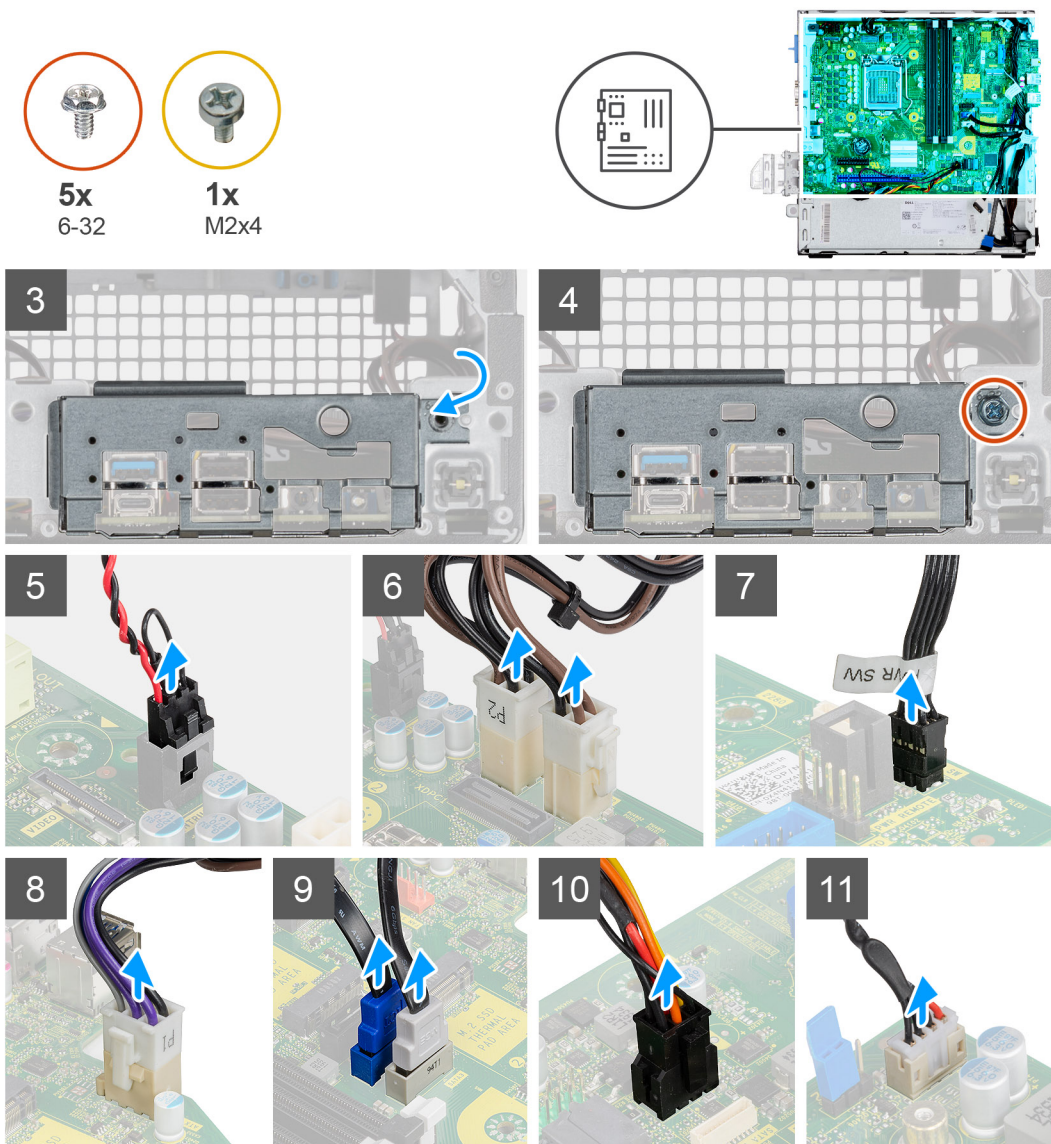
About this task

The following image indicates the location of the system board and provides a visual representation of the installation procedure.

1







Steps

1. Align and lower the system board into the system until the connectors at the back of the system board align with the slots on the chassis, and the screw holes on the system board align with the standoffs on the system.
2. Replace the four screws (6-32) and the single standoff screw (M2X4) screw to secure the system board to the chassis.
3. Align and lower the I/O panel into the slot on the chassis.
4. Replace the screws (6-32) to secure the I/O panel to the chassis.
5. Reconnect the intrusion switch cable.
6. Reconnect the system board power supply cables.
7. Reconnect the power button switch cable.
8. Reconnect the system fan cable.
9. Reconnect the processor power supply cable.
10. Reconnect the SATA cables.
11. Reconnect the SATA power cable.
12. Reconnect the internal speaker cables.

Next steps

1. Install the [processor](#).
2. Install the [fan assembly](#).
3. Install the [WLAN card](#).
4. Install the [solid-state drive](#).

5. Install the [memory modules](#).
6. Install the [2.5 in. hard-drive assembly](#).
7. Install the [side cover](#).
8. Follow the procedure in [after working inside your computer](#).

Troubleshooting

Topics:

- [Dell SupportAssist Pre-boot System Performance Check diagnostics](#)
- [Diagnostic LED behavior](#)
- [Diagnostic error messages](#)
- [System error messages](#)
- [WiFi power cycle](#)

Dell SupportAssist Pre-boot System Performance Check diagnostics

About this task

The SupportAssist diagnostics (also known as system diagnostics) performs a complete check of your hardware. The Dell SupportAssist Pre-boot System Performance Check diagnostics is embedded with the BIOS and is launched by the BIOS internally. The embedded system diagnostics provides a set of options for particular devices or device groups allowing you to:

- Run tests automatically or in an interactive mode
- Repeat tests
- Display or save test results
- Run thorough tests to introduce additional test options to provide extra information about the failed device(s)
- View status messages that inform you if tests are completed successfully
- View error messages that inform you of problems encountered during testing

 **NOTE:** Some tests for specific devices require user interaction. Always ensure that you are present at the computer terminal when the diagnostic tests are performed.

For more information, see [Resolve Hardware Issues With Built-in and Online Diagnostics \(SupportAssist ePSA, ePSA or PSA Error Codes\)](#).

Running the SupportAssist Pre-Boot System Performance Check

Steps

1. Turn on your computer.
2. As the computer boots, press the F12 key as the Dell logo appears.
3. On the boot menu screen, select the **Diagnostics** option.
4. Click the arrow at the bottom left corner.
Diagnostics front page is displayed.
5. Click the arrow in the lower-right corner to go to the page listing.
The items detected are listed.
6. To run a diagnostic test on a specific device, press Esc and click **Yes** to stop the diagnostic test.
7. Select the device from the left pane and click **Run Tests**.
8. If there are any issues, error codes are displayed.
Note the error code and validation number and contact Dell.

Diagnostic LED behavior

Table 8. Diagnostic LED behavior

Blinking pattern		Problem description	Suggested resolution
Amber	White		
1	2	Unrecoverable SPI Flash Failure	
2	1	CPU failure	<ul style="list-style-type: none"> Run the Intel CPU diagnostics tools. If problem persists, replace the system board.
2	2	System board failure (included BIOS corruption or ROM error)	<ul style="list-style-type: none"> Flash latest BIOS version If problem persists, replace the system board.
2	3	No memory/RAM detected	<ul style="list-style-type: none"> Confirm that the memory module is installed properly. If problem persists, replace the memory module.
2	4	Memory/RAM failure	<ul style="list-style-type: none"> Reset the memory module. If problem persists, replace the memory module.
2	5	Invalid memory installed	<ul style="list-style-type: none"> Reset the memory module. If problem persists, replace the memory module.
2	6	System board / Chipset Error / Clock failure / Gate A20 failure / Super I/O failure / Keyboard controller failure	<ul style="list-style-type: none"> Flash latest BIOS version If problem persists, replace the system board.
3	1	CMOS battery failure	<ul style="list-style-type: none"> Reset the CMOS battery connection. If problem persists, replace the RTS battery.
3	2	PCI or Video card/chip failure	Replace the system board.
3	3	BIOS Recovery image not found	<ul style="list-style-type: none"> Flash latest BIOS version If problem persists, replace the system board.
3	4	BIOS Recovery image found but invalid	<ul style="list-style-type: none"> Flash latest BIOS version If problem persists, replace the system board.
3	5	Power rail failure	<ul style="list-style-type: none"> EC ran into power sequencing failure. If problem persists, replace the system board.
3	6	SBIOS Flash corruption	<ul style="list-style-type: none"> Flash corruption detected by SBIOS If problem persists, replace the system board.

Table 8. Diagnostic LED behavior (continued)

Blinking pattern		Problem description	Suggested resolution
Amber	White		
3	7	Intel ME (Management Engine) Error	<ul style="list-style-type: none"> Timeout waiting on ME to reply to HECI message If problem persists, replace the system board.
4	2	CPU Power Cable Connection Issue	

Diagnostic error messages

Table 9. Diagnostic error messages

Error messages	Description
AUXILIARY DEVICE FAILURE	The touchpad or external mouse may be faulty. For an external mouse, check the cable connection. Enable the Pointing Device option in the System Setup program.
BAD COMMAND OR FILE NAME	Ensure that you have spelled the command correctly, put spaces in the proper place, and used the correct path name.
CACHE DISABLED DUE TO FAILURE	The primary cache internal to the microprocessor has failed. Contact Dell
CD DRIVE CONTROLLER FAILURE	The optical drive does not respond to commands from the computer.
DATA ERROR	The hard drive cannot read the data.
DECREASING AVAILABLE MEMORY	One or more memory modules may be faulty or improperly seated. Reinstall the memory modules or, if necessary, replace them.
DISK C: FAILED INITIALIZATION	The hard drive failed initialization. Run the hard drive tests in Dell Diagnostics .
DRIVE NOT READY	The operation requires a hard drive in the bay before it can continue. Install a hard drive in the hard drive bay.
ERROR READING PCMCIA CARD	The computer cannot identify the ExpressCard. Reinsert the card or try another card.
EXTENDED MEMORY SIZE HAS CHANGED	The amount of memory recorded in non-volatile memory (NVRAM) does not match the memory module installed in the computer. Restart the computer. If the error appears again, Contact Dell
THE FILE BEING COPIED IS TOO LARGE FOR THE DESTINATION DRIVE	The file that you are trying to copy is too large to fit on the disk, or the disk is full. Try copying the file to a different disk or use a larger capacity disk.
A FILENAME CANNOT CONTAIN ANY OF THE FOLLOWING CHARACTERS: \ / : * ? " < > -	Do not use these characters in filenames.
GATE A20 FAILURE	A memory module may be loose. Reinstall the memory module or, if necessary, replace it.
GENERAL FAILURE	The operating system is unable to carry out the command. The message is usually followed by specific information. For example, <i>Printer out of paper</i> . Take the appropriate action.
HARD-DISK DRIVE CONFIGURATION ERROR	The computer cannot identify the drive type. Shut down the computer, remove the hard drive, and boot the computer from an

Table 9. Diagnostic error messages (continued)

Error messages	Description
	optical drive. Then, shut down the computer, reinstall the hard drive, and restart the computer. Run the Hard Disk Drive tests in Dell Diagnostics .
HARD-DISK DRIVE CONTROLLER FAILURE 0	The hard drive does not respond to commands from the computer. Shut down the computer, remove the hard drive, and boot the computer from an optical drive. Then, shut down the computer, reinstall the hard drive, and restart the computer. If the problem persists, try another drive. Run the Hard Disk Drive tests in Dell Diagnostics .
HARD-DISK DRIVE FAILURE	The hard drive does not respond to commands from the computer. Shut down the computer, remove the hard drive, and boot the computer from an optical drive. Then, shut down the computer, reinstall the hard drive, and restart the computer. If the problem persists, try another drive. Run the Hard Disk Drive tests in Dell Diagnostics .
HARD-DISK DRIVE READ FAILURE	The hard drive may be defective. Shut down the computer, remove the hard drive, and boot the computer from an optical. Then, shut down the computer, reinstall the hard drive, and restart the computer. If the problem persists, try another drive. Run the Hard Disk Drive tests in Dell Diagnostics .
INSERT BOOTABLE MEDIA	The operating system is trying to boot to non-bootable media, such as an optical drive. Insert bootable media.
INVALID CONFIGURATION INFORMATION-PLEASE RUN SYSTEM SETUP PROGRAM	The system configuration information does not match the hardware configuration. The message is most likely to occur after a memory module is installed. Correct the appropriate options in the system setup program.
KEYBOARD CLOCK LINE FAILURE	For external keyboards, check the cable connection. Run the Keyboard Controller test in Dell Diagnostics .
KEYBOARD CONTROLLER FAILURE	For external keyboards, check the cable connection. Restart the computer, and avoid touching the keyboard or the mouse during the boot routine. Run the Keyboard Controller test in Dell Diagnostics .
KEYBOARD DATA LINE FAILURE	For external keyboards, check the cable connection. Run the Keyboard Controller test in Dell Diagnostics .
KEYBOARD STUCK KEY FAILURE	For external keyboards or keypads, check the cable connection. Restart the computer, and avoid touching the keyboard or keys during the boot routine. Run the Stuck Key test in Dell Diagnostics .
LICENSED CONTENT IS NOT ACCESSIBLE IN MEDIADIRECT	Dell MediaDirect cannot verify the Digital Rights Management (DRM) restrictions on the file, so the file cannot be played.
MEMORY ADDRESS LINE FAILURE AT ADDRESS, READ VALUE EXPECTING VALUE	A memory module may be faulty or improperly seated. Reinstall the memory module or, if necessary, replace it.
MEMORY ALLOCATION ERROR	The software you are attempting to run is conflicting with the operating system, another program, or a utility. Shut down the computer, wait for 30 seconds, and then restart it. Run the program again. If the error message still appears, see the software documentation.
MEMORY DOUBLE WORD LOGIC FAILURE AT ADDRESS, READ VALUE EXPECTING VALUE	A memory module may be faulty or improperly seated. Reinstall the memory module or, if necessary, replace it.
MEMORY ODD/EVEN LOGIC FAILURE AT ADDRESS, READ VALUE EXPECTING VALUE	A memory module may be faulty or improperly seated. Reinstall the memory module or, if necessary, replace it.

Table 9. Diagnostic error messages (continued)

Error messages	Description
MEMORY WRITE/READ FAILURE AT ADDRESS, READ VALUE EXPECTING VALUE	A memory module may be faulty or improperly seated. Reinstall the memory module or, if necessary, replace it.
NO BOOT DEVICE AVAILABLE	The computer cannot find the hard drive. If the hard drive is your boot device, ensure that the drive is installed, properly seated, and partitioned as a boot device.
NO BOOT SECTOR ON HARD DRIVE	The operating system may be corrupted, Contact Dell .
NO TIMER TICK INTERRUPT	A chip on the system board may be malfunctioning. Run the System Set tests in Dell Diagnostics .
NOT ENOUGH MEMORY OR RESOURCES. EXIT SOME PROGRAMS AND TRY AGAIN	You have too many programs open. Close all windows and open the program that you want to use.
OPERATING SYSTEM NOT FOUND	Reinstall the operating system. If the problem persists, Contact Dell .
OPTIONAL ROM BAD CHECKSUM	The optional ROM has failed. Contact Dell .
SECTOR NOT FOUND	The operating system cannot locate a sector on the hard drive. You may have a defective sector or corrupted File Allocation Table (FAT) on the hard drive. Run the Windows error-checking utility to check the file structure on the hard drive. See Windows Help and Support for instructions (click Start > Help and Support). If a large number of sectors are defective, back up the data (if possible), and then format the hard drive.
SEEK ERROR	The operating system cannot find a specific track on the hard drive.
SHUTDOWN FAILURE	A chip on the system board may be malfunctioning. Run the System Set tests in Dell Diagnostics . If the message reappears, Contact Dell .
TIME-OF-DAY CLOCK LOST POWER	System configuration settings are corrupted. Connect your computer to an electrical outlet to charge the battery. If the problem persists, try to restore the data by entering the System Setup program, then immediately exit the program. If the message reappears, Contact Dell .
TIME-OF-DAY CLOCK STOPPED	The reserve battery that supports the system configuration settings may require recharging. Connect your computer to an electrical outlet to charge the battery. If the problem persists, Contact Dell .
TIME-OF-DAY NOT SET-PLEASE RUN THE SYSTEM SETUP PROGRAM	The time or date stored in the system setup program does not match the system clock. Correct the settings for the Date and Time options.
TIMER CHIP COUNTER 2 FAILED	A chip on the system board may be malfunctioning. Run the System Set tests in Dell Diagnostics .
UNEXPECTED INTERRUPT IN PROTECTED MODE	The keyboard controller may be malfunctioning, or a memory module may be loose. Run the System Memory tests and the Keyboard Controller test in Dell Diagnostics or Contact Dell .
X:\ IS NOT ACCESSIBLE. THE DEVICE IS NOT READY	Insert a disk into the drive and try again.

System error messages


Table 10. System error messages

System message	Description
Alert! Previous attempts at booting this system have failed at checkpoint [nnnn]. For help in resolving this problem, please note this checkpoint and contact Dell Technical Support	The computer failed to complete the boot routine three consecutive times for the same error.
CMOS checksum error	RTC is reset, BIOS Setup default has been loaded.
CPU fan failure	CPU fan has failed.
System fan failure	System fan has failed.
Hard-disk drive failure	Possible hard disk drive failure during POST.
Keyboard failure	Keyboard failure or loose cable. If reseating the cable does not solve the problem, replace the keyboard.
No boot device available	No bootable partition on hard disk drive, the hard disk drive cable is loose, or no bootable device exists. <ul style="list-style-type: none">• If the hard drive is your boot device, ensure that the cables are connected and that the drive is installed properly and partitioned as a boot device.• Enter system setup and ensure that the boot sequence information is correct.
No timer tick interrupt	A chip on the system board might be malfunctioning or motherboard failure.
NOTICE - Hard Drive SELF MONITORING SYSTEM has reported that a parameter has exceeded its normal operating range. Dell recommends that you back up your data regularly. A parameter out of range may or may not indicate a potential hard drive problem	S.M.A.R.T error, possible hard disk drive failure.

WiFi power cycle

About this task

If your computer is unable to access the internet due to WiFi connectivity issues a WiFi power cycle procedure may be performed. The following procedure provides the instructions on how to conduct a WiFi power cycle:

 **NOTE:** Some ISPs (Internet Service Providers) provide a modem/router combo device.

Steps

1. Turn off your computer.
2. Turn off the modem.
3. Turn off the wireless router.
4. Wait for 30 seconds.
5. Turn on the wireless router.
6. Turn on the modem.
7. Turn on your computer.


Getting help

Topics:

- [Contacting Dell](#)

Contacting Dell

Prerequisites

 **NOTE:** If you do not have an active Internet connection, you can find contact information on your purchase invoice, packing slip, bill, or Dell product catalog.

About this task

Dell provides several online and telephone-based support and service options. Availability varies by country and product, and some services may not be available in your area. To contact Dell for sales, technical support, or customer service issues:

Steps

1. Go to **Dell.com/support**.
2. Select your support category.
3. Verify your country or region in the **Choose a Country/Region** drop-down list at the bottom of the page.
4. Select the appropriate service or support link based on your need.