

**ThinkPad**<sup>®</sup> P15 Gen 1/T15g Gen 1

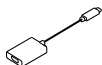
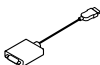
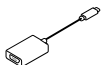
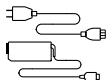
# Setup Guide

**Lenovo**

For Barcode Position Only

Printed in China

# Initial Setup

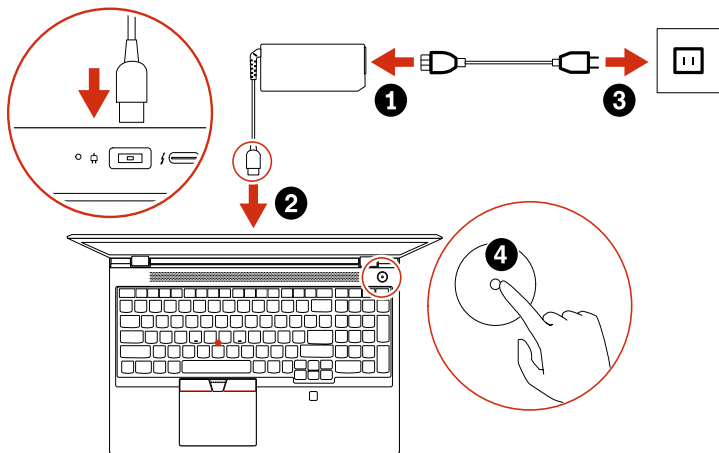


\* Lenovo USB-C to VGA Adapter

\* Lenovo HDMI to VGA Adapter

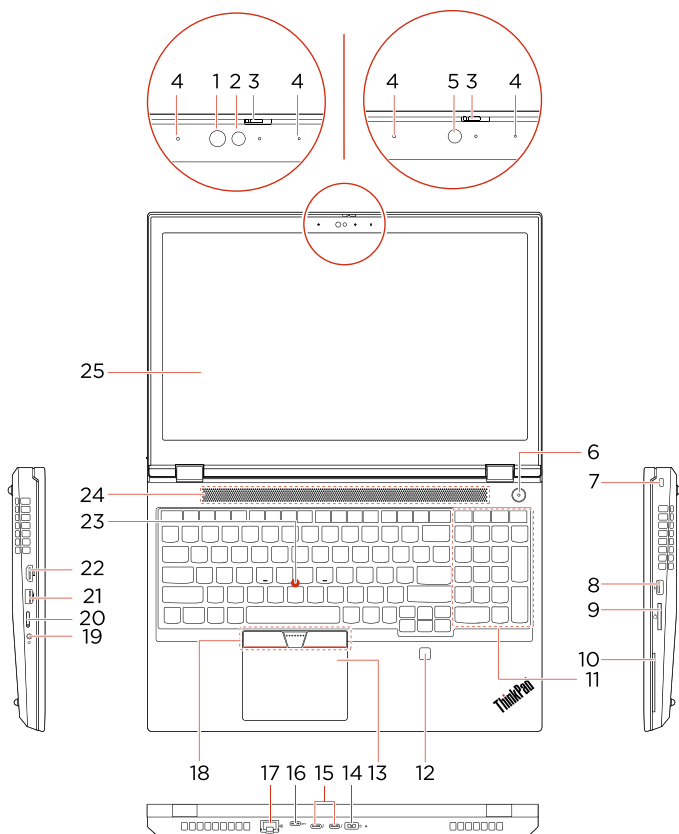
\* Lenovo Pen Pro, Pen Holder, USB-C Cable

\* Lenovo USB-C to DisplayPort Adapter



\* For selected models

# Overview



- \* 1. Infrared (IR) LED
- \* 2. Camera with IR function
- \* 3. ThinkShutter
- 4. Microphones
- \* 5. Camera
- 6. Power button
- 7. Security-lock slot
- 8. USB 3.2 connector Gen 1
- 9. SD-card slot
- \* 10. Smart-card slot
- 11. Numeric keypad
- 12. Fingerprint reader
- 13. Trackpad
- 14. Power connector
- 15. Thunderbolt™ 3 connectors (USB-C™)
- 16. USB-C (3.2 Gen 1) connector
- 17. Ethernet connector
- 18. TrackPoint® buttons
- 19. Audio connector
- \* 20. Nano-SIM-card slot
- 21. Always On USB 3.2 connector Gen 1
- 22. HDMI™ connector
- 23. TrackPoint pointing stick
- 24. Speaker
- \* 25. Multi-touch screen

 Read the statement on USB transfer rate in the *User Guide*. Refer to the *Safety and Warranty Guide* for accessing the *User Guide*.

# Additional information

Yderligere oplysninger | Lisätietoja | Ytterligere informasjon | Ytterligere information

## European Union – compliance with the Radio Equipment Directive

Hereby, Lenovo (Singapore) Pte. Ltd., declares that the radio equipment type ThinkPad P15 Gen 1 / ThinkPad T15g Gen 1 is in compliance with Directive 2014/53/EU.

The full text of the system EU declaration of conformity is available at the following Internet address:

<https://www.lenovo.com/us/en/compliance/eu-doc>

This radio equipment operates with the following frequency bands and maximum radio-frequency power:

Technology	Frequency band [MHz]	Maximum transmit power
WLAN 802.11b/g/n/ax	2400 - 2483.5	< 20 dBm
WLAN 802.11a/n/ac/ax	5150 - 5725	< 23 dBm
WLAN 802.11a/n/ac/ax	5725 - 5875	< 13.98 dBm
Bluetooth BR/EDR/LE	2400 - 2483.5	< 20 dBm
WWAN UMTS	1/8	< 24.5 dBm
WWAN LTE	1/3/7/8/20/28	< 24 dBm
WWAN LTE	38/40/42	< 24 dBm

Usage of all the radio devices is limited to indoor in the band 5150 MHz to 5350 MHz (channels 36, 40, 44, 48, 52, 56, 60, 64).

# E-manual

---

E-vejledning | Sähköinen käyttöopas | Elektronisk håndbok | E-handbok



---

**Second Edition (August 2020)**

**© Copyright Lenovo 2020.**

LIMITED AND RESTRICTED RIGHTS NOTICE: If data or software is delivered pursuant to a General Services Administration "GSA" contract, use, reproduction, or disclosure is subject to restrictions set forth in Contract No. GS-35F-05925.

**Reduce | Reuse | Recycle**

