

HP EliteDesk 705 G5 Desktop Mini PC



Power and versatility in an enterprise-class AMD-based Mini

Experience our most powerful AMD based USFF business-class desktop PC. The high-performance HP EliteDesk 705 Desktop Mini, with many configurable options, has built-in security and manageability in a compact design that fits your modern workplace and pairs with the HP Mini-in-One 24 Display.³



HP recommends Windows 10 Pro for business

- Windows 10 Pro¹
- HP Sure Start Gen5 for AMD²

A Mini PC in size only

- Power through your busy day with the latest gen AMD Ryzen™ PRO processors⁴ and options like discrete AMD Radeon™ graphics^{5,6}, dual M.2 NVMe SSDs with RAID⁵, Wi-Fi 6 (802.11ax)^{5,7}, and up to 64 GB memory.⁵ See every detail on up to 7 displays.⁸

Build a universe around your Mini

- Install your Mini securely inside an HP Mini-in-One 24 Display³ or attach behind an HP EliteDisplay⁹—and power through USB-C™.¹⁰ Mount¹¹ with space-saving HP accessories.⁵ Streamline cabling with USB-C™ or optional HP Power Supply Holder.⁵

Enhanced security and manageability

- Get a PC reinforced by HP Sure Start for AMD², HP Sure Run¹², HP Manageability Integration Kit¹³, Microsoft System Center Configuration Manager, and HP Sure Sense.¹⁴ Make device management easy with AMD DASH and support for KVM (BIOS).
- Be productive in any situation with Windows 10 Pro and powerful security, collaboration, and connectivity features from HP.
- Customize your Mini solution with a range of exclusive accessories designed to simplify display, wall, and rack mounting and securing your PC and its power supply.
- HP Sure Sense uses the power of deep learning AI to identify and quarantine never-before-seen attacks, helping prevent infections before they happen.
- Firmware attacks can completely devastate your PC—stay protected with HP Sure Start for AMD self-healing BIOS.
- To get control of your PC, attackers first need to take down its defenses. Keep critical security protections up and running with HP Sure Run Gen2.
- The HP Manageability Integration Kit helps speed up image creation and management of hardware, BIOS, and security through Microsoft System Center Configuration Manager.
- Advanced malware can seriously disrupt your business. HP Sure Recover Gen2 ensures fast, secure, and automated recovery with only a network connection.
- Help protect your PC from websites and attachments with malware, ransomware or viruses with hardware-enforced security from HP Sure Click.
- Simplify securing your PC. HP Client Security Manager offers a single interface to set up and manage your PC's powerful security features.
- Rest easy with a reliable PC that goes the distance, is designed to pass 120,000 hours of HP Total Test Process, and undergoes MIL-STD 810G testing.
- Easily connect your third-party audio and video and control system peripherals for a great conference room experience.

HP EliteDesk 705 G5 Desktop Mini PC Specifications Table

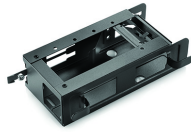


Available Operating Systems	Windows 10 Pro 64 – HP recommends Windows 10 Pro for business ¹ Windows 10 Home 64 ¹ Windows 10 Home Single Language 64 ¹ FreeDOS
Processor family ³⁴	AMD Athlon™ PRO processor; AMD Ryzen™ 3 PRO processor; AMD Ryzen™ 5 PRO processor
Available Processors ^{3,35}	AMD Athlon™ PRO 300GE APU with Radeon™ Vega 3 Graphics (3.4 GHz base clock, 192 KB L1 cache, 1 MB L2 cache, 4 MB L3 cache, 2 cores); AMD Ryzen™ 3 PRO 3200G with Radeon™ Vega 8 Graphics (3.6 GHz base clock, up to 4 GHz max boost clock, 384 KB L1 cache, 2 MB L2 cache, 4 MB L3 cache, 4 cores); AMD Ryzen™ 3 PRO 3200GE with Radeon™ Vega 8 Graphics (3.3 GHz base clock, up to 3.8 GHz max boost clock, 384 KB L1 cache, 2 MB L2 cache, 4 MB L3 cache, 4 cores); AMD Ryzen™ 5 PRO 3400G with Radeon™ Vega 11 Graphics (3.7 GHz base clock, up to 4.2 GHz max boost clock, 384 KB L1 cache, 2 MB L2 cache, 4 MB L3 cache, 4 cores); AMD Ryzen™ 5 PRO 3400GE with Radeon™ Vega 11 Graphics (3.3 GHz base clock, up to 4 GHz max boost clock, 384 KB L1 cache, 2 MB L2 cache, 4 MB L3 cache, 4 cores)
Chipset	AMD PRO 560
Form factor	Mini
Maximum memory	64 GB DDR4-2666 SDRAM ⁴ Transfer rates up to 2666 MT/s.
Memory slots	2 SODIMM
Internal storage	500 GB up to 1 TB 7200 rpm SATA ⁵ up to 500 GB 7200 rpm SATA SED Opal z ⁵ 256 GB up to 512 GB PCIe® NVMe™ M.2 SSD ⁵ 128 GB up to 1 TB PCIe® NVMe™ TLC M.2 SSD ⁵ 256 GB up to 512 GB PCIe® NVMe™ SED Opal 2 TLC M.2 SSD ⁵
Available Graphics	Integrated: AMD Radeon™ Vega 11 Graphics; AMD Radeon™ Vega 3 Graphics; AMD Radeon™ Vega 8 Graphics Discrete: AMD Radeon™ RX 560X Graphics (4 GB GDDR5 dedicated) ^{14,15,39}
Audio	Conexant CX20632 codec, universal audio jack, headset and headphone front ports (3.5 mm), multi-streaming capable
Expansion slots	1 M.2 2230; 2 M.2 2230/2280 (1 M.2 slot for WLAN and 2 M.2 2230/2280 slots for storage.)
Ports and Connectors	Front: 1 headphone; 1 headset connector; 1 USB 3.1 Gen 1; 1 USB 3.1 Gen 1 (charging); 1 USB 3.1 Type-C™ Gen 2 (charging) Rear: 1 external antenna connector; 1 power connector; 1 RJ-45; 2 DisplayPort™ 1.2; 4 USB 3.1 Gen 1 Optional: 1 DisplayPort™ 1.2; 1 HDMI 2.0; 1 serial; 1 USB 3.1 Type-C™ Gen 2 (100W Power Delivery, DisplayPort™); 1 USB 3.1 Type-C™ Gen 2 (DisplayPort™); 1 VGA ^{6,9,10,11,12,13,36}
Input devices	HP USB Business Slim Keyboard; HP USB Smart Card (CCID) Keyboard; HP Wireless Business Slim Keyboard and Mouse Combo ^{16,17} ; HP USB 1000 dpi Laser Mouse; HP USB Optical Mouse; HP USB Fingerprint Mouse ^{16,17} ;
Communications	LAN: Realtek RTL8111 EPH GbE ; WLAN: Intel® Wi-Fi 6 AX200 (2x2) and Bluetooth® M.2 Combo Card non-vPro™; Intel® Dual Band Wireless-AC Wi-Fi 5 9260 (2x2) and Bluetooth® 5 M.2, non-vPro™ ^{7,8,38} ;
Environmental	Operating temperature: 10 to 35°C; Operating humidity: 10 to 90% RH
Available Software	Absolute Persistence module; Buy Office (sold separately); HP Hotkey Support; HP JumpStarts; HP Noise Cancellation Software; HP Support Assistant ^{18,19}
Security management	Drivelock; Hood sensor; HP BIOSphere Gen5; HP Client Security Suite Gen 5; HP Power On Authentication; HP Sure Click; HP Sure Recover Gen2; HP Sure Run Gen2; HP Sure Start for AMD; Master Boot Record Security; Power-on password (via BIOS); Pre-boot Authentication; RAID configurations; SATA port disablement (via BIOS); Serial enable/disable (via BIOS); Setup password (via BIOS); Support for chassis padlocks and cable lock devices; Trusted Platform Module TPM 2.0 Embedded Security Chip shipped with Windows 10 (Common Criteria EAL4+ Certified)(FIPS 140-2 Level 2 Certified); USB enable/disable and boot control (via BIOS) ^{24,25,26,27,28,29,30}
Management features	AMD DASH technology capable; HP BIOS Config Utility (download); HP Client Catalog (download); HP Cloud Recovery; HP Driver Packs (download); HP Image Assistant Gen 4; HP Management Integration Kit for Microsoft System Center Configuration Management Gen 3; HP System Software Manager (download); Ivanti Management Suite ^{20,21,22,23,37}
Power	150 W external power adapter, up to 89% efficiency, active PFC; 65 W external power adapter, up to 89% efficiency, active PFC; 90 W external power adapter, up to 89% efficiency, active PFC ³¹
Dimensions	17.7 x 17.5 x 3.4 cm
Weight	1.26 kg (Exact weight depends on configuration.)
Ergonomic features	##displaytiltswiv##
Energy efficiency compliance	ENERGY STAR® certified; EPEAT® 2019 registered where applicable ³²
Environmental specifications	Low halogen ³³
Warranty	3 year (3-3-3) limited warranty and service offering includes 3 years of parts, labor and on-site repair. Terms and conditions vary by country. Certain restrictions and exclusions apply.

HP EliteDesk 705 G5 Desktop Mini PC

Accessories and services (not included)

HP DM VESA Power Supply Holder Kit



Simplify cable management when mounting your HP Desktop Mini with the HP DM VESA Power Supply Holder Kit, which attaches to your HP Desktop Mini Security/Dual VESA Sleeve v2 (2JA32AA) to reduce cable clutter from the PC's power supply cable and brick. Proven performance and reliability to deliver maximum investment protection. Offering the perfect combination of performance, reliability and investment protection to any IT environment. For businesses that require superior stability and manageability with low lifecycle costs, or desktops with proven technology, superior price/performance and a wide choice of features, or even entry-level PCs that balance price and essential computing capabilities – the HP Desktop family holds the solution.
Product number: 1RL87AA

HP B300 PC Mounting Bracket



Customize an altogether better solution with the HP B300 PC Mounting Bracket, which lets you attach your HP Workstation, HP Desktop Mini, HP Chromebox or select HP Thin Client directly behind select 2017 and 2018 HP EliteDisplays and HP Z Displays.¹ Customize an altogether better solution with the HP B300 PC Mounting Bracket, which lets you attach your HP Workstation, HP Desktop Mini, HP Chromebox or select HP Thin Client directly behind select 2017 and 2018 HP EliteDisplays and HP Z Displays.¹ Offering the perfect combination of performance, reliability and investment protection to any IT environment. For businesses that require superior stability and manageability with low lifecycle costs, or desktops with proven technology, superior price/performance and a wide choice of features, or even entry-level PCs that balance price and essential computing capabilities – the HP Desktop family holds the solution.
Product number: 2DW53AA

HP Desktop Mini Security/Dual VESA Sleeve v2



Wrap your HP Desktop Mini PC in the HP Desktop Mini Security/Dual VESA Sleeve v2 to securely mount it—with or without an Expansion Module¹—behind your display, position the solution on a wall, and lock it down with the integrated security bracket and optional HP Ultra-Slim Cable Lock. Wrap your HP Desktop Mini PC in the HP Desktop Mini Security/Dual VESA Sleeve v2 to securely mount it—with or without an Expansion Module¹—behind your display, position the solution on a wall, and lock it down with the integrated security bracket and optional HP Ultra-Slim Cable Lock. Offering the perfect combination of performance, reliability and investment protection to any IT environment. For businesses that require superior stability and manageability with low lifecycle costs, or desktops with proven technology, superior price/performance and a wide choice of features, or even entry-level PCs that balance price and essential computing capabilities – the HP Desktop family holds the solution.
Product number: 2JA32AA

HP Wireless Slim Business Keyboard



Enjoy easy data entry and wireless connectivity with the HP Wireless Business Slim Keyboard, designed to complement the 2015 class of HP Business PCs. Enjoy easy data entry and wireless connectivity with the HP Wireless Business Slim Keyboard, designed to complement the 2015 class of HP Business PCs. Offering the perfect combination of performance, reliability and investment protection to any IT environment. For businesses that require superior stability and manageability with low lifecycle costs, or desktops with proven technology, superior price/performance and a wide choice of features, or even entry-level PCs that balance price and essential computing capabilities – the HP Desktop family holds the solution.
Product number: N3R88AA

HP Keyed Cable Lock 10 mm



Help keep your notebook safe in the office and high-traffic areas by tethering it to a secure surface with the HP Master Keyed Cable Lock 10mm, designed specifically for ultra-thin profile notebooks. Help keep your notebook safe in the office and high-traffic areas by tethering it to a secure surface with the HP Master Keyed Cable Lock 10mm, designed specifically for ultra-thin profile notebooks. Offering the perfect combination of performance, reliability and investment protection to any IT environment. For businesses that require superior stability and manageability with low lifecycle costs, or desktops with proven technology, superior price/performance and a wide choice of features, or even entry-level PCs that balance price and essential computing capabilities – the HP Desktop family holds the solution.
Product number: T1A62AA

HP 5 year Next Business Day Onsite Hardware Support for Desktops



Receive 5 years of next business day onsite HW Support from an HP-qualified technician for your computing device, if the issue cannot be solved remotely.
Product number: U7899E

HP EliteDesk 705 G5 Desktop Mini PC

Messaging Footnotes

- ¹ Not all features are available in all editions or versions of Windows. Systems may require upgraded and/or separately purchased hardware, drivers, software or BIOS update to take full advantage of Windows functionality. Windows 10 is automatically updated, which is always enabled. ISP fees may apply and additional requirements may apply over time for updates. See <http://www.windows.com>.
- ² HP Sure Start for AMD is available on select HP PCs with AMD processors. See product specifications for availability.
- ³ HP Mini-in-One 24 Display sold separately. PC must be configured with optional USB-C™ with 100W Power Delivery card.
- ⁴ Multi-core is designed to improve performance of certain software products. Not all customers or software applications will necessarily benefit from use of this technology. Performance and clock frequency will vary depending on application workload and your hardware and software configurations. AMD's numbering is not a measurement of clock speed.
- ⁵ Sold separately or as a configurable option.
- ⁶ Only available on 35W processor model.
- ⁷ Wireless access point and Internet service required and sold separately. Availability of public wireless access points limited. Wi-Fi 6 is backwards compatible with prior 802.11 specs. The specifications for Wi-Fi 6 (802.11ax) are draft and are not final. If the final specifications differ from the draft specifications, it may affect the ability of the PC to communicate with other 802.11ax devices.
- ⁸ Daisy chaining of 7 displays is only supported on 35W processor model configured with an optional AMD Radeon™ RX 560 graphics card. A PC configured with the AMD Radeon™ RX 560 cannot be configured with any other optional I/O.
- ⁹ Display sold separately. See display data sheet on hp.com for mounting bracket guidance.
- ¹⁰ Select HP EliteDisplays support USB-C™ Power Delivery. See display data sheet on hp.com for guidance. PC must be configured with optional USB-C™ with 100W Power Delivery card.
- ¹¹ Mounting hardware sold separately.
- ¹² See product specifications for availability.
- ¹³ HP Manageability Integration Kit can be downloaded from <http://www.hp.com/go/clientmanagement>.
- ¹⁴ HP Sure Sense requires Windows 10. See product specifications for availability.
- ¹⁵ See product specifications for availability. Requires an open, wired network connection. Not available on platforms with multiple internal storage drives. You must back up important files, data, photos, videos, etc. before using HP Sure Recover to avoid loss of data.
- ¹⁶ HP Sure Click is available on select HP platforms and supports Microsoft Internet Explorer, Google Chrome™, and Chromium™. Supported attachments include Microsoft Office (Word, Excel, PowerPoint) and PDF files in read-only mode, when Microsoft Office or Adobe Acrobat are installed.
- ¹⁷ HP Client Security Manager Gen5 requires Windows and is available on select HP Pro and Elite PCs. See product specifications for details.
- ¹⁸ HP Total Test Process testing is not a guarantee of future performance under these test conditions. Accidental damage requires an optional HP Accidental Damage Protection Care Pack.
- ¹⁹ MIL-STD testing is not intended to demonstrate fitness for U.S. Department of Defense contract requirements or for military use. Test results are not a guarantee of future performance under these test conditions. Accidental damage requires an optional HP Accidental Damage Protection Care Pack.

Technical Specifications Footnotes

- ¹ Not all features are available in all editions or versions of Windows. Systems may require upgraded and/or separately purchased hardware, drivers, software or BIOS update to take full advantage of Windows functionality. Windows 10 is automatically updated, which is always enabled. ISP fees may apply and additional requirements may apply over time for updates. See <http://www.windows.com>.
- ² Multi-core is designed to improve performance of certain software products. Not all customers or software applications will necessarily benefit from use of this technology. Performance and clock frequency will vary depending on application workload and your hardware and software configurations. AMD's numbering is not a measurement of clock speed.
- ³ Actual transfer rate will vary and is determined by the system's configured processor. See processor specifications for supported memory data rate. All memory slots are customer accessible / upgradeable.
- ⁴ For hard drives and solid state drives, GB = 1 billion bytes, TB = 1 trillion bytes. Actual formatted capacity is less. Up to 36 GB (for Windows 10) of system disk is reserved for the system recovery software.
- ⁵ Only one option card can be configured at a time.
- ⁶ Intel® Dual Band Wireless-AC Wi-Fi 5 8265 (2x2) and Bluetooth® Combo, card non-vPro™: not available in all regions.
- ⁷ Wireless access point and internet service required and sold separately. Availability of public wireless access points limited. Wi-Fi 6 is backwards compatible with prior 802.11 specs. The specifications for Wi-Fi 6 (802.11ax) are draft and are not final. If the final specifications differ from the draft specifications, it may affect the ability of the notebook to communicate with other 802.11ax devices. Only available in countries where 802.11ax is supported.
- ⁸ Sold separately or as an optional feature.
- ⁹ Availability depends on model.
- ¹⁰ DisplayPort™ 1.4 is a discrete graphics port and requires AMD Radeon™ RX 560 Graphics card installed.
- ¹¹ Discrete graphics only available on 35W models.
- ¹² USB-C™ Alt mode DisplayPort™ 1.2 with 100W Power Delivery required for HP Mini-In-One 24 Display support.
- ¹³ Sold separately or as an optional feature.
- ¹⁴ Discrete graphics only available on 35W models.
- ¹⁵ Sold separately or as an optional feature.
- ¹⁶ HP USB Business Slim Antimicrobial Keyboard; HP Business Slim Grey Keyboard; USB Antimicrobial Mouse; HP USB Hardened Mouse: Not available in all regions.
- ¹⁷ Absolute Persistence module. Absolute agent is shipped turned off, and will be activated when customers activate a purchased subscription. Subscriptions can be purchased for terms ranging multiple years. Service is limited, check with Absolute for availability outside the U.S. The Absolute Recovery Guarantee is a limited warranty. Certain conditions apply. For full details visit: <http://www.absolute.com/company/legal/agreements/computrace-agreement>. Data Delete is an optional service provided by Absolute Software. If utilized, the Recovery Guarantee is null and void. In order to use the Data Delete service, customers must first sign a Pre-Authorization Agreement and either obtain a PIN or purchase one or more RSA SecurID tokens from Absolute Software.
- ¹⁸ HP Support Assistant: requires Windows and Internet access.
- ¹⁹ Ivanti Management Suite: subscription required.
- ²⁰ HP Manageability Integration Kit can be downloaded from <http://www8.hp.com/us/en/ads/clientmanagement/overview.html>.
- ²¹ Ivanti Management Suite: subscription required.
- ²² AMD DASH support with KVM (BIOS level only).
- ²³ HP BIOSphere Gen5 is available on select HP Pro and Elite PCs. See product specifications for details. Features may vary depending on the platform and configurations.
- ²⁴ HP Client Security Manager Gen5 requires Windows and is available on the select HP Pro and Elite PCs. See product specifications for details.
- ²⁵ HP Sure Start for AMD is available on select HP PCs with AMD processors. See product specifications for availability.
- ²⁶ HP Sure Recover Gen2: See product specifications for availability. Requires an open, wired network connection. Not available on platforms with multiple internal storage drives. You must back up important files, data, photos, videos, etc. before using HP Sure Recover to avoid loss of data.
- ²⁷ HP Sure Click is available on select HP platforms and supports Microsoft Internet Explorer, Google Chrome™, and Chromium™. Supported attachments include Microsoft Office (Word, Excel, PowerPoint) and PDF files in read only mode, when Microsoft Office or Adobe Acrobat are installed.
- ²⁸ HP Drive Lock is not supported on NVMe drives.
- ²⁹ Trusted Platform Module TPM 2.0 Embedded Security Chip shipped with Windows 10 (Common Criteria EAL4+ Certified)(FIPS 140-2 Level 2 Certified): Firmware TPM is version 2.0. Hardware TPM is v1.2, which is a subset of the TPM 2.0 specification version v0.89 as implemented by Intel Platform Trust Technology (PTT).
- ³⁰ 150 W external power adapter, up to 89% efficiency, active PFC: when ordered with a discrete graphics card.
- ³¹ Based on US EPEAT® registration according to IEEE 1680.1-2018 EPEAT®. Status varies by country. Visit www.epeat.net for more information.
- ³² External power supplies, power cords, cables and peripherals are not Low Halogen. Service parts obtained after purchase may not be Low Halogen.
- ³³ NOTE: Your product does not support Windows 8 or Windows 7. In accordance with Microsoft's support policy, HP does not support the Windows 8 or Windows 7 operating system on products configured with Intel® and AMD 7th generation and forward processors or provide any Windows 8 or Windows 7 drivers on <http://www.support.hp.com>
- ³⁴ Max Boost clock frequency performance varies depending on hardware, software and overall system configuration.
- ³⁵ For models with discrete graphics: 1 DisplayPort™ 1.4.
- ³⁶ HP Cloud Recovery is available for HP Elite and Pro desktops and laptops PCs with Intel® or AMD processors and requires an open, wired network connection. Note: You must back up important files, data, photos, videos, etc. before use to avoid loss of data. Detail please refer to: <https://support.hp.com/us-en/document/c05115630>.
- ³⁷ Wireless access point and internet service required and sold separately. Availability of public wireless access points limited. Wi-Fi 5 (802.11ac) is backwards compatible with prior 802.11 specs.
- ³⁸ As of 2019, AMD Radeon™ RX 560 is renamed to AMD Radeon™ RX 560X.

Sign up for updates hp.com/go/getupdated

© Copyright 2019 HP Development Company, L.P. The information contained herein is subject to change without notice. The only warranties for HP products and services are set forth in the express warranty statements accompanying such products and services. Nothing herein should be construed as constituting an additional warranty. HP shall not be liable for technical or editorial errors or omissions contained herein.

Bluetooth is a trademark of its proprietor and used by HP Inc. under license. USB Type-C™ and USB-C™ are trademarks of USB Implementers Forum. DisplayPort™ and the DisplayPort™ logo are trademarks owned by the Video Electronics Standards Association (VESA®) in the United States and other countries. AMD, Radeon, Ryzen, Athlon, and the AMD logo are trademarks of Advanced Micro Devices, Inc. ENERGY STAR and the ENERGY STAR mark are registered trademarks owned by the U.S. Environmental Protection Agency. Intel and vPro are trademarks of Intel Corporation in the U.S. and other countries. All other trademarks are the property of their respective owners.

