



motorola



# USER'S GUIDE

**Wi-Fi® Home Video Camera**

**Models: FOCUS85-B, FOCUS85-S, FOCUS85-W**

*The features described in this user's guide are subject to modifications without prior notice.*

# Welcome...

*to your new Motorola Wi-Fi® Home Video Camera!*

Thank you for purchasing your new Motorola Wi-Fi® Home Video Camera. If you have always wondered what happens when you are away, wonder no more. Now you can monitor your children, pets or property with this easy to use system. You can install the Camera only from your iPhone®/iPad® or devices for Android™ and view the Camera video from your PC or Notebook, as well as devices for Android™ or iPhone®/iPad®.

Please keep your original dated sales receipt for your records. For warranty service of your Motorola product, you will need to provide a copy of your dated sales receipt to confirm warranty status. Registration is not required for warranty coverage.

For product related questions, please call:

US and Canada 1-888-331-3383  
Email: [support@motorolamonitors.com](mailto:support@motorolamonitors.com)

---

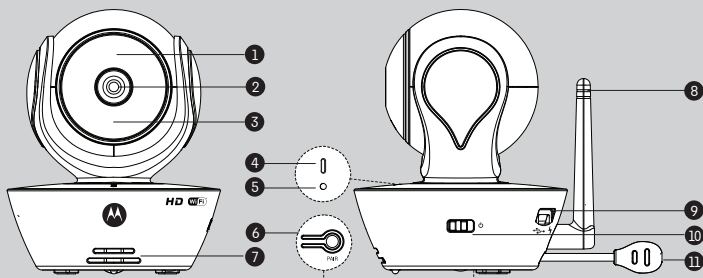
This User's Guide has all the information you need to make the most out of your product.

Please read the Safety Instructions on pages 5 - 6 before you install the unit.

## **Inside the Box**

- 1 x Wi-Fi® Camera Unit
- 1 x Power Adapter
- 1 x Quick Start Guide
- 1 x User Guide

## Overview of your Camera



1. Light Sensor (for night mode detection)
2. Camera Lens
3. Infrared LEDs (for night vision)
4. Power / Status indicator
5. Microphone

6. PAIR Button
7. Speaker
8. Antenna
9. Micro USB socket
10. ON/OFF Switch
11. Temperature Sensor

### Important guidelines for installing your Wi-Fi® Camera Unit

- Use of other 2.4 GHz products, such as other wireless networks, Bluetooth® systems or microwave ovens may cause interference with this product. Keep the Wi-Fi® Camera Unit away from these types of products, or turn them off if they appear to be causing interference.
- Always ensure that you have a good Wi-Fi® connection available.



## Table of contents

|  |           |
|--|-----------|
| <b>1. Safety Instructions .....</b>                                    | <b>5</b>  |
| <b>2. System Requirements .....</b>                                    | <b>7</b>  |
| <b>3. Getting started - Connecting Devices.....</b>                    | <b>8</b>  |
| 3.1 Setup.....   | 8         |
| 3.2 User Account and Camera Setup on Android™ Devices.....             | 9         |
| 3.2.1 Power on and connect the FOCUS85 camera .....                    | 9         |
| 3.2.2 Download the Hubble for Motorola Monitors application .....      | 9         |
| 3.2.3 Run Hubble for Motorola Monitors App on Android™ device .....    | 10        |
| 3.2.4 Add FOCUS85 Camera to your account .....                         | 11        |
| 3.3 User Account and Camera Setup:<br>Working with iPhone®/iPad® ..... | 15        |
| 3.3.1 Power ON and Connect FOCUS85 camera .....                        | 15        |
| 3.3.2 Download Hubble for Motorola Monitors App .....                  | 15        |
| 3.3.3 Run Hubble for Motorola Monitors on your iPhone®/iPad® ...       | 16        |
| 3.3.4 Add FOCUS85 Camera to your account .....                         | 17        |
| <b>4. Camera .....</b>   | <b>22</b> |
| 4.1 Connecting the Camera to Power.....                                | 22        |
| 4.2 Camera Functions:<br>Working with devices for Android™ .....       | 22        |
| 4.2.1 Add more cameras .....   | 22        |
| 4.2.2 Remove a camera .....  | 24        |
| 4.2.3 Change your Account Information .....                            | 25        |
| 4.2.4 Camera settings .....  | 26        |
| 4.2.5 General setting .....  | 27        |
| 4.2.6 Features of Hubble for Motorola Monitors Application .....       | 28        |
| 4.3 Camera Functions:<br>Working with devices for iPhone®/iPad® .....  | 33        |
| 4.3.1 Add more cameras .....   | 33        |
| 4.3.2 Remove a camera .....  | 34        |
| 4.3.3 Change your Account Information .....                            | 35        |
| 4.3.4 Camera settings .....  | 36        |
| 4.3.5 General settings .....   | 36        |
| 4.3.6 Hubble for Motorola Monitors Settings .....                      | 38        |
| 4.3.7 Features of the Hubble for Motorola Monitors Application ....    | 39        |
| 4.4 Camera Functions:<br>Working with PC/Notebook .....                | 43        |
| <b>5. Procedure for resetting the Camera.....</b>                      | <b>44</b> |
| <b>6. Help.....</b>  | <b>45</b> |
| <b>7. General Information .....</b>                                    | <b>52</b> |
| <b>8. Technical Specifications .....</b>                               | <b>57</b> |

# 1. Safety Instructions



## WARNING:

**STRANGULATION HAZARD** - In case this unit is being used to monitor infants or children, keep the unit and adapter cord more than 3 feet from the cot and out of their reach. Never place camera or cords within a crib or near a bed. Secure the cord away from children's reach. Never use extension cords with AC Adapters. Only use the AC Adapters provided.

As with any electrical device, supervision of your pet's usage should be exercised until your pet is acclimated to the product. If your pet is prone to chewing, we strongly recommend you keep this and all other electrical devices out of its reach.

---

## Wi-Fi® CAMERA UNIT SET UP & USE:

---

- Determine a location for the Wi-Fi® Camera Unit that will provide the best view of your baby in the crib.
- Place the Wi-Fi® Camera Unit on a flat surface, such as a chest of drawers, desk, shelf or wall-mount it using the keyhole slot in the camera base.
- NEVER place the Wi-Fi® Camera Unit or cords within the crib.

**WARNING**

*This Wi-Fi<sup>®</sup> Camera Unit is compliant with all relevant electromagnetic field standards and is, when handled as described in the User's Guide, safe to use. Therefore, always read the instructions in this User's Guide carefully before using the device.*

- Adult assembly is required due to small parts. Keep all small parts away from children.
- This product is not a toy. Do not allow children to play with it.
- This Wi-Fi<sup>®</sup> Camera Unit is not a substitute for responsible adult supervision.
- Keep this user's guide for future reference.
- Do not place the Wi-Fi<sup>®</sup> Camera Unit or cords in the crib or within reach of the baby (the unit should be at least 3 feet away).
- Keep the cords out of reach of children.
- Do not cover the Wi-Fi<sup>®</sup> Camera Unit with a towel or blanket.
- Test the Wi-Fi<sup>®</sup> Camera Unit and all its functions so that you are familiar with it prior to use.
- Do not use the Wi-Fi<sup>®</sup> Camera Unit near water.
- Do not install the Wi-Fi<sup>®</sup> Camera Unit near a heat source.
- Only use the power adapter provided. Do not use other power adapters as this may damage the device.
- Never use extension cords with power adapters.
- Do not touch the plug contacts with sharp or metal objects.

## 2. System Requirements

### Web Portal

- Windows<sup>®</sup> systems, 7 or 8 (Java browser plug-in needed)
- Mac OS<sup>®</sup> version 10.7 or above
- Internet Explorer<sup>®</sup> version 8.0 or above
- Firefox<sup>®</sup> version 11.0 or above
- Chrome<sup>™</sup> version 18.0 or above
- Safari<sup>®</sup> version 5.1 or above
- Java<sup>™</sup> version 7 or above

### Android<sup>™</sup> System

- Version 4.0 or above

### iPhone<sup>®</sup>/iPad<sup>®</sup> iOS

- Version 7.0 or above

## 3. Getting started - Connecting Devices

### How does it work?



When a user tries to access the Camera, our secure server authenticates the user's identity and permits access to the Camera.

### 3.1 Setup

Connect the Camera to the power adapter, then plug into an suitable mains power socket and make sure the power switch is in the ON position. The Camera must be within range of the Wi-Fi<sup>®</sup> router with which you want to connect it to. Make sure the password of the router is available for entering during the in-app setup process.

#### Status of LED Indication:

- Pair / Setup state: LED is red and blue and slowly flashing
- Unconnected state: LED is red and slowly flashing
- Connected state: LED is blue and always on
- Ready for connection state: LED is blue and slow flashing

**Note:** You can only setup via a compatible smartphone or tablet and not via a PC.



## 3.2 User Account and Camera Setup on Android™ Devices

### *What you need*

- FOCUS85 camera
- FOCUS85 camera power adapter
- Device with Android™ system version 4.0 or above

### **3.2.1 Power on and connect the FOCUS85 camera**

- Connect the FOCUS85 adapter to a suitable mains power socket, insert the power adapter plug into micro USB socket at back of FOCUS85 camera.
- Make sure that ON/OFF button is in the ON position.
- The camera's red LED blinks after the camera has finished booting. When you hear two 'beeps' this means the camera is ready to setup.

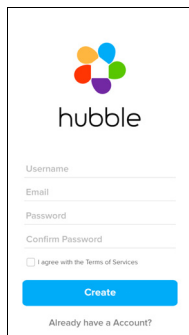
### **3.2.2 Download the Hubble for Motorola Monitors application**

- Go to the Google Play™ Store to search "Hubble for Motorola Monitors" application.
- Download Hubble for Motorola Monitors application from Google Play™ Store and install it into your Android™ device.

### 3.2.3 Run Hubble for Motorola Monitors App on Android™ device

- Ensure your Android™ device is connected to your Wi-Fi® router.
- Run Hubble for Motorola Monitors application and key in your Hubble for Motorola Monitors account information, select “I agree to the Terms of Use” before you tap on **Create**. (Picture A1)

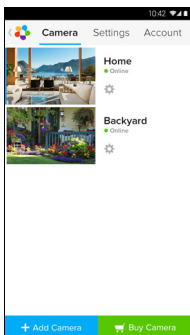
**Note:** If you have Hubble for Motorola Monitors account, please select **Already have a Account?** to go next steps.



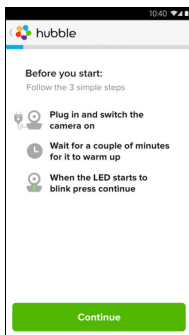
A1

### 3.2.4 Add FOCUS85 Camera to your account

- New account created and directly login.
- Tap on **Add Camera**. (Picture A2)
- Tap on **Continue**. (Picture A3)

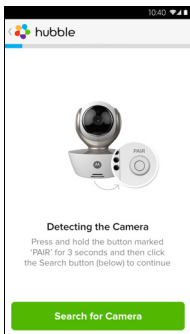


A2



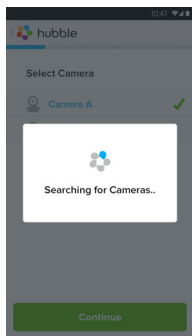
A3

- On the screen, it shows the setup instructions. (Picture A4)

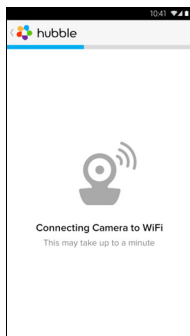


A4

- Press and hold the **PAIR** button for 3 seconds at the side of FOCUS85 camera, you will hear a Beep tone and voice “Ready to Pairing” from Camera unit, then tap on **Search for Camera**.
- The App auto searching and connecting your Camera as below pictures (A5 & A6), the Blue/Red color LED on the camera is blinking.

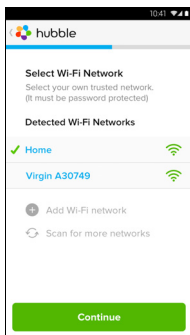


A5

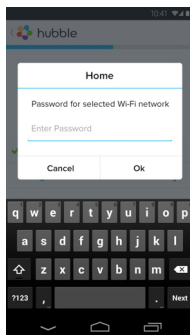


A6

- Select Wi-Fi<sup>®</sup> Network and tap Continue, enter password then tap on **Connect**. (Picture A7, A8)

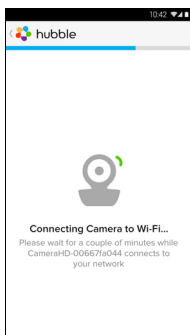


A7

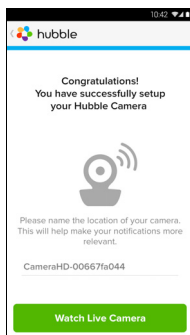


A8

- Connecting Camera to Wi-Fi<sup>®</sup> Network, it needs a few minutes to try connecting and then it will show connection result (Picture A9, A10). If connection failed, please tap on the **Retry** button and repeat the steps starting at 3.2.4.

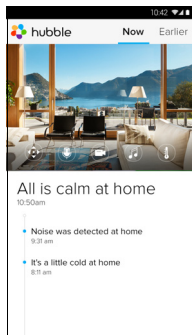


A9

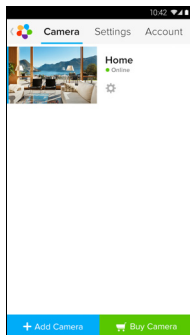


A10

- Tap on **Watch Live Camera** to view camera video, the Camera blue LED is blinking. (Picture A11)
- Tap on Hubble logo and go back to camera list. (Picture A12)



A11



A12

### 3.3 User Account and Camera Setup: Working with iPhone® / iPad®

#### *What you need*

- FOCUS85 camera
- FOCUS85 camera power adapter
- iPhone® / iPad® with iOS 7.0 version or up

#### **3.3.1 Power ON and Connect FOCUS85 camera**

- Connect FOCUS85 adapter to a suitable mains power socket, insert the plug into micro USB socket at back of FOCUS85 camera.
- Ensure ON/OFF button is pushed ON.
- Camera red LED blinks after camera booting finish, you will hear two Beep tones, it means the camera is ready to setup.

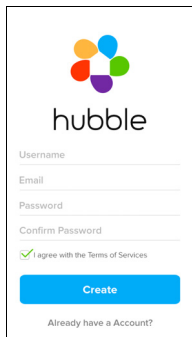
#### **3.3.2 Download Hubble for Motorola Monitors App**

- Go to App Store to search “Hubble for Motorola Monitors”.
- Download Hubble for Motorola Monitors App and install it on your iPhone® / iPad®.

### 3.3.3 Run Hubble for Motorola Monitors on your iPhone® /iPad®

- Ensure your iPhone® /iPad® is connected to your Wi-Fi® Router.
- Run Hubble for Motorola Monitors application and key in your Hubble for Motorola Monitors account information, read through the Terms of Service then select “I agree to the Terms of Service” before you tap on **Create**.  
(Picture i1)

**Note:** If you have a Hubble for Motorola Monitors account, please select **Already have a Account?** to go next steps.

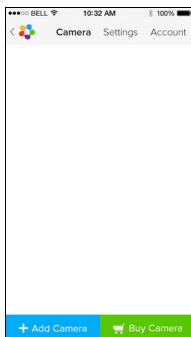


i1

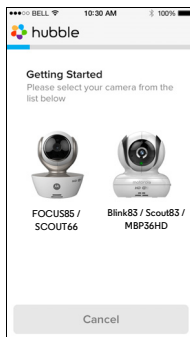


### 3.3.4 Add FOCUS85 Camera to your account

- New account created and directly login .
- Tap on **Add Camera**. (Picture i2)
- Tap on “FOCUS85”. (Picture i3)

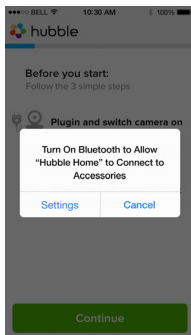


i2



i3

- Follow the instruction on screen to turn on the Bluetooth™ function of your iPhone/iPad.

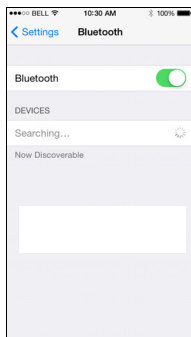


i4

- Tap on Home button, then enter the “Settings” menu to turn on the Bluetooth™ function of your iPhone/iPad.

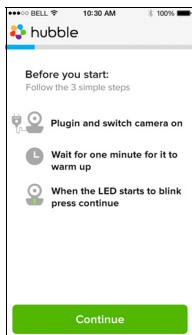


i5



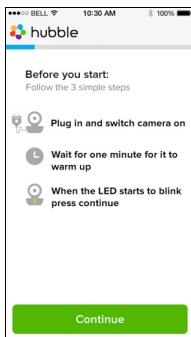
i6

- Press the HOME key to exit the Settings menu and tap on the “Hubble Home” app to enter the start up screen.

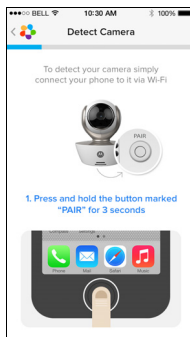


i7

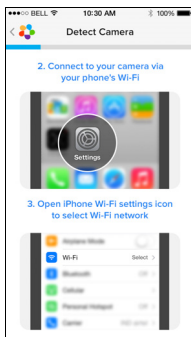
- Tap on **Continue** and follow the steps indicated as shown below. (Pictures i4-i7)



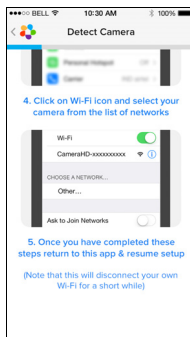
i4



i5

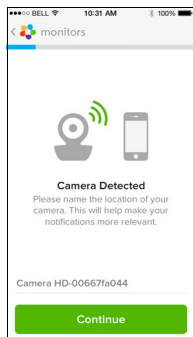


i6



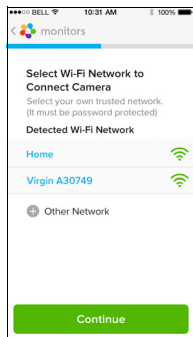
i7

- According to above steps to find current Camera ID “CameraHD-xxxxxxx”, then tap on **Continue**, ensure your iPhone® or iPad® connected it. (Picture i8)

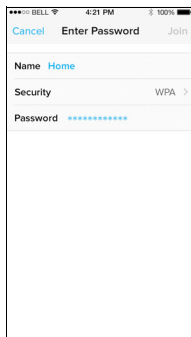


i8

- Select Wi-Fi® Network to tap **Continue** then enter password to tap Next. (Pictures i9, i10)

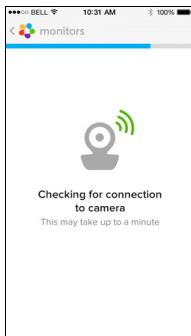


i9

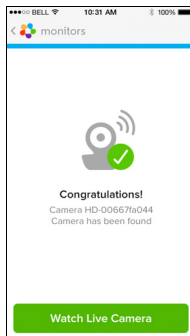


i10

- Connecting Camera to Wi-Fi®, need to wait a few minutes then see connection status as below (Pictures i11, i12), if connection fails, please tap on the **Retry** button and repeat 3.3.4 as instructed above.

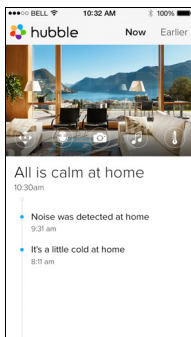


i11

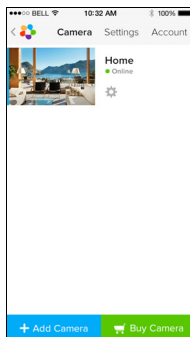


i12

- Press **Watch Live Camera** to view Camera video. (Picture i13)
- Tap on Hubble logo to go back to Camera list. (Picture i14)



i13



i14

## 4. Camera

### 4.1 Connecting the Camera to Power

- Insert the small end of the Power Adapter into the Power Adapter Connector and plug the Power Adapter into a suitable mains power socket.
- Slide the ON/OFF switch to ON, the blue Power LED will light up. (Note: To switch the device off, slide the ON/OFF switch to OFF.)

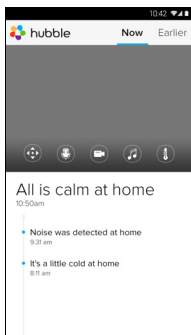
### 4.2 Camera Functions: Working with devices for Android™

- Run the Hubble for Motorola Monitors application on your Android™ device.
- The Camera view appears on the screen.

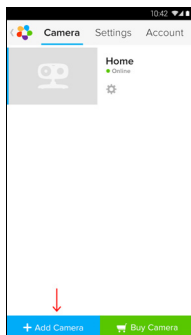
#### 4.2.1 Add more cameras

- On Camera view, tap on Hubble logo to go to **Add Camera** page. (Picture A13)
- Tap on **Add Camera** to add one more camera follow steps of Android™ device setup 3.2.4. (Picture A14)

- Once the Camera has been added, the Camera view will be automatically displayed.




A13

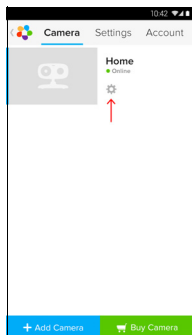


A14

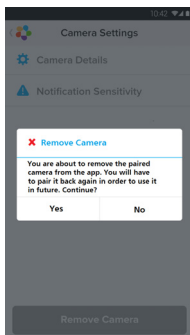
## 4.2.2 Remove a camera

You can remove a camera from your account by following these steps:

- Tap the Setting icon  on General page, then tap on **Remove Camera**. (Picture A15)
- Select **Remove** to delete the unit from camera list. (Picture A16)



A15



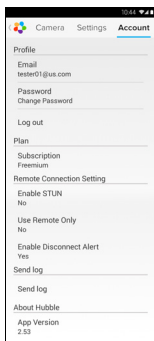
A16



## 4.2.3 Change your Account Information


You can change the account information using Android™ device.

- Tap **Account** on General page, the account setting appears on screen. (Picture A17)
- Tap on **Change Password** to change your password following the instruction.
- Tap on **Log Out** to leave the account.
- Tap on **Freemium** plan, it will go to the link of Cloud Video Recording Service, to obtain more information, please visit our website <http://www.hubbleconnected.com>.
- Tap on **Use** to access Remote Connection Setting , use Remote Only by Selecting **Yes**.
- **Enable Disconnect Alert** , when disconnect it will be "beeps" alert,enable the disconnect Alert by selecting **Yes**.
- Tap on **Send Log** to send your Hubble for Motorola Monitors Android App report to our server via e-mail; this should be sent if requested by a customer service agent.

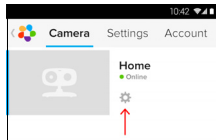


A17

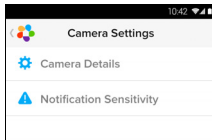
## 4.2.4 Camera settings

You can change the Camera settings by tapping the Setting icon  on the Camera page. (Picture A18)

- Tap on **Camera Details** to review **Camera Name**, **Change Image** & **Firmware version**. (Picture A19)

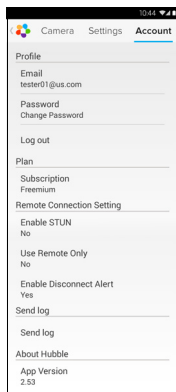


A18



A19

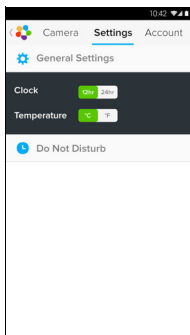
- Tap on **Notification Sensitivity** to set the sensitivity of sound & motion detection, and set Alert of High/Low temperature. (Picture A20)



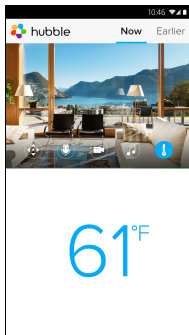
A20

## 4.2.5 General setting

- Tap **Settings** on General page.
- Tap on **General Settings** to shift the format of Clock (12hr/24hr) & **Temperature** (°C / °F). (Picture A21)



A21




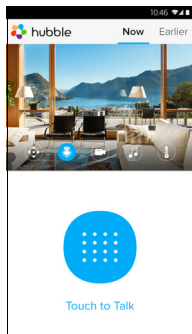
A22

- Tap on **Do Not Disturb**, set the timer which you prefer and select **ON**, the Camera will not send any sound or alert to your Android™ device in the duration of your setting. (Picture A22)

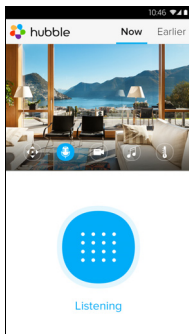
## 4.2.6 Features of Hubble for Motorola Monitors Application

On Camera view, tap the viewing area, Function Icons will appear as following,

 **Two Way Talk** – Tap on the microphone icon to turn on the talk back function to the Camera, press once the circle button to speak. Toggle again to listen from Camera. (Pictures A23, A24)



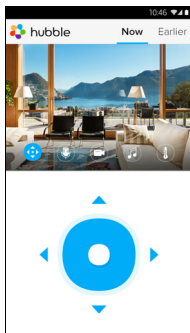
A23



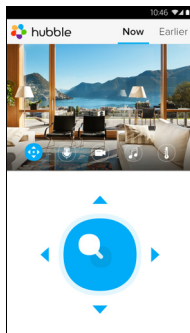
A24

## Pan and Tilt Function:

Tap the up and down buttons to tilt, the left and right buttons to pan. (Pictures A25, A26)




A25

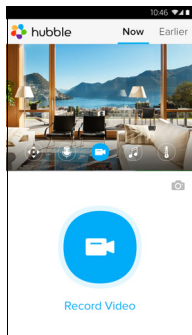


A26

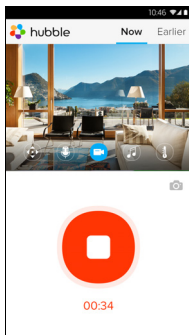
 **Photo/Video** - Take a photo or record a video from your Camera.

Tap Video icon to activate the video function and press the red dot to start and release to stop recording. (Pictures A27, A28)

Tap Camera icon  to switch to Camera mode, you can capture photos from camera view. (Picture A29)



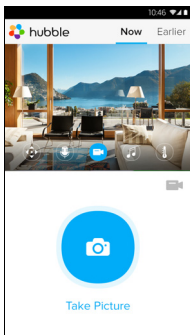
A27



A28

**Note:**

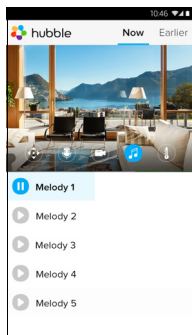
Photos and videos will be stored in the internal flash memory of your device for Android™, they can be accessed from Gallery or Media Player. To play videos, please use the “Hubble for Motorola Monitors” application or a 3rd party application, such as MX player (i.e. Google Play™ Store), which is able to play MJPG (Motionjpeg).



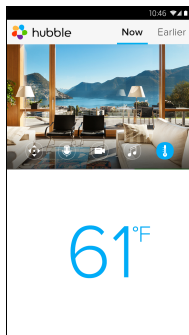
A29

**Melody** – To play one of the pre-set 5 melodies sound in system, tap on Melody to show the **Melody** menu and select one you prefer to play on your Camera. (Picture A30)

**Temperature Measure** – The temperature reading from the temperature sensor at the back of the Camera will display at your Android™ device CD screen (Picture A31). The readings will turn RED if the temperature goes out of High/Low Temperature limited which set in Account. (see section 4.2.4)



A30



A31



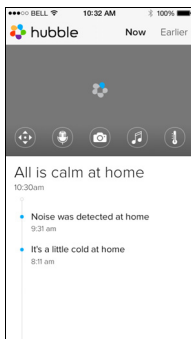
## 4.3 Camera Functions:

### Working with devices for iPhone®/iPad®

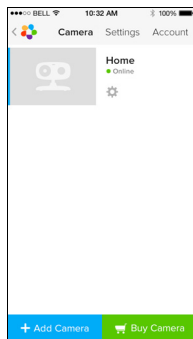
- Run the Hubble for Motorola Monitors application on your iPhone®/iPad®.
- The Camera view appears on the screen.

#### 4.3.1 Add more cameras

- On Camera view, tap on the Motorola logo to go to **Add Camera** page. (Picture i15)
- Tap on **Add Camera** to add one more camera follow steps of iPhone®/iPad® setup 3.3.4. (Picture i16)
- Once the Camera has been added, the Camera view will be automatically displayed.



i15




i16

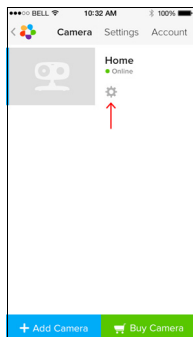
#### **Note:**

*You can ONLY add up to 4 cameras in one account.*

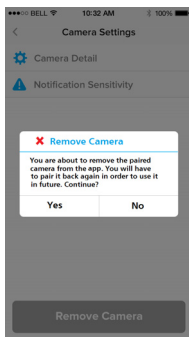
### 4.3.2 Remove a camera

You can remove a camera from your account by following these steps:

- Tap the Setting icon  on General page, then tap on **Remove Camera**. (Picture i17)
- Select **Remove** to delete the unit from camera list. (Picture i18)



i17

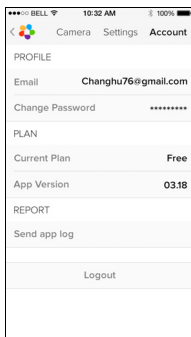


i18

### 4.3.3 Change your Account Information


You can change the account information using iPhone®/iPad®.

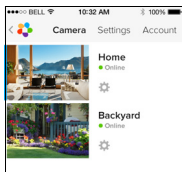
- Tap **Account** on General page, the account setting appears on screen. (Picture i19)
- Tap on **Change Password** to change your password following the instruction.
- Tap on **Log Out** to leave the account.
- Tap on **Current plan**, it will go to the link of Cloud Video Recording Service, to obtain more information, please visit our website [www.hubbleconnected.com/motorola/plans](http://www.hubbleconnected.com/motorola/plans).
- Tap on **Send app log** to send your Hubble for Motorola Monitors App report to our server via e-mail; this should be sent if requested by a customer service agent.



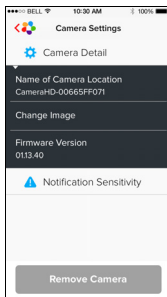
i19

### 4.3.4 Camera settings

You can change the Camera settings to tap the Setting icon  on General page (Picture i20), to review **Camera Name** and **Firmware version** (Picture i21), also you are allow to change camera name when tap on existing name following the instruction.



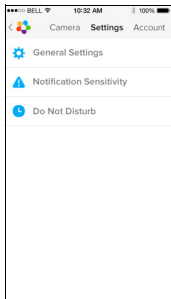
i20



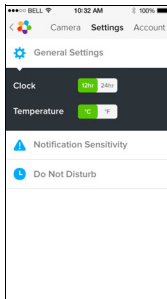
i21

### 4.3.5 General settings

- Tap **Settings** on General page. (Picture i22)
- Tap on **General Settings** to shift the format of **Clock** (12hr/24hr) & **Temperature** (°C / °F). (Picture i23)

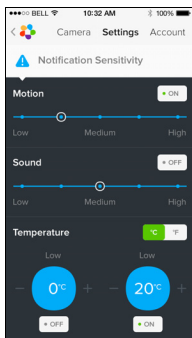


i22

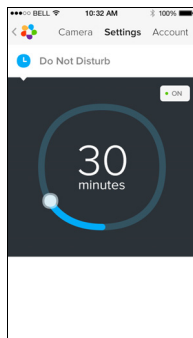


i23

- Tap on **Notification Sensitivity** to set the sensitivity of sound & motion detection, and set Alert of High/Low temperature. (Picture i24)



i24

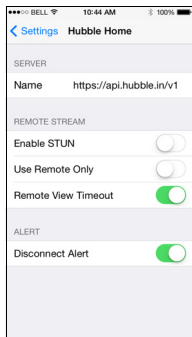


i25

- Tap on **Do Not Disturb**, set the timer which you prefer and select ON, the Camera will not send any sound or alert to your iPhone®/iPad® in the duration of your setting. (Picture i25)

### 4.3.6 Hubble for Motorola Monitors Settings


- Tap on **Settings** on your iPhone<sup>®</sup>/iPad<sup>®</sup>, and the applications will appear, tap on Hubble for Motorola Monitors App  hubble, the settings in the Hubble for Motorola Monitors app will be shown on screen. (Picture i26)

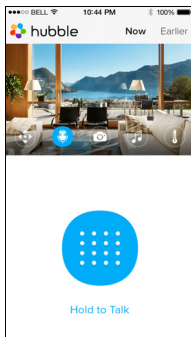


i26

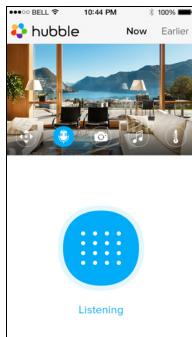
### 4.3.7 Features of the Hubble for Motorola Monitors Application

On Camera view, tap the viewing area, Function Icons will appear as following,

 **Two Way Talk** – Tap on the microphone icon to turn on the talk back function to the Camera, press once the circle button to speak. Toggle again to listen from Camera. (Pictures i27, i28)



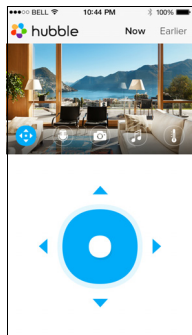
i27



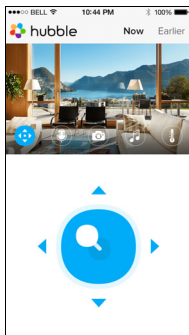
i28

## Pan and Tilt Function:

Tap the up and down buttons to tilt, the left and right buttons to pan. (Pictures i29, i30)





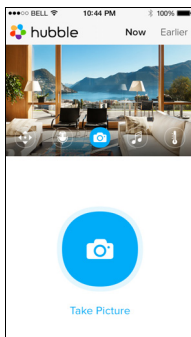
i29



i30



 **Take Picture** - Tap Camera icon  to capture photos from camera view.  
(Picture i31)



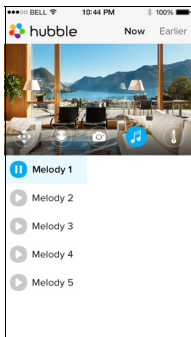
i31

**Note:**

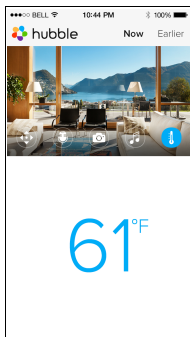
*Photos will be stored in The internal flash memory of your iPhone®/iPad®.*

**Melody** – To play one of the pre-set 5 melodies sound in system, tap on Melody to show the **Melody** menu and select one you prefer to play on your Camera. (Picture i32)

**Temperature Measure** – The temperature reading from the temperature sensor at the back of the Camera will display at your iPhone®/iPad® LCD screen (Picture i33). The readings will turn RED if the temperature goes out of High/ Low Temperature limited which set in Account. (see section 4.3.5)



i32



i33

## 4.4 Camera Functions:

### Working with PC/Notebook

- Go to URL: <http://www.hubbleconnected.com/motorola/login/>
- Enter your User Name and Password and then click Login if you have already created an account.
- Click on the Camera list paired in your account via Android™ device or iPhone®/iPad®, and the Camera view will appear on screen. You can easily stay connected with your favorite people, places and pets with live video streaming.
- At the website, you can change the settings by following the Menu instruction steps.



## 5. Procedure for resetting the Camera

**Note:** If your Camera is moved from one router (e.g. home) to another router (e.g. office) or you have Camera setup issues, then this Camera must be reset again. Please reset the Camera with the following procedure:

1. Slide the ON/OFF switch to OFF.
2. Press and hold the PAIR button on the underside of the Camera, then slide the ON/OFF switch to ON, the LED indicator turns ON.
3. Release the PAIR button and wait for the Camera to complete the internal reset procedure, you will hear beeps and the LED indicator turns off, the Camera reset successfully.
4. You can add your camera again by following the steps 5.3.4 for Android device or 5.4.4 of iOS device.

## 6. Help

### Noise interference

To avoid background noise or echoes, ensure that there is enough distance between your device and the Wi-Fi® Camera Unit.

Use of other 2.4 GHz products, such as Bluetooth® systems or microwave ovens, may cause interference with this product. Keep the Wi-Fi® Camera Unit at least 1.5m away from these types of products, or turn them off if they appear to be causing interference.

### Lost connection

Check your Wi-Fi® settings. If necessary reconnect your Wi-Fi®. Ensure the Wi-Fi® Camera Unit is switched ON. Wait a few minutes to make the connection with the Wi-Fi® system.

### If you forgot your password

If you do not remember your password, tap **Forgot password** and submit your e-mail address. A new password will be sent to your e-mail address immediately.

| Category | Problem<br>Description / Error                                   | Solution  |
|----------|--|---|
| Account  | I am unable to login even after registration.                    | Please check your user name and password.   |
| Account  | I receive an error message saying: "Email ID is not registered". | Please ensure that you have registered with us. Tap <b>Create Account</b> to create an account to be able to use the Wi-Fi® Home Video Baby Monitor Camera. |



|                     |   |  |
|---------------------|---|--|
| Account             | What do I do if I forgot my password?   | Click on the "Forgot Password" link on the <a href="http://www.hubbleconnected.com/motorola/login/">http://www.hubbleconnected.com/motorola/login/</a> website OR your Android™ or iOS application. An email will be sent to your registered email address.  |
| Account             | I am unable to receive a new password although I have used the "Forgot password" option.  | <ol style="list-style-type: none"><li>1. The e-mail might have been sent to your Junk Mail Folder. Please check your Junk Mail Folder.</li><li>2. There might be a delay in getting your e-mail. Please wait a few minutes and refresh your email account.</li></ol>   |
| Connectivity Issues | I get a message: We are having problems accessing your camera. This could be due to lack of internet connection. Please wait and try again later. | <ol style="list-style-type: none"><li>1. Please try again in a few minutes. This could be because of any issue with your internet connection.</li><li>2. If the problem remains, please restart your Camera to check if this fixes the problem.</li><li>3. Please restart your Wireless Router.</li></ol>  |
| Viewing Camera      | When I am in "remote mode", the video stops after 5 minutes. How do I view for longer?  | <p>When you are accessing your Camera via a network different from your home network (over internet) your video times out after 5 minutes.</p> <p>You can click on the Camera again from the Android™/iOS application to start streaming again.</p> <p>If you are accessing from your web-browser, then you can press on the <b>Reload</b> button to start viewing your Camera video stream again.</p> |

|                     |   |  |
|---------------------|---|--|
| Features            | The sound alert setting threshold is not right.   | You can Adjust Sound Sensitivity to trigger notifications under Camera Setting menu.   |
| Connectivity Issues | My Phone application displays the following message: "Unable to connect to BMS server". | <ol style="list-style-type: none"> <li>1. Check the Wi-Fi® network strength.</li> <li>2. Check if you are connected to the internet by starting the phone browser and going to a website like <a href="http://www.google.com">www.google.com</a>.</li> <li>3. Try again if you are successful connecting to the internet.</li> </ol> |
| Setting Up          | While I am adding a new camera to my account, I am not able to find any Cameras to add. | If you are trying to add a Camera which has previously been added into your account or another account, you will first have to reset the Camera. This can be done by pressing and holding the PAIR button at the bottom of the Camera for 5 seconds.   |
| General             | What are the supported browsers for accessing from my PC/ Mac®?                         | On PC and Mac®, we recommend to use Google Chrome. However the following browsers are also supported: PC: Internet Explorer 8 and above. Mac®: Safari.   |



|                     |  |  |
|---------------------|--|--|
| General             | What is the significance of LED flashing?  | <p>A blinking LED indicates the following status:</p> <p><u>Slow blinking:</u> 1. Your Camera is in setup mode. You can add the Camera to your account in this mode. Out of the box, the Camera is in setup mode. To reset to setup mode, press and hold the PAIR button on the bottom of the Camera until you hear a beep.</p> <p><u>Slow blinking:</u> 2. The Camera is either connecting to the router or lost the link to the router. Please ensure that the Camera is in the Wi-Fi® signal range.</p> <p><u>LED is stable:</u> The Camera is connected to the Wi-Fi® network.</p> |
| Connectivity Issues | I am not able to access my Camera.   | Please check if the Camera is within Wi-Fi® range. If the LED on your Camera is slow blinking, please try to move the Camera closer to the router for better Wi-Fi® range and try again.   |
| Setting Up          | During setup on device for Android™ and iOS, during the last step I am not able to find my Camera and the setup fails. | Please reset the Camera to setup mode and try again. Press and hold the PAIR button on the bottom of the Camera until you hear a beep. Wait for a minute for the Camera to restart. When the Camera LED is blinking, indicating that it is in setup mode. Now restart the setup from your Smartphone again.  |



|                     |   |   |
|---------------------|---|---|
| Connectivity Issues | Even though I am accessing my Camera from the same Wi-Fi® network, I still find my Camera is shown as remote. I can only access it for 5 minutes at a time. | Please check your wireless router settings. For example, in Buffalo brand routers there is an option called Wireless Isolation. Please disable this option.   |
| Camera              | When I try to view the Camera, I get a prompt for Camera firmware upgrade. What should I do?  | Please upgrade your firmware. This takes around 5 minutes. We push upgrades from time to time to improve the Camera features.   |
| General             | Which platforms are supported for accessing my Camera?  | Windows® 7*, Windows® 8*<br>*Java browser plug-in needed<br>Mac iOS version 10.7 or above<br>Internet Explorer® version 8.0 or above<br>Firefox® version 11.0 or above<br>Chrome™ version 18.0 or above<br>Safari® version 5.1 or above<br>Java™ version 7 or above<br>Android™ version 4.0 or above<br>iPhone®/iPad® iOS version 7.0 or above. |
| General             | I do not hear sound when I am accessing a remote Camera.  | You can tap on the speaker icon in the video stream screen to hear audio. By default the audio is not ON when you are accessing a remote Camera.  |



|         |  |   |
|---------|--|---|
| General | What is the meaning of "Local Camera" and "Remote Camera"? | When you are accessing your camera from the same wireless network (Home) in which it is configured, it is a local camera. When you are accessing your Camera away from your home it is a remote camera. You may be using 3G, 4G or 4G LTE or a Wi-Fi® connection outside of your home.  |
| General | How do I download the APP for Android™ and iOS devices?    | <b>Android™:</b> <ul style="list-style-type: none"><li>- Open Google Play App on your Android™ device.</li><li>- Select Search</li><li>- Type "Hubble for Motorola Monitors"</li><li>- The results will have Hubble for Motorola Monitors App by Binatone</li><li>- Select to install it.</li></ul> <b>iOS Device:</b> <ul style="list-style-type: none"><li>- Open iOS APP Store<sup>SM</sup></li><li>- Select search</li><li>- Type "Hubble for Motorola Monitors"</li><li>- The results will have Hubble for Motorola Monitors App by Binatone</li><li>- Select to install it.</li></ul> |

|                     |  |   |
|---------------------|--|---|
| Setting up          | When the video is cut off, the application attempts to reconnect and and results in lost sound and choppy video. | You will need to turn off the auto lock function of your smart device to ensure continuous video/audio feeding.   |
| Features            | How many users can access the Camera at one time?  | If you are accessing in local more, two users are supported, after two users all streaming will go through remote server. This allows for unlimited user access to a single Camera at one time. |
| Connectivity issues | I found interference caused by my other web cam devices.   | Video streaming performance is related to internet bandwidth, especially if you have 2 or more video streaming devices that are working through the same router.                                |

---

## 7. General Information

**If your product is not working properly....**

1. Read this User's Guide.
2. Contact Customer Service at:  
US and Canada 1-888-331-3383  
Email: [support@motorolamonitors.com](mailto:support@motorolamonitors.com)

### **Consumer Products and Accessories Limited Warranty ("Warranty")**

Thank you for purchasing this Motorola branded product manufactured under license by Binatone Electronics International LTD ("BINATONE").

#### ***What Does this Warranty Cover?***

Subject to the exclusions contained below, BINATONE warrants that this Motorola branded product ("Product") or certified accessory ("Accessory") sold for use with this product that it manufactured to be free from defects in materials and workmanship under normal consumer usage for the period outlined below. This Warranty is your exclusive warranty and is not transferable.

#### ***Who is covered?***

This Warranty extends only to the first consumer purchaser, and is not transferable.

#### ***What will BINATONE do?***

BINATONE or its authorised distributor at its option and within a commercially reasonable time, will at no charge repair or replace any Products or Accessories that does not conform to this Warranty. We may use functionally equivalent reconditioned/ refurbished/ pre-owned or new Products, Accessories or parts.

### ***What Other Limitations Are There?***

ANY IMPLIED WARRANTIES, INCLUDING WITHOUT LIMITATION THE IMPLIED WARRANTIES OF MERCHANTABILITY AND FITNESS FOR A PARTICULAR PURPOSE, SHALL BE LIMITED TO THE DURATION OF THIS LIMITED WARRANTY, OTHERWISE THE REPAIR OR REPLACEMENT PROVIDED UNDER THIS EXPRESS LIMITED WARRANTY IS THE EXCLUSIVE REMEDY OF THE CONSUMER, AND IS PROVIDED IN LIEU OF ALL OTHER WARRANTIES, EXPRESS OR IMPLIED. IN NO EVENT SHALL MOTOROLA OR BINATONE BE LIABLE, WHETHER IN CONTRACT OR TORT (INCLUDING NEGLIGENCE) FOR DAMAGES IN EXCESS OF THE PURCHASE PRICE OF THE PRODUCT OR ACCESSORY, OR FOR ANY INDIRECT, INCIDENTAL, SPECIAL OR CONSEQUENTIAL DAMAGES OF ANY KIND, OR LOSS OF REVENUE OR PROFITS, LOSS OF BUSINESS, LOSS OF INFORMATION OR OTHER FINANCIAL LOSS ARISING OUT OF OR IN CONNECTION WITH THE ABILITY OR INABILITY TO USE THE PRODUCTS OR ACCESSORIES TO THE FULL EXTENT THESE DAMAGES MAY BE DISCLAIMED BY LAW.

Some jurisdictions do not allow the limitation or exclusion of incidental or consequential damages, or limitation on the length of an implied warranty, so the above limitations or exclusions may not apply to you. This Warranty gives you specific legal rights, and you may also have other rights that vary from one jurisdiction to another.

| Products Covered  | Length of Coverage   |
|---|--|
| Consumer Products   | <b>One (1) year</b> from the date of the products original purchase by the first consumer purchaser of the product.              |
| Consumer Accessories  | <b>Ninety (90) days</b> from the date of the accessories original purchase by the first consumer purchaser of the product.       |
| Consumer Products and Accessories that are Repaired or Replaced | <b>The balance of the original warranty or for Ninety (90) days</b> from the date returned to the consumer, whichever is longer. |

## Exclusions

**Normal Wear and Tear.** Periodic maintenance, repair and replacement of parts due to normal wear and tear are excluded from coverage.

**Batteries.** Only batteries whose fully charged capacity falls below 80% of their rated capacity and batteries that leak are covered by this Warranty.

**Abuse & Misuse.** Defects or damage that result from: (a) improper operation, storage, misuse or abuse, accident or neglect, such as physical damage (cracks, scratches, etc.) to the surface of the product resulting from misuse; (b) contact with liquid, water, rain, extreme humidity or heavy perspiration, sand, dirt or the like, extreme heat, or food; (c) use of the Products or Accessories for commercial purposes or subjecting the Product or Accessory to abnormal usage or conditions; or (d) other acts which are not the fault of MOTOROLA or BINATONE, are excluded from coverage.

**Use of Non-Motorola branded Products and Accessories.** Defects or damage that result from the use of Non-Motorola branded or certified Products or Accessories or other peripheral equipment are excluded from coverage.

**Unauthorised Service or Modification.** Defects or damages resulting from service, testing, adjustment, installation, maintenance, alteration, or modification in any way by someone other than MOTOROLA, BINATONE or its authorised service centres, are excluded from coverage.

**Altered Products.** Products or Accessories with (a) serial numbers or date tags that have been removed, altered or obliterated; (b) broken seals or that show evidence of tampering; (c) mismatched board serial numbers; or (d) nonconforming or non-Motorola branded housings, or parts, are excluded from coverage.

**Communication Services.** Defects, damages, or the failure of Products or Accessories due to any communication service or signal you may subscribe to or use with the Products or Accessories is excluded from coverage.

### ***How to Obtain Warranty Service or Other Information?***

To obtain service or information, please call:

US and Canada 1-888-331-3383

Email: [support@motorolamonitors.com](mailto:support@motorolamonitors.com)

You will receive instructions on how to ship the Products or Accessories at your expense and risk, to a BINATONE Authorised Repair Centre.

To obtain service, you must include: (a) the Product or Accessory; (b) the original proof of purchase (receipt) which includes the date, place and seller of the Product; (c) if a warranty card was included in your box, a completed warranty card showing the serial number of the Product; (d) a written description of the problem; and, most importantly; (e) your address and telephone number.

These terms and conditions constitute the complete warranty agreement between you and BINATONE regarding the Products or Accessories purchased by you, and supersede any prior agreement or representations, including representations made in any literature publications or promotional materials issued by BINATONE or representations made by any agent employee or staff of BINATONE, that may have been made in connection with the said purchase.

## FCC and IC regulations

### FCC Part 15

**NOTE:** This equipment has been tested and found to comply with the limits for a Class B digital device, pursuant to Part 15 of the Federal Communications Commission (FCC) rules. These limits are designed to provide reasonable protection against harmful interference in a residential installation. This equipment generates, uses and can radiate radio frequency energy and, if not installed and used in accordance with the instructions, may cause harmful interference to radio communications. However, there is no guarantee that interference will not occur in a particular installation. If this equipment does cause harmful interference to radio or television reception, which can be determined by turning the equipment off and on, the user is encouraged to try to correct the interference by one or more of the following measures:

- Reorient or relocate the receiving antenna.
- Increase the separation between the equipment and receiver.
- Connect the equipment into an outlet on a circuit different from that to which the receiver is connected.
- Consult the dealer or an experienced radio/TV technician for help.

Changes or modifications to this equipment not expressly approved by the party responsible for compliance could void the user's authority to operate the equipment.

This device complies with Part 15 of the FCC rules. Operation is subject to the following two conditions: (1) this device may not cause harmful interference, and (2) this device must accept any interference received, including interference that may cause undesired operation. Privacy of communications may not be ensured when using this device.

To ensure safety of users, the FCC has established criteria for the amount of radio frequency energy that can be safely absorbed by a user or bystander according to the intended usage of the product. This product has been tested and found to comply with the FCC criteria.

This Class B digital apparatus complies with Canadian ICES-003.

CAN ICES-3(B)/NMB-3(B)



## **WARNING**

Changes or modifications, to this equipment not expressly approved by the party responsible for compliance could void the user's authority to operate the equipment.

The socket-outlet shall be installed near the equipment and shall be easily accessible.

**The Unit shall be installed and used such that parts of the user's body other than the hands are maintained at a distance of approximately 8 inches (20 cm) or more.**

## **Industry Canada**

This device complies with Industry Canada licence-exempt RSS standard(s): Operation is subject to the following Two conditions: (1) this device may not cause interference, and (2) this device must accept any interference, including interference that may cause undesired operation of the device.

The term "IC: " before the certification/registration number only signifies that the Industry Canada technical specifications were met. This product meets the applicable Industry Canada technical specifications.

Le présent appareil est conforme aux CNR d'Industrie Canada applicables aux appareils radio exempts de licence. L'exploitation est autorisée aux deux conditions suivantes : (1) l'appareil ne doit pas produire de brouillage, et (2) l'utilisateur de l'appareil doit accepter tout brouillage radioélectrique subi, même si le brouillage est susceptible d'en compromettre le fonctionnement.

## 8. Technical Specifications

### Camera Unit

|                |  |
|----------------|--|
| Wi-Fi®         | 802.11 b/g/n   |
| Image sensor   | Color CMOS 1M Pixels   |
| Lens           | f = 2.3 mm, F = 2.4  |
| IR LED         | 7 pcs  |
| Power Adapter: | Ten Pao International Ltd.<br>S009GB0500150<br>Input: 100-240Vac, 50/60Hz, 300mA<br>Output: 5Vdc, 1500mA |



motorola

Manufactured, distributed or sold by Binatone Electronics International LTD., official licensee for this product. MOTOROLA and the Stylized M logo are trademarks or registered trademarks of Motorola Trademark Holdings, LLC, and are used under license. Mac, Mac OS, iPhone, iPad and Safari are the trademarks of Apple Inc., registered in the U.S. and other countries. Android, Google Play and Chrome are trademarks of Google Inc. Wi-Fi is a trademark of the Wi-Fi Alliance. Windows XP and Internet Explorer are trademarks of the Microsoft group of companies. Oracle and Java are registered trademarks of Oracle and /or its affiliates. All other trademarks are the property of their respective owners.

© 2014 Motorola Mobility LLC.  
All rights reserved.



Version 1.0  
Printed in China