

Philips  
LCD monitor with super  
energy efficiency

### B Line

24 (23.8"/60.5 cm diag.)  
1920 x 1080 (Full HD)

242B1G



## Super energy efficient

with brilliant performance

The eco-friendly Philips 24" monitor is designed for sustainable productivity. Super-energy-efficient design delivers a new level of power savings. PowerSensor and LightSensor further reduce energy use while delivering crisp visuals.

#### Energy efficiency - Eco-conscious power savings

- Super-energy-efficient design for maximum power savings
- PowerSensor saves up to 80% energy costs
- LightSensor for the perfect brightness with minimal power
- Zero power consumption with 0 watt hard switch

#### Eco-friendly materials for sustainability

- Eco-friendly materials meet major international standards
- 100% recycled packing material
- Halogen-free design to minimise environmental impact

#### Brilliant performance

- IPS technology for full colours and wide viewing angles
- LowBlue Mode for easy-on-the-eyes productivity

#### Designed for comfortable productivity

- TUV Eye Comfort certified to reduce eye fatigue



# PHILIPS

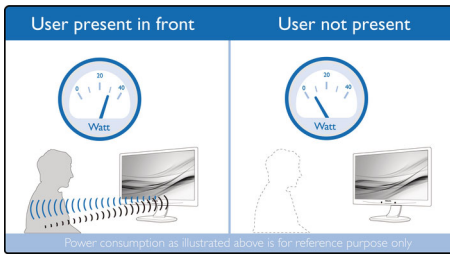
# Highlights

## Super-energy-efficient design



Using the new energy saving design with a super-efficient power supply, this monitor achieves a higher energy class, while giving excellent performance. The power-efficient feature uses new LED backlight technology which maintains brightness and colour using significantly less energy; this makes a big difference when using many monitors or even just one.

## PowerSensor



PowerSensor is a built-in 'people sensor' that transmits and receives harmless infrared signals to determine if the user is present and then automatically reduces monitor brightness when the user steps away from the desk, cutting energy costs by up to 80 percent and prolonging monitor life.

## LightSensor

LightSensor uses a smart sensor to adjust the picture brightness depending on the light

conditions in the room for the perfect picture with minimal power usage.

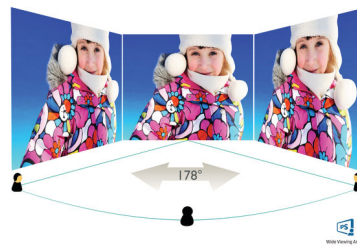
## Zero power consumption

At the flick of the 0 watt hard switch, which is conveniently located at the back of the monitor, you can completely cut off your monitor from AC power. This results in zero power consumption, reducing your carbon footprint even further.

## Eco-friendly materials

Philips is committed to using sustainable, eco-friendly materials across its monitor range. All body plastic parts, metal chassis parts and packing materials use 100% recyclable materials. In selected models, we use up to 85% post-consumer recycled plastics. Strict adherence to RoHS standards ensures a substantial reduction or elimination of toxic substances like lead and mercury, which have been eliminated completely in monitors with an LED backlight.

## IPS technology



IPS displays use advanced technology that gives you extra-wide viewing angles of 178/178 degrees, making it possible to view the display from almost any angle — even in 90-degree Pivot mode! Unlike standard TN panels, IPS displays give you remarkably crisp images with vivid colours, making it ideal not only for

Photos, films and web browsing, but also for professional applications that demand colour accuracy and consistent brightness at all times.

## LowBlue Mode



Studies have shown that just as ultra-violet rays can cause eye damage, shortwave-length blue light rays from LED displays can cause eye damage and affect vision over time. Developed for wellbeing, the Philips LowBlue Mode setting uses a smart software technology to reduce harmful shortwave blue light.

## TUV Rheinland Eye Comfort

Philips displays meet TUV Rheinland Eye Comfort standard to prevent eye strain caused by prolonged computer use. With TUV Eye Comfort certification, Philips displays ensure flicker-free, low-blue mode, no disturbing reflections, a wide viewing angle, less reduction of image quality from different angles and ergonomic stand designs for an ideal viewing experience. Keep your eyes healthy and boost work productivity.



Super Low Power



PowerSensor



LightSensor



Wide Viewing Angle



SmartErgo Base



LowBlue Mode



Flicker-free



HDMI™



Built-in Speaker

# Specifications

## Picture/Display

- LCD panel type: IPS technology
- Backlight type: W-LED system
- Panel Size: 23.8 inch/60.5 cm
- Display Screen Coating: Anti-Glare, 3H, Haze 25%
- Effective viewing area: 527.04 (H) x 296.46 (V)
- Aspect ratio: 16:9
- Maximum resolution: 1920 x 1080 @ 75 Hz\*
- Pixel Density: 93 PPI
- Response time (typical): 4 ms (Grey to Grey)\*
- Brightness: 250 cd/m<sup>2</sup>
- Contrast ratio (typical): 1000:1
- SmartContrast: 50,000,000:1
- Pixel pitch: 0.2745 x 0.2745 mm
- Viewing angle: 178° (H)/178° (V), @ C/R > 10
- Picture enhancement: SmartImage
- Colour gamut (typical): NTSC 78%\*, sRGB 102%\*
- Display colours: 16.7 M
- Scanning Frequency: 30–85 kHz (H) / 48–75 Hz (V)
- sRGB
- Flicker-free
- EasyRead
- LowBlue Mode
- Adaptive sync

## Connectivity

- Signal Input: VGA (Analogue), DVI-D (digital, HDCP), DisplayPort 1.2, HDMI 1.4 x 1
- HDCP: HDCP 1.4 (DVI/DP/HDMI)
- Sync Input: Separate Sync, Sync on Green
- USB: USB-B x 1 (upstream), USB 3.2 x 4 (downstream with 1 fast charge B.C 1.2)
- Audio (In/Out): PC audio-in, Audio out

## Convenience

- Built-in Speakers: 2 W x 2
- User convenience: SmartImage, Input, PowerSensor, Menu, Power On/Off
- Control software: SmartControl
- OSD Languages: Brazil Portuguese, Czech, Dutch, English, Finnish, French, German, Greek, Hungarian, Italian, Japanese, Korean, Polish, Portuguese, Russian, Simplified Chinese, Spanish, Swedish, Traditional Chinese, Turkish, Ukrainian
- Other convenience: Kensington lock, VESA mount (100 x 100 mm)
- Plug and Play Compatibility: DDC/CI, Mac OS X, sRGB, Windows 10 / 8.1 / 8 / 7

## Stand

- Height adjustment: 150 mm
- Pivot: +/- 90 degree
- Swivel: +/- 180 degree
- Tilt: -5 ~ 35 degree

## Power

- ECO mode: 8.6 W (typ.)
- On mode: 12.8 W (typ.) (EnergyStar test method)
- Standby mode: 0.35 W (typ.)
- Off mode: Zero watts with Zero switch
- Energy Label Class: C
- Power LED indicator: Operation - White, Standby mode - White (flashing)
- Power supply: Built-in, 100–240 VAC, 50–60 Hz

## Dimensions

- Product with stand (max height): 540 x 501 x 205 mm
- Product without stand (mm): 540 x 323 x 47 mm
- Packaging in mm (W x H x D): 730 x 450 x 139 mm

## Weight

- Product with stand (kg): 4.92 kg
- Product without stand (kg): 3.32 kg
- Product with packaging (kg): 7.61 kg

## Operating conditions

- Temperature range (operation): 0°C to 40°C °C
- Temperature range (storage): -20°C to 60°C °C
- Relative humidity: 20%-80 %
- Altitude: Operation: +12,000 ft (3658 m), Non-operation: +40,000 ft (12,192 m)
- MTBF (demonstrated): 70,000 hrs (excluded backlight)

## Sustainability

- Environmental and energy: PowerSensor, LightSensor, EnergyStar 8.0, EPEAT\*, RoHS, TCO Certified Edge
- Recyclable packaging material: 100 %
- Post-consumer recycled plastic: 85%
- Specific Substances: PVC/BFR free housing, Mercury free

## Compliance and standards

- Regulatory Approvals: CB, FCC Class B, ICES-003, CE Mark, TUV Ergo, TUV/GS, SEMKO, CU-EAC, CCC, CECP, CEL, UKRAINIAN, TUV Eye Comfort certified

## Cabinet

- Front bezel: Black
- Rear cover: Black
- Foot: Black
- Finish: Texture

## What's in the box?

- Monitor with stand
- Cables: HDMI cable, DP cable, Power cable
- User Documentation



Issue date 2021-04-21

Version: 4.0.1

12 NC: 8670 001 71386  
EAN: 87 12581 77234 5

© 2021 Koninklijke Philips N.V.  
All Rights reserved.

Specifications are subject to change without notice.  
Trademarks are the property of Koninklijke Philips N.V.  
or their respective owners.

[www.philips.com](http://www.philips.com)

\* "IPS" word mark / trademark and related patents on technologies belong to their respective owners.  
\* The maximum resolution works for either HDMI input or DP input.  
\* Response time value equal to SmartResponse  
\* NTSC Area based on CIE 1976  
\* sRGB Area based on CIE1931  
\* Fast charging complies with USB BC 1.2 standard  
\* EPEAT rating is valid only where Philips registers the product. Please visit <https://www.epeat.net/> for registration status in your country.  
\* The monitor may look different from feature images.