

Philips  
LCD monitor with  
SmoothTouch

## B Line

24 (23.8"/60.5 cm diag.)  
1920 x 1080 (Full HD)

242B1TC



# Brilliant interactive display with SmoothTouch

A durable, anti-glare touchscreen for flexible use, with articulating stand to angle as you need. Advanced In-Cell Touch (AIT) offers a slimmer look, superior touch sensitivity for quick response, outstanding and clearer visibility.

### Brilliant interactive display

- SmoothTouch display for natural, fluid touch response
- 16:9 Full HD display for crisp, detailed images
- SmartContrast for rich black details
- LowBlue Mode for easy-on-the-eyes productivity
- Less eye fatigue with Flicker-Free technology
- EasyRead mode for a paper-like reading experience

### Easy to experience

- HDMI ensures universal digital connectivity
- DisplayPort connection for maximum visuals
- SmartStand with adjustable angles, boosts productivity
- VESA mount allows for flexibility



# PHILIPS

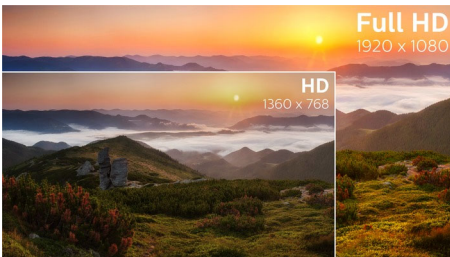
# Highlights

## SmoothTouch



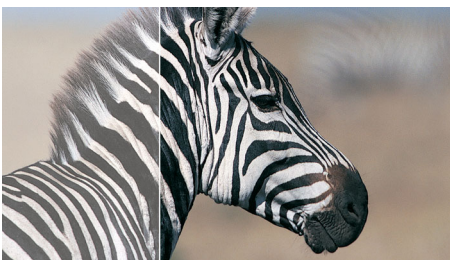
This Philips display uses Projected capacitive 10-point touch technology for fluid response. You can fully utilise the new capabilities of touch-based applications and bring your older applications to life. Touch-type with 10 fingers or play exciting interactive games with your friends. Collaborate with colleagues interactively at work or school environment and increase your productivity and efficiency.

## 16:9 Full HD display



Picture quality matters. Regular displays deliver quality, but you expect more. This display features enhanced Full HD 1920 x 1080 resolution. With Full HD for crisp detail paired with high brightness, incredible contrast and realistic colours, expect a true-to-life picture.

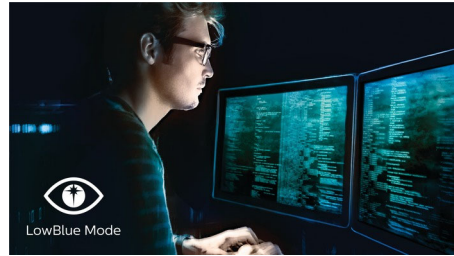
## SmartContrast



SmartContrast is a Philips technology that analyses the contents you are displaying, automatically adjusting colours and controlling

backlight intensity to dynamically enhance contrast for the best digital images and videos or when playing games where dark hues are displayed. When Economy mode is selected, contrast is adjusted and backlighting fine-tuned for just-right display of everyday office applications and lower power consumption.

## LowBlue Mode



Studies have shown that just as ultra-violet rays can cause eye damage, shortwave-length blue light rays from LED displays can cause eye damage and affect vision over time. Developed for wellbeing, the Philips LowBlue Mode setting uses a smart software technology to reduce harmful shortwave blue light.

## Flicker-Free technology



Due to the way brightness is controlled on LED-backlit screens, some users experience flicker on their screen which causes eye fatigue. Philips Flicker-Free technology applies a new solution to regulate brightness and reduce flicker for more comfortable viewing.

## SmartStand

Philips SmartStand allows for flexible adjustment of the screen. Its Z-type structure with smooth tilt, height adjustment and folding capabilities enables you to use it in various ergonomic positions. You can set the stand in

upright position for better touch control or recline it backwards, making it easy for you to draw or annotate. It even allows you to put the screen almost flat on the table for some applications when required.

## HDMI Ready



HDMI-ready

An HDMI-ready device has all the required hardware to accept High-Definition Multimedia Interface (HDMI) input. An HDMI cable enables high-quality digital video and audio to be transmitted over a single cable from a PC or any number of AV sources (including set-top boxes, DVD players, A/V receivers and video cameras).

## DisplayPort connection



DisplayPort

DisplayPort is a digital link from PC to monitor without any conversion. With higher capabilities than DVI standard, it is fully capable to support up to 15 metre cables and 10.8 Gbps/sec data transfer. With this high performance and zero latency, you get the fastest imaging and refresh rates — making DisplayPort the best choice for not only general office or home use, but also for the more demanding gaming and films, video editing and more. It also keeps interoperability in mind via the use of various adapters.



SmoothTouch



SmartContrast



LowBlue Mode



Flicker-free



EasyRead



HDMI



SmartStand



Built-in Speaker



IPS Wide Viewing Angle

# Specifications

## Picture/Display

- LCD panel type: IPS technology
- Backlight type: W-LED system
- Panel Size: 23.8 inch/60.5 cm
- Display Screen Coating: Anti-glare, 3H, Haze 25%
- Effective viewing area: 527.04 (H) x 296.46 (V)
- Aspect ratio: 16:9
- Maximum resolution: 1920 x 1080 @ 75 Hz\*
- Pixel Density: 93 PPI
- Response time (typical): 4 ms (Grey to Grey)\*
- Brightness: 250 cd/m<sup>2</sup>
- Contrast ratio (typical): 1000:1
- SmartContrast: 50,000,000:1
- Pixel pitch: 0.2745 x 0.2745 mm
- Viewing angle: 178° (H)/178° (V), @ C/R > 10
- Flicker-free
- Picture enhancement: SmartImage
- Colour gamut (typical): NTSC 88%\*, sRGB 102%\*, Adobe RGB 83%\*
- Display colours: 16.7 M
- Scanning Frequency: 30–85 kHz (H) / 48–75 Hz (V)
- sRGB
- EasyRead
- LowBlue Mode
- Adaptive sync

## Touch

- Touch technology: Self capacitive
- Touch points: 10 points
- Touch method: Finger
- Touch interface: USB
- Touch active area: 527.04 mm (H) x 296.46 mm (V)
- Operating system: Windows 10
- Palm rejection area: >= 30 x 30 mm

## Connectivity

- Signal Input: VGA (Analogue), DisplayPort 1.2, HDMI 1.4
- USB: USB 3.2 x 1 (Upstream); USB 3.2 x 3 (Downstream with 1 fast charge B.C 1.2)
- Sync Input: Separate Sync, Sync on Green
- Audio (In/Out): PC audio-in, Headphone out

## Convenience

- Built-in Speakers: 2 W x 2
- User convenience: SmartImage, Input, Brightness, Menu, Power On/Off
- Control software: SmartControl
- OSD Languages: Brazil Portuguese, Czech, Dutch, English, Finnish, French, German, Greek, Hungarian, Italian, Japanese, Korean, Polish, Portuguese, Russian, Simplified Chinese, Spanish, Swedish, Traditional Chinese, Turkish, Ukrainian
- Other convenience: Kensington lock, VESA mount (100 x 100 mm)
- Plug and Play Compatibility: DDC/CI, sRGB, Windows 10 / 8.1 / 8 / 7

## Stand

- Tilt: -5–90 degree

- Folding angle: 0–70 degrees
- Height adjustment: 183 (Horizontal), 80 (Vertical) mm

## Power

- ECO mode: 9.8 W (typ.)
- On mode: 15.6 W (typ.) (EnergyStar test method)
- Standby mode: 0.3 W (typ.)
- Off mode: Zero watts with Zero switch
- Energy Label Class: E
- Power LED indicator: Operation - White, Standby mode - White (flashing)
- Power supply: Internal, 100–240 VAC, 50–60 Hz

## Dimensions

- Product with stand (max height): 540 x 403 x 227 mm
- Product without stand (mm): 540 x 323 x 51 mm
- Packaging in mm (W x H x D): 620 x 420 x 140 mm

## Weight

- Product with stand (kg): 6.67 kg
- Product without stand (kg): 3.34 kg
- Product with packaging (kg): 9.01 kg

## Operating conditions

- Temperature range (operation): 0°C to 40°C °C
- Temperature range (storage): -20°C to 60°C °C
- Relative humidity: 20%-80 %
- Altitude: Operation: +12,000 ft (3658 m), Non-operation: +40,000 ft (12,192 m)
- MTBF (demonstrated): 70,000 hrs (excluded backlight)

## Sustainability

- Environment and energy: EnergyStar 8.0, EPEAT\*, TCO Certified Edge, RoHS
- Recyclable packaging material: 100 %
- Specific Substances: PVC/BFR free housing, Mercury free

## Compliance and standards

- Regulatory Approvals: UKRAINIAN, CB, SEMKO, TUV/GS, TUV Ergo, CU-EAC, EAEU RoHS, CE Mark, ICES-003, FCC Class B, TUV Eye Comfort certified

## Cabinet

- Front bezel: Black
- Rear cover: Black
- Foot: Black
- Finish: Texture

## What's in the box?

- Monitor with stand
- Cables: HDMI cable, DP cable, USB-A to B cable, Power cable
- User Documentation



Issue date 2021-06-16

Version: 5.1.2

12 NC: 8670 001 71389  
EAN: 87 12581 77236 9

© 2021 Koninklijke Philips N.V.  
All Rights reserved.

Specifications are subject to change without notice.  
Trademarks are the property of Koninklijke Philips N.V.  
or their respective owners.

[www.philips.com](http://www.philips.com)

\* "IPS" word mark / trademark and related patents on technologies belong to their respective owners.  
\* The maximum resolution works for either HDMI input or DP input.  
\* Response time value equal to SmartResponse  
\* NTSC Area based on CIE 1976  
\* sRGB Area based on CIE1931  
\* Adobe RGB Coverage based on CIE 1976  
\* Please refer to "SmoothTouch" in the user manual for more details on operating system support when using the touch function.  
\* Fast charging complies with USB BC 1.2 standard  
\* EPEAT rating is valid only where Philips registers the product. Please visit <https://www.epeat.net/> for registration status in your country.  
\* The monitor may look different from feature images.