

IMPORTANT SAFETY INSTRUCTIONS

When using an electric appliance, basic precautions should always be followed, including the following.

Read these instructions for use carefully before using the appliance and save them for future reference.

DANGER

To reduce the risk of electric shock:

- ▶ Never use an extension cord with this appliance. Always plug the charging base directly into the outlet.
- ▶ Do not plug in the charging base while bathing or taking a shower.
- ▶ Do not place or store the charging base where it can fall or be pulled into a bathtub or sink.
- ▶ Do not place or drop the charging base in water or any other liquid.
- ▶ Always unplug the appliance immediately after use, except when you are charging the appliance.
- ▶ Unplug the appliance from the charging base before cleaning.
- ▶ When discarding the appliance, remove it from the charging base and make sure the appliance is in the Off ("O") position. Then remove the rechargeable battery.

WARNING

To reduce the risk of burns, fire, electric shock, or injury to persons:

- ▶ Close supervision is necessary when this product is used by, on, or near children or invalids.
- ▶ This appliance is intended for household use only, as described in this manual.
- ▶ Only use attachments that are recommended by Philips Electronics North America Corporation.
- ▶ Never use the appliance/charging base if the plug is damaged, if the appliance/charging base is not working properly, if the appliance/charging base has been dropped and appears to be damaged, or if the appliance/charging base has been dropped into water. Always return the appliance/charging base to an authorized Norelco Service Location for examination and repair.
- ▶ Never drop or insert any objects into any opening of the appliance.
- ▶ Do not charge or operate the appliance outdoors, in places where aerosol (spray) products are being used or where oxygen is being administered.
- ▶ **Always check the foil before using the appliance. Do not use the appliance if the foil of the trimmer is damaged, as injury may occur.**
- ▶ Never store the appliance in direct sunlight in the pouch or at temperatures above 140°F.
- ▶ The appliance is water-resistant and can be used in the bathtub or shower. Do not submerge the appliance in water for an extended period of time.

SAVE THESE INSTRUCTIONS

IMPORTANT

This appliance contains a RECHARGEABLE NICKEL-CADMIUM BATTERY. See Battery Removal Instruction Sheet.



60-Day Money-Back Guarantee

If you are not fully satisfied with your Norelco Ladyshave Razor, Norelco will refund you the full purchase price. **The razor must be shipped prepaid by insured mail, insurance prepaid, have the sales slip indicating purchase price and date of purchase enclosed.** The razor must be postmarked **no later than 60 days** after the date of purchase. Norelco reserves the right to verify the purchase price of the razor and limit refunds not to exceed suggested retail price.

Send dated sales receipt, your complete name and address as indicated below, and the razor, prepaid to:

Norelco Consumer Products Company
A Division of Philips Electronics North America Corporation
450 North Medinah Road, Dock 16
Roselle, IL 60172-2329

Please allow 4-6 weeks for delivery of check. (Please Print)

Name _____
 Address _____
 City _____
 State _____ Zip _____
 Day time Telephone No. (____) _____
 E-mail Address _____

REASON FOR RETURNING:

PUT IT TO THE TEST & SHAVING TIPS

Like many new products, your Norelco Ladyshave Razor may take a little getting used to. If you are using a rechargeable Razor for the first time, or if you've been using a different brand, your skin may need time to adapt to the Body Select Shaving System. Give yourself a little time to practice and determine the best stroking motions for the best shave.

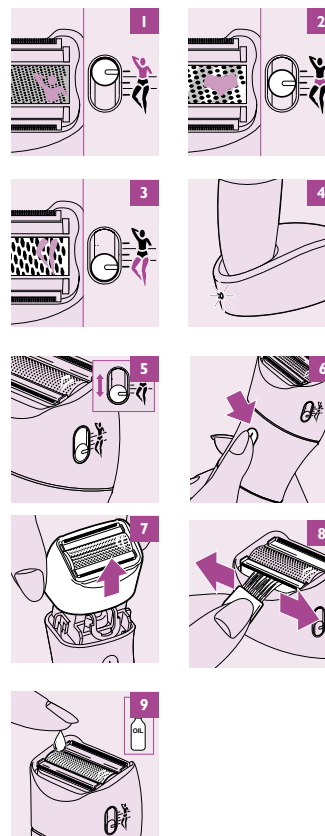
Use it exclusively for 3 weeks, or a bit longer for sensitive skin. If you alternate shaving or other hair removal methods during this adjustment period, it may become more difficult to adapt to the Norelco shaving system.

Since your Ladyshave Razor features the Body Select Shaving System, you'll be able to customize hair removal for the area you are shaving. However, at first you may not get as close a shave as you expect, or your skin may become slightly irritated. This is normal as your skin adjusts. After this adjustment period, you'll find that you can remove hair without irritating your skin, for a close, smooth shave.

The Norelco Ladyshave Razor, with Body Select Shaving System.....the choice for close, smooth shaving results. If you're not convinced after 21 days, Norelco will refund you the full purchase price, guaranteed.

BEFORE USING YOUR NEW NORELCO RAZOR

- ▶ This appliance is intended for household use only, as described in this manual.
- ▶ Before using, check foil for wear or damage. If the



Ladyshave



Body Select
 Wet/Dry
 rechargeable razor
 HP6328

PHILIPS

4203 000 52921

foil shows signs of wear or damage, do not use the Razor as injury may occur. Do not use it until the foil has been replaced.

- ▶ For wet shaving, you may wish to prepare your skin with soap or shaving cream before shaving.
- ▶ For dry shaving, be certain that your skin is clean. If you have sensitive skin, you may wish to apply talcum powder before and/or after shaving.
- ▶ When shaving your legs, underarms, or bikini line, it is not necessary to press hard to get a close shave. Pressing too hard may cause skin irritation, and the Razor will not function properly. In addition, do not use deodorant or alcohol-based lotions immediately before or after shaving. You may, however, want to use talcum powder.
- ▶ Clean the Razor regularly, for instructions see chapter 'Cleaning'.
- ▶ Only the Razor, not the charging base, can be submerged in water; however, do not submerge the Razor for extended periods of time.
- ▶ You may wish to store the Razor with the charging base connected to the outlet, so that the Razor is kept fully charged. However, remember to allow the battery to totally deplete charge every 4 weeks (see chapter **TO CHARGE/RECHARGE**).

BODY SELECT SHAVING SYSTEM

Your new Ladyshave Razor features the Body Select Shaving System. Each section of the shaving foil was specifically designed to meet your personal shaving needs, so you can choose the best selection of the foil for the area you are shaving.

- 1 Simply slide the Body Select switch on the side of the Razor head to the appropriate position for the body area you wish to shave.

- ▶ Slide the switch up for shaving underarms. (fig. 1)
- ▶ Slide the switch to the middle position for shaving bikini line or sensitive areas. (fig. 2)
- ▶ Slide the switch down for shaving legs. (fig. 3)

TO CHARGE/RECHARGE

- ▶ Charging and recharging your Razor requires a full 16 hours.
- ▶ Charge the Razor only with the charging base provided.
- ▶ Be certain hands and Razor are dry before charging.
- ▶ Recharge at temperatures between 40°F and 90°F. Charging at lower or higher temperatures adversely affects the lifetime of the battery.
- ▶ Do not charge the Razor in the pouch.

- 1 Be certain the Razor is in the Off position.

- 2 Put the Razor onto the charging unit.. The pilot light goes on to indicate that the battery is being charged (fig. 4)

- 3 Plug the charging base into any 120V AC outlet. Use only the charging base provided.

▶ An adaptor plug and converter may be necessary for the use of the charging base plug in some foreign countries. Use an attachment plug adaptor of the proper configuration for the power outlet.

- 4 Charging requires 16 hours. This Razor model, HP6328, is for cordless shaving only.

- 5 Razor may be continuously charged with charging base connected to electrical outlet for a maximum of 4 weeks. At the end of 4 weeks, you must allow the battery to totally deplete charge before recharging.

- To deplete charge, shave in usual manner; however, do not recharge Razor between shaves. Continue to use Razor until battery is totally depleted.

- 6 You may then keep Razor continuously charging for another 4-week period before you must once again allow Razor to totally deplete charge.

IMPORTANT:

Before connecting Razor to charging base, be certain Razor is in Off ("O") position. While Razor is charging, the recharge light will light with Razor in either the On or Off position, however, your Razor will only recharge if Razor is turned off.

SHAVING LEGS

- 1 Prepare legs for wet or dry shaving (see **BEFORE USING YOUR NEW NORELCO RAZOR**).

- 2 To shave legs, slide the Body Select Switch down to the position for the silver foil area. (fig. 5)

- 3 Turn the Razor on. (fig. 6)

- 4 Hold the Razor so that Shaving Head is in full contact with your skin. Shave with smooth, steady strokes, against the direction of hair growth.

- Pressing too hard may cause skin irritation.
- Practice is best for optimum results.
- Make sure both trimmers and shaving foil are in complete contact with skin.

- 5 Turn the Razor Off.

SHAVING UNDERARMS

- 1 Prepare underarms for wet or dry shaving (see **BEFORE USING YOUR NEW NORELCO RAZOR**).

- 2 To shave underarms slide Body Select Switch up to the position for the golden foil area. (fig. 1)

- 3 Turn Razor on.

- 4 Lift your arm until skin under arm stretches slightly.

- 5 Hold Razor so that Shaving Head is in full contact with the skin. Shave with gentle strokes, using light pressure.

- ▶ Pressing too hard may cause skin irritation, and Razor will not function properly.

- 6 Do not use deodorant or alcohol-based lotions immediately before or after shaving. You may, however, want to use talcum powder.

- 7 Turn Razor Off.

SHAVING BIKINI LINE

- 1 Prepare bikini line or other sensitive areas for wet or dry shaving (see **BEFORE USING YOUR NEW NORELCO RAZOR**).

- 2 To shave bikini line or other sensitive areas, slide Body Select Switch to the position for the golden striped foil area. (fig. 2)

- 3 Turn Razor on.

- 4 Stretch skin taut with your fingers.

- 5 Hold Razor so that shaving head is in full contact with the skin and shave using gentle strokes.

- 6 Turn razor off.

CLEANING

- ▶ Regular cleaning guarantees better shaving results.

- ▶ It is recommended that you replace your shaving foil once a year.
- ▶ Always switch Razor Off and remove Charging base from outlet before cleaning.
- ▶ Never clean, remove, or replace Shaving Head while motor is on.
- ▶ Do not apply pressure or touch Shaving Head with hard objects as this may dent or damage foil or trimmers. If damage occurs, replace foil.
- ▶ Check foil regularly.
- ▶ Never use a razor with a damaged or broken foil.

AFTER EACH USE

After each use, Razor should be quickly cleaned by rinsing under running water or dipping and shaking gently in water.

IMPORTANT: DO NOT keep Razor submerged in water for a long period of time.

ONCE A MONTH - CLEANING SHAVING HEAD

IMPORTANT: DO NOT apply pressure to Shaving Foil.

- 1 Remove the Shaving Head (fig. 7)

- ▶ Hold Shaving Head by plastic housing only - Shaving Foil is very delicate and should not be handled. If foil becomes worn or damaged, replace it.

- 2 Hairs can be removed from Shaving Head housing and cutter block by using a soft brush or by lightly blowing out hairs. Be sure you also brush hairs away from under the trimmers. (fig. 8)

- ▶ NOTE: Avoid using brush on Shaving Foil, as this may cause damage.

- ▶ Body of Razor and Shaving Head, including Shaving Foil, may also be rinsed under running water to remove hairs.
- ▶ Do not use or clean razor with water hotter than shower temperature.

- 3 Be sure all parts are dry before reassembling.

- ▶ Do not use cloth or towel to dry Shaving Foil or cutter block; allow to air dry.

- 4 Replace Shaving Head by gently pressing back into position on Razor body.

- Hold Razor Head by plastic housing only.
- Always replace Protective Cap on shaving head to prevent damage to foil.

- ▶ **NOTE:** Use cold or lukewarm water. Never use cleaners such as alcohol, nail polish remover, corrosive detergents or scouring pads.

- ▶ For best shaving performance, it is suggested to lightly oil Shaving Head twice a year by spreading a drop of mineral oil over the foil and trimmers. (fig. 9)

If this does not improve the performance of your razor, it may be time to replace the foil.

- ▶ Never immerse Charging base in water or other liquid. You may clean by wiping with a damp cloth.
- ▶ This razor has no other user-serviceable parts. Any other service should be performed by an Authorized Norelco Service Location.

ASSISTANCE

- ▶ For assistance or the Authorized Norelco Service Location nearest you, call toll free: 1-800-243-3050 or visit our Norelco website: www.norelco.com

- ▶ Authorized Norelco Service Location information is available 24 hours a day, 7 days a week.

BATTERY REMOVAL

THIS NORELCO RAZOR CONTAINS A NICKEL-CADMIUM RECHARGEABLE BATTERY WHICH MUST BE DISPOSED OF PROPERLY.

- ▶ Battery should only be removed when razor is to be discarded.
- ▶ Refer to Battery Removal instruction sheet for directions on removing the rechargeable battery.

ACCESSORIES

For maximum performance, replace your Norelco Ladyshave foil and cutter block once a year

- Model HP6120 Philips replacement foil
- Model HP2909 Philips cutter block

Razor accessories may be purchased at a store near you, an authorized Norelco Service Location on our website www.norelco.com or by using the handy order form enclosed.

FULL TWO-YEAR WARRANTY

Philips Electronics North America Corporation warrants each new Norelco Product, Model HP6328 (except foil and trimmers), against defects in materials or workmanship for a period of two years from the date of purchase, and agrees to repair or replace any defective product without charge.

IMPORTANT: This warranty does not cover damage resulting from accident, misuse or abuse, lack of reasonable care, the affixing of any attachment not provided with the product or loss of parts or subjecting the product to any but the specified voltage.* Use of unauthorized replacement parts will void this warranty.

PHILIPS ELECTRONICS NORTH AMERICA CORPORATION WILL NOT PAY FOR WARRANTY SERVICE PERFORMED BY A NON-AUTHORIZED REPAIR SERVICE AND WILL NOT REIMBURSE THE CONSUMER FOR DAMAGE RESULTING FROM WARRANTY SERVICE PERFORMED BY A NON-AUTHORIZED REPAIR SERVICE. NO RESPONSIBILITY IS ASSUMED FOR ANY SPECIAL, INCIDENTAL OR CONSEQUENTIAL DAMAGES.

In order to obtain warranty service, simply take or ship the product postage prepaid to the nearest Authorized Norelco Service Location. It is suggested that for your protection you return shipments of product by insured mail, insurance prepaid. Damage occurring during shipment is not covered by this warranty.

NOTE: No other warranty, written or oral, is authorized by Philips Electronics North America Corporation.

This warranty gives you specific legal rights, and you may also have other rights which vary from state to state. Some states do not allow the exclusion or limitation of incidental or consequential damages, so the above exclusion and limitations may not apply to you.

*Read enclosed instructions carefully.

Manufactured for:
Norelco Consumer Products Company
A Division of Philips Electronics North America Corporation
1010 Washington Blvd., Stamford, CT 06912-0015

**RAZOR MADE IN AUSTRIA.
CHARGING BASE MADE IN CHINA.**

Ladyshave & Design and Norelco are Registered Trademarks of Philips Electronics North America Corporation.

Ladyshave and Body Select are Registered Trademarks of Koninklijke Philips Electronics N.V.

PHILIPS and Philips Shield are Registered Trademarks of Koninklijke Philips Electronics N.V.

© 2003 Philips Electronics North America Corporation. All Rights Reserved.



This symbol on the product's nameplate means it is listed by Underwriters' Laboratories, Inc.