

# Dell OptiPlex 5080 Small Form Factor Dust Filter

## User Guide



## Notes, cautions, and warnings

 **NOTE:** A NOTE indicates important information that helps you make better use of your product.

 **CAUTION:** A CAUTION indicates either potential damage to hardware or loss of data and tells you how to avoid the problem.

 **WARNING:** A WARNING indicates a potential for property damage, personal injury, or death.

# Contents

**Chapter 1: Dust Filter for OptiPlex Small Form Factor..... 4**

**Chapter 2: Getting help.....6**

    Contacting Dell.....6

# Dust Filter for OptiPlex Small Form Factor


The dust filter for the Dell OptiPlex Small Form Factor helps protect the system from fine dust particles. After installation, the BIOS can be enabled to generate a preboot reminder to clean or replace the dust filter based on the time interval set.

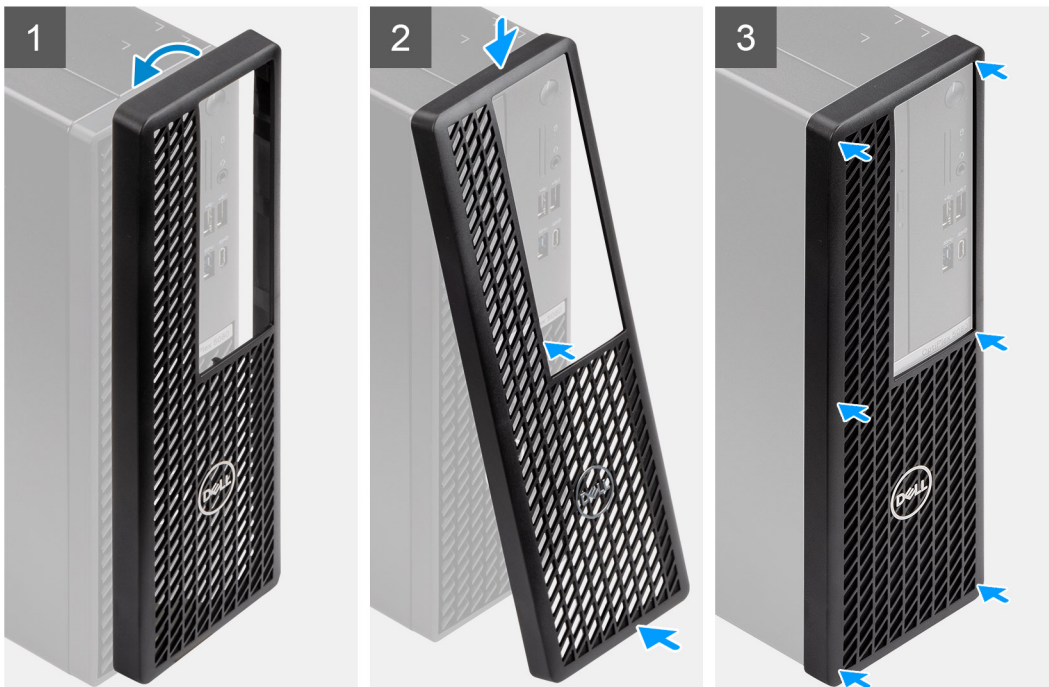
## About this task

Follow these steps to install the dust filter:


## Steps

1. Align the top edge of the dust filter to the top edge of the system.
2. Press the lower edge of the dust filter to close over the system.
3. Gently press as shown to ensure that the filter fits snugly onto the system.

 **NOTE:** Dust filter design may vary.



4. Restart the system and press **F2** to enter the BIOS Setup menu.
5. In the BIOS Setup menu, go to **System Configuration > Dust Filter Maintenance** and select from any of the following intervals: 15, 30, 60, 90, 120, 150, or 180 days.

 **NOTE:** Default setting: Disabled.

 **NOTE:** Alerts are generated only during a system reboot and not during normal operating system operation.

**Next steps**

To clean the dust filter, brush or gently vacuum and then wipe down the external surfaces with a moist cloth.


# Getting help

## Topics:

- [Contacting Dell](#)

## Contacting Dell

### Prerequisites

 **NOTE:** If you do not have an active Internet connection, you can find contact information on your purchase invoice, packing slip, bill, or Dell product catalog.

### About this task

Dell provides several online and telephone-based support and service options. Availability varies by country and product, and some services may not be available in your area. To contact Dell for sales, technical support, or customer service issues:

### Steps

1. Go to **Dell.com/support**.
2. Select your support category.
3. Verify your country or region in the **Choose a Country/Region** drop-down list at the bottom of the page.
4. Select the appropriate service or support link based on your need.