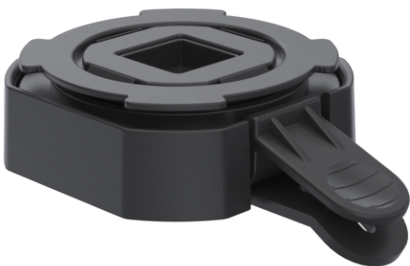


OtterBox uniVERSE Connector with Quick Release adapter - 02

DUO604-02

mCase Duo for OtterBox uniVERSE is a mounting solution that enables a payment terminal to be connected via the mCase Duo to your tablet uniVERSE case to create a versatile cost effective and simple to use mobile point of sale (mPOS).

Quick-release system for easy attachment and detachment of payment terminals to the uniVERSE case
Compatible with multiple OtterBox uniVERSE tablet cases, offering versatile mounting options
Supports a wide range of payment devices for flexible mPOS setups
2-year warranty.



Product Specifications

Colour Name	Black
Colour Type	Structured
Device Brand	Otterbox
Main material	Plastic
Product Version	1.0
Height adjustable?	No
Mounting	DuraTilt with MultiGrip, Stack with MultiGrip, TabTilt
Mounting Type	Counter
Units per Box	1
Unit Weight	0.13 kg
Box Weight	0.22 kg
Warranty	2 Years

Product Dimensions

Unit Depth	95 mm
Unit Height	30.6 mm
Unit Weight	0.13 kg

Package Dimensions

Box Depth	193 mm
Box Height	63 mm
Box Width	126 mm