

PERFORMANCE

Processor

Intel® Core™ i7-10510U (4C / 8T, 1.8 / 4.9GHz, 8MB)

Graphics

NVIDIA® Quadro® P520 2GB GDDR5

Chipset

Intel SoC Platform

Memory

16GB Soldered DDR4-2666 non-ECC + 16GB SO-DIMM DDR4-2666 non-ECC

Memory Slots

One memory soldered to systemboard, one DDR4 SO-DIMM slot, dual-channel capable

Max Memory

Up to 48GB (16GB soldered + 32GB SO-DIMM)

Storage

1TB SSD M.2 2280 PCIe NVMe Opal2

Storage Support

One drive, up to 2TB M.2 2280 SSD

Card Reader

MicroSD Reader

Optical

None

Audio Chip

High Definition (HD) Audio, Realtek® ALC3287 codec

Speakers

Stereo speakers, 2W x2, Dolby® Audio™

Camera

720p + IR with ThinkShutter

Microphone

2x, Array

Battery

Integrated 57Wh

Max Battery Life

MobileMark® 2014: 16.5 hr
MobileMark 2018: 10.48 hr
JEITA 2.0: 16.5 hr

Power Adapter

65W USB-C 3-pin

DESIGN

Display

15.6" UHD (3840x2160) IPS 600nits Anti-glare, HDR 400, Dolby Vision™, 100% Adobe®

Touchscreen

None

Color Calibrator

Factory Color Calibration

Keyboard

Backlit, Russian

Case Color

Black

Case Material

PPS / 50% GF (Top), PA / 50% GF (Bottom)

Dimensions (WxDxH)

365.8 x 248 x 19.1 mm (14.40 x 9.76 x 0.75 inches)

Weight

1.75 kg (3.86 lbs)

SOFTWARE

Operating System

Windows® 10 Pro 64, Russian

Bundled Software

None

CONNECTIVITY

Ethernet

100/1000M

WLAN + Bluetooth™

Intel AX201 11ax, 2x2 + BT5.1

WWAN

WWAN Upgradable

SIM Card

None

NFC

None

Standard Ports

- 1x side docking connector
- 2x USB 3.2 Gen 1 (one Always On)
- 1x Security keyhole
- 1x Ethernet (RJ-45)
- 1x USB-C 3.2 Gen 2 / Thunderbolt™ 3 (support data transfer, Power Delivery and DisplayPort™)
- 1x USB-C 3.2 Gen 1 (support data transfer, Power Delivery and DisplayPort)
- 1x HDMI® 1.4b
- 1x headphone / microphone combo jack (3.5mm)
- 1x microSD card reader

Optional Ports (configured)

- 1x Smart card reader
- 1x Nano-SIM card slot (WWAN models)

Monitor Cable

None

SECURITY & PRIVACY

Smart Card Reader

Smart Card Reader

Security Chip

Discrete TPM 2.0

Fingerprint Reader

Touch Style, Match-on-Chip

Physical Locks

Kensington® Security Slot

Other Security

- IR camera for Windows® Hello
- ThinkShutter camera cover

MANAGEABILITY

System Management

None

SERVICE

Base Warranty

3-year, Depot

Included Upgrade

3Y Premier TP WS WHB (CPN) (5WS1B09494)

ACCESSORIES

Bundled Accessories

None

CERTIFICATIONS

Green Certifications

- ENERGY STAR® 8.0
- EPEAT™ Gold
- RoHS compliant

Mil-Spec Test

MIL-STD-810G military test passed

ISV Certifications

Please visit www.thinkworkstations.com/isv-certifications/

MODEL

TopSeller : Yes

Announce Date : 2020-10-13

EAN / UPC / JAN : 0195348852043

End of Support : 2026-12-05

Premier Support - A direct 24x7x365 line to our most elite technicians.



Advanced technical support, 24x7x365, in more than 100 markets



Technical Account Managers for proactive relationship and escalation management



Comprehensive hardware & OEM software support



Priority on service delivery and repair parts



Single point of contact for simplified end-to-end case management



Lenovo Service Connect Portal for customized reporting and product support

Accidental Damage Protection - Protection of your PC from the unexpected.

Experience shows that a significant portion of devices may be damaged (and not covered under warranty) in the first three years. Lenovo's Accidental Damage Protection service covers accidents beyond the system warranty such as drops, spills, bumps and even electrical surges. Make sure your new device has maximum protection, avoid unplanned costs and get peace of mind.

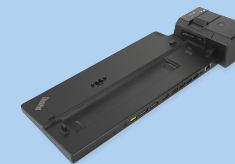
Base Warranty - Included with the systems you purchase, default 1- or 3-year coverage window.

Warranty Extensions & Upgrades - Service and protection that's right for your circumstances.

- Pick Up & Return Courier
- Onsite Support
- Technician Installed Customer
- Replaceable Unit Service
- International Warranty Upgrade

Lenovo may not offer the products, services or features discussed in this document in all regions. Lenovo may withdraw an offering at any time. Information is subject to change without notice. Consult your local representative for information on offerings available in your area. Lenovo reserves the right to change specifications or other product information without notice. Lenovo is not responsible for photographic or typographical errors. Lenovo provides this publication "as is" without warranty of any kind, either express or implied, including the implied warranties of merchantability or fitness for a particular purpose.

Recommended Accessories



ThinkPad Ultra Docking Station (American Standard Plug)

40AJ0135US

The ThinkPad Ultra Docking Station provides the best docking experience for large enterprise ThinkPad customers. The innovative side connector, designed exclusively for ThinkPad notebooks, provides a driver-free way t...



ThinkPad Thunderbolt 3 Workstation Dock Gen 2

40ANY230US

Lenovo understands that modern business depends on a wide variety of notebooks and devices from different brands working seamlessly together to meet business needs. To deliver this experience, ThinkPad Thunderbolt 3 W...

For a full list of accessories and services, please visit:
<https://smartfind.Lenovo.com>

Lenovo

PSREF
Product Specifications
Reference