

# Lenovo

## IdeaPad S145 Series

# SETUP GUIDE

Guide de configuration

Einrichtungsanleitung

Guida di configurazione

Installatiegids

Manual de Configuração

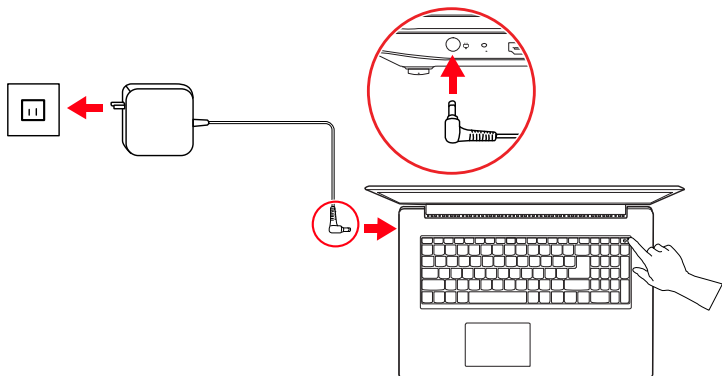
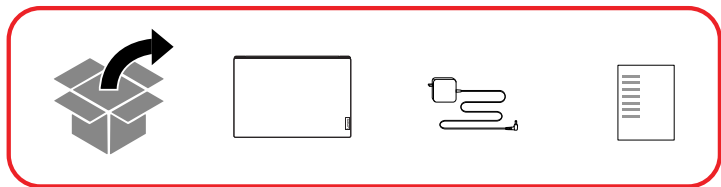
The Lenovo logo is positioned in the bottom right corner of the page. It consists of the word "Lenovo" written in white, bold, sans-serif font, oriented vertically within a solid red rectangular background.

Lenovo

# Initial Setup

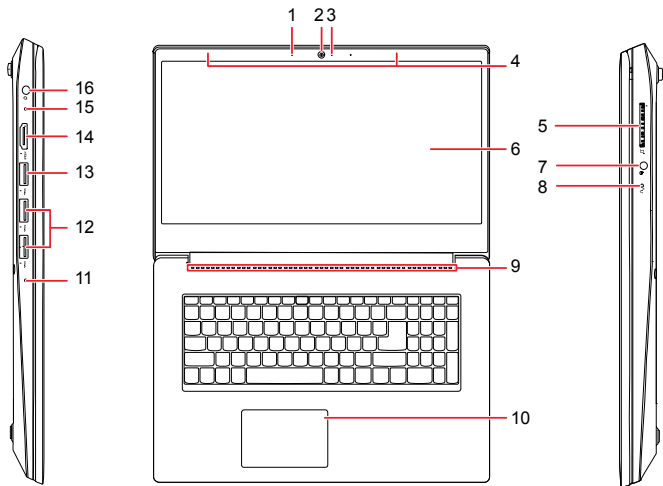
---

Configuration initiale | Erstkonfiguration | Configurazione iniziale |  
Eerste installatie | Configuração inicial



# Overview

Présentation | Überblick | Panoramica | Overzicht | Descrição geral



- |                                    |                             |
|------------------------------------|-----------------------------|
| 1. Microphone                      | 9. Ventilation slots        |
| 2. Camera                          | 10. Touchpad                |
| 3. Camera light                    | 11. Power light             |
| 4. Wireless LAN/Bluetooth antennas | 12. USB 3.1 connector Gen 1 |
| 5. SD card slot                    | 13. USB 2.0 connector       |
| 6. Screen                          | 14. HDMI™ connector         |
| 7. Audio connector                 | 15. Charging light          |
| 8. Novo button                     | 16. ac power connector      |

**i** Read the statement on USB transfer rate in the *User Guide*. Refer to the *Safety and Warranty Guide* for accessing the *User Guide*.

# Overview

---

## Présentation | Überblick | Panoramica | Overzicht | Descrição geral

- |   |                               |
|---|-------------------------------|
| 1. Microphone                               | 9. Ouvertures de ventilation  |
| 2. Caméra                                   | 10. Pavé tactile              |
| 3. Voyant de la caméra                      | 11. Voyant d'alimentation     |
| 4. Antennes réseau local sans fil/Bluetooth | 12. Connecteur USB 3.1 Gen 1  |
| 5. Logement pour carte SD                   | 13. Connecteur USB 2.0        |
| 6. Ecran                                    | 14. Connecteur HDMI™          |
| 7. Connecteur audio                         | 15. Voyant de charge          |
| 8. Bouton Novo                              | 16. Connecteur d'alimentation |

**i** Lire la déclaration sur le taux de transfert USB dans le *Guide d'utilisation*. Consulter les *Consignes de sécurité et déclaration de garantie* pour accéder au *Guide d'utilisation*.

- |                             |                              |
|-----------------------------|------------------------------|
| 1. Mikrofon                 | 9. Lüftungsschlitze          |
| 2. Kamera                   | 10. TouchPad                 |
| 3. Kameraleuchte            | 11. Betriebsanzeige          |
| 4. WLAN-/Bluetooth-Antennen | 12. USB 3.1-Anschluss 1. Gen |
| 5. SD-Karten-Steckplatz     | 13. USB 2.0-Anschluss        |
| 6. Bildschirm               | 14. HDMI™-Anschluss          |
| 7. Audioanschluss           | 15. Ladeanzeige              |
| 8. Novo-Taste               | 16. Netzteilanschluss        |

**i** Lesen Sie den Hinweis zur USB-Übertragungsrate im *Benutzerhandbuch*. Informationen zum Zugriff auf das *Benutzerhandbuch* finden Sie im *Handbuch Sicherheit und Garantie*.

For Barcode Position Only

Printed in China  
PN: SP40X19089

# Overview

---

## Présentation | Überblick | Panoramica | Overzicht | Descrição geral

1. Microfono
2. Fotocamera
3. Spia della fotocamera
4. Antenne WLAN (Wireless LAN)/Bluetooth
5. Slot per schede SD
6. Schermo
7. Connettore audio
8. Pulsante Novo
9. Slot di ventilazione
10. Touchpad
11. Spia dell'alimentazione
12. Connettore USB 3.1 Gen 1
13. Connettore USB 2.0
14. Connettore HDMI™
15. Spia di carica
16. Connettore di alimentazione CA

**i** Leggere le informazioni sulla velocità di trasferimento USB nella *Guida per l'utente*. Fare riferimento alla *Guida in materia di sicurezza e garanzia* per accedere alla *Guida per l'utente*.

1. Microfoon
2. Camera
3. Cameralampje
4. Antennes draadloos LAN/Bluetooth
5. SD-kaartsleuf
6. Scherm
7. Audioaansluiting
8. Novo-knop
9. Ventilatieopeningen
10. Touchpad
11. Aan/uit-lampje
12. USB 3.1 Gen 1-aansluiting
13. USB 2.0-aansluiting
14. HDMI™-aansluiting
15. Oplaadlampje
16. Netvoedingsaansluiting

**i** Lees de verklaring over de USB-overdrachtssnelheid in de *Gebruikershandleiding*. Raadpleeg de *Handleiding veiligheid en garantie* voor toegang tot de *Gebruikershandleiding*.

1. Microfone
2. Câmara
3. Luz da câmara
4. Antenas de LAN sem fios/Bluetooth
5. Ranhura para cartões SD
6. Ecrã
7. Conector de áudio
8. Botão Novo
9. Ranhuras de ventilação
10. Painel tátil
11. Luz de alimentação
12. Conector USB 3.1 Gen 1
13. Conector USB 2.0
14. Conector HDMI™
15. Luz de carregamento
16. Conector do transformador CA

**i** Leia a declaração relativa à velocidade de transferência USB no *Manual do Utilizador*. Consulte o *Manual de Segurança e Garantia* para aceder ao *Manual do Utilizador*.

# Additional information

## Informations complémentaires | Zusätzliche Informationen | Informazioni aggiuntive | Aanvullende informatie | Informações adicionais

### European Union – compliance with the Radio Equipment Directive

Hereby, Lenovo (Singapore) Pte. Ltd., declares that the radio equipment type(s) Lenovo BS145-15IGM, Lenovo BS145-15IWL, Lenovo IdeaPad S145-14API, Lenovo IdeaPad S145-14AST, Lenovo IdeaPad S145-14IGM, Lenovo IdeaPad S145-14IKB, Lenovo IdeaPad S145-14IML, Lenovo IdeaPad S145-14IWL, Lenovo IdeaPad S145-14IIL, Lenovo IdeaPad S145-15API, Lenovo IdeaPad S145-15AST, Lenovo IdeaPad S145-15IGM, Lenovo IdeaPad S145-15IKB, Lenovo IdeaPad S145-15IML, Lenovo IdeaPad S145-15IWL, Lenovo IdeaPad S145-15IIL are in compliance with Directive 2014/53/EU.

The full text of the system EU declaration of conformity and the EU wireless module declarations are available at the following Internet addresses:

- For notebook computers:  
<https://www.lenovo.com/eu-doc-notebooks>
- For tablets:  
<https://www.lenovo.com/eu-doc-tablets>

This radio equipment operates with the following frequency bands and maximum radio-frequency power:

Technology	Frequency band [MHz]	Maximum transmit power
WLAN 802.11b/g/n	2400 - 2483.5	< 20 dBm
WLAN 802.11a/n/ac	5150 - 5725	< 23 dBm
WLAN 802.11a/n/ac	5725 - 5875	< 13,98 dBm
Bluetooth BR/EDR/LE	2400 - 2483.5	< 20 dBm

### Union européenne – Conformité à la directive concernant l'équipement radio

Par la présente, Lenovo (Singapore) Pte. Ltd., déclare que l'équipement radio de(s) type(s) Lenovo BS145-15IGM, Lenovo BS145-15IWL, Lenovo IdeaPad S145-14API, Lenovo IdeaPad S145-14AST, Lenovo IdeaPad S145-14IGM, Lenovo IdeaPad S145-14IKB, Lenovo IdeaPad S145-14IML, Lenovo IdeaPad S145-14IWL, Lenovo IdeaPad S145-14IIL, Lenovo IdeaPad S145-15API, Lenovo IdeaPad S145-15AST, Lenovo IdeaPad S145-15IGM, Lenovo IdeaPad S145-15IKB, Lenovo IdeaPad S145-15IML, Lenovo IdeaPad S145-15IWL, Lenovo IdeaPad S145-15IIL sont conformes à la Directive 2014 /53/EU.

Le texte complet de la déclaration de l'UE de conformité du système et les déclarations de l'UE sur les modèles sans fil sont disponibles aux adresses suivantes :

- Pour les ordinateurs portables :  
<https://www.lenovo.com/eu-doc-notebooks>
- Pour les tablettes :  
<https://www.lenovo.com/eu-doc-tablets>

Cet équipement radio utilise les bandes de fréquences suivantes et une alimentation à haute fréquence maximum :

Technologie	Bande de fréquence [MHz]	Niveau de puissance de transmission maximal
WLAN 802.11b/g/n	2 400 - 2 483,5	< 20 dBm
WLAN 802.11a/n/ac	5 150 - 5 725	< 23 dBm
WLAN 802.11a/n/ac	5 725 - 5 875	< 13,98 dBm
Bluetooth BR/EDR/LE	2 400 - 2 483,5	< 20 dBm

### Europäische Union - Erfüllung der Funkanlagen-Richtlinie

Hiermit erklärt Lenovo (Singapore) Pte. Ltd., dass die Funkgeräte vom Typ Lenovo BS145-15IGM, Lenovo BS145-15IWL, Lenovo IdeaPad S145-14API, Lenovo IdeaPad S145-14AST, Lenovo IdeaPad S145-14IGM, Lenovo IdeaPad S145-14IKB, Lenovo IdeaPad S145-14IML, Lenovo IdeaPad S145-14IWL, Lenovo IdeaPad S145-14IIL, Lenovo IdeaPad S145-15API, Lenovo IdeaPad S145-15AST, Lenovo IdeaPad S145-15IGM, Lenovo IdeaPad S145-15IKB, Lenovo IdeaPad S145-15IML, Lenovo IdeaPad S145-15IWL, Lenovo IdeaPad S145-15IIL die Richtlinie 2014/53/EU erfüllen.

Die vollständige EU-Konformitätserklärung für das System sowie die EU-Richtlinien für drahtlose Module finden Sie unter den folgenden Internetadressen:

- Bei Notebook-Computern:  
<https://www.lenovo.com/eu-doc-notebooks>
- Bei Tablets:  
<https://www.lenovo.com/eu-doc-tablets>

Dieses Funkgerät arbeitet mit den folgenden Frequenzbändern und der folgenden maximalen HF-Leistung:

Technologie	Frequentieband [MHz]	Maximale Overbrengingsprestatie
WLAN 802.11b/g/n	2400 - 2483,5	< 20 dBm
WLAN 802.11a/n/ac	5150 - 5725	< 23 dBm
WLAN 802.11a/n/ac	5725 - 5875	< 13,98 dBm
Bluetooth BR/EDR/LE	2400 - 2483,5	< 20 dBm

## Unione Europea - Conformità alla direttiva sulle apparecchiature radio per l'Unione Europea

Pertanto, Lenovo (Singapore) Pte. Ltd., dichiara che i tipi di apparecchiature radio Lenovo BS145-15IGM, Lenovo BS145-15IWL, Lenovo IdeaPad S145-14API, Lenovo IdeaPad S145-14AST, Lenovo IdeaPad S145-14IGM, Lenovo IdeaPad S145-14IKB, Lenovo IdeaPad S145-14IML, Lenovo IdeaPad S145-14IWL, Lenovo IdeaPad S145-14IIL, Lenovo IdeaPad S145-15API, Lenovo IdeaPad S145-15AST, Lenovo IdeaPad S145-15IGM, Lenovo IdeaPad S145-15IKB, Lenovo IdeaPad S145-15IWL, Lenovo IdeaPad S145-15IIL sono conformi alla direttiva 2014/53/UE.

Il testo integrale della dichiarazione di conformità dei sistemi dell'UE e delle dichiarazioni dei moduli wireless dell'UE sono disponibili ai seguenti indirizzi Internet:

- Per i computer notebook:  
<https://www.lenovo.com/eu-doc-notebooks>
- Per i tablet:  
<https://www.lenovo.com/eu-doc-tablets>

Questa apparecchiatura radio funziona con le seguenti bande di frequenza e di alimentazione a radiofrequenza massime:

Tecnologia	Banda di frequenza [MHz]	Potenza di trasmissione massima
WLAN 802.11b/g/n	2400 - 2483,5	< 20 dBm
WLAN 802.11a/n/ac	5150 - 5725	< 23 dBm
WLAN 802.11a/n/ac	5725 - 5875	< 13,98 dBm
Bluetooth BR/EDR/LE	2400 - 2483,5	< 20 dBm

## Europese Unie - naleving van de richtlijnen inzake radioapparatuur

Hierbij verklaart Lenovo (Singapore) Pte. Ltd., dat de radioapparatuur type(n) Lenovo BS145-15IGM, Lenovo BS145-15IWL, Lenovo IdeaPad S145-14API, Lenovo IdeaPad S145-14AST, Lenovo IdeaPad S145-14IGM, Lenovo IdeaPad S145-14IKB, Lenovo IdeaPad S145-14IML, Lenovo IdeaPad S145-14IWL, Lenovo IdeaPad S145-14IIL, Lenovo IdeaPad S145-15API, Lenovo IdeaPad S145-15AST, Lenovo IdeaPad S145-15IGM, Lenovo IdeaPad S145-15IKB, Lenovo IdeaPad S145-

15IML, Lenovo IdeaPad S145-15IWL, Lenovo IdeaPad S145-15IIL conform Richtlijn 2014/53/EU zijn.

De volledige tekst van de EU-verklaring van conformiteit van het systeem en de EU-verklaringen inzake draadloze modules zijn beschikbaar op de volgende internetadressen:

- Voor notebookcomputers:  
<https://www.lenovo.com/eu-doc-notebooks>
- Voor tablets:  
<https://www.lenovo.com/eu-doc-tablets>

Deze radioapparatuur werkt met de volgende frequentiebanden en maximaal radiofrequentievermogen:

Technologie	Frequentieband [MHz]	Maximaal zendvermogen
WLAN 802.11b/g/n	2400 - 2483,5	< 20 dBm
WLAN 802.11a/n/ac	5150 - 5725	< 23 dBm
WLAN 802.11a/n/ac	5725 - 5875	< 13,98 dBm
Bluetooth BR/EDR/LE	2400 - 2483,5	< 20 dBm

## União Europeia - conformidade com a Diretiva de Equipamento de Rádio

Pelo presente, a Lenovo (Singapore) Pte. Ltd. declara que o(s) tipo(s) de equipamento de rádio do Lenovo BS145-15IGM, Lenovo BS145-15IWL, Lenovo IdeaPad S145-14API, Lenovo IdeaPad S145-14AST, Lenovo IdeaPad S145-14IGM, Lenovo IdeaPad S145-14IKB, Lenovo IdeaPad S145-14IML, Lenovo IdeaPad S145-14IWL, Lenovo IdeaPad S145-14IIL, Lenovo IdeaPad S145-15API, Lenovo IdeaPad S145-15AST, Lenovo IdeaPad S145-15IGM, Lenovo IdeaPad S145-15IKB, Lenovo IdeaPad S145-15IWL, Lenovo IdeaPad S145-15IIL estão em conformidade com a Diretiva 2014/53/UE.

O texto integral da declaração de conformidade da UE do sistema e as declarações da UE do módulo sem fios estão disponíveis nos seguintes endereços na Internet:

- Para os computadores portáteis:  
<https://www.lenovo.com/eu-doc-notebooks>
- Para tablets:  
<https://www.lenovo.com/eu-doc-tablets>

Este equipamento de rádio funciona com as seguintes bandas de frequência e potência de radiofrequência máxima:

Tecnologia	Banda de frequência [MHz]	Energia máxima transmitida
WLAN 802.11b/g/n	2400 - 2483,5	< 20 dBm
WLAN 802.11a/n/ac	5150 - 5725	< 23 dBm
WLAN 802.11a/n/ac	5725 - 5875	< 13,98 dBm
Bluetooth BR/EDR/LE	2400 - 2483,5	< 20 dBm

# E-manual

---

Manuel en ligne | E-Handbuch | Manuale elettronico | E-handleiding |  
Manual electrónico



---

**First Edition (August 2019)**

**© Copyright Lenovo 2019.**

LIMITED AND RESTRICTED RIGHTS NOTICE: If data or software is delivered pursuant to a General Services Administration "GSA" contract, use, reproduction, or disclosure is subject to restrictions set forth in Contract No. GS-35F-05925.

**Reduce | Reuse | Recycle**

