

# PHILIPS



IPL hair removal device:  
be hair-free for longer

Philips Lumea IPL 9000  
Series

SmartSkin sensor

3 intelligent attachments: body,  
face, precision

Lumea IPL App

Both cordless and corded use



BRI955/00

## Enjoy 18 months of visibly hair-free smooth skin\*

## Enjoy 18 months of visibly hair-free smooth skin\*

Enjoy hassle-free, personalised treatment with the cordless version of our fastest Lumea IPL device. SenseIQ technology with smart attachments and guidance in the Lumea IPL app to give you long-lasting smooth skin.

### **Gentle and effective for long-lasting smooth skin**

- Fast results with treatments only every 2 weeks
- For convenience with corded and cordless options
- Developed with dermatologists to be easy and effective

### **Full solution for face and body**

- Full solution for face and body with 3 smart attachments
- Suitable for most skin tones and hair colours

### **Personalised IPL hair removal treatment**

- Gentle and comfortable with SenseIQ
- Optimise your routine with the Philips Lumea IPL app

## Philips Lumea IPL 9000 Series

IPL hair removal device: be hair-free for longer

BRI955/00

# Highlights

### 2 x a month for fast results



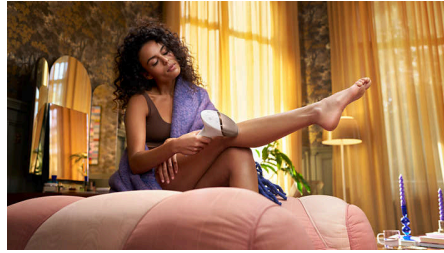
Get started with the initial phase of 4 treatments only every 2 weeks — that's half as many treatments as other brands. Then touch up monthly to maintain the results.

### SenseIQ technology



Lumea 9000 Series has five easily adjustable light settings. Our SmartSkin sensor reads your skin tone and helps you find the most comfortable setting. Intelligent attachments adapt treatment for each body area.

### Cordless if you want



Philips Lumea is designed to be convenient and easy to use. Use the device corded for fast treatment on large body areas, like your legs, or go with the cordless battery mode to treat hard-to-reach body areas with precision.

### 3 smart attachments

Specially designed attachments perfectly fit the curves of your body and trigger the most effective programmes for each body area when they are connected. Face: Flat design and small window with UV filter. Body: Curved inward with a large window. Precision: Curved outward for hard-to-reach areas.

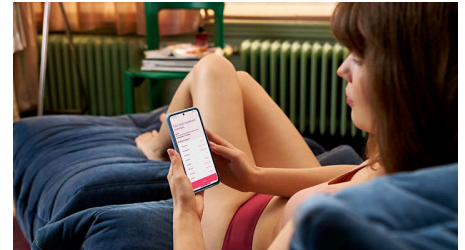
### Developed with dermatologists



As a leader in health technology, Philips developed Lumea IPL in consultation with dermatologists, for easy and effective use in the

safety of your home. Derived from technology used in professional salons, Lumea IPL offers gentle treatment, even on sensitive areas.

### Philips Lumea IPL app



Our free coaching app helps you plan and stick to your treatment schedule, then takes you through each session step by step. Downloaded by more than 2.1 million users.

### For most skin and hair types



IPL needs contrast between the pigment in the hair colour and the pigment in the skin tone, it therefore works on naturally dark blonde, brown and black hair and on skin tones from fair to dark brown (I-V).

# Philips Lumea IPL 9000 Series

IPL hair removal device: be hair-free for longer

BRI955/00

## Specifications

### Technical specs. attachments

**Body treatment attachment:** Shape: Convex curved, Window size: 4.1 cm<sup>2</sup>, Tailored treatment for body: legs, arms and stomach

**Face treatment attachment:** Shape: Flat, Window size: 2 cm<sup>2</sup>, extra filter, Tailored treatment for face: upper lip, chin and jawline

**Precision treatment attachment:** Shape: Concave curved, Window size: 3 cm<sup>2</sup>, Tailored treatment for bikini and underarm areas

### Safety and adjustable settings

**Integrated UV filter:** Protects skin from UV light

**5 light energy settings:** Adjustable to your individual skin tone

**Integrated safety system:** Prevents unintentional

flashing

**Skin Tone sensor:** Detects your skin tone

**SmartSkin sensor:** The right setting on demand

### Application mode

**Slide and Flash:** For quick application

**Stamp and Flash:** For treatment on small areas

**Corded/cordless use:** Both cordless and corded use

### Technical specifications

**Voltage:** 100–240 V

**Battery type:** Rechargeable battery

**High performance lamp:** Built to last, 450,000 flashes, equivalent to 39 years of lamp lifetime\*\*

### Service

**Warranty:** 2 year global warranty + 3 extra years of warranty upon product registration within 90 days

### Items included

**Instructions for use:** User manual

**Storage:** Luxury pouch

**Adapter:** 19.5 V / 4000 mA

### Application time

**Underarms:** 2.5 min

**Bikini line:** 2 min

**Face areas:** 1.5 min

**Lower legs:** 8.5 min



\* \* After 3 treatments. Median result 86% hair reduction on lower legs at 18 months. Individual results may vary. Based on a survey of 90 consumers.

\* \* When following the treatment schedule. Calculated for use on lower legs, bikini, armpits and face. The lamp lifetime does not extend the Philips 2-year worldwide guarantee