



# AC1200 Dual Band Wi-Fi Router

3in1:  
Router,  
Access Point,  
Range Extender

Archer C50



Dual-Band Wi-Fi  
867 Mbps + 300 Mbps†



Extensive Range  
with Beamforming



IPTV and 4K TV  
Supported



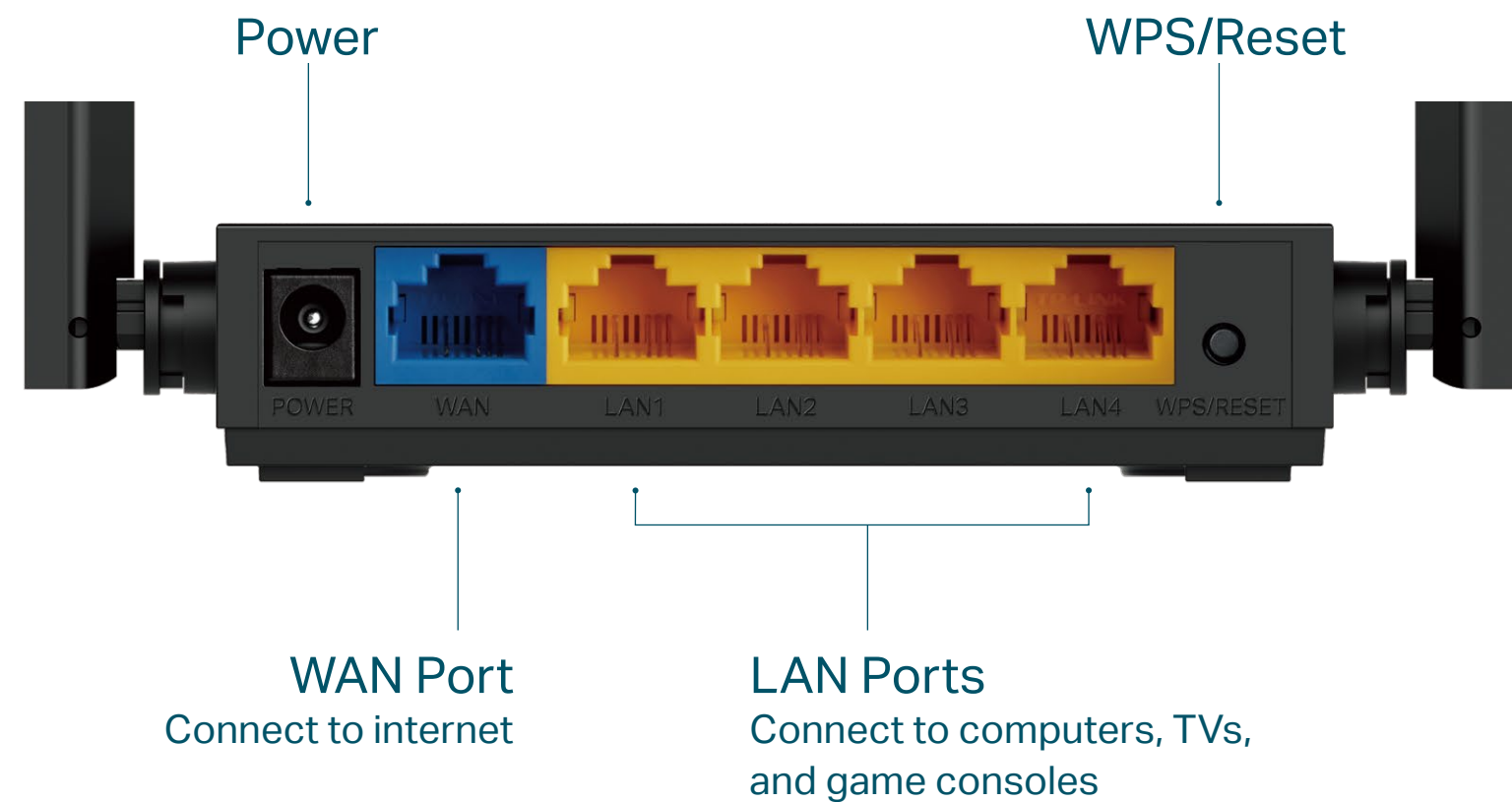
Multiple-Modes



# Highlights

## Fast Connections

Enjoy internet with the dual-band Wi-Fi and 4 fast LAN ports. Equipped with 4 omnidirectional antennas, Archer C50 generates a 2.4 GHz Wi-Fi across your house and a fast 5 GHz Wi-Fi, letting the whole family enjoy reliable Wi-Fi on every device.



## 3 Modes in 1

### Router Mode (Default)

Plug in an Ethernet cable to instantly create a private wireless network and share internet access with all your Wi-Fi devices.



### Access Point Mode

Transform your existing wired network into a wireless one.



### Range Extender Mode

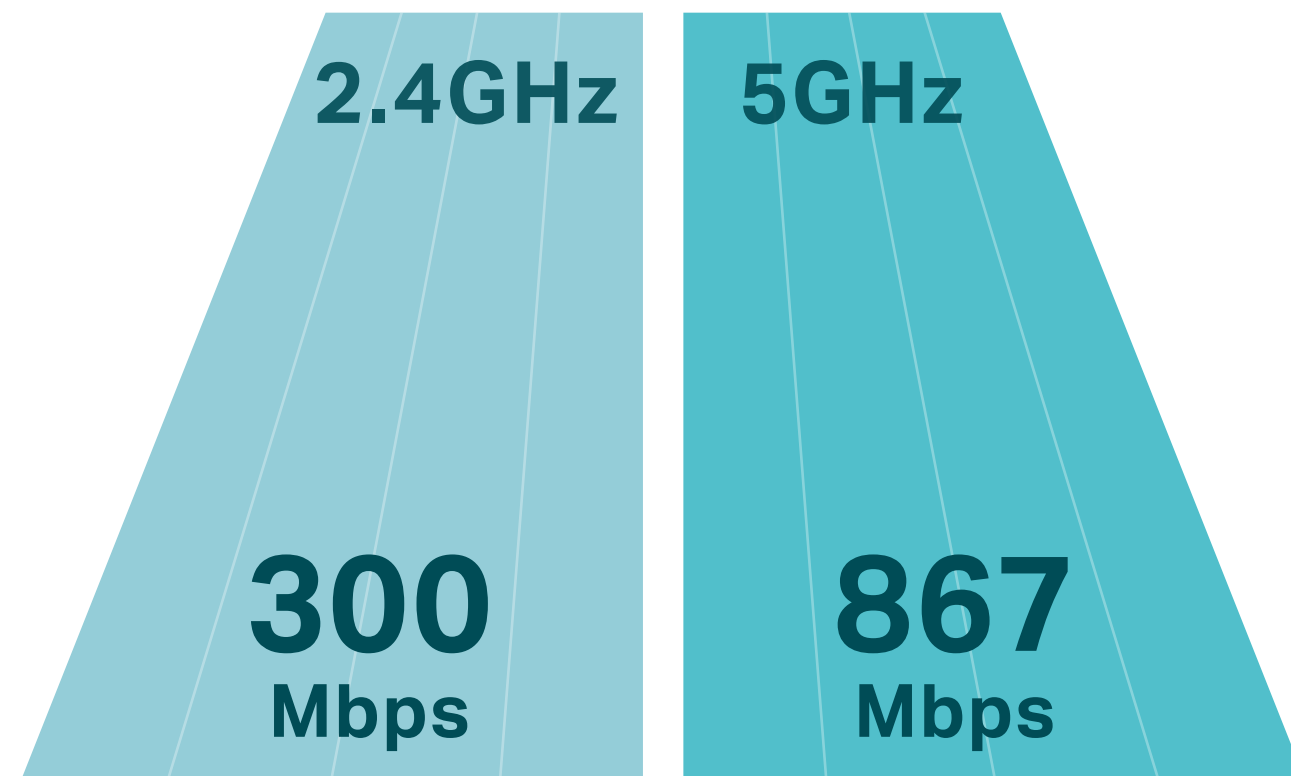
Boost the existing wireless coverage in your house.



# Highlights

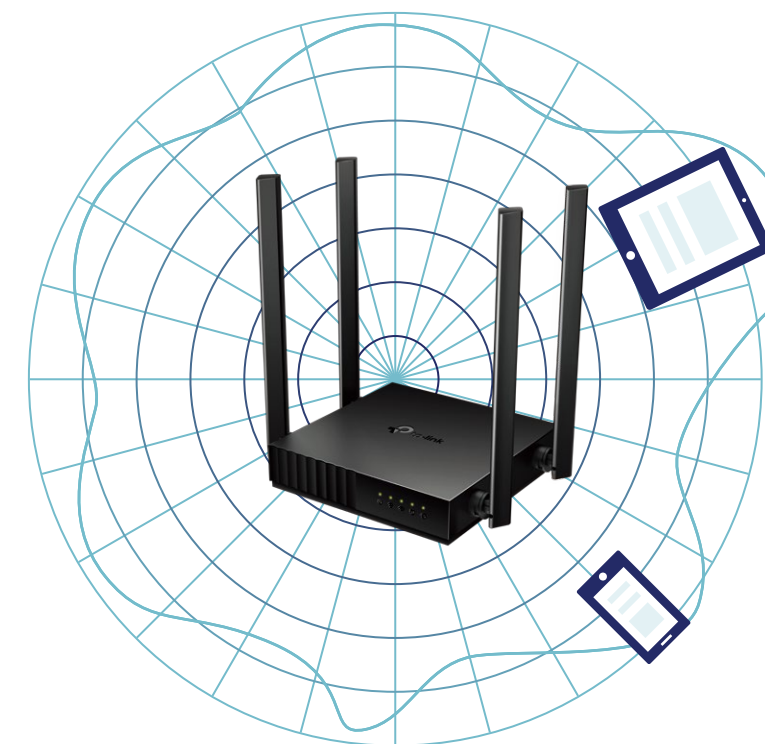
## Wi-Fi Speeds Ideal for 4K

867 Mbps on 5 GHz and 300 Mbps on 2.4 GHz are ideal for both everyday tasks and 4K streaming without buffering.†

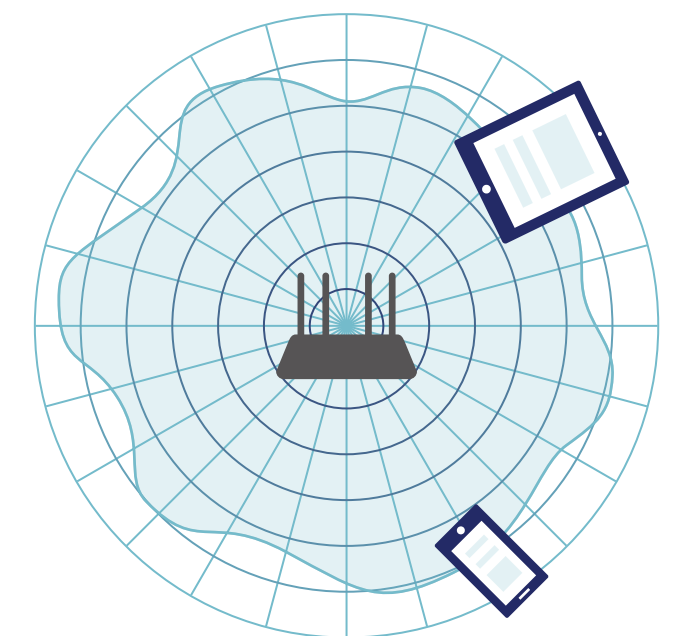


## Beamforming

Beamforming detect the location of your connected devices and concentrates signals towards them to optimize wireless connections.



Archer C50

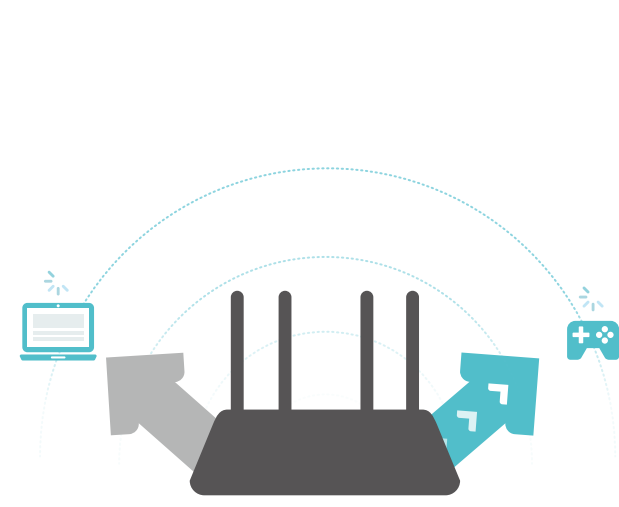


Regular Router

# Highlights

## MU-MIMO

MU-MIMO technology serves multiple devices at once, reducing wait time, and making each stream more efficient.†



**Traditional Router**



**MU-MIMO Router**

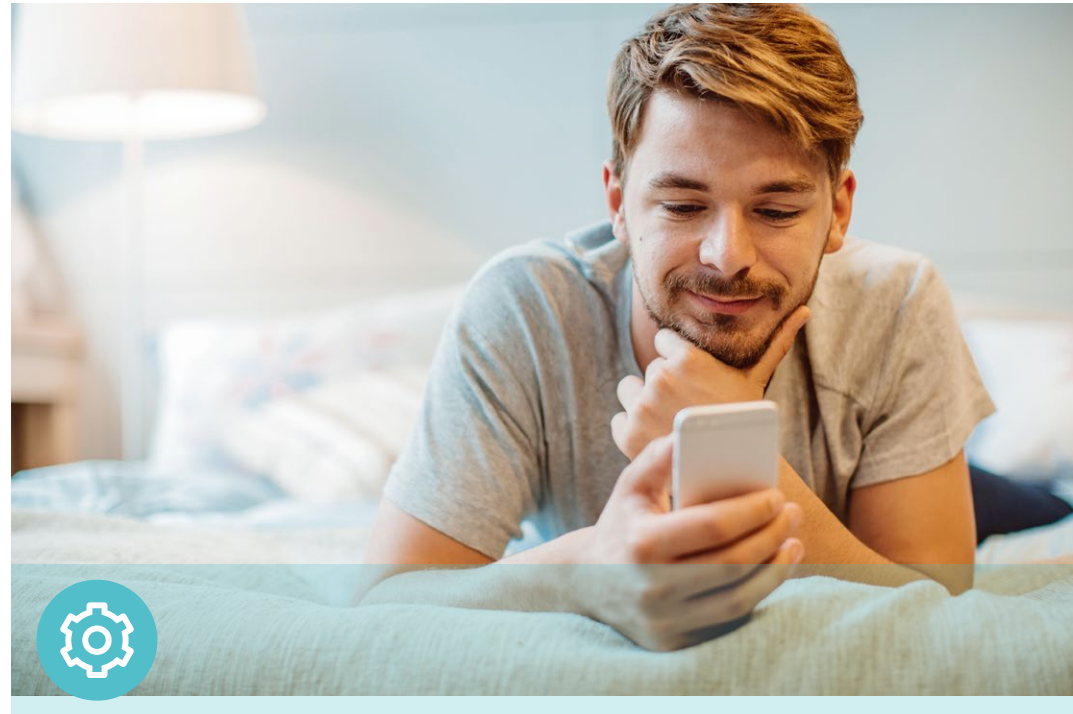
## Versatile Management

Block inappropriate content and set daily limits for the total time children/staff spend online through Parental Controls. Guest Network creates a separate access point for guests, to ensure your privacy is secure.





# Features



## Ease of Use

- WPS – Make secure wireless connection quick and easy with the push of a button
- Compact and Mountable – Designed to conserve space and complement any décor.
- Intuitive Web UI – Ensure quick and simple installation without hassle
- Hassle-free Management with Tether App – Network management is made easy with the TP-Link Tether App, available on any Android or iOS device



## Reliability

- Ultimate Wireless Speed – 300 Mbps on 2.4 GHz and 867 Mbps on 5 GHz Wi-Fi speed for lag-free work
- 802.11ac – Backward compatible with 802.11b/g/n products
- IPTV – Support IGMP Proxy/Snooping, Bridge and Tag VLAN to optimize IPTV streaming
- QoS– Advanced QoS makes it easier for you to manage the bandwidth of connected devices
- IPV6 – Supports IPV6 to work with more ISPs



## Security

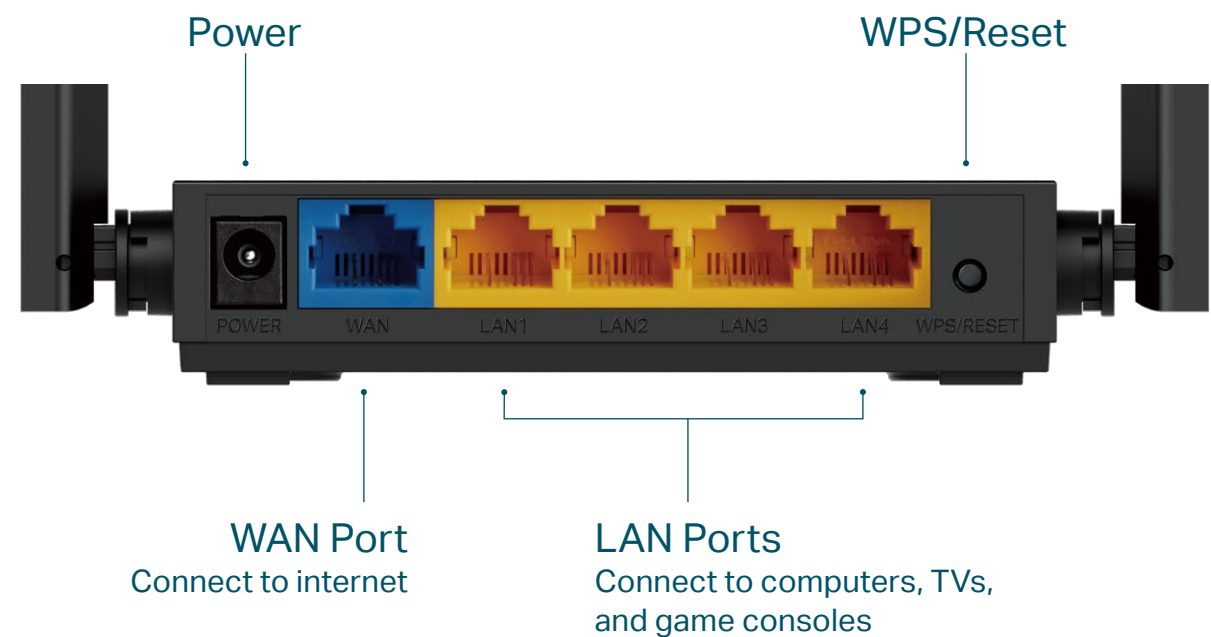
- Guest Network – Provide separate access for guests while securing the home network
- Access Control – Establish a whitelist or blacklist to allow or block certain devices from accessing the internet
- Parental Controls – Manage when and how connected devices can access the internet
- Encryptions for Secure Network – WPA-PSK/WPA2-PSK encryptions provide active protection against security threats



# Specifications

## Hardware

- Ethernet Ports: 4 x 10/100Mbps LAN Ports, 1 x 10/100Mbps WAN Port
- Buttons: Reset/WPS Button
- Antennas: 4 Fixed Omni Directional Antennas
- External Power Supply: 9VDC/0.85A
- Dimensions (W x D x H): 4.5x4.2x1.0 in. (115x106.7x24.3 mm)



## Wireless

- Wireless Standards: IEEE 802.11ac/n/a 5GHz, IEEE 802.11b/g/n 2.4GHz
- Frequency: 2.4GHz and 5GHz
- Signal Rate:
  - 5 GHz: Up to 867 Mbps
  - 2.4 GHz: Up to 300 Mbps
- Reception Sensitivity:
  - 5GHz:
    - 11a 54M: -76dBm; 11ac VHT20 MCS8: -70dBm;
    - 11ac VHT40 MCS9: -65.5dBm; 11ac VHT80 MCS9: -61.5dBm
  - 2.4GHz:
    - 11g 54M: -76dBm; 11n HT20 MCS7: -74dBm;
    - 11n HT40 MCS7: -71dBm
- Wireless Function: Enable/Disable Wireless Radio, WMM
- Wireless Security: 64/128-bit WEP, WPA / WPA2, WPA-PSK / WPA2-PSK encryption

# Specifications

## Software

- Operation Modes: Wireless Router, Range Extender, Access Point
- WAN Type: Dynamic IP, Static IP, PPPoE, PPTP(Dual Access), L2TP(Dual Access)
- DHCP: DHCP Server, DHCP Client List, Address Reservation
- Quality of Service: WMM, Bandwidth Control
- NAT Forwarding: Port Forwarding, Port Triggering, UPnP, DMZ
- Dynamic DNS: DynDns, NO-IP
- Firewall Security: SPI Firewall, IP and MAC Address Binding
- Protocols: IPv4, IPv6
- Management: Parental Controls, Access Control, Local Management, Remote Management
- Guest Network: 2.4 GHz Guest Network, 5 GHz Guest Network

## Others

- Certification  
FCC, CE, RoHS
- Requirements  
Internet Explorer 11+, Firefox 12.0+, Chrome 20.0+, Safari 4.0+, or other JavaScript-enabled browser  
Cable or DSL Modem (if needed)  
Subscription with an Internet Service Provider (for internet access)
- Environment  
Operating Temperature: 0°C~40°C (32°F ~104°F)  
Storage Temperature: -40°C~60°C (-40°F ~140°F)  
Operating Humidity: 10%~90% non-condensing  
Storage Humidity: 5%~90% non-condensing
- Package Contents  
Wireless Router Archer C50  
Power Adapter  
RJ-45 Ethernet Cable Quick  
Installation Guide



For more information, please visit

[https://www.tp-link.com/products/details/?model=Archer+C50\\_V6](https://www.tp-link.com/products/details/?model=Archer+C50_V6)

or scan the QR code left

©2021 TP-Link

\*Maximum wireless signal rates are the physical rates derived from IEEE Standard 802.11 specifications. Actual wireless data throughput and wireless coverage are not guaranteed and will vary as a result of network conditions, client limitations, and environmental factors, including building materials, obstacles, volume and density of traffic, and client location.

[www.tp-link.com](http://www.tp-link.com)

TP-Link AC1200 Dual Band Wi-Fi Router Archer C50