

# OptiPlex XE3 Small Form Factor

## Service Manual



## Notes, cautions, and warnings

 **NOTE:** A NOTE indicates important information that helps you make better use of your product.

 **CAUTION:** A CAUTION indicates either potential damage to hardware or loss of data and tells you how to avoid the problem.

 **WARNING:** A WARNING indicates a potential for property damage, personal injury, or death.

© 2018 Dell Inc. or its subsidiaries. All rights reserved. Dell, EMC, and other trademarks are trademarks of Dell Inc. or its subsidiaries. Other trademarks may be trademarks of their respective owners.

# Working on your computer

## Safety instructions

Use the following safety guidelines to protect your computer from potential damage and to ensure your personal safety. Unless otherwise noted, each procedure included in this document assumes that the following conditions exist:

- You have read the safety information that shipped with your computer.
- A component can be replaced or, if purchased separately, installed by performing the removal procedure in reverse order.

**⚠ WARNING:** Disconnect all power sources before opening the computer cover or panels. After you finish working inside the computer, replace all covers, panels, and screws before connecting to the power source.

**⚠ WARNING:** Before working inside your computer, read the safety information that shipped with your computer. For additional safety best practices information, see the Regulatory Compliance Homepage at [www.Dell.com/regulatory\\_compliance](http://www.Dell.com/regulatory_compliance)

**⚠ CAUTION:** Many repairs may only be done by a certified service technician. You should only perform troubleshooting and simple repairs as authorized in your product documentation, or as directed by the online or telephone service and support team. Damage due to servicing that is not authorized by Dell is not covered by your warranty. Read and follow the safety instructions that came with the product.

**⚠ CAUTION:** To avoid electrostatic discharge, ground yourself by using a wrist grounding strap or by periodically touching an unpainted metal surface at the same time as touching a connector on the back of the computer.



**⚠ CAUTION:** Handle components and cards with care. Do not touch the components or contacts on a card. Hold a card by its edges or by its metal mounting bracket. Hold a component such as a processor by its edges, not by its pins.

**⚠ CAUTION:** When you disconnect a cable, pull on its connector or on its pull-tab, not on the cable itself. Some cables have connectors with locking tabs; if you are disconnecting this type of cable, press in on the locking tabs before you disconnect the cable. As you pull connectors apart, keep them evenly aligned to avoid bending any connector pins. Also, before you connect a cable, ensure that both connectors are correctly oriented and aligned.

**ⓘ NOTE:** The color of your computer and certain components may appear differently than shown in this document.

## Turning off your computer — Windows 10

**⚠ CAUTION:** To avoid losing data, save and close all open files and exit all open programs before you turn off your computer or remove the side cover.

- 1 Click or tap .
- 2 Click or tap  and then click or tap **Shut down**.

**ⓘ NOTE:** Ensure that the computer and all attached devices are turned off. If your computer and attached devices did not automatically turn off when you shut down your operating system, press and hold the power button for about 6 seconds to turn them off.

## Before working inside your computer


To avoid damaging your computer, perform the following steps before you begin working inside the computer.

- 1 Ensure that you follow the [Safety Instruction](#).
- 2 Ensure that your work surface is flat and clean to prevent the computer cover from being scratched.

- 3 Turn off your computer.
- 4 Disconnect all network cables from the computer.

 **CAUTION:** To disconnect a network cable, first unplug the cable from your computer and then unplug the cable from the network device.

- 5 Disconnect your computer and all attached devices from their electrical outlets.
- 6 Press and hold the power button while the computer is unplugged to ground the system board.

 **NOTE:** To avoid electrostatic discharge, ground yourself by using a wrist grounding strap or by periodically touching an unpainted metal surface at the same time as touching a connector on the back of the computer.

## After working inside your computer

After you complete any replacement procedure, ensure that you connect any external devices, cards, and cables before turning on your computer.

- 1 Connect any telephone or network cables to your computer.

 **CAUTION:** To connect a network cable, first plug the cable into the network device and then plug it into the computer.

- 2 Connect your computer and all attached devices to their electrical outlets.
- 3 Turn on your computer.
- 4 If required, verify that the computer works correctly by running **ePSA diagnostics**.



# Technology and components

This chapter details the technology and components available in the system.

Topics:

- [DDR4](#)
- [USB features](#)
- [USB Type-C](#)
- [Advantages of DisplayPort over USB Type-C](#)
- [HDMI 2.0](#)

## DDR4

DDR4 (double data rate fourth generation) memory is a higher-speed successor to the DDR2 and DDR3 technologies and allows up to 512 GB in capacity, compared to the DDR3's maximum of 128 GB per DIMM. DDR4 synchronous dynamic random-access memory is keyed differently from both SDRAM and DDR to prevent the user from installing the wrong type of memory into the system.

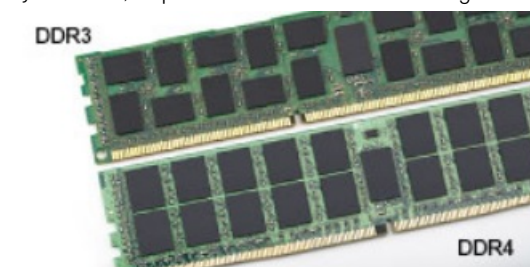
DDR4 needs 20 percent less or just 1.2 volts, compared to DDR3 which requires 1.5 volts of electrical power to operate. DDR4 also supports a new, deep power-down mode that allows the host device to go into standby without needing to refresh its memory. Deep power-down mode is expected to reduce standby power consumption by 40 to 50 percent.

## DDR4 Details

There are subtle differences between DDR3 and DDR4 memory modules, as listed below.

Key notch difference

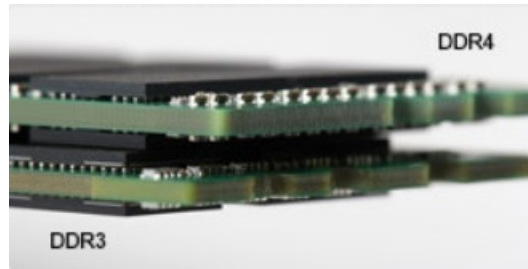
The key notch on a DDR4 module is in a different location from the key notch on a DDR3 module. Both notches are on the insertion edge but the notch location on the DDR4 is slightly different, to prevent the module from being installed into an incompatible board or platform.



**Figure 1. Notch difference**

Increased thickness

DDR4 modules are slightly thicker than DDR3, to accommodate more signal layers.



**Figure 2. Thickness difference**

Curved edge

DDR4 modules feature a curved edge to help with insertion and alleviate stress on the PCB during memory installation.



**Figure 3. Curved edge**

## Memory Errors

Memory errors on the system display the new ON-FLASH-FLASH or ON-FLASH-ON failure code. If all memory fails, the LCD does not turn on. Troubleshoot for possible memory failure by trying known good memory modules in the memory connectors on the bottom of the system or under the keyboard, as in some portable systems.

## USB features

Universal Serial Bus, or USB, was introduced in 1996. It dramatically simplified the connection between host computers and peripheral devices like mice, keyboards, external drivers, and printers.

Let's take a quick look on the USB evolution referencing to the table below.

**Table 1. USB evolution**

Type	Data Transfer Rate	Category	Introduction Year
USB 3.0/USB 3.1 Gen 1	5 Gbps	Super Speed	2010
USB 2.0	480 Mbps	High Speed	2000
USB 3.1 Gen 2	10 Gbps	Super Speed	2013

## USB 3.0/USB 3.1 Gen 1 (SuperSpeed USB)

For years, the USB 2.0 has been firmly entrenched as the de facto interface standard in the PC world with about 6 billion devices sold, and yet the need for more speed grows by ever faster computing hardware and ever greater bandwidth demands. The USB 3.0/USB 3.1 Gen 1

finally has the answer to the consumers' demands with a theoretically 10 times faster than its predecessor. In a nutshell, USB 3.1 Gen 1 features are as follows:

- Higher transfer rates (up to 5 Gbps)
- Increased maximum bus power and increased device current draw to better accommodate power-hungry devices
- New power management features
- Full-duplex data transfers and support for new transfer types
- Backward USB 2.0 compatibility
- New connectors and cable

The topics below cover some of the most commonly asked questions regarding USB 3.0/USB 3.1 Gen 1.

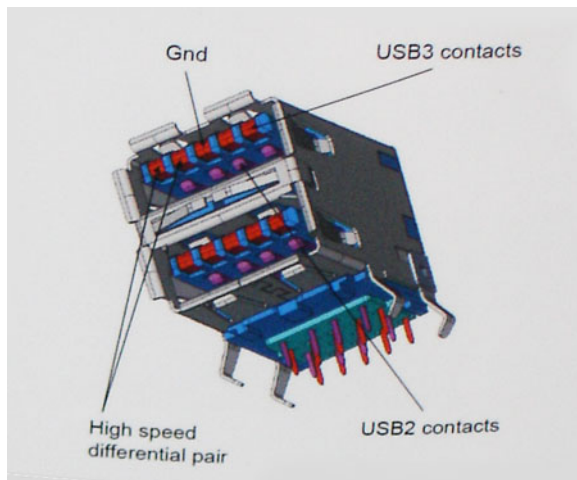


## Speed

Currently, there are 3 speed modes defined by the latest USB 3.0/USB 3.1 Gen 1 specification. They are Super-Speed, Hi-Speed and Full-Speed. The new SuperSpeed mode has a transfer rate of 4.8Gbps. While the specification retains Hi-Speed, and Full-Speed USB mode, commonly known as USB 2.0 and 1.1 respectively, the slower modes still operate at 480Mbps and 12Mbps respectively and are kept to maintain backward compatibility.

USB 3.0/USB 3.1 Gen 1 achieves the much higher performance by the technical changes below:

- An additional physical bus that is added in parallel with the existing USB 2.0 bus (refer to the picture below).
- USB 2.0 previously had four wires (power, ground, and a pair for differential data); USB 3.0/USB 3.1 Gen 1 adds four more for two pairs of differential signals (receive and transmit) for a combined total of eight connections in the connectors and cabling.
- USB 3.0/USB 3.1 Gen 1 utilizes the bidirectional data interface, rather than USB 2.0's half-duplex arrangement. This gives a 10-fold increase in theoretical bandwidth.



With today's ever increasing demands placed on data transfers with high-definition video content, terabyte storage devices, high megapixel count digital cameras etc., USB 2.0 may not be fast enough. Furthermore, no USB 2.0 connection could ever come close to the 480Mbps theoretical maximum throughput, making data transfer at around 320Mbps (40MB/s) — the actual real-world maximum. Similarly, USB 3.0/USB 3.1 Gen 1 connections will never achieve 4.8Gbps. We will likely see a real-world maximum rate of 400MB/s with overheads. At this speed, USB 3.0/USB 3.1 Gen 1 is a 10x improvement over USB 2.0.

# Applications

USB 3.0/USB 3.1 Gen 1 opens up the laneways and provides more headroom for devices to deliver a better overall experience. Where USB video was barely tolerable previously (both from a maximum resolution, latency, and video compression perspective), it's easy to imagine that with 5-10 times the bandwidth available, USB video solutions should work that much better. Single-link DVI requires almost 2Gbps throughput. Where 480Mbps was limiting, 5Gbps is more than promising. With its promised 4.8Gbps speed, the standard will find its way into some products that previously weren't USB territory, like external RAID storage systems.

Listed below are some of the available SuperSpeed USB 3.0/USB 3.1 Gen 1 products:

- External Desktop USB 3.0/USB 3.1 Gen 1 Hard Drives
- Portable USB 3.0/USB 3.1 Gen 1 Hard Drives
- USB 3.0/USB 3.1 Gen 1 Drive Docks & Adapters
- USB 3.0/USB 3.1 Gen 1 Flash Drives & Readers
- USB 3.0/USB 3.1 Gen 1 Solid-state Drives
- USB 3.0/USB 3.1 Gen 1 RAIDs
- Optical Media Drives
- Multimedia Devices
- Networking
- USB 3.0/USB 3.1 Gen 1 Adapter Cards & Hubs

# Compatibility

The good news is that USB 3.0/USB 3.1 Gen 1 has been carefully planned from the start to peacefully co-exist with USB 2.0. First of all, while USB 3.0/USB 3.1 Gen 1 specifies new physical connections and thus new cables to take advantage of the higher speed capability of the new protocol, the connector itself remains the same rectangular shape with the four USB 2.0 contacts in the exact same location as before. Five new connections to carry receive and transmitted data independently are present on USB 3.0/USB 3.1 Gen 1 cables and only come into contact when connected to a proper SuperSpeed USB connection.

Windows 8/10 will be bringing native support for USB 3.1 Gen 1 controllers. This is in contrast to previous versions of Windows, which continue to require separate drivers for USB 3.0/USB 3.1 Gen 1 controllers.

Microsoft announced that Windows 7 would have USB 3.1 Gen 1 support, perhaps not on its immediate release, but in a subsequent Service Pack or update. It is not out of the question to think that following a successful release of USB 3.0/USB 3.1 Gen 1 support in Windows 7, SuperSpeed support would trickle down to Vista. Microsoft has confirmed this by stating that most of their partners share the opinion that Vista should also support USB 3.0/USB 3.1 Gen 1.

# USB Type-C

USB Type-C is a new, tiny physical connector. The connector itself can support various exciting new USB standards like USB 3.1 and USB power delivery (USB PD).

# Alternate Mode

USB Type-C is a new connector standard that is very small. It is about a third the size of an old USB Type-A plug. This is a single connector standard that every device should be able to use. USB Type-C ports can support a variety of different protocols using "alternate modes," which allows you to have adapters that can output HDMI, VGA, DisplayPort, or other types of connections from that single USB port

# USB Power Delivery

The USB PD specification is also closely intertwined with USB Type-C. Currently, smartphones, tablets, and other mobile devices often use a USB connection to charge. A USB 2.0 connection provides up to 2.5 watts of power — that'll charge your phone, but that's about it. A laptop might require up to 60 watts, for example. The USB Power Delivery specification ups this power delivery to 100 watts. It's bi-directional, so a device can either send or receive power. And this power can be transferred at the same time the device is transmitting data across the connection.

This could spell the end of all those proprietary laptop charging cables, with everything charging via a standard USB connection. You could charge your laptop from one of those portable battery packs you charge your smartphones and other portable devices from today. You could plug your laptop into an external display connected to a power cable, and that external display would charge your laptop as you used it as an external display — all via the one little USB Type-C connection. To use this, the device and the cable have to support USB Power Delivery. Just having a USB Type-C connection doesn't necessarily mean they do.

## USB Type-C and USB 3.1

USB 3.1 is a new USB standard. USB 3's theoretical bandwidth is 5 Gbps same as of USB 3.1 Gen 1, while USB 3.1 Gen 2's bandwidth is 10 Gbps. That's double the bandwidth, as fast as a first-generation Thunderbolt connector. USB Type-C isn't the same thing as USB 3.1. USB Type-C is just a connector shape, and the underlying technology could just be USB 2 or USB 3.0. In fact, Nokia's N1 Android tablet uses a USB Type-C connector, but underneath it's all USB 2.0 — not even USB 3.0. However, these technologies are closely related.

## Advantages of DisplayPort over USB Type-C

- Full DisplayPort audio/video (A/V) performance (up to 4K at 60Hz)
- Reversible plug orientation and cable direction
- Backwards compatibility to VGA, DVI with adaptors
- SuperSpeed USB (USB 3.1) data
- Supports HDMI 2.0a and is backwards compatible with previous versions

## HDMI 2.0

This topic explains the HDMI 2.0 and its features along with the advantages.

HDMI (High-Definition Multimedia Interface) is an industry-supported, uncompressed, all-digital audio/video interface. HDMI provides an interface between any compatible digital audio/video source, such as a DVD player, or A/V receiver and a compatible digital audio and/or video monitor, such as a digital TV (DTV). The intended applications for HDMI TVs, and DVD players. The primary advantage is cable reduction and content protection provisions. HDMI supports standard, enhanced, or high-definition video, plus multichannel digital audio on a single cable.

## HDMI 2.0 Features

- **HDMI Ethernet Channel** - Adds high-speed networking to an HDMI link, allowing users to take full advantage of their IP-enabled devices without a separate Ethernet cable
- **Audio Return Channel** - Allows an HDMI-connected TV with a built-in tuner to send audio data "upstream" to a surround audio system, eliminating the need for a separate audio cable
- **3D** - Defines input/output protocols for major 3D video formats, paving the way for true 3D gaming and 3D home theater applications
- **Content Type** - Real-time signaling of content types between display and source devices, enabling a TV to optimize picture settings based on content type
- **Additional Color Spaces** - Adds support for additional color models used in digital photography and computer graphics
- **4K Support** - Enables video resolutions far beyond 1080p, supporting next-generation displays that will rival the Digital Cinema systems used in many commercial movie theaters

- **HDMI Micro Connector** - A new, smaller connector for phones and other portable devices, supporting video resolutions up to 1080p
- **Automotive Connection System** - New cables and connectors for automotive video systems, designed to meet the unique demands of the motoring environment while delivering true HD quality

## Advantages of HDMI

- Quality HDMI transfers uncompressed digital audio and video for the highest, crispest image quality.
- Low -cost HDMI provides the quality and functionality of a digital interface while also supporting uncompressed video formats in a simple, cost-effective manner
- Audio HDMI supports multiple audio formats from standard stereo to multichannel surround sound
- HDMI combines video and multichannel audio into a single cable, eliminating the cost, complexity, and confusion of multiple cables currently used in A/V systems
- HDMI supports communication between the video source (such as a DVD player) and the DTV, enabling new functionality

## Disassembly and reassembly

### Side cover

#### Removing the side cover

- 1 Follow the procedure in [Before working inside your computer](#).
- 2 To remove the cover:
  - a Slide the release latch on the back side of your system until it gives a click sound to unlock the side cover [1].
  - b Slide and lift the side cover from the system [2].



#### Installing the side cover

- 1 Place the cover on the computer and slide the cover towards the front of the system [1] until it clicks into place [2].





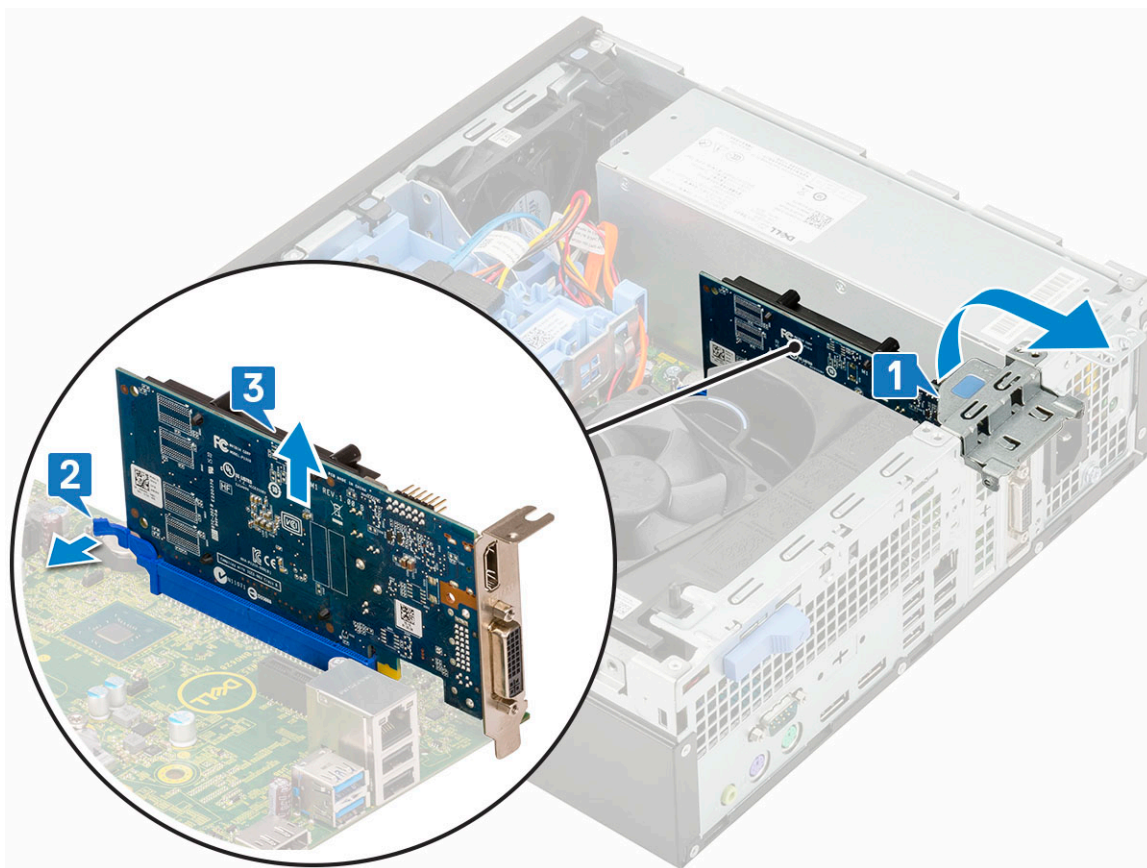
- 2 Follow the procedure in [After working inside your computer](#)

## Expansion card

### Removing expansion card

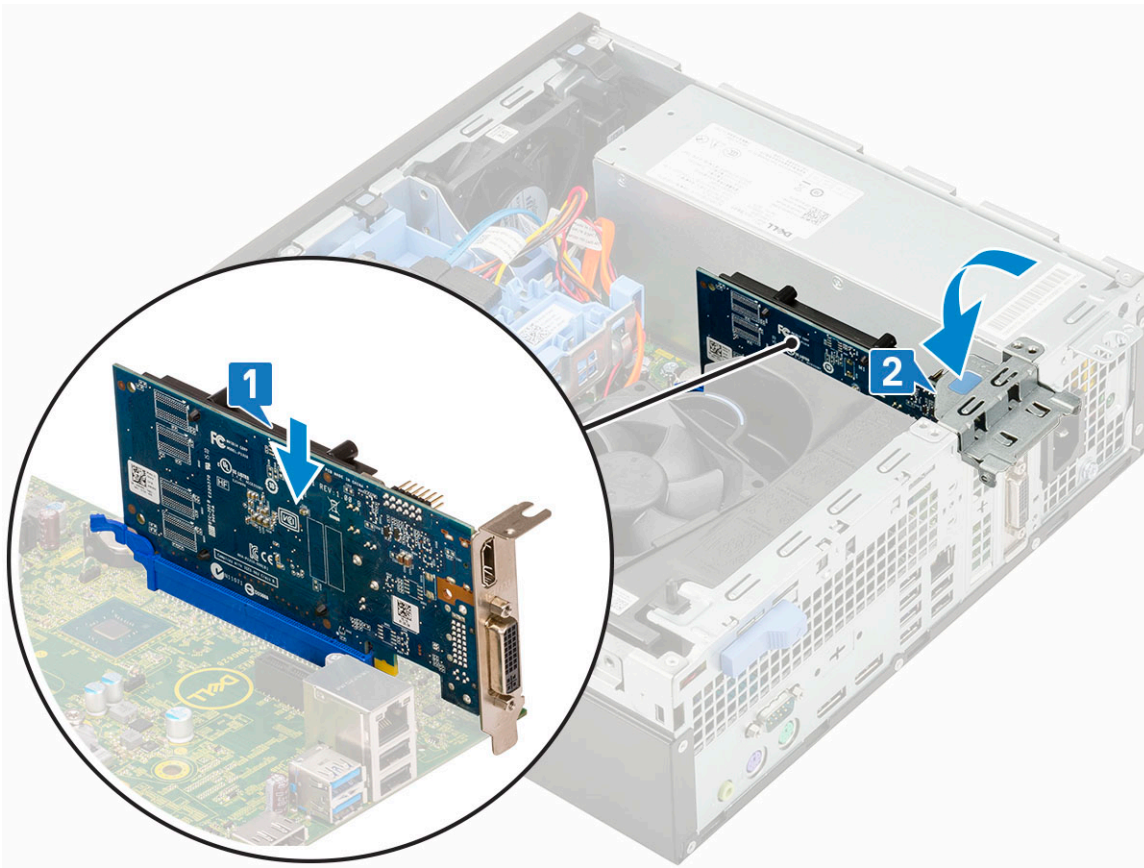
- 1 Follow the procedure in [Before working inside your computer](#).
- 2 Remove the [Side cover](#).
- 3 To remove the expansion card:
  - a Pull the metal tab to open the expansion card latch [1].
  - b Pull the release tab at the base of the expansion card [2].
  - c Disconnect and lift the expansion card away from the connector on the system board [3].





## Installing the expansion card

- 1 Insert the expansion card into the connector on the system board [1].
- 2 Press the expansion card until it clicks into place.
- 3 Close the expansion card latch and press it until it clicks into place [2].

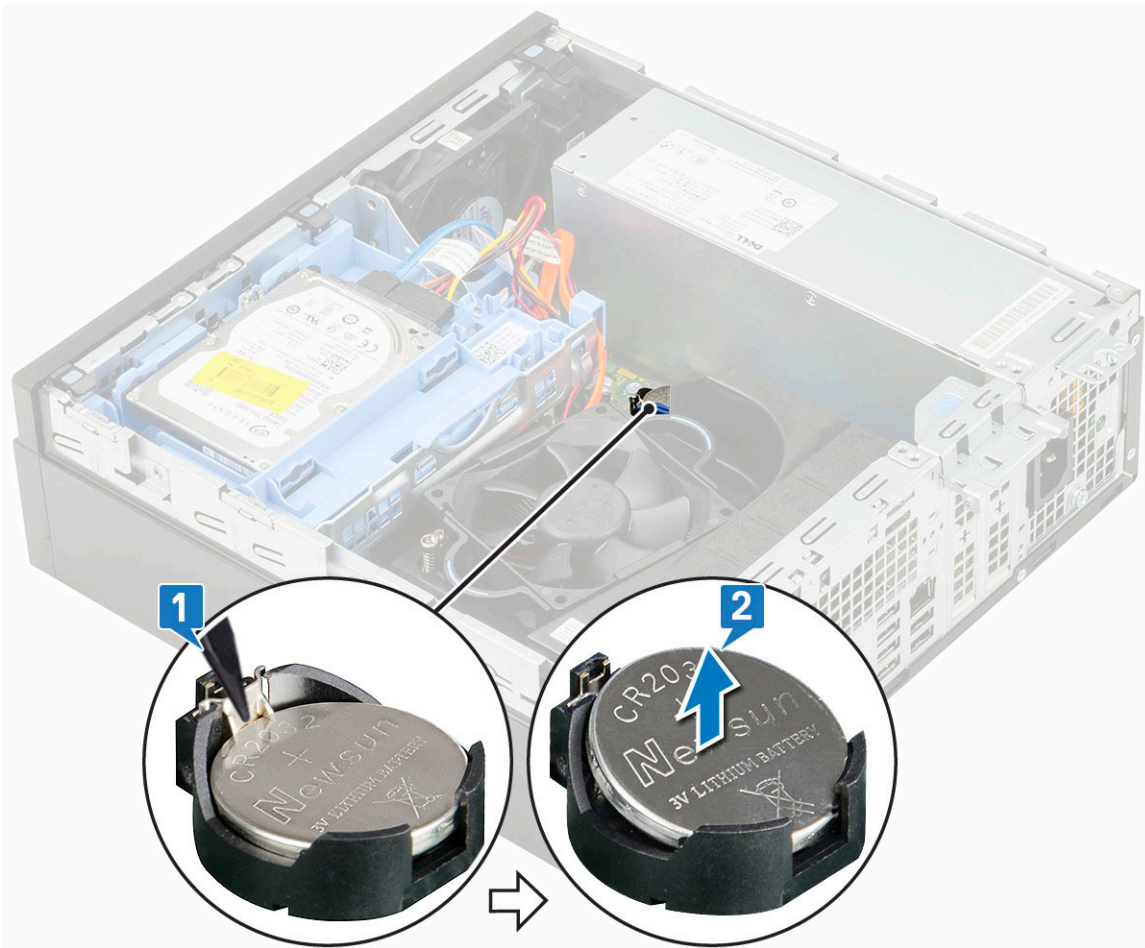


- 4 Install the [Side cover](#).
- 5 Follow the procedure in [After working inside your computer](#).

## Coin cell battery

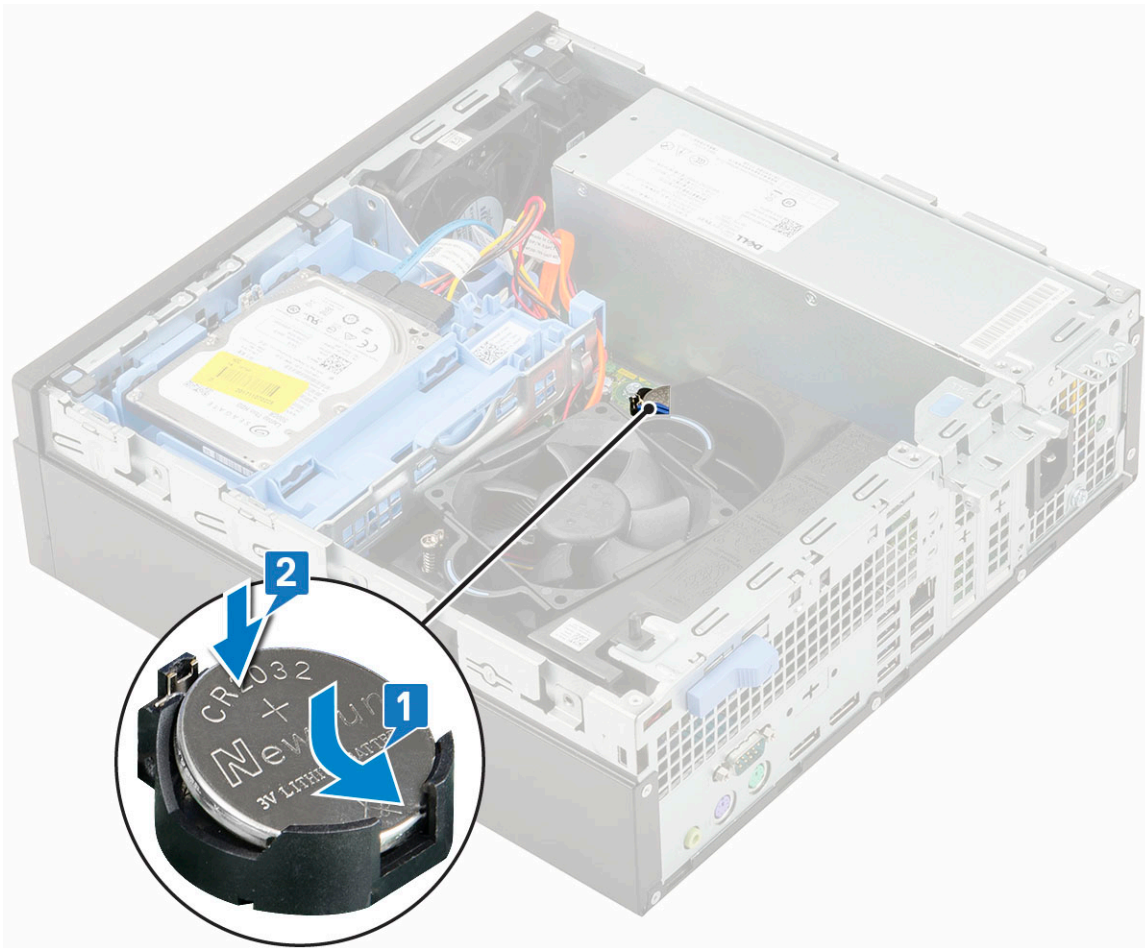
### Removing coin cell battery

- 1 Follow the procedure in [Before working inside your computer](#).
- 2 Remove the [Side cover](#).
- 3 To remove the coin cell battery:
  - a Using a plastic scribe press the release latch until the coin cell battery pops out [1].
  - b Remove the coin cell battery from the system [2].



## Installing the coin cell battery

- 1 Place the coin cell battery in its slot on the system board [1].
- 2 Press the battery into the connector until it locks into place [2].



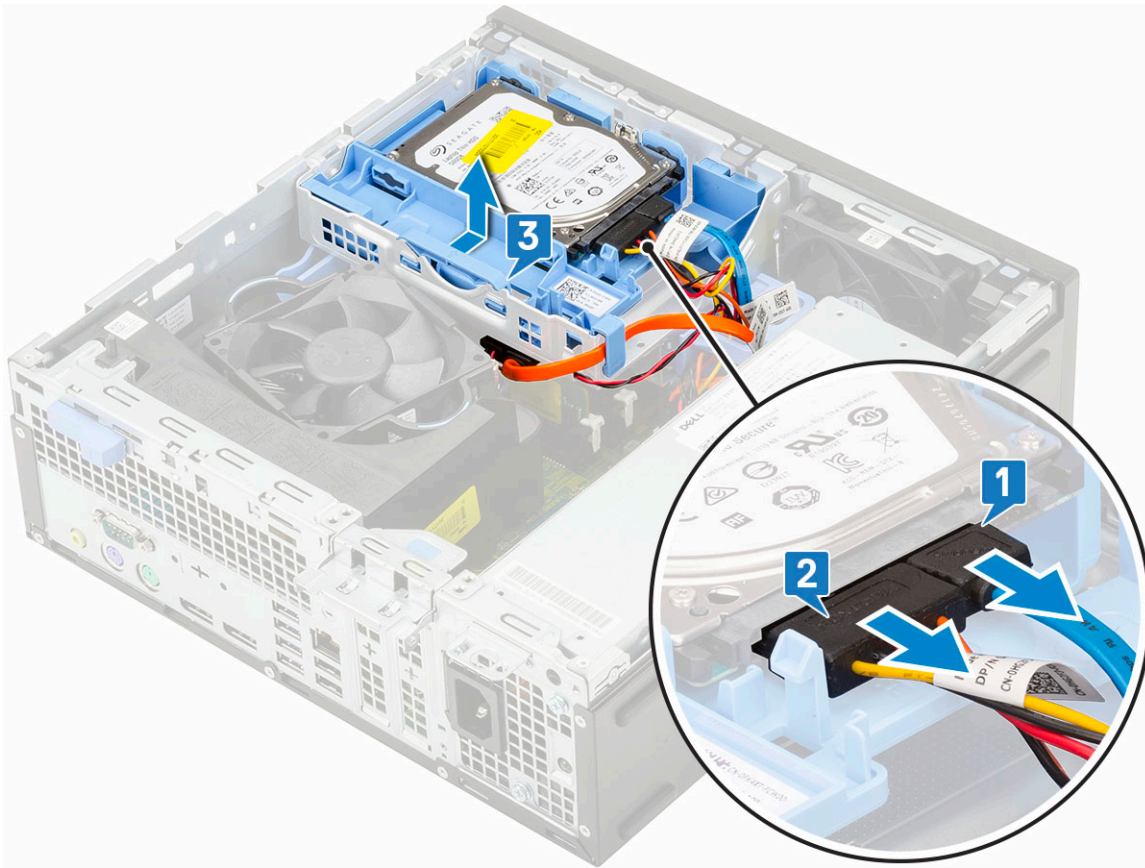
- 3 Install the [Side cover](#).
- 4 Follow the procedure in [After working inside your computer](#).

## Hard drive assembly

### Removing the hard drive assembly

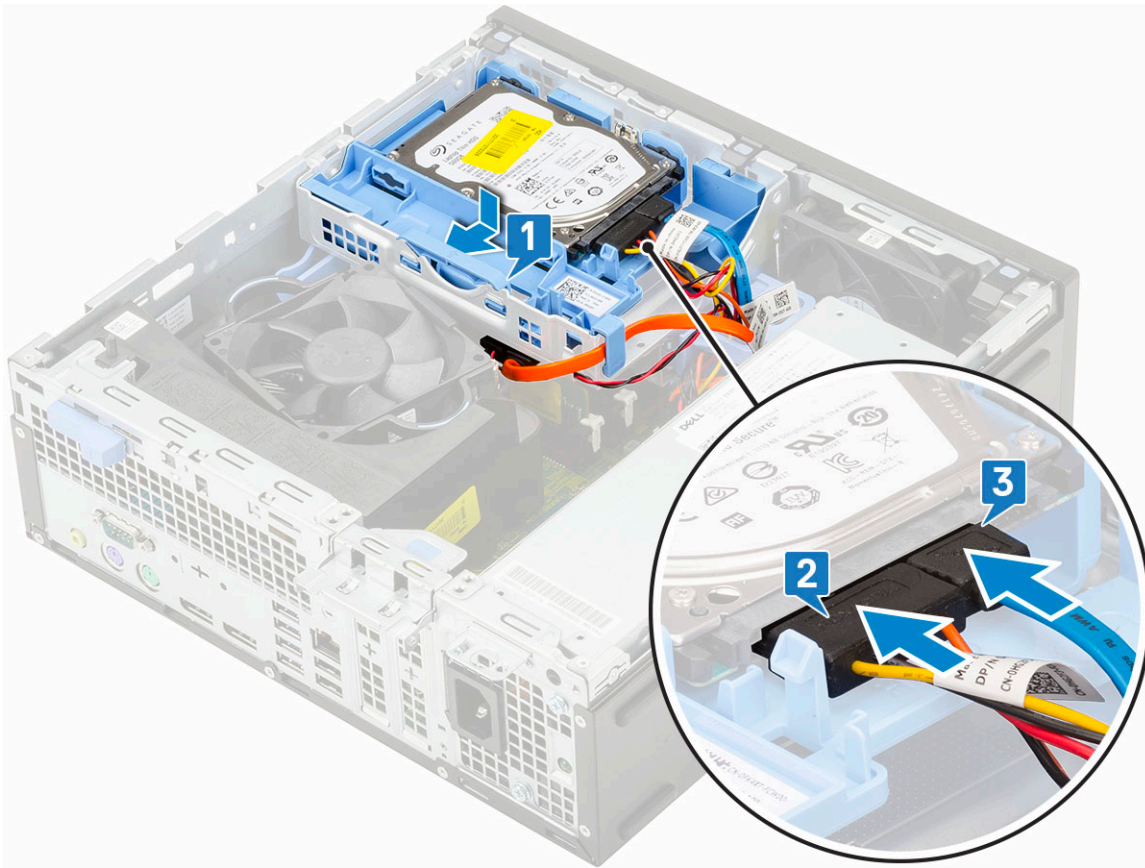
- 1 Follow the procedure in [Before working inside your computer](#).
- 2 Remove the [Side cover](#).
- 3 To remove the hard drive:
  - a Disconnect the hard drive data cable and power cable from the connectors on the hard drive [1, 2].
  - b Push the release tab and lift the hard drive assembly from the system [3].





## Installing the hard drive assembly

- 1 Align the tabs on the hard drive assembly with the slots on the chassis at 30 degree angle .
- 2 Press the hard drive assembly so that it gets secured to the hard drive and optical drive cage [1].
- 3 Connect the hard drive data cable and hard drive power cable to the connectors on the hard drive [2,3]

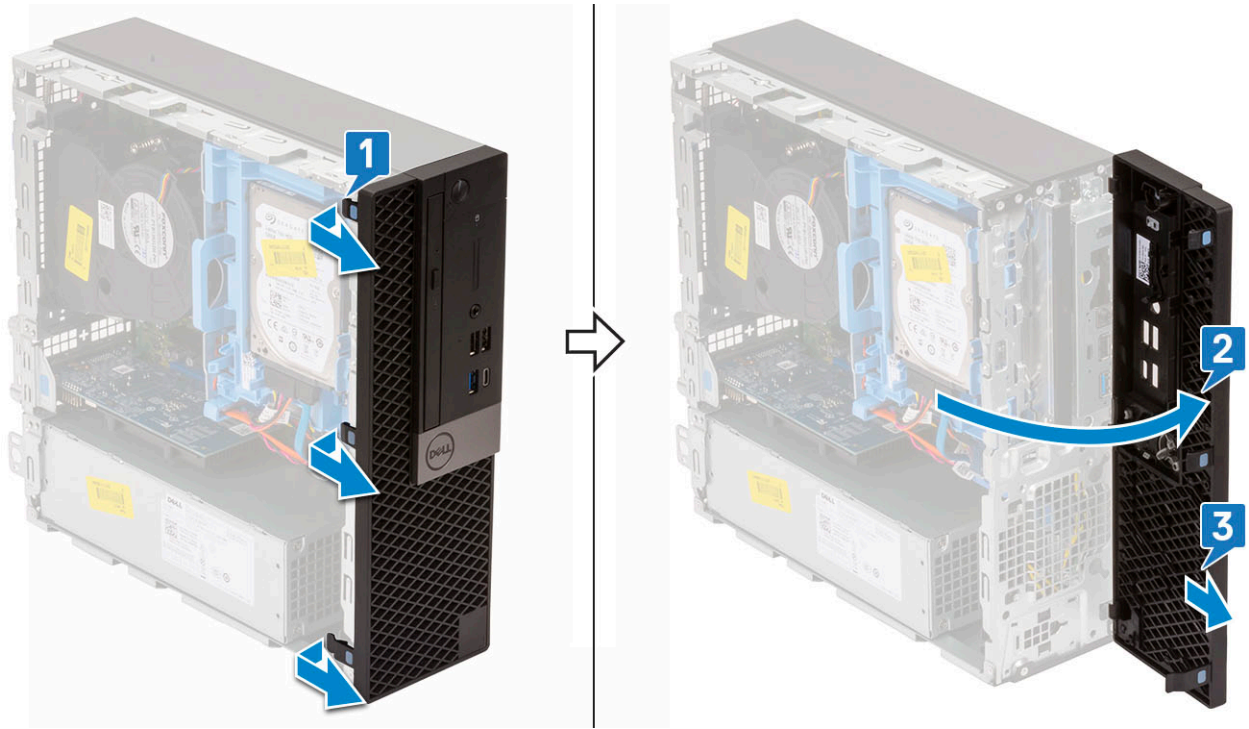


- 4 Install the [Side cover](#).
- 5 Follow the procedure in [After working inside your computer](#).

## Front Bezel

### Removing front bezel

- 1 Follow the procedure in [Before working inside your computer](#).
- 2 Remove the [Side cover](#).
- 3 To remove the front bezel:
  - a Pry the retention tabs to release the front bezel from the system [1].
  - b Rotate the front bezel away from the computer [2] and pull to release the hooks on the front bezel from the front-panel slots [3].



## Installing front bezel

- 1 Align the bezel and insert the retention tabs on the bezel into the slots on the system.
- 2 Press the bezel until the tabs clicks into place.



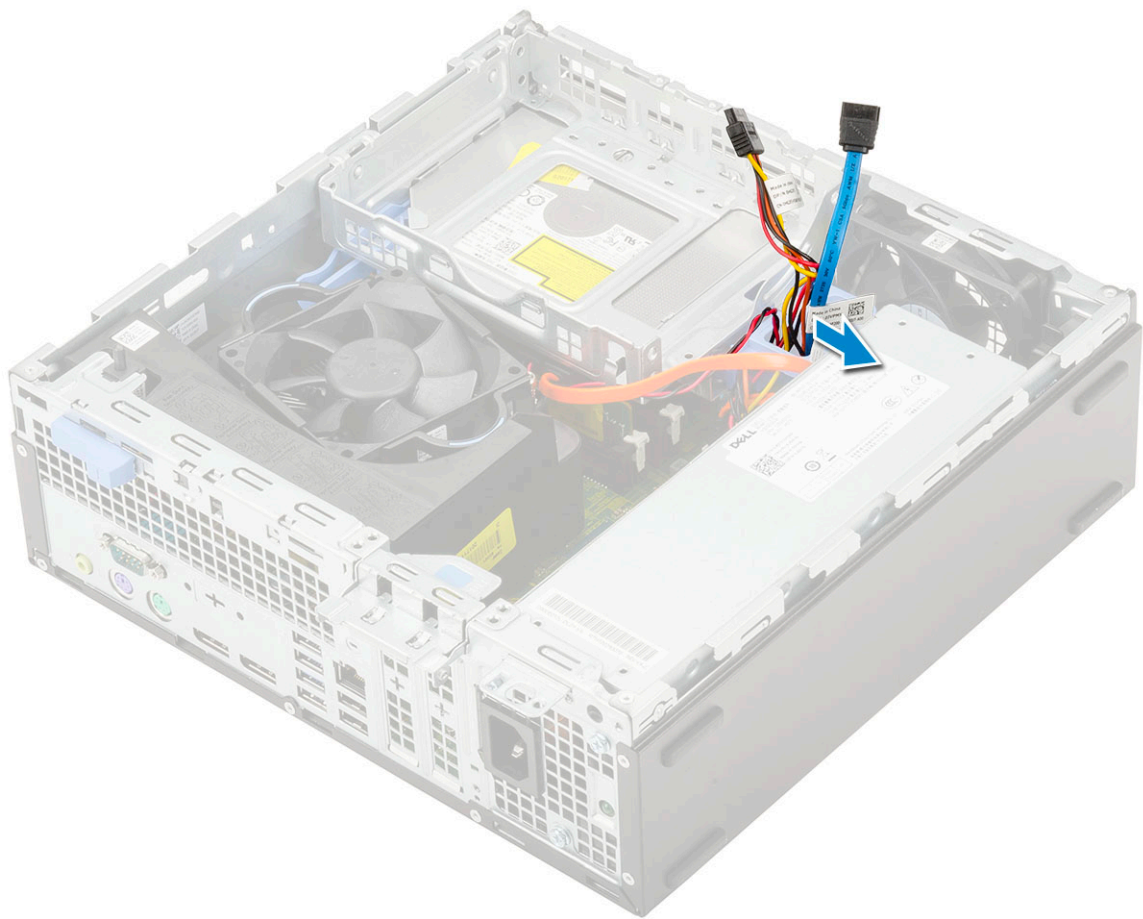
- 3 Install the [Side cover](#).
- 4 Follow the procedure in [After working inside your computer](#).

## Hard drive and optical drive module

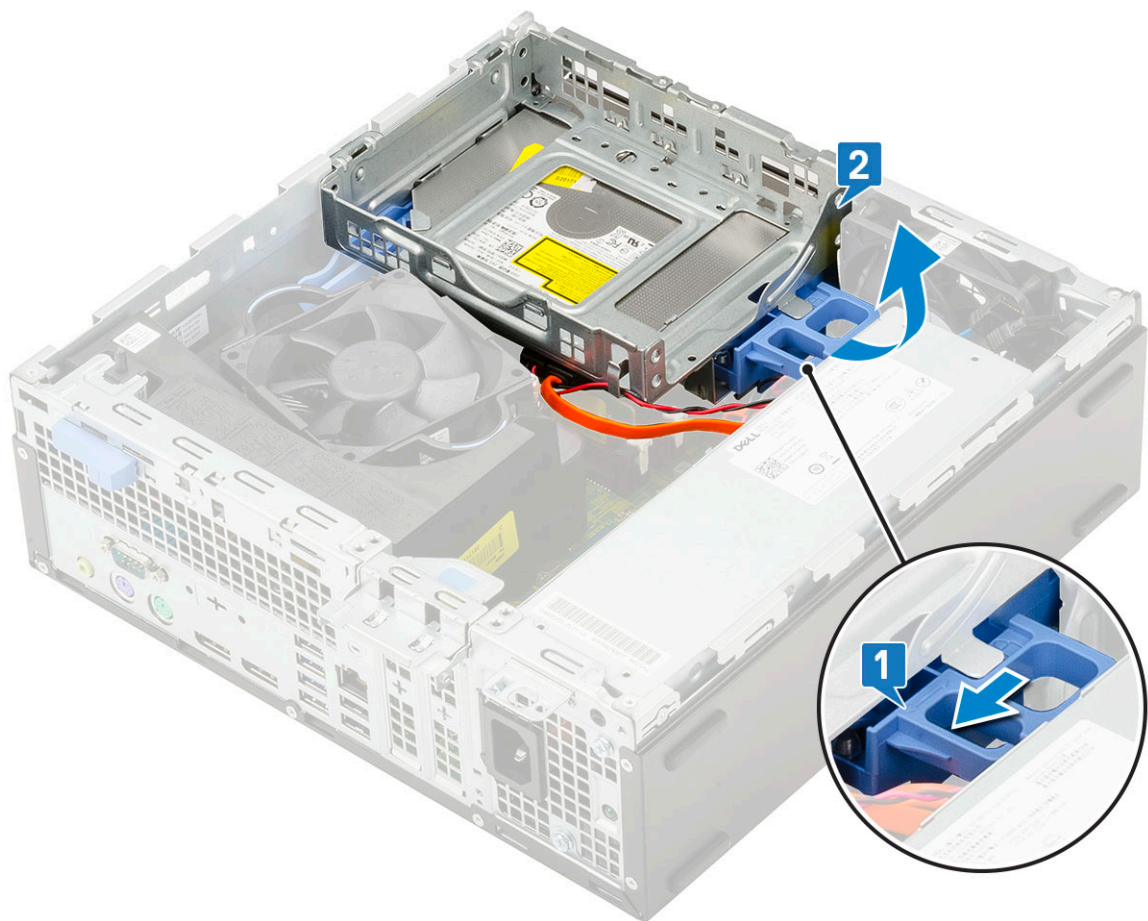
### Removing the hard drive and optical drive module

- 1 Follow the procedure in [Before working inside your computer](#).
- 2 Remove the:
  - a [Side cover](#)
  - b [Front bezel](#)
  - c [HDD assembly](#)
- 3 To release the hard drive and optical drive module:
  - a Unroute the optical drive cables and hard drive cables through the retention clip and HDD-ODD release tab respectively.

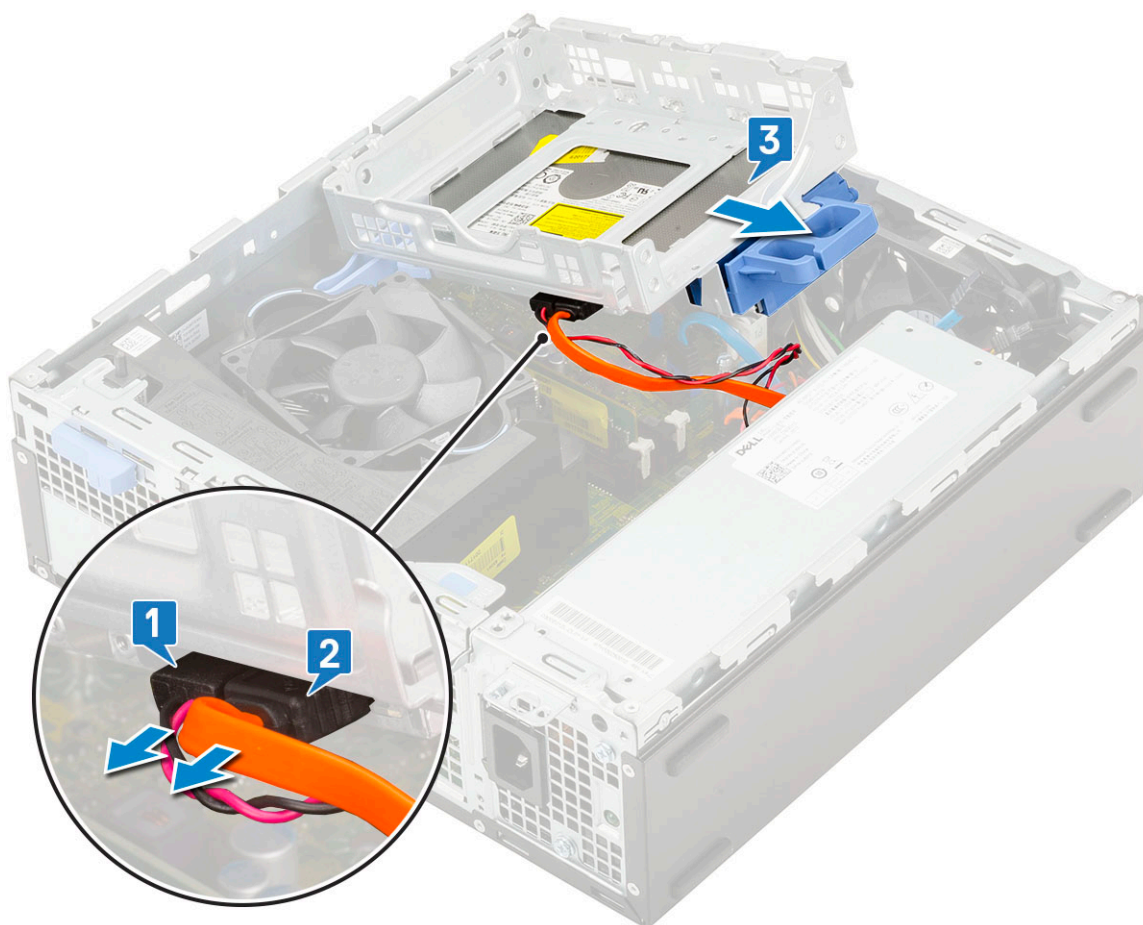




- b Slide the release tab to unlock the hard drive and optical module [1].
- c Lift the hard drive and optical module [2]

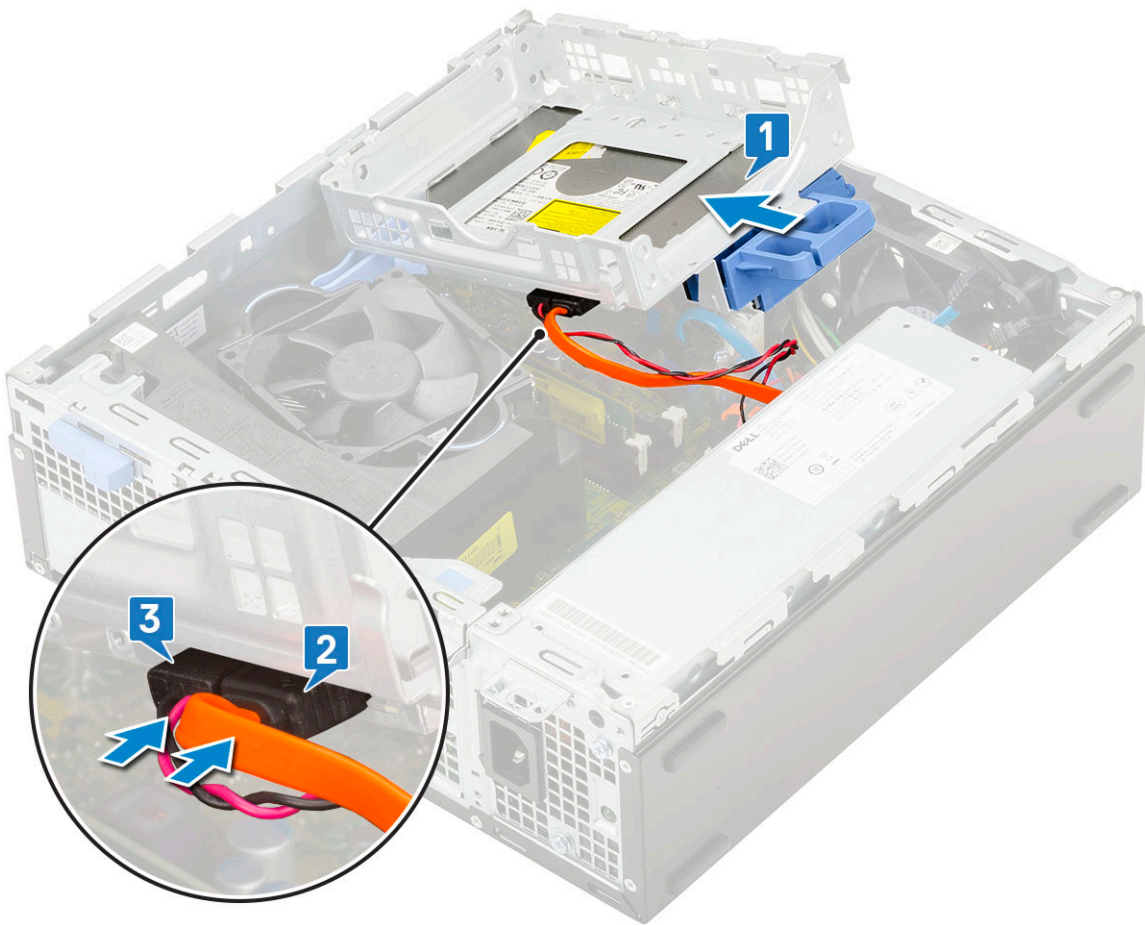


- 4 To remove the hard drive and optical drive module:
- a Disconnect the optical drive data cable and optical drive power cable from the connectors on the optical drive [1, 2].
  - b Slide and lift the hard drive and optical drive module from the system [3].



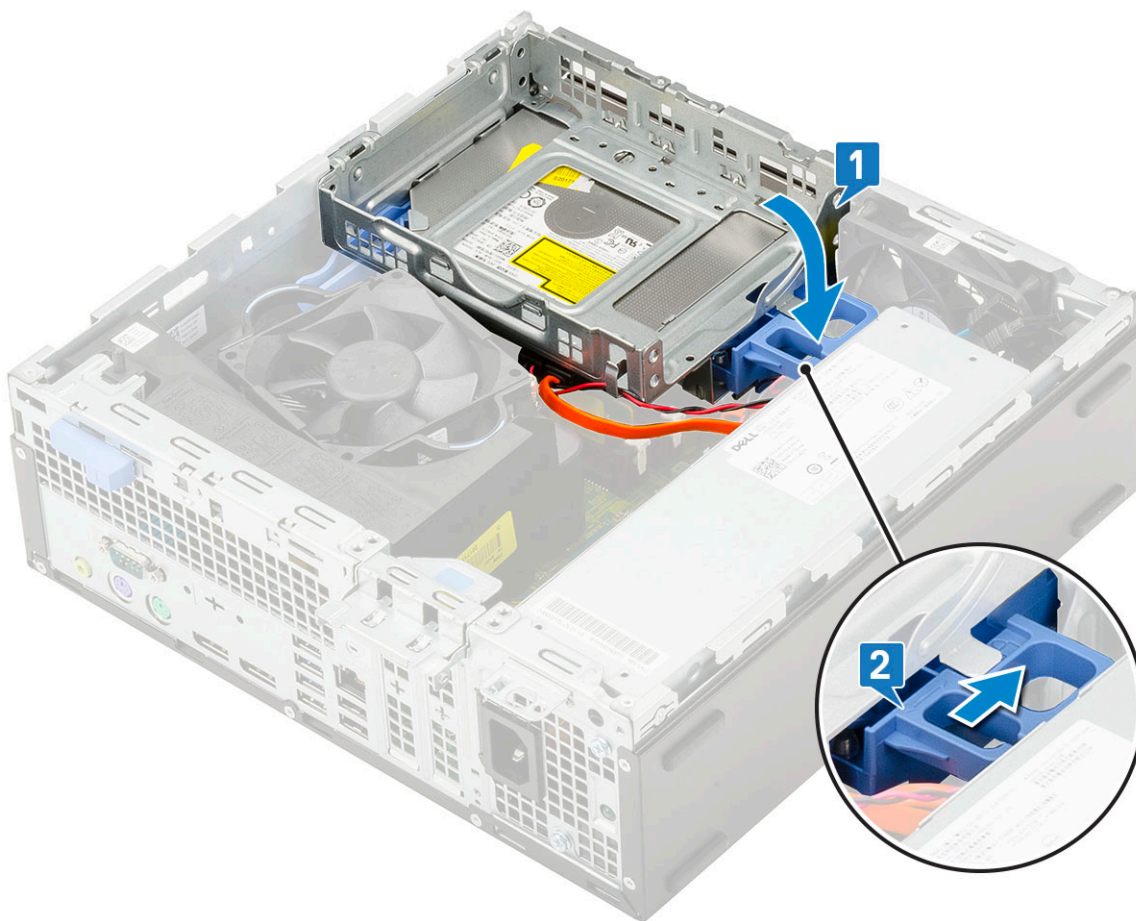
## Installing the hard drive and optical drive module

- 1 Insert the tabs on the hard drive and optical drive module into the slot on the system at 30 degree angle [1].
- 2 Connect the optical drive data cable and power cable to the connectors on the optical drive [2, 3].

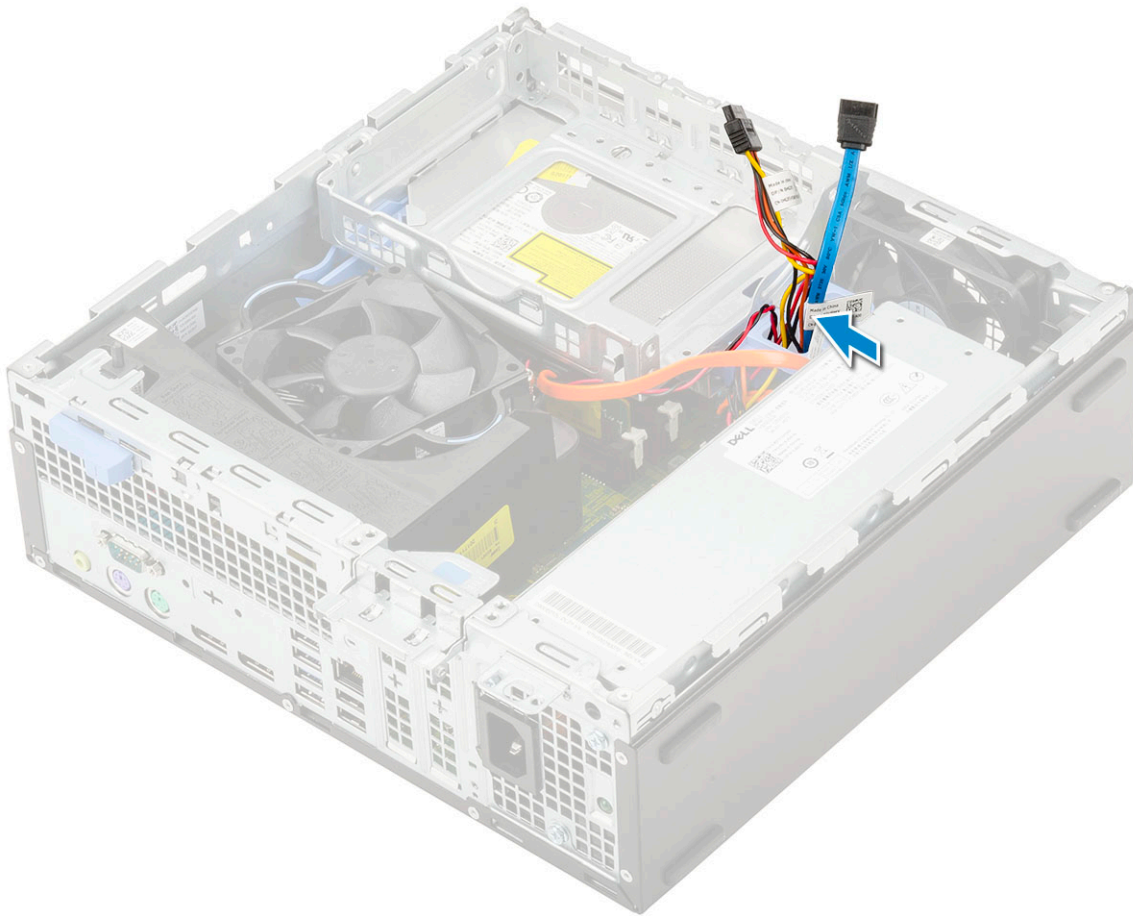


- 3 Lower the hard drive and optical drive module so that it is placed in its slot [1].
- 4 Slide the release tab to lock the module [2].





- 5 Route the hard drive data and power cables through the HDD-ODD release tab .
- 6 Route the optical drive data cable and power cable through the retention clips .

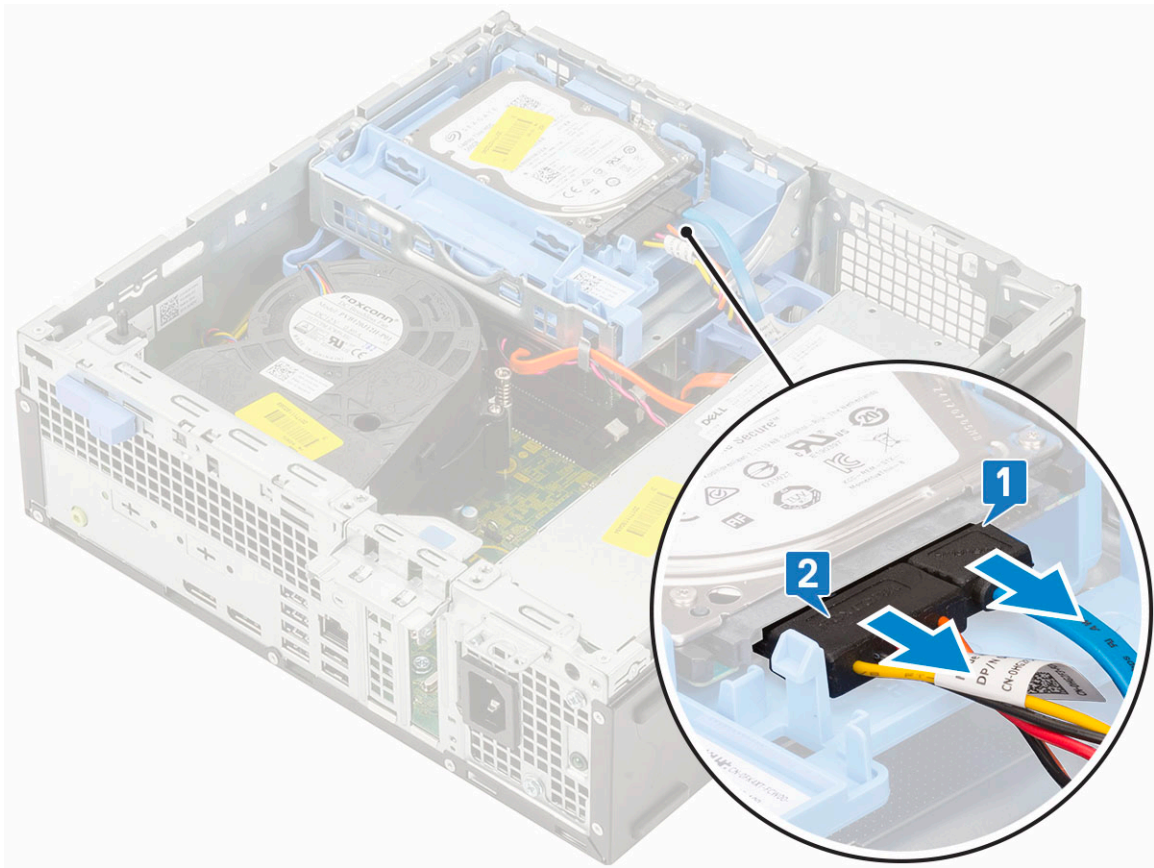


- 7 Install the:
  - a HDD assembly
  - b Front bezel
  - c Side cover
- 8 Follow the procedure in [After working inside your computer.](#)

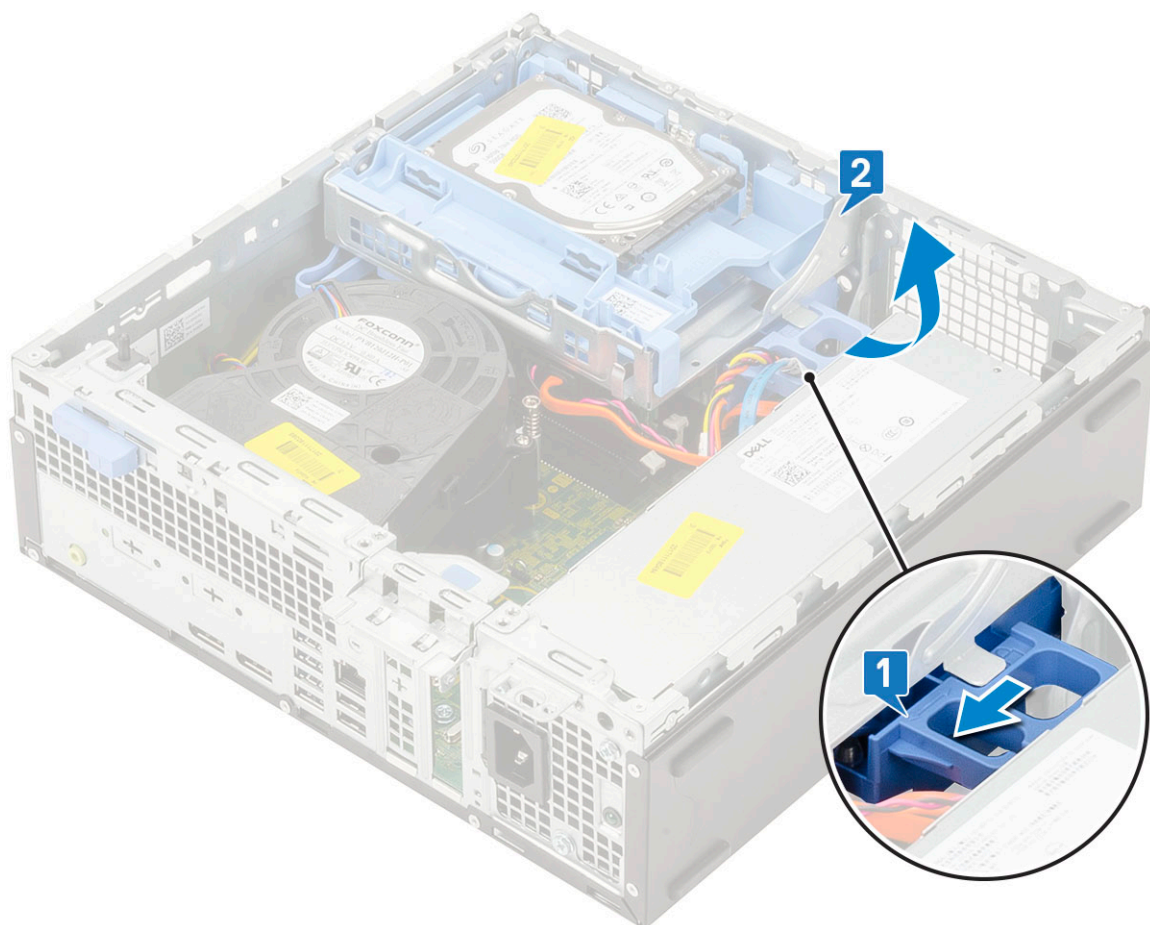
## Optical drive

## Removing the optical drive

- 1 Follow the procedure in [Before working inside your computer](#).
- 2 Remove the:
  - a [Side cover](#)
  - b [Front bezel](#)
- 3 To remove the optical drive:
  - a Disconnect the hard drive data cable and power cable from the connectors on the hard drive [1, 2].

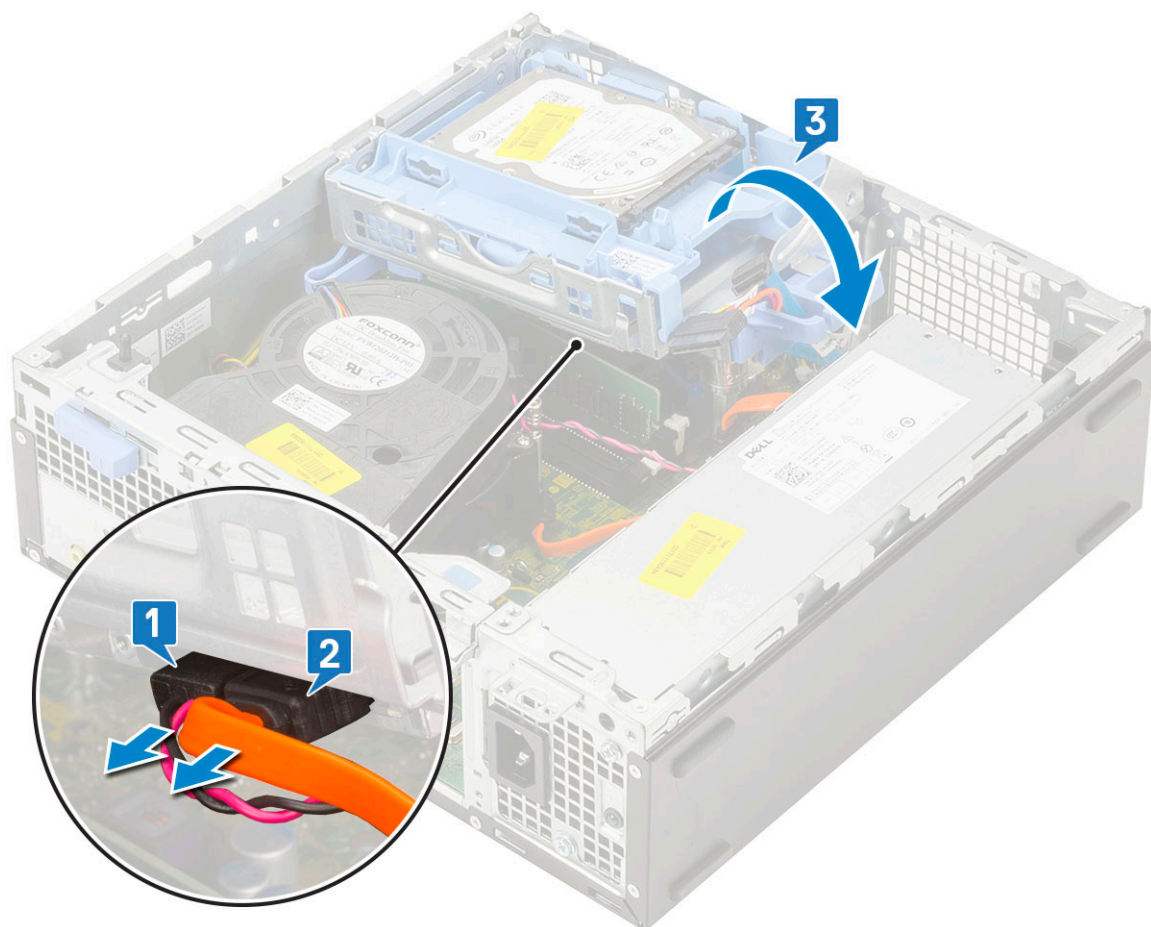


- b Slide the release tab to unlock the hard drive and optical module [1].
- c Lift the hard drive and optical module [2].

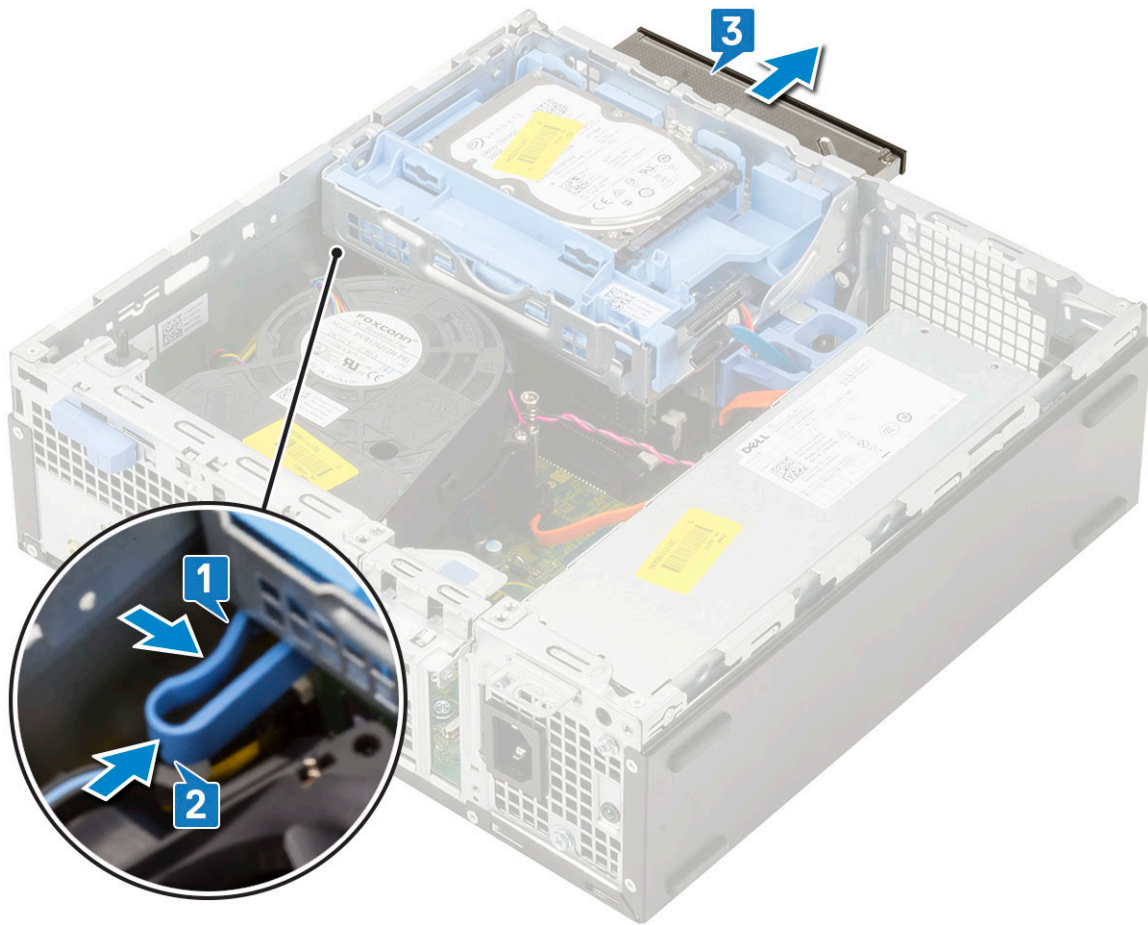


- d Disconnect the optical drive data cable and optical drive power cable from the connectors on the optical drive [1, 2] and lower the hard drive and optical module until it is seated.



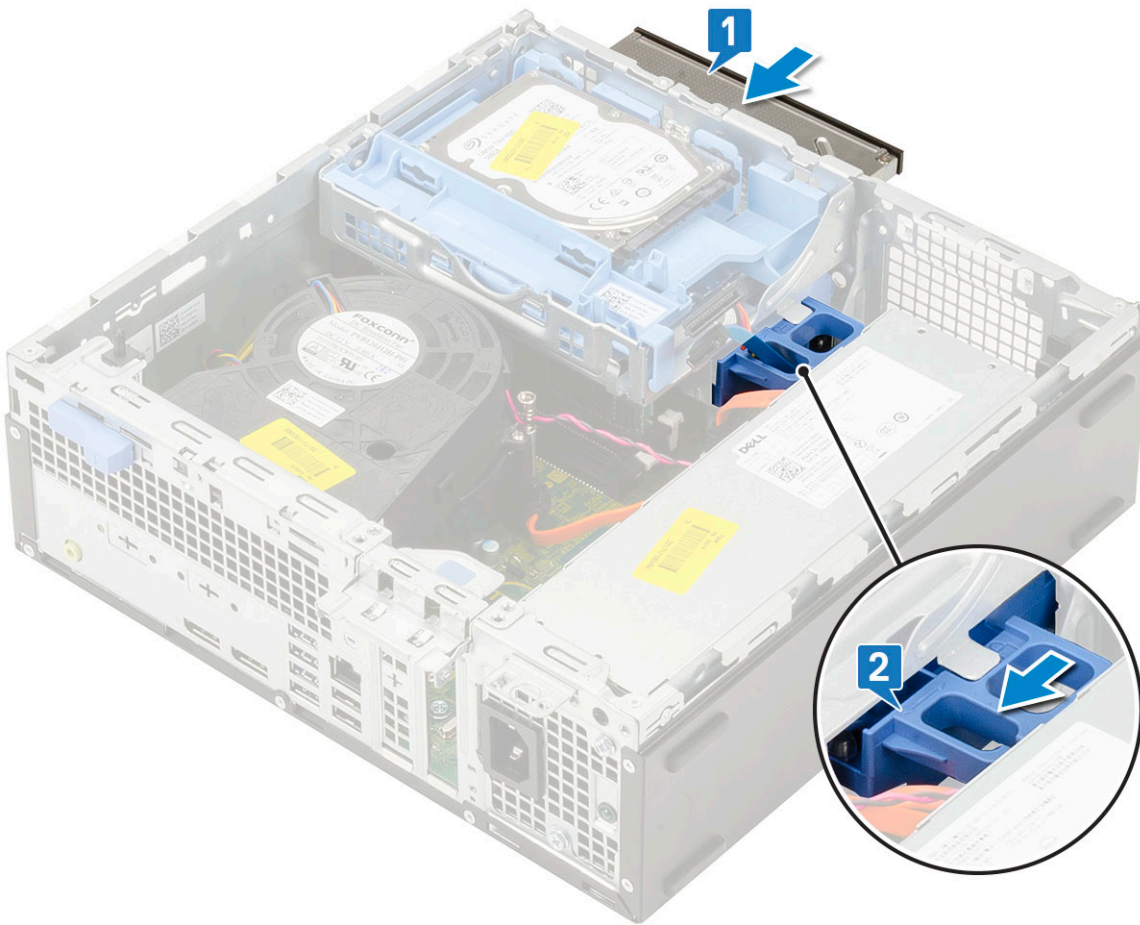


- e Push the release latch on the optical drive [1] and pull the optical drive out from the system [3].

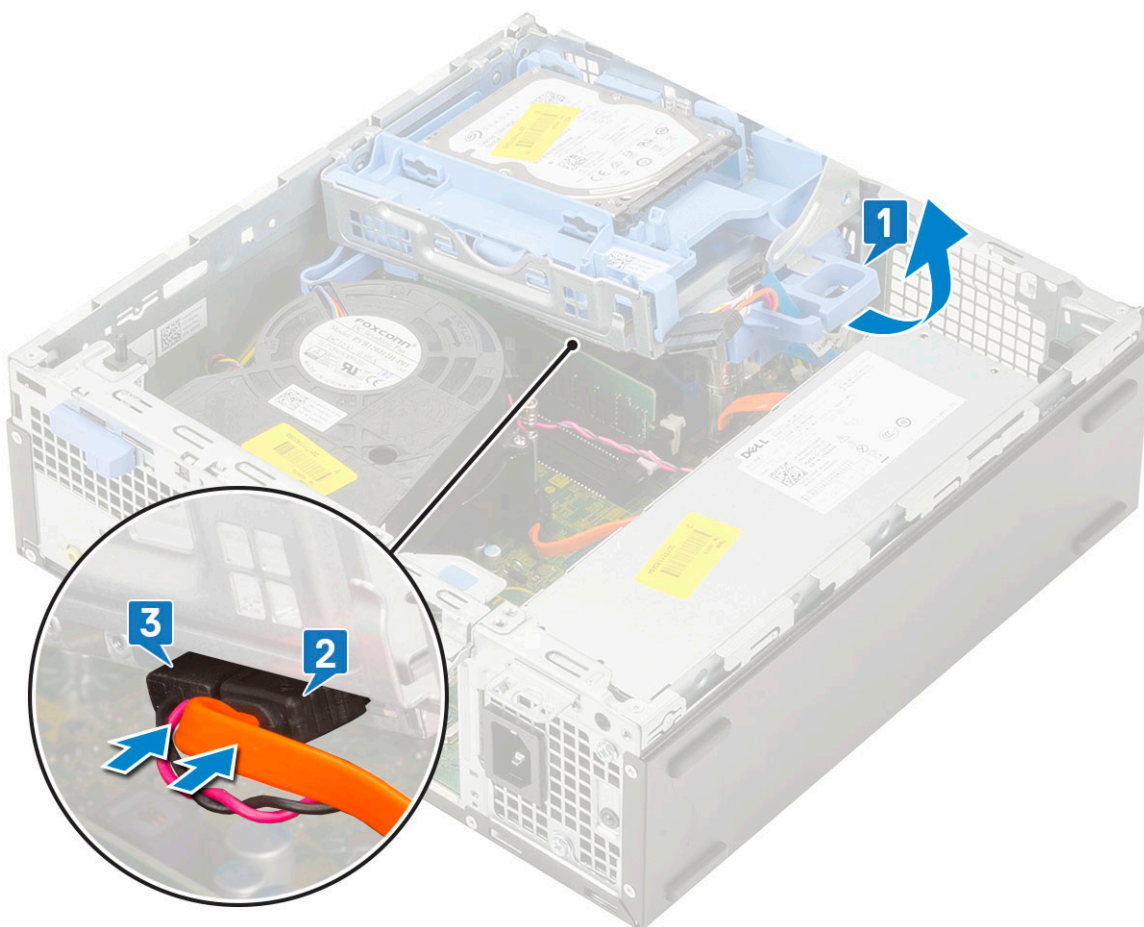


## Installing the optical drive

- 1 Slide the optical drive into its slot in the system [1].
- 2 Slide the release tab to unlock the hard drive and optical drive module [2].

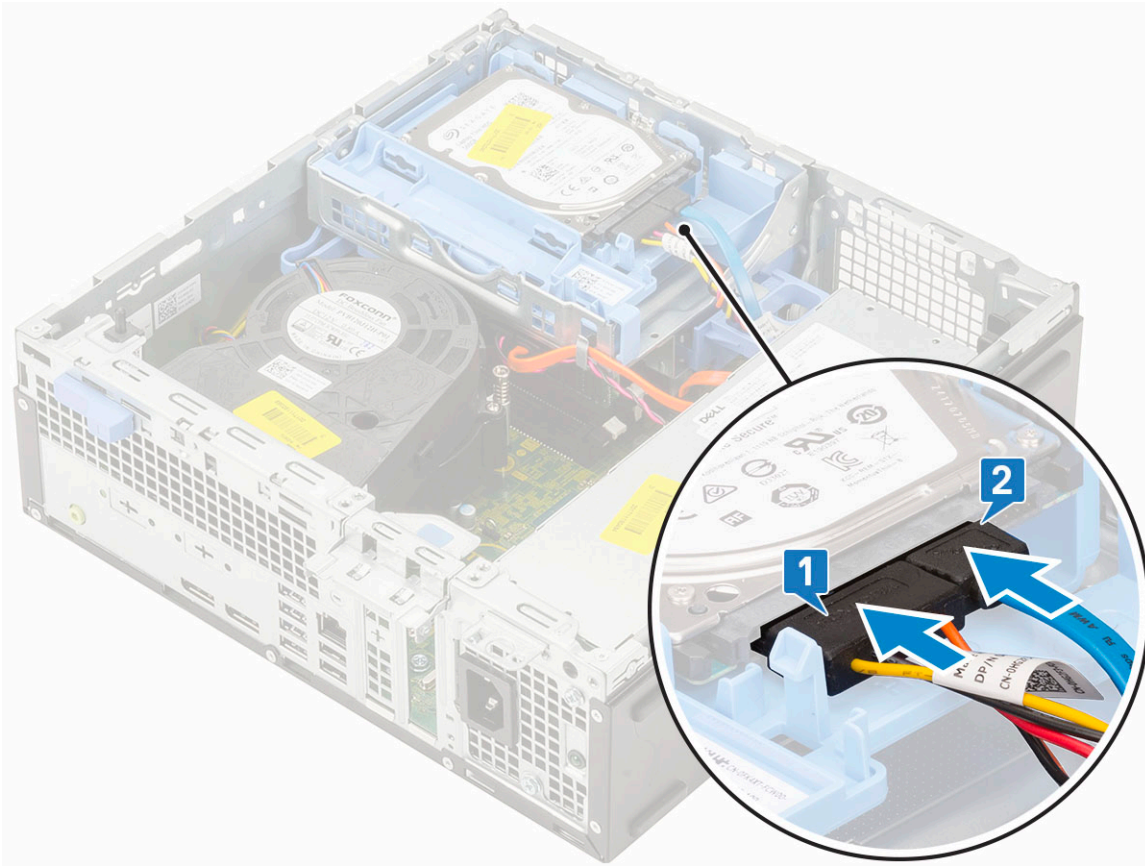


- 3 Lift the hard drive and optical module [1], connect the optical drive data cable and power cable to the connectors on the optical drive [2, 3].

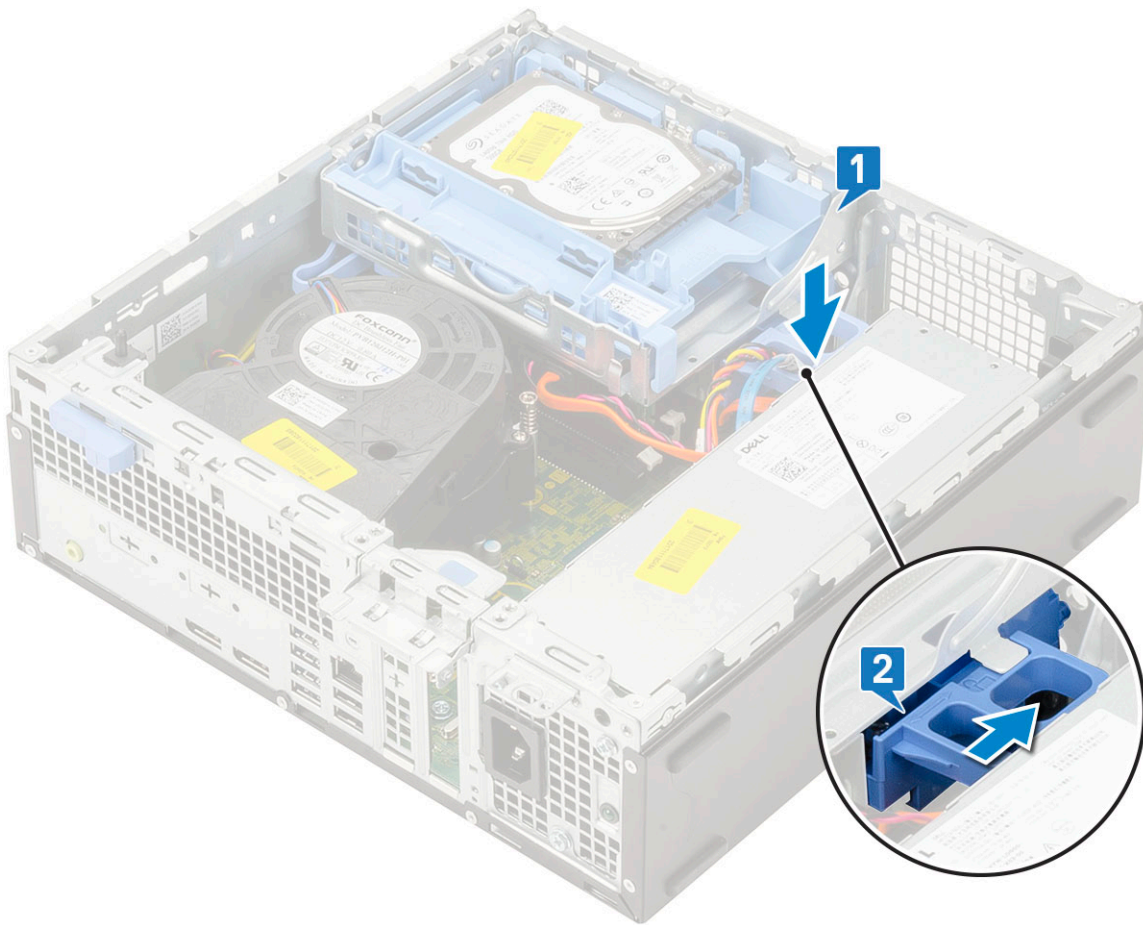


- 4 Connect the hard drive data cable and hard drive power cable to the connectors on the hard drive [1,2].





- 5 Slide the release tab to lock the module [2].

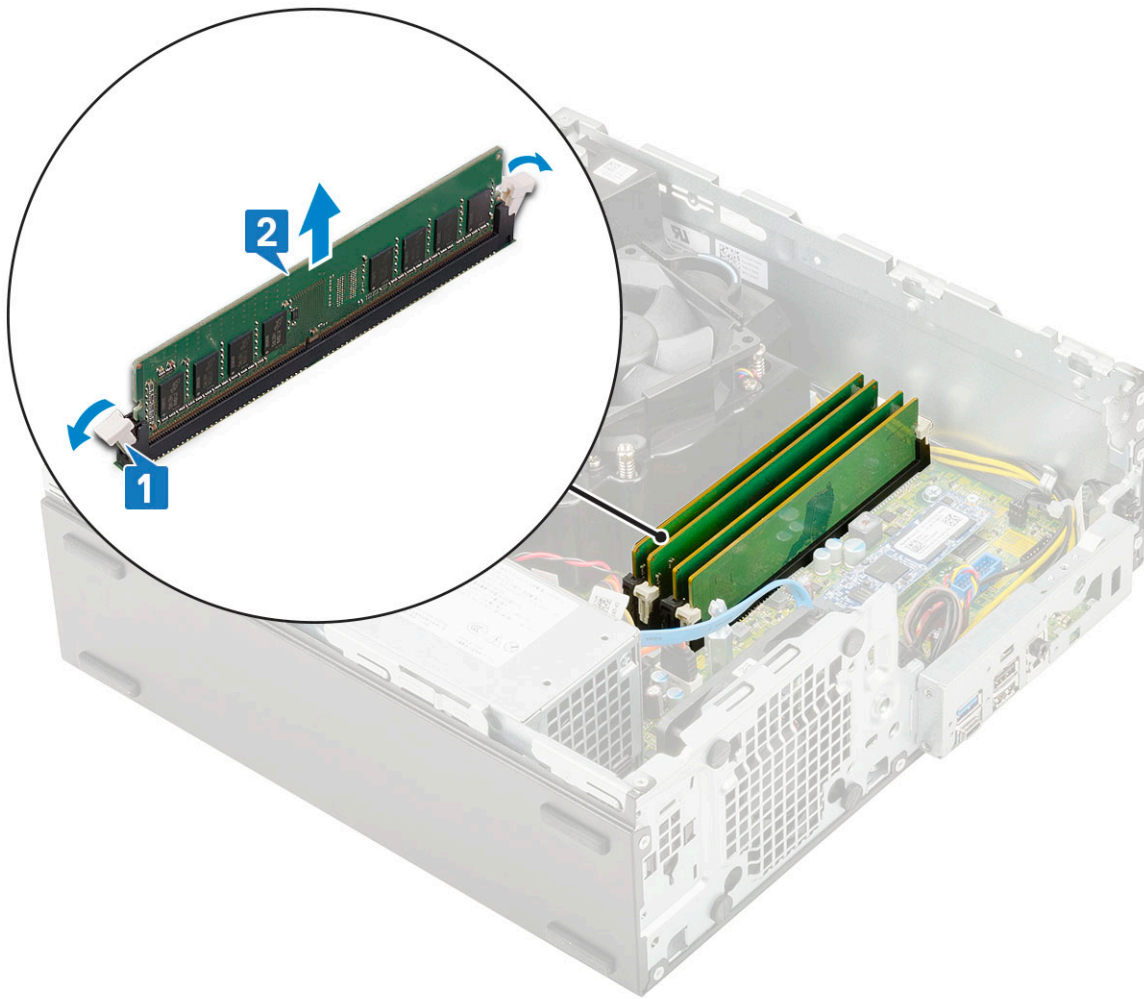


- 6 Install the:
  - a [Front bezel](#)
  - b [Side cover](#)
- 7 Follow the procedure in [After working inside your computer.](#)

## Memory module

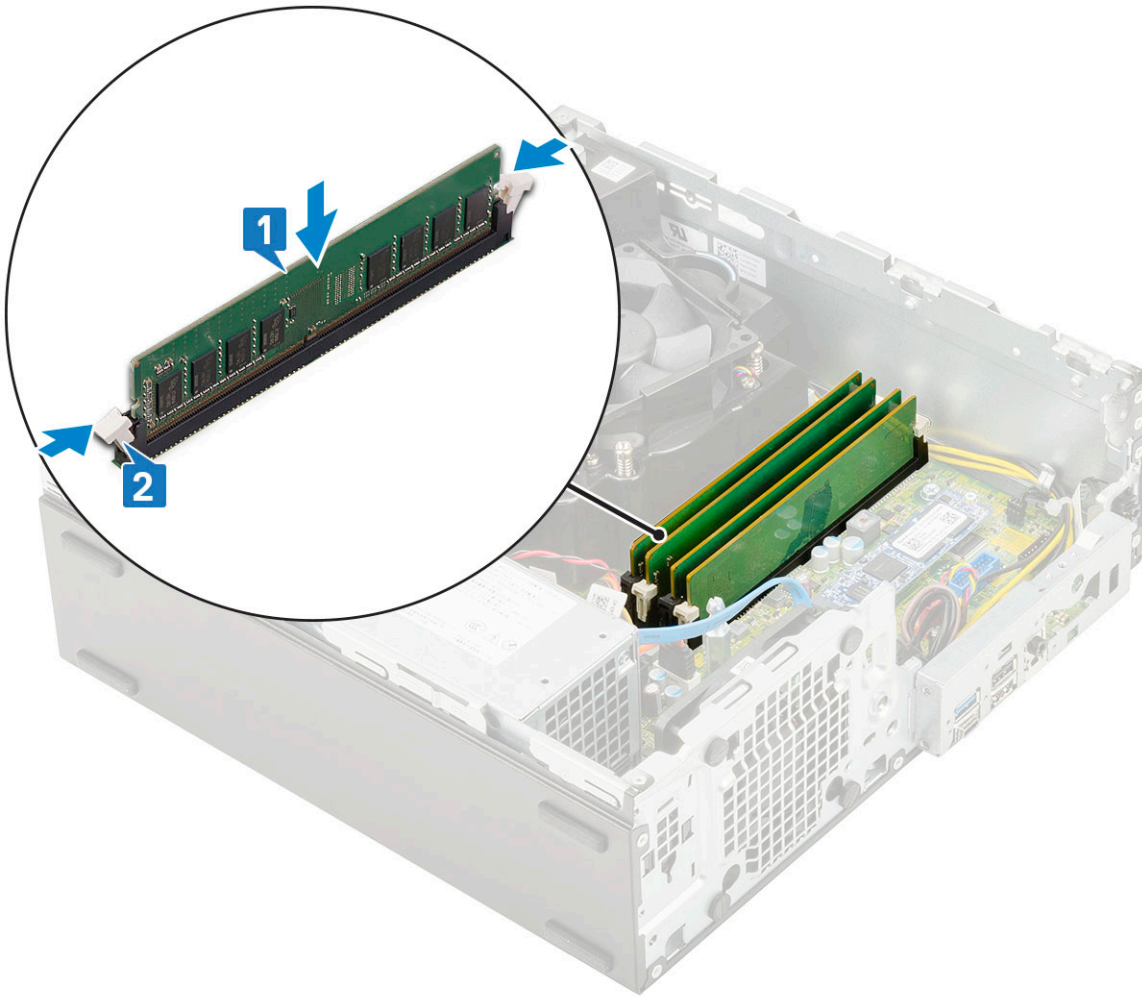
### Removing memory module

- 1 Follow the procedure in [Before working inside your computer.](#)
- 2 Remove the:
  - a [Side cover](#)
  - b [Front bezel](#)
  - c [HDD assembly](#)
  - d [Hard drive and optical drive module](#)
- 3 To remove the memory module:
  - a Pry open the retention tabs from both sides to lift the memory module from the connector [1].
  - b Remove the memory module from the system board [2].



## Installing the memory module

- 1 Align the notch on the memory module with the tab on the memory module connector.
- 2 Insert the memory module into the memory module socket [1].
- 3 Press the memory module until the memory module retention tabs click into place [2].



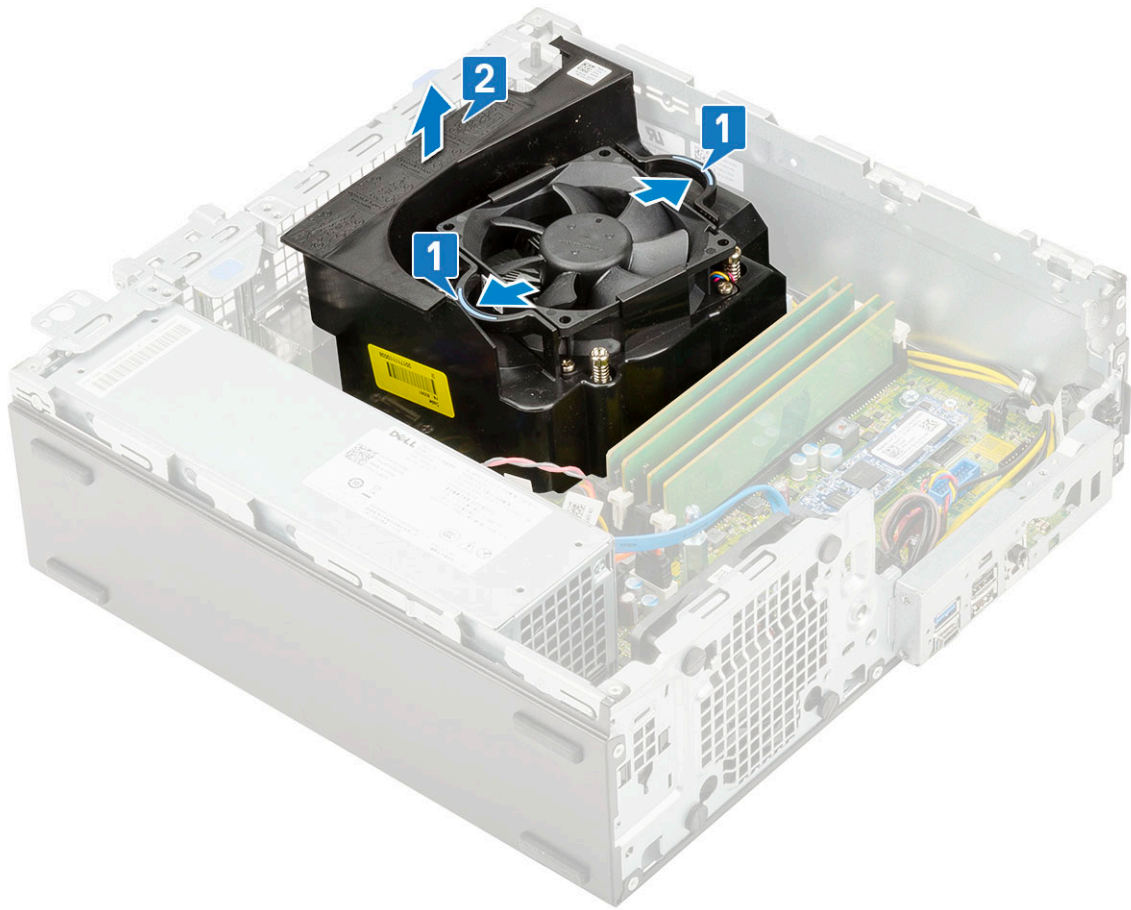
- 4 Install the:
  - a [Hard drive and optical drive module](#)
  - b [HDD assembly](#)
  - c [Front bezel](#)
  - d [Side cover](#)
- 5 Follow the procedure in [After working inside your computer](#).

## Heat sink duct

### Removing heat sink duct

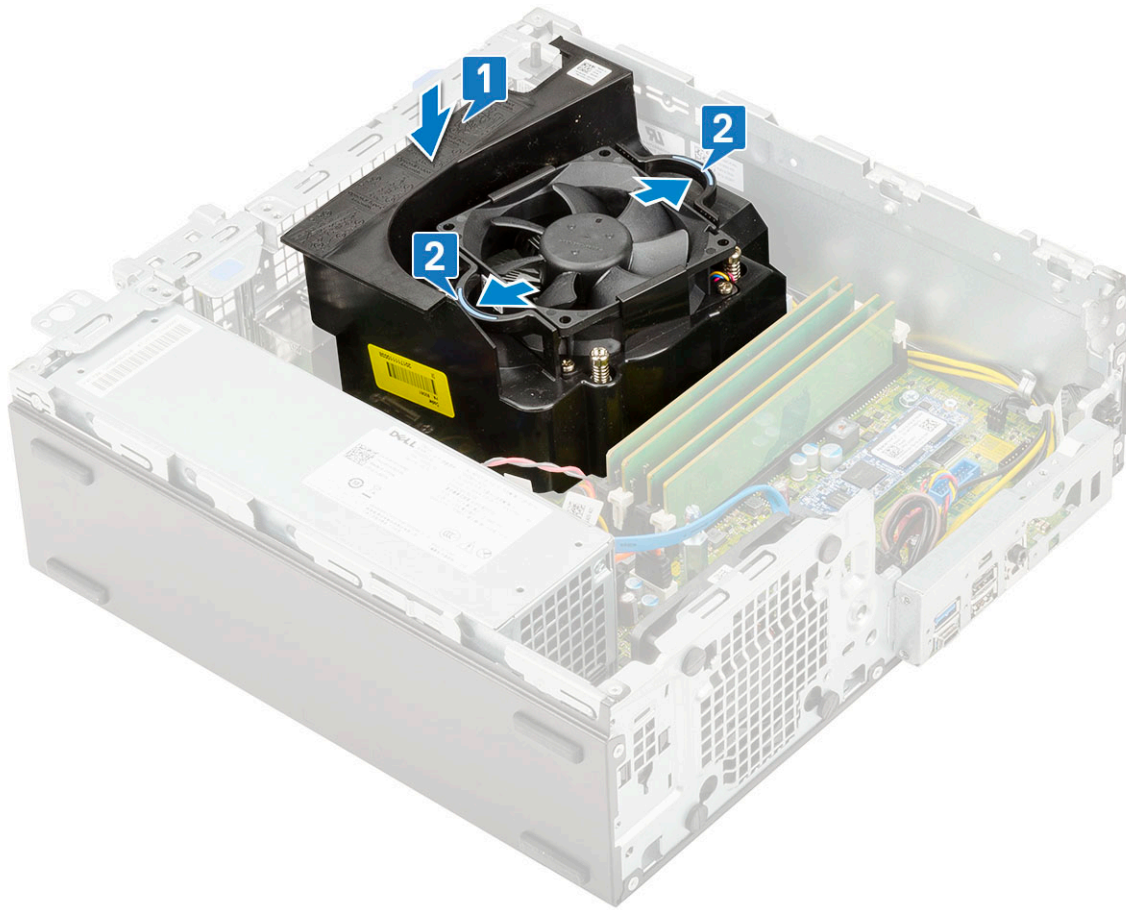
- 1 Follow the procedure in [Before working inside your computer](#).
- 2 Remove the:
  - a [Side cover](#)
  - b [Front bezel](#)
  - c [HDD assembly](#)
  - d [Hard drive and optical drive module](#)
- 3 To remove the heat sink bracket:
  - a Pull both the release tabs simultaneously, to remove the plastic duct that secures the heat sink assembly [1].
  - b Lift the plastic duct away from the heat sink assembly [2].





## Installing heat sink duct

- 1 To install the heat sink duct:
  - a Align the plastic duct over the heat sink assembly [1].
  - b Pull the release tabs and push the plastic bracket until it clicks in place [2].



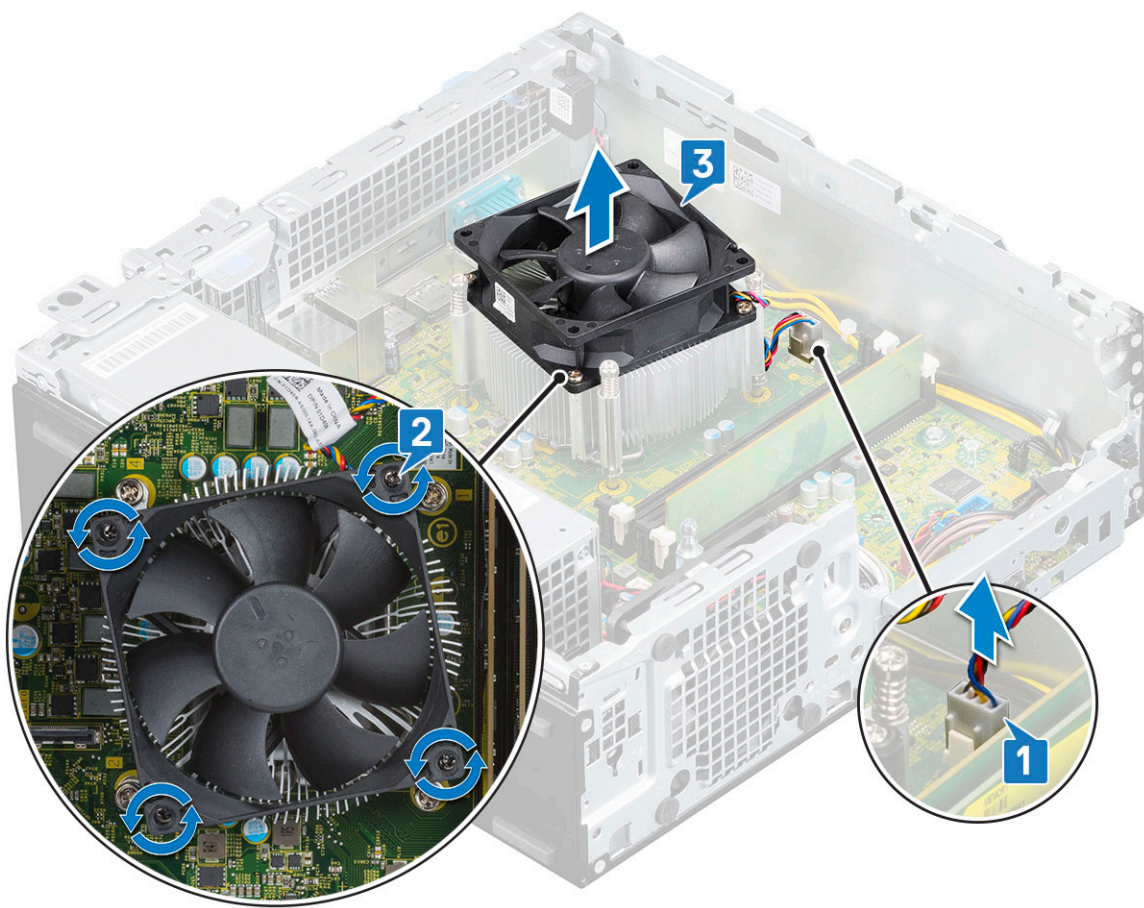
- 2 Install the:
  - a [Hard drive and optical drive module](#)
  - b [HDD assembly](#)
  - c [Front bezel](#)
  - d [Side cover](#)
- 3 Follow the procedure in [After working inside your computer](#).

## Heat sink fan

### Removing heat sink fan

- 1 Follow the procedure in [Before working inside your computer](#).
- 2 Remove the:
  - a [Side cover](#)
  - b [Front bezel](#)
  - c [HDD assembly](#)
  - d [Hard drive and optical drive module](#)
  - e [Heat sink duct](#)
- 3 To remove the heat sink fan:
  - a Disconnect the heat sink fan cable from the system board [1].
  - b Loosen the screws (4) that secure the heat sink fan to the heat sink [2].
  - c Lift the heat sink away from the system [3].

**NOTE:** Loosen the screws in a sequential order (1,2,3,4) as mentioned on the system board.



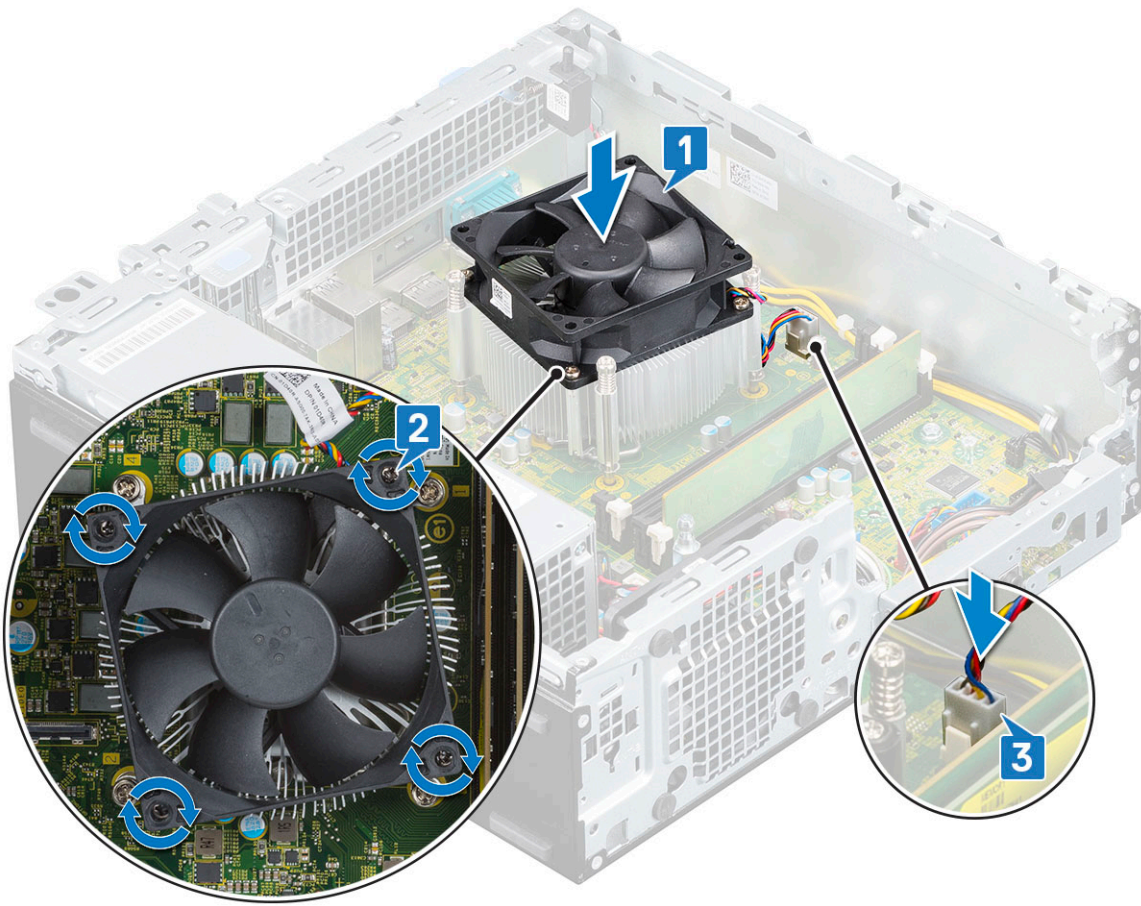
## Installing heat sink fan

- 1 Place the heat sink fan on the heat sink [1].
- 2 Tighten the screws (4) to secure the heat sink fan over the heat sink [2].

**NOTE:** Tighten the screws in a sequential order (1,2,3,4) as mentioned on the system board.

- 3 Connect the heat sink fan cable to the connector on the system board [3].



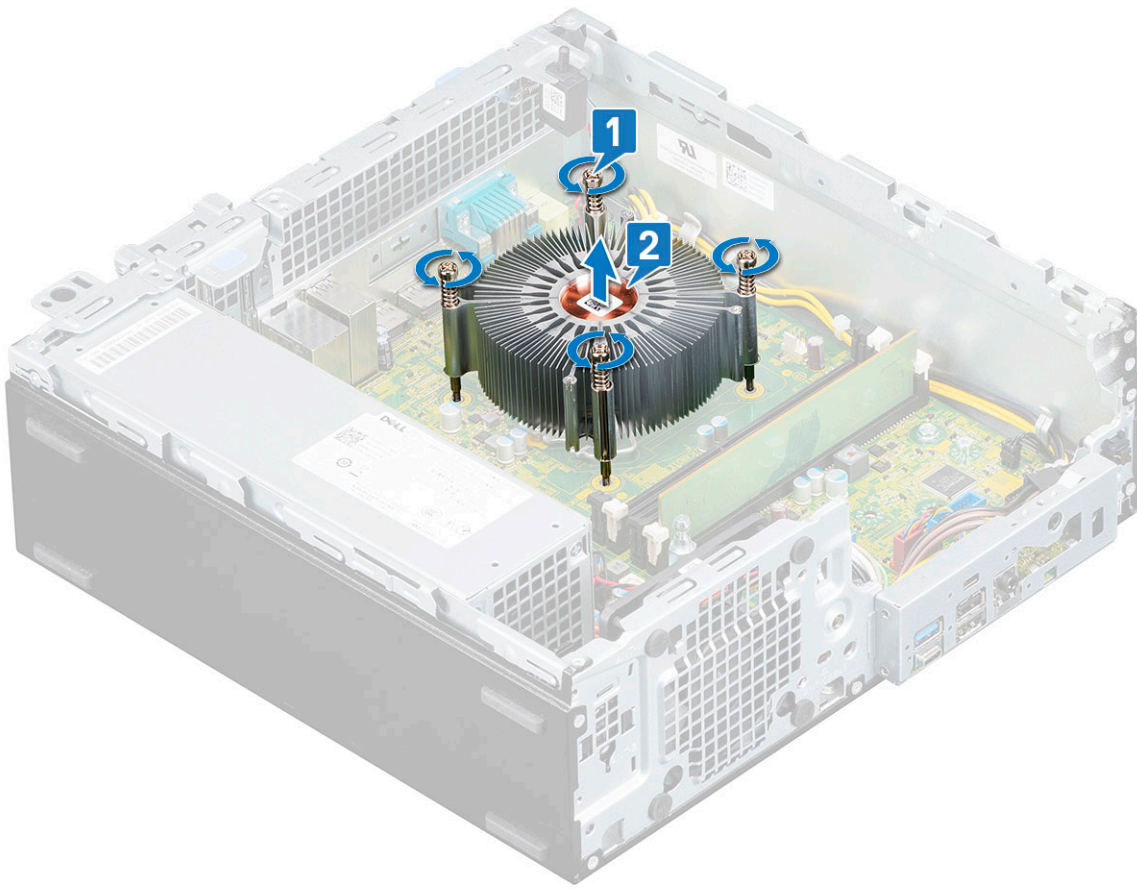


- 4 Install the:
  - a Heat sink duct
  - b Hard drive and optical drive module
  - c HDD assembly
  - d Front bezel
  - e Side cover
- 5 Follow the procedure in [After working inside your computer](#).

## Heat sink

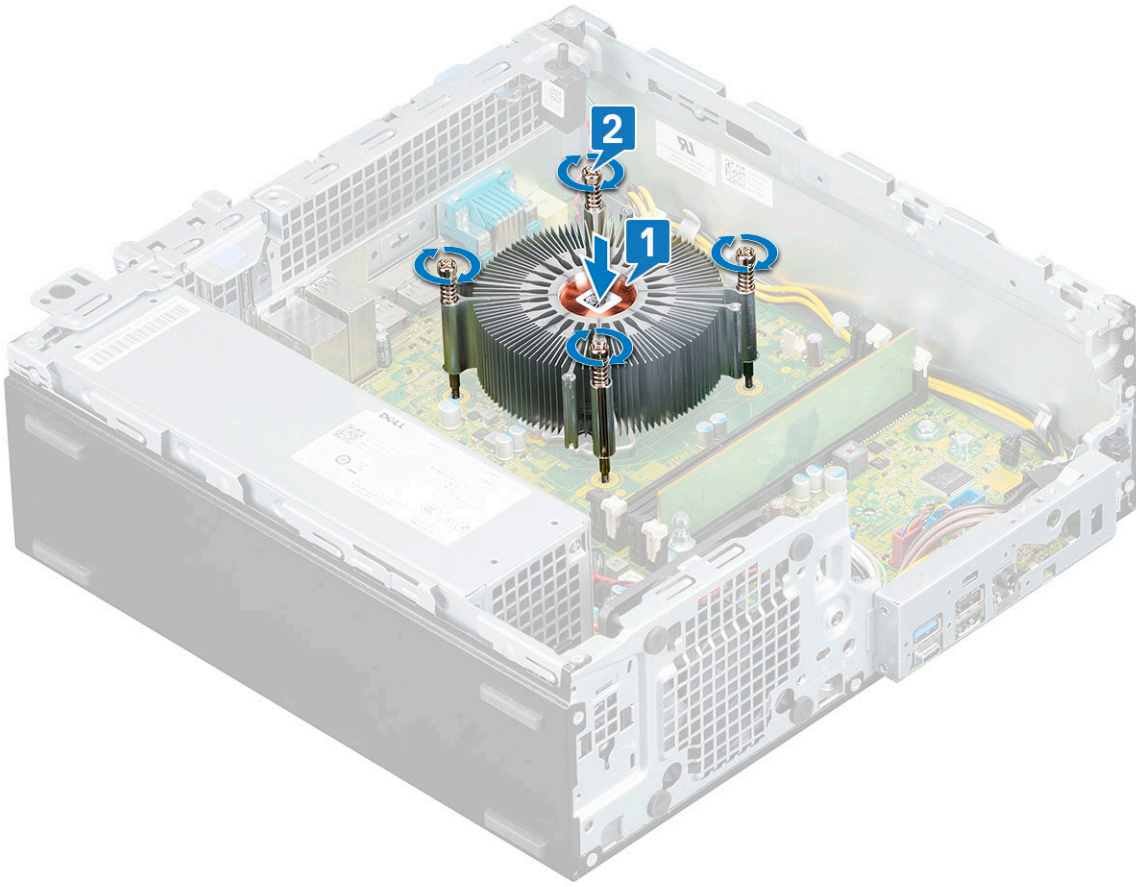
### Removing heat sink

- 1 Follow the procedure in [Before working inside your computer](#).
- 2 Remove the:
  - a Side cover
  - b Front bezel
  - c HDD assembly
  - d Hard drive and optical drive module
  - e Heat sink duct
  - f Heat sink fan
- 3 To remove the heat sink:
  - a Loosen the captive screws (4) that secure the heat sink to the system board [1].  
**NOTE:** Remove the screw in the sequential order (1,2,3,4) as printed on the system board.
  - b Lift the heat sink away from the computer [2].



## Installing heat sink

- 1 Place the heat sink on the processor and align the screws of the heat sink with the holders on the system board [1].
- 2 Tighten the captive screws to secure the heat sink to the system board [2].  
Replace the screw in the sequential order (1,2,3,4) as printed on the system board.



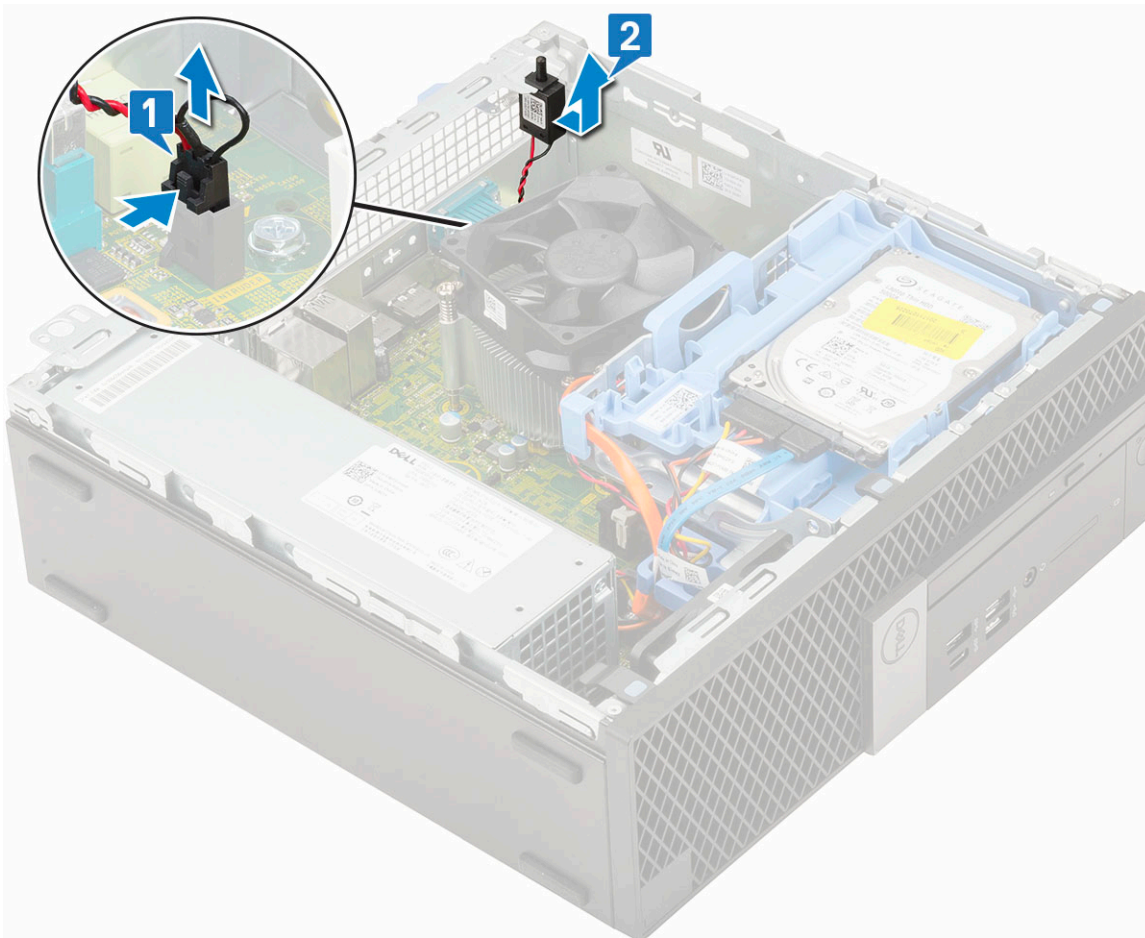
- 3 Replace the [Heat sink fan](#).
- 4 Install the:
  - a [Heat sink duct](#)
  - b [Hard drive and optical drive module](#)
  - c [HDD assembly](#)
  - d [Front bezel](#)
  - e [Side cover](#)
- 5 Follow the procedure in [After working inside your computer](#).

## Intrusion switch

### Removing intrusion switch

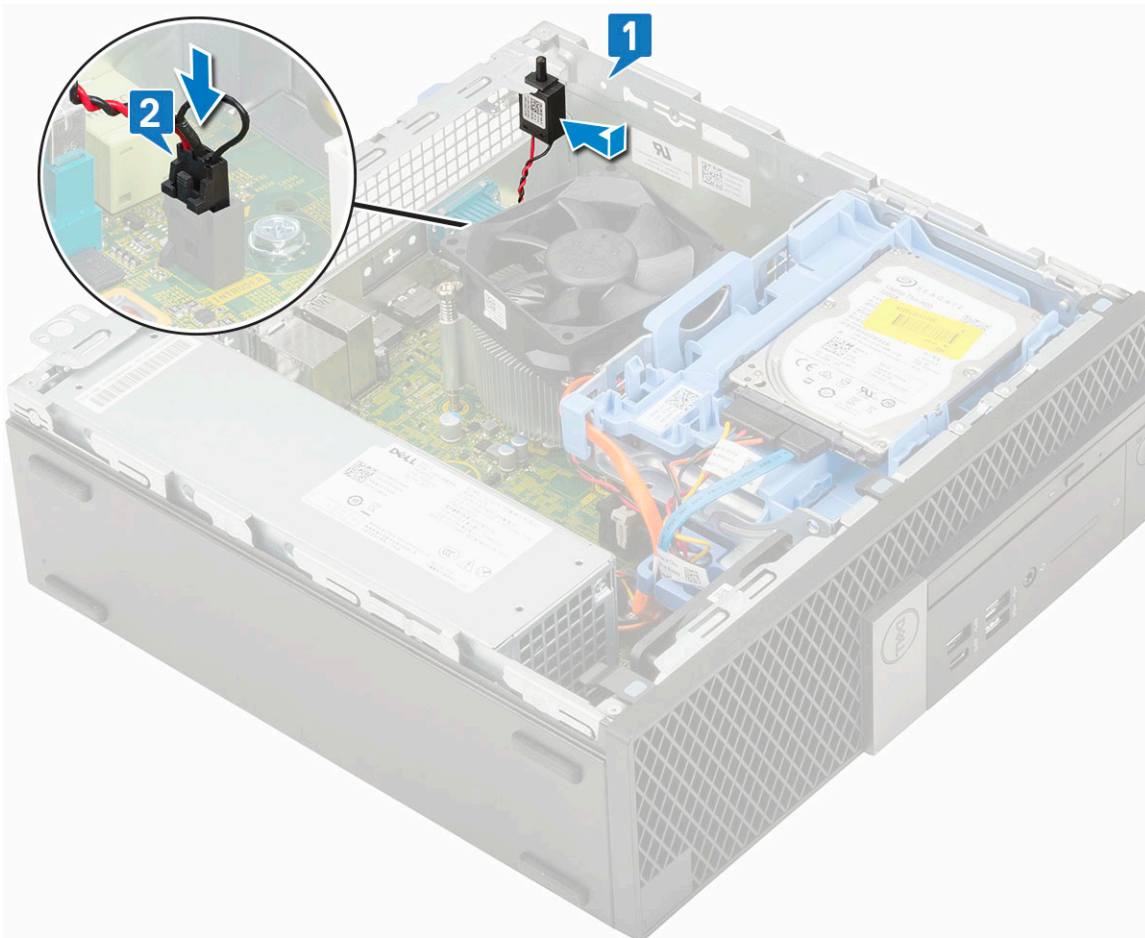
- 1 Follow the procedure in [Before working inside your computer](#).
- 2 Remove the:
  - a [Side cover](#)
  - b [Front bezel](#)
  - c [HDD assembly](#)
  - d [Hard drive and optical drive module](#)
  - e [Heat sink duct](#)
  - f [Heat sink fan](#)
- 3 To remove the intrusion switch:
  - a Disconnect the intrusion switch cable from the connector on the system board [1].
  - b Slide the intrusion switch and lift it away from the system chassis [2].





## Installing the intrusion switch

- 1 Insert the intrusion switch into the slot on the chassis [1].
- 2 Connect the intrusion switch cable to the system board [2].



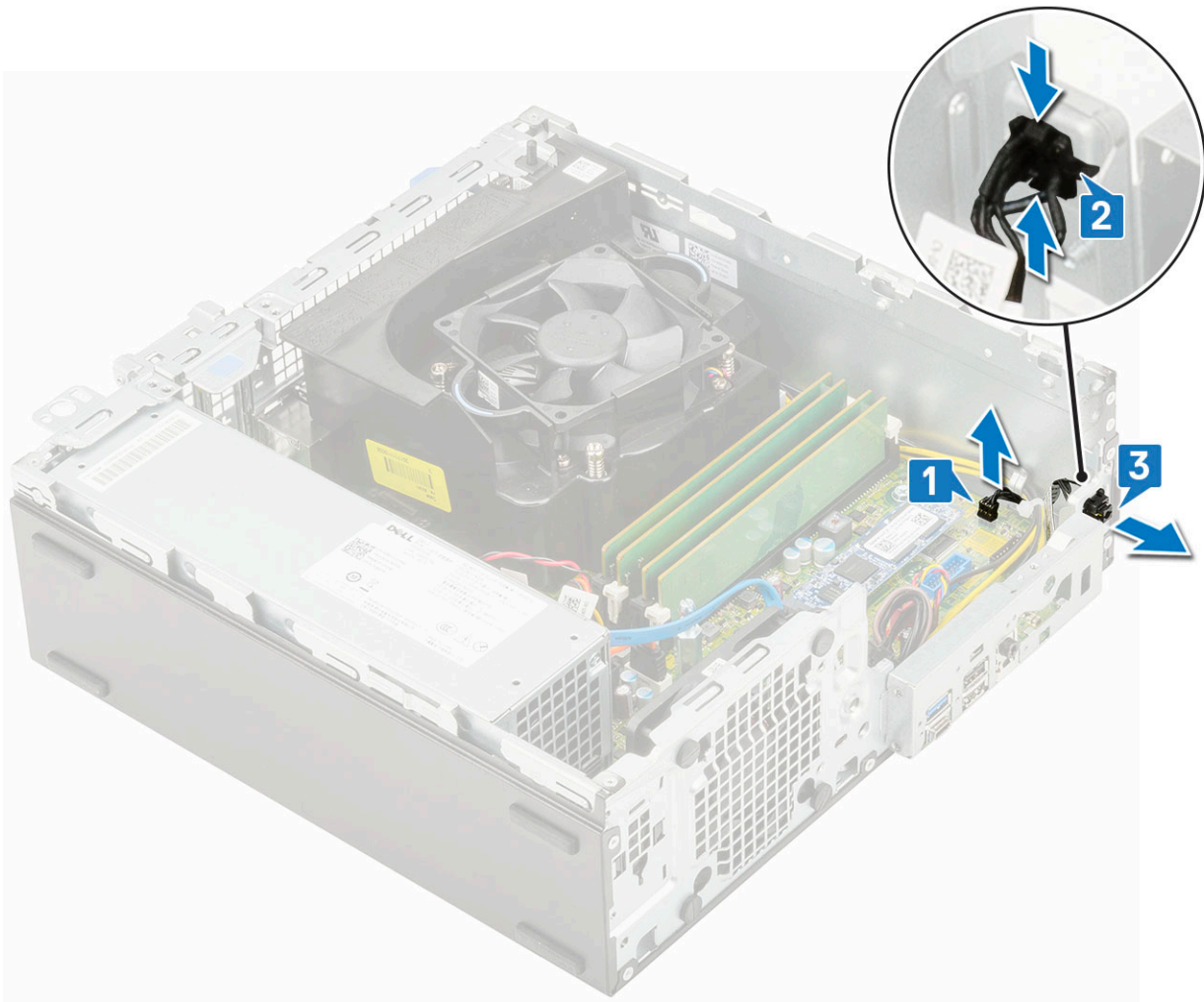
- 3 Install the:
  - a [Heat sink fan](#)
  - b [Heat sink duct](#)
  - c [Hard drive and optical drive module](#)
  - d [HDD assembly](#)
  - e [Front bezel](#)
  - f [Side cover](#)
- 4 Follow the procedure in [After working inside your computer](#).

## Power switch

### Removing power switch

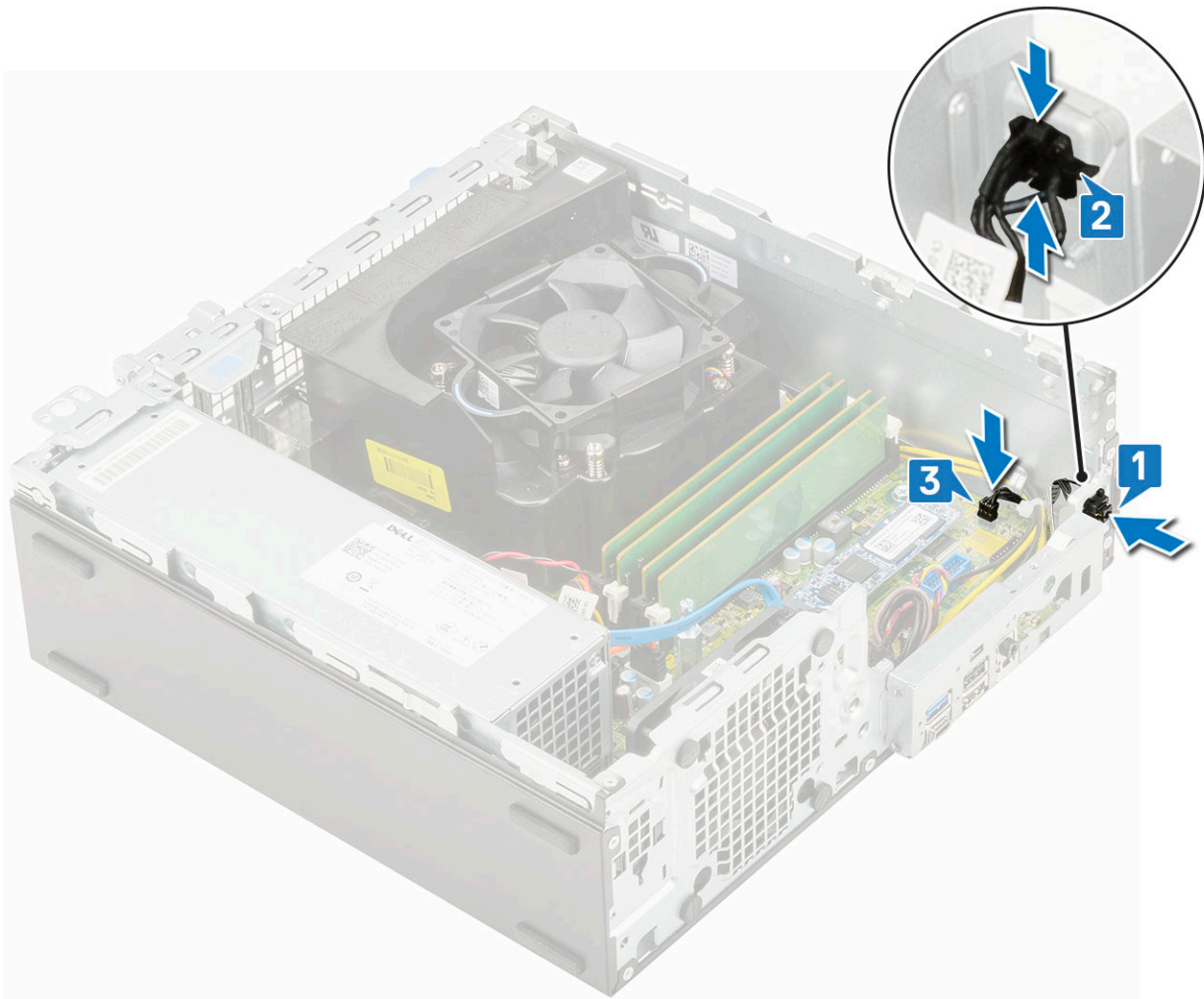
- 1 Follow the procedure in [Before working inside your computer](#).
- 2 Remove the:
  - a [Side cover](#)
  - b [Front bezel](#)
  - c [HDD assembly](#)
  - d [Hard drive and optical drive module](#)
- 3 To remove the power switch:
  - a Disconnect the power switch cable from the system board [1].
  - b Press the power switch retention tabs and pull the power switch out from the system [2] [3].





## Installing the power switch

- 1 Align and slide the power switch module into the slot on the chassis until it clicks into place [1, 2].
- 2 Connect the power switch cable to the connector on the system board [3].



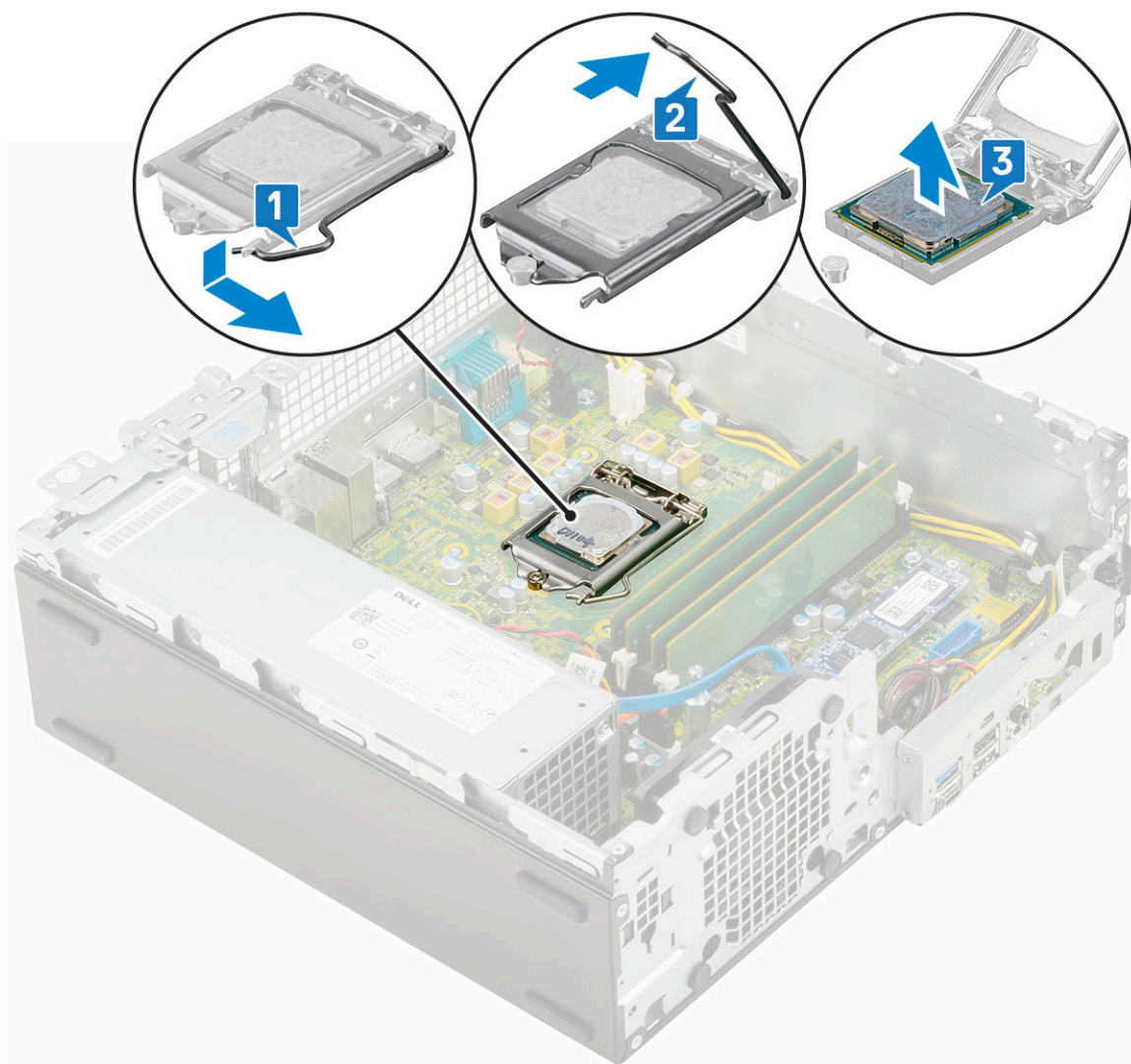
- 3 Install the:
  - a [Hard drive and optical drive module](#)
  - b [HDD assembly](#)
  - c [Front bezel](#)
  - d [Side cover](#)
- 4 Follow the procedure in [After working inside your computer](#).

## Processor

### Removing processor

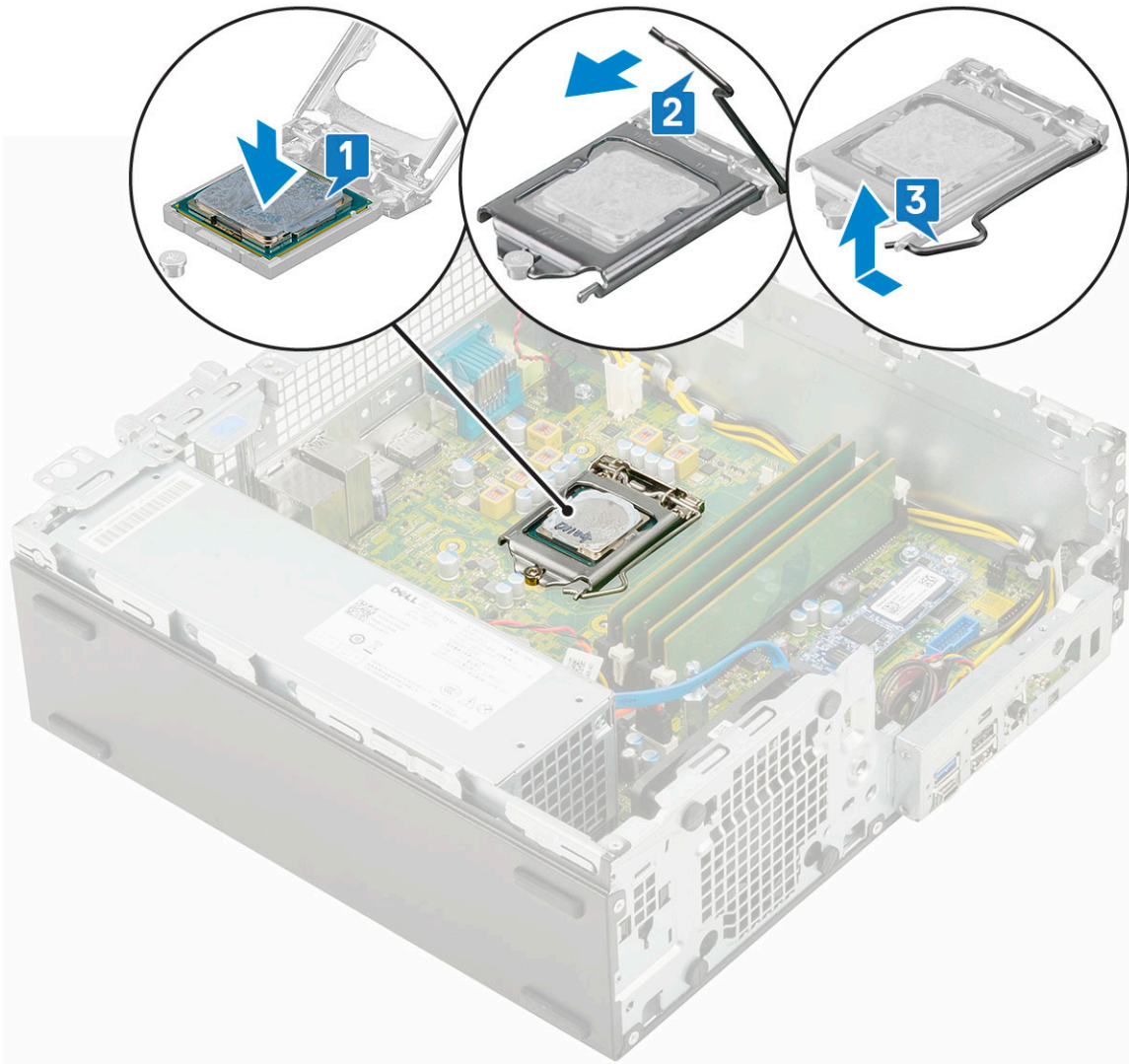
- 1 Follow the procedure in [Before working inside your computer](#).
- 2 Remove the:
  - a [Side cover](#)
  - b [Front bezel](#)
  - c [HDD assembly](#)
  - d [Hard drive and optical drive module](#)
  - e [Heat sink duct](#)
  - f [Heat sink fan](#)
- 3 To remove the processor:
  - a Release the socket lever by pushing the lever down and out from under the tab on the processor shield [1].

- b Lift the lever upward and lift the processor shield [2].
- c Lift the processor out of the socket [3].



## Installing the processor

- 1 Place the processor on the socket such that the slots on the processor align with the socket keys [1].
- 2 Close the processor shield by sliding it under the retention screw [2].
- 3 Lower the socket lever and push it under the tab to lock it [3].



- 4 Install the:
  - a Heat sink fan
  - b Heat sink duct
  - c Hard drive and optical drive module
  - d HDD assembly
  - e Front bezel
  - f Side cover
- 5 Follow the procedure in [After working inside your computer.](#)

## M.2 PCIe SSD

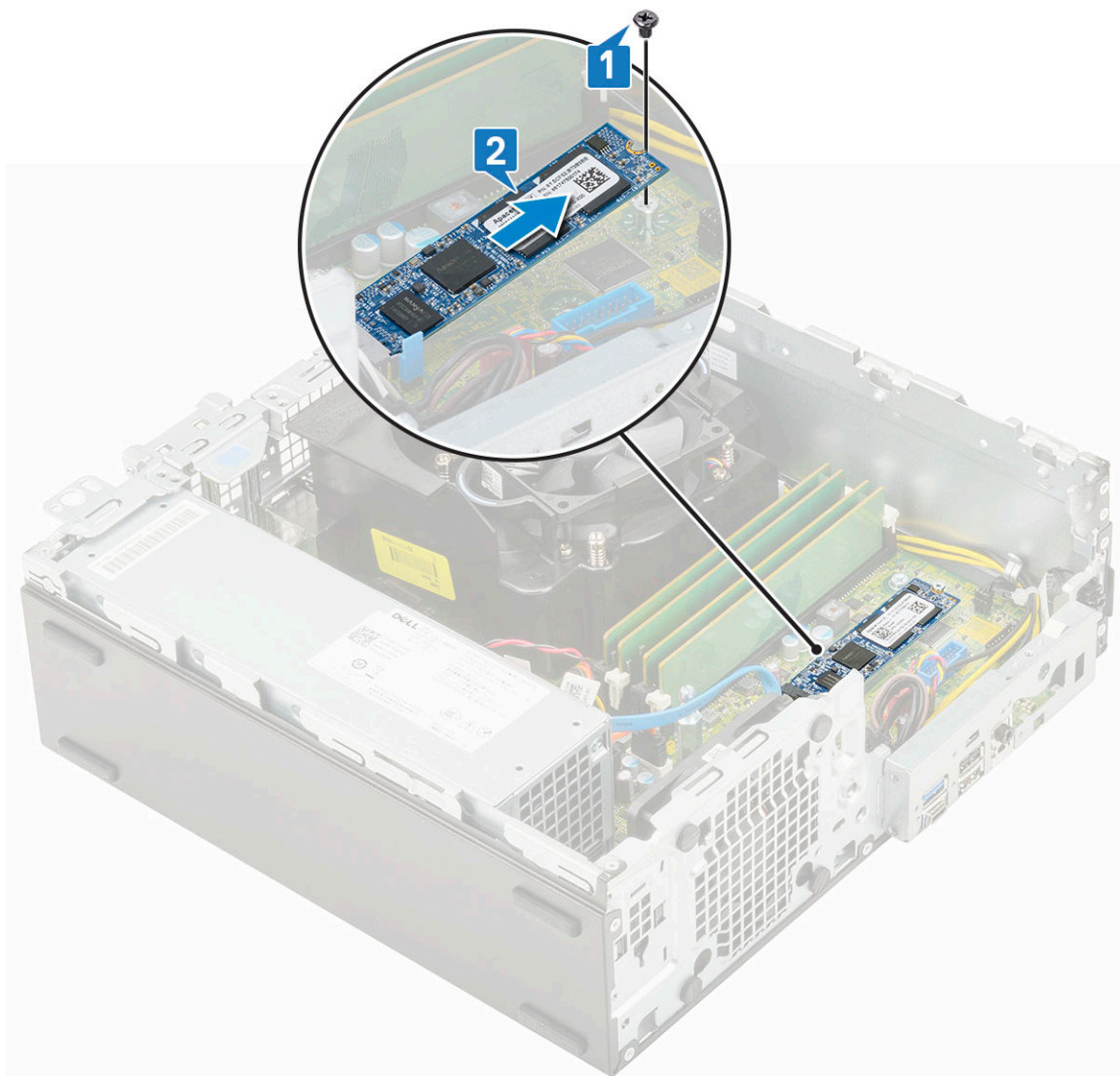
### Removing the M.2 PCIe SSD

**NOTE:** The instructions are applicable to M.2 SATA SSD also.

- 1 Follow the procedure in [Before working inside your computer.](#)
- 2 Remove the:
  - a Side cover
  - b Front bezel



- c HDD assembly
  - d Hard drive and optical drive module
- 3 To remove the M.2 PCIe SSD:
- a Remove the single (M2x3.5) screw that secures the M.2 PCIe SSD to the system board [1].
  - b Lift and pull out the PCIe SSD from its connector on the system board [2].

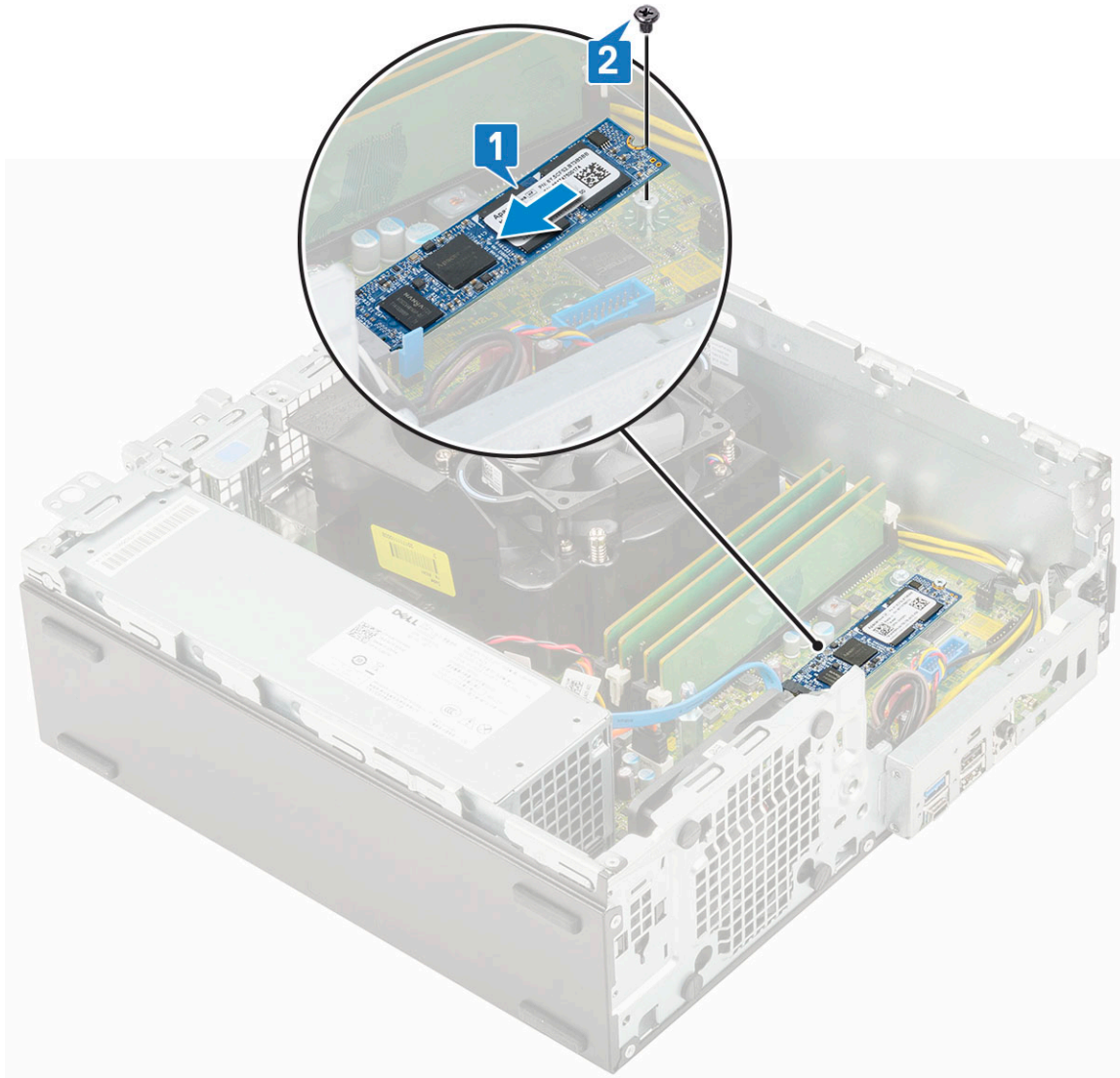


## Installing the M.2 PCIe SSD

① **NOTE:** The instructions are applicable to M.2 SATA SSD also.

- 1 Place the SSD thermal pad into the slot on the system board [1].
- 2 Insert the M.2 PCIe SSD to the connector on the system board [2].





- 3 Install the:
  - a [Hard drive and optical drive module](#)
  - b [HDD assembly](#)
  - c [Front bezel](#)
  - d [Side cover](#)
- 4 Follow the procedure in [After working inside your computer](#).

## Power supply unit

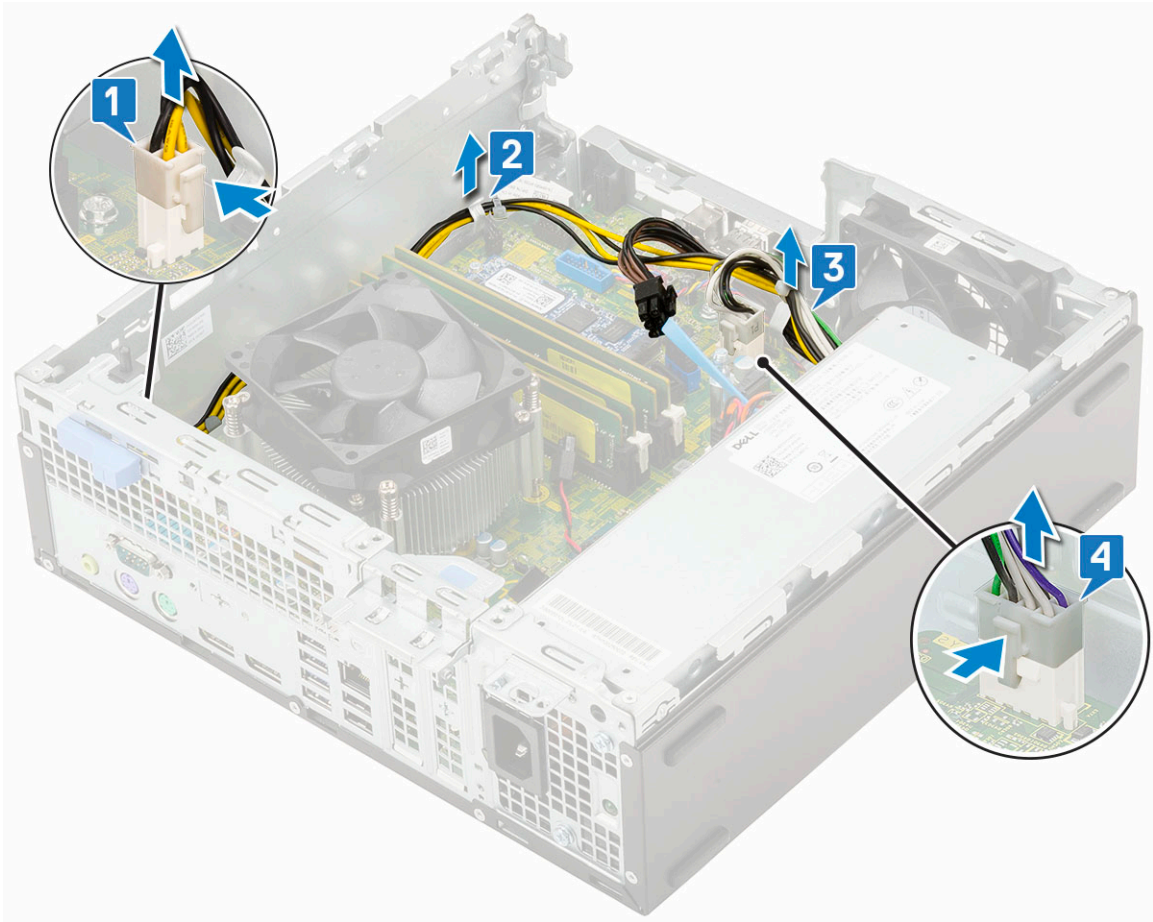
### Removing power supply unit or PSU

- 1 Follow the procedure in [Before working inside your computer](#).
- 2 Remove the:
  - a [Side cover](#)
  - b [Front bezel](#)
  - c [HDD assembly](#)
  - d [Hard drive and optical drive module](#)
  - e [Heat sink duct](#)

f Heat sink fan

3 To release the PSU:

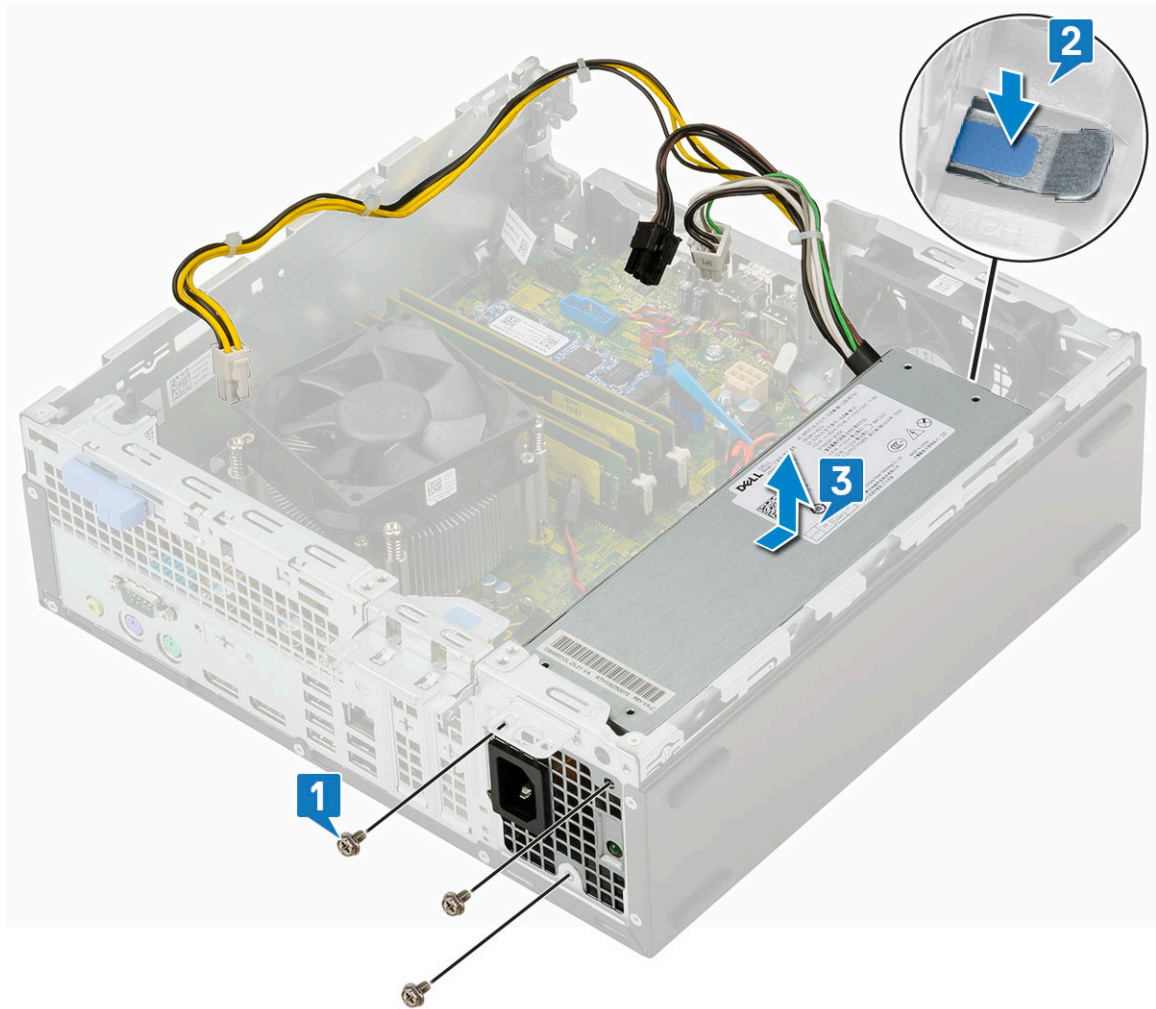
- a Disconnect the CPU power cable from the system board [1].
- b Unroute the power cables from the retention clips on the chassis [2,3].



- c Disconnect the system power cable from the connector on the system board [4].

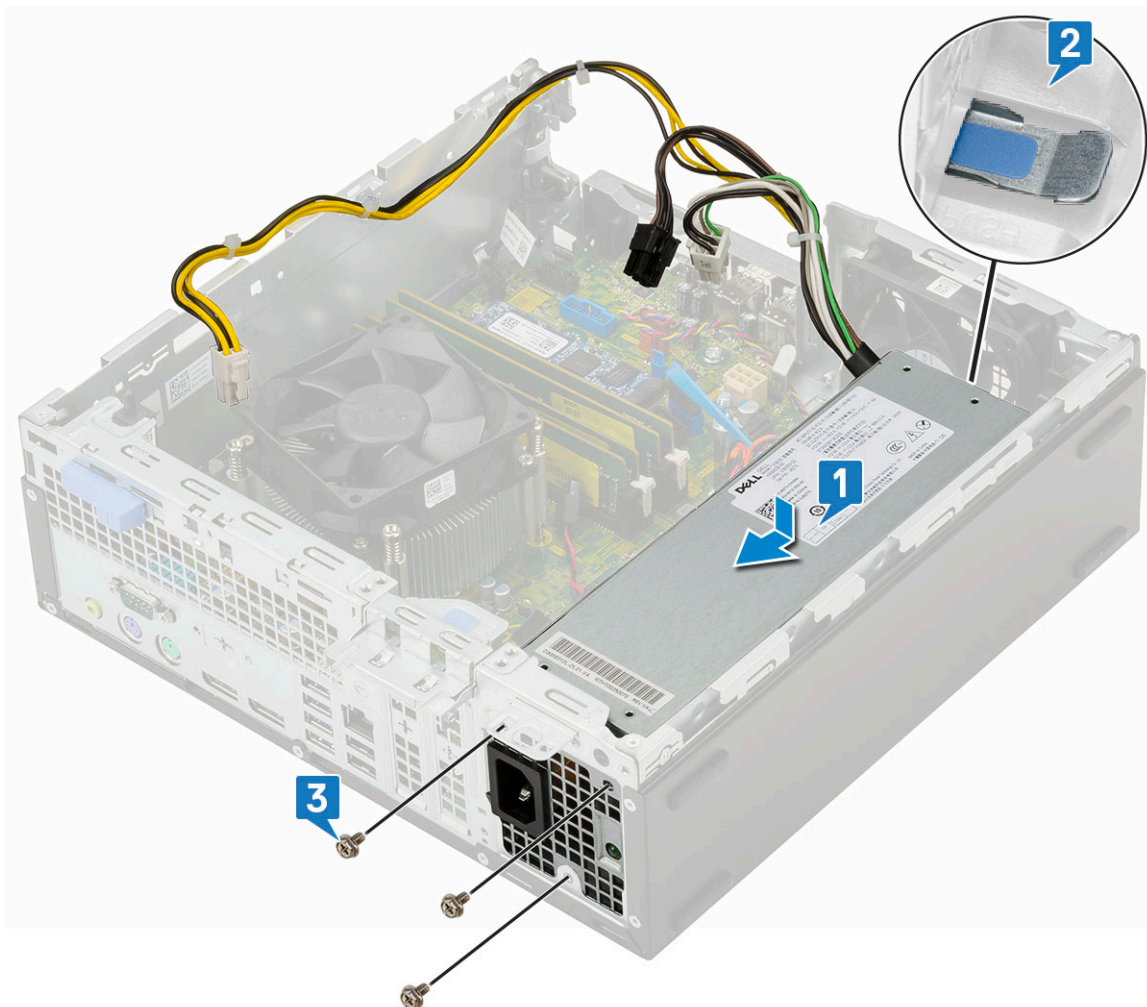
4 To remove the PSU:

- a Remove the screws (3) that secure the PSU to the system [1].
- b Press the blue release tab at the rear end of the PSU unit [2].
- c Slide the PSU and lift it away from the system [3].



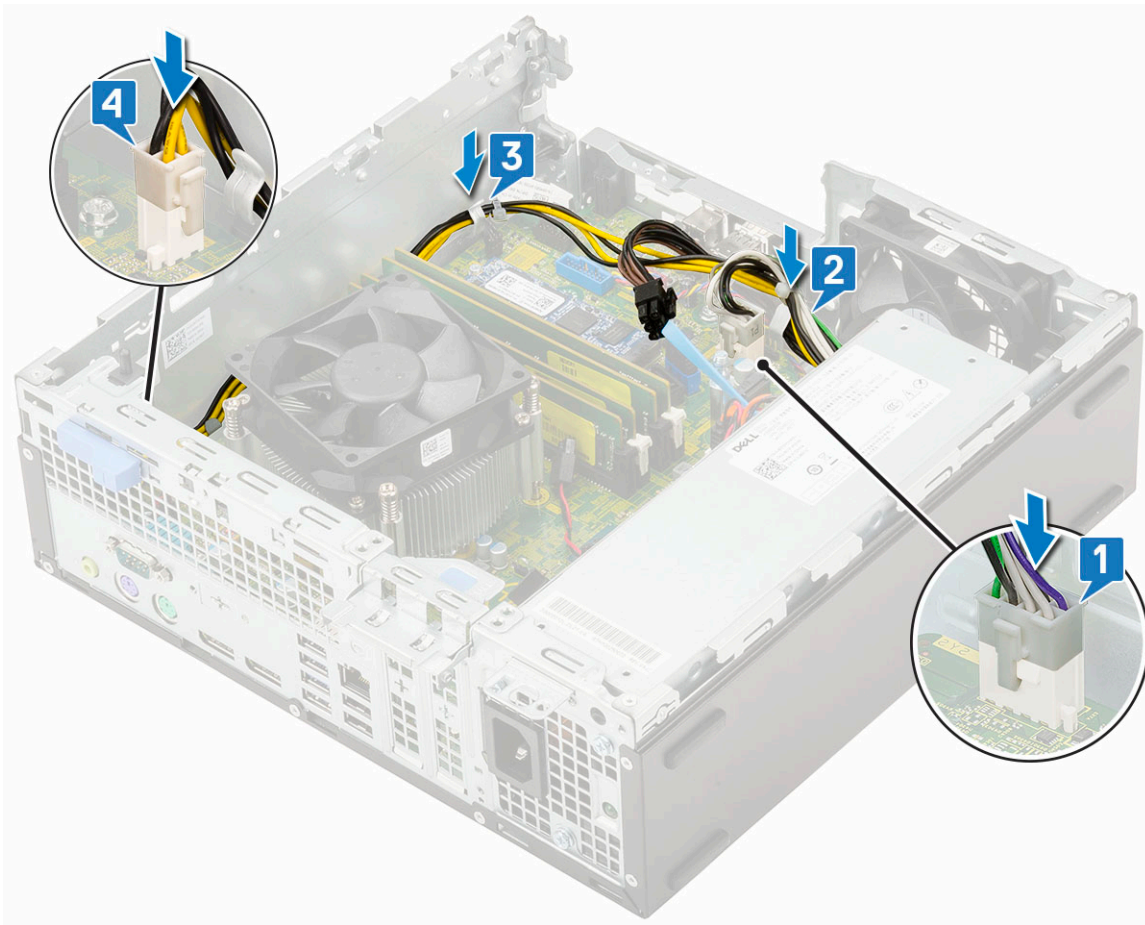
## Installing the power supply unit or PSU

- 1 Insert the PSU in the chassis and slide it towards the back of the system to secure it [1, 2].
- 2 Replace the screws to secure the PSU to the rear chassis of the system [3].



- 3 Connect the power cable to the connector on the system board [1].
- 4 Route the CPU power cable through the retention clips [2,3].
- 5 Connect the CPU power cable to the connector on the system board [4].





- 6 Install the:
  - a Heat sink fan
  - b Heat sink duct
  - c Hard drive and optical drive module
  - d HDD assembly
  - e Front bezel
  - f Side cover
- 7 Follow the procedure in [After working inside your computer](#).

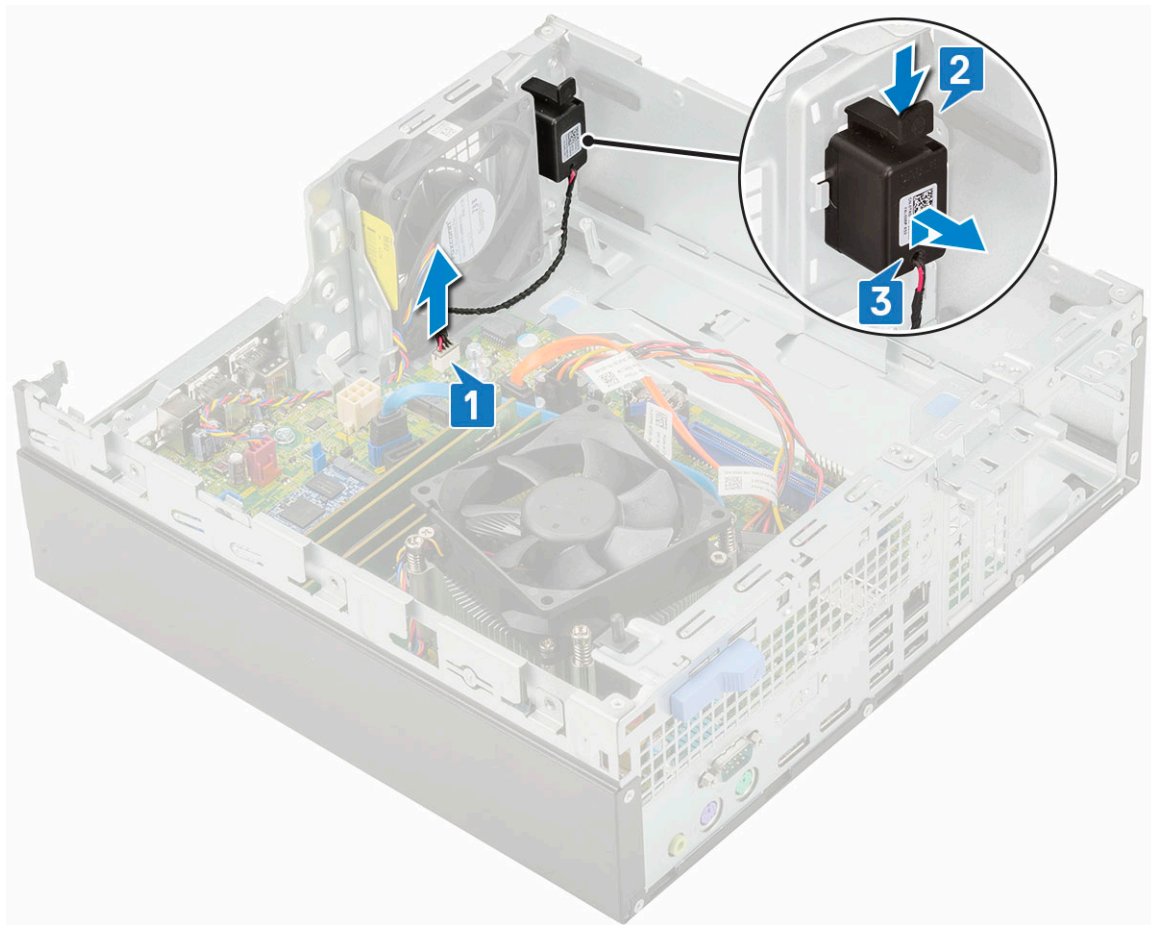
## Speaker

### Removing speaker

- 1 Follow the procedure in [Before working inside your computer](#).
- 2 Remove the:
  - a Side cover
  - b Front bezel
  - c HDD assembly
  - d Hard drive and optical drive module
  - e Heat sink duct
  - f Heat sink fan
  - g PSU
- 3 To remove the speaker:
  - a Disconnect the speaker cable from the connector on the system board [1].

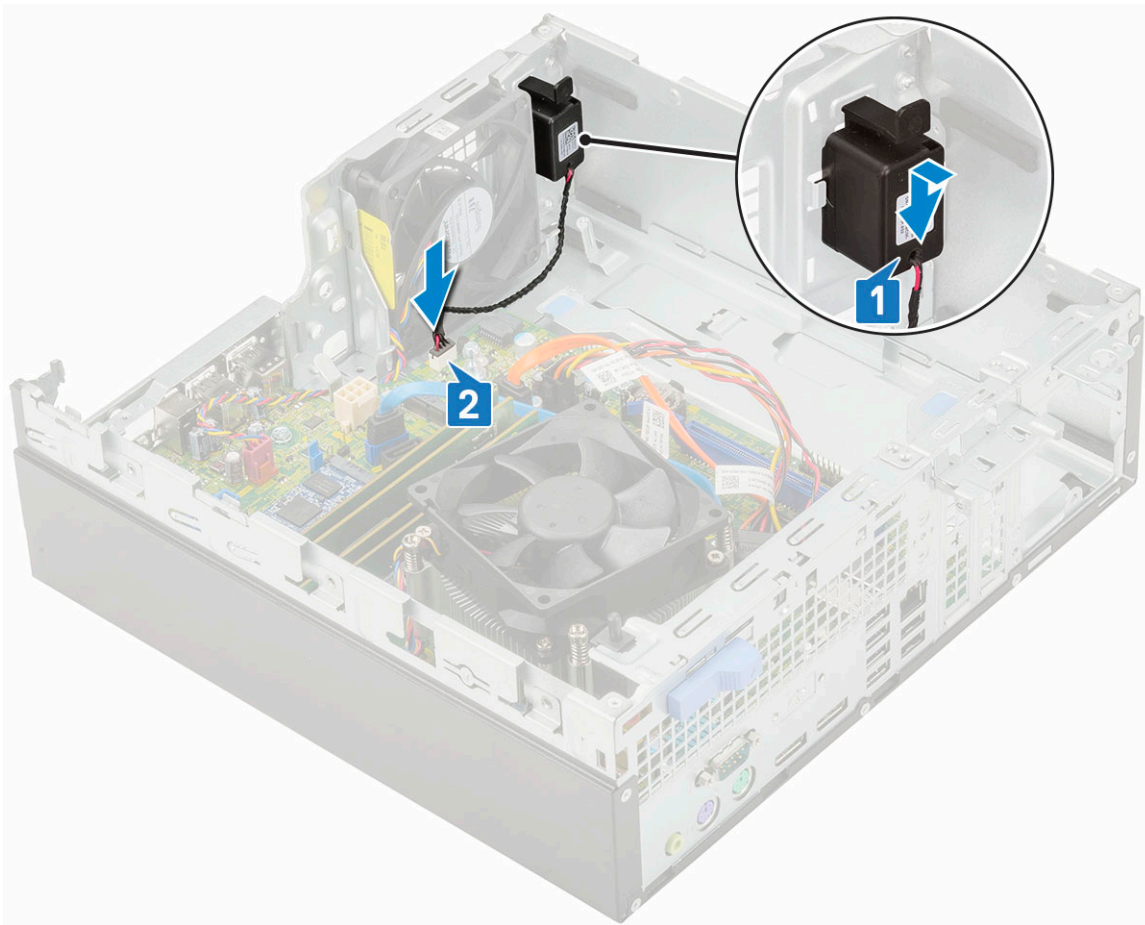


- b Press the release tab [2] and pull the speaker out from the system chassis [3].



## Installing the speaker

- 1 Insert the speaker into the slot on the system chassis and press it until it clicks into place [1, 2].
- 2 Connect the speaker cable to the connector on the system board [3].



- 3 Install the:
  - a PSU
  - b Heat sink fan
  - c Heat sink duct
  - d HDD assembly
  - e Hard drive and optical drive module
  - f Front bezel
  - g Side cover
- 4 Follow the procedure in [After working inside your computer](#).

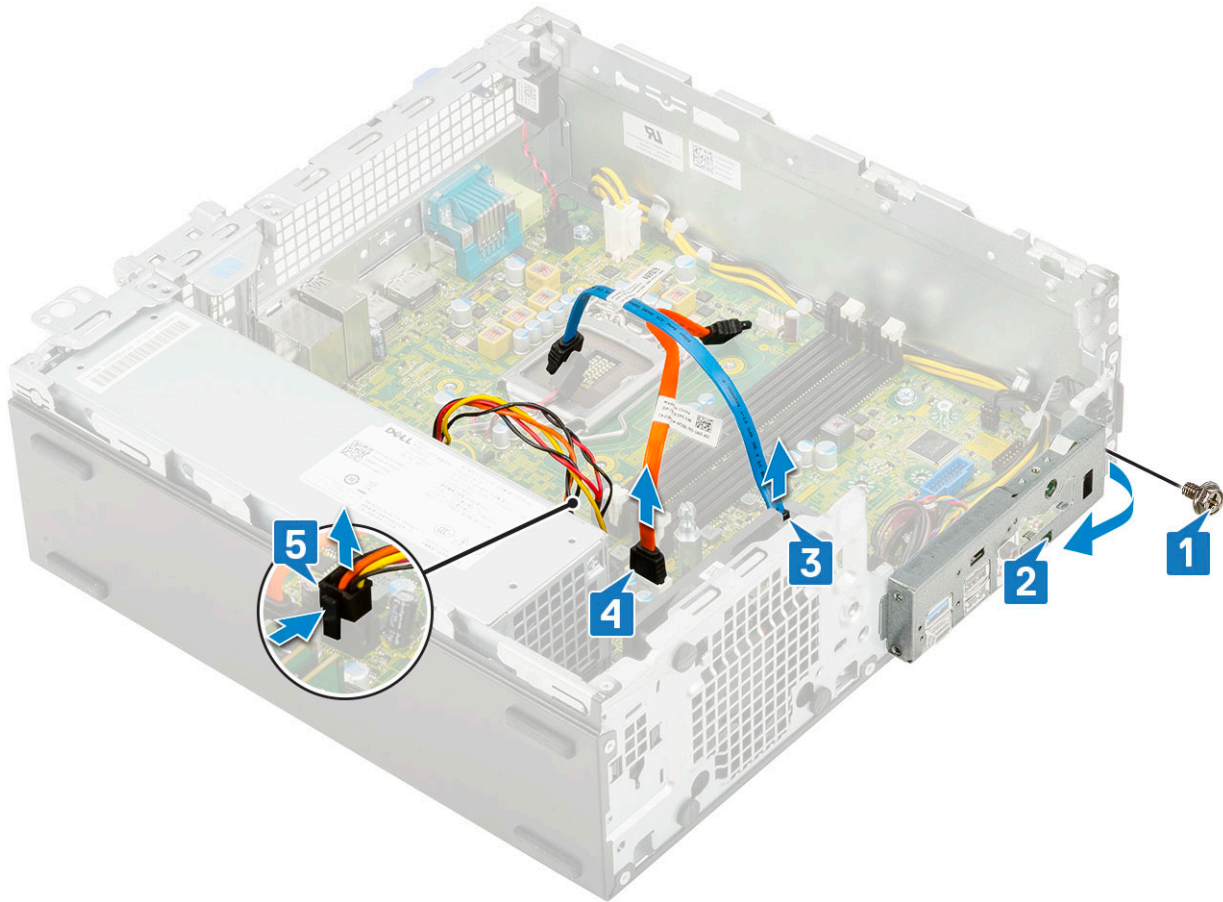
## System board

### Removing system board

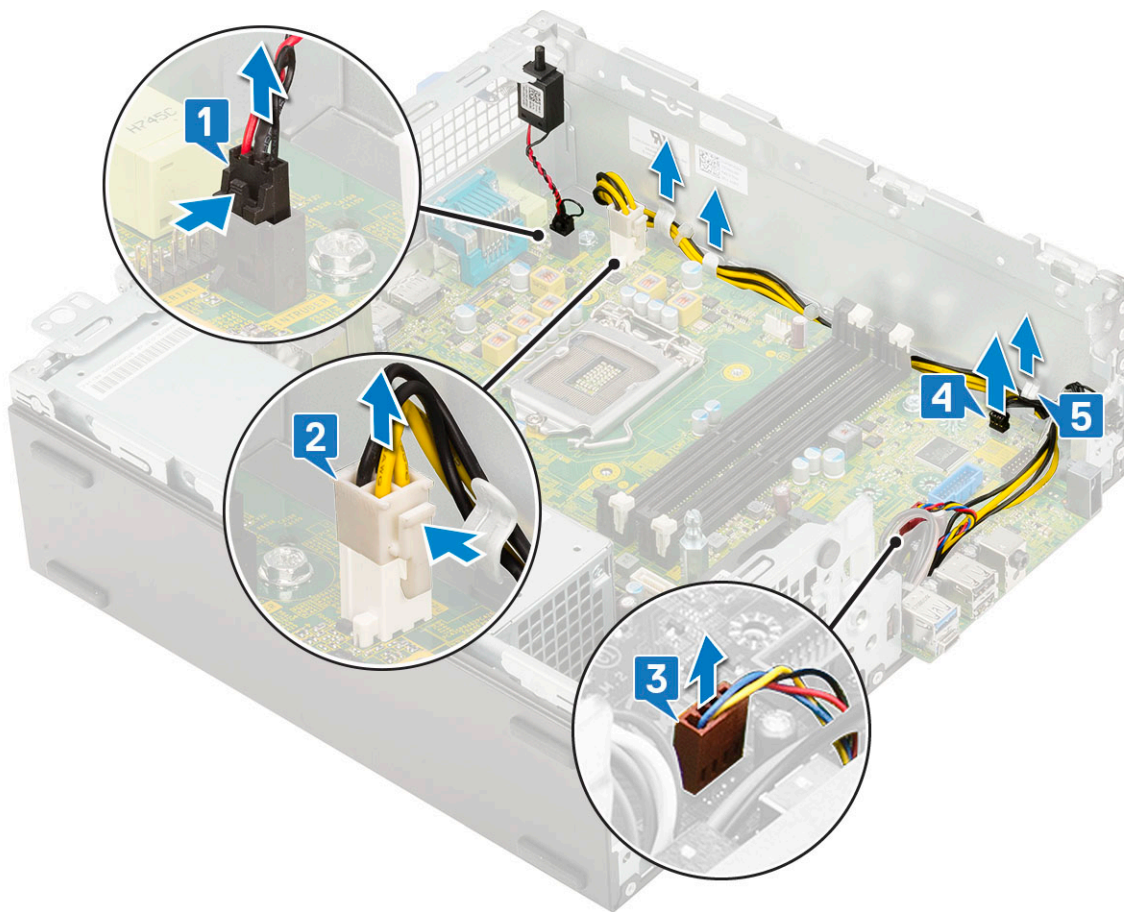
- 1 Follow the procedure in [Before working inside your computer](#).
- 2 Remove the:
  - a Side cover
  - b Front bezel
  - c HDD assembly
  - d Hard drive and optical drive module
  - e Heat sink duct
  - f Heat sink fan
  - g Heat sink
  - h Processor

- i Memory module
- j M.2 PCIe SSD

- 3 To remove the I/O panel:
- a Remove the screw that secures the I/O panel [1].
  - b Rotate the I/O panel and remove it from the system [2].
  - c Disconnect the hard drive data cable [3], optical drive data cable [4] and power cable [5] from the connectors on the system board.

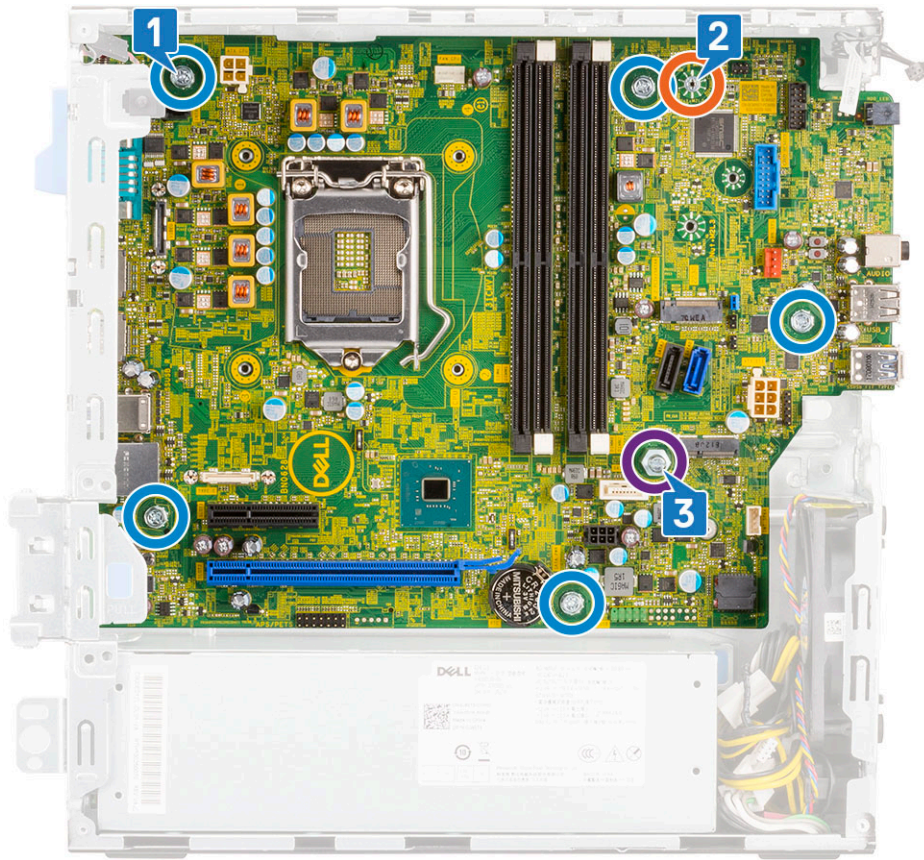


- 4 Disconnect the following cables from the connectors on the system board:
- a Intrusion switch [1]
  - b CPU power [2]
  - c Power cable [3]
  - d Power switch [4]
- 5 Unroute the PSU cables from the retention clips [5].



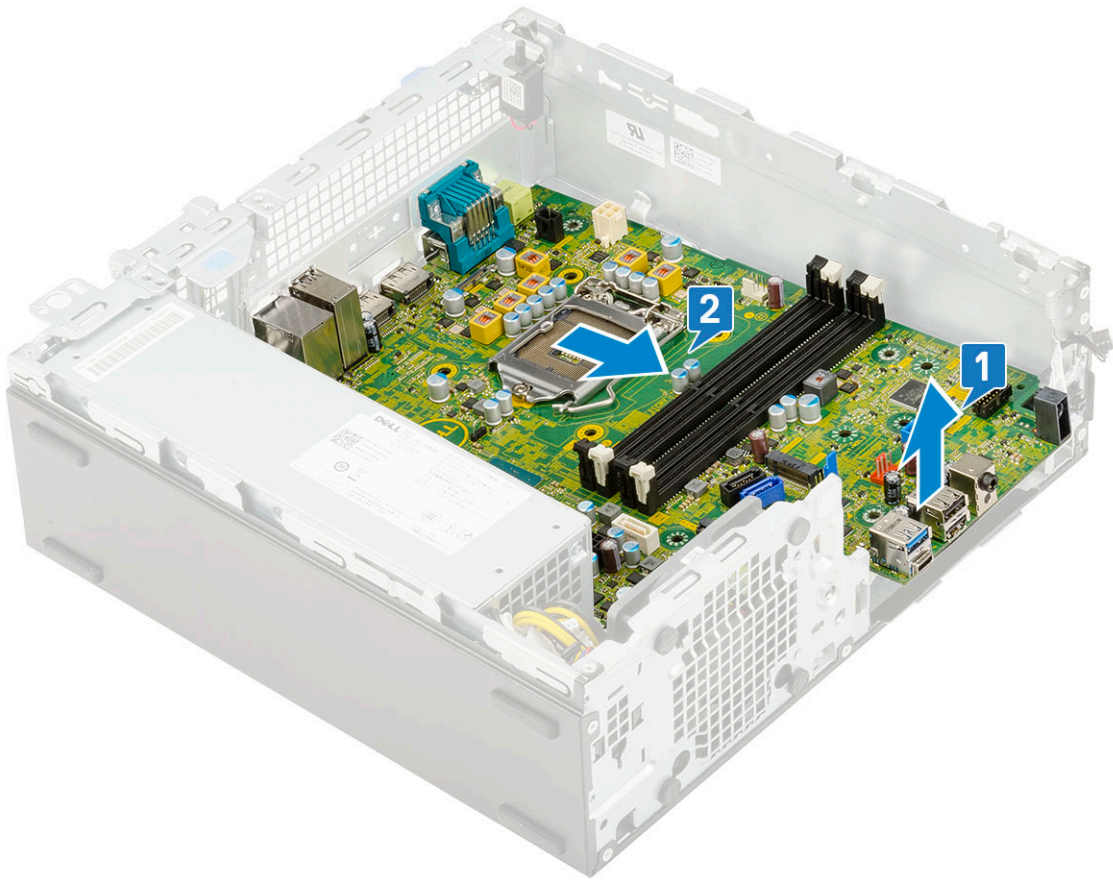
- 6 To remove the screws from the system board:
- a Remove the screws (5) that secure the system board to the chassis [1].
  - b Remove the standoff single (#6-32) screw [2] and single (M3x5) screw that secures the system board to the system [3].





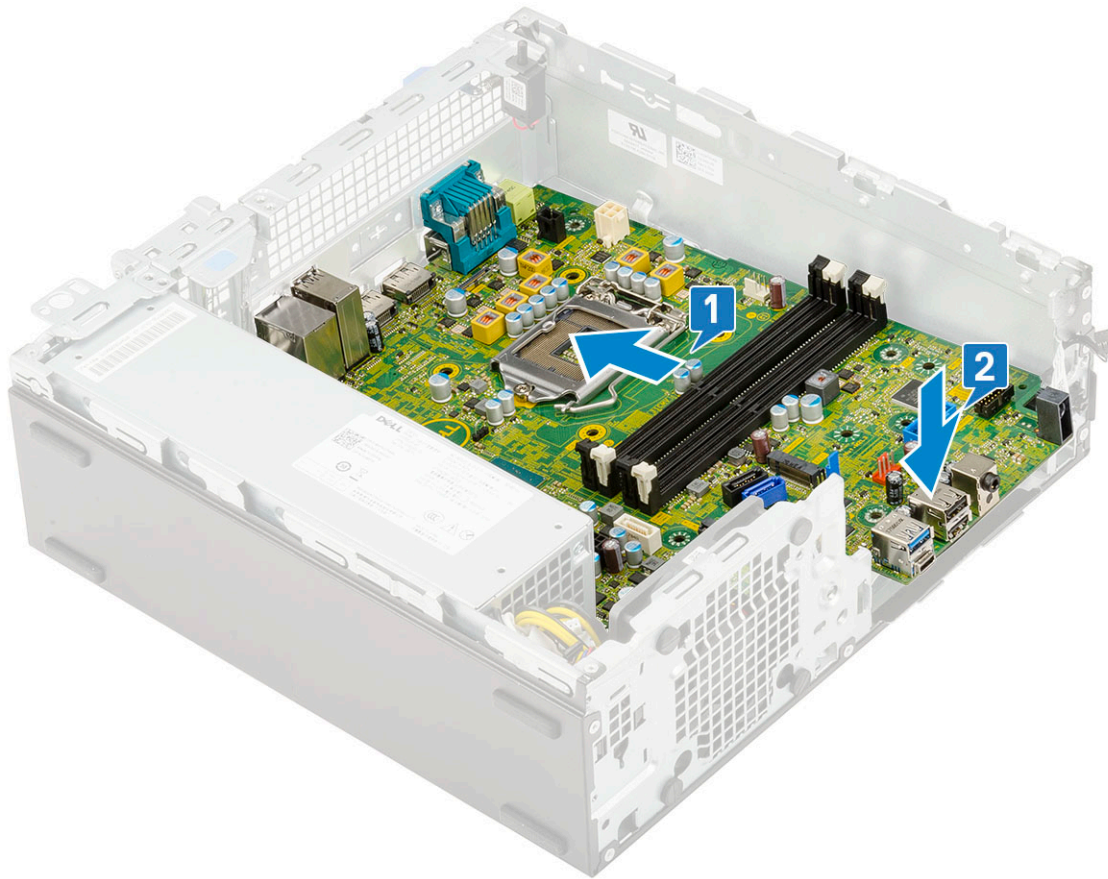
- 7 To remove the system board:
  - a Lift and slide the system board away from the system [1, 2].



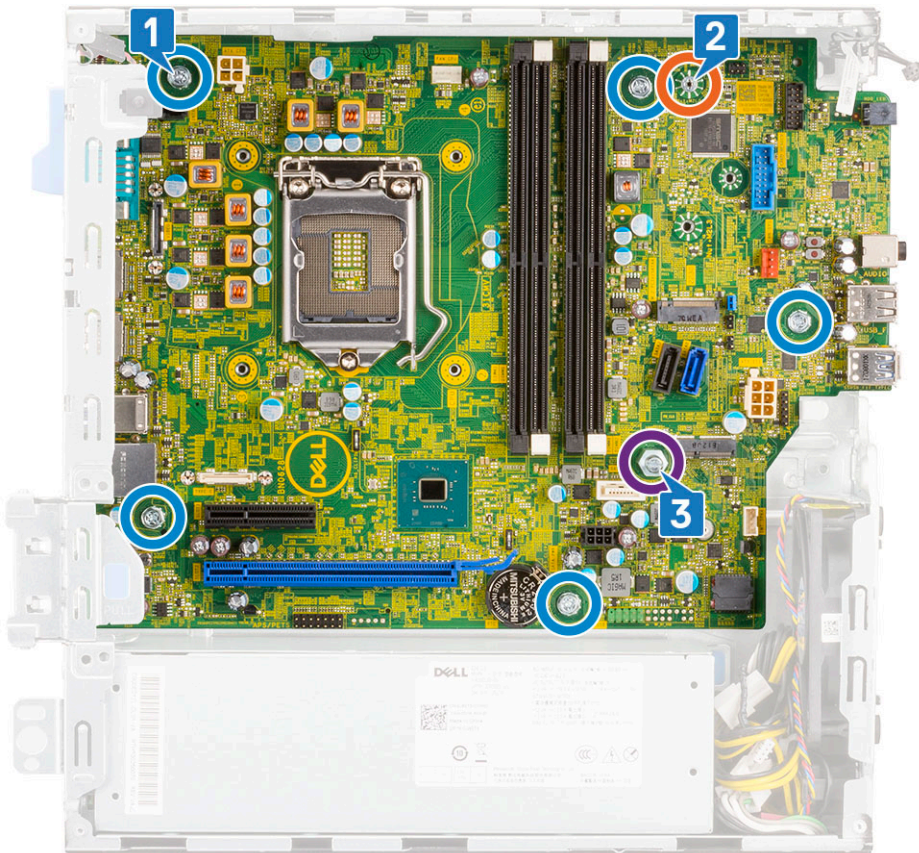


## Installing the system board

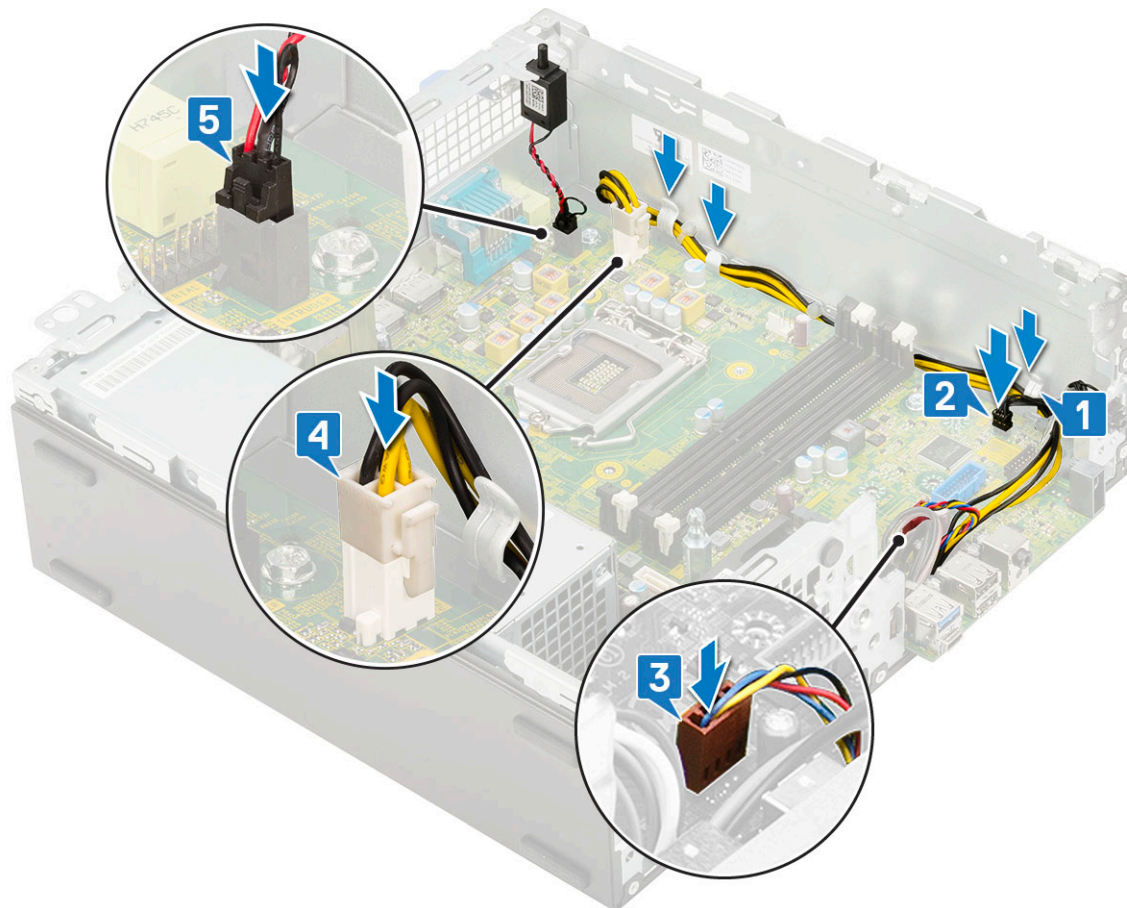
- 1 Hold the system board by its edges, and align it towards the back of the system.
- 2 Lower the system board into the system chassis until the connectors at the back of the system board align with the slots on the chassis, and the screw holes on the system board align with the standoffs on the system chassis [1,2].



- 3 Replace the single (#6-32) screw, single (M3x5) screw and screws (5) that secure the system board to the system [1,2].

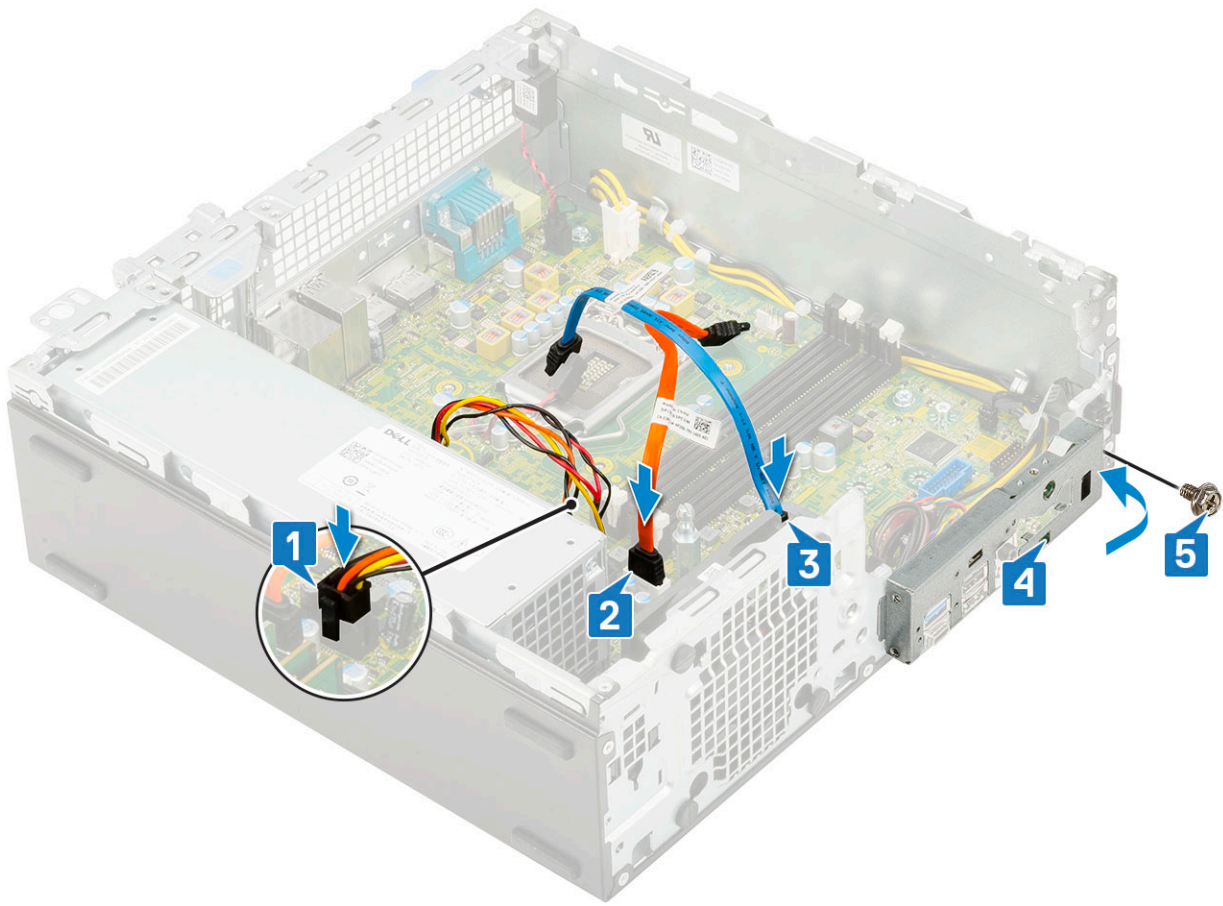


- 4 Route all the cables through the routing clips [1].
- 5 Align the cables with the pins on connectors on the system board and connect the following cables to the system board:
  - a Power switch [2]
  - b Power cable [3]
  - c CPU power [4]
  - d Intrusion switch [5]



- 6 Connect the power cable, optical drive data cable and hard drive data cable [1, 2, 3].
- 7 Insert the hook on the I/O panel into the slot on the chassis and rotate to close the I/O panel [4].
- 8 Replace the screw to secure the I/O panel to the chassis [5].





- 9 Install the:
- a [M.2 PCIe SSD](#)
  - b [Memory module](#)
  - c [Processor](#)
  - d [Heat sink](#)
  - e [Heat sink fan](#)
  - f [Heat sink duct](#)
  - g [Hard drive and optical drive module](#)
  - h [HDD assembly](#)
  - i [Front bezel](#)
  - j [Side cover](#)
- 10 Follow the procedure in [After working inside your computer](#).



# Troubleshooting

## Enhanced Pre-Boot System Assessment — ePSA diagnostics

The ePSA diagnostics (also known as system diagnostics) performs a complete check of your hardware. The ePSA is embedded with the BIOS and is launched by the BIOS internally. The embedded system diagnostics provides a set of options for particular devices or device groups allowing you to:

- Run tests automatically or in an interactive mode
- Repeat tests
- Display or save test results
- Run thorough tests to introduce additional test options to provide extra information about the failed device(s)
- View status messages that inform you if tests are completed successfully
- View error messages that inform you of problems encountered during testing

 **CAUTION:** Use the system diagnostics to test only your computer. Using this program with other computers may cause invalid results or error messages.

 **NOTE:** Some tests for specific devices require user interaction. Always ensure that you are present at the computer terminal when the diagnostic tests are performed.

## Running the ePSA Diagnostics

- 1 Invoke diagnostics boot by either of the methods suggested above
- 2 Once on one time boot menu use up/down arrow key to navigate to ePSA or diagnostics and press <return> key to launch  
Fn+PWR will flash diagnostics boot selected on screen and launch ePSA/diagnostics directly.
- 3 On the boot menu screen, select the **Diagnostics** option.
- 4 Press the arrow in the lower-right corner to go to the page listing.  
The items detected are listed and will be tested
- 5 If there are any issues, error codes are displayed.  
Note the error code and validation number and contact Dell.

## To run a diagnostic test on a specific device

- 1 Press Esc and click **Yes** to stop the diagnostic test.
- 2 Select the device from the left pane and click **Run Tests**.
- 3 If there are any issues, error codes are displayed.  
Note the error code and validation number and contact Dell.

## Diagnostics

The computer POST (Power On Self Test) ensures that it meets the basic computer requirements and the hardware is working appropriately before the boot process begins. If the computer passes the POST, the computer continues to start in a normal mode.

However, if the computer fails the POST, the computer emits a series of LED codes during the start-up. The system LED is integrated on the Power button.

The following table shows different light patterns and what they indicate.

**Table 2. Diagnostics**

Number of LED flashes	Problem description
2 amber, 1 Amber	Motherboard failure
2 Amber, 2 Amber	Motherboard, PSU or PSU Cabling failure
2 Amber, 3 Amber	Motherboard, memory or CPU failure
2 Amber, 4 Amber	CMOS battery failure

## Diagnostic error messages

**Table 3. Diagnostic error messages**

Error messages	Description
AUXILIARY DEVICE FAILURE	The touchpad or external mouse may be faulty. For an external mouse, check the cable connection. Enable the <b>Pointing Device</b> option in the System Setup program.
BAD COMMAND OR FILE NAME	Ensure that you have spelled the command correctly, put spaces in the proper place, and used the correct path name.
CACHE DISABLED DUE TO FAILURE	The primary cache internal to the microprocessor has failed. <b>Contact Dell</b>
CD DRIVE CONTROLLER FAILURE	The optical drive does not respond to commands from the computer.
DATA ERROR	The hard drive cannot read the data.
DECREASING AVAILABLE MEMORY	One or more memory modules may be faulty or improperly seated. Reinstall the memory modules or, if necessary, replace them.
DISK C: FAILED INITIALIZATION	The hard drive failed initialization. Run the hard drive tests in <b>Dell Diagnostics</b> .
DRIVE NOT READY	The operation requires a hard drive in the bay before it can continue. Install a hard drive in the hard drive bay.
ERROR READING PCMCIA CARD	The computer cannot identify the ExpressCard. Reinsert the card or try another card.
EXTENDED MEMORY SIZE HAS CHANGED	The amount of memory recorded in non-volatile memory (NVRAM) does not match the memory module installed in the computer. Restart the computer. If the error appears again, <b>Contact Dell</b>
THE FILE BEING COPIED IS TOO LARGE FOR THE DESTINATION DRIVE	The file that you are trying to copy is too large to fit on the disk, or the disk is full. Try copying the file to a different disk or use a larger capacity disk.
A FILENAME CANNOT CONTAIN ANY OF THE FOLLOWING CHARACTERS: \ / : * ? " < >   -	Do not use these characters in filenames.
GATE A20 FAILURE	A memory module may be loose. Reinstall the memory module or, if necessary, replace it.

Error messages	Description
GENERAL FAILURE	The operating system is unable to carry out the command. The message is usually followed by specific information. For example, <b>Printer out of paper</b> . Take the appropriate action.
HARD-DISK DRIVE CONFIGURATION ERROR	The computer cannot identify the drive type. Shut down the computer, remove the hard drive, and boot the computer from an optical drive. Then, shut down the computer, reinstall the hard drive, and restart the computer. Run the <b>Hard Disk Drive</b> tests in <b>Dell Diagnostics</b> .
HARD-DISK DRIVE CONTROLLER FAILURE 0	The hard drive does not respond to commands from the computer. Shut down the computer, remove the hard drive, and boot the computer from an optical drive. Then, shut down the computer, reinstall the hard drive, and restart the computer. If the problem persists, try another drive. Run the <b>Hard Disk Drive</b> tests in <b>Dell Diagnostics</b> .
HARD-DISK DRIVE FAILURE	The hard drive does not respond to commands from the computer. Shut down the computer, remove the hard drive, and boot the computer from an optical drive. Then, shut down the computer, reinstall the hard drive, and restart the computer. If the problem persists, try another drive. Run the <b>Hard Disk Drive</b> tests in <b>Dell Diagnostics</b> .
HARD-DISK DRIVE READ FAILURE	The hard drive may be defective. Shut down the computer, remove the hard drive, and boot the computer from an optical. Then, shut down the computer, reinstall the hard drive, and restart the computer. If the problem persists, try another drive. Run the <b>Hard Disk Drive</b> tests in <b>Dell Diagnostics</b> .
INSERT BOOTABLE MEDIA	The operating system is trying to boot to non-bootable media, such as an optical drive. Insert bootable media.
INVALID CONFIGURATION INFORMATION-PLEASE RUN SYSTEM SETUP PROGRAM	The system configuration information does not match the hardware configuration. The message is most likely to occur after a memory module is installed. Correct the appropriate options in the system setup program.
KEYBOARD CLOCK LINE FAILURE	For external keyboards, check the cable connection. Run the <b>Keyboard Controller</b> test in <b>Dell Diagnostics</b> .
KEYBOARD CONTROLLER FAILURE	For external keyboards, check the cable connection. Restart the computer, and avoid touching the keyboard or the mouse during the boot routine. Run the <b>Keyboard Controller</b> test in <b>Dell Diagnostics</b> .
KEYBOARD DATA LINE FAILURE	For external keyboards, check the cable connection. Run the <b>Keyboard Controller</b> test in <b>Dell Diagnostics</b> .
KEYBOARD STUCK KEY FAILURE	For external keyboards or keypads, check the cable connection. Restart the computer, and avoid touching the keyboard or keys during the boot routine. Run the <b>Stuck Key</b> test in <b>Dell Diagnostics</b> .
LICENSED CONTENT IS NOT ACCESSIBLE IN MEDIADIRECT	Dell MediaDirect cannot verify the Digital Rights Management (DRM) restrictions on the file, so the file cannot be played.
MEMORY ADDRESS LINE FAILURE AT ADDRESS, READ VALUE EXPECTING VALUE	A memory module may be faulty or improperly seated. Reinstall the memory module or, if necessary, replace it.

## Error messages

## Description

MEMORY ALLOCATION ERROR

The software you are attempting to run is conflicting with the operating system, another program, or a utility. Shut down the computer, wait for 30 seconds, and then restart it. Run the program again. If the error message still appears, see the software documentation.

MEMORY DOUBLE WORD LOGIC FAILURE AT ADDRESS, READ VALUE EXPECTING VALUE

A memory module may be faulty or improperly seated. Reinstall the memory module or, if necessary, replace it.

MEMORY ODD/EVEN LOGIC FAILURE AT ADDRESS, READ VALUE EXPECTING VALUE

A memory module may be faulty or improperly seated. Reinstall the memory module or, if necessary, replace it.

MEMORY WRITE/READ FAILURE AT ADDRESS, READ VALUE EXPECTING VALUE

A memory module may be faulty or improperly seated. Reinstall the memory module or, if necessary, replace it.

NO BOOT DEVICE AVAILABLE

The computer cannot find the hard drive. If the hard drive is your boot device, ensure that the drive is installed, properly seated, and partitioned as a boot device.

NO BOOT SECTOR ON HARD DRIVE

The operating system may be corrupted, **Contact Dell**.

NO TIMER TICK INTERRUPT

A chip on the system board may be malfunctioning. Run the **System Set** tests in **Dell Diagnostics**.

NOT ENOUGH MEMORY OR RESOURCES. EXIT SOME PROGRAMS AND TRY AGAIN

You have too many programs open. Close all windows and open the program that you want to use.

OPERATING SYSTEM NOT FOUND

Reinstall the operating system. If the problem persists, **Contact Dell**.

OPTIONAL ROM BAD CHECKSUM

The optional ROM has failed. **Contact Dell**.

SECTOR NOT FOUND

The operating system cannot locate a sector on the hard drive. You may have a defective sector or corrupted File Allocation Table (FAT) on the hard drive. Run the Windows error-checking utility to check the file structure on the hard drive. See **Windows Help and Support** for instructions (click **Start > Help and Support**). If a large number of sectors are defective, back up the data (if possible), and then format the hard drive.

SEEK ERROR

The operating system cannot find a specific track on the hard drive.

SHUTDOWN FAILURE

A chip on the system board may be malfunctioning. Run the **System Set** tests in **Dell Diagnostics**. If the message reappears, **Contact Dell**.

TIME-OF-DAY CLOCK LOST POWER

System configuration settings are corrupted. Connect your computer to an electrical outlet to charge the battery. If the problem persists, try to restore the data by entering the System Setup program, then immediately exit the program. If the message reappears, **Contact Dell**.

TIME-OF-DAY CLOCK STOPPED

The reserve battery that supports the system configuration settings may require recharging. Connect your computer to an electrical outlet to charge the battery. If the problem persists, **Contact Dell**.

TIME-OF-DAY NOT SET-PLEASE RUN THE SYSTEM SETUP PROGRAM

The time or date stored in the system setup program does not match the system clock. Correct the settings for the **Date and Time** options.

TIMER CHIP COUNTER 2 FAILED

A chip on the system board may be malfunctioning. Run the **System Set** tests in **Dell Diagnostics**.



Error messages	Description
UNEXPECTED INTERRUPT IN PROTECTED MODE	The keyboard controller may be malfunctioning, or a memory module may be loose. Run the <b>System Memory</b> tests and the <b>Keyboard Controller</b> test in <b>Dell Diagnostics</b> or <b>Contact Dell</b> .
X:\ IS NOT ACCESSIBLE. THE DEVICE IS NOT READY	Insert a disk into the drive and try again.


## System error messages

**Table 4. System error messages**

System message	Description
Alert! Previous attempts at booting this system have failed at checkpoint [nnnn]. For help in resolving this problem, please note this checkpoint and contact Dell Technical Support	The computer failed to complete the boot routine three consecutive times for the same error.
CMOS checksum error	RTC is reset, <b>BIOS Setup</b> default has been loaded.
CPU fan failure	CPU fan has failed.
System fan failure	System fan has failed.
Hard-disk drive failure	Possible hard disk drive failure during POST.
Keyboard failure	Keyboard failure or loose cable. If reseating the cable does not solve the problem, replace the keyboard.
No boot device available	No bootable partition on hard disk drive, the hard disk drive cable is loose, or no bootable device exists. <ul style="list-style-type: none"> <li>If the hard drive is your boot device, ensure that the cables are connected and that the drive is installed properly and partitioned as a boot device.</li> <li>Enter system setup and ensure that the boot sequence information is correct.</li> </ul>
No timer tick interrupt	A chip on the system board might be malfunctioning or motherboard failure.
NOTICE - Hard Drive SELF MONITORING SYSTEM has reported that a parameter has exceeded its normal operating range. Dell recommends that you back up your data regularly. A parameter out of range may or may not indicate a potential hard drive problem	S.M.A.R.T error, possible hard disk drive failure.

## Getting help

### Contacting Dell

 **NOTE:** If you do not have an active Internet connection, you can find contact information on your purchase invoice, packing slip, bill, or Dell product catalog.

Dell provides several online and telephone-based support and service options. Availability varies by country and product, and some services may not be available in your area. To contact Dell for sales, technical support, or customer service issues:

- 1 Go to **Dell.com/support**.
- 2 Select your support category.
- 3 Verify your country or region in the **Choose a Country/Region** drop-down list at the bottom of the page.
- 4 Select the appropriate service or support link based on your need.