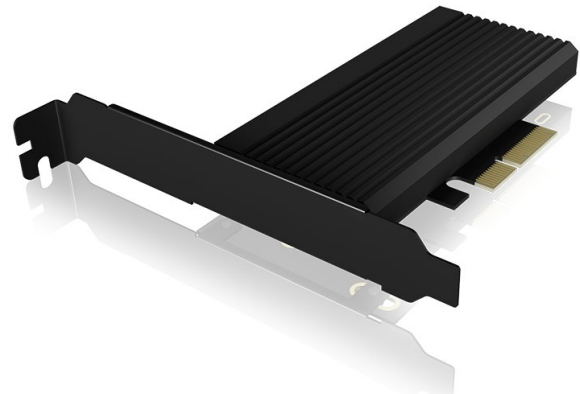


## ICY BOX IB-PCI208-HS

PCIe extension card with M.2 M-Key  
socket for an NVMe SSD

### Key features

- M.2 PCIe NVMe to PCIe 4.0 x4
- Data transfer rates of up to 64 Gbit/s
- Supports M.2 22x 30/42/60/80 NVMe SSDs
- Heat sink made of aluminium incl. thermal pads
- Use of double-sided SSDs possible
- Low- and full-profile bracket



### Packing content

IB-PCI208-HS, Heat sink, Full-profile bracket, Low-profile bracket  
Thick thermal pad (70 mm), Thin thermal pad (70 mm), Screw set  
Screwdriver, Manual

## Space for performance

You need free storage space and also want to move your data at a high transfer rate? Then use our PCIe expansion card and place it comfortably and perfectly integrated in a free PCIe slot of your PC! With PCIe 4.0 and up to 64 Gbit/s, your data travels ultra-fast!

### Technical data

<b>Model</b>	IB-PCI208-HS
<b>Article no.</b>	60830
<b>EAN code</b>	4250078171669
<b>Brand</b>	ICY BOX
<b>Colour</b>	Black
<b>Material</b>	Aluminium, plastic
<b>Interface to host computer</b>	PCIe x4
<b>Transfer rate</b>	Up to 64 Gbit/s
<b>Socket</b>	M-Key

### M.2 card size in mm

22x 30/42/60/80

### M.2 interface

PCIe (NVMe)

### Supported M.2 card keys

M.2 PCIe NVMe

### SSD capacity

Up to 2 TB

### Cooling

Passive

### Power supply

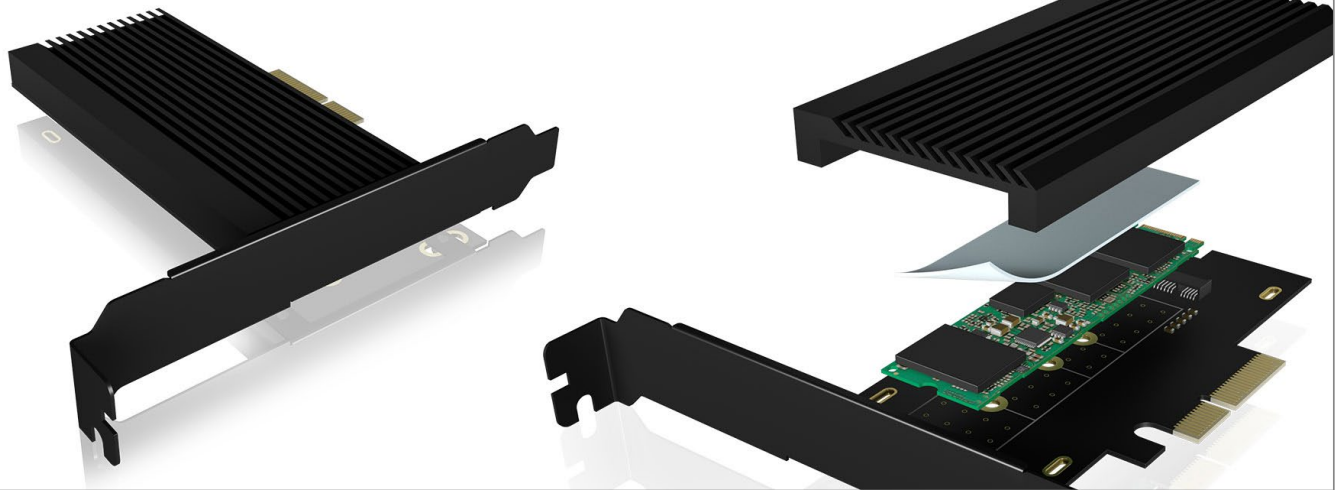
Bus-powered

### Operating system

Windows®

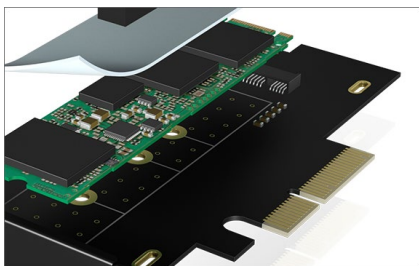
### System requirements

One free PCIe 4.0 x4 slot on your motherboard  
Hint: Downwards compatible with PCIe 3.0/2.0



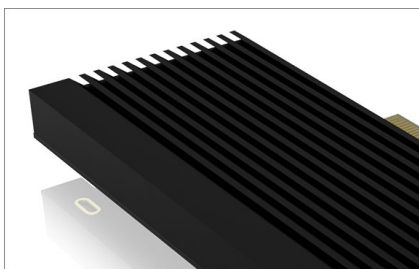
## ICY BOX **IB-PCI208-HS**

PCIe extension card with M.2 M-Key socket for an NVMe SSD



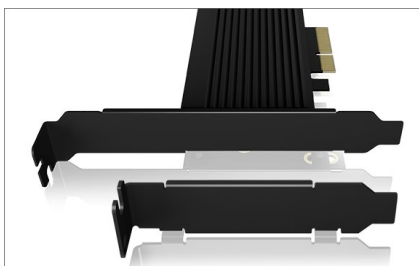
### Ignite the data turbo

If you want to give your M.2 SSD the turbo boost, then connect it with the super-fast PCIe 4.0 expansion card! This allows the data to reach transfer speeds of up to 64 Gbit/s - waiting was yesterday!



### Always stays cool

Even with the highest demands, your SSD always stays cool. The large, solid aluminium heat sink in the innovative cooling fin design ensures sufficient heat dissipation to keep your SSD running stably and efficiently. In addition, the expansion card comes with thermal pads that are applied to the M.2 SSD.



### Quite adaptable

The perfect carrier for your M.2 SSD is called IB-PCI208-HS. In the variants with full or half profile bracket, it integrates perfectly into a free slot of your PC. The inserted M.2 NVMe is to be connected via an M-Key socket.

#### Logistical data

**Packing unit:** 40 pcs. / carton  
**Total weight:** 9.4 kg  
**Gross weight (with packing):** 0.212 kg  
**Net weight:** 0.022 kg

**Dimension / carton:** 500x320x300 mm  
**Dimension (with packing):** 27x155x200 mm  
**Dimension of article:** 128x122x20 mm  
**Country of origin:** China