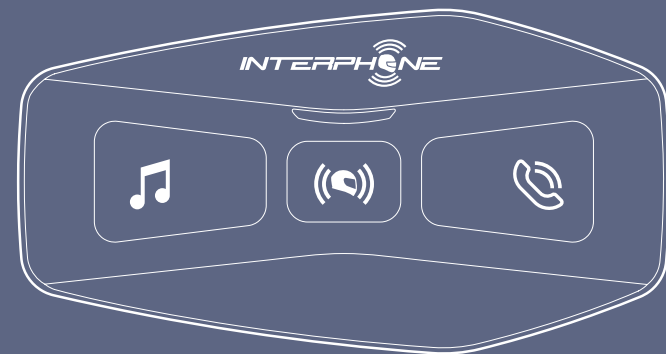


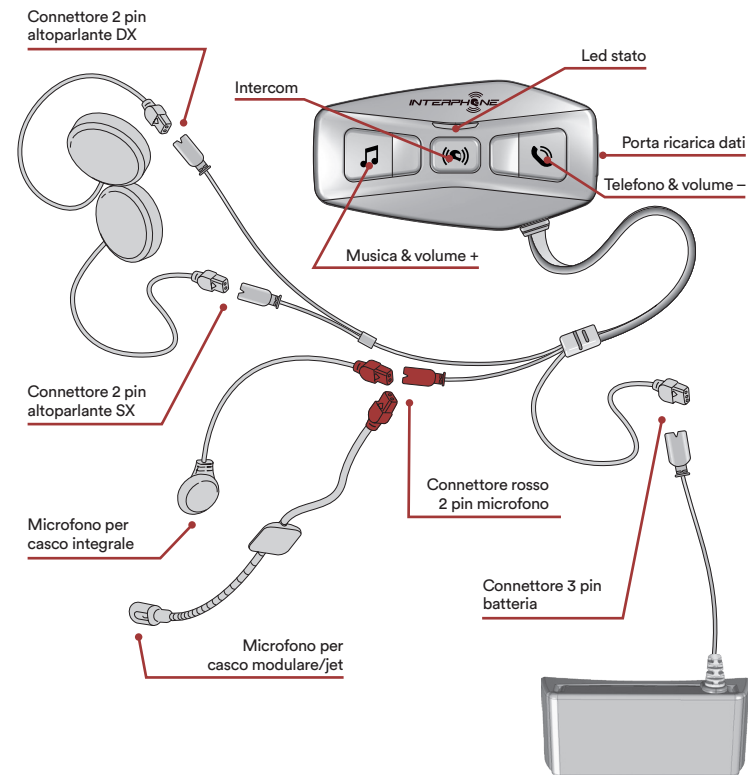


U-COM 2

Guida rapida



Panoramica del sistema

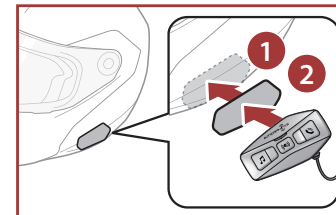


VERIFICARE LA PRESENZA DI AGGIORNAMENTI SOFTWARE SUL SITO www.interphone.com

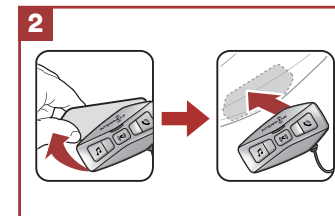
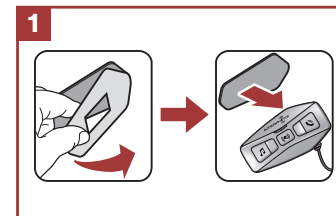
Cellularline S.p.A.
Via Lambrakis 1/A, 42122 Reggio Emilia, Italy
www.cellularline.com

Installazione

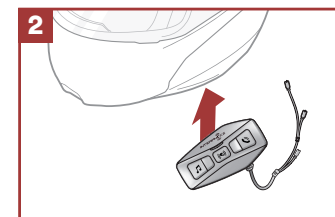
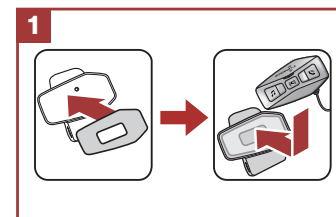
Utilizzo/applicazione con velcro dell'unità principale



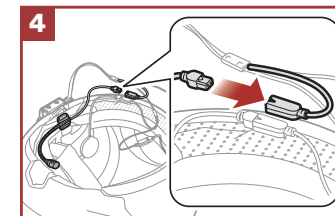
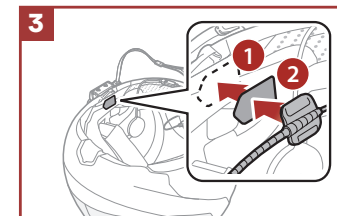
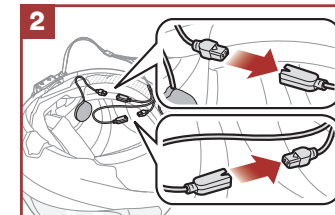
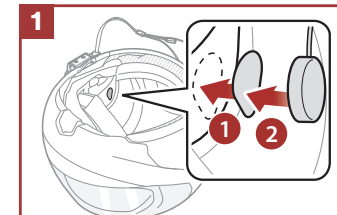
Utilizzo/applicazione con bi-adesivo dell'unità principale



Utilizzo/applicazione con staffa a clip dell'unità principale

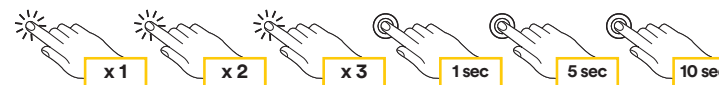


Installazione degli auricolari e del microfono



Legenda e funzioni base

Premere una volta	Premere due volte rapidamente	Premere tre volte rapidamente	Premere per un secondo	Premere per cinque secondi	Premere per dieci secondi
-------------------	-------------------------------	-------------------------------	------------------------	----------------------------	---------------------------



Accensione



Spegnimento



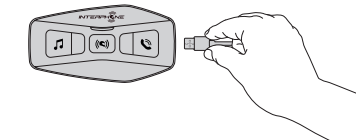
Alzare il volume



Abbassare il volume



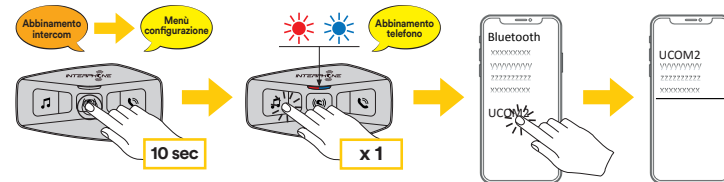
Ricarica



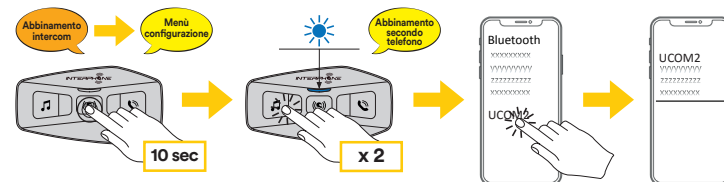


Abbinamento dispositivi Bluetooth®

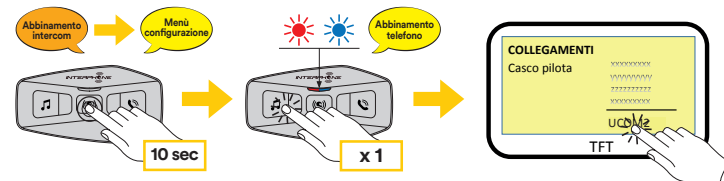
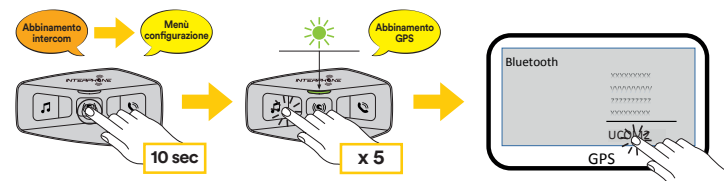
Abbinamento telefono principale (da eseguire a centralina accesa)



Abbinamento secondo telefono (da eseguire a centralina accesa)



Abbinamento GPS - TFT (da eseguire a centralina accesa)

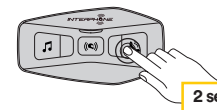


Telefono

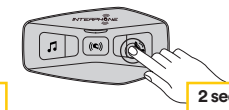
Rispondere alla chiamata



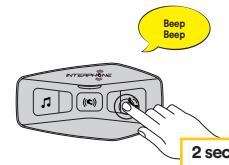
Terminare la telefonata



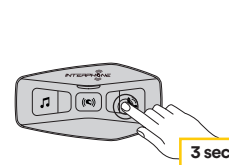
Rifiutare la telefonata



Assistente vocale



Speed dial



Musica e radio FM

Musica play



Musica pausa



Traccia avanti



Traccia indietro



Avvia/arresta
condivisione musica



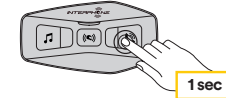
Radio FM avvia/arresta



Stazione avanti

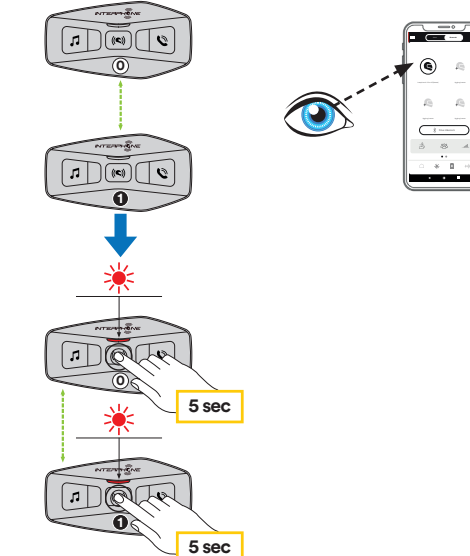


Stazione indietro



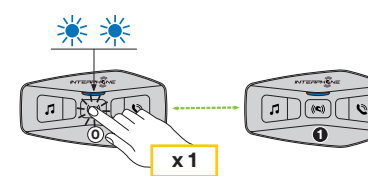
Bluetooth® Intercom - abbinamento

Abbinamento intercom a 2



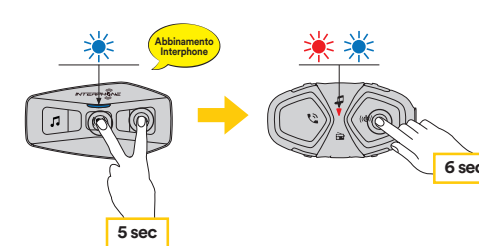
Bluetooth® Intercom - conferenza

Conferenza Intercom

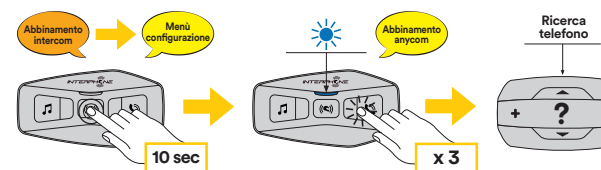


Bluetooth® Intercom - altri abbinamenti

Abbinamento serie precedenti (da eseguire a centralina spenta)



Abbinamento Anycom altre marche (eccetto Sena)



Configurazione

