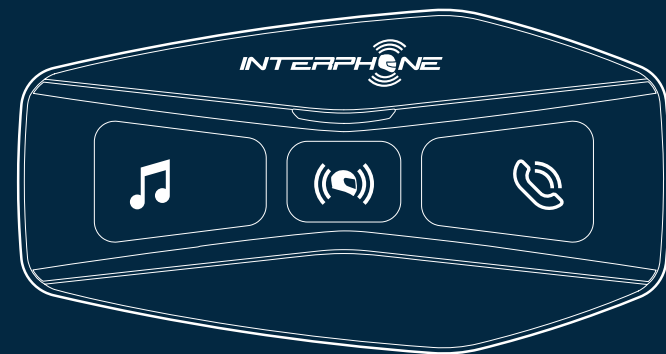


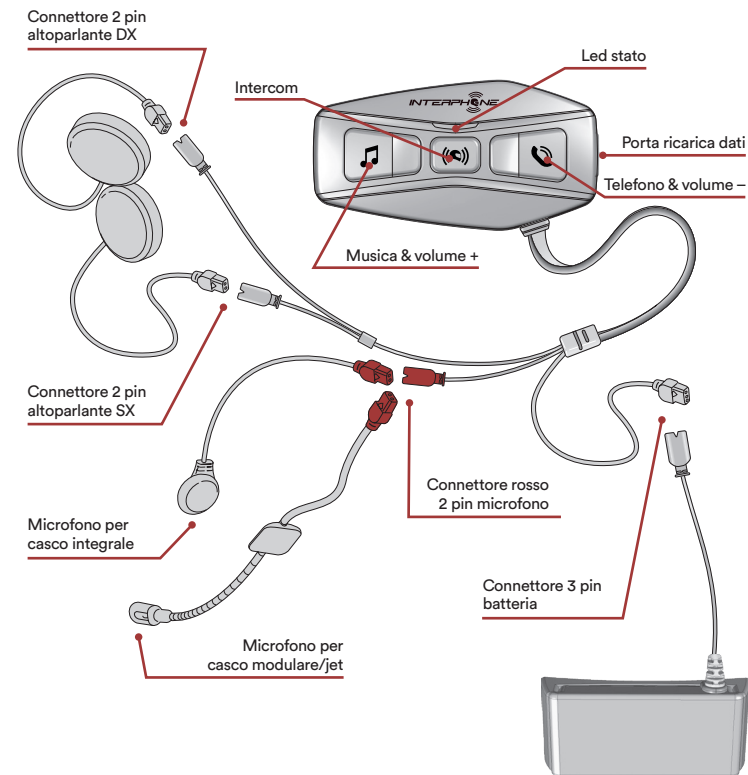


# U-COM 4

## Guida rapida



### Panoramica del sistema

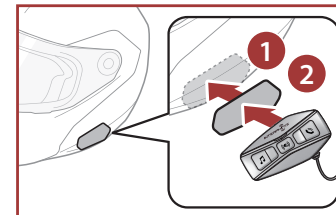


VERIFICARE LA PRESENZA DI AGGIORNAMENTI SOFTWARE SUL SITO [www.interphone.com](http://www.interphone.com)

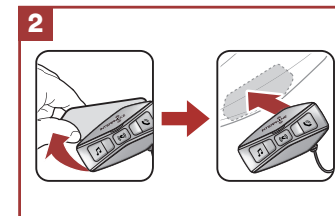
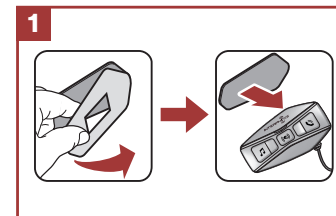
**Cellularline** S.p.A.  
Via Lambrakis 1/A, 42122 Reggio Emilia, Italy  
[www.cellularline.com](http://www.cellularline.com)

### Installazione

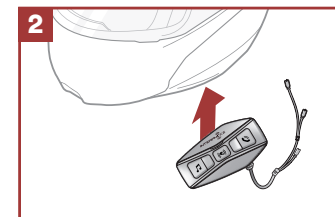
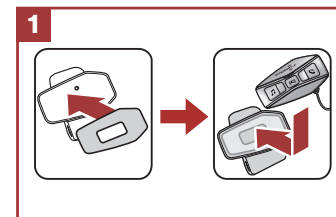
#### Utilizzo/applicazione con velcro dell'unità principale



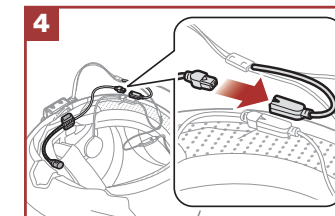
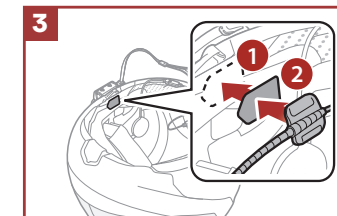
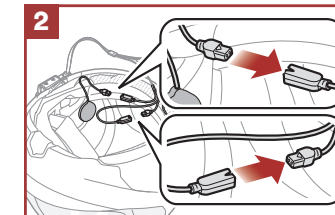
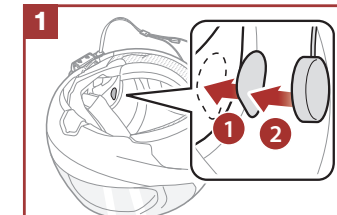
#### Utilizzo/applicazione con bi-adesivo dell'unità principale



#### Utilizzo/applicazione con staffa a clip dell'unità principale

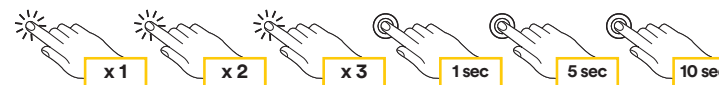


#### Installazione degli auricolari e del microfono

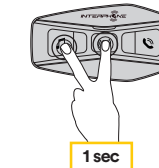


### Legenda e funzioni base

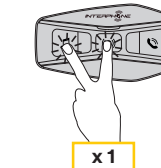
Premere una volta	Premere due volte rapidamente	Premere tre volte rapidamente	Premere per un secondo	Premere per cinque secondi	Premere per dieci secondi
-------------------	-------------------------------	-------------------------------	------------------------	----------------------------	---------------------------



Accensione



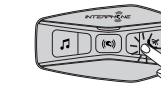
Spegnimento



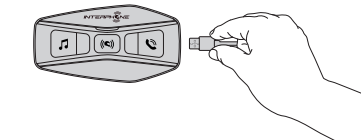
Alzare il volume



Abbassare il volume

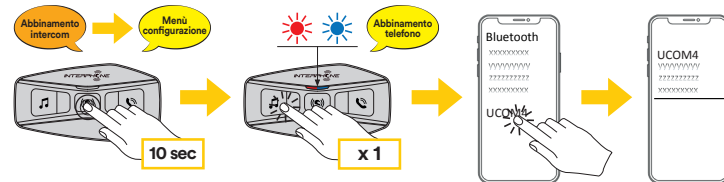


Ricarica

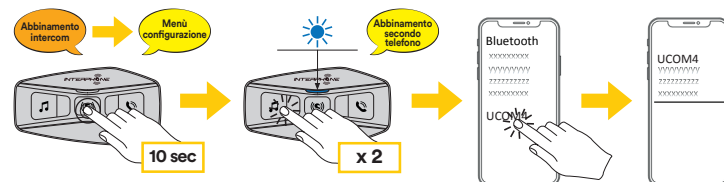


## Abbinamento dispositivi Bluetooth®

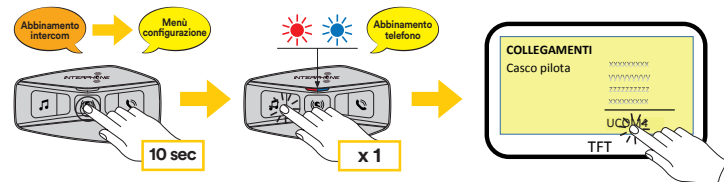
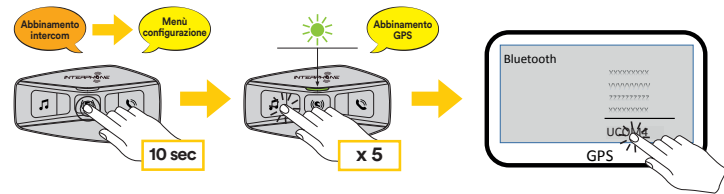
Abbinamento telefono principale (da eseguire a centralina accesa)



Abbinamento secondo telefono (da eseguire a centralina accesa)



Abbinamento GPS - TFT (da eseguire a centralina accesa)

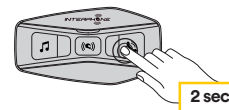


## Telefono

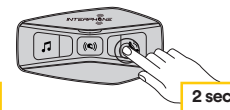
Rispondere alla chiamata



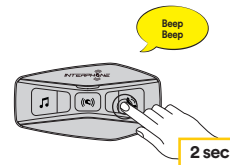
Terminare la telefonata



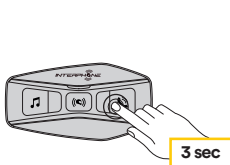
Rifiutare la telefonata



Assistente vocale



Speed dial



## Musica e radio FM

Musica play



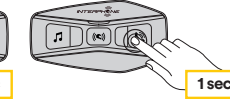
Musica pausa



Traccia avanti



Traccia indietro



Avvia/arresta condivisione musica



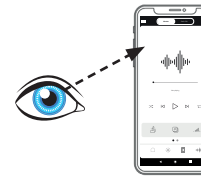
Radio FM avvia/arresta



Stazione avanti

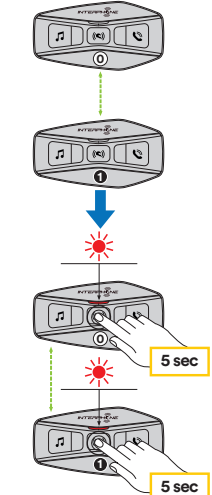


Stazione indietro

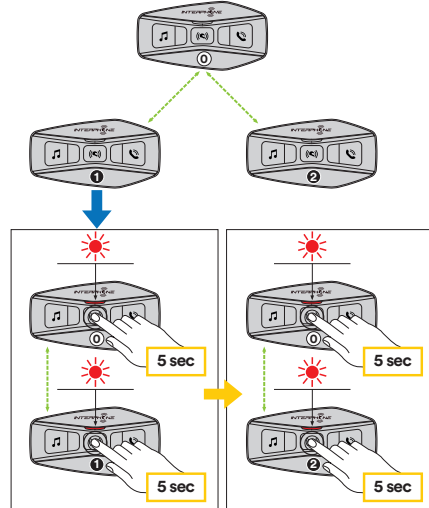


## Bluetooth® Intercom - abbinamento

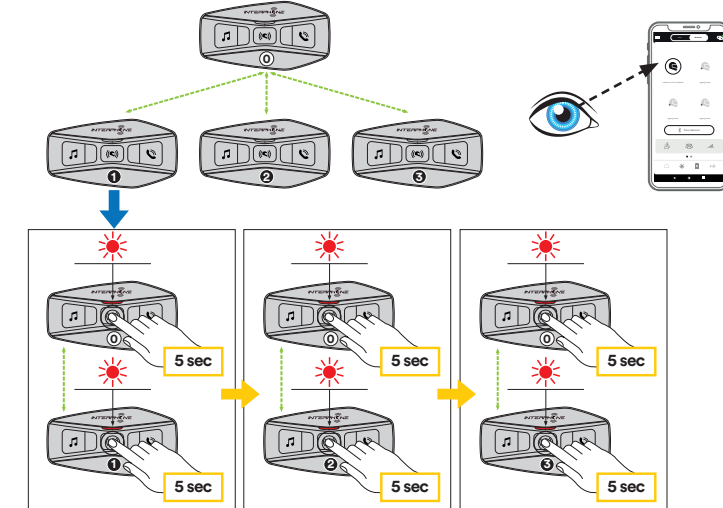
Abbinamento intercom a 2



Abbinamento intercom a 3

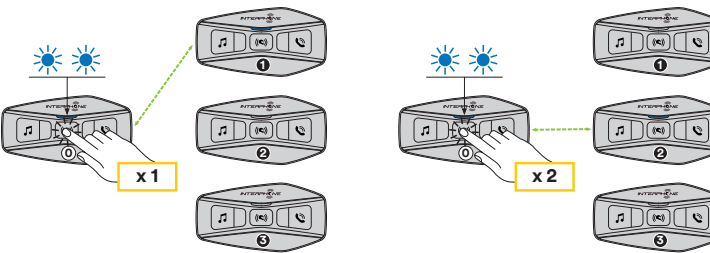


Abbinamento intercom a 4

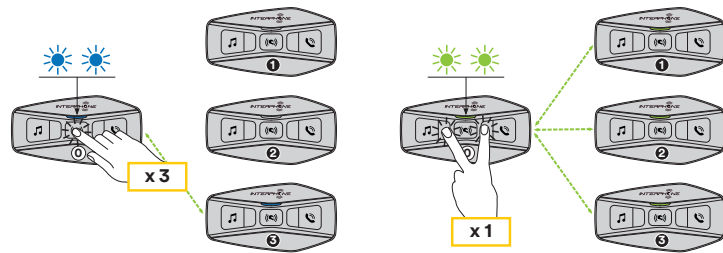


## Bluetooth® Intercom - conferenza

Conferenza Intercom

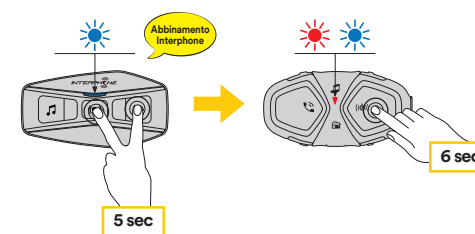


Conferenza Intercom di gruppo

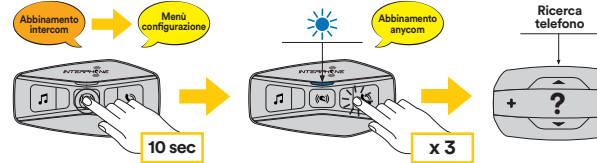


## Bluetooth® Intercom - altri abbinamenti

Abbinamento serie precedenti (da eseguire a centralina spenta)



Abbinamento Anycom altre marche (eccetto Sena)



## Configurazione

