

IN SEARCH OF INCREIBLE

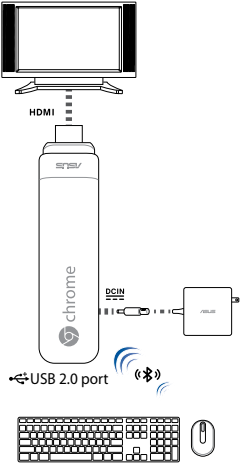
Quick Start Guide

دليل التشغيل السريع	빠른 시작 설명서
Кратко упу̀тване за бърз старт	Greitos darbo pradžios vadovas
Stručná príručka	Isa pamācība
Quick Start-vejledning	Hurtigstartsvejledning
Snelstartgids	Guia de consulta rápida
Lühijuhend	Instrukcja szybkiej instalacji
راهنمای شروع سریع	Краткое руководство
Guide de démarrage rapide	Ghid de pornire rapidă
Pikākāynnistysopas	Guia de início rápida
Schnellstarthilfe	Vodič za brzo korišćenje
Οδηγός γρήγορης έναρξης	Stručný návod na spustenie
Beüzemelési útmutató	Snabbstartsguide
Guida Rapida	ຄູ່ມືເລີ່ມຕົ້ນຢ່າງໄວ
Panduan Ringkas	Hızlı Başlatma Kılavuzu
クイックスタートガイド	Hồðúng dǎn khòuï ñoàng nhanh
Жылдам іске косу тұсқаулығы	

Are you using this device for Digital Signage? If so, go to google.com/work/chrome/signage/chromebit for more information.

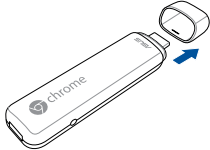


Getting started

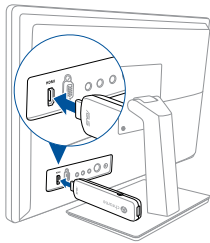


- NOTE:**
- For best performance, operate at 1°C (33.8°F) – 35°C (95°F)
 - Any peripheral over 500 mA current draw should be connected via a powered USB hub, and not directly to the USB port.
 - Ensure that your Chromebit does not block any of the air vents on your monitor display.
 - Place your Chromebit or powered USB hub near the side of your monitor to ensure that wireless signals are not obstructed.
 - Illustrations for reference only.
 - USB hub, keyboard and mouse are not included.
 - Visit our multi-language web site at <https://www.asus.com/support>

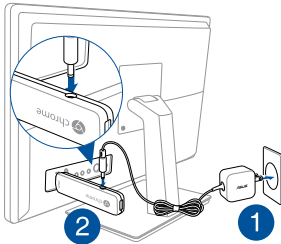
Connecting Chromebit



1. Remove the cap.

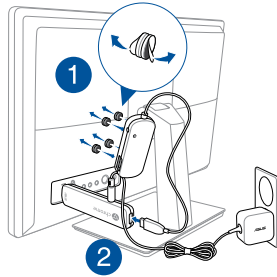


2. Plug your Chromebit into an HDMI port.

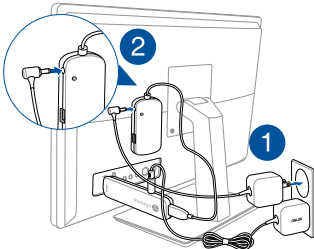


3. Connect the power into your Chromebit.

Connecting USB Hub

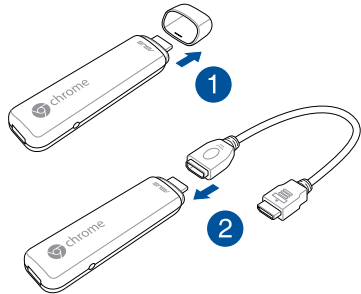


1. Stick your USB Hub to your monitor with the hook and loop sticker set, then connect your USB Hub into your Chromebit.

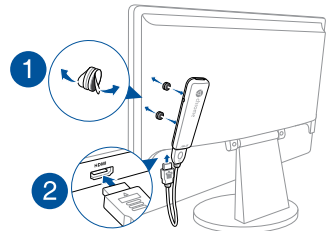


2. Connect the power into your USB Hub.

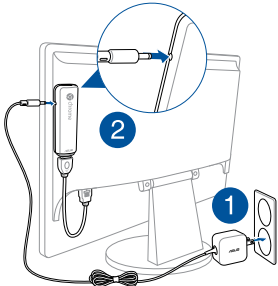
Connecting HDMI extension cable



1. Remove the cap, then connect your HDMI extension cable.



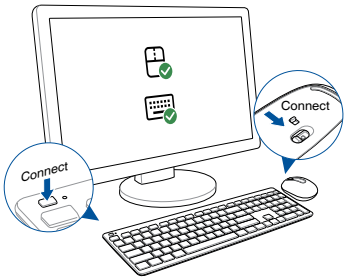
2. Stick your Chromebit to your monitor with the hook and loop sticker set, then plug your Chromebit into an HDMI port.



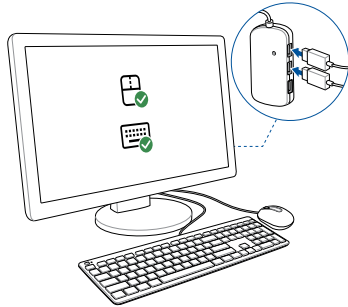
3. Connect the power into your Chromebit.

Connecting keyboard and mouse

Bluetooth keyboard and mouse



USB Hub with wired keyboard and mouse



Safety information

Your Chromebit is designed and tested to meet the latest standards of safety for information technology equipment. However, to ensure your safety, it is important that you read the following safety instructions.

Setting up your system

- Read and follow all instructions in the documentation before you operate your system.
- Do not use this product near water or a heated source.
- Make sure you leave plenty of space around the system for ventilation.
- Use this product in environments with ambient temperatures between 1°C (33.8°F) and 35°C (95°F).
- If you use an extension cord, make sure that the total ampere rating of the devices plugged into the extension cord does not exceed its ampere rating.
- If you notice any of the following conditions (or if you have other safety concerns), do not use your device: crackling, hissing, popping sound, or a strong odor or smoke coming from your device. It is normal for these conditions to appear when an internal electronic component fails in a safe and controlled manner. However, these conditions may also indicate a potential safety issue. Do not assume that it is a safe failure. Turn off your device. If your device is plugged in, disconnect it from its power source, and contact technical support for assistance.


- Magnet:** Avoid placing any media that contains magnets or is sensitive to magnetism, such as credit cards, bank cards, audio/video, tapes, or magnetic memory devices, near your device as you may lose information stored on that media and devices may be severely damaged. Media containing information sensitive to magnets should be kept at least 5 cm away from your device.
- Pacemakers and other implanted medical devices:** Chromebit receives and transmits using Wi-Fi and Bluetooth technology, which can interfere with pacemakers and other implanted medical devices. If you have a pacemaker or other implanted medical device, contact your physician or medical device manufacturer to make sure it's okay to use your Chromebit.

Care during use

- Do not walk on the power cord or allow anything to rest on it.
- Do not spill water or any other liquids on your system.
- When the system is turned off, a small amount of electrical current still flows. Always unplug the power cord from the power outlets before cleaning the system.
- If you encounter the following technical problems with the product, unplug the power cord and contact a qualified service technician or your retailer.
 - The power cord or plug is damaged.
 - Liquid has been spilled into the system.
 - The system does not function properly even if you follow the operating instructions.
 - The system was dropped or the casing is damaged.
 - The system performance changes.

NO DISASSEMBLY

The warranty does not apply to the products that have been disassembled by users



DO NOT throw the Chromebit in municipal waste. This product has been designed to enable proper reuse of parts and recycling. This symbol of the crossed out wheeled bin indicates that the product (electrical, electronic equipment, and mercury-containing button cell battery) should not be placed in municipal waste. Check local technical support services for product recycling.

Regulatory notices

REACH

Complying with the REACH (Registration, Evaluation, Authorization, and Restriction of Chemicals) regulatory framework, we publish the chemical substances in our products at ASUS REACH website at <http://csr.asus.com/english/REACH.htm>

ASUS Recycling/Takeback Services

ASUS recycling and takeback programs come from our commitment to the highest standards for protecting our environment. We believe in providing solutions for you to be able to responsibly recycle our products, batteries, other components, as well as the packaging materials. Please go to <http://csr.asus.com/english/Takeback.htm> for the detailed recycling information in different regions.

Coating Notice

IMPORTANT! To provide electrical insulation and maintain electrical safety, a coating is applied to insulate the device except on the areas where the I/O ports are located.

Federal Communications Commission Statement

This device complies with Part 15 of the FCC Rules. Operation is subject to the following two conditions:

- This device may not cause harmful interference, and
- This device must accept any interference received including interference that may cause undesired operation.

This equipment has been tested and found to comply with the limits for a Class B digital device, pursuant to Part 15 of the FCC Rules. These limits are designed to provide reasonable protection against harmful interference in a residential installation. This equipment generates, uses and can radiate radio frequency energy and, if not installed and used in accordance with manufacturer's instructions, may cause harmful interference to radio communications. However, there is no guarantee that interference will not occur in a particular installation. If this equipment does cause harmful interference to radio or television reception, which can be determined by turning the equipment off and on, the user is encouraged to try to correct the interference by one or more of the following measures:

- Reorient or relocate the receiving antenna.
- Increase the separation between the equipment and receiver.
- Connect the equipment to an outlet on a circuit different from that to which the receiver is connected.

- Consult the dealer or an experienced radio/TV technician for help.

CAUTION: This transmitter must not be co-located or operated in conjunction with any other antenna or transmitter. Any changes or modifications not expressly approved by the grantee of this device could void the user's authority to operate the equipment.

RF exposure warning

This equipment must be installed and operated in accordance with provided instructions and the antenna(s) used for this transmitter must be installed to provide a separation distance of at least 20 cm from all persons and must not be co-located or operating in conjunction with any other antenna or transmitter. End-users and installers must be provide with antenna installation instructions and transmitter operating conditions for satisfying RF exposure compliance.

IC Radiation Exposure Statement for Canada

This equipment complies with IC radiation exposure limits set forth for an uncontrolled environment. To maintain compliance with IC RF exposure compliance requirements, please avoid direct contact to the transmitting antenna during transmitting. End users must follow the specific operating instructions for satisfying RF exposure compliance.

Operation is subject to the following two conditions:

- This device may not cause interference and
- This device must accept any interference, including interference that may cause undesired operation of the device.

ICES-3(B)-NMB(3)(B)

User should also be advised that:

- (i) the device for operation in the band 5150-5250 MHz is only for indoor use to reduce the potential for harmful interference to co-channel mobile satellite systems;
- (ii) the maximum antenna gain permitted for devices in the bands 5250-5350 MHz and 5470-5725 MHz shall comply with the e.i.r.p. limit; and
- (iii) the maximum antenna gain permitted for devices in the band 5725-5825 MHz shall comply with the e.i.r.p. limits specified for point-to-point and non point-to-point operation as appropriate. High-power radars are allocated as primary users (i.e. priority users) of the bands 5250-5350 MHz and 5650-5850 MHz and that these radars could cause interference and/or damage to LE-LAN devices.

Wireless Operation Channel for Different Domains

N. America	2.412-2.462 GHz	Ch01 through CH11
Japan	2.412-2.484 GHz	Ch01 through Ch14
Europe ETSI	2.412-2.472 GHz	Ch01 through Ch13

Regional notice for Singapore

Complies with IDA Standards DB103778

This ASUS product complies with IDA Standards.

HDMI Compliance Statement

The terms HDMI, HDMI High-Definition Multimedia Interface, and the HDMI Logo are trademarks or registered trademarks of HDMI Licensing Administrator, Inc.

ASUS Contact Information

ASUSTeK COMPUTER INC.

Address	1F., No. 15, Lide Rd., Beitou Dist., Taipei City 112, Taiwan
Telephone	+886-2-2894-3447
Fax	+886-2-2890-7798
Website	http://www.asus.com
Technical Support	
Telephone	+86-21-38429911
Online support	http://qr.asus.com/techserv


ASUS COMPUTER INTERNATIONAL (America)

Address	48720 Kato Rd., Fremont, CA 94538, USA
Telephone	+1-510-739-3777
Fax	+1-510-608-4555
Website	http://www.asus.com/us/
Technical Support	
Support fax	+1-812-284-0883
General support	+1-812-282-4555
Online support	http://qr.asus.com/techserv

ASUS COMPUTER GmbH (Germany and Austria)

Address	Harkortstrasse 21-23, 40880 Ratingen, Germany
Website	http://www.asus.com/de
Online contact	https://www.asus.com/support/Product/ContactUs/Services/questionform/?lang=de-de
Technical Support	
Telephone (DE)	+49-2102-5789557
Telephone (AT)	+43-1360-2775461
Online support	https://www.asus.com/de/support

FCC COMPLIANCE INFORMATION
Per FCC Part 2 Section 2.1077



Responsible Party:	Asus Computer International
Address:	48720 Kato Rd, Fremont, CA 94538
Phone/Fax No:	(510)739-3777/(510)608-4555

hereby declares that the product

Product Name :	Chromebit
Model Number :	CS10

compliance statement:

This device complies with part 15 of the FCC Rules. Operation is subject to the following two conditions: (1) This device may not cause harmful interference, and (2) this device must accept any interference received, including interference that may cause undesired operation.

Ver. 080201