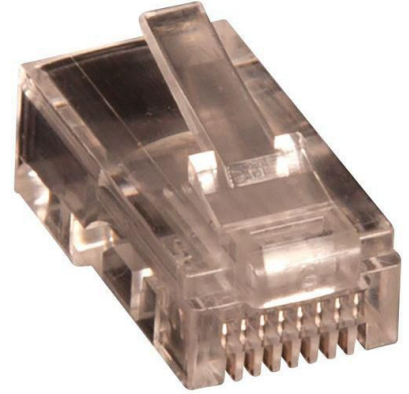


MPN: LVN125432

## RJ45 UTP plug Cat5e for AWG 24-26 solid conductor 10pcs.

Used for mounting on shielded Cat5e patch the connector increase the performance, as the cables twisting goes all the way though the connector.

- Inner Wire Diameter Range = 0.9~1.05MM
- Diameter Range for Cable = 5.5~6.3MM
- 10 pcs in the Box



### Specifications

<b>Features</b>	<b>AWG wire size</b>	24/26
	<b>Cable shielding</b>	U/UTP (UTP)
	<b>Cable standard</b>	Cat5e
	<b>Connector form factor</b>	Straight
	<b>Connector gender</b>	Male
	<b>Connector(s)</b>	RJ45
	<b>Product colour</b>	Transparent
<b>Packaging content</b>	<b>Quantity per pack</b>	10 pc(s)
<b>Vendor information</b>	<b>Brand Name</b>	Lanview
	<b>Warranty</b>	25 Year(s)
<b>Weight &amp; dimensions</b>	<b>Outer diameter</b>	6.3 mm