



Philips Performance Series
4K UHD LED Android TV

3 sided Ambilight TV

Major HDR formats supported
P5 Perfect Picture Engine
108 cm (43") Android TV



43PUS8556

The one to watch

4K UHD LED Android TV with Ambilight

Choosing your next TV just got easy. When you're looking for superb picture and sound, easy connectivity and responsive, hassle-free gaming—you're looking for The One. Plus you get Ambilight for an immersive experience like no other.

Slim TV. Beautiful light.

- The one with a vibrant HDR picture. Philips 4K UHD TV.
- The one with magical Ambilight. Only from Philips.
- Slim, attractive design
- Metal bezel. Central swivel stand.

Smooth motion. Real colour. Incredible depth.

- Whatever the source, always perfection. Philips P5 engine.
- Major HDR formats. See more of what the director intended.
- Cinematic vision and sound. Dolby Vision and Dolby Atmos
- The one for gamers. Low latency on any console.

Content at your command.

- The one that's simply smart. Android TV
- The one for multi-room audio. DTS Play-Fi compatible
- Voice control. The Google Assistant. Works with Alexa.
- Easy text input. Remote control with QWERTY keyboard.

PHILIPS

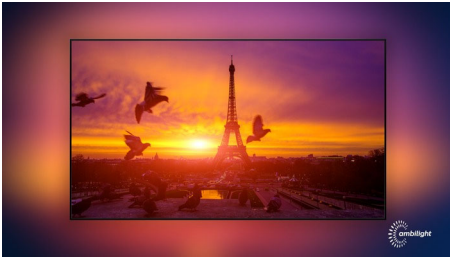
4K UHD LED Android TV

3 sided Ambilight TV Major HDR formats supported, P5 Perfect Picture Engine, 108 cm (43") Android TV

43PUS8556/12

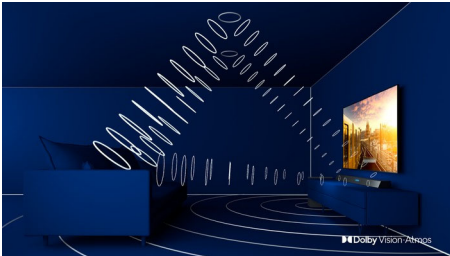
Highlights

3 sided Ambilight



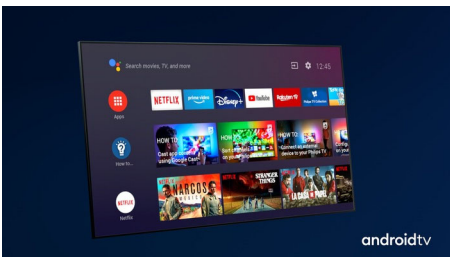
With Philips Ambilight, every moment feels closer. Intelligent LEDs around the edge of the TV respond to the on-screen action and emit an immersive glow that's simply captivating. Experience it once and wonder how you enjoy TV without it.

Dolby Vision + Dolby Atmos



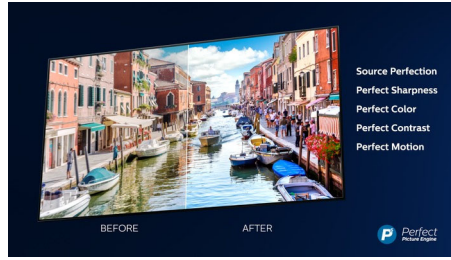
Support for Dolby's premium sound and video formats means that the HDR content that you watch will look—and sound—glorious. You'll enjoy a picture that reflects the director's original intentions and experience spacious sound with real clarity and depth.

Android TV



Your Philips Android TV gives you the content you want—when you want it. You can customise the home screen to display your favourite apps, making it simple to start streaming the movies and shows you love. Or pick up where you left off.

Philips P5 Picture Engine



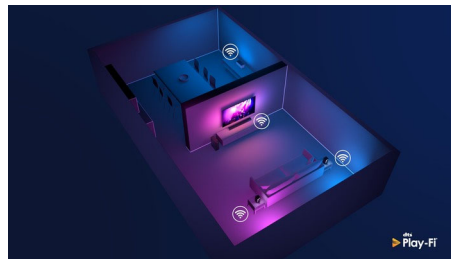
The Philips P5 engine delivers a picture as brilliant as the content you love. Details have noticeably more depth. Colours are vivid, while skin tones look natural. Contrast is so crisp you'll feel every detail. Motion is perfectly smooth.

Vibrant HDR picture



Your Philips 4K UHD TV is compatible with all major HDR formats, including Dolby Vision. Whether it's a must-watch series or the latest video game, shadows will be deeper. Bright surfaces will shine. Colours will be truer.

DTS Play-Fi compatible



With DTS Play-Fi on your Philips TV you can connect to compatible speakers in any room. Got wireless speakers in the kitchen? Listen to the film while you make a snack, or keep up with the sports commentary while you get everyone drinks.

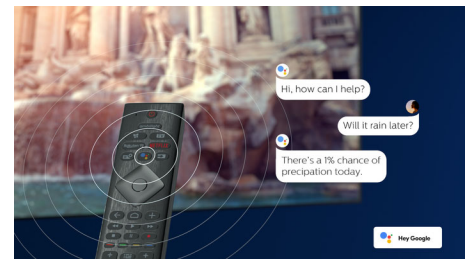
HDMI 2.1 VRR and low latency



Ready for gaming

Your Philips TV boasts the latest HDMI 2.1 connectivity, and the TV automatically switches to a low latency setting when you start playing a game on your console. VRR is supported for smooth fast-action gameplay. Ambilight's gaming mode brings the thrill right into the room.

AI voice control



Push a button on the remote to talk to the Google Assistant. Control the TV or Google Assistant-compatible smart home devices with your voice. Or ask Alexa to control the TV via Alexa-enabled devices.

Remote with QWERTY keyboard

Your TV's remote control has a full QWERTY-based keyboard integrated into its rear side, making text input a whole lot quicker. Typing passwords for your streaming accounts, searching for content and entering web addresses has never been easier.

Slim, attractive design

Looking for a TV that fits with your room? The virtually bezel-free screen of this 4K smart TV goes with just about any interior. The slim feet make it seem as if the screen is floating above your TV unit and you can widen the feet to accommodate longer soundbars.



Dolby Vision Atmos

androidtv



Specifications

Ambilight

- Ambilight Version: 3 sided
- Ambilight Features: Built-in Ambilight+hue, Ambilight Music, Game Mode, Wall colour adaptive, Lounge mode, AmbiWakeup, AmbiSleep, Philips Wireless Home Speakers

Picture/Display

- Display: 4K Ultra HD LED
- Diagonal screen size: 43 inch / 108 cm
- Panel resolution: 3840 x 2160
- Aspect ratio: 16:9
- Pixel engine: P5 Perfect Picture Engine
- Picture enhancement: Ultra Resolution, Dolby Vision, HDR10+, Micro Dimming Pro, ISF Colour Management

Supported Display Resolution

- Computer inputs on all HDMI: HDR supported, HDR10/HLG, up to 4K UHD 3840 x 2160 @60 Hz, HDR supported, HDR10+/HLG
- Video inputs on all HDMI: up to 4K UHD 3840 x 2160 @60 Hz, HDR supported, HDR10/HLG (Hybrid Log Gamma), HDR10+/Dolby Vision

Android TV

- OS: Android TV™ 10 (Q)
- Pre-installed apps: Google Play Movies*, Google Play Music*, Google Search, YouTube, Netflix, Amazon instant video, BBC iPlayer, Amazon Prime Video, Disney+, Fitness App, Spotify
- Memory size (Flash): 16 GB*

Smart TV Features

- Interactive TV: HbbTV
- Programme: Pause TV, USB recording*
- Ease of Installation: Auto detect Philips devices, Device connection wizard, Network installation wizard, Settings assistant wizard
- Ease of Use: One-stop smart menu button, On-screen user manual
- Firmware upgradeable: Firmware auto upgrade wizard, Firmware upgradeable via USB, Online firmware upgrade, FW download in background
- Screen Format Adjustments: Basic - Fill Screen, Fit to screen, Advance - Shift, Zoom, stretch, Wide screen
- Remote Control: with Voice
- User Interaction: SimplyShare
- Voice assistant*: Google Assistant built in, RC with Mic., Works with Alexa

Processing

- Processing Power: Quad Core

Tuner/Reception/Transmission

- HEVC support
- Digital TV: DVB-T/T2/T2-HD/C/S/S2
- MPEG Support: MPEG2, MPEG4

- Video Playback: PAL, SECAM
- TV Programme guide*: 8-day Electronic Programme Guide
- Signal strength indication
- Teletext: 1000 page Hypertext

Connectivity

- Number of HDMI connections: 4
- Number of USBs: 2
- Wireless connections: Wi-Fi 802.11ac, 2 x 2, Dual band, Bluetooth 5.0
- Other connections: Satellite Connector, Common Interface Plus (CI+), Digital audio out (optical), Ethernet-LAN RJ-45, Headphone out, Service connector
- HDMI features: 4K, Audio Return Channel
- EasyLink (HDMI-CEC): Remote control pass-through, System audio control, System standby, One touch play
- HDCP 2.3: Yes on all HDMI
- HDMI ARC: Yes for all ports
- HDMI eARC: Yes on HDMI2
- HDMI VRR: Yes on HDMI1 and HDMI2

Multimedia Applications

- Video Playback Formats: Containers: AVI, MKV, H264/MPEG-4 AVC, MPEG-1, MPEG-2, MPEG-4, VP9, HEVC (H.265), AV1, HEVC
- Subtitles Formats Support: .SRT, .SUB, .TXT, .SMI
- Music Playback Formats: AAC, MP3, WAV, WMA (v2 up to v9.2), WMA-PRO (v9 and v10)
- Picture Playback Formats: JPEG, BMP, GIF, PNG, 360 photo, HEIF

Power

- Mains power: AC 220 - 240 V 50/60 Hz
- Standby power consumption: <0.3 W
- Ambient temperature: 5°C to 35°C
- Power Saving Features: Auto switch-off timer, Light sensor, Picture mute (for radio), Eco mode
- Mercury content: 0 mg
- Presence of lead: Yes*

EU Energy card

- EPREL registration numbers: 441331
- Diagonal screen size (inch): 43
- Diagonal screen size (metric): 108
- Energy class for SDR: G
- On mode power demand for SDR: 62 kW h
- Energy class for HDR: G
- On mode power demand for HDR: 104 kW h
- Networked standby mode: <2.0 W
- Off mode power consumption: n.a.
- Panel technology used: LED LCD

Sound

- Output power (RMS): 20 W
- Sound Enhancement: Dolby Atmos®, A.I. Sound, Clear Dialogue, Night mode, A.I. EQ, Dolby Bass Enhancement,

- Dolby Volume Leveller, DTS Play-Fi, Mimi Sound Personalisation
- Speaker configuration: 2 x 10 W full-range speaker

Dimensions

- VESA wall mount compatible: 100 x 200 mm
- Box dimensions (W x H x D): 1070.0 x 680.0 x 150.0 mm
- Product weight: 9.1 kg
- Product weight (+stand): 11.4 kg
- Set dimensions (W x H x D): 962.8 x 558.2 x 78.1 mm
- Set dimensions with stand (W x H x D): 962.8 x 628.2 x 201.1 mm
- Stand dimensions (W x H x D): 590.0 x 70.0 x 201.1 mm
- Weight incl. Packaging: 14.0 kg

Design

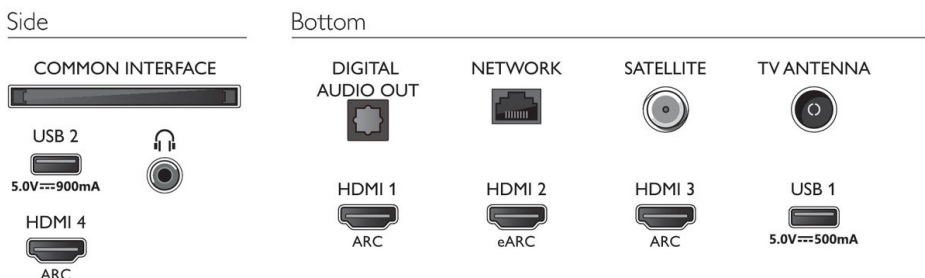
- Colours of TV: Anthracite grey bezel
- Stand design: Swivel +/- 15 degree, Anthracite grey stand

Accessories

- Included accessories: Quick start guide, Legal and safety brochure, Power cord, Tabletop stand, Remote Control with QWERTY
- Included batteries: 2 x AAA Batteries



Connections



Issue date 2021-06-07

Version: 7.3.1

12 NC: 8670 001 74943
EAN: 87 18863 02873 5

© 2021 Koninklijke Philips N.V.
All Rights reserved.

Specifications are subject to change without notice.
Trademarks are the property of Koninklijke Philips N.V. or their respective owners.

www.philips.com

* EPG and actual visibility (up to 8 days) is country- and operator-dependent.
* Android App offerings vary per country. For more details please visit your local Google Play Store.
* Energy consumption in kWh per year based on the power consumption of the television operating 4 hours per day for 365 days. The actual energy consumption will depend on how the television is used.
* The TV supports DVB reception for 'Free to air' broadcast. Specific DVB operators may not be supported. An up to date list can be found in the FAQ section of the Philips support website. For some operators Conditional Access and subscription are required. Contact your operator for more information.
* Philips TV Remote app and related functionalities vary per TV model, operator and country, as well as smart device model and OS. For more details please visit: www.philips.com/TVRemoteapp.
* Smart TV app availability varies per TV model and country. For more details please visit: www.philips.com/smarttv.
* USB recording for digital channels only, recordings may be limited by broadcast copy protection (CI+). Country and channel restrictions may apply.
* This television contains lead only in certain parts or components where no technology alternatives exist in accordance with existing exemption clauses under the RoHS Directive.
* *Memory size (Flash): 16 GB (the actual available disk space may differ depending on e.g. (pre-)installed apps, installed operating system etc.)
* Google Assistant is available on Philips Android TVs running on Android O (8) or higher OS version. Google Assistant is available in selected languages and countries.
* Amazon Prime is available in selected languages and countries.
* Amazon, Alexa and all related logos are trademarks of Amazon.com, Inc. or its affiliates. Amazon Alexa is available in selected languages and countries.
* Netflix subscription required. Subject to terms on <https://www.netflix.com>
* Disney+ subscription required. Subject to terms at <https://www.disneyplus.com> (c) 2020 Disney and its related entities. Disney+ is available in selected languages and countries.
* Rakuten TV is available in selected languages and countries.