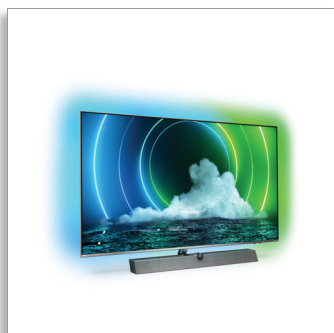




Philips 9600 series
4K UHD MiniLED Android
TV

P5 AI perfect picture engine

Bowers & Wilkins sound
4 sided Ambilight TV
164 cm (65") Android TV



65PML9636

Big on colour. Big on sound. Big on lifelike.

4K UHD MiniLED TV

Vibrant colours. Vibrant sound. From movies to games, this MiniLED TV invites you to dive into the brilliance of the content you love. Get lost in the lifelike picture, immersive Bowers & Wilkins sound and magical 4 sided Ambilight.

Big. Bright. Beautiful.

- Big-screen brilliance. Mini LED TV.
- All-round immersion. 4 sided Ambilight.
- Premium-quality materials. From stand to remote.
- Immersive sound. Bowers & Wilkins meets Dolby Atmos.

Smooth motion. True colour. Incredible depth.

- Whatever you watch, a picture so real. P5 engine with AI.
- Vibrant HDR picture. Philips 4K UHD TV.
- Cinematic vision and sound. Dolby Vision and Dolby Atmos
- Great for gaming. Ultra-low latency on any console

Content at your command.

- Simply smart. Android TV.
- Multi-room audio. DTS Play-Fi
- Voice control. The Google Assistant. Works with Alexa.

PHILIPS

4K UHD MiniLED Android TV
P5 AI perfect picture engine Bowers & Wilkins sound, 4 sided Ambilight TV, 164 cm (65") Android TV

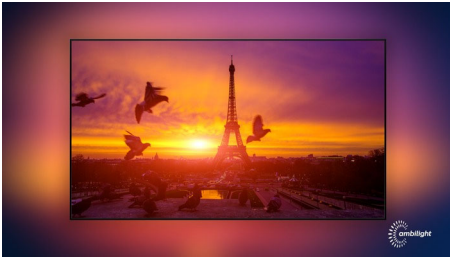
65PML9636/12

Highlights

Bowers & Wilkins sound

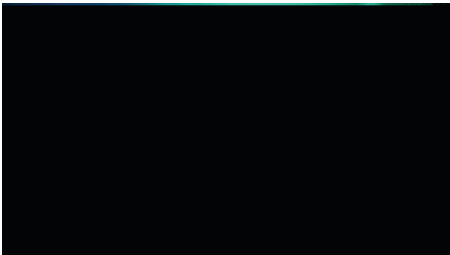
An exclusive speaker design by legendary audio engineers Bowers & Wilkins delivers thrillingly lifelike performance. Up-firing speakers let you get the most out of Dolby Atmos. A central tweeter keeps the dialogue pristine no matter how intense the drama gets.

4 sided Ambilight



With Philips 4 sided Ambilight, every moment feels closer. Intelligent LEDs around the edge of the TV respond to the on-screen action and emit an immersive glow that's simply captivating. Experience it once and wonder how you enjoyed TV without it.

Mini LED TV

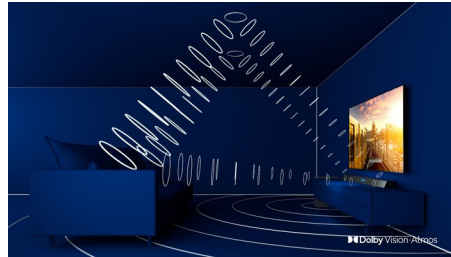


Your Philips Mini LED TV supports all major HDR formats and gives you a truly impressive big-screen picture with deep blacks and lifelike colours. Over a thousand intelligent backlight zones are independently dimmed or brightened to enable pin-sharp contrast and real depth.

P5 engine with AI

Philips P5 processor with AI delivers a picture so real it feels like you could step right into it. A deep-learning AI algorithm processes images in a manner similar to the human brain. No matter what you're watching, you get lifelike detail and contrast, rich colour and smooth motion.

Dolby Vision + Dolby Atmos



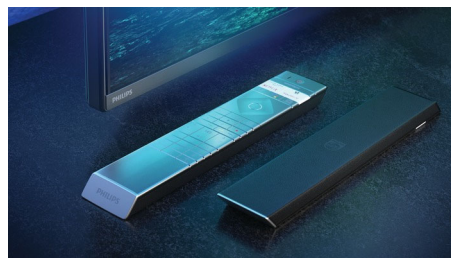
Support for Dolby's premium sound and video formats means that the HDR content that you watch will look—and sound—glorious. You'll enjoy a picture that reflects the director's original intentions and experience spacious sound with real clarity and depth.

HDMI 2.1 VRR and low latency



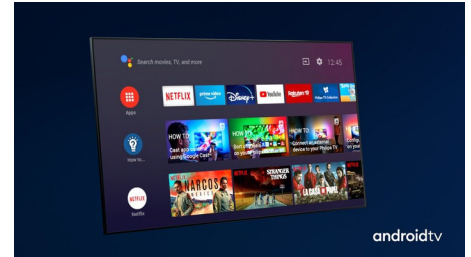
Your Philips TV boasts the latest HDMI 2.1 connectivity and automatically switches to an ultra-low-latency setting when you start playing a game on your console. VRR and Freesync are supported for smooth fast-action gameplay. Ambilight's gaming mode brings the thrill right into the room.

Premium materials



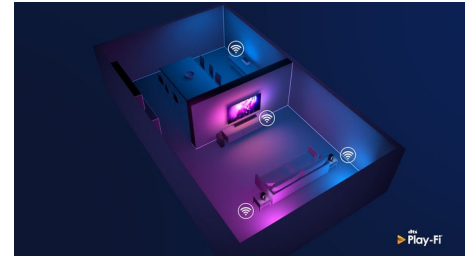
Every inch of this TV looks and feels premium. The brushed and polished silver metal bezel. The angled sound enclosure clad in Kvadrat speaker fabric. The soft, textured leather-backed remote. Why settle for anything less?

Simply smart. Android TV



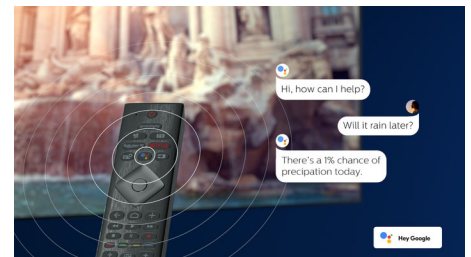
Your Philips Android TV gives you the content you want—when you want it. You can customise the home screen to display your favourite apps, making it simple to start streaming the movies and shows you love. Or pick up where you left off.

DTS Play-Fi compatible



With DTS Play-Fi on your Philips TV you can connect to compatible speakers in any room. Got wireless speakers in the kitchen? Listen to the film while you make a snack or keep up with the sports commentary while you get everyone drinks.

AI voice control



Push a button on the remote to talk to the Google Assistant. Control the TV or Google Assistant-compatible smart home devices with your voice. Or ask Alexa to control the TV via Alexa-enabled devices.

4K UHD MiniLED Android TV
P5 AI perfect picture engine Bowers & Wilkins sound, 4 sided Ambilight TV, 164 cm (65") Android TV

65PML9636/12

Specifications

Ambilight

- Ambilight Version: 4 sided
- Ambilight Features: Built-in Ambilight+hue, Ambilight Music, Game Mode, Wall colour adaptive, Lounge mode, AmbiWakeup, AmbiSleep, Philips Wireless Home Speakers

Picture/Display

- Diagonal screen size: 65 inch / 164 cm
- Display: 4K Ultra HD LED
- Panel resolution: 3840 x 2160
- Aspect ratio: 16:9
- Pixel engine: P5 AI Perfect Picture Engine
- Picture enhancement: Ultra Resolution, Dolby Vision, HDR10+, Wide Colour Gamut 95% DCI/P3, A.I. PQ mode, CalMAN Ready, ISF Colour Management, Micro Dimming Premium, Perfect Natural Motion

Supported Display Resolution

- Computer inputs on all HDMI: HDR supported, HDR10/HLG, HDR supported, HDR10+/HLG, up to 4K UHD 3840 x 2160@120Hz
- Video inputs on all HDMI: HDR10/HLG (Hybrid Log Gamma), HDR10+/Dolby Vision, up to 4K UHD 3840 x 2160@120Hz

Android TV

- OS: Android TV™ 10 (Q)
- Pre-installed apps: Google Play Movies*, Google Play Music*, Google Search, YouTube, Amazon instant video, BBC iPlayer, Netflix, Amazon Prime Video, Disney+, Fitness App, Spotify
- Memory size (Flash): 16 GB*

Smart TV Features

- Interactive TV: HbbTV
- Programme: Pause TV, USB recording*
- Ease of Installation: Auto detect Philips devices, Device connection wizard, Network installation wizard, Settings assistant wizard
- Ease of Use: One-stop smart menu button, On-screen user manual
- Firmware upgradeable: Firmware auto upgrade wizard, Firmware upgradeable via USB, Online firmware upgrade, FW download in background
- Screen Format Adjustments: Basic - Fill Screen, Fit to screen, Advance - Shift, Zoom, stretch, Wide screen
- Remote Control: with Voice, with Key light, with Muirhead leather
- User Interaction: SimplyShare
- Voice assistant*: Google Assistant built in, RC with Mic., Works with Alexa

Processing

- Processing Power: Quad Core

Tuner/Reception/Transmission

- HEVC support

- Digital TV: DVB-T/T2/T2-HD/C/S/S2
- MPEG Support: MPEG2, MPEG4
- Video Playback: PAL, SECAM
- TV Programme guide*: 8-day Electronic Programme Guide
- Signal strength indication
- Teletext: 1000 page Hypertext

Connectivity

- Number of HDMI connections: 4
- Number of USBs: 2
- Wireless connections: Wi-Fi 802.11ac, 2 x 2, Dual band, Bluetooth 5.0
- Other connections: Common Interface Plus (CI+), Digital audio out (optical), Satellite Connector, Ethernet-LAN RJ-45, Headphone out, Service connector
- HDMI features: 4K, Audio Return Channel
- EasyLink (HDMI-CEC): Remote control pass-through, System audio control, System standby, One touch play
- HDCP 2.3: Yes on all HDMI
- HDMI ARC: Yes for all ports
- HDMI eARC: Yes on HDMI2
- HDMI VRR: FreeSync Premium Pro, Yes on all HDMI ports

Multimedia Applications

- Video Playback Formats: Containers: AVI, MKV, H264/MPEG-4 AVC, MPEG-1, MPEG-2, MPEG-4, HEVC (H.265), VP9, AV1
- Subtitles Formats Support: .SRT, .SUB, .TXT, .SMI
- Music Playback Formats: AAC, MP3, WAV, WMA (v2 up to v9.2), WMA-PRO (v9 and v10)
- Picture Playback Formats: JPEG, BMP, GIF, PNG, 360 photo, HEIF

Power

- Mains power: AC 220 - 240 V 50/60 Hz
- Ambient temperature: 5°C to 35°C
- Standby power consumption: <0.3 W
- Power Saving Features: Auto switch-off timer, Light sensor, Picture mute (for radio), Eco mode
- Presence of lead: Yes*
- Mercury content: 0 mg

EU Energy card

- Diagonal screen size (inch): 65
- Diagonal screen size (metric): 164
- Energy class for SDR: n.a.
- Energy class for HDR: n.a.
- Networked standby mode: <2.0 W
- Off mode power consumption: n.a.
- Panel technology used: LED LCD

Sound

- Sound Enhancement: A.I. Sound, Clear Dialogue, Dolby Bass Enhancement, Dolby Volume Leveller, Night mode, Dolby Atmos®, A.I. EQ, DTS Play-Fi
- Speaker configuration: 10 W x 2 mid speaker, 12.5 W x 2 high speaker, 20 W woofer
- Audio: Sound by Bowers & Wilkins, 3.1.2 Channel, Output

- power: 70 Watt (RMS)
- Codec: AC-4, Dolby Atmos®, Dolby Digital MS12 V2.3, DTS-HD(M6)

Dimensions

- Box dimensions (W x H x D): 1600.0 x 1081.0 x 180.0 mm
- Product weight: 28.0 kg
- Product weight (+stand): 35.7 kg
- Set dimensions (W x H x D): 1449.0 x 830.5 x 76.4 mm
- Set dimensions with stand (W x H x D): 1449.0 x 930.2 x 286.2 mm
- Stand dimensions (W x H x D): 880.0 x 87.5/100.0 x 286.2 mm
- Weight incl. Packaging: 45.9 kg
- VESA wall mount compatible: 400 x 200 mm

Design

- Colours of TV: Mid silver metal bezel
- Stand design: Dark chrome sound solution

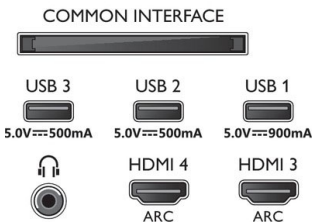
Accessories

- Included Accessories: Legal and safety brochure, Power cord, Quick start guide (x 1), Remote Control, 2 x AAA Batteries, Stand with sound solution



Connections

Side



Bottom



Issue date 2021-07-26

Version: 4.3.1

12 NC: 8670 001 74974
EAN: 87 18863 02888 9

© 2021 Koninklijke Philips N.V.
All Rights reserved.

Specifications are subject to change without notice.
Trademarks are the property of Koninklijke Philips N.V.
or their respective owners.

www.philips.com

* Android App offerings vary per country. For more details please visit your local Google Play Store.

* Energy consumption in kWh per year based on the power consumption of the television operating 4 hours per day for 365 days. The actual energy consumption will depend on how the television is used.

* The TV supports DVB reception for 'Free to air' broadcast. Specific DVB operators may not be supported. An up to date list can be found in the FAQ section of the Philips support website. For some operators Conditional Access and subscription are required. Contact your operator for more information.

* Philips TV Remote app and related functionalities vary per TV model, operator and country, as well as smart device model and OS. For more details please visit: www.philips.com/TVRemoteapp.

* Smart TV app availability varies per TV model and country. For more details please visit: www.philips.com/smarttv.

* USB recording for digital channels only, recordings may be limited by broadcast copy protection (CI+). Country and channel restrictions may apply.

* This television contains lead only in certain parts or components where no technology alternatives exist in accordance with existing exemption clauses under the RoHS Directive.

* *Memory size (Flash): 16 GB (the actual available disk space may differ depending on e.g. (pre-)installed apps, installed operating system etc.)

* HDMI connection is required for soundbar, speaker and other audio device.

* Amazon Prime is available in selected languages and countries.

* Google Assistant is available on Philips Android TVs running on Android O (8) or higher OS version. Google Assistant is available in selected languages and countries.

* Netflix subscription required. Subject to terms on <https://www.netflix.com>

* Disney+ subscription required. Subject to terms at <https://www.disneyplus.com> (c) 2020 Disney and its related entities.

* Disney+ is available in selected languages and countries.

* Rakuten TV is available in selected languages and countries.

* EPG and actual visibility (up to 8 days) is country- and operator-dependent.

* Amazon, Alexa and all related logos are trademarks of Amazon.com, Inc. or its affiliates. Amazon Alexa is available in selected languages and countries.

* Cloud Gaming offering depends on game providers.