

Third-party add-on installation for Windows Embedded Operating System

Deployment Guide



Notes, cautions, and warnings

 **NOTE:** A NOTE indicates important information that helps you make better use of your product.

 **CAUTION:** A CAUTION indicates either potential damage to hardware or loss of data and tells you how to avoid the problem.

 **WARNING:** A WARNING indicates a potential for property damage, personal injury, or death.

Contents

| | |
|---|-----------|
| Chapter 1: Introduction | 4 |
| Chapter 2: Add-on creation for VMware Horizon Client packages..... | 5 |
| Chapter 3: Add-on creation for VMware Carbon Black Sensor packages..... | 12 |
| Chapter 4: Add-on creation and customization for Citrix Workspace packages..... | 18 |
| Chapter 5: Add-on creation for Amazon WorkSpaces client packages | 26 |
| Chapter 6: Configure group policy settings to disable automatic updates for Amazon WorkSpaces clients..... | 34 |
| Chapter 7: Add-on creation for Windows Desktop client packages | 35 |
| Chapter 8: VMware Workspace ONE..... | 43 |
| Chapter 9: Windows Autopilot..... | 44 |
| Chapter 10: Install add-on package using Wyse Management Suite..... | 45 |
| Chapter 11: Contacting Dell..... | 46 |

Introduction

DISCLAIMER: The information contained in this document is general purpose information only. Dell assumes no responsibility for errors or omissions in the contents. In no event shall Dell be liable for any special, direct, indirect consequential or incidental damages or any damages whatsoever. Dell reserves the right to make additions, deletions or modification to the content at any time without prior notice.

This document contains links to external websites that are not provided or maintained by or in any way affiliated with Dell. We do not guarantee the accuracy, relevance, timeliness or completeness of the information on these external websites.

This document helps users get early access to latest third party applications. The packages(add-ons) created by users by following the instructions are not supported by Dell. Dell is not responsible or liable in any manner for any damage occurring due to the software. Dell will assist customers in installing third-party add-ons, and provide OS support. Any other support or functionality inquiries may need to be shared with the third-party software vendor. Dell may not assist customers in updating or modifying the third-party add-ons.

This guide provides information about creating and deploying third-party applications such as Citrix Workspace App, VMware Horizon Client, VMware Carbon Black Sensor, Amazon WorkSpaces client packages, and Windows Desktop client packages using Wyse Management Suite 1.2 and later versions.

It also provides information about the applications that can be used on your thin client to manage and configure devices, such as Windows Autopilot and VMware Workspace ONE.

Supported platforms

The following table contains the list of supported platforms:

Table 1. Supported platforms

| Operating System | Platform |
|-------------------------------------|--|
| Windows 10 IoT Enterprise 2016 LTSC | <ul style="list-style-type: none"> ● Wyse 5070 thin client ● Wyse 5470 thin client ● Wyse 5470 All-in-one thin client ● Wyse 5070 Extended thin client |
| Windows 10 IoT Enterprise 2019 LTSC | <ul style="list-style-type: none"> ● Wyse 5070 thin client ● Wyse 5070 Extended thin client |

Add-on creation for VMware Horizon Client packages

Prerequisites

Before installing the package, ensure that Write Filter is disabled. If Write Filter is not disabled, it fills the Unified Write Filter Overlay and the updates made are not persistent across reboot.

Steps

1. Download the VMware Horizon Client package from https://my.vmware.com/web/vmware/info/slug/desktop_end_user_computing/vmware_horizon_clients/.
2. Create a folder named C:\Temp\VMware on your thin client.
3. Copy the following text on a notepad and save the file as HKLM.reg:

```
Windows Registry Editor Version 5.00

[HKEY_LOCAL_MACHINE\SOFTWARE\WOW6432Node\ThinPrint\TPView]
"DebugFile"="C:\\Windows\\Temp\\

[HKEY_LOCAL_MACHINE\SOFTWARE\Microsoft\Windows\CurrentVersion\Run]
"pnusbclitray"=-
```

NOTE: Edit the file to customize the VMware registry.

4. Copy the following text on a notepad and save the file as ExecuteVMWare.bat:

```
REM For installing VMWare horizon client
cd C:\Temp\ .\VMware-Horizon-Client-5.3.0-15208953.exe /rcu /silent /quiet /
AutoUpdateCheck=disabled

REM For Remerges with respect to HKLM
regedit /s C:\Temp\HKLM.reg
```

For more information about latest updates and examples, see the respective VMware Horizon Client release notes.

NOTE: Auto updates are disabled as part of the installation parameter. You should add the silent installation parameter, **/Silent** if the package needs to be installed in a remote environment.

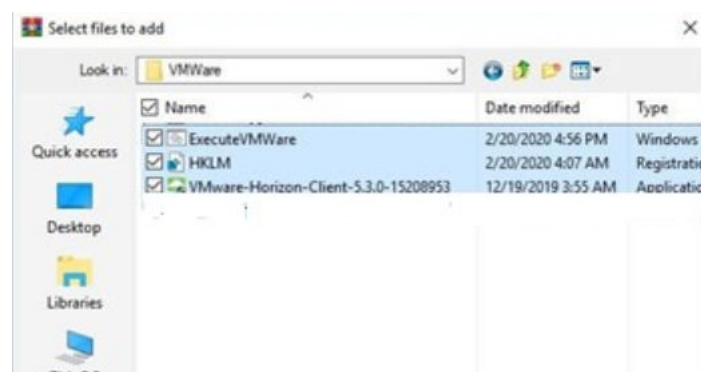


Figure 1. Package Structure

5. Create a self extractor package using the following steps:

- a. Right-click the VMware folder and select **Add to archive**.
- b. In the **General** tab, click **Create SFX archive**.

NOTE: You can use WinRAR or any available application to create an **SFX** archive.

| <input type="checkbox"/> | Name | Date modified | Type | Size |
|-------------------------------------|--------|-------------------|-------------|------|
| <input checked="" type="checkbox"/> | VMWare | 2/20/2020 4:56 PM | File folder | |

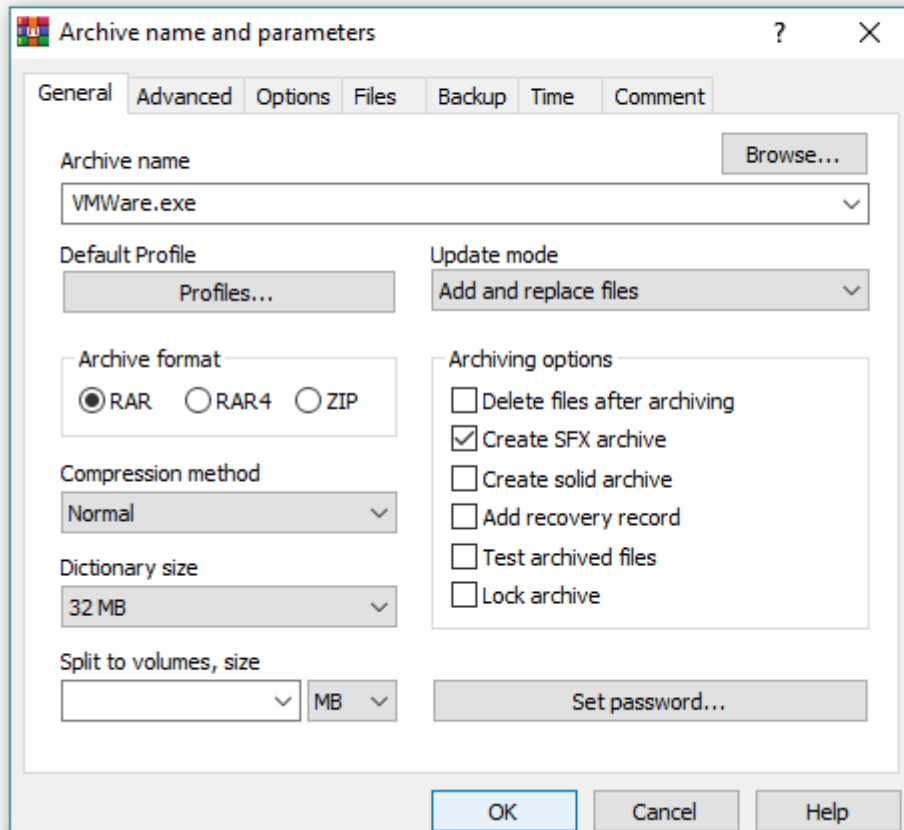


Figure 2. Create an SFX archive

- c. In the **Advanced** tab, click **SFX options** and select **Advanced SFX options**.
- d. In the **General** tab, specify the path to extract C:\Temp and check the **Absolute Path** radio button.

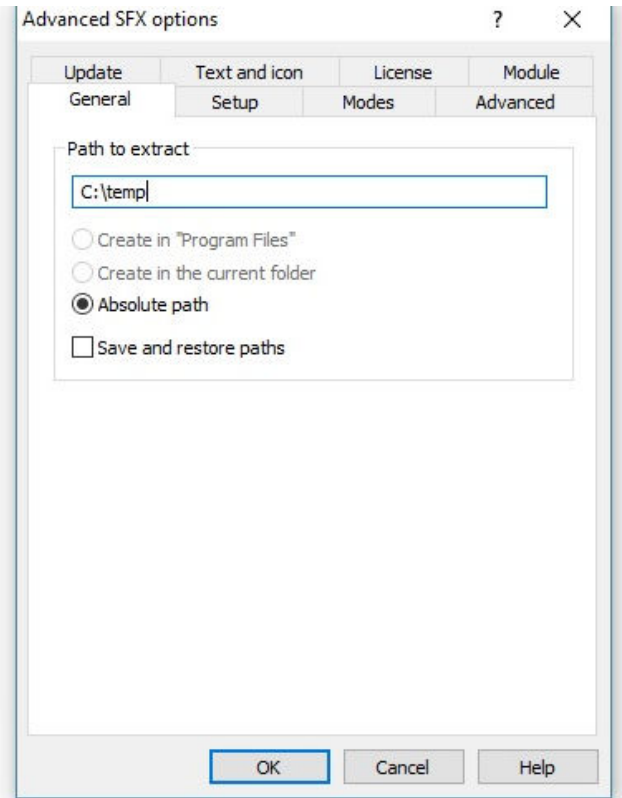
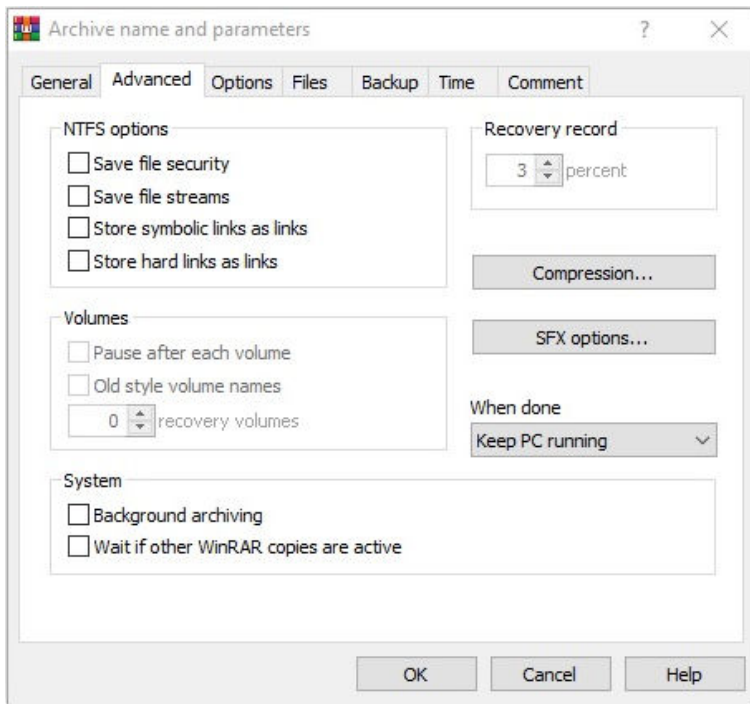


Figure 3. SFX Options

- e. In the **Advanced** tab, click **SFX options** and select **Advanced SFX options**.
- f. Click **Update** and check the **Extract and replace files** radio button under **Update mode**
- g. Check the **Overwrite all files** radio button under **Overwrite mode**.

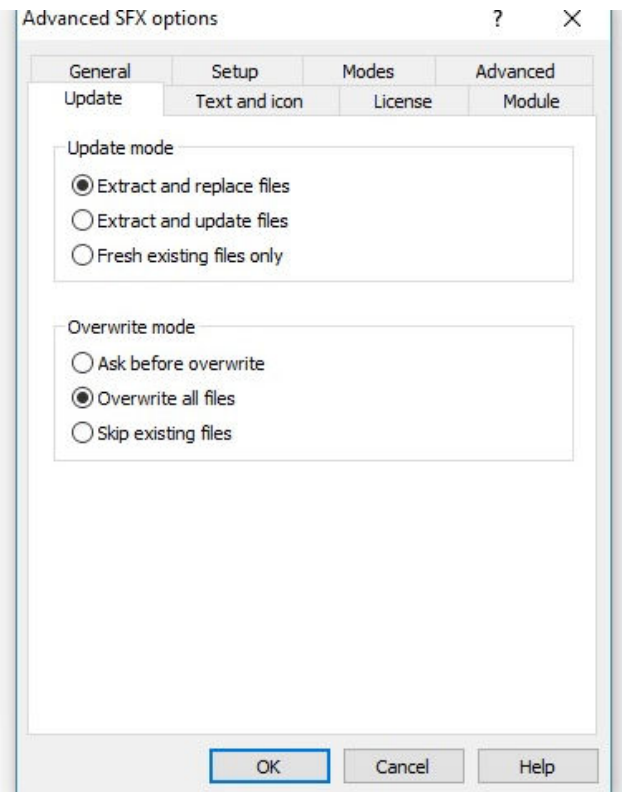
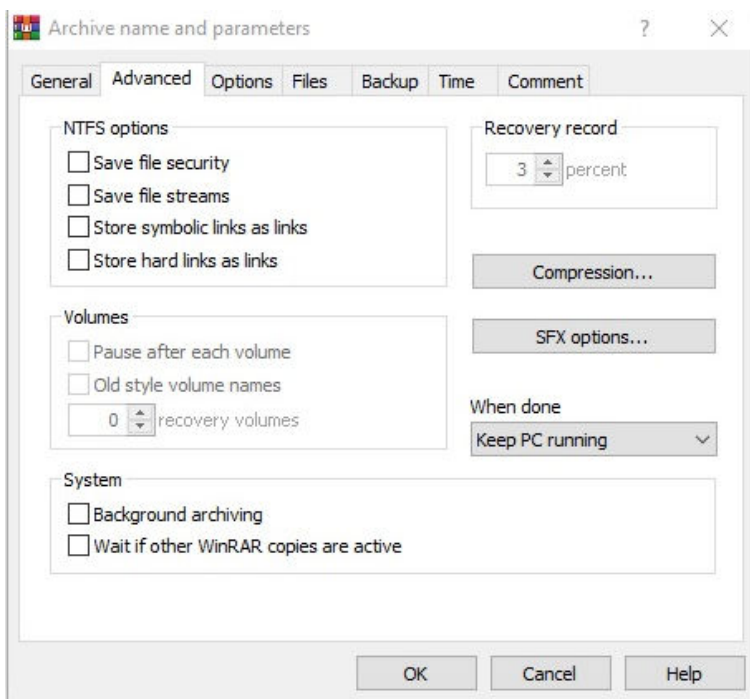


Figure 4. Overwrite all files

- h. In the **Setup** tab, specify the file in the **Run after extraction** field under **Setup program**.

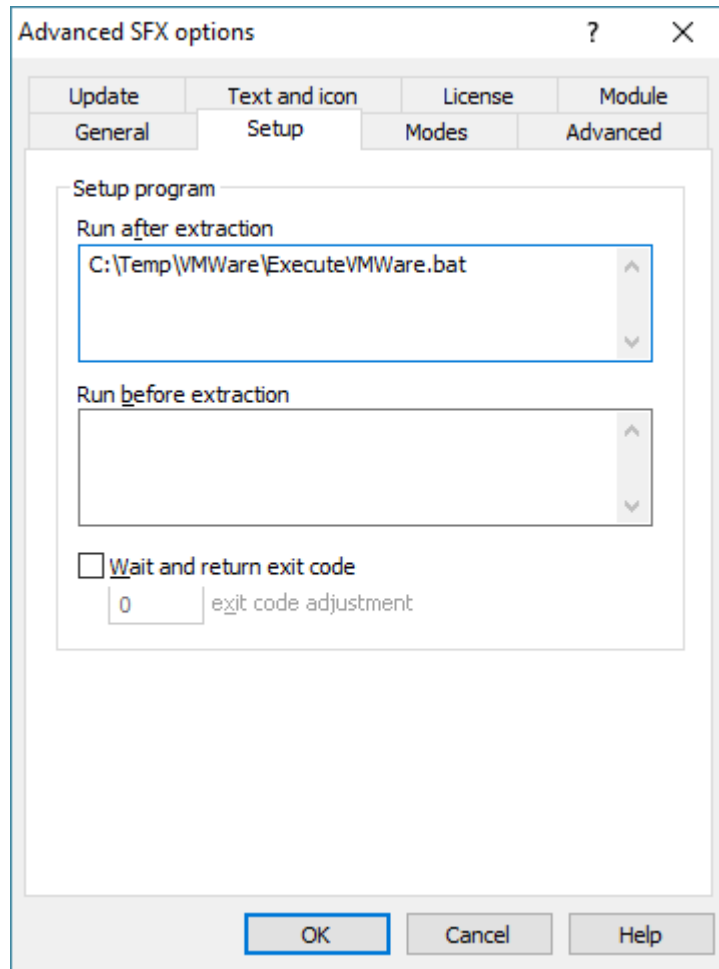


Figure 5. Advance SFX options

- i. In the **Advanced** tab, enter the complete path along with the file type to delete in **Files to delete in the destination folder**.

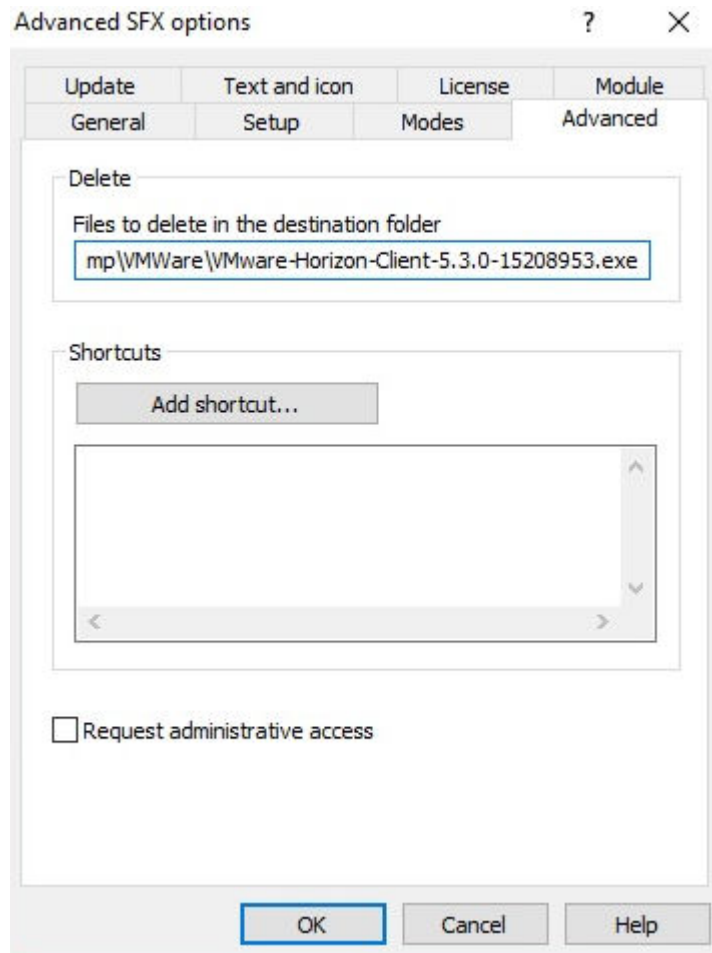


Figure 6. Files to delete

- j. Click **OK**.
- k. In the **Archive name and Parameter** tab, go to **Options** and check the **Add for larger file** radio button under **Quick open information**.

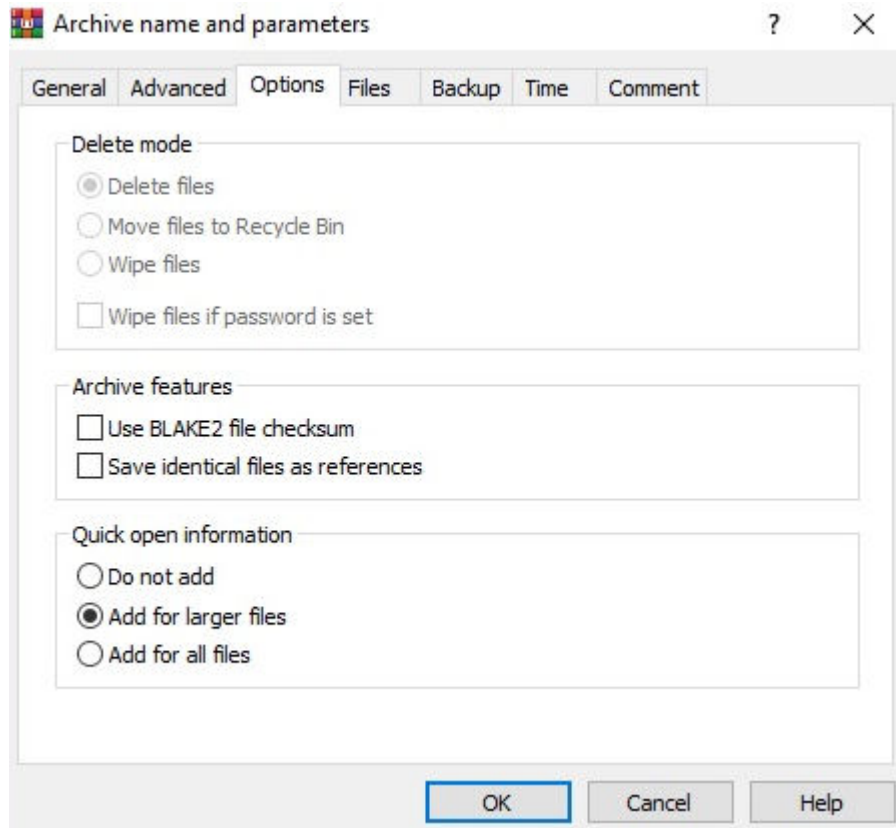


Figure 7. Add for larger files

- i. In the **Files** tab, click **Append...** to append all files and click **OK**.

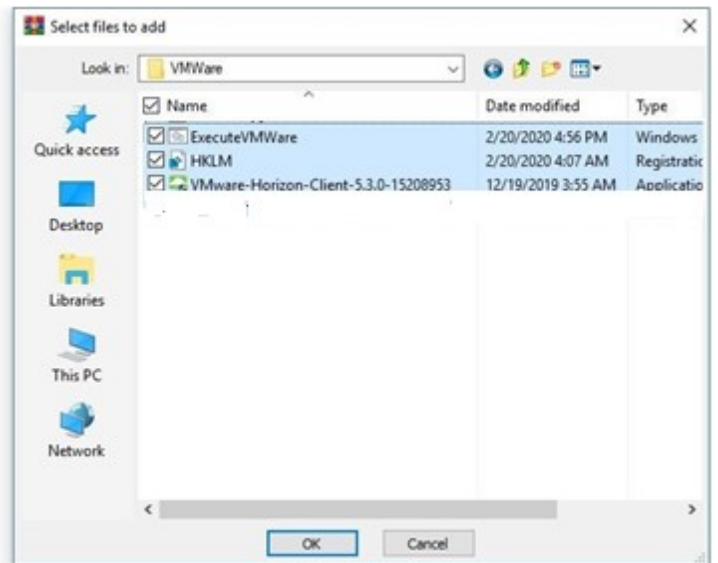
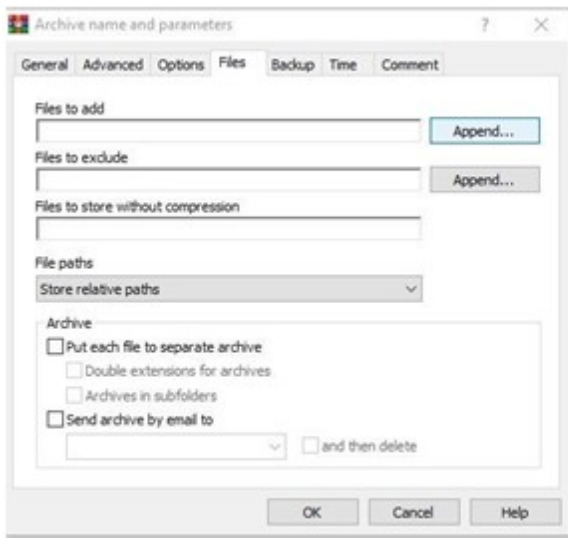


Figure 8. Append files

- m. Go to the **Comment** tab, select the content that is mentioned in the **Enter a comment manually** field and click **OK**.

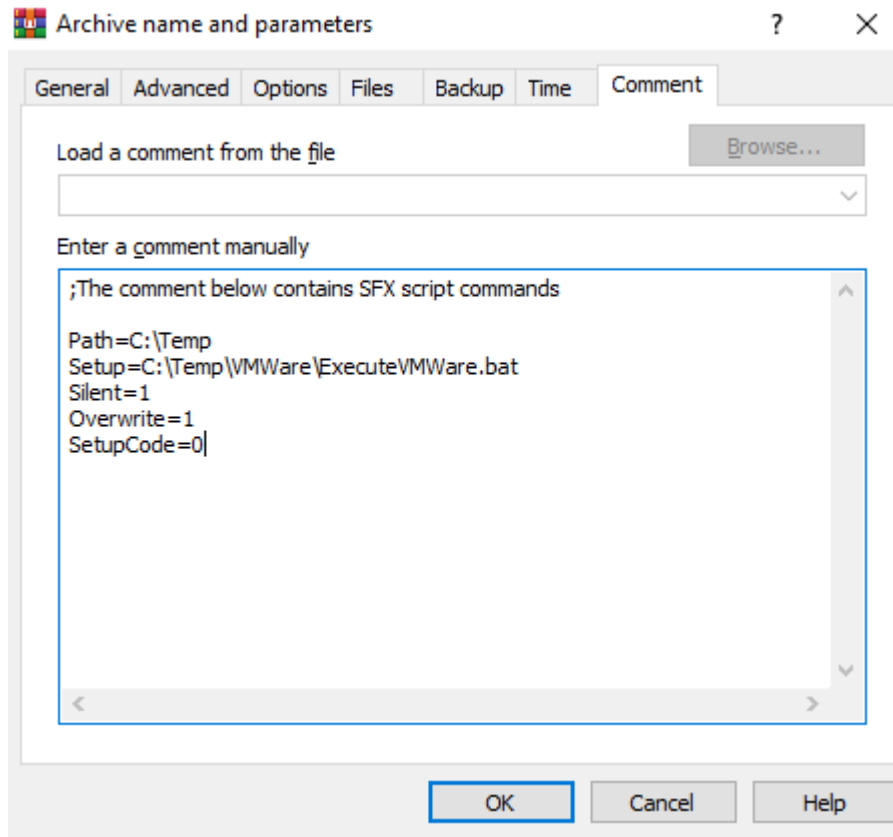


Figure 9. Entering comment manually

Next steps

Install the add-on package using Wyse Management Suite—see [Install add-on package using Wyse Management Suite](#).

Add-on creation for VMware Carbon Black Sensor packages

Prerequisites

The VMware Carbon Black Sensor package installation is supported only from Windows 10 Enterprise 2019 LTSC unified image onwards. Before installing the package, ensure that Write Filter is disabled. If Write Filter is not disabled, it fills the Unified Write Filter Overlay and the updates that are made are not persistent across reboot.

NOTE: For more information about Windows Desktop client version, see *What's new in the Windows Desktop client* at www.carbonblack.com.

Steps

1. Download the VMware Carbon Black Sensor package by following the below steps:
 - a. Log in to VMware Carbon Black Cloud console.
 - b. On the navigation bar, click **Inventory** and then click **Endpoints**.
 - c. Click **Sensor Options** and click **Download sensor kits**.
 - d. Select the appropriate sensor kit version and click the link to download it.
2. Create a folder named C:\Temp\VMCB on your thin client.
3. Copy the Carbon Black sensor to the C:\Temp\VMCB folder.
4. Copy the following text on a notepad and save the file as ExecuteVMCB.bat:

```
@echo off
msiexec /q /i C:\Temp\VMCB\installer_vista_win7_win8-64-3.6.0.1979.msi /L* C:\
  \Logs\cb.log COMPANY_CODE="<CompanyCode>"
del C:\Temp\VMCB\installer_vista_win7_win8-64-3.6.0.1979.msi
```

5. Copy the ExecuteVMCB.bat file to the C:\Temp\VMCB folder.

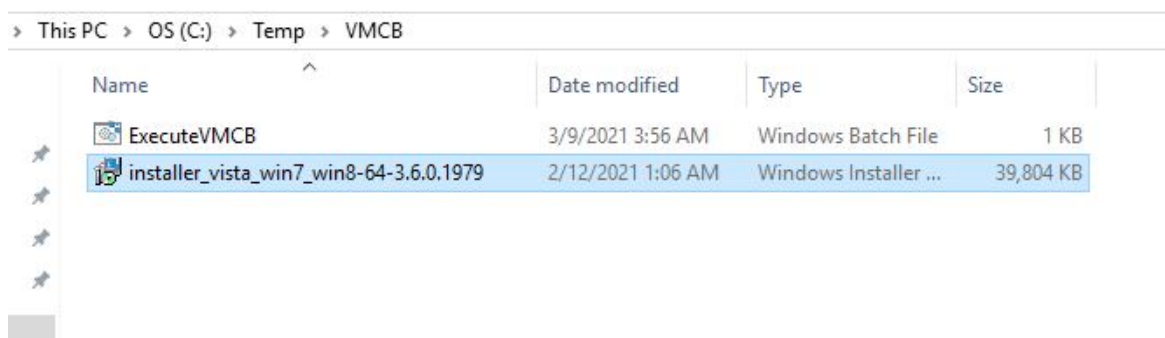


Figure 10. Package structure

6. Create a self-extractor package by following the steps below:
 - a. Right-click the VMCB folder from C:\Temp\ and select **Add to archive**.
 - b. In the **General** tab, click **Create SFX archive**.

NOTE: You can use WinRAR or any available application to create an **SFX** archive.

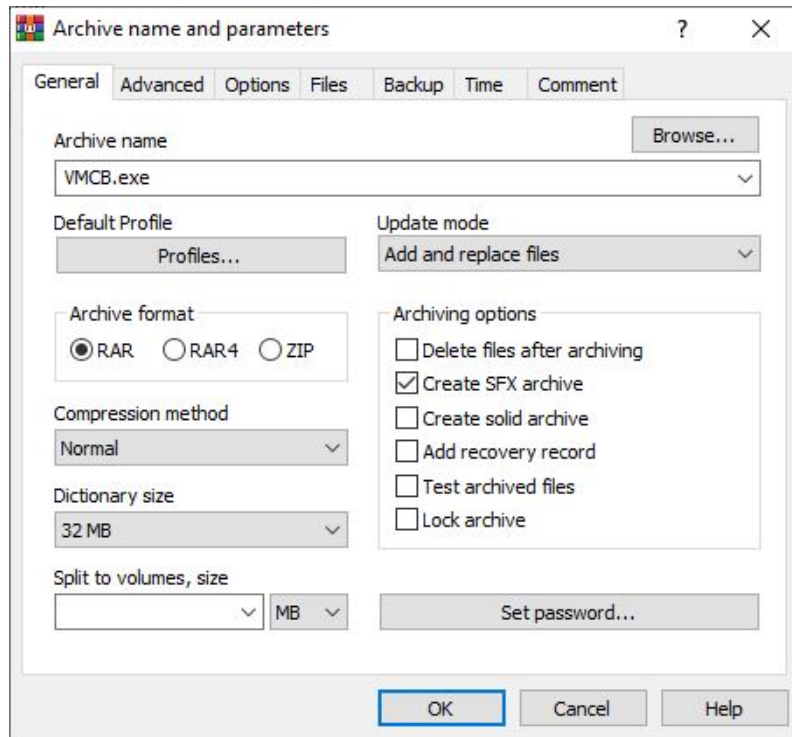


Figure 11. Create an SFX archive

- c. In the **Advanced** tab, click **SFX options** and select **Advanced SFX options**.
- d. In the **General** tab, specify the path to extract C:\Temp and check the **Absolute Path** radio button.

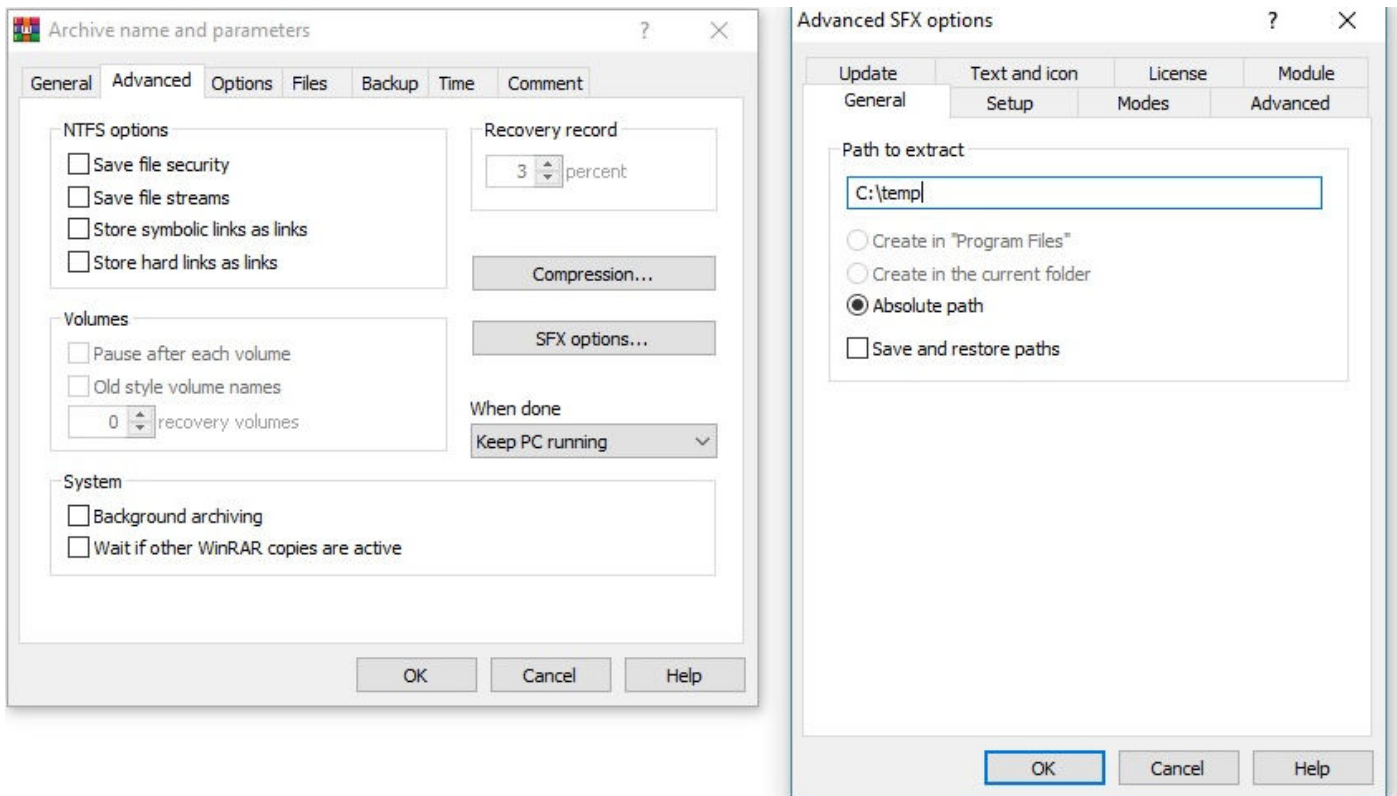


Figure 12. SFX Options

- e. In the **Advanced** tab, click **SFX options** and select **Advanced SFX options**.
- f. Click **Update** and check the **Extract and replace files** radio button under **Update mode**.
- g. Check the **Overwrite all files** radio button under **Overwrite mode**.

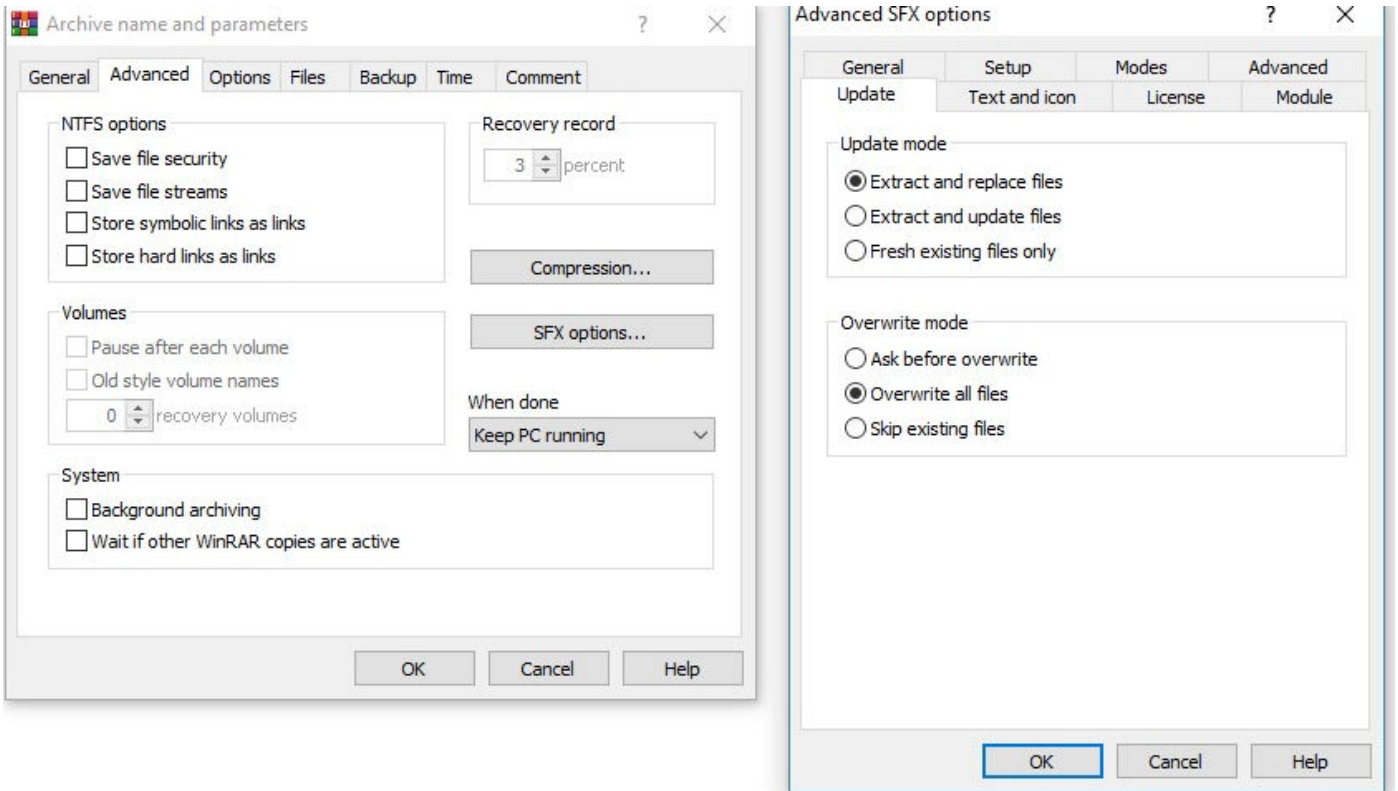


Figure 13. Overwrite all files

- h. In the **Setup** tab, specify the file in the **Run after extraction** field under **Setup program**.

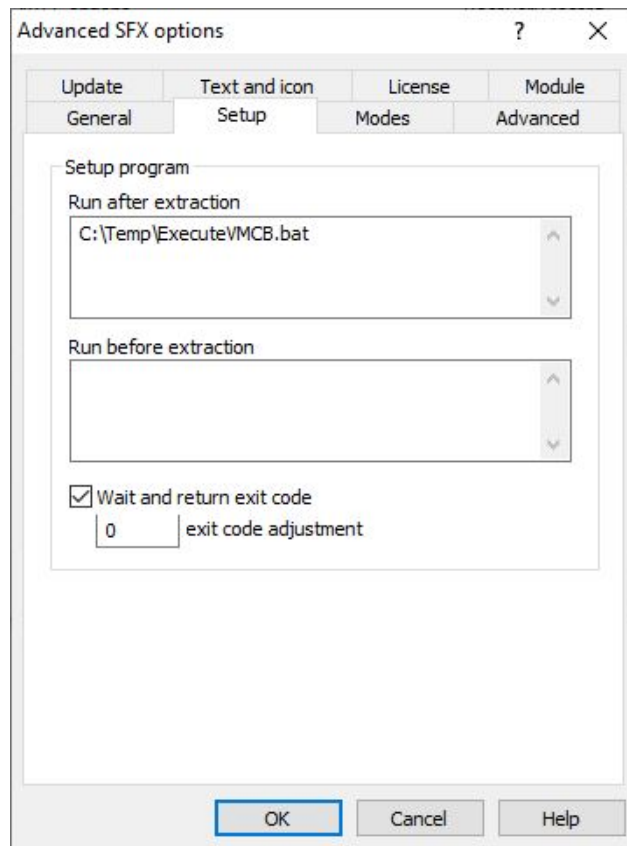


Figure 14. Advanced SFX options

- i. Select the **Wait and return exit code** check box.
- j. In the **Advanced** tab, enter the complete path along with the file type to delete in **Files to delete in the destination folder**.

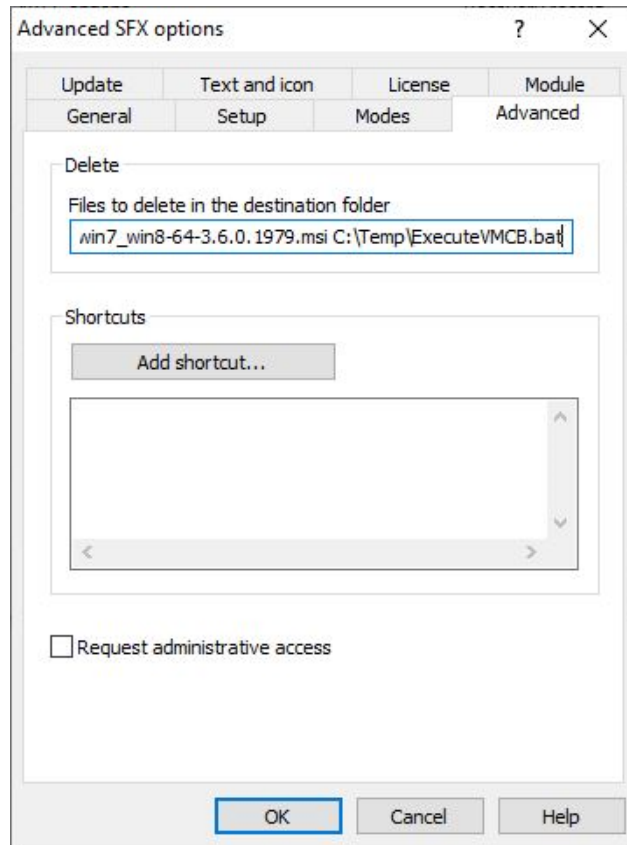


Figure 15. Files to delete

- k. In the **Modes** tab, select the **Hide all** radio button.

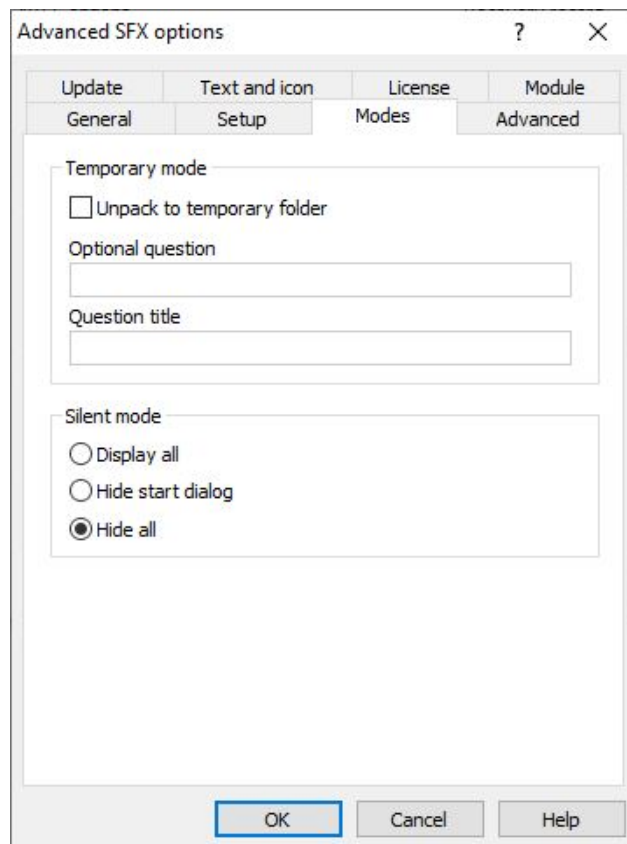


Figure 16. Hide all

- l. Click **OK**.

- m. In the **Archive name and Parameter** tab, go to **Options** and check the **Add for larger file** radio button under Quick open information.

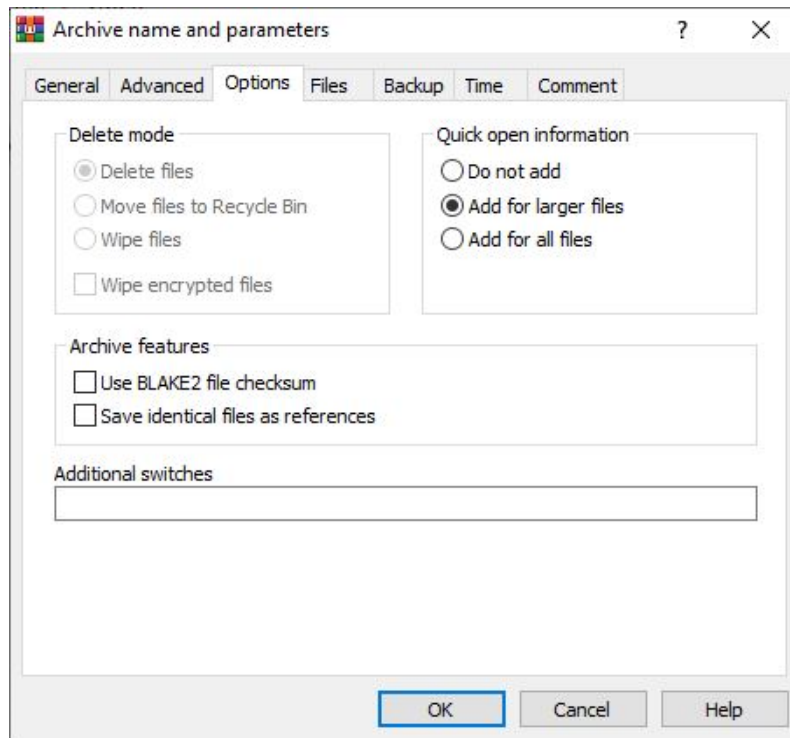


Figure 17. Add for larger files

- n. In the **Files** tab, click **Append...** to append all files and click **OK**.

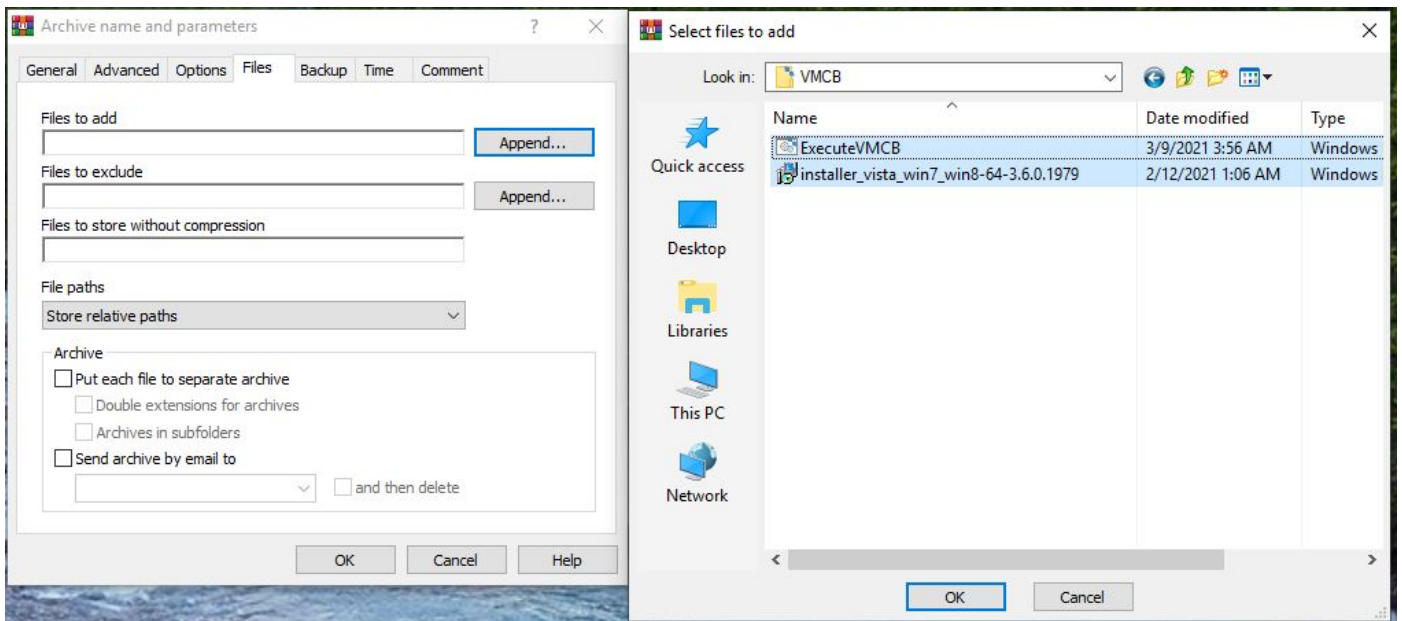


Figure 18. Append files

- o. Go to the **Comment** tab, select the content that is mentioned in the **Enter a comment manually** field and click **OK**.

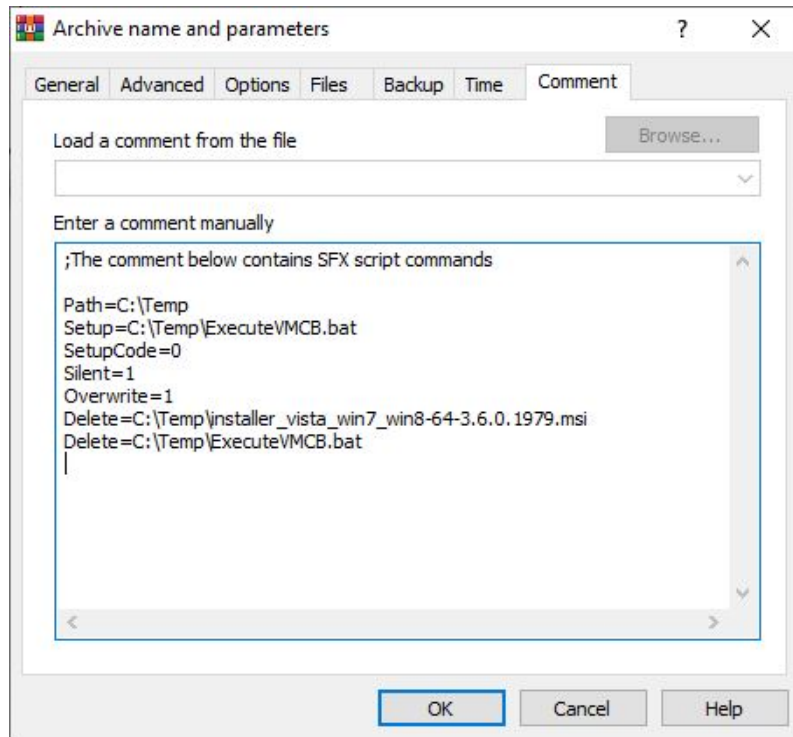


Figure 19. Entering comment manually

Next steps

Install the add-on package using Wyse Management Suite—see [Install add-on package using Wyse Management Suite](#).

Add-on creation and customization for Citrix Workspace packages

Prerequisites

Before installing the package, ensure that Write Filter is disabled. If Write Filter is not disabled, it fills the Unified Write Filter Overlay and the updates made are not persistent across reboot.

Steps

1. Download the Citrix Workspace App from, <https://www.citrix.com/downloads/workspace-app/windows/>.
2. Create a folder named C:\Temp\CitrixWorkspaceApp on your thin client.
3. Copy the following text on a notepad and save the file as HKLM.reg:

```
Windows Registry Editor Version 5.00

[HKEY_CURRENT_USER\Software\Citrix\Receiver]
"EnableFTU"=dword:00000000

;;;;;;;;;;;;;;;;;;;;;;;;;;;;;;;;;;;;;;;;;;;;;;;;;;;;;;;;;;;;;;;;;;;;;;;;
;;;Disable Client C Drive Mapping in Citrix Session
;;;;;;;;;;;;;;;;;;;;;;;;;;;;;;;;;;;;;;;;;;;;;;;;;;;;;;;;;;;;;;;;;;;;;;;;

[HKEY_LOCAL_MACHINE\SOFTWARE\Wow6432Node\Citrix\ICA
Client\Engine\Configuration\Advanced\Modules\ClientDrive]
"DisableDrives"="C"

;;;;;;;;;;;;;;;;;;;;;;;;;;;;;;;;;;;;;;;;;;;;;;;;;;;;;;;;;;;;;;;;;;;;;;;;
;Fix for TIR5997- USB Redirection is not working on XenDesktop5.0 with new Citrix
receiver
;;;;;;;;;;;;;;;;;;;;;;;;;;;;;;;;;;;;;;;;;;;;;;;;;;;;;;;;;;;;;;;;;;;;;;;;

[HKEY_LOCAL_MACHINE\SOFTWARE\Wow6432Node\Citrix\ICA Client\GenericUSB\Devices]
"AutoRedirectAudio"=dword:00000001
"AutoRedirectPrinters"=dword:00000001
"AutoRedirectVideo"=dword:00000001
"AutoRedirectStorage"=dword:00000001
"AutoRedirectImage"=dword:00000001

;;;;;;;;;;;;;;;;;;;;;;;;;;;;;;;;;;;;;;;;;;;;;;;;;;;;;;;;;;;;;;;;;;;;;;;;
;;;Disable Citrix Receiver First Time User Prompt;;;;;;;;;;;;;;;;;;;;;;;;;;;;;;;;;;;;;;;;
;;;;;;;;;;;;;;;;;;;;;;;;;;;;;;;;;;;;;;;;;;;;;;;;;;;;;;;;;;;;;;;;;;;;;;;;

[HKEY_CURRENT_USER\Software\Citrix\Receiver]
"EnableFTU"=dword:00000000
"HideAddAccountOnRestart"=dword:00000001

;;;;;;;;;;;;;;;;;;;;;;;;;;;;;;;;;;;;;;;;;;;;;;;;;;;;;;;;;;;;;;;;;;;;;;;;
;;;;;;;;;;;;;;;;;;;;;;;;;;;;;;;;;;;;;;;;;;;;;;;;;;;;;;;;;;;;;;;;;;;;;;;;
;;;Fix for Media keys (F9 to F12 and volume increase, decrease and mute) fail to work
in citrix session.;;;;;;;;;;;;;;;;;;;;;;;;;;;;;;;;;;;;;;;;;;;;;;;;;;;;;;;;
;;;;;;;;;;;;;;;;;;;;;;;;;;;;;;;;;;;;;;;;;;;;;;;;;;;;;;;;;;;;;;;;;;;;;;;;
;;;;;;;;;;;;;;;;;;;;;;;;;;;;;;;;;;;;;;;;;;;;;;;;;;;;;;;;;;;;;;;;;;;;;;;;

[HKEY_LOCAL_MACHINE\SOFTWARE\wow6432node\Citrix\ICA Client]
"AddScanCodes"=dword:00000001

[HKEY_LOCAL_MACHINE\SOFTWARE\Wow6432Node\Microsoft\Windows\CurrentVersion\Run]
```

```
"ConnectionCenter"--  
"Redirector"--
```

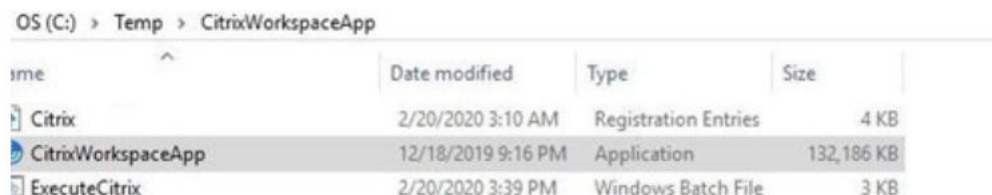
NOTE: Edit the file to customize the Citrix registry.

4. Copy the following text on a notepad and save the file as ExecuteCitrix.bat:

```
@echo  
REM For Changing the env. variable to C:\Windows\Temp otherwise installation of add-  
on fails  
reg add HKCU\Environment /f /v "TEMP" /t REG_SZ /d C:\Windows\Temp reg add  
HKCU\Environment /f /v "TMP" /t REG_SZ /d C:\Windows\Temp  
reg add "HKLM\SYSTEM\CurrentControlSet\Control\Session Manager\Environment" /f /v  
"TEMP" /t REG_SZ /d C:\Windows\Temp  
reg add "HKLM\SYSTEM\CurrentControlSet\Control\Session Manager\Environment" /f /v  
"TMP" /t  
REG_SZ /d C:\Windows\Temp  
-----  
rem Installation of the citrix workspace app  
cd Temp\CitrixWorkspaceApp\ .\CitrixWorkspaceApp.exe  
ADDLOCAL=ReceiverInside,ICA_Client,AM,SELFSERVICE,DesktopViewer,USB,Flash,Vd3d,WebHelp  
er /rcu /silent /quiet /AutoUpdateCheck=disabled  
-----  
rem For adding reg merges and citrix customizations  
regedit.exe /s C:\Temp\CitrixWorkspaceApp\Citrix_regupdate.reg  
-----  
rem For Adding firewall rules  
netsh advfirewall firewall add rule name = "Citrix HDX Engine" dir=in  
program="c:\Program Files (x86)\citrix\ica client\wfica32.exe" action=allow  
description="Citrix HDX Engine"  
enable=yes profile=any protocol=UDP  
netsh advfirewall firewall add rule name = "Citrix HDX Engine" dir=in  
program="c:\Program Files (x86)\citrix\ica client\wfica32.exe" action=allow  
description="Citrix HDX Engine"  
enable=yes profile=any protocol=TCP  
-----  
--  
rem For reverting back the environmental to Z: after installation is complete  
reg add HKCU\Environment /f /v "TEMP" /t REG_SZ /d Z:\ reg add HKCU\Environment /f /v  
"TMP" /t REG_SZ /d Z:\  
reg add "HKLM\SYSTEM\CurrentControlSet\Control\Session Manager\Environment" /f /v  
"TEMP" /t REG_SZ /d Z:\  
reg add "HKLM\SYSTEM\CurrentControlSet\Control\Session Manager\Environment" /f /v  
"TMP" /t  
REG_SZ /d Z:\
```

For more information about latest updates and examples, see the respective CitrixWorkspaceApp release notes.

NOTE: Auto updates are disabled as part of the installation parameter. You should add the silent installation parameter, **/Silent** if the package needs to be installed in a remote environment.



OS (C:) > Temp > CitrixWorkspaceApp

| name | Date modified | Type | Size |
|--------------------|--------------------|----------------------|------------|
| Citrix | 2/20/2020 3:10 AM | Registration Entries | 4 KB |
| CitrixWorkspaceApp | 12/18/2019 9:16 PM | Application | 132,186 KB |
| ExecuteCitrix | 2/20/2020 3:39 PM | Windows Batch File | 3 KB |

Figure 20. Package structure

5. Create a self extractor package using the following steps:
 - a. Right-click the **CitrixWorkspaceApp** and select **Add to archive**.
 - b. Click **Create SFX archive**.

NOTE: You can use WinRAR or any available application to create an **SFX** archive.

| <input type="checkbox"/> | Name | Date modified | Type | Size |
|-------------------------------------|--------------------|-------------------|-------------|------|
| <input checked="" type="checkbox"/> | CitrixWorkspaceApp | 2/20/2020 3:40 PM | File folder | |

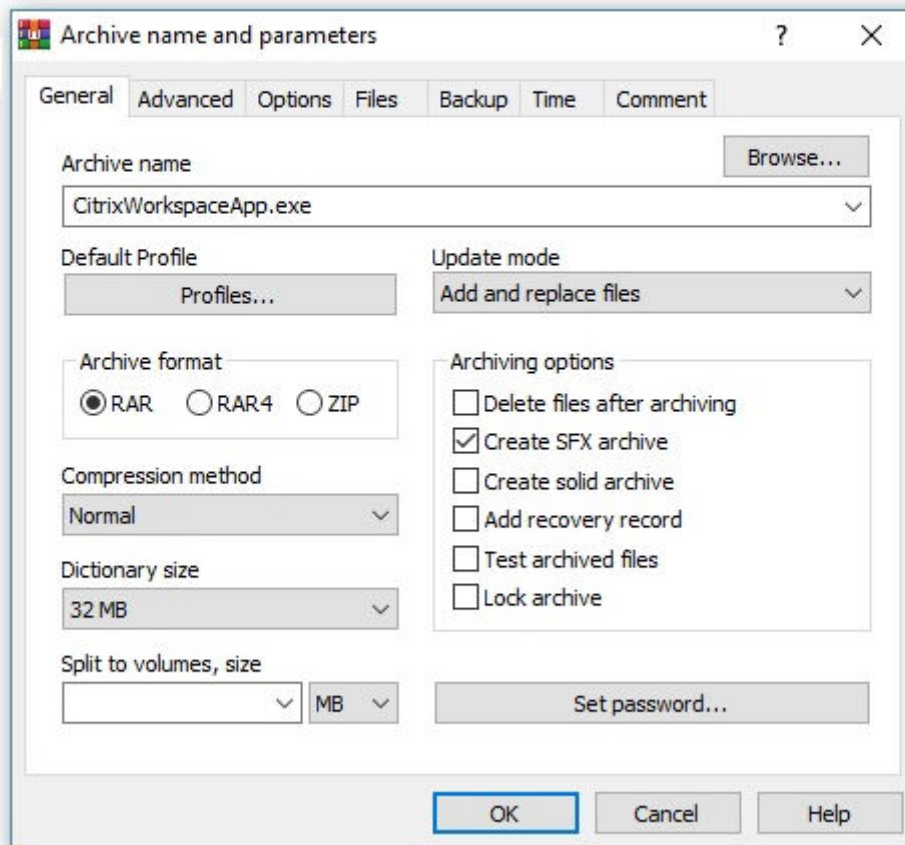


Figure 21. Create an SFX archive

- c. In the **Advanced** tab, click **SFX options** and select **Advanced SFX options**.
- d. In the **General** tab, specify the path to extract C:\Temp and check the **Absolute Path** radio button.

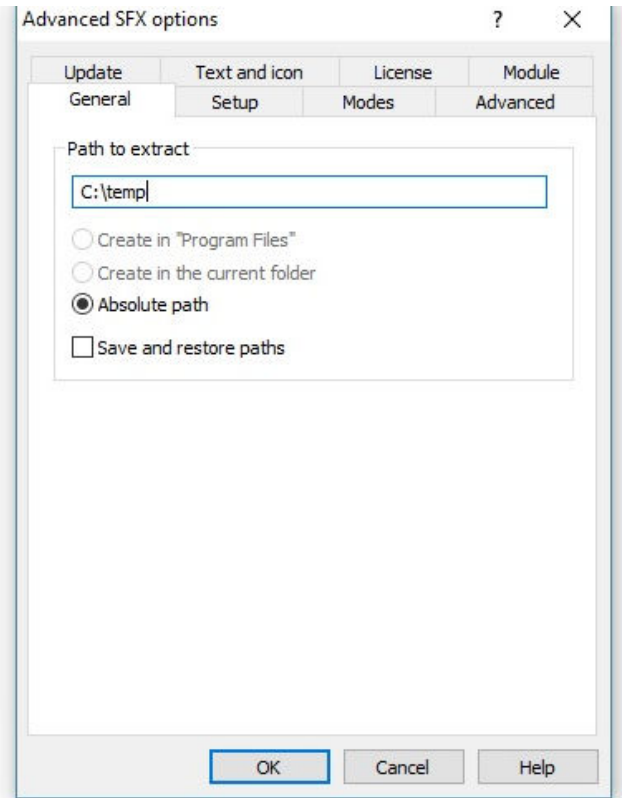
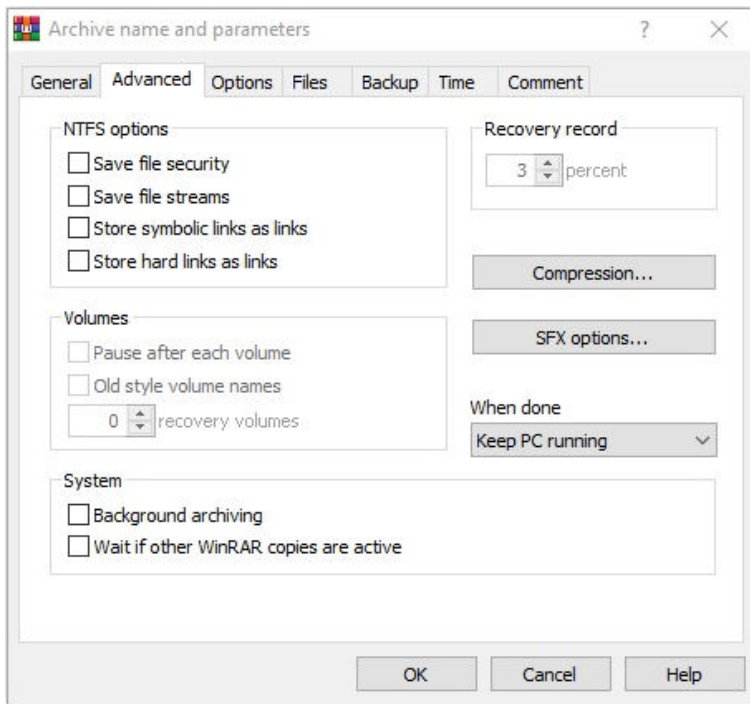


Figure 22. SFX Options

- e. In the **Advanced** tab, click **SFX options** and select **Advanced SFX options**.
- f. Click **Update** and check the **Extract and replace files** radio button under **Update mode**.
- g. Check the **Overwrite all files** radio button under **Overwrite mode**.

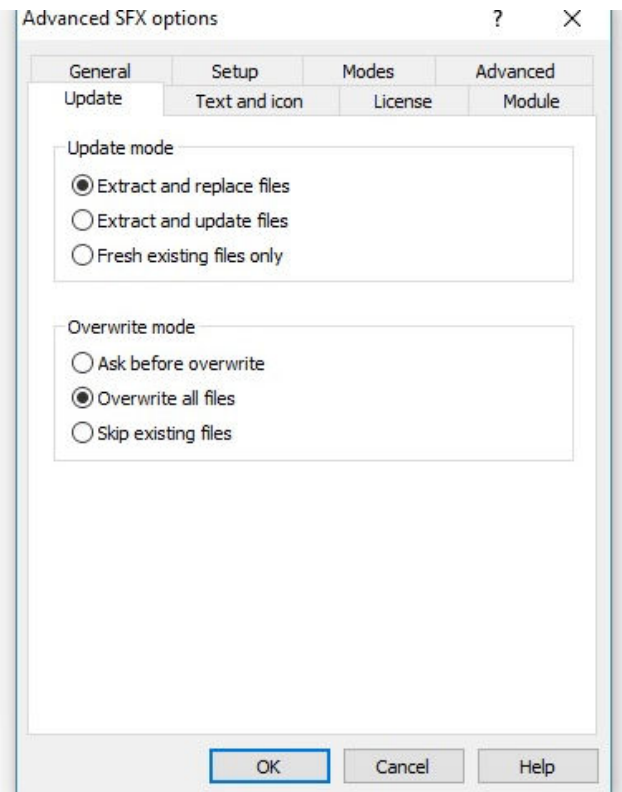
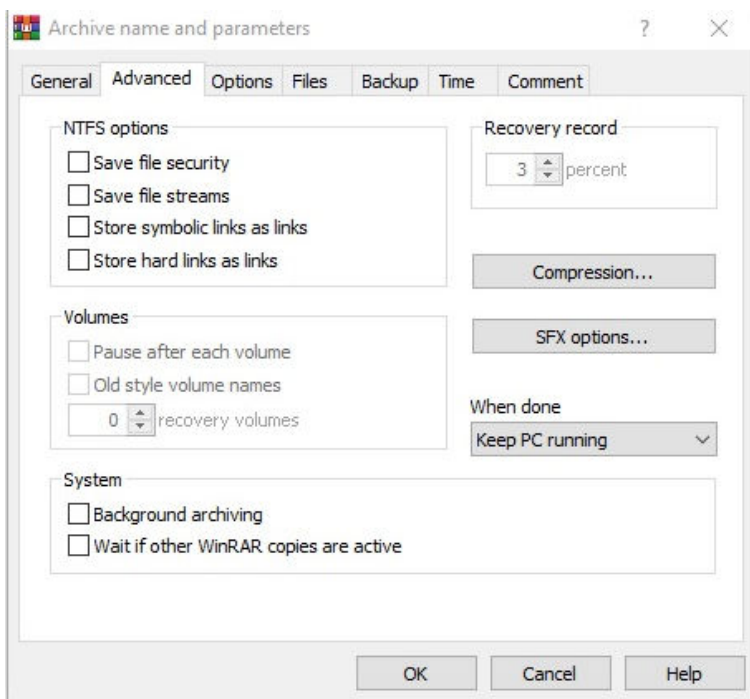


Figure 23. Overwrite all files

- h. In the **Setup** tab, specify the file in the **Run after extraction** field under **Setup program**.

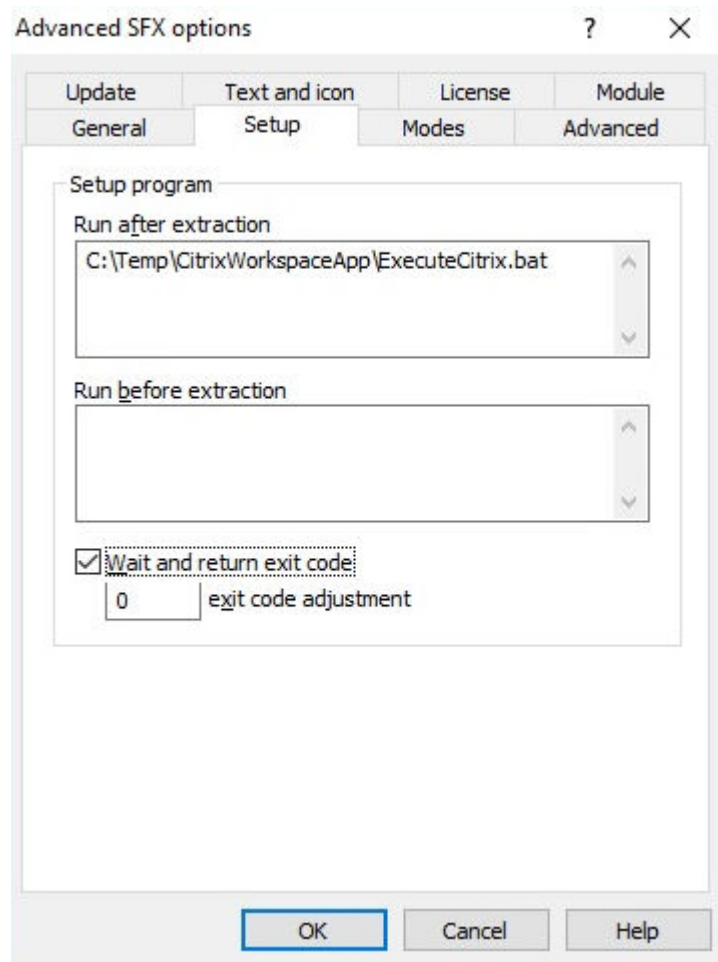


Figure 24. Advance SFX options

- i. In the **Advanced** tab, enter the complete path along with the file type to delete in **Files to delete in the destination folder**.
- j. Click **OK**.

OS (C:) > Temp > CitrixWorkspaceApp

| name | Date modified | Type | Size |
|--------------------|--------------------|----------------------|------------|
| Citrix | 2/20/2020 3:10 AM | Registration Entries | 4 KB |
| CitrixWorkspaceApp | 12/18/2019 9:16 PM | Application | 132,186 KB |
| ExecuteCitrix | 2/20/2020 3:39 PM | Windows Batch File | 3 KB |

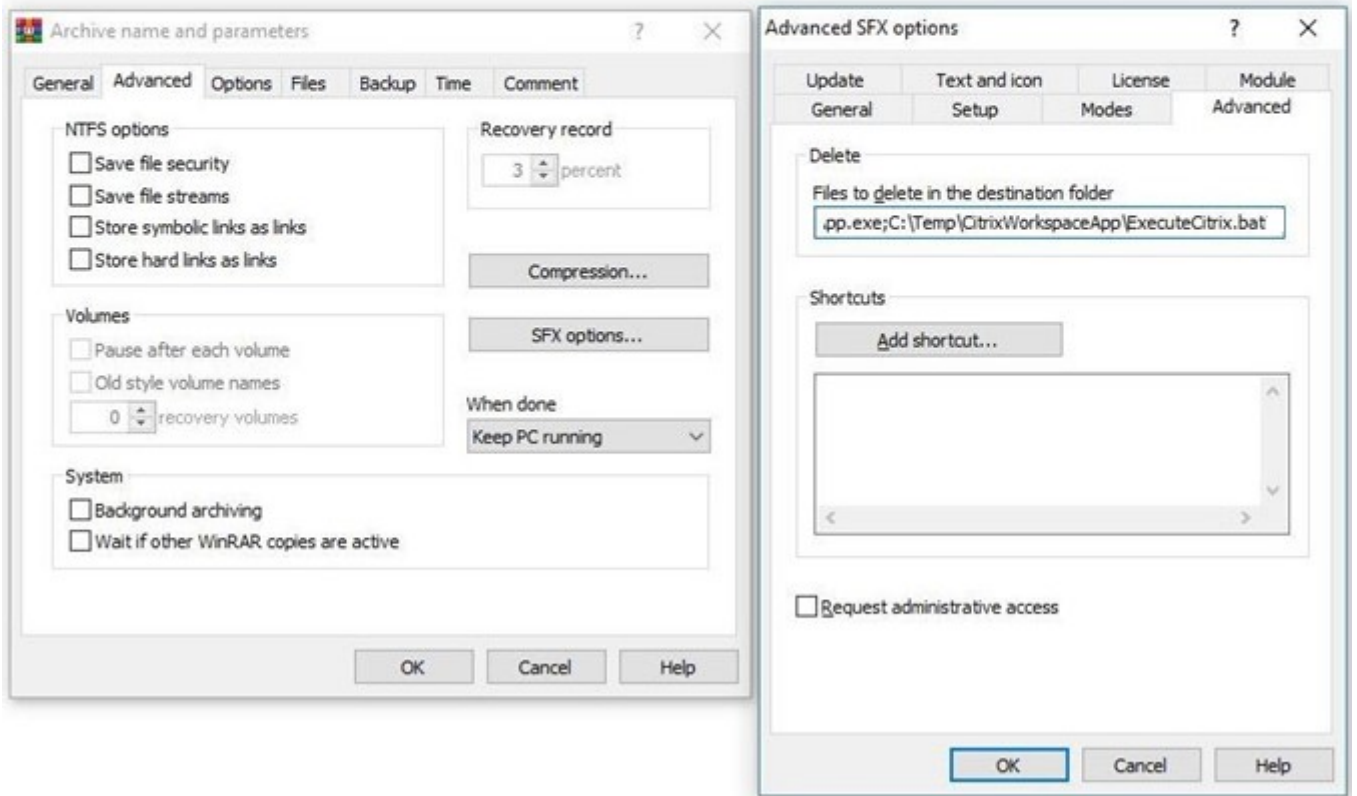


Figure 25. Files to delete

- k. In the **Archive name and Parameters** tab, go to **Options** and check the **Add for larger file** radio button under **Quick open information**.

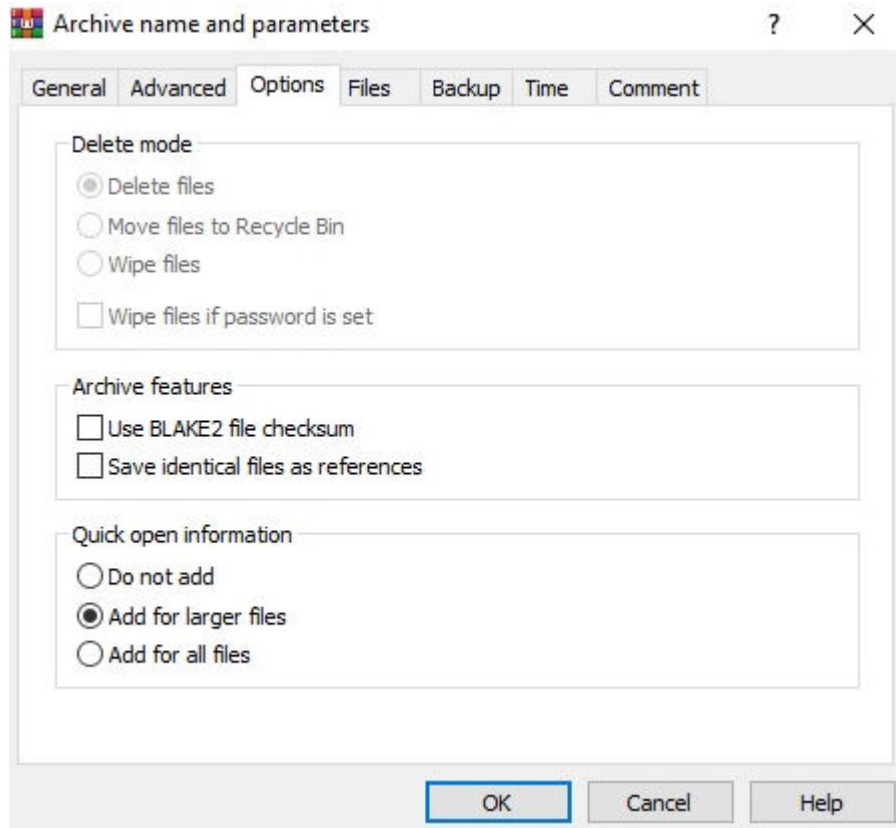


Figure 26. Add for larger files

- l. In the **Files** tab, append all the files and click **OK**.
- m. Go to the **Comment** tab, select the content that is mentioned in **Enter a comment manually** field and click **OK**.

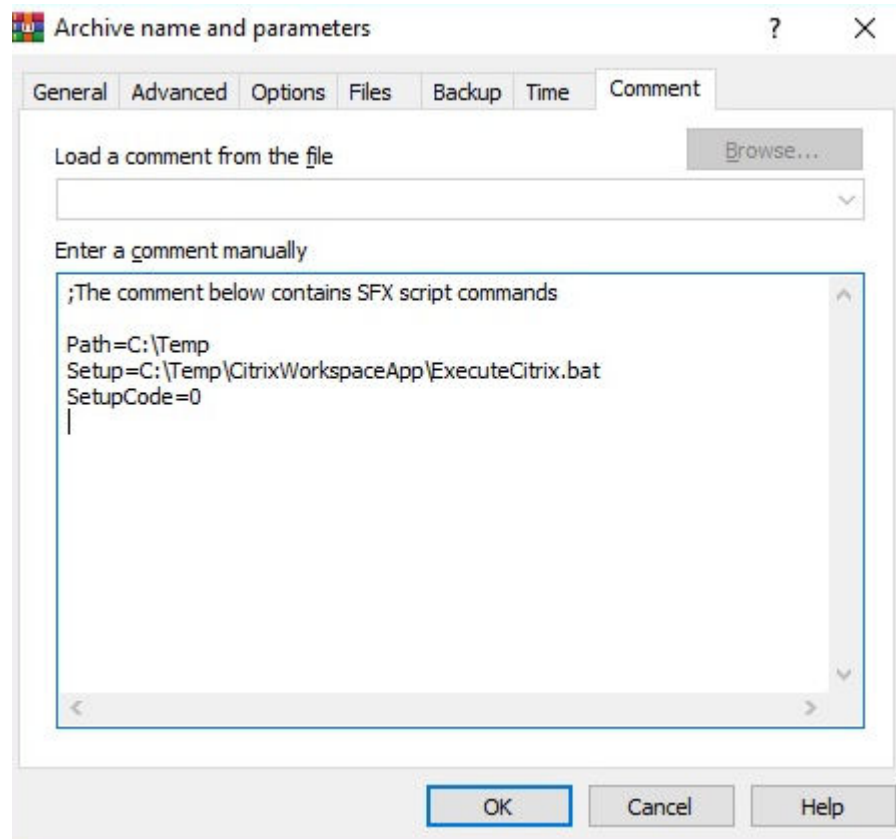


Figure 27. Entering a comment manually

Next steps

Install the add-on package using Wyse Management Suite—see [Install add-on package using Wyse Management Suite](#).

Add-on creation for Amazon WorkSpaces client packages

Prerequisites

This application installation is supported only from Windows 10 Enterprise 2019 LTSC unified image. Before installing the package, ensure that Write Filter is disabled. If Write Filter is not disabled, it fills the Unified Write Filter Overlay and the updates made are not persistent across reboot.

NOTE: For more information about Amazon WorkSpaces client version, see the release notes section in *Amazon WorkSpaces User Guide* at www.docs.aws.amazon.com.

Steps

1. Download the Amazon Workspace client package from <https://clients.amazonworkspaces.com/>.
2. Create a folder named C:\Temp\AWS on your thin client.
3. Copy the Amazon WorkSpace client to the C:\Temp\AWS folder.
4. Copy the following text on a notepad and save the file as HKCU.reg:

```
Windows Registry Editor Version 5.00

[HKEY_CURRENT_USER\Software\Amazon Web Services, LLC\Amazon WorkSpaces\WinSparkle]
"CheckForUpdates"="1"

[HKEY_LOCAL_MACHINE\Software\Amazon Web Services, LLC\Amazon WorkSpaces\WinSparkle]
"CheckForUpdates"="1"
```

NOTE: Edit the file to customize the above registry.

5. Copy HKCU.reg to the C:\Temp\AWS folder.
6. Copy the following text on a notepad and save the file as ExecuteAWS.bat:

NOTE: Ensure that the add netsh command line is on a single line when you execute the command in a batch script.

```
@echo
REM
-----
rem Installation of Amazon workspace space client
msiexec.exe /i C:\Temp\Amazon+WorkSpaces.msi /quiet /norestart

REM-----
---
rem For adding reg merges and AWS customizations
regedit.exe /s "C:\Temp\HKCU.reg"
REM-----
---
rem For Adding firewall rules
netsh advfirewall firewall add rule name = "AWS" dir=in program="c:\Program Files
(x86)\Amazon Web Services, Inc\Amazon WorkSpaces\workspaces.exe" action=allow
description="Workspaces" enable=yes profile=any protocol=UDP
rem For Adding firewall rules
netsh advfirewall firewall add rule name = "AWS" dir=in program="c:\Program Files
(x86)\Amazon Web Services, Inc\Amazon WorkSpaces\workspaces.exe" action=allow
description="Workspaces" enable=yes profile=any protocol=TCP
-----
-
del C:\Temp\HKCU.reg
del C:\Temp\Amazon+WorkSpaces.msi
```

For more information about latest updates and examples, see the respective Amazon WorkSpaces release notes.

NOTE: Auto updates are disabled as part of the installation parameter. Add the silent installation parameter, **/Silent** if the package must be installed in a remote environment.

> OS (C:) > Temp > AWS

| Name | Date modified | Type | Size |
|-------------------|--------------------|-----------------------|-----------|
| Amazon+WorkSpaces | 8/10/2020 2:57 PM | Windows Installer ... | 86,734 KB |
| ExecuteAWS | 8/13/2020 11:52 AM | Windows Batch File | 1 KB |
| HKCU | 8/12/2020 1:06 PM | Registration Entries | 1 KB |

Figure 28. Package Structure

7. Copy ExecuteAWS.bat to the C:\Temp\AWS folder.
 8. Create a self-extractor package using the following steps:
 - a. Right-click the AWS folder from C:\Temp\ and select **Add to archive**.
 - b. In the **General** tab, click **Create SFX archive**.
- NOTE:** You can use WinRAR or any available application to create an **SFX** archive.

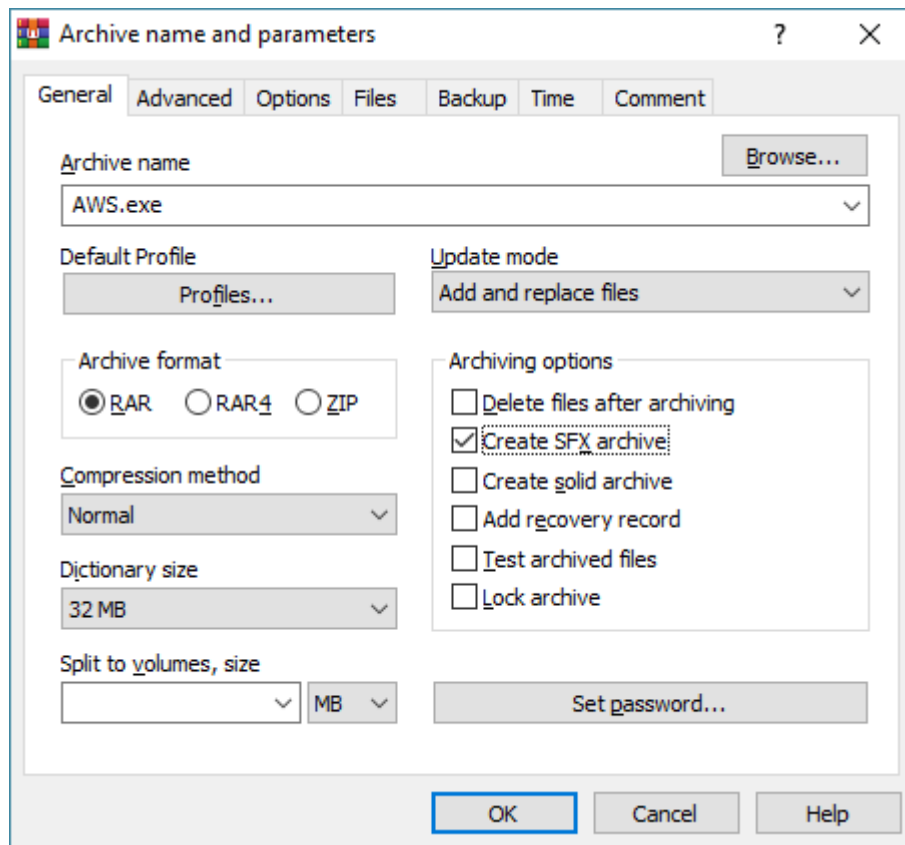


Figure 29. Create an SFX archive

- c. In the **Advanced** tab, click **SFX options** and select **Advanced SFX options**.
- d. In the **General** tab, specify the path to extract C:\Temp and check the **Absolute Path** radio button.

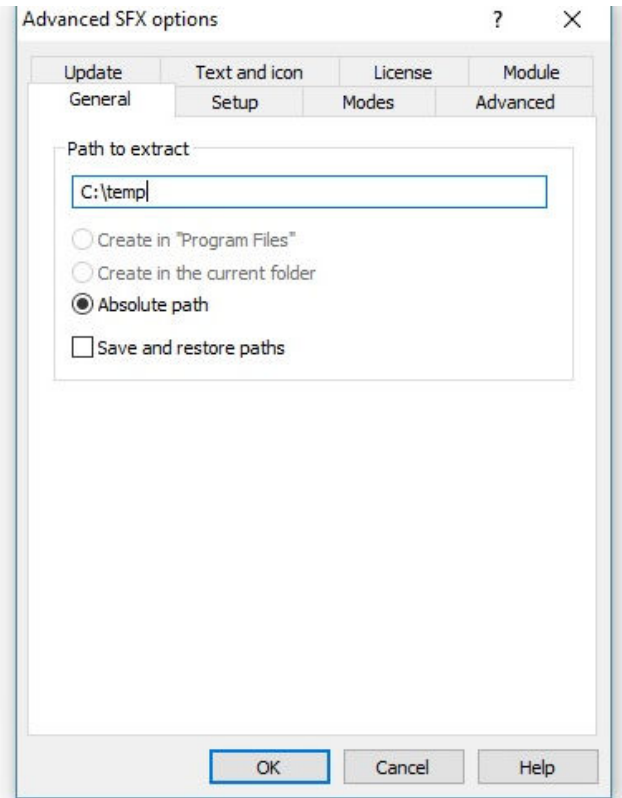
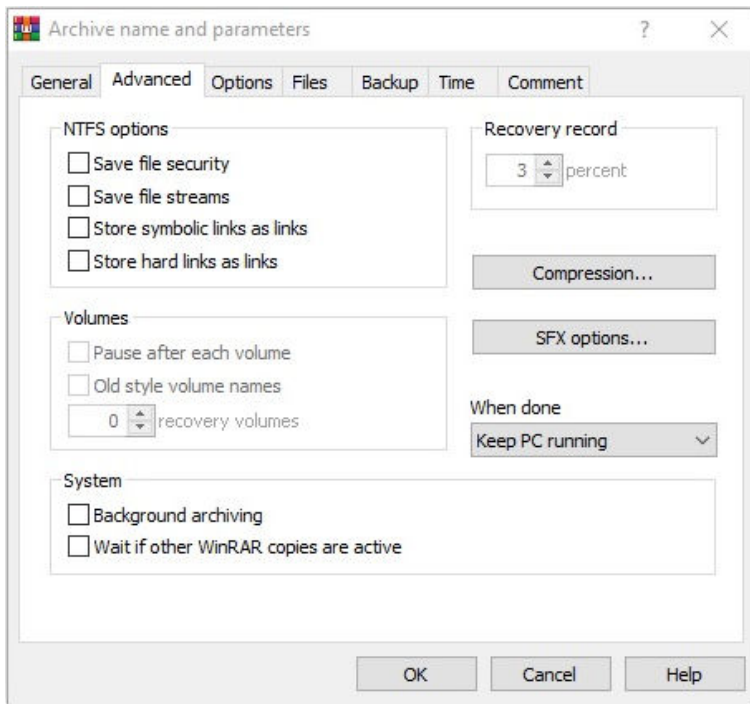


Figure 30. SFX Options

- e. In the **Advanced** tab, click **SFX options** and select **Advanced SFX options**.
- f. Click **Update** and check the **Extract and replace files** radio button under **Update mode**.
- g. Check the **Overwrite all files** radio button under **Overwrite mode**.

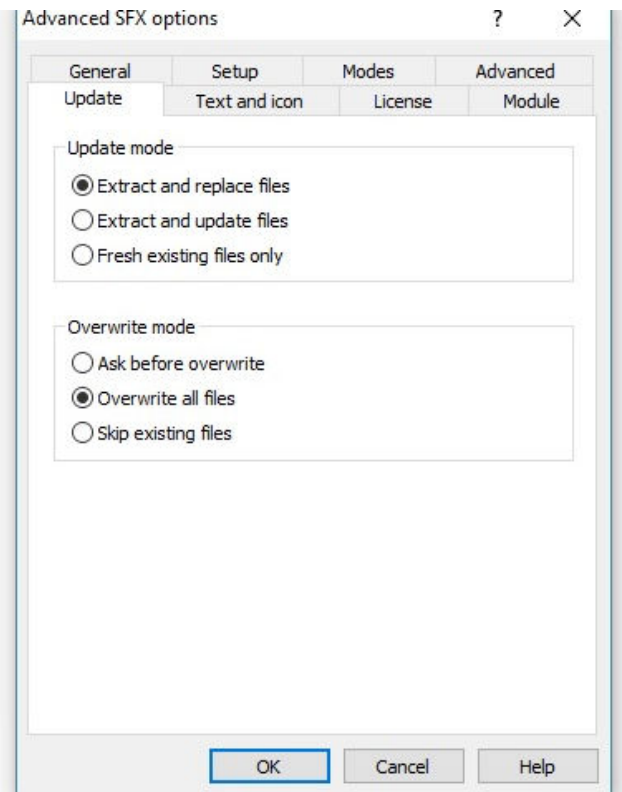
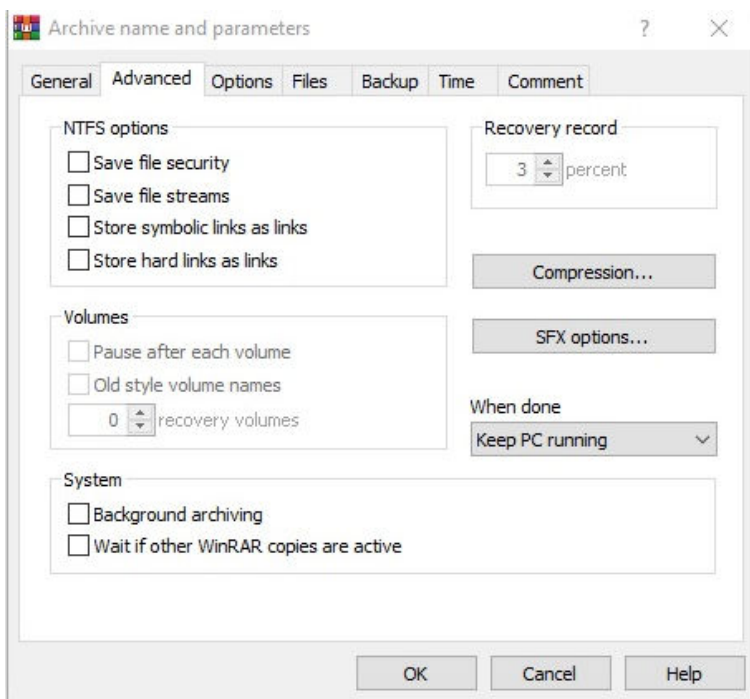


Figure 31. Overwrite all files

- h. In the **Setup** tab, specify the file in the **Run after extraction** field under **Setup program**.

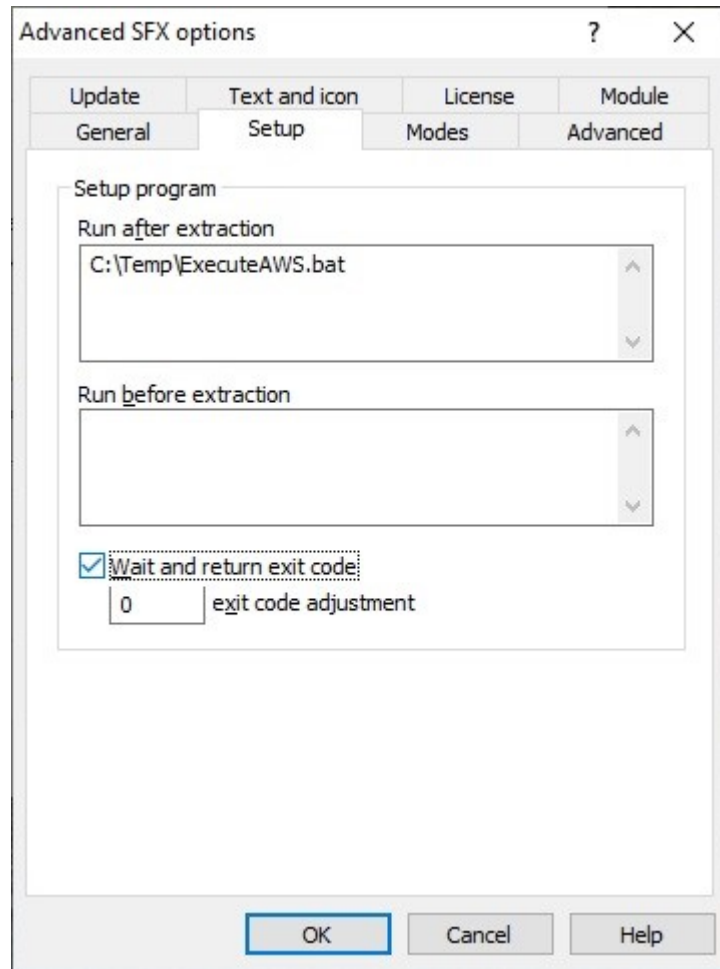


Figure 32. Advance SFX options

- i. Select the **Wait and return exit code** check box.
- j. In the **Advanced** tab, enter the complete path along with the file type to delete in **Files to delete in the destination folder**.

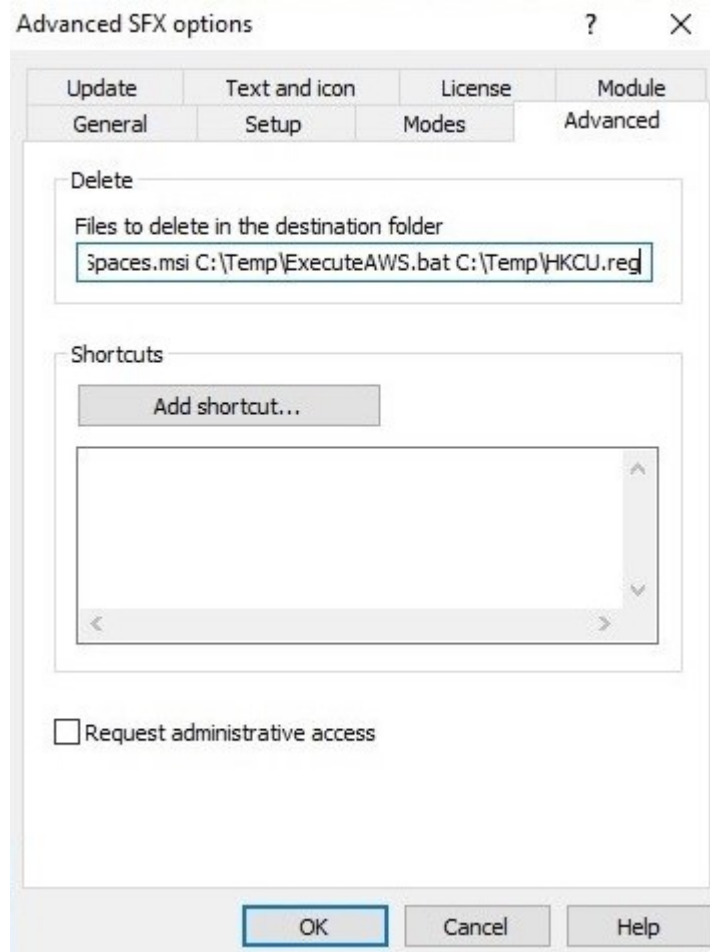


Figure 33. Files to delete

- k. In the **Modes** tab, select the **Hide all** radio button.

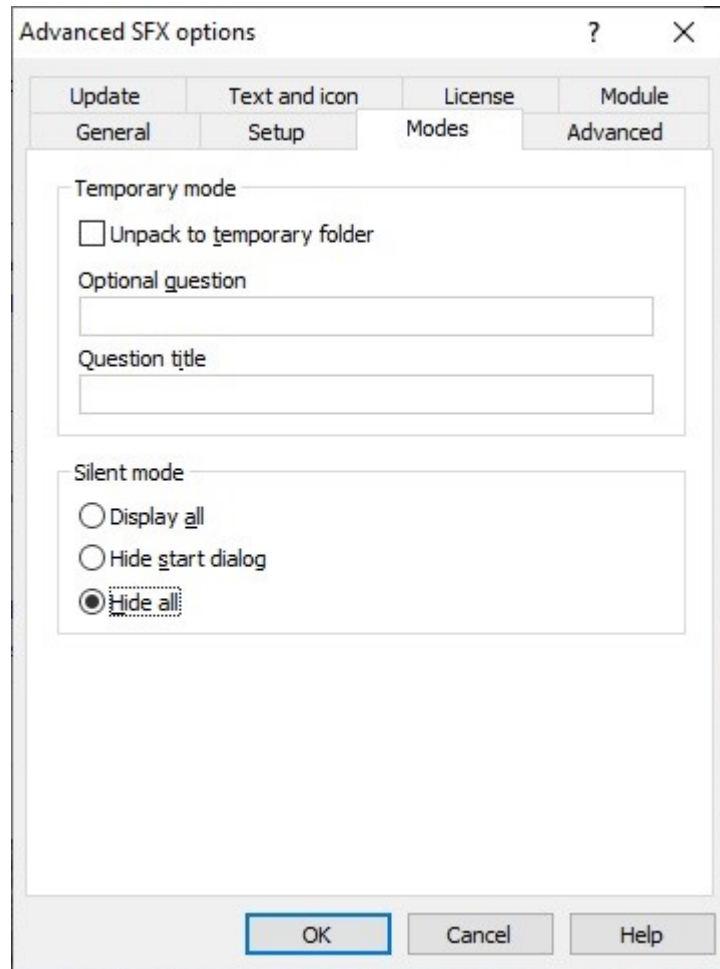


Figure 34. Hide all

- i. Click **OK**.
- m. In the **Archive name and Parameter** tab, go to **Options** and check the **Add for larger file** radio button under **Quick open information**.

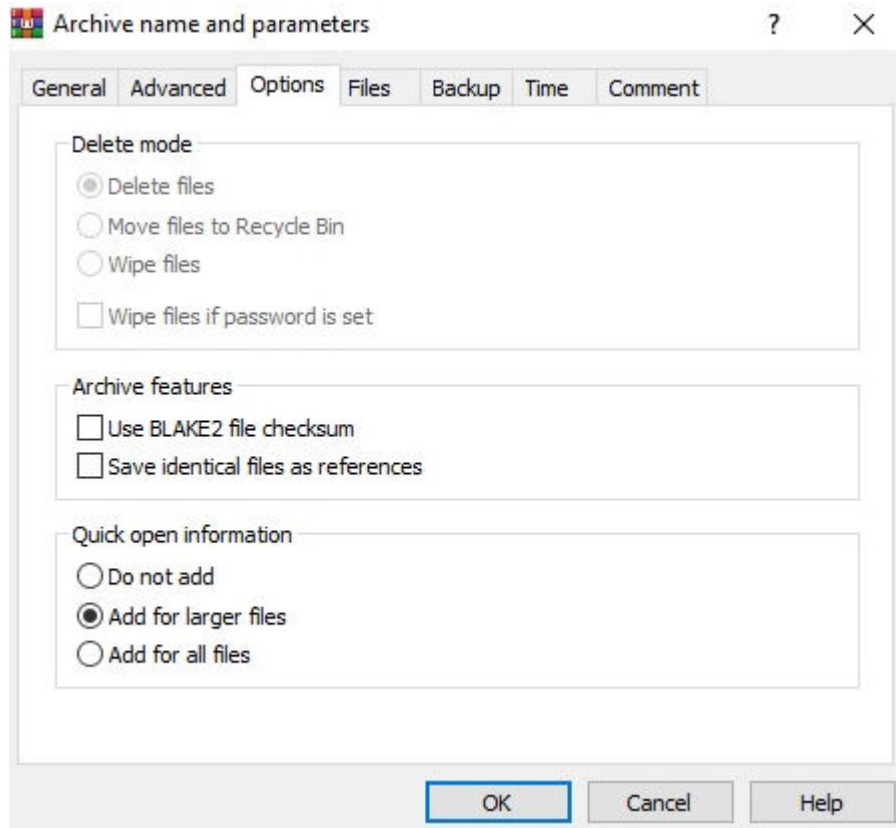


Figure 35. Add for larger files

n. In the **Files** tab, clear the **Files to add** field, and click **Append...** to append all files and click **OK**.

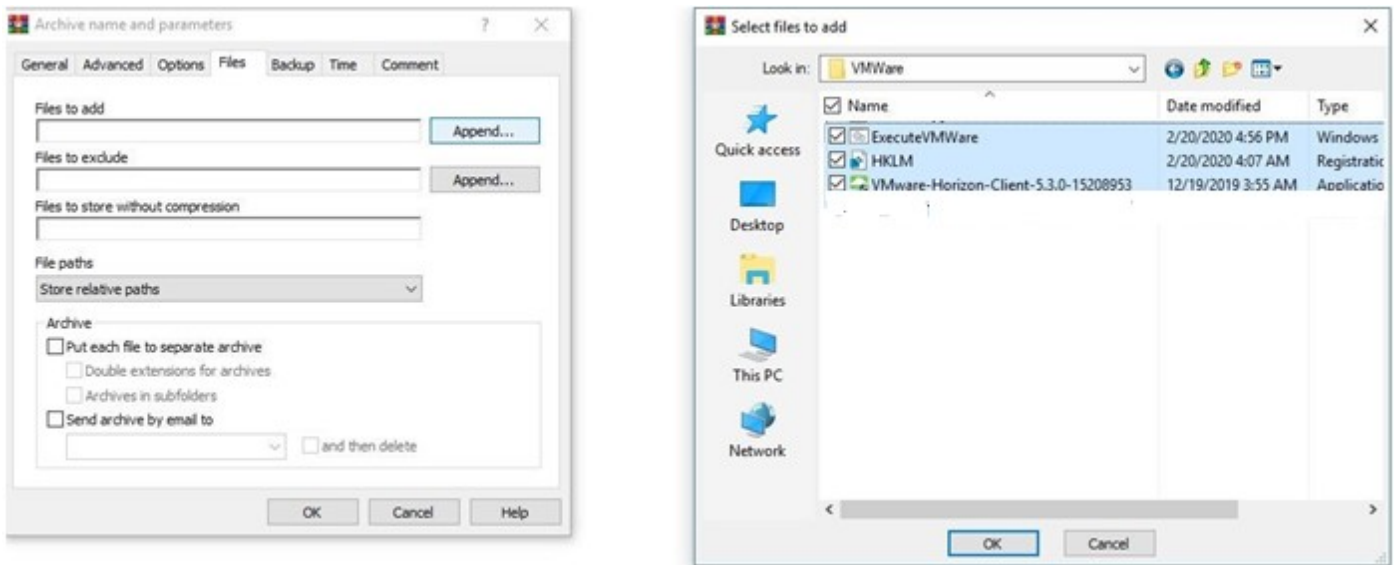


Figure 36. Append files

o. Go to the **Comment** tab, select the content that is mentioned in the **Enter a comment manually** field and click **OK**.

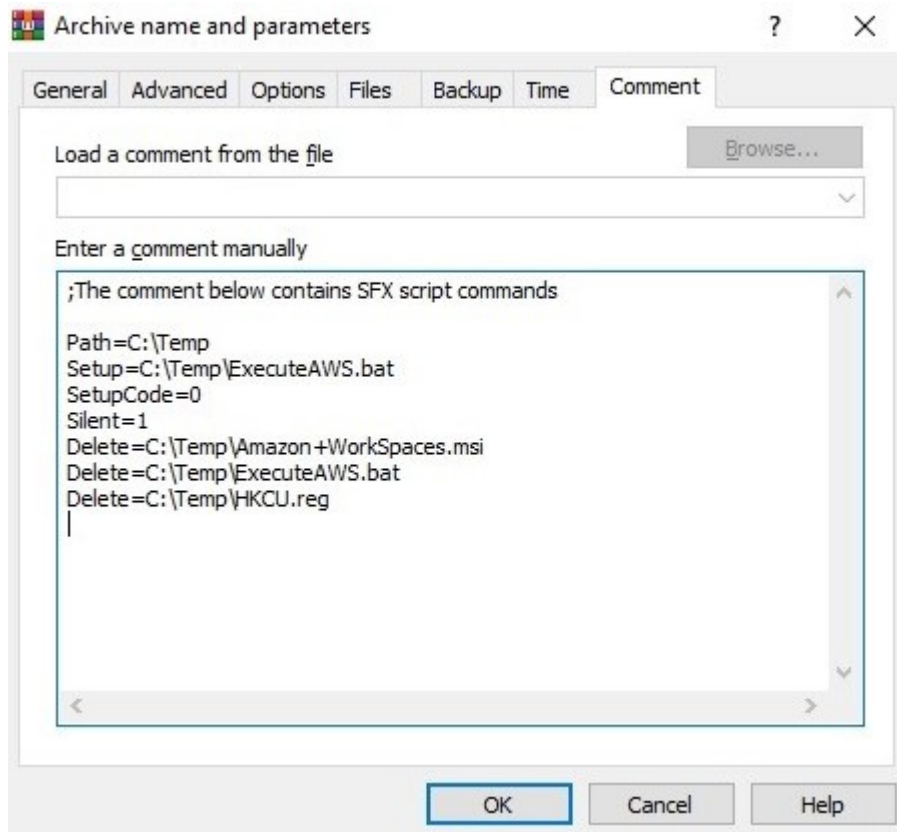


Figure 37. Entering comment manually

Next steps

Install the add-on package using Wyse Management Suite—see [Install add-on package using Wyse Management Suite](#).

Configure group policy settings to disable automatic updates for Amazon WorkSpaces clients

Disable automatic updates for Amazon WorkSpaces on devices with Write Filter enabled. For information about how to turn off automatic updates using group policy settings in an Active Directory environment, see *Windows Server Management documentation* at www.docs.microsoft.com.

Add-on creation for Windows Desktop client packages

Prerequisites

This application installation is supported only from Windows 10 Enterprise 2019 LTSC unified image. Before installing the package, ensure that Write Filter is disabled. If Write Filter is not disabled, it fills the Unified Write Filter Overlay and the updates made are not persistent across reboot.

NOTE: For more information about Windows Desktop client version, see *What's new in the Windows Desktop client* at www.docs.microsoft.com.

Steps

1. Download the Windows Desktop client package. For more information, see *Connect with the Windows Desktop client* at www.docs.microsoft.com.
2. Create a folder named C:\Temp\WDC on your thin client.
3. Copy the Windows Desktop client to the C:\Temp\WDC folder.
4. Copy the following text on a notepad and save the file as ExecuteWDC.bat:

```
@echo
REM
-----
rem Installation of Windows Desktop client
msiexec.exe /i C:\Temp\RemoteDesktop_1.2.1272.0_x64.msi ALLUSERS=1 /qn

REM-----
del C:\Temp\RemoteDesktop_1.2.1272.0_x64.msi
```

For more information about latest updates and examples, see the respective Windows Desktop client release notes.

5. Copy ExecuteWDC.bat to the C:\Temp\WDC folder.

This PC > OS (C:) > Temp > WDC

| Name | Date modified | Type | Size |
|------------------------------|-------------------|-----------------------|-----------|
| ExecuteWDC | 9/8/2020 5:09 AM | Windows Batch File | 1 KB |
| RemoteDesktop_1.2.1272.0_x64 | 9/7/2020 11:07 PM | Windows Installer ... | 18,012 KB |

Figure 38. Package Structure

6. Create a self-extractor package using the following steps:
 - a. Right-click the WDC folder from C:\Temp\ and select **Add to archive**.
 - b. In the **General** tab, click **Create SFX archive**.

NOTE: You can use WinRAR or any available application to create an **SFX** archive.

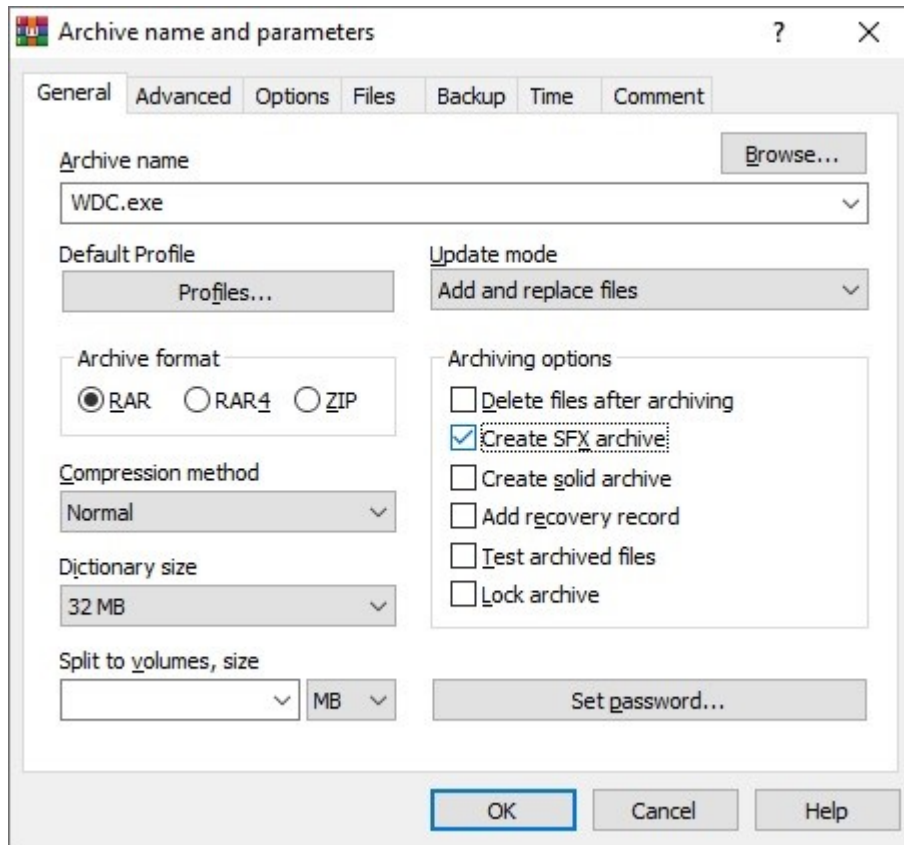


Figure 39. Create an SFX archive

- c. In the **Advanced** tab, click **SFX options** and select **Advanced SFX options**.
- d. In the **General** tab, specify the path to extract C:\Temp and check the **Absolute Path** radio button.

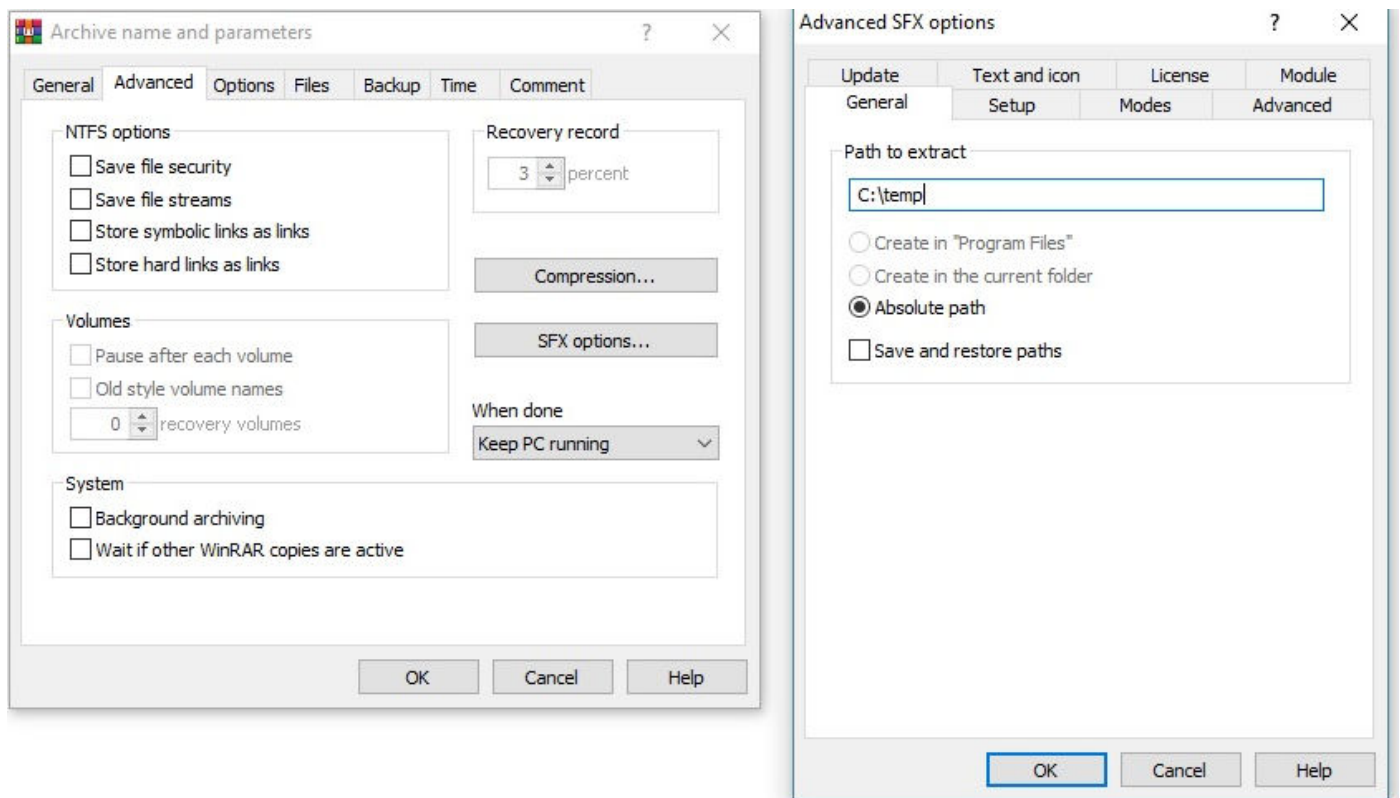


Figure 40. SFX Options

- e. In the **Advanced** tab, click **SFX options** and select **Advanced SFX options**.

- f. Click **Update** and check the **Extract and replace files** radio button under **Update mode**.
- g. Check the **Overwrite all files** radio button under **Overwrite mode**.

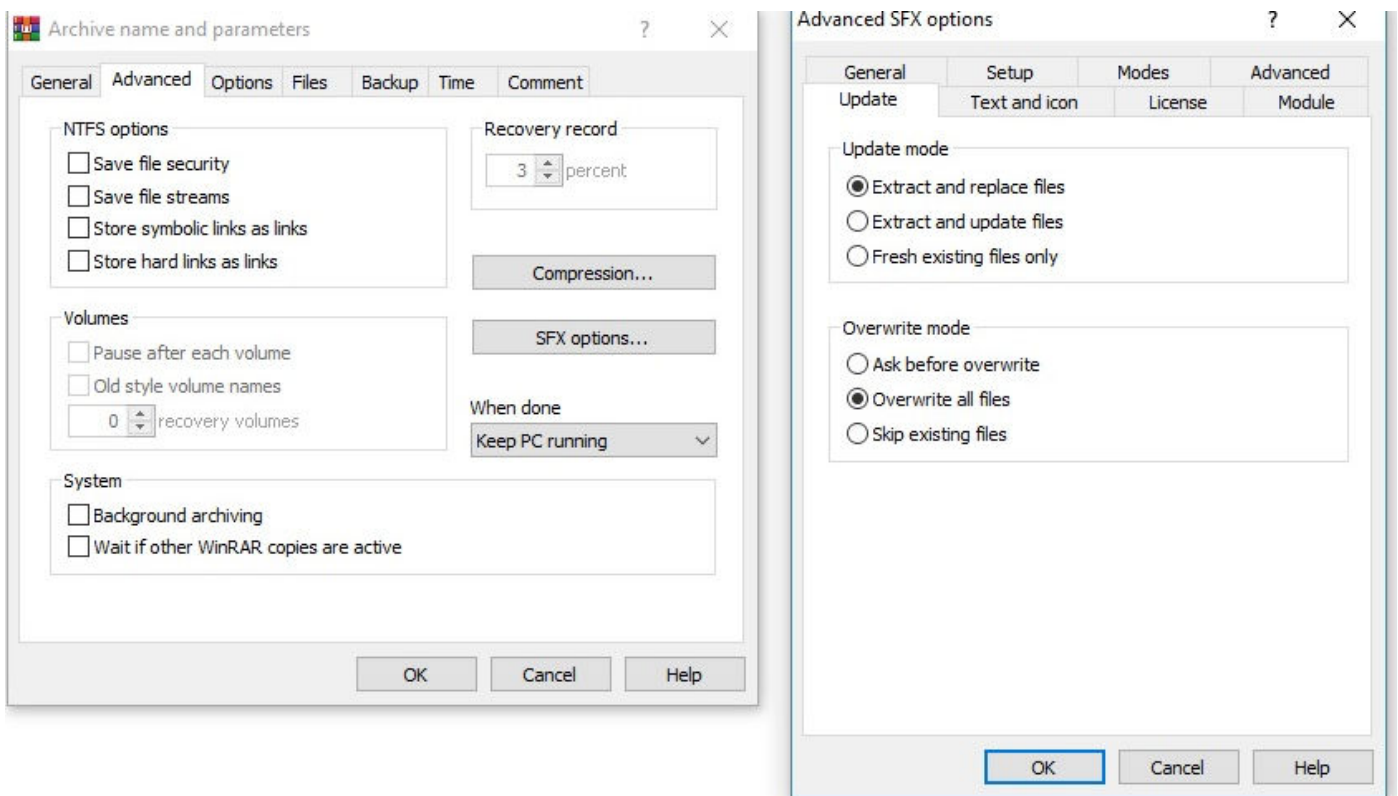


Figure 41. Overwrite all files

- h. In the **Setup** tab, specify the file in the **Run after extraction** field under **Setup program**.

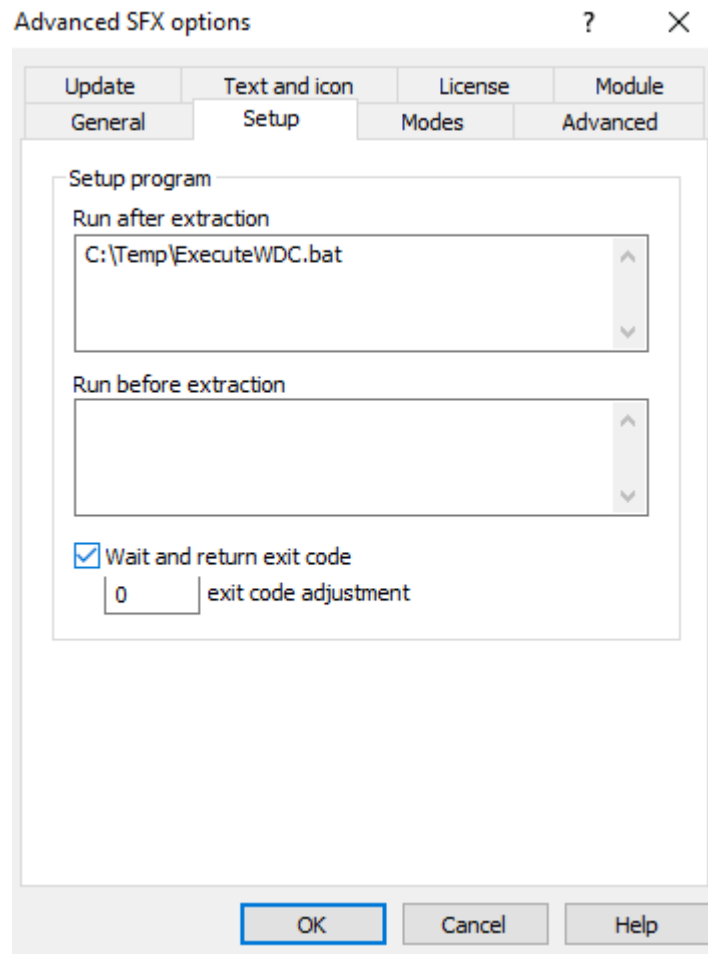


Figure 42. Advance SFX options

- i. Select the **Wait and return exit code** check box.
- j. In the **Advanced** tab, enter the complete path along with the file type to delete in **Files to delete in the destination folder**.

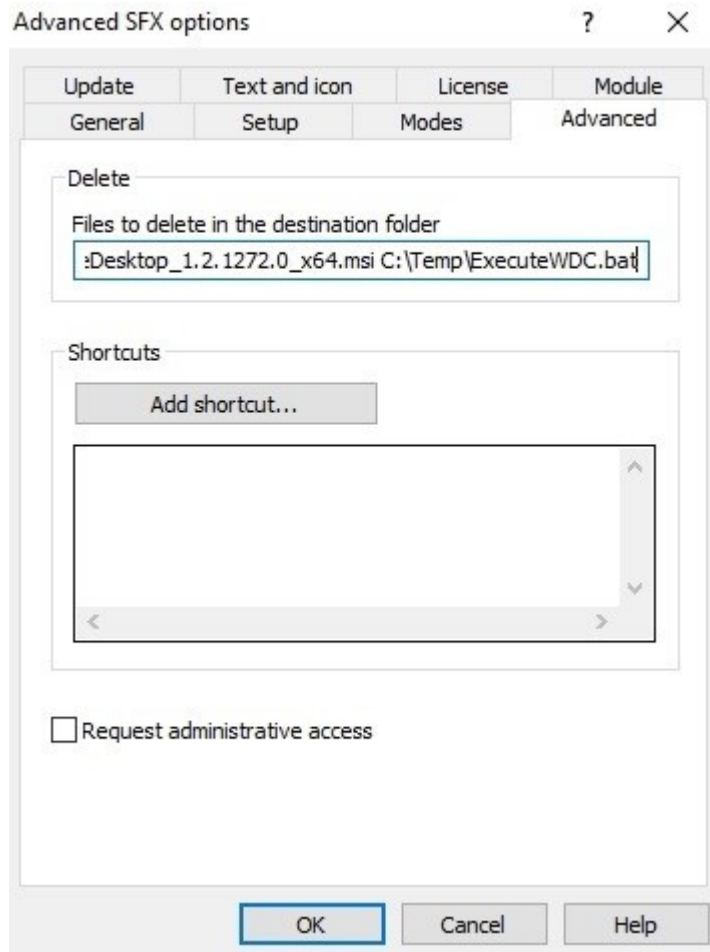


Figure 43. Files to delete

- k. In the **Modes** tab, select the **Hide all** radio button.

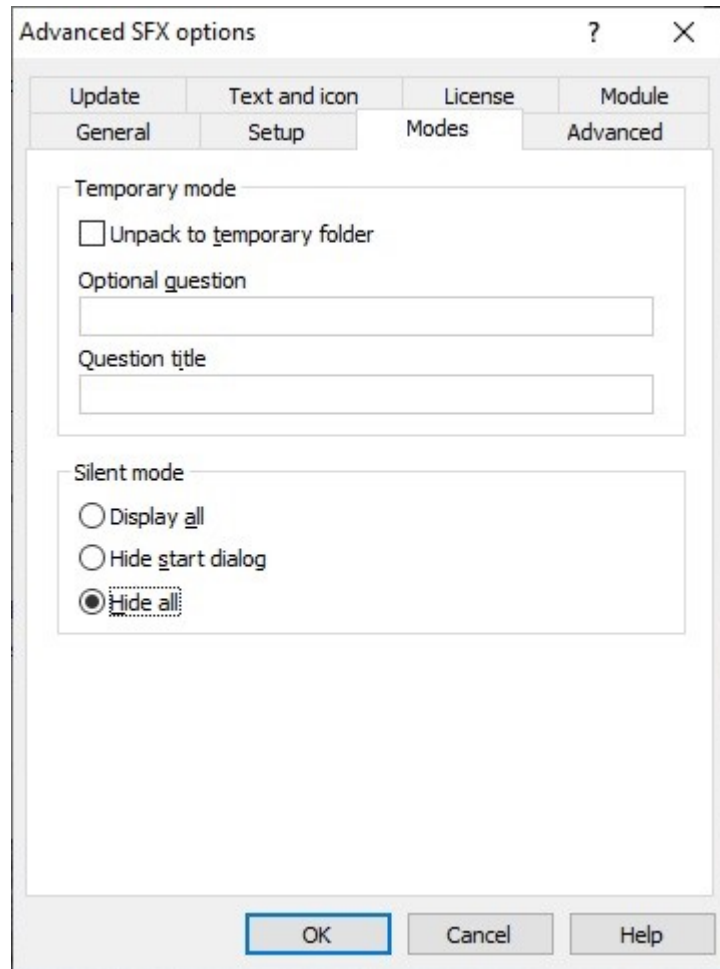


Figure 44. Hide all

- i. Click **OK**.
- m. In the **Archive name and Parameter** tab, go to **Options** and check the **Add for larger file** radio button under **Quick open information**.

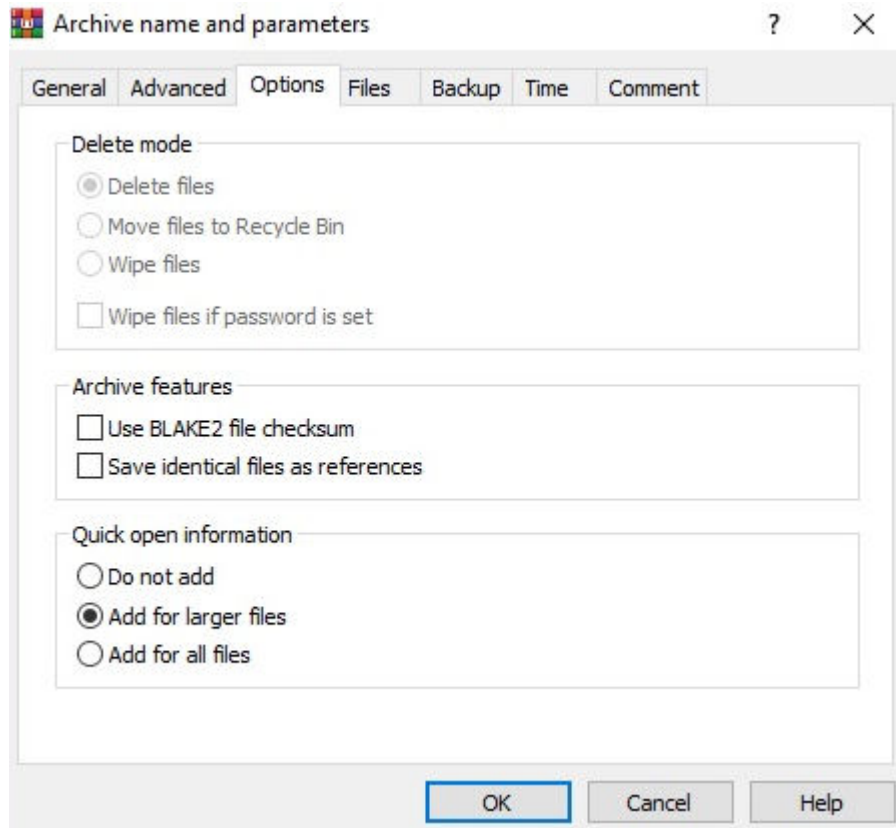


Figure 45. Add for larger files

n. In the **Files** tab, clear the **Files to add** field, and click **Append...** to append all files and click **OK**.

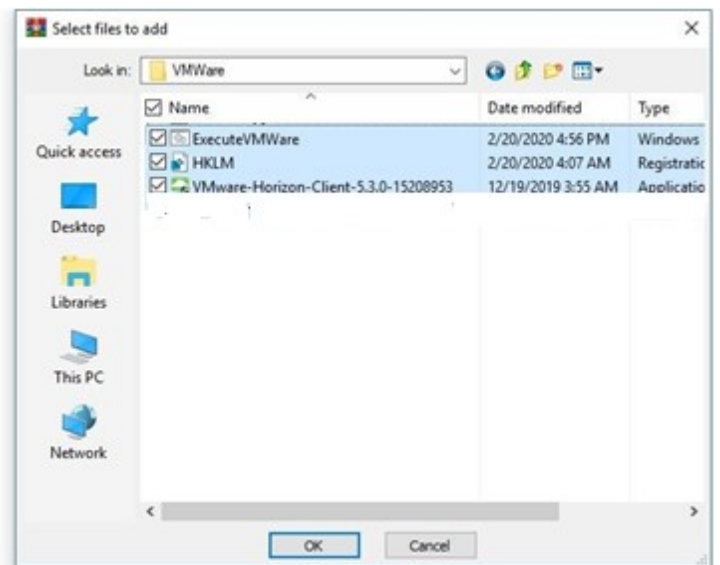
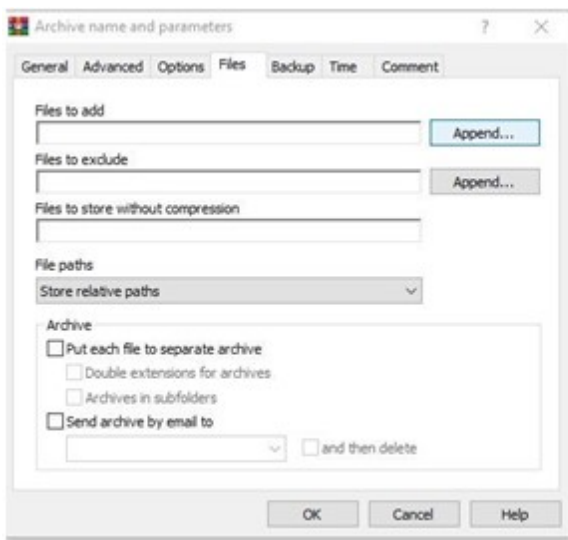


Figure 46. Append files

o. Go to the **Comment** tab, select the content that is mentioned in the **Enter a comment manually** field and click **OK**.

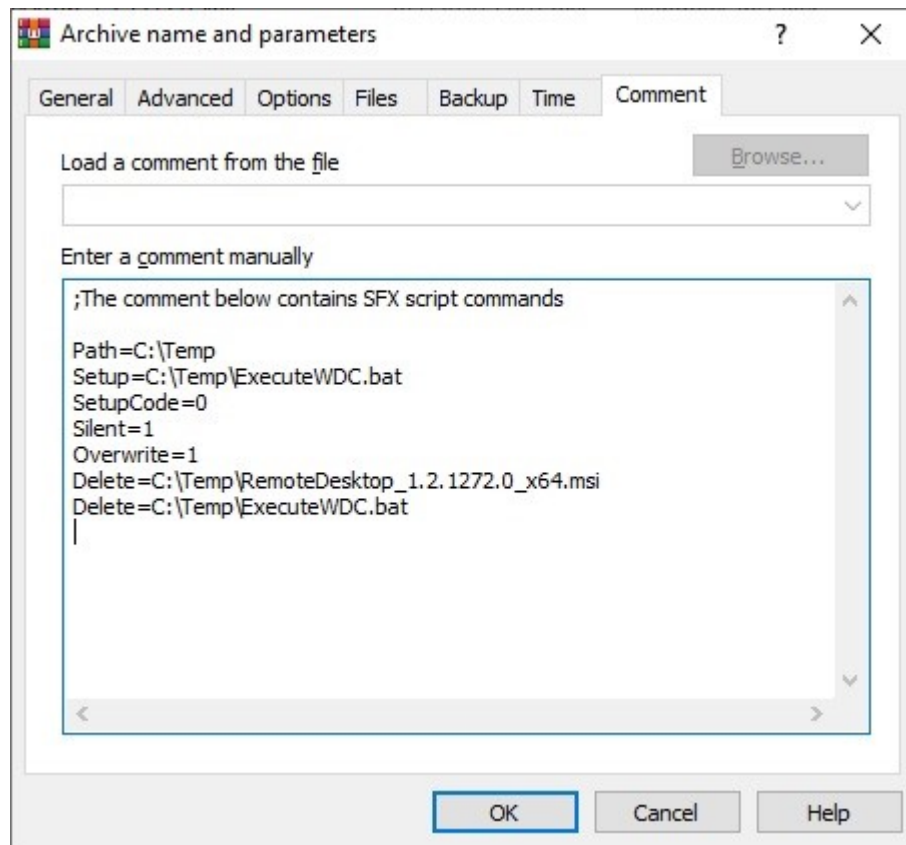


Figure 47. Entering comment manually

Next steps

Install the add-on package using Wyse Management Suite—see [Install add-on package using Wyse Management Suite](#).

VMware Workspace ONE

VMware Workspace ONE is a platform that enables you to manage applications on any device. The platform provides a workspace that includes the devices and applications of the organization's choice. The devices and applications are safeguarded with the necessary security and control. For more information about how to log in to Workspace ONE, see docs.vmware.com and kb.vmtestdrive.com.

Windows Autopilot

Windows Autopilot is used to configure and set up new devices. It helps IT administrators to spend less time installing, recovering, and retiring devices. For more information about how to configure Windows Autopilot devices, see *Windows Autopilot manual* at www.docs.microsoft.com

Install add-on package using Wyse Management Suite

Steps

1. Copy the executable package to Wyse Management Suite repository.
2. Log in to Wyse Management Suite.
3. Click **Portal Administration**, and then click **File Repository** under **Console Settings**.
4. Check the **Local Repository** radio button.
5. Click **Sync Files** and wait for the synchronization process to complete.
6. Click **Apps and Data** and verify the copied package in the applications list.
7. Click **Groups & Configs** to create a group in Wyse Management Suite.
8. Click the (+) button and enter the required details to register your client in the same group.
9. Click **Apps and Data** and go to **Thin Clients** under **App Policies**.
10. Click **Add Policy** to add the policy to the required group.
11. Update the required fields and click **Save**.
12. Click **Yes** to deploy the policy immediately.
13. Go to **App Policy** and update the description.
14. Click **Run**.

For more information, see the Wyse Management Suite manuals at <https://www.dell.com/support/home/en-us/product-support/product/wyse-wms/docs>.

Contacting Dell

Dell provides several online and telephone-based support and service options. Availability varies by country and product, and some services may not be available in your area. To contact Dell for technical support or customer service issues, see www.dell.com/contactdell.

If you do not have an active Internet connection, you can find contact information on your purchase invoice, packing slip, bill, or the product catalog.