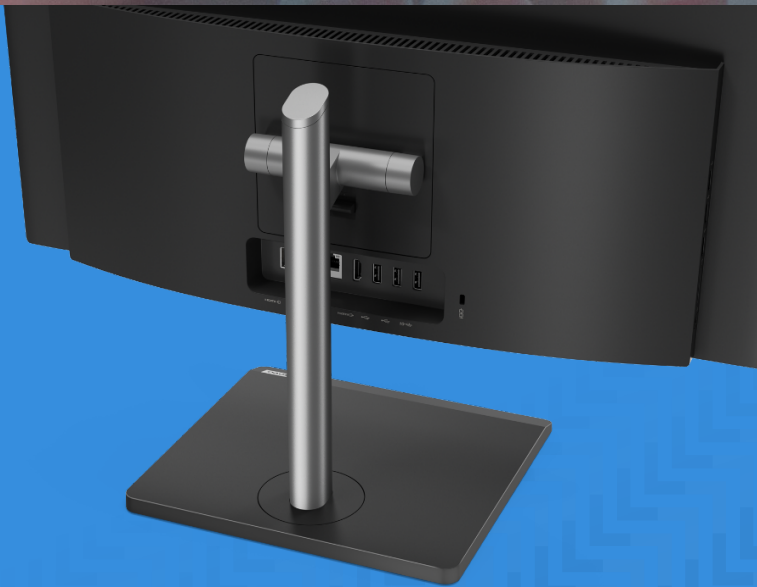




MAINSTREAM COMPUTING FOR A VARIETY OF BUSINESS USES



Stylish, space-saving and packed with productivity features, Lenovo V Series All-in-Ones include rotating webcams, adjustable stands and non-reflective screens.

Lenovo V30a 24IIL

Smarter
technology
for all

Lenovo

This 23.8" all-in-one, with up to 10th Gen Intel® Core processors, will modernize any space with its sleek design and anodized aluminum stand. It includes a low blue-light mode which reduces eye fatigue, and an optional camera with privacy cover. It supports both Amazon Alexa and Microsoft Cortana voice assistants, enabling busy users to interact hands-free with the device, for example to look up information, or have emails read aloud.



REASONS TO BUY

Lenovo Shield gives system administrators new ways to manage data, including the ability to disable specific USB ports, set up HDD passwords, and quickly perform a 100% data wipe on an installed drive – useful when the device is being recycled or transferred to another user.

The Smart Conference feature detects the number of people in front of the computer and optimizes the audio experience; either minimizing background noise or detecting voices from multiple directions.

Optimized to reduce energy costs and minimize noise with Energy Star 8.0, EPEAT™ Silver and Ultra Low Noise certifications.

Lenovo V30a 24IIL

KEY SPECIFICATIONS

Processor	up to 10th Gen Intel Core i5 processor
Operating System	Powered by Windows 10 Pro
Display	23.8" Full HD (1920x1080) screen, IPS, 1000:1 contrast ratio
Graphics	Intel UHD Graphics in processor
Memory	up to 16GB DDR4-3200
Storage	Internal storage: up to 1x 2.5" 1TB SATA HDD M.2 SSD: up to 1x 512GB M.2 PCIe NVMe
Camera	720p
Audio	2x 3W stereo speakers Dual Digital microphone
Power Supply	65W 88% Adapter
Dimensions	Width: 541mm (21.3") Depth: 214mm (8.4") Height: 449mm (17.67")
Weight	starting at 6.4kg (14.1lb)

GREEN CERTIFICATIONS

Energy Star 8.0. EPEAT Silver.

OTHER CERTIFICATIONS

Low Blue Light certified. Ultra Low Noise certified.

CONNECTIVITY

Side/Front I/O	Side: 1x USB 3.2 Gen 1, 2x USB 2.0, 1x audio combo jack (3.5mm), 3-in-1 card reader
Rear I/O	1x USB 3.2 Gen 1, 2x USB 2.0, ethernet (RJ-45), HDMI-in, HDMI-out
WLAN + Bluetooth	One of the following Intel 9560 11ac, 2x2 + BT5.0 RTL8822CE 11ac, 2x2 + BT5.0
Ethernet	Integrated 100/1000M

SECURITY & PRIVACY

Camera privacy cover
Firmware TPM
Kensington lock slot
Lenovo Shield
Smart USB protection

Information presented here may represent the maximum possible configurations for this product, but it does not necessarily reflect what is available in your region. Please ask your rep or check the specifications for specific Part Numbers in your region. © 2020 Lenovo. Products are available while supplies last. Lenovo is not responsible for photographic or typographic errors. Lenovo, the Lenovo logo, ThinkPad, ThinkCentre, ThinkBook, ThinkStation and ThinkVision are trademarks or registered trademarks of Lenovo. 3rd party product and service names may be trademarks of others. Depending on factors such as the processing capability of peripheral devices, file attributes, system configuration and operating environments, the actual data transfer rate of USB connectors will vary and is typically slower than published standards.

Recommended for this device



Lenovo Desktop Privacy Filter from 3M

Patented microlouver technology darkens the screen at specific angles to protect against visual hackers

Available in a range of sizes. Includes adhesive strips for easy residue-free removal and multiple on-and-off uses

Reduces glare from bright computer screens and overhead lights



Lenovo Kensington MicroSaver Cable Lock

Cut-resistant cable lock to protect against device theft; 5ft/1.5m cable anchors to desk, table or any fixed structure

Tamper-resistant, disk-style lock provides near-impenetrable theft protection, but still allows users to pivot and rotate devices

Fits a wide range of devices and docking solutions based on the Kensington slot design. Dual head locks available to secure 2 devices to one cable



On-site Service

If a problem can't be fixed remotely, we will visit your location

Normally next business day service

Agreed appointment times