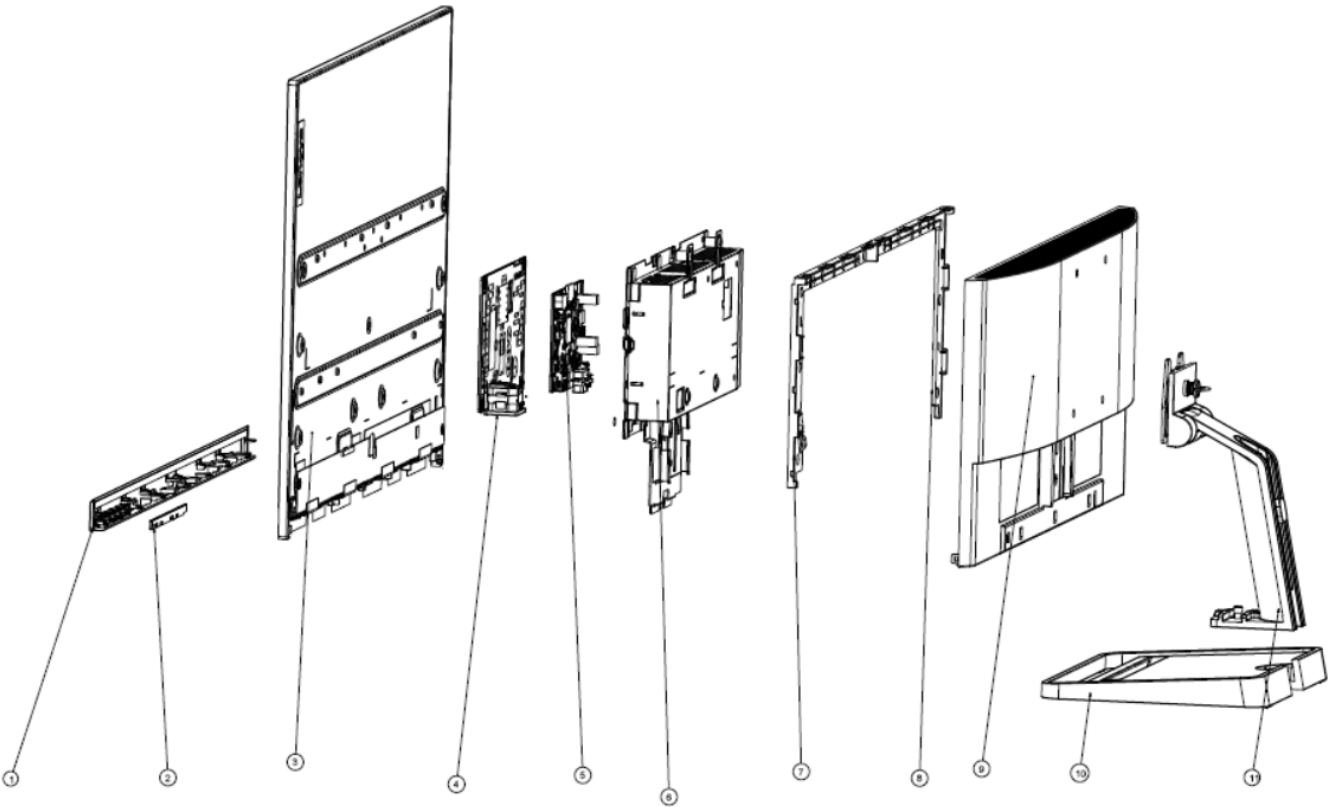


L24i-30 Simplified service manual for dismantling

Model Name: Lenovo L24i-30

Exploded Diagram



ITEM	PART NO.	PART NAME	Q'ty	Remark
A	6	PCBA SCREW	1	
B	2	VGA SCREW	1	
C	10	INSIDE MIDDLE COVER SCREW	1	
D	4	CHASSIS SCREW	1	

ITEM	PART NO.	PART NAME	Q'ty	Remark
1	0000000000	CHIN ASSY	1	
2	0000000000	FUNCTION KEY BD	1	
3	0000000000	PANEL	1	
4	0000000000	POWER BD	1	
5	0000000000	IF BD	1	
6	0000000000	CHASSIS ASSY	1	
7	0000000000	INSIDE MIDDLE COVER LEFT	1	
8	0000000000	INSIDE MIDDLE COVER RIGHT	1	
9	0000000000	REAR COVER ASSY	1	
10	0000000000	STAND ARM	1	
11	0000000000	STAND BASE	1	

1. Precaution

Please read the precaution as follows to prevent any damages to the LCD Monitor.

Make sure all power connector is removed. Be sure that the LCD Monitor is in power off status.

Prepare soft cloth and sponge as working platform to place LCD monitor horizontally.



Hold LCD by the side carefully and DON'T touch or press panel directly.





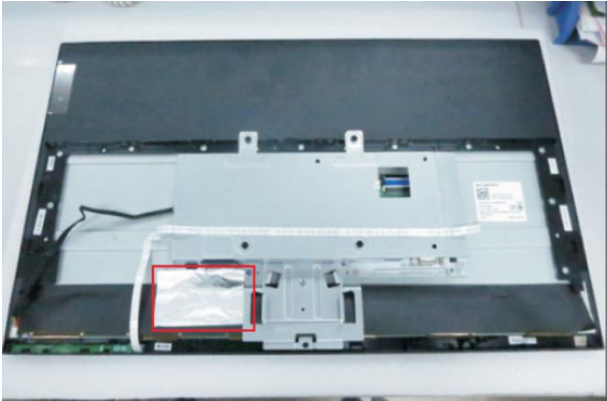
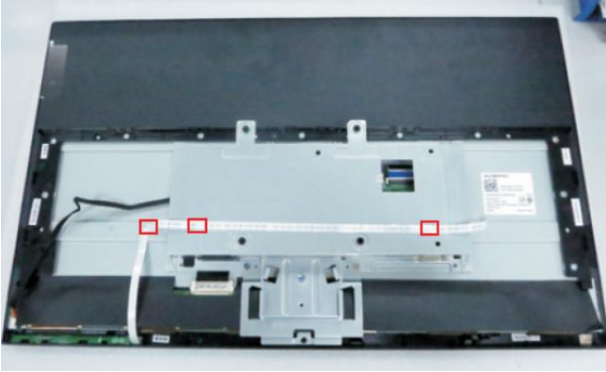
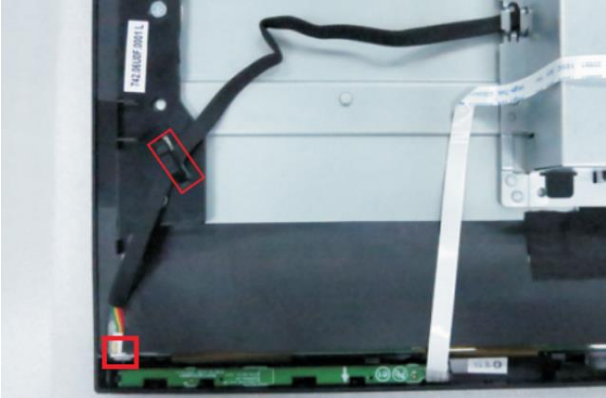
2. Appropriate tools

Select the Appropriate tools for disassembly and re-assembly.

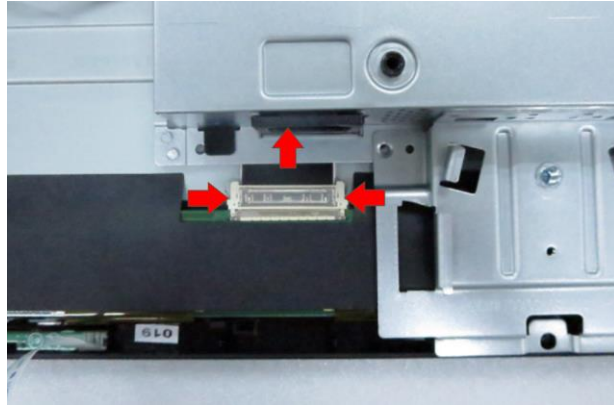
Phillips screwdriver (#2)	
spacer screwdriver	
C/D disassembly tool	
Gloves or soft cloth	

3. Disassembly SOP

<p>Put the monitor on a flat surface (Put the EPE on under the monitor)</p>	
<p>Remove the screw * 1pcs and pull out the stand base Tool : Screwdriver #2</p>	
<p>Remove the screw * 1pcs Tool : Screwdriver #2</p>	
<p>Use the C/D disassembly tool to release Rear cover hook from disassemble hole on bottom</p>	

<p>Remove the rear cover</p>	
<p>Remove All tape and foil</p>	
<p>Unplug key cable and release key cable</p>	
<p>Unplug light bar cable and release light cable from hook of middle frame</p>	

Unplug LVDS cable from the panel connector

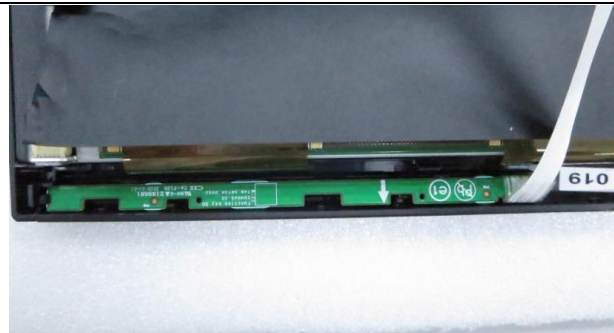


Remove All screw to release middle frame (left & right) and main chassis.

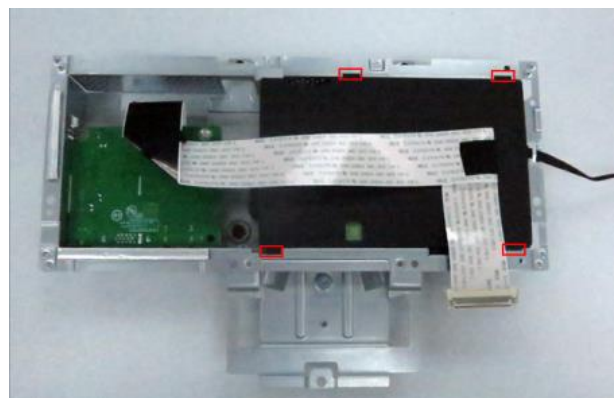
Tool: Screwdriver #2



Release the keypad PCB from the hook of the front bezel



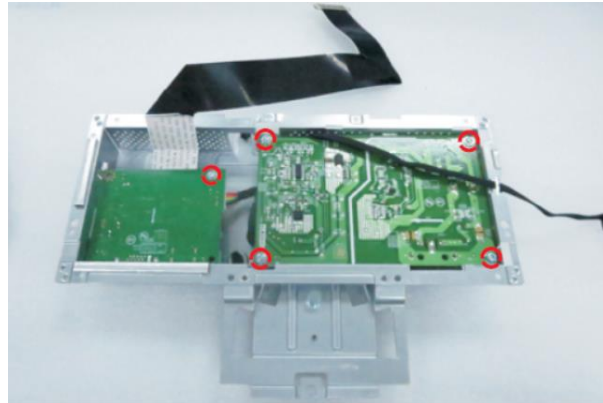
Take out the mylar sheet from Main chassis



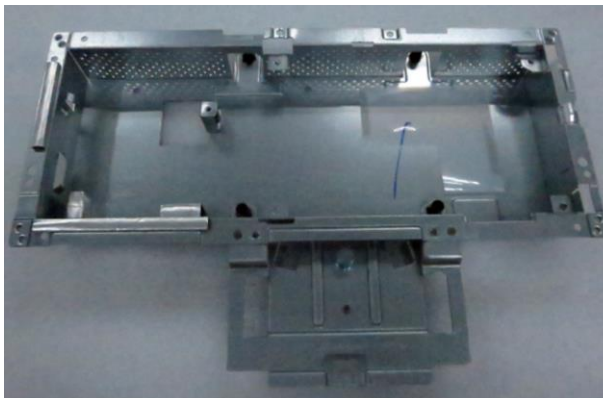
Remove All screw.

Tool : Screwdriver #2

Tool : spacer screwdriver



Take out PCB and peel off all mylar.



Take out the Thermal pads from Power PCB

