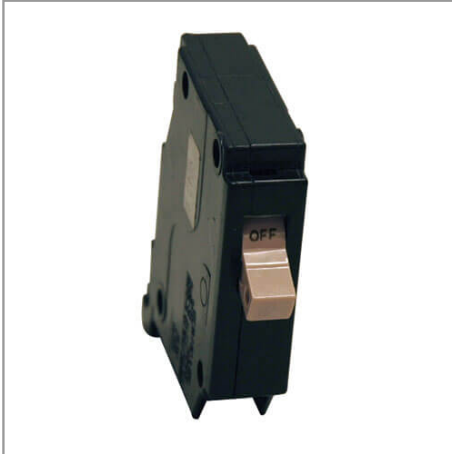


120V 30A Single Phase Circuit Breaker for Rack Distribution Cabinet Applications

MODEL NUMBER: **SUBB130**



Highlights

- Circuit breaker for SUDC208VP distribution cabinet applications
- Single Phase Cutler Hammer 120V 30A Single Pole

Description

Cutler Hammer single phase 120V 30A single pole circuit breaker for use with Tripp Lite SUDC208VP rack distribution cabinet applications

Features

- Cutler Hammer single phase 120V 30A single pole circuit breaker
- For use with Tripp Lite SUDC208VP rack distribution cabinet applications

Specifications

OVERVIEW	
UPC Code	037332177223
Product Type	Circuit Breaker
Accessories Type	Circuit Breaker
INPUT	
Rated input current (Maximum Load)	30A
Nominal Input Voltage(s) Supported	120V AC
PHYSICAL	
Shipping Dimensions (hwd / cm)	22.86 x 17.78 x 1.90
Shipping Dimensions (hwd / in.)	9.00 x 7.00 x 0.75



Tripp Lite
1111 W. 35th Street
Chicago, IL 60609 USA
Telephone: 773.869.1234
www.tripplite.com

Shipping Weight (kg)	0.14
Shipping Weight (lbs.)	0.30
Unit Dimensions (hwd / cm)	8.3 x 8.3 x 1.9
Unit Dimensions (hwd / in.)	3.25 x 3.25 x .75
Unit Weight (kg)	0.10
Unit Weight (lbs.)	.225
WARRANTY	
Product Warranty Period (Worldwide)	1-year limited warranty

© 2021 Tripp Lite. All rights reserved. All product and company names are trademarks or registered trademarks of their respective holders. Use of them does not imply any affiliation with or endorsement by them. Tripp Lite has a policy of continuous improvement. Specifications are subject to change without notice. Tripp Lite uses primary and third-party agencies to test its products for compliance with standards. See a list of Tripp Lite's testing agencies: <https://www.tripplite.com/products/product-certification-agencies>