

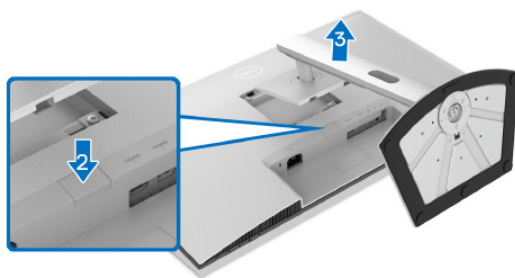
1. Disassembly Procedures

S1 Turn off the monitor.

S2 Place the monitor on a soft cloth or cushion.

Press and hold the stand release button at the back of the display.

Lift the stand assembly up and away from the monitor.

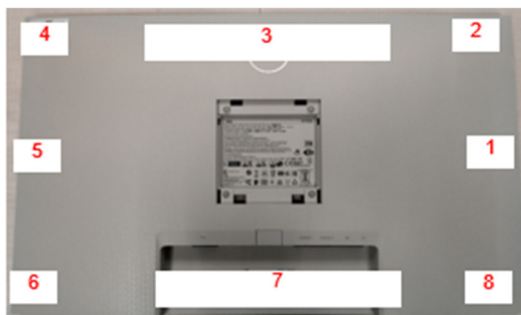


S3 Unlock 4 screws on Rear Cover



(Screw Torque: 8.5 ± 1.0 kgf)

S4 Follow the sequence to disassemble Rear Cover from the monitor



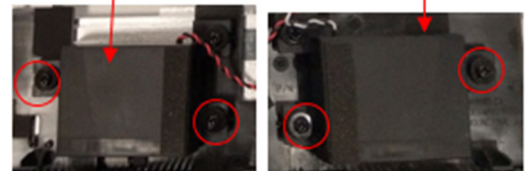
S5 Tear off all adhesive tapes from backlight wire and speaker wire



S6 Pull out speaker wire from I/F BD

Unlock 4 speaker screws

Disassemble speaker from Middle Frame

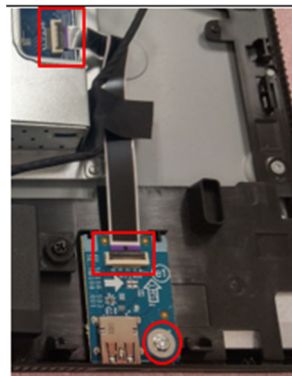


(Screw Torque: 4~6kgf)

S7 Disassemble USB-FFC wire from USB BD and I/F BD

Unlock 1 USB screw

Disassemble USB BD from Middle Frame



(Screw Torque: 2~4kgf)

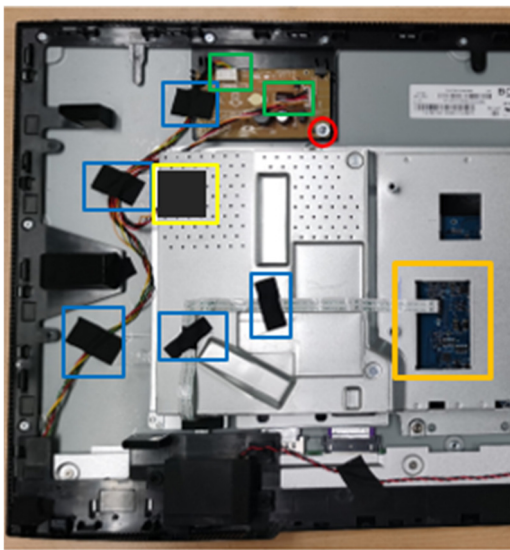
S8 Tear off tapes from backlight wire and CTRL FFC (See blue marks)

Tear off small mylar from Main SHD
(See yellow mark)

Pull out CTRL FFC from I/F BD and tear off it from Main SHD (See orange mark)

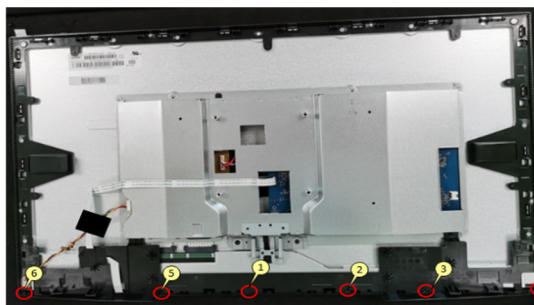
Pull out backlight wire and SPS BD wire from LED DRV BD (See green mark)

Unlock 1 screw on LED DRV BD and disassemble LED DRV BD from Middle Frame (See red mark)



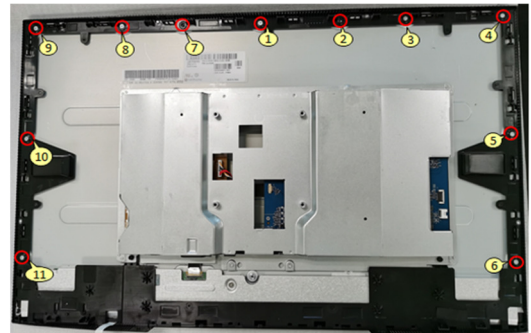
(Screw Torque: 2~4kgf)

S9 Unlock 6 "ASSY DECO" screws



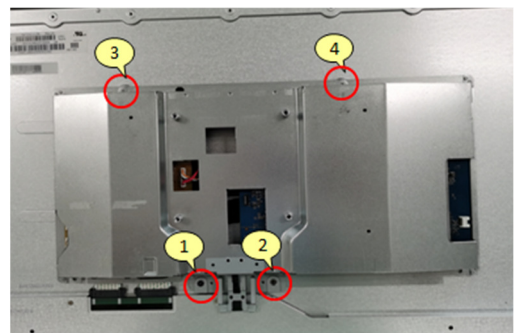
(Screw Torque: 1.5~2.5kgf)

S10 Unlock 11 Middle Frame screws



(Screw Torque: 4~5kgf)

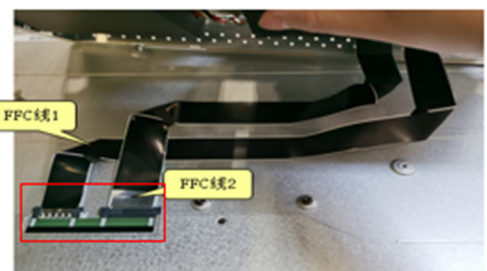
S11 Unlock 4 Main SHD screws



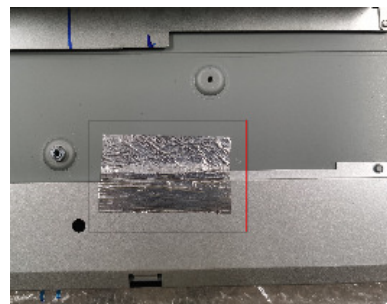
(Screw Torque: 4~5kgf)

S12 Pull out FFC LVDS from Panel

Take off Main SHD from Panel

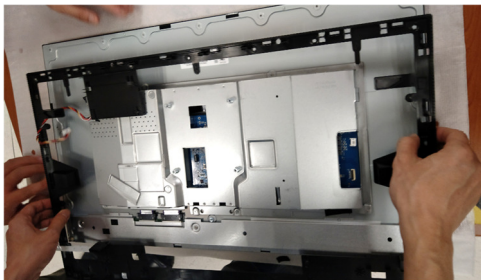


S13 Tear off a piece of aluminum foil from panel

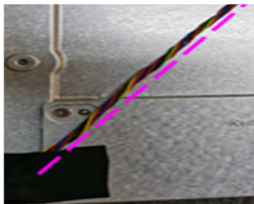


S14 Disassemble Middle Frame and "ASSY DECO" from panel

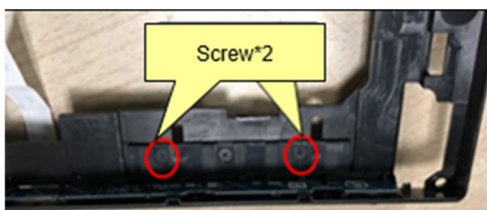
Take off "ASSY DECO" from Middle Frame



S15 Tear off an adhesive tape from backlight wire and pull out backlight wire from Panel



S16 Unlock 2 screws on CTRL BD



(Screw Torque: 1.5~2.5kgf)

S17 Tear off CTRL BD FFC from Middle Frame



S18 Disassemble CTRL BD from OSD BTN

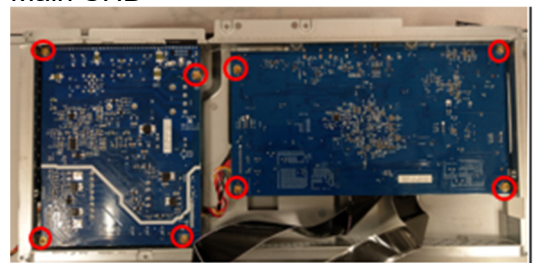


S19 Disassemble Safety Mylar from SPS BD



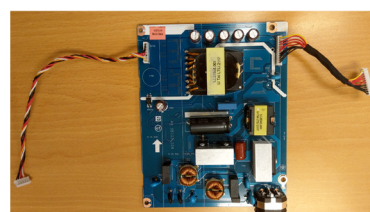
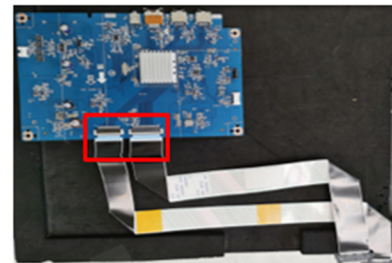
S20 Unlock 8 PCBA screws

Disassemble I/F BD & SPS BD from Main SHD



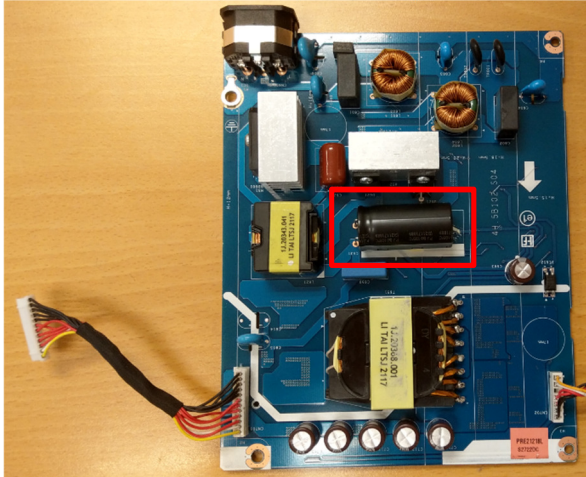
(Screw Torque: 6~7kgf)

S21 Pull out FFC LVDS from I/F BD
Pull out SPS BD wire from SPS BD

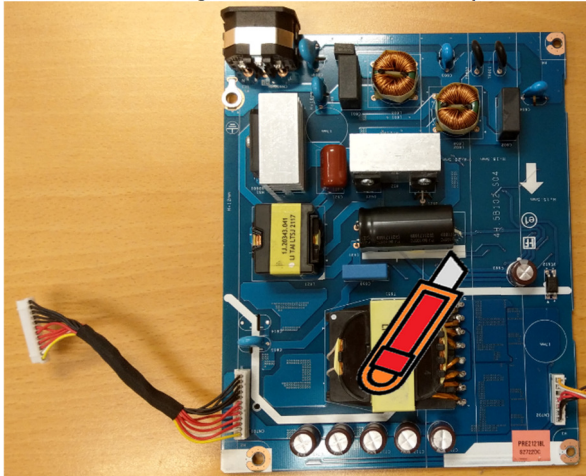


S22

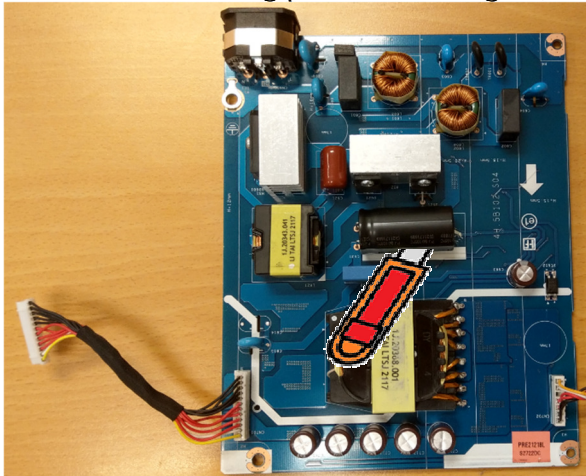
Remove electrolyte capacitors (red mark) from printed circuit boards



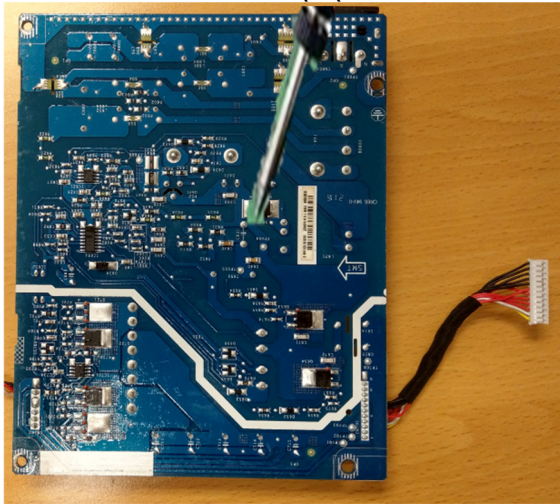
S22-1 Cut the glue between bulk cap. and PCB with a knife



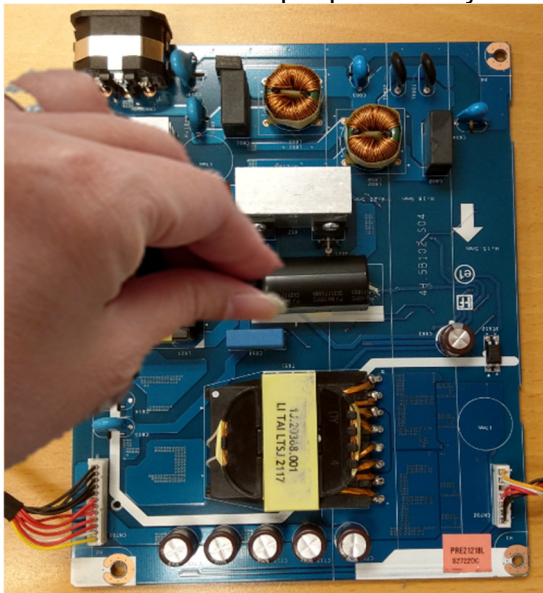
S22-2 Ensure cutting path within the glue, don't touch bulk cap. or PCB



S22-3 Take out bulk cap. pin solder with soldering iron and absorber



S22-4 Lift the bulk cap. up and away from the PCB



2. Product material information

The following substances, preparations, or components should be disposed of or recovered separately from other WEEE in compliance with Article 4 of EU Council Directive 75/442/EEC.

Capacitors / condensers (containing PCB/PCT)	No used
Mercury containing components	No used
Batteries	No used
Printed circuit boards (with a surface greater than 10 square cm)	Product has printed circuit boards (with a surface greater than 10 square cm)
Component contain toner, ink and liquids	No used
Plastic containing BFR	No used
Component and waste contain asbestos	No used
CRT	No used
Component contain CFC, HCFC, HFC and HC	No used
Gas discharge lamps	No used
LCD display > 100 cm ²	Product has an LCD greater than 100 cm ²
External electric cable	Product has external cables
Component contain refractory ceramic fibers	No used
Component contain radio-active substances	No used
Electrolyte capacitors (height > 25mm, diameter > 25mm)	Product has electrolyte capacitors (height >25mm, diameter > 25mm)

3. Tools Required

List the type and size of the tools that would typically can be used to disassemble the product to a point where components and materials requiring selective treatment can be removed.

Tool Description:

- Screwdriver
- Scraper Bar
- Penknife
- Soldering iron and absorber