

# SpacePole TabPrint Curve - Flat mount for TabPrint - 32

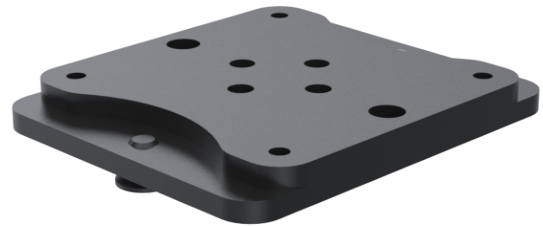
SPTPC401-32



SpacePole TabPrint Curve - Flat mount

Flat mount for second screen, designed for use with TabPrint Curve products

Compatible with a range of TabPOS® mounts for flexible integration  
5-year warranty



## Product Specifications

<b>Colour Name</b>	White
<b>Colour Type</b>	Structured
<b>Main material</b>	Metal
<b>Product Version</b>	1.0
<b>Height adjustable?</b>	No
<b>Lock Type</b>	Screws
<b>Mounting</b>	DuraTilt with MultiGrip
<b>Mounting Type</b>	Counter
<b>Units per Box</b>	1
<b>Unit Weight</b>	0.11 kg
<b>Box Weight</b>	0.13 kg
<b>Warranty</b>	5 Years

## Product Dimensions

<b>Unit Depth</b>	60 mm
<b>Unit Height</b>	8.5 mm
<b>Unit Weight</b>	0.11 kg

## Package Dimensions

<b>Box Depth</b>	110 mm
<b>Box Height</b>	59 mm
<b>Box Width</b>	63 mm



Made in the EU

[www.ergonomic.solutions](http://www.ergonomic.solutions)