

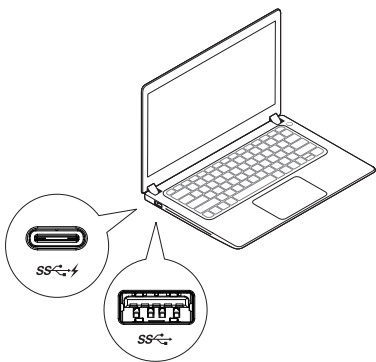
# Dell™ Universal Dock

D6000S

## Quick Start Guide



- 1 **NOTE: Install the drivers first before connecting the Docking Station to your computer.**



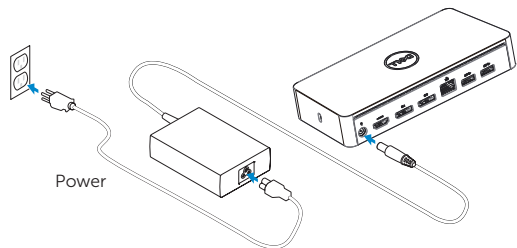
Driver download links:

- [www.dell.com/support/drivers](http://www.dell.com/support/drivers)
- [www.displaylink.com/downloads](http://www.displaylink.com/downloads)

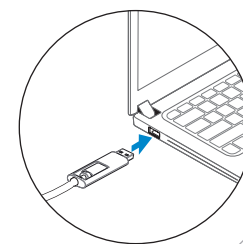
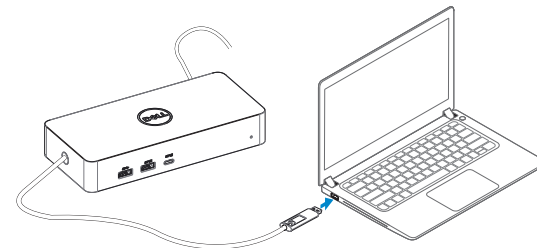
Corporate installation software package:

[www.displaylink.com/downloads/corporate](http://www.displaylink.com/downloads/corporate)

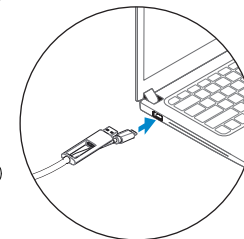
- 2



- 3 Choose USB-A or USB-C connector for laptop connection

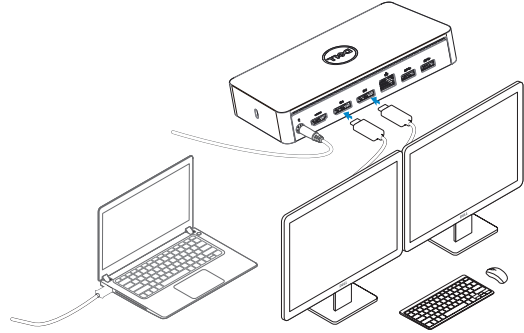


USB-A



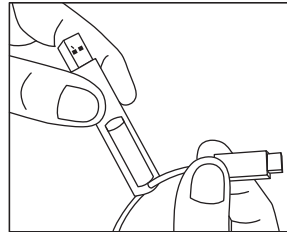
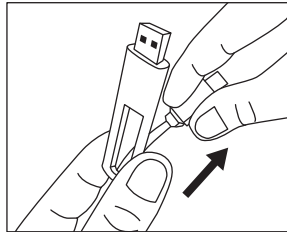
USB-C

4

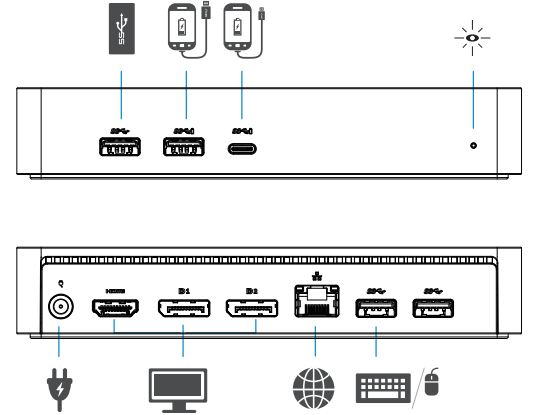


USB-C notebook supports maximum 3 displays.  
 USB-A notebook supports maximum 2 displays.

### How to interchange USB-C and USB-A connection



### Features



[www.dell.com/support](http://www.dell.com/support)  
[www.dell.com/support/drivers](http://www.dell.com/support/drivers)  
[www.dell.com/contactdell](http://www.dell.com/contactdell)  
[www.dell.com/regulatory\\_compliance](http://www.dell.com/regulatory_compliance)

Regulatory model : D6000S



Dell P/N : 7968F A00  
 © 2021 Dell Inc.

Printed in China.  
 2021-07

- NOTE: For more information, see User's Guide at [www.dell.com/support](http://www.dell.com/support)
- NOTE: The latest drivers update can be downloaded from the DisplayLink support website at [www.displaylink.com/downloads/corporate](http://www.displaylink.com/downloads/corporate)
- NOTE: For network/IT administrators, please visit this link for a corporate installation software package. (\*User registration required)  
[www.displaylink.com/downloads/corporate](http://www.displaylink.com/downloads/corporate)