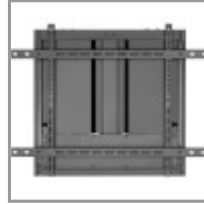
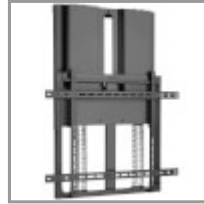
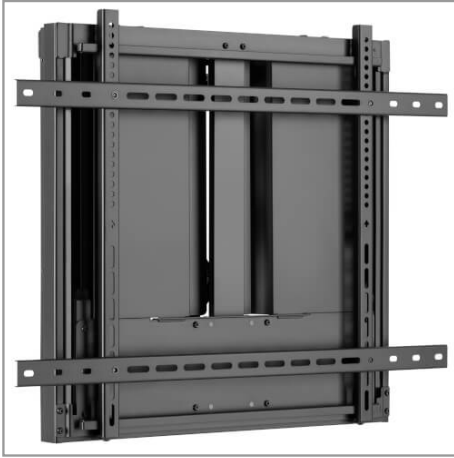


Height-Adjustable TV Wall Mount for 70” to 90” Flat-Panel Interactive Displays

MODEL NUMBER: DWM7090HD



Mounts your 70 to 90 in. television, whiteboard or interactive display to a wall and adjusts vertically to provide optimal viewing angles.

Features

TV Wall Mount Secures Your Interactive Touchscreen Display at Arm’s Length

The VESA-compliant DWM7090HD mounts your television, monitor, whiteboard or interactive display to a wood stud, brick or concrete wall with the included hardware. Recommended for conference rooms, boardrooms and classrooms, this wall mount supports most popular brands of interactive touchscreen displays, including Promethean, Balance Box and Balt.

Glides Up and Down with Just a Touch for Perfect Viewing

Intricately designed counterbalanced springs allow the connected display to glide up and down the wall, allowing users of all sizes to adjust and work at the interactive touchscreen. With 15.7 inches (40 centimeters) of vertical movement, the DWM7090HD provides easy fingertip control for everyone.

Durable All-Metal Construction Built to Last

This height-adjustable TV wall mount is made from heavy-duty steel with a powder-coated black finish that resists scratches and blends smoothly into any room décor. It is compatible with most flat-screen televisions, monitors and interactive digital whiteboards between 70 and 90 inches and supports 132 to 198 pounds (90 kilograms).

VESA-Compliant Mounting Ensures Display Compatibility

VESA (Video Electronics Standards Association) promotes uniformity in the video electronics industry by developing standards for TVs and monitors. For hassle-free display compatibility, this TV wall mount supports the following VESA mounting hole patterns: 200 x 200, 200 x 300, 200 x 400, 300 x 200, 300 x 300, 300 x 400, 400 x 200, 400 x 300, 400 x 400, 400 x 500, 400 x 600, 600 x 300, 600 x 400, 600 x 500, 600 x 600, 700 x 400, 700 x 500, 700 x 600, 800 x 500 and 800 x 600.

Specifications

OVERVIEW	
UPC Code	037332268839
Device Compatibility	Monitor/HDTV

Highlights

- Supports most 70–90 in. interactive touchpanel displays 132 to 198 lb.
- Innovative weight-balancing design allows smooth height adjustment up to 15.7 in.
- Compact steel mount hides out of sight behind the display for a professional look
- VESA compliance ensures compatibility with most popular mounting hole patterns
- Hardware included for mounting on wood, brick or concrete wall surface

System Requirements

Flat-screen television, monitor whiteboard or interactive display from 70 to 90 in.

Package Includes

- DWM7090HD Height-Adjustable TV Wall Mount
- Mounting hardware
- Owner’s manual



Powering Business Worldwide



PHYSICAL	
Color	Black
Material of Construction	Steel
VESA Pattern (mm)	200x200; 200x300; 200x400; 300x200; 300x300; 300x400; 400x200; 400x300; 400x400; 400x500; 400x600; 600x300; 600x400; 600x500; 600x600; 700x400; 700x500; 700x600; 800x400; 800x500; 800x600
Motion	Full
Mounting Location	Wall
Distance from Wall (in.)	5
Distance from Wall (cm)	13
Distance from Wall (mm)	127
Minimum Screen Size (in.)	70
Minimum Screen Size (cm)	177.8
Maximum Screen Size (in.)	90
Maximum Screen Size (cm)	228.6
Maximum Weight Capacity (lbs.)	198
Maximum Weight Capacity (kg)	90
Number of Displays	1
Unit Dimensions (hwd / in.)	40.940 x 33.100 x 5.000
Unit Dimensions (hwd / cm)	103.99 x 84 x 12.70
Unit Weight (lbs.)	56.7
Unit Weight (kg)	25.72
Assembly Required	Yes
FEATURES & SPECIFICATIONS	
Antimicrobial	No
Cord Management	No
Tools Necessary	Yes
Security Lock	No
STANDARDS & COMPLIANCE	
Product Compliance	RoHS; RoHS3; REACH
WARRANTY & SUPPORT	
Product Warranty Period (Worldwide)	5-year limited warranty



Powering Business Worldwide



1000 Eaton Boulevard
Cleveland, OH 44122
United States
<https://tripplite.eaton.com>

© 2024 Eaton. All Rights Reserved.
Eaton is a registered trademark. All other trademarks
are the property of their respective owners.